



## **TITLE VI HIGHLIGHTS**

### **2016 HDOT Civil Rights Symposium**

**January 27-28, 2016**  
**Honolulu International Airport Interisland Conference Center**  
**KAMANI ROOM**  
**8:00 a.m. – 4:30 p.m.**

#### **Wednesday, January 27, 2016**

8:00-9:00	<b>Registration</b>
9:00 – 10:00	<b>Keynote:</b> Kim “Coco” Iwamoto
10:00-10:30	<b>Break</b>
10:30-11:30	<b>WOMEN IN TRANSPORTATION PANEL</b> <ul style="list-style-type: none"><li>• Kai Nani Kraut, PE, HDR, Inc.</li><li>• Nami Ohtomo, Young Bros.</li><li>• Elizabeth Fischer, Senior Planner, FHWA</li><li>• Charlotte Townsend, Administrator, OTS Paratransit</li><li>• Colleen Hanabusa, Esq., member HART Board of Directors</li></ul>
11:30-1:00	<b>Q&amp;A/Lunch</b>
1:00-2:00	<b>FHWA TITLE VI/ENVIRONMENTAL JUSTICE TRAINING</b> <ul style="list-style-type: none"><li>• BRIAN BETLYON</li><li>• KEITH MOORE</li><li>FHWA Resource Center Trainers</li></ul>
2:00-2:30	<b>Break</b>
2:30-3:30	<b>OFFICE OF LANGUAGE ACCESS TRAINING - LEP</b> <ul style="list-style-type: none"><li>• REBECCA “BECKY” GARDNER, J.D., LEGAL ANALYST, OFFICE OF LANGUAGE ACCESS</li></ul>
3:30 -4:30	<b>Closing Q&amp;A</b>

#### **Thursday, January 28, 2016**

8:00-9:00	<b>Registration</b>
9:00-10:00	<b>Speaker</b>
10:00-10:30	<b>Break</b>
10:30-11:30	<b>FHWA Title VI and Environmental Justice</b>
11:30-1:00	<b>Break/Lunch</b>

1:00-2:00	<b>COMPLETE STREETS UPDATE - TITLE VI &amp; ENVIRONMENTAL JUSTICE POINTS</b> MIKE PACKARD, SSFM
2:00-2:30	• <b>Break</b>
2:30-3:30	• FHWA Title VI and Environmental Justice BRIAN BETLYON • KEITH MOORE FHWA Resource Center Trainers
3:30 -4:30	<b>Closing Q&amp;A</b>

## OUR SPEAKERS

### **BRIAN BETLYON, FHWA Resource Center**

Brian Betlyon is the Metropolitan Planning Specialist at the Federal Highway Administration Resource Center in Baltimore, MD. The Resource Center provides training, technical assistance and technology transfer services to a broad array of transportation customers. Brian staffs several National Highway Institute courses and currently leads customized workshops on Scenario Planning, Congestion Management Process, Performance Measures and Environmental Justice topics. Prior to joining FHWA in 1995, Brian was Assistant Director of Transportation Planning at the Baltimore Metropolitan Council, where he spent 13 years working in both the technical and policy arenas. From 1990 – 1992, Mr. Betlyon worked for Wilbur Smith Associates in their Hong Kong office. Brian holds a Master's degree in Urban and Regional Planning from Penn State University and is a member of the Institute of Transportation Engineers.



### **ELIZABETH E. FISCHER, RLA, ASLA, APA IAEM, FHWA Hawaii**

Transportation Planner, Emergency Manager, FHWA; Registered Landscape Architect NC #917; MS Landscape Architecture, NC State University College of Design, BS History and Biology, Randolph Macon College, Ashland, VA

Ms. Fischer has focused on community planning throughout her career on issues specific to rural areas, small communities, tribal governments, and in special topic areas for communities including place-making, livability, smart growth, active-living through design, context sensitive design, historic preservation, climate adaptation, and disaster recovery planning. She currently heads transportation planning and emergency management and implementation for the USDOT-FHWA in the State of Hawaii, and the US Territories of American Samoa, Guam, and the Northern Mariana Islands.



Her activities at the FHWA include representing the FHWA on the Intergovernmental Coordinating Council on Access and Mobility where she works on vulnerable population evacuations during and after disasters. Ms. Fischer was integral in starting both the North Carolina and the National Scenic Byways programs. She is an active member of the American Society of Landscape Architects (ASLA) where she is a national and regional leader. She is also active with the Hawaii Chapter of the American Planning Association (APA) and the Federal Caucus of the International Association of Emergency Managers (IAEM).

Ms. Fischer is a certified facilitator and instructor for the USDOT-FHWA and the Department of Homeland Security, and has been a leadership trainer for the ASLA. She has authored and edited numerous articles and

papers published in national and international professional periodicals and journals. For fun she competes internationally in Hawaiian Outrigger Canoe racing - a sport that takes her from New England's Capes to Pacific Rim Atolls; a sport through which she also volunteers to work with wounded warriors for their physical and mental rehabilitation. She is a member of the Hawaii State Society of Washington, DC.

### **BECKY GARDNER, Legal Analyst, Office of Language Access**

Ms. Gardner joined the Office of Language Access as its Senior Legal Analyst in May 2012. Prior to that she served as a Staff Attorney for the Consumer Protection & Commerce Committee of the State of Hawaii - House of Representatives; and as a law clerk at both the First Circuit Court and the Intermediate Court of Appeals. She has a bachelor's degree in Social Work from Cornell University and a law degree from the University of Hawaii-William S. Richardson School of Law with a certificate in Pacific-Asian Legal Studies. She is licensed to practice law in the states of Hawaii and New York.



### **COLLEEN HANABUSA, Esq., Director, Board of Directors, HART**

B.A., University of Hawai'i in Economics and Sociology, M.A., University of Hawai'i in Sociology, J.D., William S. Richardson School of Law, University of Hawai'i

Ms. Hanabusa was elected to serve the people of the 21<sup>st</sup> District in the Hawai'i State Senate, and served for 12 years from 1999-2010. While there, she held the following positions: Chair of the Committee on Water, Land and Hawaiian Affairs (1999-2000), Vice-President of the Hawai'i State Senate and Vice-Chair of the Committee on Ways and Means (2001-2002), Majority Leader of Hawai'i State Senate and Chair of the Committee on Judiciary and Hawaiian Affairs (2003-2006) and President Hawai'i State Senate (2007-2010). In 2010, Ms. Hanabusa was elected to represent the First Congressional District of the State of Hawai'i in the United States Congress, 2011-2014. During her term, Ms. Hanabusa served on the following: The House Armed Services Committee (2011-2014); The House Committee on Natural Resources (2011-2014); Ranking Member (highest Democrat) on the Subcommittee on Indian and Alaskan Native Affairs (2013-2014); Ranking Member to Chair Randy Forbes on the Pivot to Asia Pacific resulting with the co introduction of the Asia Pacific Region Priority Act (2013-2014). Ms Hanabusa continues as a practicing attorney in the State of Hawaii. She was recently appointed to the Board of HART (Honolulu Authority for Rapid Transportation) which oversees the largest capital improvement project in the State of Hawai'i's history, the construction of the rail project. (June 2015). She was also appointed to the Board of Hawaii Gas, the only government-franchised, full-service gas company manufacturing and distributing gas in Hawai'i. It is a wholly owned indirect subsidiary of Macquarie Infrastructure Company. (May 2015)



### **KAI NANI KRAUT, P.E., HDR, Inc.**

Women in Transportation (Hawaii Chapter) is led by Kai Nani Kraut, P.E. Ms. Kraut brings a tremendous enthusiasm and a strong managerial background to WTS leadership. Ms. Kraut recently joined HDR Engineering as the construction management lead. In a short time, she has created new business for a small construction management firm here on Oahu by winning of four contracts in the short span of two years. Previously, Ms. Kraut served as the Deputy Director at Honolulu's City and County Department of Transportation Services (DTS). There, she managed primarily capital improvement projects for the department



with the emphasis on DTS's federal program. Ms. Kraut's knowledge of federal funding, strong relationships with HDOT, the Federal Highway Administration (FHWA), and city transportation professionals make her a leader in transportation here in Hawaii. On a personal note, she has built a successful Mary Kay business for almost twenty years. On her role as leader of WTS Hawaii, Ms. Kraut stated, "(h)elping women truly resonates with every fiber of my being. I have been blessed in my career and it is my mission to help others create success in their lives. Together, we all accomplish more. I am honored to be president of this growing and powerful world."

#### **KEITH MOORE, FHWA Resource Center**

B.A., Economics, Howard University; M.U.P. Urban Planning & M.P.A. Public Administration, University of Michigan, Ann Arbor, MI; 15 Credits towards M.S. Civil Engineering, Virginia Tech, Blacksburg, VA

Mr. Moore's specialties are: Community Impact Assessment, Context Sensitive Solutions, Environmental Justice, NEPA and Transportation Decision Making, and Public Involvement



Also, he is a certified instructor for four NHI courses. In addition, Mr. Moore serves as a Co-Leader of the FHWA Context Sensitive Solutions team, including website management, training delivery, and technical assistance. Furthermore, he participates on the 4(f), Environmental Justice, and Planning Leadership teams. Mr. Moore provides support and technical assistance to six FHWA Division Offices and all three Federal Lands Highway regions on environmental policy and regulations and environmental documentation. Mr. Moore serves on FHWA Every Day Counts teams as reviewer of TIGER II Grant Applications, and on the NEPA review teams for the I-70 West Mountain Corridor Tier 1 EIS (CO), Little Missouri River Crossing EIS (ND), US-220 Tier 1 EIS (WV/MD), US-50 East Tier 1 EIS (CO), US-550 EIS (CO) and Juanita River Bridge Replacement EA (PA). Previously, Mr. Moore served as a Transportation Planner/Traffic Analyst, Maryland-National Capital Park and Planning. He was the Director of Transportation for McKissack and McKissack. He served as a Transit Planner at the Hampton Roads Transit District, and as a Transportation Planner for the Westchester County Department of Transportation. In addition, he was a Staff Analyst for the New York City Department of Housing Preservation.

#### **NAMI OHTOMO, Manager, Strategic Planning, Young Brothers, Limited**

Nami Ohtomo is Manager of Strategic Planning at Hawaii's leading interisland shipping company Young Brothers Limited, based in Honolulu. In that capacity, she works on a broad range of planning and operational areas, including harbor facilities & development, operational process improvements, cargo analysis, and external relations. She also coordinates special projects, such as a recent deployment of a maritime hydrogen fuel cell generator, which was designed and developed by the U.S. Department of Energy's Sandia National Labs specifically for use by Young Brothers.



Prior to joining Young Brothers, Nami was an environmental planning consultant at Parsons Brinckerhoff in Honolulu, where she primarily worked on highways and transit projects, helping clients with inter-agency coordination and project compliance under NEPA and other regulations. She was also previously the natural resources policy analyst at the Office of Hawaiian Affairs, where she also doubled as OHA's GIS (Geographic Information Systems) manager. Nami was an active Board Member of the Hawaii Geographic Information Coordinating Council (HIGICC) for a number of years. In a former lifetime, she was also a Tokyo-based foreign correspondent for AP-Dow Jones News Service, reporting on the Asia-Pacific oil and energy market and general economic news.

Nami is a graduate of Harvard University, with dual master's degrees in Public Policy and Natural Resource Management from the University of Michigan Ann Arbor, with an emphasis on environmental and energy issues.

**MICHAEL Y. PACKARD, P.E., PTOE, Associate/Senior Traffic Engineer, SSFM International, Inc.**

Mr. Packard has his B. S. Civil Engineering from Virginia Tech in 2000. Mr. Packard's role with SSFM's Planning Group is focused on firm-wide traffic engineering assignments including traffic operations analysis and transportation network planning of Complete Streets, bicycle and pedestrian facility design. He applies his traffic engineer expertise to design traffic signalization, fiber optic and wireless transportation management systems, red-light photo enforcement, pavement marking, and roadway signing. Mr. Packard's planning activities include transportation corridor studies, sub-area circulation analysis, route location, traffic safety, and traffic impact analysis for residential, commercial, institutional, and mixed-use centers. Also, he serves as the lead for SSFM's Complete Street initiatives. Michael is a former president and currently an active member of the Hawaii Section of the Institute of Transportation Engineers.



**CHARLOTTE L. TOWNSEND, Vice President, Paratransit Services - Oahu Transit Services, Inc.**

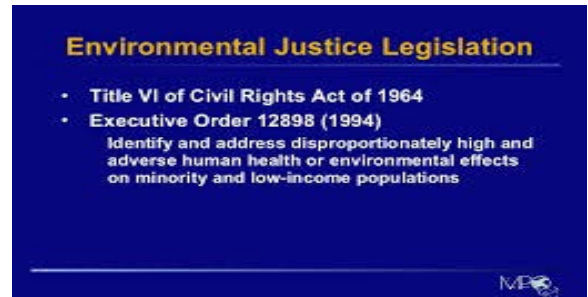
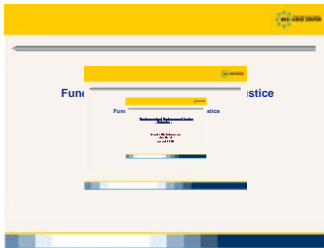
Charlotte Townsend joined Oahu Transit Services, Inc. as the Vice President of Paratransit Services, overseeing the operations of TheHandiVan, starting October 1, 2015. She has worked with and has been an advocate for persons with disabilities for the last thirty-five years. Her previous position at the State Department of Health, Disability and Communications Access Board and earlier work with nonprofits and educational institutions have kept her focused on ensuring quality services for people with disabilities. Ms. Townsend's past membership and affiliations include the Rehabilitation Association of Hawaii, National Rehabilitation Association, The Arc, Protection and Advocacy Agency of Hawaii, the National Rehabilitation Counselors Association, State of Hawaii Commission on the Handicapped, and President's Committee for Employment on the Handicapped.





**FHWA RESOURCE CENTER SPEAKERS  
BRIAN BETLYON AND KEITH MOORE AT  
2016 CIVIL RIGHTS SYMPOSIUM, HONOLULU, HAWAII  
AIRPORTS CONVENTION CENTER, 1/27/16 AND 1/28/16.**

**FHWA Title VI** -includes nondiscrimination prohibitions against Race, Color, National Origin Disability and Age. <http://hidot.hawaii.gov/administration/files/2016/02/T6-EJ-PI-HI-2016.pdf>  
(click on image below for presentation)





*Advancing Women in Transportation*

## **WOMEN IN TRANSPORTATION SPEAKER'S PANEL**

**2016 CIVIL RIGHTS SYMPOSIUM, HONOLULU, HAWAII**

**AIRPORTS CONVENTION CENTER, 1/27/16**



**Speakers (L to R): Kai Nani Kraut, HDR, Nami Ohtomo, Young Brothers, Elizabeth Fischer, FHWA, Colleen Hanabusa, HART and Charlotte Townsend, OTS Paratransit**

**Kai Nani Kraut, HDR**



**Nami Ohtomo, Young Brothers**





**ELIZABETH FISCHER, FHWA**



**COLLEEN HANABUSA, HART**



**CHARLOTTE TOWNSEND, OTS PARATRANSIT**



**VARIOUS VIEWPOINTS**





**REBECCA GARDNER, OFFICE OF LANGUAGE ACCESS**

<http://hidot.hawaii.gov/administration/files/2016/02/T6-OLA.pdf>



**MICHAEL PACKARD, SSFM FOR COMPLETE STREETS**

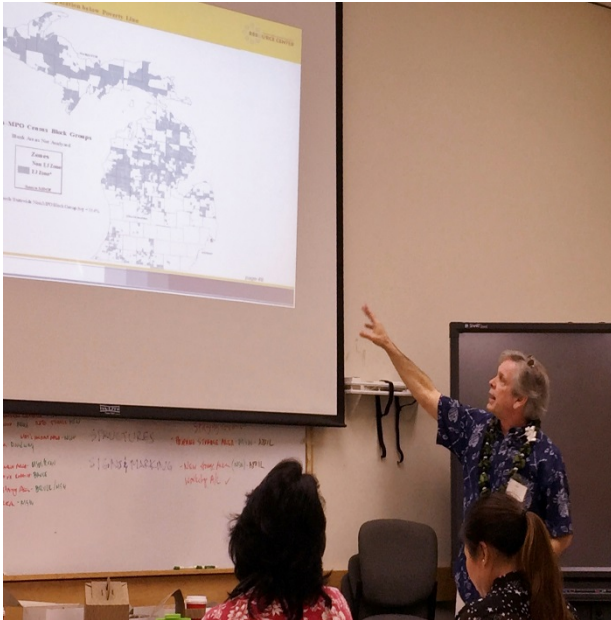
<http://hidot.hawaii.gov/administration/files/2016/02/T6-160125-HDOT-CRS-CS-Update.pdf>



**FHWA RESOURCE CENTER TRAINING  
FOR HDOT AND OMPO PLANNERS AND ENGINEERS  
JANUARY 29, 2016, HDOT HWY OAHU DISTRICT OFFICE**

**(MORE POWERPOINTS TO COME)**

**BRIAN BETLYON**



**KEITH MOORE**



**[NEPA TRAINING IN HAWAII JANUARY 2016.PDF](#)**

**[EJ PLANNING ANALYSIS HI\\_2016.PDF](#)**

**AUDIENCE: GOVERNMENT PLANNERS  
AND ENGINEERS**

**DETAILED QUESTION AND  
ANSWER TIME**

