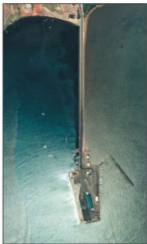


KAUNAKAKAI HARBOR

The Territory of Hawai'i built Kaunakakai Harbor in 1927. The harbor's commercial wharf offers 689 feet of berthing space with water depths of 23 feet. Its turning basin measures 600-foot wide by 1,500-foot long. A 1,700-foot causeway connects the 6.44-acre pier to the town of Kaunakakai. It contains facilities for an inter-island barge cargo operation, a liquid-bulk cargo operation and a passenger ferry terminal. Adjacent to the commercial harbor is the Kaunakakai Small Boat Harbor managed by the Department of Land and Natural Resource's Division of Boating and Ocean Recreation (DOBOR).

For more information on Kaunakakai Harbor, please contact the Harbor Agent's Office at:

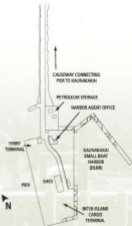
Department of Transportation
Harbors Division
P. O. Box 738
Kaunakakai, Hawai'i 96748
Telephone: (808) 553-1742



Air Survey Hawaii Photo



A ferry vessel leaving Kaunakakai Harbor.



KAUNAKAKAI HARBOR

PIER	BERTH LENGTH (feet)	YARD AREA (acres)	SHED AREA (sq. ft.)	DESIGN DEPTH AT PIER (feet) *	PRINCIPAL CARGO/PIER USE
	689	2.9	7,400	23	Liquid-bulk cargo and pipelines, inter-island cargo, ferry terminal.

* For current depths, please contact the Harbors Division.