

**DEPARTMENT OF TRANSPORTATION
HAWAII STATE TRANSPORTATION PLAN**

Mission: To facilitate the safe, economic, efficient, and convenient movement of people and goods.

HSTP CODE	DESCRIPTION OF GOALS	HSTP CODE	DESCRIPTION OF OBJECTIVES
MOBILITY AND ACCESSIBILITY			
G1	Goal 1: Achieve an integrated multi-modal transportation system that provides mobility and accessibility for people and goods.	G101	Objective 1: To preserve, maintain, and improve the transportation system infrastructure and facilities. A. Improve connectivity of the transportation system. B. Increase capacity. C. Pursue the maintenance and rehabilitation of the transportation system. D. Ensure provision of essential operations and facilities.
		G102	Objective 2: To increase the efficiency of the transportation system operations. A. Enhance intermodal connectivity. B. Employ strategies to reduce transportation demand. C. Enhance performance of the transportation system.
		G103	Objective 3: To promote alternative transportation mode choice. A. Provide a reasonable level and variety of public transit services that adequately meet statewide and community needs. B. Provide affordable, viable alternatives that are convenient and accessible. C. Promote pedestrian and cyclists safety.
		G104	Objective 4: To reduce congestion and delay. A. Increase capacity. B. Employ strategies to reduce transportation demand.
SAFETY AND SECURITY			
G2	Goal 2: Ensure the safety and security of transportation systems.	G201	Objective 1: To enhance the safety of the transportation system. A. Promote safe facilities and infrastructure. B. Promote the safe use of the transportation systems.
		G202	Objective 2: To ensure the secure operation and use of the transportation system. A. Employ various safety and security measures as required. B. Utilize law enforcement at problem locations.
ENVIRONMENT AND QUALITY OF LIFE			
G3	Goal 3: Protect and enhance the environment and improve the quality of life.	G301	Objective 1: To provide a transportation system, that is environmentally compatible and sensitive to cultural and natural resources. A. Provide facilities and infrastructure that are environmentally friendly. B. Manage and operate the transportation system in an environmentally responsible manner. C. Support environmentally responsible programs and activities.
		G302	Objective 2: To ensure that the transportation system supports comprehensive land use policies and livability in urban and rural areas. A. Provide a transporation system that supports and enhances quality of life. B. Encourage the use of non-motorized transportation modes. C. Minimize disruption of existing neighborhoods due to transportation.
ECONOMIC DEVELOPMENT			
G4	Goal 4: Support Hawaii's economic vitality.	G401	Objective 1: To provide and operate a transportation system to accommodate existing and emerging economic developments and opportunities. A. Provide a direct, convenient, and physically suitable system for goods movement to transportation facilites and commercial and industrial areas. B. To promote efficient and cost effective operations of the transportation system.
		G402	Objective 2: To provide a transportation system that balances the need for economic development with quality of life issues. A. Make transportation investments that reflect each islands scale and foster the quality of life of the people who live there. B. Target transportation investments in coordination with community involvement.
INTEGRATED STATEWIDE PLANNING, PROGRAMMING, AND DECISION-MAKING			
G5	Goal 5: Achieve a Statewide Planning Process that is comprehensive, cooperative, and continuing.	G501	Objective 1: To improve coordination and cooperation between all levels of government, the private sector, and the general public. A. Supports and conducts the Statewide Transportation Planning Process. B. Improve communication between all levels of government, the private sector, and the general public. C. Integrate approved policies, programs, and plans from all levels of government.
		G502	Objective 2: To involve the public and stakeholders to the fullest practicable extent in the planning and implementation of the transportation system. A. Develop programs to ensure opportunity for public and stakeholders' involvement. B. Ensure responsiveness to public concerns.
		G503	Objective 3: To develop and maintain a transportation financial structure that provides adequate and dependable resources. A. Optimize all possible financial resources. B. Develop an ongoing comprehensive financial program.

DEPARTMENT OF TRANSPORTATION
STATEWIDE TRANSPORTATION IMPROVEMENT PROGRAM : FINANCIALLY CONSTRAINED
FFY 2011 THRU 2014 (FFY 2015-2016 Informative Only)

Click here to access the FFY 11-14(+2) STIP document: <http://hawaii.gov/dot/highways/STIP/110531%2011-14%20STIP%20Rev%20%232%20-2.pdf>

SYSTEM PRESERVATION PROJECTS		Project Description	Bridge Assessment and Replacement Programs Yes: Project identified through DOT's Bridge Replacement Program, Honolulu's Bridge Inspection & Appraisal process or other bridge programming system No: Project did not result from DOT's Bridge Replacement Program, Honolulu's Bridge Inspection & Appraisal process or other bridge programming system	Pavement Management Programs Yes: Project identified through DOT's Pavement Management System, Honolulu's Roadway Pavement Condition Survey or other pavement evaluation system No: Project did not result from DOT's Pavement Management System, Honolulu's Roadway Pavement Condition Survey or other pavement evaluation system	Cost Participation High: Private industry funding has been secured Med: Private industry funding is anticipated Low: Does not include other financial involvement (i.e. private industry)	Project Stage High: Planning or Design has already been completed Med: Planning or Design is almost complete Low: The project has not yet begun	Gap Closure? Does this project close a gap or connect missing links in a route?	Mandated? Required by federal, state, or municipal laws, regulations or codes?	Addresses at least one SAFETEA-LU Planning Factor?	Listed in Regional Transportation Plans	HSTP Goals and Objectives Code	Revision #2
	STATEWIDE - FHWA											
S2.	Bridge Inspection and Appraisal	Inventory, inspect and appraise state bridges. Includes underwater inspection, scour analyses, surveys and preparation of plans for bridge repairs, retrofits and replacements.	N	N	L	H	N	Y	Y	N	G101-2, G201-2	
S4.	Highway Research and Development Program	Supplement the Statewide Planning and Research Program.	N	N	L	H	N	N	Y	N	G101-2, G104, G201-2, G501	Increase PLN in FY12-16 from \$500K to \$850K. New estimated total project cost is \$4,750,000.
S6.	Highway Shoreline Protection, Statewide	Funding to implement shoreline protection projects as identified in the State's shoreline protection plan.	N	N	L	M	N	N	Y	N	G101, G201, G501	
S7.	Hawaii Statewide ITS Architectural Plan	Develop ITS Architechure Plan for Non-Metro areas of the State (neighbor islands).	N	N	L	L	N	N	Y	N	G101-2, G104, G201-2, G302, G401, G501	
S14.	Statewide Bridge and Pavement Improvement Program	System maintenance of highway bridges and pavements. Work may include bridge and/or pavement reconstruction, resurfacing, restoration, rehabilitation and/or preservation.	Y	Y	L	H	N	N	Y	N	G101-2, G201-2, G301-2, G401, G501	Changed project title from Statewide Pavement and Bridge Preservation Program. Changed project description. Added \$5M in all local monies for DES-CON phase for FY11-16 to account for the federalization of design-build efforts that fit within this program. Also listed numerous potential federally-funded projects for each county.

DEPARTMENT OF TRANSPORTATION
STATEWIDE TRANSPORTATION IMPROVEMENT PROGRAM : FINANCIALLY CONSTRAINED
FFY 2011 THRU 2014 (FFY 2015-2016 Informative Only)

Click here to access the FFY 11-14(+2) STIP document: <http://hawaii.gov/dot/highways/STIP/110531%2011-14%20STIP%20Rev%20%232%20-2.pdf>

SYSTEM PRESERVATION PROJECTS												
Projects that upgrade and protect infrastructure investments, such as: - pavement resurfacing projects - bridge projects - drainage projects - street light pole replacement projects - traffic sign projects - roadway upgrade projects (no additional capacity) - Intelligent Transportation System (ITS)		Project Description	Bridge Assessment and Replacement Programs Yes: Project identified through DOT's Bridge Replacement Program, Honolulu's Bridge Inspection & Appraisal process or other bridge programming system No: Project did not result from DOT's Bridge Replacement Program, Honolulu's Bridge Inspection & Appraisal process or other bridge programming system	Pavement Management Programs Yes: Project identified through DOT's Pavement Management System, Honolulu's Roadway Pavement Condition Survey or other pavement evaluation system No: Project did not result from DOT's Pavement Management System, Honolulu's Roadway Pavement Condition Survey or other pavement evaluation system	Cost Participation High: Private industry funding has been secured Med: Private industry funding is anticipated Low: Does not include other financial involvement (i.e. private industry)	Project Stage High: Planning or Design has already been completed Med: Planning or Design is almost complete Low: The project has not yet begun	Gap Closure? Does this project close a gap or connect missing links in a route?	Mandated? Required by federal, state, or municipal laws, regulations or codes?	Addresses at least one SAFETEA-LU Planning Factor?	Listed in Regional Transportation Plans	HSTP Goals and Objectives Code	Revision #2
S15.	Statewide Signing, Striping and Pavement Marking Program	System maintenance to upkeep traffic control devices such as highway signing and striping.	N	Y	L	H	N	N	Y	N	G101-2, G201-2, G301-2, G401-2, G501	Added \$5M in all local monies for DES-CON phase for FY11-16 to account for the federalization of design-build efforts that fit within this program. Added specific project info for Kauai project.
S25.	Statewide Guardrail and Shoulder Improvement Program	System maintenance to upkeep roadway guardrails and shoulders.	N	N	L	H	N	N	Y	N	G101-3, G201-2, G301-2, G401-2, G502	NEW Project. All local monies. Estimated total project cost is \$60,000,000.

DEPARTMENT OF TRANSPORTATION
STATEWIDE TRANSPORTATION IMPROVEMENT PROGRAM : FINANCIALLY CONSTRAINED
FFY 2011 THRU 2014 (FFY 2015-2016 Informative Only)

Click here to access the FFY 11-14(+2) STIP document: <http://hawaii.gov/dot/highways/STIP/110531%2011-14%20STIP%20Rev%20%232%20-2.pdf>

SAFETY PROJECTS		Project Description	Highway Safety Improvement Program Yes: Project identified through DOT's Highway Safety Improvement Program or County Safety Improvement Program No: Project did not result from DOT's Highway Safety Improvement Program or County Safety Improvement Program	Rockfall Protection Study Yes: Project identified through DOT's Rockfall Protection Study No: Project did not result from DOT's Rockfall Protection Study	Cost Participation High: Private industry funding has been secured Med: Private industry funding is anticipated Low: Does not include other financial involvement (i.e. private industry)	Project Stage High: Planning or Design has already been completed Med: Planning or Design is almost complete Low: The project has not yet begun	Gap Closure? Does this project close a gap or connect missing links in a route?	Mandated? Required by federal, state, or municipal laws, regulations or codes?	Addresses at least one SAFETEA-LU Planning Factor?	Listed in Regional Transportation Plans	HSTP Goals and Objectives Code	Revision #2
	STATEWIDE - FHWA											
S5.	Highway Safety Improvement Program (HSIP), Non - Infrastructure Funding Program	Implement non-infrastructure scope of HSIP including safety education programs and PSAs.	Y	N	L	H	N	N	Y	N	G103, G201-2, G501	
S10.	Safe Routes to School (SR2S) Program	Implement the Safe Routes to School Program to promote walking and biking as a safe and viable transportation alternative, especially in the vicinity of schools.	N	N	L	M	N	N	Y	N	G101-4, G201-2, G301-2, G402, G501-2	
S13.	Statewide Highway Lighting and Traffic Signal Upgrade Program	System maintenance of highway lighting and traffic signals.	N	N	L	M	N	N	Y	N	G201	Added \$5M in all local monies for DES-CON phase for FY11-16 to account for the federalization of design-build efforts that fit within this program.

DEPARTMENT OF TRANSPORTATION
STATEWIDE TRANSPORTATION IMPROVEMENT PROGRAM : FINANCIALLY CONSTRAINED
FFY 2011 THRU 2014 (FFY 2015-2016 Informative Only)

Click here to access the FFY 11-14(+2) STIP document: <http://hawaii.gov/dot/highways/STIP/110531%2011-14%20STIP%20Rev%20%232%20-2.pdf>

CONGESTION MITIGATION PROJECTS		Project Description	Congestion Management System Yes: Project identified through a Congestion Management System process No: Project did not result from a Congestion Management System process	Highway Safety Improvement Program Yes: Project identified through DOT's Highway Safety Improvement Program or County Safety Improvement Program No: Project did not result from DOT's Highway Safety Improvement Program or County Safety Improvement Program	Cost Participation High: Private industry funding has been secured Med: Private industry funding is anticipated Low: Does not include other financial involvement (i.e. private industry)	Project Stage High: Planning or Design has already been completed Med: Planning or Design is almost complete Low: The project has not yet begun	Traffic Signal Warrants Traffic signal project meets the criteria in the Traffic Signal Warrants	Gap Closure? Does this project close a gap or connect missing links in a route?	Mandated? Required by federal, state, or municipal laws, regulations or codes?	Addresses at least one SAFETEA-LU Planning Factor?	Listed in Regional Transportation Plans	HSTP Goals and Objectives Code
	STATEWIDE - FHWA											
S18.	Van Pool Program	Van Pool program funding, statewide.	N	N	L	M	N	N	N	Y	Y	G101-4, G201-2, G301-2, G402, G501-2

DEPARTMENT OF TRANSPORTATION
STATEWIDE TRANSPORTATION IMPROVEMENT PROGRAM : FINANCIALLY CONSTRAINED
FFY 2011 THRU 2014 (FFY 2015-2016 Informative Only)

Click here to access the FFY 11-14(+2) STIP document: <http://hawaii.gov/dot/highways/STIP/110531%2011-14%20STIP%20Rev%20%232%20-2.pdf>

MODERNIZATION PROJECTS		Project Description	Congestion Management System Yes: Project identified through a Congestion Management System process No: Project did not result from a Congestion Management System process	Highway Safety Improvement Program Yes: Project identified through DOT's Highway Safety Improvement Program or County Safety Improvement Program No: Project did not result from DOT's Highway Safety Improvement Program or County Safety Improvement Program	Cost Participation High: Private industry funding has been secured Med: Private industry funding is anticipated Low: Does not include other financial involvement (i.e. private industry)	Project Stage High: Planning or Design has already been completed Med: Planning or Design is almost complete Low: The project has not yet begun	Traffic Signal Warrants Traffic signal project meets the criteria in the Traffic Signal Warrants	Gap Closure? Does this project close a gap or connect missing links in a route?	Mandated? Required by federal, state, or municipal laws, regulations or codes?	Addresses at least one SAFETEA-LU Planning Factor?	Listed in Regional Transportation Plans	HSTP Goals and Objectives Code	Revision #2
	STATEWIDE - FHWA												
S9.	Public Lands Highways Discretionary Projects	Federal grant program. Projects that are adjacent to or provide access to federal lands are eligible to apply for these funds.	N	N	L	L	N	N	N	Y	N	G101-2, G501-3	
S16.	Technology Transfer and Technical Assistance Program	Conduct training and technology transfer activities for government and private transportation personnel.	N	N	L	M	N	N	N	Y	N	G101-2, G501-2	Decrease PLN in FY12-16 from \$500K to \$150K.
S17.	Traffic Counting Stations, Various Locations	Construction of statewide traffic counting stations for traffic data gathering and planning purposes.	N	N	L	M	N	N	N	Y	N	G101-2, G301, G501	

DEPARTMENT OF TRANSPORTATION
STATEWIDE TRANSPORTATION IMPROVEMENT PROGRAM : FINANCIALLY CONSTRAINED
FFY 2011 THRU 2014 (FFY 2015-2016 Informative Only)

Click here to access the FFY 11-14(+2) STIP document: <http://hawaii.gov/dot/highways/STIP/110531%2011-14%20STIP%20Rev%20%232%20-2.pdf>

ENHANCEMENT PROJECTS Transportation enhancement projects, such as: - bikeway projects - landscaping projects - pedestrian facilities projects		Project Description	Hawaii Statewide Enhancement Program Is the project classified as "Potentially Fundable" for use of Transportation Enhancement funds by the Hawaii Enhancement Procedures for TE Projects?	Cost Participation High: Private industry funding has been secured Med: Private industry funding is anticipated Low: Does not include other financial involvement (i.e. private industry)	Project Stage High: Planning or Design has already been completed Med: Planning or Design is almost complete Low: The project has not yet begun	Gap Closure? Does this project close a gap or connect missing links in a route?	Mandated? Required by federal, state, or municipal laws, regulations or codes?	Addresses at least one SAFETEA-LU Planning Factor?	Listed in Regional Transportational Plans	HSTP Goals and Objectives Code
STATEWIDE - FHWA										
S1.	Bikeway Improvements at Various Locations, Statewide	Implementation of State bike projects identified on Bike Plans.	N	L	L	N	N	Y	Y	G101-4, G201-2, G301-2, G401-2, G501-2
S8.	Pedestrian Facilities and ADA Compliance at Various Locations	Address ADA compliance needs, statewide.	N	L	L	N	Y	Y	Y	G101-4, G201-2, G301-2, G401-2, G502
S11.	SNIPP - Statewide Noxious Invasive Pest Program	Operation of the Statewide Noxious Invasive Pest Program.	N	L	M	N	N	Y	N	G101, G301, G501
S12.	Statewide Countown Pedestrian Signal Head Upgrade, Phase 2	Implement pedestrian signal head upgrade with countdown head.	N	L	M	N	N	Y	N	G101-4, G201-2, G301-2, G401-2

**DEPARTMENT OF TRANSPORTATION
STATEWIDE TRANSPORTATION IMPROVEMENT PROGRAM : FINANCIALLY CONSTRAINED
FFY 2011 THRU 2014 (FFY 2015-2016 Informative Only)**

Click here to access the FFY 11-14(+2) STIP document: <http://hawaii.gov/dot/highways/STIP/110531%2011-14%20STIP%20Rev%20%232%20-2.pdf>

HUMAN SERVICES TRANSPORTATION PROGRAMS Human Services programs, such as the following, that assist persons who have been traditionally underserved by the transportation system: - Job Access and Reverse Commute Program (JARC) - Elderly and Persons with Disabilities Vehicle Acquisition Program - New Freedom Program - Ways to Work Program		Project Description	Human Services Transportation Plan Yes: Project is included in the Coordinated Public Transit-Human Services Transportation Plan No: Project is not included in the Coordinated Public Transit-Human Services Transportation Plan	Cost Participation High: Private industry funding has been secured Med: Private industry funding is anticipated Low: Does not include other financial involvement (i.e. private industry)	Project Stage High: Planning or Design has already been completed Med: Planning or Design is almost complete Low: The project has not yet begun	Mandated? Required by federal, state, or municipal laws, regulations or codes?	Addresses at least one SAFETEA-LU Planning Factor?	Listed in Regional Transportation Plans	HSTP Goals and Objectives Code
STATEWIDE - FTA									
S3.	Construction Career Days Workforce Development Program	Supplement the Construction Career Days Workforce Development Program.	N	L	H	N	Y	N	G201, G501-2
S19.	Rural Transportation Assistance Program (RTAP)	FTA Section 5311(b)(2) Rural Transportation Assistance Program (RTAP).	Y	L	H	N	Y	N	G401-2, G501-2
S20.	State Administration	FTA Section 5311 Nonurbanized Area Formula Program.	Y	L	H	N	Y	N	G101-2, G104, G201-2, G301, G401
S21.	Transportation Assistance for Elderly and Disabled	The FTA Section 5310 program provides assistance for the purpose of providing transportation services in meeting the special needs of elderly and disabled persons where mass transportation services are unavailable, insufficient or inappropriate.	Y	L	H	N	Y	N	G101-4, G201-2
S22.	JARC (non-urban)	Job Access and Reverse Commute Program (Section 5316). The JARC formula grant program aims to improve access to transportation services to employment & employment related activities for welfare recipients and eligible low-income individuals and to transport residents of urbanized areas & nonurbanized areas to suburban employment opportunities.	Y	L	H	N	Y	N	G103, G302, G401, G501-2

**DEPARTMENT OF TRANSPORTATION
STATEWIDE TRANSPORTATION IMPROVEMENT PROGRAM : FINANCIALLY CONSTRAINED
FFY 2011 THRU 2014 (FFY 2015-2016 Informative Only)**

Click here to access the FFY 11-14(+2) STIP document: <http://hawaii.gov/dot/highways/STIP/110531%2011-14%20STIP%20Rev%20%232%20-2.pdf>

HUMAN SERVICES TRANSPORTATION PROGRAMS Human Services programs, such as the following, that assist persons who have been traditionally underserved by the transportation system: - Job Access and Reverse Commute Program (JARC) - Elderly and Persons with Disabilities Vehicle Acquisition Program - New Freedom Program - Ways to Work Program		Project Description	Human Services Transportation Plan Yes: Project is included in the Coordinated Public Transit-Human Services Transportation Plan No: Project is not included in the Coordinated Public Transit-Human Services Transportation Plan	Cost Participation High: Private industry funding has been secured Med: Private industry funding is anticipated Low: Does not include other financial involvement (i.e. private industry)	Project Stage High: Planning or Design has already been completed Med: Planning or Design is almost complete Low: The project has not yet begun	Mandated? Required by federal, state, or municipal laws, regulations or codes?	Addresses at least one SAFETEA-LU Planning Factor?	Listed in Regional Transportation Plans	HSTP Goals and Objectives Code
S23.	New Freedom (non-urban)	New Freedom Program (Section 5317). The New Freedom formula grant program aims to provide additional tools to overcome existing barriers facing Americans with disabilities seeking integration into the work force and full participation in society. New Freedom program funds are available for capital and operating expenses that support new public transportation services beyond those required by the ADA and new public transportation alternatives beyond those required by the ADA designed to assist individuals with disabilities with accessing transportation services.	Y	L	H	N	Y	N	G103, G302, G401, G501-2

**DEPARTMENT OF TRANSPORTATION
STATEWIDE TRANSPORTATION IMPROVEMENT PROGRAM : FINANCIALLY CONSTRAINED
FFY 2011 THRU 2014 (FFY 2015-2016 Informative Only)**

Click here to access the FFY 11-14(+2) STIP document: <http://hawaii.gov/dot/highways/STIP/110531%2011-14%20STIP%20Rev%20%232%20-2.pdf>

TRANSIT PROJECTS		Project Description	Maintains Existing System Does it maintain and operate existing fixed route bus and complementary paratransit system?	Completes Multi-Phase Project Does it complete a multi-phase project that has started?	Enhances Hub-and-Spoke System Does it enhance system performance through implementation of hub-and-spoke system?	Enhances Safety and Security Does it enhance safety/security of passengers and the system and enhances service quality level?	New Transit Service	Local Match in Year 1 Budget	Local Match Possible in Years 2, 3 or 4 Budget	Addresses at least one SAFETEA-LU Planning Factor?	Listed in Regional Transportation Plans	HSTP Goals and Objectives Code
	STATEWIDE - FTA											
S24.	Statewide Planning	FTA Statwide Planning funds is a broad area that includes formula and discretionary funding under a variety of programs by awarding grants to eligible recipients. These programs provide funding to support cooperative, continuous, and comprehensive planning for making transportation investment decisions statewide. An example of this includes but is not limited to Statewide Planning under Section 5304. Funds may be utilized towards projects that: support economic vitality; increase transportation system safety and; increase security, accessibility and mobility of people and for freight; protect and enhance the environment; promote energy conservation; enhance the integration and connectivity of various modes; promote system efficiencies; and system preservation. To be eligible for funding under these programs, projects and strategies must come from the applicable transportation planning process.	Y	N	Y	Y	N	Y	Y	Y	N	G101-4, G201-2, G301-2, G401-2, G501-3

DEPARTMENT OF TRANSPORTATION
STATEWIDE TRANSPORTATION IMPROVEMENT PROGRAM : FINANCIALLY CONSTRAINED
FFY 2011 THRU 2014 (FFY 2015-2016 Informative Only)

Click here to access the FFY 11-14(+2) STIP document: <http://hawaii.gov/dot/highways/STIP/110531%2011-14%20STIP%20Rev%20%232%20-2.pdf>

SYSTEM PRESERVATION PROJECTS		Project Description	Bridge Replacement Program (State)	Bridge Inspection & Appraisal (City)	Pavement Management System (State)	Roadway Pavement Condition Survey (City)	Cost Participation	Project Stage	Gap Closure?	Mandated?	Transit Friendly?	Oahu Regional ITS Architecture Consistency	Addresses SAFETEA-LU Planning Factor(s)?	Local Match Available?	Ready-to-Go?	ORTP Consistency	HSTP Goals and Objectives Code	Revision #2
OAHU : STATE - FHWA																		
OS1.	Castle Hills Access Road Drainage Improvements, Phase II	Construct drainage improvements in the vicinity of Pookela Street, Kupohu Street and Pilina Way in Kaneohe.	L	N/A	L	N/A	L	M	N	Y	N	N/A	Y	Y	Y	Proj.35	G101-2, G201-2, G301-2	Incr ROW/CON estimate in FY11 from \$3M to \$4.3M.
OS2.	Farrington Highway (Route 93), Bridge Rehabilitation, Ulehawa Stream Bridge	Rehabilitate bridge to meet current design standards. This includes bridge strengthening, widening, improving shoulders, and upgrading railings.	H	N/A	L	N/A	L	M	N	N	N	N/A	Y	Y	Y	Proj.36	G101-2, G201-2, G301-2, G401	Defer \$10M of CON from FY16 to out years to financially constrain the STIP.
OS3.	Farrington Highway (Route 93), Bridge Replacement, Maipalaoa Bridge	Replace the existing bridge with a concrete structure that meets current bridge standards.	H	N/A	L	N/A	L	M	N	N	N	N/A	Y	Y	Y	Proj.36	G101-2, G201-2, G301-2, G401	Delete Advance construction reimbursement in FY16. Defer and inflate CON from FY15 to \$14.56M in FY16 to financially constrain the STIP.
OS82.	Farrington Highway (Route 93), Bridge Replacement, Makaha Bridges #3 & #3A	Replace a timber bridge in the vicinity of Makaha Beach Park.	H	N/A	N/A	N/A	L	M	N	N	N	N/A	Y	Y	Y	Proj.36	G101-2, G201-2, G301-2, G401	NEW project.
OS15.	Interstate Route H-1 and Interstate Route H-2, Destination Sign Upgrade/Replacement	Replace and/or upgrade the existing destination signs and sign support structures on Interstate Routes H-1 and H-2.	L	N/A	L	N/A	L	M	N	N	N	N/A	Y	Y	Y	Proj.35	G101-2, G201-2	
OS16.	Interstate Route H-1, Bridge Rehabilitation, Kapalama Canal	Rehabilitate existing bridge.	H	N/A	L	N/A	L	L	N	N	N	N/A	Y	Y	Y	Proj.36	G101-2, G201-2, G301-2, G401	
OS21.	Interstate Route H-1, Highway Lighting Improvements, Kaimakani Overpass to Gulick Avenue	Upgrade/replace existing freeway lighting.	L	N/A	L	N/A	L	M	N	N	N	N/A	Y	Y	Y	Proj.35	G101-3, G201-2, G301, G401	Defer and inflate CON for Phase 1 from FY13 to \$6.86M in FY14. Defer \$6.24M of CON for Phase 2 to out years. Deferrals are to financially constrain the STIP.

DEPARTMENT OF TRANSPORTATION
STATEWIDE TRANSPORTATION IMPROVEMENT PROGRAM : FINANCIALLY CONSTRAINED
FFY 2011 THRU 2014 (FFY 2015-2016 Informative Only)

Click here to access the FFY 11-14(+2) STIP document: <http://hawaii.gov/dot/highways/STIP/110531%2011-14%20STIP%20Rev%20%232%20-2.pdf>

SYSTEM PRESERVATION PROJECTS		Project Description	Bridge Replacement Program (State)	Bridge Inspection & Appraisal (City)	Pavement Management System (State)	Roadway Pavement Condition Survey (City)	Cost Participation	Project Stage	Gap Closure?	Mandated?	Transit Friendly?	Oahu Regional ITS Architecture Consistency	Addresses SAFETEA-LU Planning Factor(s)?	Local Match Available?	Ready-to-Go?	ORTP Consistency	HSTP Goals and Objectives Code	Revision #2
OS83.	Interstate Route H-1, Installation of Access Control, Makakilo Interchange to Vicinity of H-1/H-2 Interchange	Replace and/or install upgraded access control chain link fence along Interstate Route H-1. This includes replacing existing barbed wire, that was installed to keep livestock out of the freeway. With the change in land use and diversified development in the area, fencing will be upgraded to meet current land use conditions.	L	N/A	L	N/A	L	H	N	N	N	N/A	Y	Y	Y	Proj.35	G101-2, G201-2, G301-2, G401	NEW project.
OS24.	Interstate Route H-1, Pearl City and Waimalu Viaduct Improvements, Phase 2	Replace, repair, and/or strengthen the Pearl City and Waimalu Viaduct concrete deck and other structural components, including guardrails. Project will be implemented in 5 phases.	H	N/A	L	N/A	L	H	Y	N	N	N/A	Y	Y	Y	Proj.36	G101-2, G201-2, G302	Defer and inflate CON from FY14 to 43.25M in FY16 to financially constrain the STIP. Delete Advance construction reimbursement in FY15.
OS29.	Interstate Route H-3, Seismic Retrofit, Halekou Interchange	Retrofit interchange structure to meet current seismic standards.	H	N/A	L	N/A	L	L	N	N	N	N/A	Y	Y	Y	Proj.36	G101-2, G201-2	Defer and inflate DES from FY14 to \$1.08M in FY16 to financially constrain the STIP.
OS30.	Interstate Route H-3, Seismic Retrofit, Kapaa Quarry, Structure Nos. 1 & 2 (Inbound & Outbound)	Retrofit interchange structure to meet current seismic standards.	H	N/A	L	N/A	L	L	N	N	N	N/A	Y	Y	Y	Proj.36	G101-2, G201-2	Defer \$600K of DES in FY16 to out years to financially constrain the STIP. Project will be deleted from the STIP.
OS31.	Interstate Route H-3, Seismic Retrofit, Mokapu Boulevard (Route 65) Interchange	Retrofit interchange structure to meet current seismic standards.	H	N/A	L	N/A	L	L	N	N	N	N/A	Y	Y	Y	Proj.36	G101-2, G201-2	Defer and inflate CON in FY15 to \$3.12M in FY16 to financially constrain the STIP.
OS32.	Kalaeloa Roadway Improvements, Vicinity of Barber's Point Naval Air Station	Bring roadways up to City standards and turn the roadway over to the City and County of Honolulu. Roadways include Roosevelt Avenue, Enterprise Avenue, and Coral Sea Road.	L	N/A	L	N/A	L	L	N	N	N	N/A	Y	Y	Y	Obj.6	G101-2, G201-2, G302	Defer \$1.014M of DES in FY16 to out years to financially constrain the STIP. Project will be deleted from the STIP.
OS33.	Kalaniana'ole Highway (Route 72), Bridge Replacement, Inoaole Stream Bridge, Waimanalo	Replace the existing bridge.	L	N/A	L	N/A	L	M	N	N	N	N/A	Y	Y	Y	Proj.36	G101-2, G201-2, G301-2, G401	Defer and inflate CON in FY14 to \$9.36M in FY15 to financially constrain the STIP.

DEPARTMENT OF TRANSPORTATION
STATEWIDE TRANSPORTATION IMPROVEMENT PROGRAM : FINANCIALLY CONSTRAINED
FFY 2011 THRU 2014 (FFY 2015-2016 Informative Only)

Click here to access the FFY 11-14(+2) STIP document: <http://hawaii.gov/dot/highways/STIP/110531%2011-14%20STIP%20Rev%20%232%20-2.pdf>

SYSTEM PRESERVATION PROJECTS		Project Description	Bridge Replacement Program (State)	Bridge Inspection & Appraisal (City)	Pavement Management System (State)	Roadway Pavement Condition Survey (City)	Cost Participation	Project Stage	Gap Closure?	Mandated?	Transit Friendly?	Oahu Regional ITS Architecture Consistency	Addresses SAFETEA-LU Planning Factor(s)?	Local Match Available?	Ready-to-Go?	ORTP Consistency	HSTP Goals and Objectives Code	Revision #2
OS37.	Kamehameha Highway, Bridge Replacement, Kaipapau Stream Bridge	Replace the existing bridge.	H	N/A	L	N/A	L	M	N	N	N	N/A	Y	Y	Y	Proj.36	G101-2, G201-2, G301-2, G401	Change scope from rehabilitation to replacement. The bridge's condition currently warrants replacement. Defer and inflate CON in FY11 to \$16.225M in FY15 to financially constrain the STIP. This project is being deferred because ROW acquisition is being held up by a lawsuit.
OS38.	Kamehameha Highway, Bridge Rehabilitation, Kawaioloa Stream Bridge	Rehabilitate the existing bridge by widening and strengthening to meet current State standards.	H	N/A	L	N/A	L	L	N	N	N	N/A	Y	Y	Y	Proj.36	G101-2, G201-2, G301-2, G401	DELETE project. HWY-DB says their inventory list has changed and this is no longer a high priority since it was widened in 1986 and currently has 6 ft shoulders.
OS39.	Kamehameha Highway, Bridge Rehabilitation, Laieloa Stream Bridge	Rehabilitate the existing concrete slab bridge on Kamehameha Highway in the vicinity of Laie.	H	N/A	L	N/A	L	M	N	N	N	N/A	Y	Y	Y	Proj.36	G101-2, G201-2, G301-2, G401	Defer and inflate \$175K for ROW in FY11 to \$182K in FY12. Defer and inflate \$2.6M for CON in FY12 to \$2.8M in FY14. ROW and CON will not be ready as programmed. EA-FONSI not scheduled for completion until 2012
OS40.	Kamehameha Highway, Bridge Rehabilitation, Makaua Stream Bridge	Rehabilitate the existing 44-foot long bridge by widening and strengthening to meet current State standards.	H	N/A	L	N/A	L	M	N	N	N	N/A	Y	Y	Y	Proj.36	G101-2, G201-2, G301-2, G401	Defer \$4.6M of CON from FY16 to out years to financially constrain the STIP.
OS41.	Kamehameha Highway, Bridge Rehabilitation, Waipilopilo Stream Bridge	Rehabilitate the existing concrete T-bridge on Kamehameha Highway in the vicinity of Hauula.	H	N/A	L	N/A	L	M	N	N	N	N/A	Y	Y	Y	Proj.36	G101-2, G201-2, G301-2, G401	Add \$200K for PreROW in FY11 and \$250K of ROW in FY12. Defer \$3.12M of CON in FY16 to out years to financially constrain the STIP.

DEPARTMENT OF TRANSPORTATION
STATEWIDE TRANSPORTATION IMPROVEMENT PROGRAM : FINANCIALLY CONSTRAINED
FFY 2011 THRU 2014 (FFY 2015-2016 Informative Only)

Click here to access the FFY 11-14(+2) STIP document: <http://hawaii.gov/dot/highways/STIP/110531%2011-14%20STIP%20Rev%20%232%20-2.pdf>

SYSTEM PRESERVATION PROJECTS		Project Description	Bridge Replacement Program (State)	Bridge Inspection & Appraisal (City)	Pavement Management System (State)	Roadway Pavement Condition Survey (City)	Cost Participation	Project Stage	Gap Closure?	Mandated?	Transit Friendly?	Oahu Regional ITS Architecture Consistency	Addresses SAFETEA-LU Planning Factor(s)?	Local Match Available?	Ready-to-Go?	ORTP Consistency	HSTP Goals and Objectives Code	Revision #2
OS42.	Kamehameha Highway, Bridge Replacement, Hoolapa Stream (Nanahu) Bridge	Replace the existing bridge.	H	N/A	L	N/A	L	L	N	N	N	N/A	Y	Y	Y	Proj.36	G101-2, G201-2, G301-2, G401	Defer \$780K of DES in FY16 to out years to financially constrain the STIP. Project will be deleted from the STIP.
OS43.	Kamehameha Highway, Bridge Replacement, Kaluanui Stream Bridge	Replace the existing bridge.	H	N/A	L	N/A	L	M	N	N	N	N/A	Y	Y	Y	Proj.36	G101-2, G201-2, G301-2, G401	Defer \$9.2M of CON from FY16 to out years to financially constrain the STIP.
OS44.	Kamehameha Highway, Bridge Replacement, Kaunala Stream Bridge	Replace the existing bridge.	H	N/A	L	N/A	L	L	N	N	N	N/A	Y	Y	Y	Proj.36	G101-2, G201-2, G301-2, G401	Defer \$710K of DES in FY16 to out years to financially constrain the STIP. Project will be deleted from the STIP.
OS45.	Kamehameha Highway, Bridge Replacement, Kawela Stream Bridge	Replace the existing bridge.	H	N/A	N/A	N/A	L	M	N	N	N	N/A	Y	Y	Y	Proj.36	G101-2, G201-2, G301-2, G401	Defer and inflate CON from FY14 to \$9.735M in FY16 to financially constrain the STIP.
OS46.	Kamehameha Highway, Bridge Replacement, Lauhulu Stream Bridge	Replace the existing bridge.	H	N/A	N/A	N/A	L	L	N	N	N	N/A	Y	Y	Y	Proj.36	G101-2, G201-2, G301-2, G401	Defer \$830K of DES in FY16 to out years to financially constrain the STIP. Project will be deleted from the STIP.
OS47.	Kamehameha Highway, Bridge Replacement, Papau Stream (Waipuhi) Bridge	Replace the existing bridge.	H	N/A	N/A	N/A	L	L	N	N	N	N/A	Y	Y	Y	Proj.36	G101-2, G201-2, G301-2, G401	Defer \$750K of DES in FY16 to out years to financially constrain the STIP. Project will be deleted from the STIP.

DEPARTMENT OF TRANSPORTATION
STATEWIDE TRANSPORTATION IMPROVEMENT PROGRAM : FINANCIALLY CONSTRAINED
FFY 2011 THRU 2014 (FFY 2015-2016 Informative Only)

Click here to access the FFY 11-14(+2) STIP document: <http://hawaii.gov/dot/highways/STIP/110531%2011-14%20STIP%20Rev%20%232%20-2.pdf>

SYSTEM PRESERVATION PROJECTS		Project Description	Bridge Replacement Program (State)	Bridge Inspection & Appraisal (City)	Pavement Management System (State)	Roadway Pavement Condition Survey (City)	Cost Participation	Project Stage	Gap Closure?	Mandated?	Transit Friendly?	Oahu Regional ITS Architecture Consistency	Addresses SAFETEA-LU Planning Factor(s)?	Local Match Available?	Ready-to-Go?	ORTP Consistency	HSTP Goals and Objectives Code	Revision #2
OS48.	Kamehameha Highway, Bridge Replacement, South Kahana Stream Bridge	Replace the existing bridge.	H	N/A	N/A	N/A	L	M	N	N	N	N/A	Y	Y	Y	Proj.36	G101-2, G201-2, G301-2, G401	Split ROW into PreROW. Add \$100K for PreROW in FY12. Defer and inflate remaining ROW from FY11 to FY13, which now shows \$946K. ROW maps and DES will not be complete in time. Defer \$10.8M in CON in FY15 to out years to financially constrain the STIP. EA-FONSI not scheduled to be complete until 2012.
OS49.	Kamehameha Highway, Bridge Replacement, Upper Poamoho Stream Bridge	Replace the existing multi-girder reinforced bridge on Kamehameha Highway in the vicinity of Wahiawa.	H	N/A	N/A	N/A	M	M	N	N	N	N/A	Y	Y	Y	Proj.36	G101-2, G201-2, G301-2, G401	Defer and inflate ROW from FY11 to \$1.04M in FY12. ROW maps will not be complete in time. Defer and inflate CON from FY14 to \$17.3M in FY16 to financially constrain the STIP. Delete advance construction reimbursement in FY15. This project was also selected for Context Sensitive Solutions (CSS), the addition of these requirements will also delay the design.
OS50.	Kamehameha Highway, Bridge Replacement, Waiahole Stream Bridge	Replace the existing concrete structure.	H	N/A	N/A	N/A	L	M	N	N	N	N/A	Y	Y	Y	Proj.36	G101-2, G201-2, G301-2, G401	Defer \$11M of CON from FY15 to out years to financially constrain the STIP. Project will be deleted from the STIP.
OS51.	Kamehameha Highway, Bridge Replacement, Waikane Stream Bridge	Replace the existing 44-foot long bridge by widening and strengthening to meet current State standards.	H	N/A	N/A	N/A	L	M	N	N	N	N/A	Y	Y	Y	Proj.36	G101-2, G201-2, G301-2, G401	Defer \$2.85M of CON from FY16 to out years to financially constrain the STIP.

DEPARTMENT OF TRANSPORTATION
STATEWIDE TRANSPORTATION IMPROVEMENT PROGRAM : FINANCIALLY CONSTRAINED
FFY 2011 THRU 2014 (FFY 2015-2016 Informative Only)

Click here to access the FFY 11-14(+2) STIP document: <http://hawaii.gov/dot/highways/STIP/110531%2011-14%20STIP%20Rev%20%232%20-2.pdf>

SYSTEM PRESERVATION PROJECTS		Project Description	Bridge Replacement Program (State)	Bridge Inspection & Appraisal (City)	Pavement Management System (State)	Roadway Pavement Condition Survey (City)	Cost Participation	Project Stage	Gap Closure?	Mandated?	Transit Friendly?	Oahu Regional ITS Architecture Consistency	Addresses SAFETEA-LU Planning Factor(s)?	Local Match Available?	Ready-to-Go?	ORTP Consistency	HSTP Goals and Objectives Code	Revision #2
OS52.	Kamehameha Highway, Lighting Improvements, Kalauao Strm Bridge to Pearl Harbor I/C	Upgrade/replace roadway lighting from Kalauao Stream Brigdge (milepost 20.7) to Pearl Harbor I/C (milepost 23.8).	L	N/A	L	N/A	L	M	N	N	N	N/A	Y	Y	Y	Proj.35	G101-3, G201-2, G301, G401	DELETE this project. Will re-evaluate this project after transit-related improvements are completed. (Project route number and limits were corrected)
OS54.	Kamehameha Highway, Rehabilitation, Cane Haul Road Structure, In-bound, Vicinity of Waipahu	Rehabilitate the existing structure.	H	N/A	L	N/A	L	M	N	N	N	N/A	Y	Y	Y	Proj.36	G101-2, G201-2, G301-2, G401	Defer \$3.936M of CON from FY16 to out years to financially constrain the STIP. Project will be deleted from the STIP.
OS55.	Kamehameha Highway, Rehabilitation, Cane Haul Road Structure, Out-bound, Vicinity of Waipahu	Rehabilitate the existing structure.	H	N/A	L	N/A	L	M	N	N	N	N/A	Y	Y	Y	Proj.36	G101-2, G201-2, G301-2, G401	Defer \$3.936M of CON from FY16 to out years to financially constrain the STIP. Project will be deleted from the STIP.
OS72.	Moanalua Freeway (Route H-201), Highway Lighting Improvements, Halawa Heights Off-Ramp to the Middle Street Overpass	Upgrade/replace existing freeway lighting on Moanalua Freeway, from the Halawa Heights westbound off-ramp (milepost 1.12) to the Moanalua/H-1 Freeway merge at Middle Street (milepost 4.09).	L	N/A	L	N/A	L	M	N	N	N	N/A	Y	Y	Y	Proj.35	G101-3, G201-2, G301, G401	Defer and inflate CON from FY13 to \$5.84M in FY14 to financially constrain the STIP.
OS73.	Moanalua Freeway (Route H-201), Highway Lighting Improvements, Halawa to the H-3 Freeway Overpass	Upgrade/replace existing freeway lighting on Moanalua Freeway from the Ewa end of the Moanalua Freeway (milepost 0) to the H-3 Freeway overpass (milepost 0.73).	L	N/A	L	N/A	L	M	N	N	N	N/A	Y	Y	Y	Proj.35	G101-3, G201-2, G301, G401	Defer and inflate CON from FY13 to \$2.34M in FY14 to financially constrain the STIP.
OS74.	Moanalua Freeway (Route H-201), Seismic Retrofit, Puuloa Interchange, Ramp "A"	Retrofit interchange structure to meet current seismic standards.	H	N/A	L	N/A	L	M	N	N	N	N/A	Y	Y	Y	Proj.36	G101-2, G201-2, G301	Defer and inflate CON from FY15 to \$3.95M in FY16 to financially constraint the STIP.
OS75.	Moanalua Freeway (Route H-201), Seismic Retrofit, Puuloa Separation	Retrofit interchange structure to meet current seismic standards.	H	N/A	L	N/A	L	M	N	N	N	N/A	Y	Y	Y	Proj.36	G101-2, G201-2, G301	Defer and inflate CON from FY15 to \$6.45M in FY16 to financially constraint the STIP.
CITY & COUNTY OF HONOLULU - FHWA																		

DEPARTMENT OF TRANSPORTATION
STATEWIDE TRANSPORTATION IMPROVEMENT PROGRAM : FINANCIALLY CONSTRAINED
FFY 2011 THRU 2014 (FFY 2015-2016 Informative Only)

Click here to access the FFY 11-14(+2) STIP document: <http://hawaii.gov/dot/highways/STIP/110531%2011-14%20STIP%20Rev%20%232%20-2.pdf>

SYSTEM PRESERVATION PROJECTS		Project Description	Bridge Replacement Program (State)	Bridge Inspection & Appraisal (City)	Pavement Management System (State)	Roadway Pavement Condition Survey (City)	Cost Participation	Project Stage	Gap Closure?	Mandated?	Transit Friendly?	Oahu Regional ITS Architecture Consistency	Addresses SAFETEA-LU Planning Factor(s)?	Local Match Available?	Ready-to-Go?	ORTP Consistency	HSTP Goals and Objectives Code	Revision #2
OC4.	Bridge Inspection and Appraisal	Inventory, inspect and appraise City bridges, including underwater inspection, surveys, scour survey/evaluation and preparation of plans for bridge repairs.	N/A	H	N/A	L	H	L	Y	Y	N	Y	Y	Y	Y	Proj.36	G101-2, G201-2	
OC9.	Seismic Bridge Retrofit	Research various bridge plans and files, do site inspections, conduct seismic evaluations, identify alternate schemes for seismic retrofit. Construct retrofit measures.	N/A	H	N/A	L	L	L	Y	Y	N	Y	Y	Y	Y	Proj.36	G101-2, G201-2	

DEPARTMENT OF TRANSPORTATION
STATEWIDE TRANSPORTATION IMPROVEMENT PROGRAM : FINANCIALLY CONSTRAINED
FFY 2011 THRU 2014 (FFY 2015-2016 Informative Only)

Click here to access the FFY 11-14(+2) STIP document: <http://hawaii.gov/dot/highways/STIP/110531%2011-14%20STIP%20Rev%20%232%20-2.pdf>

SAFETY PROJECTS		Project Description	Strategic Highway Safety Plan	Highway Safety Improvement Program	Rockfall Protection Study (State)	Cost Participation	Project Stage	Gap Closure?	Mandated?	Transit Friendly?	Oahu Regional ITS Architecture Consistency	Addresses SAFETEA-LU Planning Factor(s)?	Local Match Available?	Ready-to-Go?	ORTP Consistency	HSTP Goals and Objectives Code	Revision #2
OAHU : STATE - FHWA																	
OS4.	Farrington Highway (Route 93), Intersection Improvements, Haleakala Avenue (Route 8743)	Construct intersection improvements on Farrington Highway, such as a left-turn lane onto Haleakala Avenue, roadway widening, resurfacing, excavation, drainage, traffic signal modifications and underground utilities.	H	H	N/A	M	M	N	N	N	N/A	Y	Y	Y	Obj. 6	G101-4, G201-2, G301-2, G401	Defer \$4.5M CON from FY11 to \$9M in FY12. Revised CON to show current estimate. Added new advance construction reimbursement phase in FY13. Project deferred due to delays in environmental clearances. This proeject will go out together with OS5.
OS5.	Farrington Highway (Route 93), Intersection Improvements, Nanakuli Avenue (Route 8744)	Construct intersection improvements on Farrington Highway, such as a left-turn lane onto Nanakuli Avenue, roadway widening, resurfacing, roadway excavation, drainage, traffic signals, and landscaping.	H	H	N/A	L	M	N	N	N	N/A	Y	Y	Y	Obj.6	G101-4, G201-2, G301-2, G401	Defer and increase \$5.5M CON from FY11 to \$10M in FY12. Revised CON to show current estimate. Project deferred due to delays in environmental clearances. This project will go out together with OS4.
OS6.	Farrington Highway (Route 93), Safety Improvements, Vicinity of Leihoku Street to Makau Street Kili Drive	Installation of milled rumble strips on centerline and shoulders; pavement markings, striping and signing.	H	H	N/A	L	M	N	N	N	N/A	Y	Y	Y	Obj.6	G101-3, G201-2, G301-2, G401	Revised project limits to end at Kili Drive instead of Makau Street. Resurfacing project will take care of safety improvements of omitted limits.
OS14.	Guardrail and Shoulder Improvements, Various Locations	Install and upgrade guardrails to bridge end post connections, bridge railing, guardrail end terminals, crash attenuators, miscellaneous drainage, and other appurtenant improvements.	H	H	N/A	L	M	N	N	N	N/A	Y	Y	Y	Proj.35	G101-2, G201-2, G301-2, G401	Changed funding category from HSIP and Interstate Maintenance to STP Flexible.

DEPARTMENT OF TRANSPORTATION
STATEWIDE TRANSPORTATION IMPROVEMENT PROGRAM : FINANCIALLY CONSTRAINED
FFY 2011 THRU 2014 (FFY 2015-2016 Informative Only)

Click here to access the FFY 11-14(+2) STIP document: <http://hawaii.gov/dot/highways/STIP/110531%2011-14%20STIP%20Rev%20%232%20-2.pdf>

SAFETY PROJECTS		Project Description	Strategic Highway Safety Plan	Highway Safety Improvement Program	Rockfall Protection Study (State)	Cost Participation	Project Stage	Gap Closure?	Mandated?	Transit Friendly?	Oahu Regional ITS Architecture Consistency	Addresses SAFETEA-LU Planning Factor(s)?	Local Match Available?	Ready-to-Go?	ORTP Consistency	HSTP Goals and Objectives Code	Revision #2
OS19.	Interstate Route H-1, Guardrail and Shoulder Improvements, Kapiolani Interchange to Ainakoa Avenue	Install and/or upgrade existing guardrails, crash cushions, and concrete barriers to meet current standards.	H	L	N/A	L	M	N	N	N	N/A	Y	Y	Y	Proj.35	G101-2, G201-2, G301-2, G401	Defer and inflate CON from FY14 to \$6.24M FY15 to financially constrain the STIP.
OS20.	Interstate Route H-1, Guardrail and Shoulder Improvements, Middle Street (Route 7415) to Punchbowl Street (Route 7516)	Install and/or upgrade existing guardrails, crash cushions, and concrete barriers to meet current standards.	H	L	N/A	L	M	N	N	N	N/A	Y	Y	Y	Proj.35	G101-2, G201-2, G301-2, G401	Defer and inflate CON from FY14 to \$5.41M in FY15 to financially constrain the STIP.
OS28.	Interstate Route H-3, Safety Improvements, Vicinity of Kamehameha Highway Off-Ramp to Kaneohe Marine Corps Base Hawaii	Scope includes but is not limited to installation of milled rumble strips on shoulders, pavement markings and signing.	H	H	N/A	L	L	N	N	N	N/A	Y	Y	Y	Obj.6	G101-3, G201-2, G301-2, G401	
OS34.	Kalaniana'ole Highway (Route 72), Improvements, Olomana Golf Course to Waimanalo Beach Park, Phase I	Construct traffic operational and safety improvements on Kalaniana'ole Highway, from Olomana Golf Course to Poalima Street. Project includes turning lanes, bus pullouts, and lighting improvements.	H	L	N/A	L	M	N	N	Y	N/A	Y	Y	Y	Proj.8	G101-3, G201-2, G301-2, G401	Defer and inflate CON from FY13 to \$13.52M in FY14 and delete advance construction reimbursement to financially constrain the STIP.
OS35.	Kalaniana'ole Highway (Route 72), Improvements, Olomana Golf Course to Waimanalo Beach Park, Phase II	Construct traffic operational and safety improvements on Kalaniana'ole Highway, from Poalima Street to Aloiloi Street. Project includes turning lanes, bus pullouts, and lighting improvements.	H	L	N/A	L	L	N	N	Y	N/A	Y	Y	Y	Proj.8	G101-3, G201-2, G301-2, G401	
OS36.	Kalaniana'ole Highway (Route 72), Improvements, Olomana Golf Course to Waimanalo Beach Park, Phase III	Construct traffic operational and safety improvements on Kalaniana'ole Highway, from Aloiloi Street to Waimanalo Beach Park. Project includes turning lanes, bus pullouts, and lighting improvements.	H	L	N/A	L	L	N	N	Y	N/A	Y	Y	Y	Proj.8	G101-3, G201-2, G301-2, G401	Defer \$800K of DES in FY16 to out years to financially constrain the STIP. Project will be deleted from the STIP.

DEPARTMENT OF TRANSPORTATION
STATEWIDE TRANSPORTATION IMPROVEMENT PROGRAM : FINANCIALLY CONSTRAINED
FFY 2011 THRU 2014 (FFY 2015-2016 Informative Only)

Click here to access the FFY 11-14(+2) STIP document: <http://hawaii.gov/dot/highways/STIP/110531%2011-14%20STIP%20Rev%20%232%20-2.pdf>

SAFETY PROJECTS		Project Description	Strategic Highway Safety Plan	Highway Safety Improvement Program	Rockfall Protection Study (State)	Cost Participation	Project Stage	Gap Closure?	Mandated?	Transit Friendly?	Oahu Regional ITS Architecture Consistency	Addresses SAFETEA-LU Planning Factor(s)?	Local Match Available?	Ready-to-Go?	ORTP Consistency	HSTP Goals and Objectives Code	Revision #2
OS56.	Kamehameha Highway, Rockfall Protection, Waimea Bay	Initiate rockfall mitigation measures along Kamehameha Highway at Waimea Bay (milepost 5.4 to milepost 5.52).	L	L	H	L	M	N	N	N	N/A	Y	Y	Y	Proj.5	G101-3, G201-2, G301, G401	
OS57.	Kamehameha Highway, Rockfall Protection, Waimea Bay (Sunset Beach Side)	Initiate rockfall mitigation measures along Kamehameha Highway at Waimea Bay (milepost 5.63 to milepost 5.9).	L	L	H	L	M	N	N	N	N/A	Y	Y	Y	Proj.5	G101-3, G201-2, G301, G401	Defer \$7.5M of CON in FY16 to out years to financially constrain the STIP. Project will be deleted from the STIP.
OS58.	Kamehameha Highway, Safety Improvements, Kahana Valley Road to Kaawa Bridge	Installation of milled rumble strips on centerline and shoulders, check superelevation along entire segment, pavement markings, striping and signing.	H	H	N/A	L	M	N	N	N	N/A	Y	Y	Y	Obj.6	G101-3, G201-2, G301-2, G401	Defer and inflate CON from FY11 to \$1.352M in FY12 culvert design issues will require 404 and 401 permits that will delay the project.
OS59.	Kamehameha Highway, Safety Improvements, Vicinity of Makao Road to the Vicinity of Haleaha Road	Extend paved shoulder 2 feet, extend drainage culverts and headwalls, install milled centerline and shoulder line rumble strips, signing and pavement marking.	H	H	N/A	L	M	N	N	N	N/A	Y	Y	Y	Obj.6	G101-4, G201-2, G301-2, G401	DELETE this project since the work done will be completed in another project.
OS60.	Kamehameha Highway, Safety Improvements, Vicinity of Pohuehue Road to Waikane Valley Road	Scope includes but is not limited to installation of milled rumble strips on centerline and shoulders, superelevation assessment (to determine treatment) along entire segment, shoulder widening, drainage improvements, installation of guardrail and end treatments, pavement markings and signing.	H	H	N/A	L	L	N	N	N	N/A	Y	Y	Y	Obj.6	G101-4, G201-2, G301-2, G401	
OS61.	Kamehameha Highway, Safety Improvements, Vicinity of Pualalea Street to Malaekahana and Vicinity of Laie-Maloo Bridge to Hauula Bridge	Installation of milled rumble strips on centerline and shoulders, check superelevation along entire segment, pavement markings, striping and signing.	H	H	N/A	L	M	N	N	N	N/A	Y	Y	Y	Obj.6	G101-3, G201-2, G301-2, G401	DELETE this project. A portion of the project limits have been deleted since they will be covered in another resurfacing project.

DEPARTMENT OF TRANSPORTATION
STATEWIDE TRANSPORTATION IMPROVEMENT PROGRAM : FINANCIALLY CONSTRAINED
FFY 2011 THRU 2014 (FFY 2015-2016 Informative Only)

Click here to access the FFY 11-14(+2) STIP document: <http://hawaii.gov/dot/highways/STIP/110531%2011-14%20STIP%20Rev%20%232%20-2.pdf>

SAFETY PROJECTS		Project Description	Strategic Highway Safety Plan	Highway Safety Improvement Program	Rockfall Protection Study (State)	Cost Participation	Project Stage	Gap Closure?	Mandated?	Transit Friendly?	Oahu Regional ITS Architecture Consistency	Addresses SAFETEA-LU Planning Factor(s)?	Local Match Available?	Ready-to-Go?	ORTP Consistency	HSTP Goals and Objectives Code	Revision #2
OS62.	Kamehameha Highway, Safety Improvements, Vicinity of Waikane Valley Road to Kahekili Highway to Waikane Valley Road	Installation of milled rumble strips on centerline and shoulders, check superelevation along entire segment, pavement markings, striping and signing.	H	H	N/A	L	M	N	N	N	N/A	Y	Y	Y	Obj.6	G101-3, G201-2, G301-2, G401	Reversed project limits for consistency. Defer and inflate CON from FY11. Culvert design issues will require 404 and 401 permits that will delay the project.
OS63.	Kamehameha Highway, Shoreline Protection, Vicinity of Hauula	Construct shoreline protection measures for areas in Hauula (#14) susceptible to ocean erosion due to high wave action.	L	L	N/A	L	L	N	N	N	N/A	Y	Y	Y	Obj.6	G101-2, G201-2, G301	Defer \$5.6M of CON in FY16 to out years to financially constrain the STIP. Federalize DES.
OS64.	Kamehameha Highway, Shoreline Protection, Vicinity of Kaaawa	Construct shoreline protection measures for areas in Kaaawa (#10) susceptible to ocean erosion due to high wave action.	L	L	N/A	L	L	N	N	N	N/A	Y	Y	Y	Obj. 6	G101-2, G201-2, G301	Defer \$10.4M of CON in FY16 to out years to financially constrain the STIP. Federalize DES.
OS65.	Kamehameha Highway, Shoreline Protection, Vicinity of Punaluu	Construct shoreline protection measures for areas in Punaluu (#9) susceptible to ocean erosion due to high wave action.	L	L	N/A	L	M	N	N	N	N/A	Y	Y	Y	Obj. 6	G101-2, G201-2, G301	Defer and inflate CON in FY11 to \$6.75M in FY14 due to permit delays and to financially constrain the STIP.
OS66.	Kamehameha Highway, Traffic Improvements, Kahaluu to Waimea Bay (Kahekili Highway [Route 83] to Kaalaea Stream)	Construct roadway geometric adjustments to improve safety and construct possible intersection improvements along Kamehameha Highway, from Kahekili Highway to Kaalaea Stream. Replace two bridge structures.	H	L	N/A	L	L	N	N	N	N/A	Y	Y	Y	Proj.36	G101-3, G201-2, G301-2, G401	Defer \$1.04M of DES in FY16 to out years to financially constrain the STIP. Project will be deleted from the STIP.
OS71.	Moanalua Freeway (Route 78) and Interstate Route H-2, Guardrail and Shoulder Improvements	Install and/or upgrade the existing guardrails. Reconstruct and pave road shoulders.	H	L	N/A	L	M	N	N	N	N/A	Y	Y	Y	Proj.35	G101-2, G201-2, G301-2, G401	Defer and inflate CON from FY14 to FY15 to financially constrain the STIP.
OS77.	Pali Highway (Route 61), Rockfall Protection Between the Two Tunnels	Reduce possible rockfall and/or landslides along Pali Highway between the two Pali Highway Tunnels.	L	L	H	L	L	N	N	N	N/A	Y	Y	Y	Proj.5	G101-3, G201-2, G301, G401	Defer \$1.3M of PLN/DES from FY16 to out years to financially constrain the STIP. Project will be deleted from the STIP.

DEPARTMENT OF TRANSPORTATION
STATEWIDE TRANSPORTATION IMPROVEMENT PROGRAM : FINANCIALLY CONSTRAINED
FFY 2011 THRU 2014 (FFY 2015-2016 Informative Only)

Click here to access the FFY 11-14(+2) STIP document: <http://hawaii.gov/dot/highways/STIP/110531%2011-14%20STIP%20Rev%20%232%20-2.pdf>

SAFETY PROJECTS		Project Description	Strategic Highway Safety Plan	Highway Safety Improvement Program	Rockfall Protection Study (State)	Cost Participation	Project Stage	Gap Closure?	Mandated?	Transit Friendly?	Oahu Regional ITS Architecture Consistency	Addresses SAFETEA-LU Planning Factor(s)?	Local Match Available?	Ready-to-Go?	ORTP Consistency	HSTP Goals and Objectives Code	Revision #2
OS78.	Pali Highway (Route 61), Rockfall Protection, Kailua Side of Kailua-Bound Tunnels	Reduce possible rockfall and/or landslides along Pali Highway on the Kailua side of the Kailua Tunnels.	L	L	H	L	L	N	N	N	N/A	Y	Y	Y	Proj.5	G101-3, G201-2, G301, G401	Defer \$1.8M of PLN/DES from FY15 to out years to financially constrain the STIP. Project will be deleted from the STIP.
CITY & COUNTY OF HONOLULU - FHWA																	
OC2.	Alapai Transportation Management Center	The transportation management center will be a joint communication center to be built behind the Alapai Transit Center. The center will combine transportation management w/ City, State and emergency response agencies. The City's Emergency Op Center will be relocated to the JTMC.	N/A	N/A	N/A	L	M	N/A	N	Y	Y	Y	Y	Y	Proj.1	G101-2, G104, G201-2, G302, G401, G501	Cost estimates and schedules have been updated and DES and CON have been broken into parts.
OC10.	Traffic Improvements at Various Locations	Provide traffic congestion relief and improve safety at locations such as Dillingham Boulevard and Waiakamilo Road, Haleiwa Road and Kamehameha Highway, Palolo and Nanakuli.	L	L	N/A	L	M	N	N	N	N/A	Y	Y	Y	Obj.6	G101-3, G201-2, G301, G401	Some phases have been identified while others are to be determined later. Cost estimates and schedules have been updated.
OC12.	Upgrade Pedestrian Signals at Various Locations	Install and upgrade pedestrian signals island wide to the new countdown pedestrian signals. The project will also upgrade existing pedestrian push buttons to ADA compliant push buttons.	L	L	N/A	L	L	N	N	N	N/A	Y	Y	Y	Obj.6	G101-3, G201-2, G301, G401	Cost estimates and schedules have been updated.

DEPARTMENT OF TRANSPORTATION
STATEWIDE TRANSPORTATION IMPROVEMENT PROGRAM : FINANCIALLY CONSTRAINED
FFY 2011 THRU 2014 (FFY 2015-2016 Informative Only)

Click here to access the FFY 11-14(+2) STIP document: <http://hawaii.gov/dot/highways/STIP/110531%2011-14%20STIP%20Rev%20%232%20-2.pdf>

CONGESTION MITIGATION PROJECTS		Project Description	Congestion Management Process	Highway Safety Improvement Program	Travel Time or Delay Analysis	Project Location	Cost Participation	Project Stage	Traffic Signal Warrants	Gap Closure?	Mandated?	Transit Friendly?	Oahu Regional ITS Architecture Consistency	Addresses SAFETEA-LU Planning Factor(s)?	Local Match Available?	Ready-to-Go?	ORTP Consistency	HSTP Goals and Objectives Code	Revision #2
OAHU : STATE - FHWA																			
OS8.	Freeway Management System, Interstate H-1, H-2, and Moanalua Freeway (Routes H-201 and 78), Phase 1C	The project consists of installation of closed-circuit television (CCTV) cameras, vehicle detectors, cabinets, and communication equipment. Minor interior modifications of the H-3 Control Center will be done to accommodate system improvements. This project will be implemented in phases.	N/A	L	N/A	H	L	M	N/A	N	N	N	Y	Y	Y	Y	Proj.4	G101-2, G104, G201-2, G301-2, G401	
OS9.	Freeway Management System, Interstate H-1, H-2, and Moanalua Freeway (Routes H-201 and 78), Phase 2A	The project consists of installation of closed-circuit television (CCTV) cameras, vehicle detectors, cabinets, and communication equipment. Minor interior modifications of the H-3 Control Center will be done to accommodate system improvements. This project will be implemented in phases.	N/A	L	N/A	H	L	L	N/A	N	N	N	Y	Y	Y	Y	Proj.4	G101-2, G104, G201-2, G301-2, G401	
OS10.	Freeway Management System, Interstate H-1, H-2, and Moanalua Freeway (Routes H-201 and 78), Phase 2B	The project consists of installation of closed-circuit television (CCTV) cameras, vehicle detectors, cabinets, and communication equipment. Minor interior modifications of the H-3 Control Center will be done to accommodate system improvements. This project will be implemented in phases.	N/A	L	N/A	H	L	L	N/A	N	N	N	Y	Y	Y	Y	Proj.4	G101-2, G104, G201-2, G301-2, G401	
OS11.	Freeway Management System, Interstate H-1, H-2, and Moanalua Freeway (Routes H-201 and 78), Phase 3A	The project consists of installation of closed-circuit television (CCTV) cameras, vehicle detectors, cabinets, and communication equipment. Minor interior modifications of the H-3 Control Center will be done to accommodate system improvements. This project will be implemented in phases.	N/A	L	N/A	H	L	L	N/A	N	N	N	Y	Y	Y	Y	Proj.4	G101-2, G104, G201-2, G301-2, G401	
OS12.	Freeway Management System, Interstate H-1, H-2, and Moanalua Freeway (Routes H-201 and 78), System Manager	The Freeway Management System's System Manager will assist the State with managing and guiding the Intelligent Transportation System (ITS) program. This includes software development, equipment procurement assistance, acceptance testing, performance monitoring, and strategic planning.	N/A	L	N/A	H	L	L	N/A	N	N	N	Y	Y	Y	Y	Proj.4	G101-2, G104, G201-2, G301-2, G401	Increased estimate for DES in FY11 from \$1.622M to \$4.0M.

DEPARTMENT OF TRANSPORTATION
STATEWIDE TRANSPORTATION IMPROVEMENT PROGRAM : FINANCIALLY CONSTRAINED
FFY 2011 THRU 2014 (FFY 2015-2016 Informative Only)

Click here to access the FFY 11-14(+2) STIP document: <http://hawaii.gov/dot/highways/STIP/110531%2011-14%20STIP%20Rev%20%232%20-2.pdf>

CONGESTION MITIGATION PROJECTS		Project Description	Congestion Management Process	Highway Safety Improvement Program	Travel Time or Delay Analysis	Project Location	Cost Participation	Project Stage	Traffic Signal Warrants	Gap Closure?	Mandated?	Transit Friendly?	Oahu Regional ITS Architecture Consistency	Addresses SAFETEA-LU Planning Factor(s)?	Local Match Available?	Ready-to-Go?	ORTP Consistency	HSTP Goals and Objectives Code	Revision #2
OS13.	Freeway Service Patrol	Operate roving service patrols. Services include towing of disabled vehicles, removing debris, providing basic fire extinguisher use, deploying traffic control devices, assisting the HPD, HFD, and EMS at crash scenes & other incidents, assisting sick or injured motorists with basic first aid, & notifying 911 of incidents.	N/A	L	N/A	H	L	H	N/A	N	N	N	Y	Y	Y	Y	Proj.4	G101-2, G201-2, G301-2, G401	
OS23.	Interstate Route H-1, Lunalilo Street Off-Ramp and On-Ramp	Improve operation and capacity on the westbound H-1 freeway by modifying the weaving movements between the Lunalilo Street On-ramp and the Vineyard Boulevard Off-Ramp by restriping freeway lanes from the Punahou Street On-ramp to the Pali Highway Off-ramp.	N/A	L	N/A	M	L	M	N/A	N	N	N	N/A	Y	Y	Y	Proj.16	G101-2, G104, G201-2, G301-2, G401	Defer and inflate DES/CON from \$5M in FY11 to \$5.85M in FY15. Studies indicate the current build alternatives are not feasible. More studies are necessary.
OS53.	Kamehameha Highway, Realignment, Vicinity of Kawaihoa Beach	Plan a new highway which would bypass a portion of Kamehameha Highway, on the North Shore. The project proposes to construct a realignment of Kamehameha Highway, from Haleiwa to the vicinity of Waimea Bay, a total distance of approximately 4.2 miles.	N/A	L	N/A	M	L	L	N	N	N	N	N/A	Y	Y	Y	Obj.11	G101-2, G104, G201-2, G301-2, G401	Defer \$2.84M of DES from FY16 to out years to financially constrain the STIP. Project will be deleted from the STIP.
OS80.	Vanpool Program, Oahu	Encourage ridesharing during the peak commuting hours to reduce congestion by providing qualified users with a State-subsidized van.	N/A	L	N/A	H	L	H	N	N	N	N	N/A	Y	Y	Y	Proj.7	G101-4, G201-2, G301-2, G401	
CITY & COUNTY OF HONOLULU - FHWA																			
OC5.	Computerized Traffic Control System	Upgrade and expand fiber optic lines, closed-circuit television (CCTV) cameras, data collection and signal control in the urban center and outlying areas for connectivity to the Honolulu Traffic Control Center.	H	L	N/A	M	L	L	N/A	Y	N	N	Y	Y	Y	Y	Proj.4	G101-2, G104, G201-2, G301-2, G401	Cost estimates and schedules have been updated.
OC6.	Kapolei Parkway (Route 8920), Kunehi Street to Kamokila Boulevard	Construct Kapolei Parkway from Kanehi Street to Kamokila Boulevard. Kamokila Boulevard to Kama'aha Avenue will be federally funded. The segment from Kama'aha Avenue to Kunehi Street will be locally funded.	L	N/A	H	H	M	M	N/A	Y	N	Y	N/A	Y	Y	Y	Proj.26	G101-4, G201-2, G301-2, G401	Project has been broken into phases. Cost estimates and schedules have been updated.

DEPARTMENT OF TRANSPORTATION
STATEWIDE TRANSPORTATION IMPROVEMENT PROGRAM : FINANCIALLY CONSTRAINED
FFY 2011 THRU 2014 (FFY 2015-2016 Informative Only)

Click here to access the FFY 11-14(+2) STIP document: <http://hawaii.gov/dot/highways/STIP/110531%2011-14%20STIP%20Rev%20%232%20-2.pdf>

CONGESTION MITIGATION PROJECTS		Project Description	Congestion Management Process	Highway Safety Improvement Program	Travel Time or Delay Analysis	Project Location	Cost Participation	Project Stage	Traffic Signal Warrants	Gap Closure?	Mandated?	Transit Friendly?	Oahu Regional ITS Architecture Consistency	Addresses SAFETEA-LU Planning Factor(s)?	Local Match Available?	Ready-to-Go?	ORTP Consistency	HSTP Goals and Objectives Code	Revision #2
OC11.	Traffic Signals at Various Locations	Install, modify and upgrade traffic signals island wide, including ADA improvements, signs and markings and interties. The project provides for the safe and orderly movements of pedestrians and vehicles at high-risk intersections. The project upgrades existing intersections, adds left turn phases, increases signal visibility and coordination.	H	L	N	M	L	L	Y	N/A	Y	N	Y	Y	Y	Y	Proj.34	G101-4, G201-2, G301-2, G401	Cost estimates and schedules have been updated.
CITY & COUNTY OF HONOLULU - FTA																			
OC20.	Transfer to FHWA for Vanpool	Transfer FTA funds to FHWA for HDOT's Vanpool program.	L	L	L	H	L	H	N	N	Y	N	N/A	Y	N/A	Y	Proj.7	G101-4, G201-2, G301-2, G401	

DEPARTMENT OF TRANSPORTATION
STATEWIDE TRANSPORTATION IMPROVEMENT PROGRAM : FINANCIALLY CONSTRAINED
FFY 2011 THRU 2014 (FFY 2015-2016 Informative Only)

Click here to access the FFY 11-14(+2) STIP document: <http://hawaii.gov/dot/highways/STIP/110531%2011-14%20STIP%20Rev%20%232%20-2.pdf>

MODERNIZATION PROJECTS		Project Description	Congestion Management Process	Highway Safety Improvement Program	Travel Time or Delay Analysis	Project Location	Cost Participation	Project Stage	Gap Closure?	Mandated?	Transit Friendly?	Oahu Regional ITS Architecture Consistency	Addresses SAFETEA-LU Planning Factor(s)?	Local Match Available?	Ready-to-Go?	ORTP Consistency	HSTP Goals and Objectives Code	Revision #2
OAHU : STATE - FHWA																		
OS7.	Fort Barrette Road (Route 901), Widening, Farrington Highway (Route 9107) to Barber's Point Gate	Widen Fort Barrette Road to four lanes and construct other improvements, including right- and left-turn lanes, sidewalk, bikeway, highway lighting, drainage, traffic signals, landscaping, and other improvements.	N/A	L	H	H	L	M	N	N	Y	N/A	Y	Y	Y	Proj.12	G101-4, G201-2, G302, G401, G502	Defer and inflate CON from FY14 to \$23.8M in FY16 to financially constrain the STIP. Advance construction reimbursement has been deleted.
OS17.	Interstate Route H-1, Eastbound Improvements, Vicinity of Ola Lane to Vineyard Boulevard Off-Ramp	Construct an additional lane on Interstate Rte H-1 in the eastbound direction from the vicinity of Middle Street/Ola Lane to the vicinity of the H-1 Vineyard Boulevard off-ramp.	N/A	L	H	H	L	L	N	N	N	N/A	Y	Y	Y	Proj.15	G101-2, G104, G201-2, G302, G401, G502	Defer and inflate ROW from FY11 to FY13. Defer and inflate DES/CON from FY11 to FY13 and incr fed share from \$11M to \$30.8M. Defer AdvCON from FY12 to FY14 and decr fed reimbursement from \$45M to \$25M. Defer AdvCON from FY13 to FY15 and decr fed reimbursement from \$28.15M to \$25M. Updated total project cost is \$111.8M. This project will be deferred to re-evaluate and refine the scope of work and the design-build process.
OS18.	Interstate Route H-1, Eastbound Improvements, Ward Avenue (Route 7511) On-Ramp to University Interchange	Improve the eastbound traffic flow from Ward Avenue to the University Interchange.	N/A	L	N/A	M	L	L	N	N	N	N/A	Y	Y	Y	Proj.23	G101-2, G104, G201-2, G302, G401, G502	Defer and inflate DES in FY13 to \$920K in FY14 to financially constrain the STIP.

DEPARTMENT OF TRANSPORTATION
STATEWIDE TRANSPORTATION IMPROVEMENT PROGRAM : FINANCIALLY CONSTRAINED
FFY 2011 THRU 2014 (FFY 2015-2016 Informative Only)

Click here to access the FFY 11-14(+2) STIP document: <http://hawaii.gov/dot/highways/STIP/110531%2011-14%20STIP%20Rev%20%232%20-2.pdf>

MODERNIZATION PROJECTS		Project Description	Congestion Management Process	Highway Safety Improvement Program	Travel Time or Delay Analysis	Project Location	Cost Participation	Project Stage	Gap Closure?	Mandated?	Transit Friendly?	Oahu Regional ITS Architecture Consistency	Addresses SAFETEA-LU Planning Factor(s)?	Local Match Available?	Ready-to-Go?	ORTP Consistency	HSTP Goals and Objectives Code	Revision #2
OS22.	Interstate Route H-1, Kapolei Interchange Complex	Phase 2 and Phase 3 will complete the construction of the Wakea Street Separation and its associated ramps. Phase 4 and 5 will complete the ultimate buildout of the Kapolei IC Complex including the completion of Palailai and Makakilo Interchanges.	N/A	L	H	H	M	M	N	N	N	N/A	Y	Y	Y	Proj.14	G101-2, G104, G201-2, G302, G401	Defer and inflate Phase 2 to 2013. Combine Phase 2 and 3 and program in 2013. These phases were split into two separate phases in a previous year to qualify for TIGER 2 funding. Unfortunately, TIGER 2 funds were not awarded to this project, therefore these phases will be recombined. Defer Phases 4 and 5 from FY13 to FY15.
OS25.	Interstate Route H-1, PM Contraflow, Westbound, Waiawa Interchange Improvements, Phase I	This is the first increment of the PM contraflow project. Add a westbound lane, for a total of four lanes, through the Waiawa Interchange. This project involves restriping the Interstate H-1 from the Waiawa Interchange to Waikale.	N/A	L	H	H	L	M	Y	N	Y	N/A	Y	Y	Y	Proj.19	G101-2, G104, G201-2, G302, G401, G502	Defer and inflate CON from FY12 to \$16.85M in FY15 to financially constrain the STIP. The accompanying phase that went out to bid as a design-build project is currently being held up by a bid protest.
OS26.	Interstate Route H-1, Waiau Interchange to Halawa Interchange, Widening, Eastbound	Widen H-1 Freeway to six lanes from Waiau Interchange to Halawa Interchange in the eastbound direction, and restore current freeway lane width and shoulder standards. Project may be phased due to high cost.	N/A	L	H	H	L	L	N	N	N	N/A	Y	Y	Y	Proj.45	G101-2, G104, G201-2, G302, G401, G502	Defer \$4.326M in DES in FY16 to out years to financially constrain the STIP. Project will be deleted from the STIP.
OS27.	Interstate Route H-1, Waiawa Interchange, Westbound, Waipahu Off-Ramp Improvements	Widen the westbound Waipahu off-ramp from one to two lanes.	N/A	L	H	H	L	L	N	N	N	N/A	Y	Y	Y	Proj.21	G101-2, G104, G201-2, G302, G401, G502	Defer and inflate DES in FY15 to \$3.432M in FY16 to financially constrain the STIP.

DEPARTMENT OF TRANSPORTATION
STATEWIDE TRANSPORTATION IMPROVEMENT PROGRAM : FINANCIALLY CONSTRAINED
FFY 2011 THRU 2014 (FFY 2015-2016 Informative Only)

Click here to access the FFY 11-14(+2) STIP document: <http://hawaii.gov/dot/highways/STIP/110531%2011-14%20STIP%20Rev%20%232%20-2.pdf>

MODERNIZATION PROJECTS		Project Description	Congestion Management Process	Highway Safety Improvement Program	Travel Time or Delay Analysis	Project Location	Cost Participation	Project Stage	Gap Closure?	Mandated?	Transit Friendly?	Oahu Regional ITS Architecture Consistency	Addresses SAFETEA-LU Planning Factor(s)?	Local Match Available?	Ready-to-Go?	ORTP Consistency	HSTP Goals and Objectives Code	Revision #2
OS68.	Kamehameha Highway, Widening, Lanikuhana Avenue (Route 7042) to Ka Uka Boulevard (Route 7160)	Widen Kamehameha Highway to four-lanes with shoulders for bike paths and disabled vehicles.	N/A	L	H	H	L	L	Y	N	N	N/A	Y	Y	Y	Proj.25	G101-4, G201-2, G302, G401, G502	Defer \$4.3M of DES in FY16 to out years to financially constrain the STIP. Project will be deleted from the STIP.
OS76.	North-South Road (Kualakai Parkway) (Route 8930), Kapolei Parkway (Route 8920) to Vicinity of the H-1 Freeway, Phase II	Phase IB consisted of constructing the interim roadway from Kapolei Parkway to Farrington Highway. Phase IC involved constructing the roadway from Farrington Highway to the H-1 Freeway, including a full-diamond interchange at the H-1 Freeway. Phase II involves continuation of the build out of North-South Road to six (6) lanes.	N/A	L	H	H	L	H	Y	N	Y	N/A	Y	Y	Y	Proj.28	G101-2, G104, G201-2, G302, G401, G502	Defer \$700K of DES in FY16 to out years to financially constrain the STIP. Project will be deleted from the STIP.
OS81.	Vineyard Boulevard (Route 98), Improvements, Vicinity of Queen's Medical Center	Install a right turn lane from Lusitana Street to the Vineyard Boulevard eastbound freeway on-ramp. This project being designed by QMC.	N/A	L	N/A	M	H	M	N	Y	N	N/A	Y	Y	Y	Obj.9	G101-2, G104, G201-2, G302, G401	
CITY & COUNTY OF HONOLULU - FHWA																		
OC7.	Makakilo Drive (Route 8810) Extension	Construct an extension of Makakilo Drive from Palehua Subdivision to the H-1 Freeway	N/A	N/A	H	M	L	M	Y	N	N	N/A	Y	Y	Y	Proj.29	G101-4, G201-2, G302, G401, G502	
OC8.	Salt Lake Boulevard (Route 7311), Widening, Maluna Street to Ala Liliko'i Street	Widen Salt Lake Boulevard from two to six lanes, between Maluna Street and Ala Liliko'i Street.	H	L	M	M	M	L	Y	N	Y	Y	Y	N	N	Obj.11	G101-2, G104, G201-2, G302, G401, G502	

**DEPARTMENT OF TRANSPORTATION
STATEWIDE TRANSPORTATION IMPROVEMENT PROGRAM : FINANCIALLY CONSTRAINED
FFY 2011 THRU 2014 (FFY 2015-2016 Informative Only)**

Click here to access the FFY 11-14(+2) STIP document: <http://hawaii.gov/dot/highways/STIP/110531%2011-14%20STIP%20Rev%20%232%20-2.pdf>

ENHANCEMENT PROJECTS		Project Description	Enhancement Program	Non-Enhancement Funding	Cost Participation	Project Stage	Gap Closure?	Mandated?	Transit Friendly?	Oahu Regional ITS Architecture Consistency	Addresses SAFETEA-LU Planning Factor(s)?	Local Match Available?	Ready-to-Go?	ORTP Consistency	HSTP Goals and Objectives Code	Revision #2
OAHU : STATE - FHWA																
OS84.	Kalaniana'ole Highway Bicycle Improvements, Waimanalo Beach Park to Makai Pier	Improve bike route on Kalaniana'ole Highway, from Huli Street to Makai Pier.	N	N	L	M	N	N	N	N/A	Y	Y	Y	Obj. 15	G101-3, G201-2, G301-2, G401	NEW project. Project was added because it was not obligated in FY10. \$2.65M for CON added. Total project cost is \$3.283M.
OS67.	Kamehameha Highway, Wetland Enhancement, Vicinity of Ukoa Pond	Enhance wetlands near Ukoa Pond as a mitigation for previous impacts and wetland banking for future use. This is a wetland mitigation project on the North Shore that is related to the construction of the Haleiwa Bypass Road.	N	Y	L	M	N	Y	N	N/A	Y	Y	Y	Obj. 14	G301	Defer and inflate CON from FY14 to \$6.24M in FY15 to financially constrain the STIP.
OS69.	Leeward Bikeway, Phase I, Waipio Point Access Road to Hawaii Railroad Society Train Station	Improve the bikeway/bike path from the Waipio Point Access Road to the northeast end of the existing West Loch Bikepath and from the southwest end of the existing West Loch bikepath to the Hawaii Railway Society Train Station.	Y	N/A	L	M	N	N	N	N/A	Y	Y	Y	Proj. 2	G101-4, G201-2, G301-2, G401	Added \$800K of ROW in FY12 since it was not obligated in FY10. Defer and increase CON in FY11 from \$4.16M to \$8.5M in FY12. This project is being deferred because ROW acquisition is not complete. ROW is needed from the US Navy and a number of utility agreements are pending AG review

DEPARTMENT OF TRANSPORTATION
STATEWIDE TRANSPORTATION IMPROVEMENT PROGRAM : FINANCIALLY CONSTRAINED
FFY 2011 THRU 2014 (FFY 2015-2016 Informative Only)

Click here to access the FFY 11-14(+2) STIP document: <http://hawaii.gov/dot/highways/STIP/110531%2011-14%20STIP%20Rev%20%232%20-2.pdf>

ENHANCEMENT PROJECTS		Project Description	Enhancement Program	Non-Enhancement Funding	Cost Participation	Project Stage	Gap Closure?	Mandated?	Transit Friendly?	Oahu Regional ITS Architecture Consistency	Addresses SAFETEA-LU Planning Factor(s)?	Local Match Available?	Ready-to-Go?	ORTP Consistency	HSTP Goals and Objectives Code	Revision #2
OS70.	Leeward Bikeway, Phase II, Hawaii Railroad Society Train Station to Lualualei Naval Road	Improve the bikeway/bike path from the Hawaii Railway Society Train Station to Lualualei Naval Road.	Y	N/A	L	M	N	N	N	N/A	Y	Y	Y	Proj. 2	G101-4, G201-2, G301-2, G401	Defer and inflate ROW in FY14 to FY15. Defer \$3.718M of CON in FY16 to out years. Deferrals are to financially constrain the STIP.
OS79.	Recreational Trails Program	A Federal-aid assistance program to help the State provide and maintain recreational trails for both motorized and non-motorized recreational use.	N	Y	L	M	N	N	N	N/A	Y	Y	Y	Obj.14	G101-4, G201-2, G301-2, G401, G501	
CITY & COUNTY OF HONOLULU - FHWA																
OC3.	Bicycle Projects	This is an ongoing island wide program for the implementation of the Oahu Bicycle Master Plan improvements, the development of new projects and the upgrade of existing bicycle facilities.	N	Y	L	L	Y	N	N	N/A	Y	Y	Y	Obj.15	G101-4, G201-2, G301-2, G401, G501	Location descriptions cost estimates and schedules have been updated.

**DEPARTMENT OF TRANSPORTATION
STATEWIDE TRANSPORTATION IMPROVEMENT PROGRAM : FINANCIALLY CONSTRAINED
FFY 2011 THRU 2014 (FFY 2015-2016 Informative Only)**

Click here to access the FFY 11-14(+2) STIP document: <http://hawaii.gov/dot/highways/STIP/110531%2011-14%20STIP%20Rev%20%232%20-2.pdf>

HUMAN SERVICES TRANSPORTATION PROGRAMS		Project Description	Human Services Transportation Plan	Cost Participation	Project Stage	Mandated?	Transit Friendly?	Oahu Regional ITS Architecture Consistency	Addresses SAFETEA-LU Planning Factor(s)?	Local Match Available?	Ready-to-Go?	ORTP Consistency	HSTP Goals and Objectives Code	Revision #2
OAHU : STATE - FHWA														
OS85.	JARC (Small Urban)	Job Access & Reverse Commute Program (Section 5316). The JARC formula grant program aims to improve access to transportation services to employment & employment related activities for welfare recipients& eligible low-income individuals & to transport residents of urbanized areas & nonurbanized areas to suburban employment opportunities. Funds from the JARC program are available for capital, planning, and operating expenses that support the development and maintenance of transportation services designed to transport low-income individuals to & from jobs and activities related to their employment & to support reverse commute projects.	Y	L	H	N	N	N/A	Y	Y	Y	Obj. #5	G1O3, G3O2, G4O1, G5O1,2	NEW project.
OS86.	New Freedom (Small Urban)	New Freedom Program (Section 5317). The New Freedom formula grant program aims to provide additional tools to overcome existing barriers facing Americans with disabilities seeking integration into the work force and full participation in society. New Freedom program funds are available for capital and operating expenses that support new public transportation services beyond those required by the ADA and new public transportation alternatives beyond those required by the ADA designed to assist individuals with disabilities with accessing transportation services.	Y	L	H	N	N	N/A	Y	y	Y	Obj. #5	G1O3, G3O2, G4O1, G5O1,2	NEW project.
CITY & COUNTY OF HONOLULU - FTA														

**DEPARTMENT OF TRANSPORTATION
STATEWIDE TRANSPORTATION IMPROVEMENT PROGRAM : FINANCIALLY CONSTRAINED
FFY 2011 THRU 2014 (FFY 2015-2016 Informative Only)**

Click here to access the FFY 11-14(+2) STIP document: <http://hawaii.gov/dot/highways/STIP/110531%2011-14%20STIP%20Rev%20%232%20-2.pdf>

OC13.	Agency-Provided Trips	To operate transportation services that would help reduce the number of trips on The Handi-Van and lower operating costs while improving service.	H	L	L	N	N	N/A	Y	Y	Y	Obj.5	G101-4, G201-2, G301-2, G402, G501, G503	
OC16.	Local Shuttle Service	To maintain and expand shuttle services provided at Kalaeloa homeless shelter sites and the Campbell Industrial Park to address transportation needs of low income persons.	H	M	L	N	N	N/A	Y	Y	Y	Obj.5	G101-4, G201-2, G301-2, G402, G501, G503	
OC18.	Mobility Management Center	To coordinate transit and human service transportation to improve access to transportation for seniors, people with disabilities, and persons with low incomes.	H	L	L	N	N	N/A	Y	Y	Y	Obj.5	G101-4, G201-2, G301-2, G402, G501, G503	
OC24.	Special Needs Transportation	To maintain and expand shuttle services to meet transportation needs of frail seniors 60 years and over to include late afternoon, evening hours and weekend service.	H	L	L	N	N	N/A	Y	Y	Y	Obj.5	G101-4, G201-2, G301-2, G402, G501, G503	

**DEPARTMENT OF TRANSPORTATION
STATEWIDE TRANSPORTATION IMPROVEMENT PROGRAM : FINANCIALLY CONSTRAINED
FFY 2011 THRU 2014 (FFY 2015-2016 Informative Only)**

Click here to access the FFY 11-14(+2) STIP document: <http://hawaii.gov/dot/highways/STIP/110531%2011-14%20STIP%20Rev%20%232%20-2.pdf>

TRANSIT PROJECTS		Project Description	Maintains Existing System	Completes Multi-Phase Project	Enhances Hub-and-Spoke System	Enhances Safety and Security	New Transit Service	Local Match In Year 1 Budget	Local Match Probable In Years 2,3 or 4 Budget	Oahu Regional ITS Architecture Consistency	Addresses SAFETEA-LU Planning Factor(s)?	Local Match Available?	Ready-to-Go?	ORTP Consistency	HSTP Goals and Objectives Code	Revision #2
CITY & COUNTY OF HONOLULU - FHWA																
OC1.	Alapai Transit Center Multi-Use Path	Construct a multi-use path between Alapai Street and Kealamakai Street. This will serve as a connection of the multi-use path from Ewa of Alapai to Hotel Street and will provide a path for pedestrians and bicyclists.	N	Y	N	Y	N	Y	N	N/A	Y	Y	Y	Proj.1	G101-4, G201-2, G301-2, G401	Decrease estimate and defederalize.
CITY & COUNTY OF HONOLULU - FTA																
OC14.	Bus and Handi-Van Acquisition Program	Purchase replacement transit buses and handi-van vehicles at estimated vehicle cost.	Y	N/A	N/A	N	N	Y	N/A	N/A	Y	Y	Y	Obj.2	G101-4, G201-2, G301-2, G401, G501	
OC15.	Honolulu High-Capacity Transit Corridor Project	Design and construct a fixed guideway system between East Kapolei and Ala Moana Center. The system includes stations and related appurtenances, park-and-ride facilities, a maintenance and storage facility, light metro vehicles and associated core systems.	N/A	N	Y	Y	Y	Y	Y	Y	Y	Y	Y	Proj.31	G101-4, G201-2, G301-2, G401, G502	
OC17.	Middle Street Intermodal Center	Design, construct, inspect, and provide relocation funds for Phase II. Phase II is the completion of the Handi-Van parking lot, transit center platform and bus parking and parking garage.	Y	Y	N/A	N	N	Y	Y	N/A	Y	Y	Y	Proj.33	G101-4, G201-2, G301-2, G401, G501	
OC19.	Preventive Maintenance	Preventive maintenance of FTA-funded rolling stock (buses and handi-vans) to include parts, labor, and other related costs.	Y	N/A	N/A	N/A	N/A	Y	Y	Y	Y	Y	Y	Proj.34	G101-4, G201-2, G301-2, G401, G501	

**DEPARTMENT OF TRANSPORTATION
STATEWIDE TRANSPORTATION IMPROVEMENT PROGRAM : FINANCIALLY CONSTRAINED
FFY 2011 THRU 2014 (FFY 2015-2016 Informative Only)**

Click here to access the FFY 11-14(+2) STIP document: <http://hawaii.gov/dot/highways/STIP/110531%2011-14%20STIP%20Rev%20%232%20-2.pdf>

TRANSIT PROJECTS		Project Description	Maintains Existing System	Completes Multi-Phase Project	Enhances Hub-and Spoke System	Enhances Safety and Security	New Transit Service	Local Match In Year 1 Budget	Local Match Probable In Years 2,3 or 4 Budget	Oahu Regional ITS Architecture Consistency	Addresses SAFETEA-LU Planning Factor(s)?	Local Match Available?	Ready-to-Go?	ORTP Consistency	HSTP Goals and Objectives Code	Revision #2
OC21.	Transit Safety and Security Projects	Capital projects at various transit locations to improve safety and security.	Y	N	N/A	Y	N	Y	Y	Y	Y	Y	Y	Obj.6	G101-4, G201-2, G301-2, G401	
OC22.	West Oahu Bus and Handi-Van Maintenance Facility	Plan, design, and construct a maintenance facility for bus and handi-van operations in West Oahu.	Y	N	N	N	N	Y	N/A	N/A	Y	Y	Y	Proj.34	G101-4, G201-2, G301-2, G401, G501	
OC23.	Windward Transit Center	Plan, design, construct and inspect a transit center in Windward, Oahu.	N/A	N	Y	N	N	N/A	N/A	N/A	Y	N/A	Y	Proj.33	G101-4, G201-2, G301-2, G401	

DEPARTMENT OF TRANSPORTATION
STATEWIDE TRANSPORTATION IMPROVEMENT PROGRAM : FINANCIALLY CONSTRAINED
FFY 2011 THRU 2014 (FFY 2015-2016 Informative Only)

Click here to access the FFY 11-14(+2) STIP document: <http://hawaii.gov/dot/highways/STIP/110531%2011-14%20STIP%20Rev%20%232%20-2.pdf>

SYSTEM PRESERVATION PROJECTS		Project Description	Bridge Assessment and Replacement Programs Yes: Project identified through DOT's Bridge Replacement Program, Honolulu's Bridge Inspection & Appraisal process or other bridge programming system No: Project did not result from DOT's Bridge Replacement Program, Honolulu's Bridge Inspection & Appraisal process or other bridge programming system	Pavement Management Programs Yes: Project identified through DOT's Pavement Management System, Honolulu's Roadway Pavement Condition Survey or other pavement evaluation system No: Project did not result from DOT's Pavement Management System, Honolulu's Roadway Pavement Condition Survey or other pavement evaluation system	Cost Participation High: Private industry funding has been secured Med: Private industry funding is anticipated Low: Does not include other financial involvement (i.e. private industry)	Project Stage High: Planning or Design has already been completed Med: Planning or Design is almost complete Low: The project has not yet begun	Gap Closure? Does this project close a gap or connect missing links in a route?	Mandated? Required by federal, state, or municipal laws, regulations or codes?	Addresses at least one SAFETEA-LU Planning Factor?	Listed in Regional Transportation Plans	HSTP Goals and Objectives Code	Revision #2
	HAWAII : STATE - FHWA											
HS3.	Crater Rim Road (NPS)	Rehabilitation and resurfacing of the westerly 5-miles of Crater Rim Road. It will also include rehabilitation or expansion of a number of parking areas within the park.	N	N	L	M	N	N	Y	N	G101-2, G201-2, G301, G401, G502	
HS5.	Hawaii Belt Road (Route 19), Bridge Repair and Painting, Umauma Bridge	Rehabilitate existing bridge.	Y	N	L	M	N	N	Y	N	G101-2, G201-2, G301-2, G401	Defer and increase CON from \$16.6M in FY11 to \$35M in FY12. Increase in cost due to significant bridge improvements to lessen future maintenance cost and for rockfall mitigation. Delete advance construction reimbursement in FY12-13 to financially constrain the STIP.
HS6.	Hawaii Belt Road (Route 19), Bridge Replacement, Pahoehoe Stream Bridge	Rehabilitate existing bridge.	Y	N	L	L	N	N	Y	N	G101-2, G201-2, G301-2, G401	Defer \$10.3M of CON from FY15 to out years and delete advance construction reimbursement in FY16 to financially constrain the STIP.
HS16.	Hilo Bayfront Highway (Route 19), Shoreline Protection	Construct groin fields in phases along Hilo Bayfront.	N	N	L	M	N	N	Y	N	G101-2, G201-2, G301	Defer and inflate CON from FY14 to FY15 and delete advance construction reimbursement in FY15 to financially constrain the STIP.
HS19.	Kawaihae Road (Route 19), Waiaka Stream Bridge Replacement and Realignment of Approaches	Replacing the existing Waiaka Stream Bridge, realigning the bridge approaches, reconstructing the Route 19/Route 250 intersection and installing safety improvements.	Y	N	L	L	N	N	Y	N	G101-4, G201-2, G301-2, G401, G502	Defer and inflate \$1.1M in DES from FY11 to \$1.144M in FY12. Defer and inflate in FY13 to \$2.08M in FY14. Defer and inflate CON in FY14 to \$10.4M in FY15. Deferrals due to delay in project schedule. Delete advance construction reimbursement in FY15 fo financially constrain the STIP.

DEPARTMENT OF TRANSPORTATION
STATEWIDE TRANSPORTATION IMPROVEMENT PROGRAM : FINANCIALLY CONSTRAINED
FFY 2011 THRU 2014 (FFY 2015-2016 Informative Only)

Click here to access the FFY 11-14(+2) STIP document: <http://hawaii.gov/dot/highways/STIP/110531%2011-14%20STIP%20Rev%20%232%20-2.pdf>

SYSTEM PRESERVATION PROJECTS		Project Description	Bridge Assessment and Replacement Programs Yes: Project Identified through DOT's Bridge Replacement Program, Honolulu's Bridge Inspection & Appraisal process or other bridge programming system No: Project did not result from DOT's Bridge Replacement Program, Honolulu's Bridge Inspection & Appraisal process or other bridge programming system	Pavement Management Programs Yes: Project Identified through DOT's Pavement Management System, Honolulu's Roadway Pavement Condition Survey or other pavement evaluation system No: Project did not result from DOT's Pavement Management System, Honolulu's Roadway Pavement Condition Survey or other pavement evaluation system	Cost Participation High: Private industry funding has been secured Med: Private industry funding is anticipated Low: Does not include other financial involvement (i.e., private industry)	Project Stage High: Planning or Design has already been completed Med: Planning or Design is almost complete Low: The project has not yet begun	Gap Closure? Does this project close a gap or connect missing links in a route?	Mandated? Required by federal, state, or municipal laws, regulations or codes?	Addresses at least one SAFETEA-LU Planning Factor?	Listed in Regional Transportation Plans	HSTP Goals and Objectives Code	Revision #2
Projects that upgrade and protect infrastructure investments, such as: - pavement resurfacing projects - bridge projects - drainage projects - street light pole replacement projects - traffic sign projects - roadway upgrade projects (no additional capacity) - Intelligent Transportation System (ITS)												
HS29.	Mamalahoa Highway (Route 11), Hilea Bridge Replacement	Replace existing bridge.	Y	N	L	L	N	N	Y	N	G101-2, G201-2, G301-2, G401	Defer and inflate DES in FY14 to \$810K in FY15. Defer \$420K of ROW from FY16 to out years. Deferrals are to financially constrain the STIP.
	COUNTY OF HAWAII - FHWA											
HC1.	Alii Drive (Route 186) Culvert Replacement	Replacement of an existing culvert with a new bridge and transitional structures at Alii Drive.	Y	N	L	L	N	N	Y	N	G101-2, G201-2, G301-2, G401	Defer and inflate CON in FY12 to \$10.4M in FY13 to financially constrain the STIP.
HC5.	Bridge Inspection and Appraisal	Inspection of county-maintained bridges as required by FHWA.	N	N	L	M	N	Y	Y	N	G101-2, G201-2	
HC6.	Kaahakini Bridge Rehabilitation	Replacement of an existing bridge including transitional structures.	Y	N	L	M	N	N	Y	N	G101-2, G201-2, G301-2, G401	Defer and inflate CON in FY11 to \$2.08M in FY12 due to ongoing consultant contract work.
HC7.	Kaiminani (Route 198) Resurfacing Roadway Improvements (Mamalahoa Highway (Rte 190) to Queen Kaahumanu Highway (Rte19)) to Vicinity of Ahihi Street	Scope of work includes roadway reconstruction, shoulder and drainage improvements, utility relocation, retaining wall construction, driveway/property tie-ins, roadway signing and striping and other related improvements	N	Y	L	L	N	N	Y	N	G101-2, G201-2, G301, G401	Changed project title from resurfacing to roadwork improvements. Also reduced project limits to end at Ahihi St instead of Queen Kaahumanu Hwy and updated scope of work. Increased CON estimate in FY11 from \$6M to \$8.5M. Updated total project cost is \$8.5M from \$9.4M.
HC8.	Kamehameha Avenue (Route 1910) Resurfacing, Wailoa Bridge to Ponahawai Street	Resurfacing approx. 0.75 miles of Kamehameha Ave. from the end of State Hwy at Wailoa Bridge to Ponahawai St. Work to include road bed reconstruction, sidewalk/driveway repairs, drainage, sidewalk and ADA improvements.	Y	N	L	L	N	N	Y	N	G101-2, G201-2, G301, G401	\$10K of DES in FY11 will be deleted since it has already been obligated in a previous FY. Defer and inflate CON in FY13 to \$9.62M in FY14 to financially constrain the STIP.

DEPARTMENT OF TRANSPORTATION
STATEWIDE TRANSPORTATION IMPROVEMENT PROGRAM : FINANCIALLY CONSTRAINED
FFY 2011 THRU 2014 (FFY 2015-2016 Informative Only)

Click here to access the FFY 11-14(+2) STIP document: <http://hawaii.gov/dot/highways/STIP/110531%2011-14%20STIP%20Rev%20%232%20-2.pdf>

SYSTEM PRESERVATION PROJECTS Projects that upgrade and protect infrastructure investments, such as: - pavement resurfacing projects - bridge projects - drainage projects - street light pole replacement projects - traffic sign projects - roadway upgrade projects (no additional capacity) - Intelligent Transportation System (ITS)		Project Description	Bridge Assessment and Replacement Programs Yes: Project identified through DOT's Bridge Replacement Program, Honolulu's Bridge Inspection & Appraisal process or other bridge programming system No: Project did not result from DOT's Bridge Replacement Program, Honolulu's Bridge Inspection & Appraisal process or other bridge programming system	Pavement Management Programs Yes: Project identified through DOT's Pavement Management System, Honolulu's Roadway Pavement Condition Survey or other pavement evaluation system No: Project did not result from DOT's Pavement Management System, Honolulu's Roadway Pavement Condition Survey or other pavement evaluation system	Cost Participation High: Private industry funding has been secured Med: Private industry funding is anticipated Low: Does not include other financial involvement (i.e. private industry)	Project Stage High: Planning or Design has already been completed Med: Planning or Design is almost complete Low: The project has not yet begun	Gap Closure? Does this project close a gap or connect missing links in a route?	Mandated? Required by federal, state, or municipal laws, regulations or codes?	Addresses at least one SAFETEA-LU Planning Factor?	Listed in Regional Transportation Plans	HSTP Goals and Objectives Code	Revision #2
HC15.	Manono Street (Route 2770) Roadway Improvements, Lanikaula Steet to Kekuanaoa Street	Reconstruction of Manono St. from Lanikaula St. to Kekuanaoa St. including constructing concrete curb, gutter, sidewalks, asphalt concrete paving, concrete CRM walls, drainage improvements, utility reloc., driveway tie-ins & other related improvements.	N	Y	L	L	N	N	Y	N	G101-2, G201-2, G301, G401	Added NEW project. This project is being added to utilize funds that were meant for other projects but are not ready to be spent. Added \$50K for DES in FY11 and \$500K for ROW in FY12. Total project cost is \$5.6M.
HC12.	Reed's Island Bridge Rehabilitation	Replacement of an existing bridge including transitional structures.	Y	N	L	M	N	N	Y	N	G101-2, G201-2, G301-2, G401	

DEPARTMENT OF TRANSPORTATION
STATEWIDE TRANSPORTATION IMPROVEMENT PROGRAM : FINANCIALLY CONSTRAINED
FFY 2011 THRU 2014 (FFY 2015-2016 Informative Only)

Click here to access the FFY 11-14(+2) STIP document: <http://hawaii.gov/dot/highways/STIP/110531%2011-14%20STIP%20Rev%20%232%20-2.pdf>

SAFETY PROJECTS		Project Description	Highway Safety Improvement Program Yes: Project identified through DOT's Highway Safety Improvement Program or County Safety Improvement Program No: Project did not result from DOT's Highway Safety Improvement Program or County Safety Improvement Program	Rockfall Protection Study Yes: Project identified through DOT's Rockfall Protection Study No: Project did not result from DOT's Rockfall Protection Study	Cost Participation High: Private industry funding has been secured Med: Private industry funding is anticipated Low: Does not include other financial involvement (i.e. private industry)	Project Stage High: Planning or Design has already been completed Med: Planning or Design is almost complete Low: The project has not yet begun	Gap Closure? Does this project close a gap or connect missing links in a route?	Mandated? Required by federal, state, or municipal laws, regulations or codes?	Addresses at least one SAFETEA-LU Planning Factor?	Listed in Regional Transportational Plans	HSTP Goals and Objectives Code	Revision #2
HAWAII : STATE - FHWA												
HS4.	Guardrail and Shoulder Improvements, Various Locations	Improve guardrail and shoulders.	N	N	L	L	N	N	Y	N	G101-3, G201-2, G301, G401	
HS40.	Hawaii Belt Road (Route 19), Drainage Improvements, Vicinity of Hakalau Bridge	Install a new culvert system along the mauka shoulder. Include rockfall protection on the cutslope including permanent mesh system on both sides of the roadway.	N	Y	L	M	N	N	Y	N	G101-3, G201-2, G301, G401	NEW project.
HS7.	Hawaii Belt Road (Route 19), Guardrail and Shoulder Improvements, Kaumoali Bridge Towards Waipunahina Bridge	Improve guardrail and shoulders along Hawaii Belt Road from Kaumoali Bridge towards Waipunahina Bridge.	N	N	L	M	N	N	Y	N	G101-3, G201-2, G301, G401	
HS8.	Hawaii Belt Road (Route 19), Guardrail and Shoulder Improvements, Kealakaha Bridge Towards Kaula Bridge	Improve guardrail and shoulders from Kealakaha Bridge to Kaula Bridge.	N	N	L	M	N	N	Y	N	G101-3, G201-2, G301, G401	
HS10.	Hawaii Belt Road (Route 19), Guardrail and Shoulder Improvements, Papalele Rd towards Kaumoali Bridge	Improve guardrail and shoulders along Hawaii Belt Road from Papalele Road towards Kaumoali Bridge.	N	N	L	M	N	N	Y	N	G101-3, G201-2, G301, G401	
HS11.	Hawaii Belt Road (Route 19), Guardrail and Shoulder Improvements, Kaala Bridge Towards Kealakaha Bridge	Improve guardrail and shoulders from Kaala Bridge to Kealakaha Bridge.	N	N	L	M	N	N	Y	N	G101-3, G201-2, G301, G401	Defer and inflate CON from FY15 to FY16 and delete advance construction reimbursement in FY16 to financially constrain the STIP.

DEPARTMENT OF TRANSPORTATION
STATEWIDE TRANSPORTATION IMPROVEMENT PROGRAM : FINANCIALLY CONSTRAINED
FFY 2011 THRU 2014 (FFY 2015-2016 Informative Only)

Click here to access the FFY 11-14(+2) STIP document: <http://hawaii.gov/dot/highways/STIP/110531%2011-14%20STIP%20Rev%20%232%20-2.pdf>

SAFETY PROJECTS		Project Description	Highway Safety Improvement Program Yes: Project identified through DOT's Highway Safety Improvement Program or County Safety Improvement Program No: Project did not result from DOT's Highway Safety Improvement Program or County Safety Improvement Program	Rockfall Protection Study Yes: Project identified through DOT's Rockfall Protection Study No: Project did not result from DOT's Rockfall Protection Study	Cost Participation High: Private industry funding has been secured Med: Private industry funding is anticipated Low: Does not include other financial involvement (i.e. private industry)	Project Stage High: Planning or Design has already been completed Med: Planning or Design is almost complete Low: The project has not yet begun	Gap Closure? Does this project close a gap or connect missing links in a route?	Mandated? Required by federal, state, or municipal laws, regulations or codes?	Addresses at least one SAFETEA-LU Planning Factor?	Listed in Regional Transportational Plans	HSTP Goals and Objectives Code	Revision #2
HS12.	Hawaii Belt Road (Route 19), Guardrail and Shoulder Improvements, Waipunahina Bridge to East Paauilo Bridge	Improve guardrail and shoulders from Waipunahina Bridge to E. Paauilo Bridge.	N	N	L	L	N	N	Y	N	G101-3, G201-2, G301, G401	Defer and inflate CON from FY14 to FY15 and delete advance construction reimbursement in FY15 to financially constrain the STIP.
HS13.	Hawaii Belt Road (Route 19), Rockfall Protection at Various Sections, Phase I (Laupahoehoe Gulch)	Slope protection along Route 19, Hawaii Belt Road, in the vicinity of Laupahoehoe Gulch.	N	Y	L	M	N	N	Y	N	G101-3, G201-2, G301, G401	Defer CON from FY11 to FY13 and delete advance construction reimbursement in FY12-13 due to delays in project schedule.
HS14.	Hawaii Belt Road (Route 19), Rockfall Protection at Various Sections, Phase II (Maulua Gulch)	Slope protection along Route 19, Hawaii Belt Road, in the vicinity of Maulua Gulch.	N	Y	L	L	N	N	Y	N	G101-3, G201-2, G301, G401	
HS38.	Hawaii Belt Road (Route 130) Safety Improvements at Kaawalii Gulch	Installation of milled rumble strips on centerline and shoulders, pavement markings, striping and signage.	Y	N	L	H	N	N	Y	N	G101-3, G201-2, G301, G401	
HS39.	Keaau-Pahoa Road (Route 130) Intersection Improvements at Old Government Road	Intersection improvements will be identified and considered by conducting a traffic signal warrant and consulting the HDOT Modern Roundabout Policy Guideline.	Y	N	L	M	N	N	Y	N	G101-3, G201-2, G301, G401	
HS22.	Keaau-Pahoa Road (Route 130), Intersection Improvements at Paradise Drive, Orchidland Drive, and Ainaloa Blvd	Implement safety improvements at listed intersections.	Y	N	L	M	N	N	Y	N	G101-3, G201-2, G301, G401	
HS30.	Mamalahoa Highway (Route 11) Drainage Improvements at Kawa	Drainage improvements, including the installation of box culverts and raising of the roadway.	N	N	L	M	N	N	Y	N	G101-3, G201-2, G301, G401	Defer and inflate CON in FY11 to \$5.841M in FY13. ROW acquisition will be a very lengthy process.

DEPARTMENT OF TRANSPORTATION
STATEWIDE TRANSPORTATION IMPROVEMENT PROGRAM : FINANCIALLY CONSTRAINED
FFY 2011 THRU 2014 (FFY 2015-2016 Informative Only)

Click here to access the FFY 11-14(+2) STIP document: <http://hawaii.gov/dot/highways/STIP/110531%2011-14%20STIP%20Rev%20%232%20-2.pdf>

CONGESTION MITIGATION PROJECTS		Project Description	Congestion Management System Yes: Project identified through a Congestion Management System process No: Project did not result from a Congestion Management System process	Highway Safety Improvement Program Yes: Project identified through DOT's Highway Safety Improvement Program or County Safety Improvement Program No: Project did not result from DOT's Highway Safety Improvement Program or County Safety Improvement Program	Cost Participation High: Private industry funding has been secured Med: Private industry funding is anticipated Low: Does not include other financial involvement (i.e. private industry)	Project Stage High: Planning or Design has already been completed Med: Planning or Design is almost complete Low: The project has not yet begun	Traffic Signal Warrants Traffic signal project meets the criteria in the Traffic Signal Warrants	Gap Closure? Does this project close a gap or connect missing links in a route?	Mandated? Required by federal, state, or municipal laws, regulations or codes?	Addresses at least one SAFETEA-LU Planning Factor?	Listed in Regional Transportation Plans	HSTP Goals and Objectives Code	Revision #2
	HAWAII : STATE - FHWA												
HS34.	Queen Kaahumanu Highway (Route 19), Intersection Improvements at Kawaihae Road (Route 19)	Improve operation, capacity and safety of Queen Kaahumanu Hwy and Kawaihae Road intersection.	N	Y	L	H	N	N	N	Y	N	G101-4, G201-2, G302, G401, G502	
	COUNTY OF HAWAII - FHWA												
HC9.	Kawailani (Rte 2760)/Pohakulani/Ainaola (Rte 2750) & Kawailani (Rte 2760)/Iwalani (Rte 2770) Intersection Improvements, Phase 2	Installation of synchronized traffic signals at the Kawailani/Iwalani and Kawailani/Pohakulani intersections; including land acquisition, realignment of Ainaola Drive, channelization, utility relocation and construction of curbs, gutters, sidewalks and related drainage improvements.	N	N	L	M	Y	N	N	Y	N	G101-4, G201-2, G302, G401, G502	Defer and inflate CON in FY14 to \$17.47M in FY15 to financially constrain the STIP.

DEPARTMENT OF TRANSPORTATION
STATEWIDE TRANSPORTATION IMPROVEMENT PROGRAM : FINANCIALLY CONSTRAINED
FFY 2011 THRU 2014 (FFY 2015-2016 Informative Only)

Click here to access the FFY 11-14(+2) STIP document: <http://hawaii.gov/dot/highways/STIP/110531%2011-14%20STIP%20Rev%20%232%20-2.pdf>

MODERNIZATION PROJECTS		Project Description	Congestion Management System Yes: Project identified through a Congestion Management System process No: Project did not result from a Congestion Management System process	Highway Safety Improvement Program Yes: Project identified through DOT's Highway Safety Improvement Program or County Safety Improvement Program No: Project did not result from DOT's Highway Safety Improvement Program or County Safety Improvement Program	Cost Participation High: Private industry funding has been secured Med: Private industry funding is anticipated Low: Does not include other financial involvement (i.e. private industry)	Project Stage High: Planning or Design has already been completed Med: Planning or Design is almost complete Low: The project has not yet begun	Traffic Signal Warrants Traffic signal project meets the criteria in the Traffic Signal Warrants	Gap Closure? Does this project close a gap or connect missing links in a route?	Mandated? Required by federal, state, or municipal laws, regulations or codes?	Addresses at least one SAFETEA-LU Planning Factor?	Listed in Regional Transportation Plans	HSTP Goals and Objectives Code	Revision #2
	HAWAII : STATE - FHWA												
HS1.	Akoni Pule Hwy (RTE 270) Realignment & Widening at Aamakao Gulch	Realign and widen roadway on the mauka side, improve shoulders and rock catchment area.	N	N	L	L	N	N	N	Y	N	G101-4, G201-2, G301-2, G401, G502	Defer and inflate CON from FY14 to FY15 and delete advance construction reimbursement in FY15 to financially constrain the STIP.
HS18.	Kawaihae Road Bypass, Waimea to Kawaihae, Phase 1 (First 5 miles)	Construction of a two-lane alternate route from Waimea to Kawaihae, connecting the proposed Waimea Bypass to Queen Kaahumanu Hwy to improve traffic flow and improve traffic circulation.	Y	N	L	L	N	Y	N	Y	Y	G101-4, G201-2, G301-2, G401, G502	
HS20.	Keaau-Pahoa Road (Route 130) Improvements, Keaau to Pahoa, Phase 1	Improve traffic capacity, circulation and safety along Route 130.	Y	N	L	L	N	N	N	Y	Y	G101-4, G201-2, G301-2, G401, G502	
HS41.	Keaau-Pahoa Road (Route 130) Shoulder Lane Conversion, Phases 1 & 2	Reconstructing and widening the existing shoulder and constructing new shoulders on the inbound side of the highway.	Y	Y	L	M	N	N	N	Y	N	G101-4, G201-2, G301-2, G401, G502	NEW project.
HS24.	Kealakehe Parkway Extension (Route 197), Keanalehu Drive to Kealakaa Street	Extension of Kealakehe Pkwy to match the existing section. Includes pavement markings, signs, drainage, guardrails and other miscellaneous work.	Y	N	L	L	N	Y	N	Y	Y	G101-4, G201-2, G301-2, G401, G502	Defer and inflate DES from FY13 to \$790K in FY14 to financially constrain the STIP.

DEPARTMENT OF TRANSPORTATION
STATEWIDE TRANSPORTATION IMPROVEMENT PROGRAM : FINANCIALLY CONSTRAINED
FFY 2011 THRU 2014 (FFY 2015-2016 Informative Only)

Click here to access the FFY 11-14(+2) STIP document: <http://hawaii.gov/dot/highways/STIP/110531%2011-14%20STIP%20Rev%20%232%20-2.pdf>

MODERNIZATION PROJECTS		Project Description	Congestion Management System Yes: Project identified through a Congestion Management System process No: Project did not result from a Congestion Management System process	Highway Safety Improvement Program Yes: Project identified through DOT's Highway Safety Improvement Program or County Safety Improvement Program No: Project did not result from DOT's Highway Safety Improvement Program or County Safety Improvement Program	Cost Participation High: Private industry funding has been secured Med: Private industry funding is anticipated Low: Does not include other financial involvement (i.e. private industry)	Project Stage High: Planning or Design has already been completed Med: Planning or Design is almost complete Low: The project has not yet begun	Traffic Signal Warrants Traffic signal project meets the criteria in the Traffic Signal Warrants	Gap Closure? Does this project close a gap or connect missing links in a route?	Mandated? Required by federal, state, or municipal laws, regulations or codes?	Addresses at least one SAFETEA-LU Planning Factor?	Listed in Regional Transportational Plans	HSTP Goals and Objectives Code	Revision #2
HS26.	Kuakini Highway (Route 11) Widening, Henry Street (Rte 1830) to Kamehameha III Road (Rte 185), Phase 1	Widen Kuakini Highway from two to four lanes with culverts, traffic signals and utilities. Improve shoulders to accommodate pedestrian and bicycle traffic.	Y	N	L	L	Y	N	N	Y	Y	G101-4, G201-2, G301-2, G401, G502	Defer \$1.56M of DES in FY16 to out years to financially constrain the STIP. This project will be deleted.
HS28.	Kumau Street Improvements, Hilo (Harbors Division)	Construction of a new entrance to Hilo Harbor and the expanded barge terminal area. Roadway connector link improvements (paving, utilities, lighting, roadway and sidewalk improvements) and intersection improvements with Kalaniana'ole Ave.	N	N	L	L	N	Y	N	Y	N	G101-4, G201-2, G301-2, G401	Defer and inflate CON in FY14 to \$2.7M in FY16. Delete advance construction reimbursement in FY15 to financially constrain the STIP.
HS32.	Puainako St (Rte 2000) Widening and Realignment, Kanoehelua Ave (Rte 11) to Komohana St (Rte 1940), Phase I - Komohana to Kawili (Rte 2770)	Widen and realign Puainako Street from 2 to 4 lanes. Improvements also include installing traffic signals, signs, pavement markings, hwy lighting, guardrails, and sidewalks.	Y	N	L	L	Y	Y	N	Y	Y	G101-4, G201-2, G301-2, G401, G502	Added "and Realignment" in the project title.
HS33.	Puainako St (Rte 2000) Widening and Realignment, Kanoehelua Ave (Rte 11) to Komohana St (Rte 1940), Phase II - Kawili (Rte 2770) to Kilauea (Rte 1920) Kanoehelua Ave (Rte 11)	Widen and realign Puainako Street from 2 to 4 lanes. Improvements also include installing traffic signals, signs, pavement markings, hwy lighting, guardrails, and sidewalks.	Y	N	L	L	Y	Y	N	Y	Y	G101-4, G201-2, G301-2, G401, G502	Added "and Realignment" in the project title. Changed project limits to end at Kanoehelua Ave instead of Kilauea.
HS35.	Queen Kaahumanu Highway (Route 19) Widening Keahole Airport to Kawaihae Harbor	Conduct planning and environmental study to assess alternatives and impacts to widening Queen Kaahumanu Highway from 2 to 4 lanes from Keahole Airport to Kawaihae Harbor.	Y	N	L	L	N	N	N	Y	Y	G101-4, G201-2, G301-2, G401, G502	Defer and inflate PLN in FY13 to \$4.87M in FY16 to financially constrain the STIP.

DEPARTMENT OF TRANSPORTATION
STATEWIDE TRANSPORTATION IMPROVEMENT PROGRAM : FINANCIALLY CONSTRAINED
FFY 2011 THRU 2014 (FFY 2015-2016 Informative Only)

Click here to access the FFY 11-14(+2) STIP document: <http://hawaii.gov/dot/highways/STIP/110531%2011-14%20STIP%20Rev%20%232%20-2.pdf>

MODERNIZATION PROJECTS		Project Description	Congestion Management System Yes: Project identified through a Congestion Management System process No: Project did not result from a Congestion Management System process	Highway Safety Improvement Program Yes: Project identified through DOT's Highway Safety Improvement Program or County Safety Improvement Program No: Project did not result from DOT's Highway Safety Improvement Program or County Safety Improvement Program	Cost Participation High: Private industry funding has been secured Med: Private industry funding is anticipated Low: Does not include other financial involvement (i.e. private industry)	Project Stage High: Planning or Design has already been completed Med: Planning or Design is almost complete Low: The project has not yet begun	Traffic Signal Warrants Traffic signal project meets the criteria in the Traffic Signal Warrants	Gap Closure? Does this project close a gap or connect missing links in a route?	Mandated? Required by federal, state, or municipal laws, regulations or codes?	Addresses at least one SAFETEA-LU Planning Factor?	Listed in Regional Transportation Plans	HSTP Goals and Objectives Code	Revision #2
HS36.	Saddle Road Extension	New roadway and/or realignment and extending Saddle Road from the Kona terminus at Mamalahoa Highway to the Queen Kaahumanu Highway.	Y	N	L	L	N	Y	N	Y	Y	G101-4, G201-2, G301-2, G401, G502	Defer \$100K of PreROW in FY16 to out years to financially constrain the STIP.
HS37.	Saddle Road (Route 200) Improvements, Phase 2D: East Side Grade & Pave, MP 6 to 11; West Side, MP 42 to Mamalahoa Hwy	Widen and/or realign the existing two-lane highway.	Y	N	L	M	N	N	N	Y	Y	G101-4, G201-2, G301-2, G401, G502	Added ROW funds to West Side for 2011. Add STP FLEXIBLE funding to supplement.
COUNTY OF HAWAII - FHWA													
HC3.	Alii Highway (Route 1110), Kamehameha III Rd (Route 185) to Queen Kaahumanu Hwy (Route 19)	Ph I, Part 1 will remove vegetation from the entire 4.75-miles. Ph 1, Part 2, in FY 2013, will construct 2.5 miles of 24-ft wide road starting at Kam III Hwy and ending at the Lako St. Extension. Ph II will complete construction from Lako St to Queen K.	Y	N	L	M	N	N	N	Y	Y	G101-4, G201-2, G301-2, G401, G502	Add Planning (\$500K) and Design (\$500K) phases in FY11. Defer and inflate CON in FY11 to \$2.08M in FY12 due to ongoing re-design efforts.
HC10.	Kuakini Highway (Route 1100) Widening, Hualalai Road (Route 1880) to Alii Highway	Widen approx. 1.5 miles of Kuakini Hwy to increase capacity between Hualalai Road and the new Alii Highway.	Y	N	L	L	N	N	N	Y	Y	G101-4, G201-2, G301-2, G401, G502	\$50K of DES in FY11 will be deleted since it has already been obligated in a previous FY. Defer and inflate CON in FY13 to \$7.28M in FY14 to financially constrain the STIP.

DEPARTMENT OF TRANSPORTATION
STATEWIDE TRANSPORTATION IMPROVEMENT PROGRAM : FINANCIALLY CONSTRAINED
FFY 2011 THRU 2014 (FFY 2015-2016 Informative Only)

Click here to access the FFY 11-14(+2) STIP document: <http://hawaii.gov/dot/highways/STIP/110531%2011-14%20STIP%20Rev%20%232%20-2.pdf>

MODERNIZATION PROJECTS		Project Description	Congestion Management System Yes: Project identified through a Congestion Management System process No: Project did not result from a Congestion Management System process	Highway Safety Improvement Program Yes: Project identified through DOT's Highway Safety Improvement Program or County Safety Improvement Program No: Project did not result from DOT's Highway Safety Improvement Program or County Safety Improvement Program	Cost Participation High: Private industry funding has been secured Med: Private industry funding is anticipated Low: Does not include other financial involvement (i.e. private industry)	Project Stage High: Planning or Design has already been completed Med: Planning or Design is almost complete Low: The project has not yet begun	Traffic Signal Warrants Traffic signal project meets the criteria in the Traffic Signal Warrants	Gap Closure? Does this project close a gap or connect missing links in a route?	Mandated? Required by federal, state, or municipal laws, regulations or codes?	Addresses at least one SAFETEA-LU Planning Factor?	Listed in Regional Transportation Plans	HSTP Goals and Objectives Code	Revision #2
HC11.	Mamalahoa Highway (Route 19) Widening (Mudlane to North Hawaii Community Hospital)	Widen approximately 4.5-miles of Mamalahoa Highway from Mudlane to the north Hawaii Community Hospital to increase vehicular capacity and improve safety by adding turning lanes. Work includes drainage, shoulder and bike lane improvements.	Y	N	L	L	N	N	N	Y	N	G101-4, G201-2, G301-2, G401, G502	

DEPARTMENT OF TRANSPORTATION
STATEWIDE TRANSPORTATION IMPROVEMENT PROGRAM : FINANCIALLY CONSTRAINED
FFY 2011 THRU 2014 (FFY 2015-2016 Informative Only)

Click here to access the FFY 11-14(+2) STIP document: <http://hawaii.gov/dot/highways/STIP/110531%2011-14%20STIP%20Rev%20%232%20-2.pdf>

ENHANCEMENT PROJECTS Transportation enhancement projects, such as: - bikeway projects - landscaping projects - pedestrian facilities projects		Project Description	Hawaii Statewide Enhancement Program Is the project classified as "Potentially Fundable" for use of Transportation Enhancement funds by the Hawaii Procedures for TE Projects?	Cost Participation High: Private industry funding has been secured Med: Private industry funding is anticipated Low: Does not include other financial involvement (i.e. private industry)	Project Stage High: Planning or Design has already been completed Med: Planning or Design is almost complete Low: The project has not yet begun	Gap Closure? Does this project close a gap or connect missing links in a route?	Mandated? Required by federal, state, or municipal laws, regulations or codes?	Addresses at least one SAFETEA-LU Planning Factor?	Listed in Regional Transportational Plans	HSTP Goals and Objectives Code	Revision #2
HAWAII : STATE - FHWA											
HS2.	Akoni Pule Highway (Route 270), Bicycle Improvements, Mahukona Wharf Access Road to Hawi Road	Improve Akoni-Pule Highway bicycle routes, including signage, from Mahukona Wharf Access Road to Hawi Road.	N	L	L	N	N	Y	N	G101-4, G201-2, G301-2, G401-2, G502	Defer and inflate DES from FY13 to FY14 to financially constrain the STIP.
HS25.	Kuakini Highway (Route 11) Bicycle Improvements, King Kamehameha III Highway (Rte 185) to Mamalahoa Highway (Rte 11)	Improve bicycle routes along Kuakini Highway from King Kamehameha III Highway to Mamalahoa Highway. Clear shoulders, paint stripes, and add signage.	N	L	L	N	N	Y	N	G101-4, G201-2, G301-2, G401-2, G502	
HS31.	National Recreational Trails Program - Hawaii (DLNR)	A Federal-aid assistance program to help the State provide and maintain recreational trails for both motorized and non-motorized recreational use. Anticipated funding for Big Island program.	N	L	L	N	N	Y	N	G101-3, G201, G301-2, G401-2, G502	
COUNTY OF HAWAII - FHWA											
HC2.	Alii Drive (Route 186) Road Improvements Along Oneo Bay, From Hualalai Road (Route 1880) to Walua Road (Route 187), Phases 1 & 2	Provide bicycle, pedestrian, landscaping and scenic view improvements along Alii Drive from Hualalai Road to Walua Road by undergrounding existing overhead utilities.	Y	L	L	N	N	Y	N	G101-4, G201-2, G301-2, G401-2, G502	

DEPARTMENT OF TRANSPORTATION
STATEWIDE TRANSPORTATION IMPROVEMENT PROGRAM : FINANCIALLY CONSTRAINED
FFY 2011 THRU 2014 (FFY 2015-2016 Informative Only)

Click here to access the FFY 11-14(+2) STIP document: <http://hawaii.gov/dot/highways/STIP/110531%2011-14%20STIP%20Rev%20%232%20-2.pdf>

TRANSIT PROJECTS		Project Description	Maintains Existing System	Completes Multi-Phase Project	Enhances Hub-and-Spoke System	Enhances Safety and Security	New Transit Service	Local Match in Year 1 Budget	Local Match Possible in Years 2, 3 or 4 Budget	Addresses at least one SAFETEA-LU Planning Factor?	Listed in Regional Transportation Plans	HSTP Goals and Objectives Code	Revision #2
			Does it maintain and operate existing fixed route bus and complementary paratransit system?	Does it complete a multi-phase project that has started?	Does it enhance system performance through implementation of hub-and-spoke system?	Does it enhance safety/security of passengers and the system and enhances service quality level?							
	COUNTY OF HAWAII - FTA												
HC13.	Bus and Bus Facility	Purchase buses and operate bus transit facilities.	Y	Y	Y	Y	Y	Y	Y	Y	N	G101-3, G201-2, G301-2, G401	
HC14.	Rural Transportation Program	Operate public transit system.	Y	Y	Y	Y	Y	Y	Y	Y	N	G101-3, G201-2, G301-2, G401	
HC16.	State of Good Repair	<p>Purchase buses and construct a one stop transit facility.</p> <p>The U.S. Department of Transportation's (DOT) Federal Transit Administration (FTA) provides discretionary funding for projects through Section 5309 Bus and Bus Facilities these program funds are in support of the State of Good Repair (SGR) Initiative. The SGR Initiative makes funds available to public transit providers to finance capital projects to replace, rehabilitate, and purchase buses and related equipment and to construct bus-related facilities, including programs of bus and bus-related projects for assistance to subrecipients that are public agencies, private companies engaged in public transportation, or private non-profit organizations. Additionally, the SGR Initiative makes funds available for Transit Asset Management systems, which is a systematic process of operating, maintaining, improving, and expanding physical assets effectively throughout their life cycles.</p>	Y	N	Y	Y	Y	Y	N	Y	N	G101-3, G201-2, G301-2, G401	NEW project.

DEPARTMENT OF TRANSPORTATION
STATEWIDE TRANSPORTATION IMPROVEMENT PROGRAM : FINANCIALLY CONSTRAINED
FFY 2011 THRU 2014 (FFY 2015-2016 Informative Only)

Click here to access the FFY 11-14(+2) STIP document: <http://hawaii.gov/dot/highways/STIP/110531%2011-14%20STIP%20Rev%20%232%20-2.pdf>

SYSTEM PRESERVATION PROJECTS		Project Description	Bridge Assessment and Replacement Programs Yes: Project identified through DOT's Bridge Replacement Program, Honolulu's Bridge Inspection & Appraisal process or other bridge programming system No: Project did not result from DOT's Bridge Replacement Program, Honolulu's Bridge Inspection & Appraisal process or other bridge programming system	Pavement Management Programs Yes: Project identified through DOT's Pavement Management System, Honolulu's Roadway Pavement Condition Survey or other pavement evaluation system No: Project did not result from DOT's Pavement Management System, Honolulu's Roadway Pavement Condition Survey or other pavement evaluation system	Cost Participation High: Private industry funding has been secured Med: Private industry funding is anticipated Low: Does not include other financial involvement (i.e. private industry)	Project Stage High: Planning or Design has already been completed Med: Planning or Design is almost complete Low: The project has not yet begun	Gap Closure? Does this project close a gap or connect missing links in a route?	Mandated? Required by federal, state, or municipal laws, regulations or codes?	Addresses at least one SAFETEA-LU Planning Factor?	Listed in Regional Transportation Plans	HSTP Goals and Objectives Code	Revision #2
Projects that upgrade and protect infrastructure investments, such as: - pavement resurfacing projects - bridge projects - drainage projects - street light pole replacement projects - traffic sign projects - roadway upgrade projects (no additional capacity) - Intelligent Transportation System (ITS)												
MAUI : STATE - FHWA												
MS5.	Honoapiilani Highway (Route 30), Bridge Replacement, Honolua Bridge	Replacement of a concrete T-beam bridge on Honoapiilani Hwy in the vicinity of Honolua Bay.	Y	N	L	M	N	N	Y	N	G101-2, G201-2, G301-2, G401	Defer and inflate \$747K of ROW in FY11 to \$777K in FY12 since environmental process is still on going. Defer and inflate CON in FY14 to \$5.4M in FY16 to financially constrain the STIP. Delete advance construction reimbursement in FY15.
MS31.	Honoapiilani Highway (Route 30), Shoreline Improvements, Vicinity of Olowalu	Shoreline protection for approximately 1000 feet of Highway on the west side of Hekili Point.	N	N	L	M	N	N	Y	N	G101-2, G201-2, G301	Defer and inflate CON in FY11 to \$2.163M in FY12 due to permitting delays.
MS34.	Honoapiilani Highway (Route 30), Shoreline Protectino at Launiupoko	Construct shoreline protection measures at Launiupoko to prevent erosion. Improvements will also include installation of guardrails, barriers, signage, and reconstruction/repaving of the roadway shoulders	N	N	L	M	N	N	Y	N	G101-2, G201-2, G301	NEW project.
MS12.	Kahului Beach Road (Route 3400), Shoreline Protection, Kahului Bay (#1)	Construct a seawall for about 800 feet of highway outside the harbor that would provide storm wave protection to the highway. Also construct low-profile concrete retaining wall at the waters edge to minimize accumulation of seaweed on the shoreline.	N	N	L	M	N	N	Y	N	G101-2, G201-2, G301	
MS15.	North Kihei Road (Route 310), Shoreline Protection, Vicinity of Kealia Pond (#6)	Beach fill with an elevated dune to minimize wave overwash during seasonal high surf.	N	N	L	L	N	N	Y	N	G101-2, G201-2, G301	Defer and inflate CON in FY13 to \$5.7M in FY15 to financially constrain the STIP. Delete advance construction reimbursement in FY14-15.
MS19.	Waiehu Beach Road (Route 3400), Bridge Rehabilitation, Iao Stream Bridge	Rehabilitation of a concrete tee-beam bridge on Waiehu Beach Road in the vicinity of Wailuku.	Y	N	L	M	N	N	Y	N	G101-2, G201-2, G301-2, G401	Defer and inflate CON in FY11 to \$6.76M in FY12. Still working on design and permits.
MOLOKAI												

DEPARTMENT OF TRANSPORTATION
STATEWIDE TRANSPORTATION IMPROVEMENT PROGRAM : FINANCIALLY CONSTRAINED
FFY 2011 THRU 2014 (FFY 2015-2016 Informative Only)

Click here to access the FFY 11-14(+2) STIP document: <http://hawaii.gov/dot/highways/STIP/110531%2011-14%20STIP%20Rev%20%232%20-2.pdf>

SYSTEM PRESERVATION PROJECTS		Project Description	Bridge Assessment and Replacement Programs Yes: Project identified through DOT's Bridge Replacement Program, Honolulu's Bridge Inspection & Appraisal process or other bridge programming system No: Project did not result from DOT's Bridge Replacement Program, Honolulu's Bridge Inspection & Appraisal process or other bridge programming system	Pavement Management Programs Yes: Project identified through DOT's Pavement Management System, Honolulu's Roadway Pavement Condition Survey or other pavement evaluation system No: Project did not result from DOT's Pavement Management System, Honolulu's Roadway Pavement Condition Survey or other pavement evaluation system	Cost Participation High: Private industry funding has been secured Med: Private industry funding is anticipated Low: Does not include other financial involvement (i.e. private industry)	Project Stage High: Planning or Design has already been completed Med: Planning or Design is almost complete Low: The project has not yet begun	Gap Closure? Does this project close a gap or connect missing links in a route?	Mandated? Required by federal, state, or municipal laws, regulations or codes?	Addresses at least one SAFETEA-LU Planning Factor?	Listed in Regional Transportation Plans	HSTP Goals and Objectives Code	Revision #2
Projects that upgrade and protect infrastructure investments, such as: - pavement resurfacing projects - bridge projects - drainage projects - street light pole replacement projects - traffic sign projects - roadway upgrade projects (no additional capacity) - Intelligent Transportation System (ITS)												
MS21.	Kamehameha V Highway (Route 450), Bridge Rehabilitation, Kaimiloloa Stream Bridge	Rehabilitation of the existing bridge to meet current bridge standards.	Y	N	L	L	N	N	Y	N	G101-2, G201-2, G301-2, G401	Defer \$865K of DES in FY16 to out years to financially constrain the STIP.
MS22.	Kamehameha V Highway (Route 450), Bridge Replacement, Makakupaia Stream Bridge	Kamehameha V Highway (Route 450) Puuloa Interchange Ramp "A" Seismic Rehabilitation. Milepost 3.94, Rehabilitate existing 43-foot long bridge by widening and strengthening to meet current State standards.	Y	N	L	L	N	N	Y	N	G101-2, G201-2, G301-2, G401	Defer and inflate CON in FY12 to \$4.293M in FY15 since consultant procurement is expected to take at least one year and this bridge is not a priority compared to other bridges.
MS23.	Kamehameha V Highway (Route 450), Shoreline Protection, Vicinity of Niaupala Fishpond	Construct a revetment for the reconstruction and protection of the highway shoulder.	N	N	L	L	N	N	Y	N	G101-2, G201-2, G301	
COUNTY OF MAUI - FHWA												
MC3.	Bridge Inspection and Appraisal	Inspection of county-maintained bridges as required by FHWA.	Y	N	L	M	N	Y	Y	N	G101-2, G201-2	
MC4.	Haliimaile Road (Route 371) Resurfacing & Safety Improvements, Haleakala Highway to Baldwin Avenue	Resurface approximately 3 miles of Maliimaile Road. Safety improvements could include milled centerline and rumble strips.	N	Y	L	H	N	N	Y	N	G101, G102	Updated project title to include "safety improvements". Added \$5K of safety component to FY11 using HSIP-HRRR funds. Updated project description and updated total project cost is \$3M.
MC5.	Hansen Road Pavement Reconstruction, Hana Highway to Puunene Avenue	Reconstruct pavement on Hansen Road from Puunene Ave to Hana Highway. Improvements to include pavement striping and marking, signage and safety improvements. Approximately 2 miles.	N	Y	L	L	N	N	Y	N	G101-2, G201-2, G301, G401	
MC6.	Hina Avenue (Route 3930) Pavement Reconstruction, Wakea Avenue to Ani Street	Reconstruct pavement on Hina Avenue from Wakea Avenue to Ani Street. Approximately 1.02 miles.	N	Y	L	L	N	N	Y	N	G101-2, G201-2, G301, G401	

DEPARTMENT OF TRANSPORTATION
STATEWIDE TRANSPORTATION IMPROVEMENT PROGRAM : FINANCIALLY CONSTRAINED
FFY 2011 THRU 2014 (FFY 2015-2016 Informative Only)

Click here to access the FFY 11-14(+2) STIP document: <http://hawaii.gov/dot/highways/STIP/110531%2011-14%20STIP%20Rev%20%232%20-2.pdf>

SYSTEM PRESERVATION PROJECTS		Project Description	Bridge Assessment and Replacement Programs Yes: Project identified through DOT's Bridge Replacement Program, Honolulu's Bridge Inspection & Appraisal process or other bridge programming system No: Project did not result from DOT's Bridge Replacement Program, Honolulu's Bridge Inspection & Appraisal process or other bridge programming system	Pavement Management Programs Yes: Project identified through DOT's Pavement Management System, Honolulu's Roadway Pavement Condition Survey or other pavement evaluation system No: Project did not result from DOT's Pavement Management System, Honolulu's Roadway Pavement Condition Survey or other pavement evaluation system	Cost Participation High: Private industry funding has been secured Med: Private industry funding is anticipated Low: Does not include other financial involvement (i.e., private industry)	Project Stage High: Planning or Design has already been completed Med: Planning or Design is almost complete Low: The project has not yet begun	Gap Closure? Does this project close a gap or connect missing links in a route?	Mandated? Required by federal, state, or municipal laws, regulations or codes?	Addresses at least one SAFETEA-LU Planning Factor?	Listed in Regional Transportation Plans	HSTP Goals and Objectives Code	Revision #2
Projects that upgrade and protect infrastructure investments, such as: - pavement resurfacing projects - bridge projects - drainage projects - street light pole replacement projects - traffic sign projects - roadway upgrade projects (no additional capacity) - Intelligent Transportation System (ITS)												
MC7.	Kahawaiokapia Bridge Replacement (Hana Highway - Route 360)	Replace or repair existing concrete bridge. Construct roadway improvements at both approaches.	Y	N	L	M	N	N	Y	N	G101-2, G201-2, G301-2, G401	
MC8.	Kahekili Highway (Route 3405) Resurfacing, Mokuhau Road North Market Street to Waiehu Beach Road	Resurface Kahekili Highway from N. Market Street to Waiehu Beach Road. Approximately 1.71 miles.	N	Y	L	H	N	N	Y	N	G101-2, G201-2, G301, G401	Revised project limits from Mokuhau Rd to North Market Street
MC38.	Kaholopoo Bridge Replacement (Route 360)	Replace or repair existing concrete bridge. Construct roadway improvements at both approaches.	Y	N	L	M	N	N	Y	N	G101-2, G201-2, G301-2, G401	
MC9.	Kamehameha Avenue (Route 3940) Pavement Reconstruction, Vicinity of Puunene Avenue to Hina Avenue	Reconstruct pavement on Kamehameha Avenue from Puunene Ave. to Hina Ave. Improvements to include pavement striping and marking, signage and safety improvements. Approximately 0.76 miles.	N	Y	L	L	N	N	Y	N	G101-2, G201-2, G301, G401	
MC11.	Kaupakalua Road (Route 365) Resurfacing, Hana Highway to Makawao Avenue	Resurface Kaupakalua Road from Hana Highway to Makawao Ave. Approximately 6.4 miles.	N	Y	L	M	N	N	Y	N	G101-2, G201-2, G301, G401	
MC13.	Koukouai Bridge Modifications (Hana Highway - Route 360)	Replace or repair existing concrete bridge. Construct roadway improvements at both approaches.	Y	N	L	L	N	N	Y	N	G101-2, G201-2, G301-2, G401	
MC14.	Kulanihakoi Bridge Replacement (South Kihei Road - Route 3100)	Replace or repair existing concrete bridge. Construct roadway improvements at both approaches.	Y	N	L	L	N	N	Y	N	G101-2, G201-2, G301-2, G401	

DEPARTMENT OF TRANSPORTATION
STATEWIDE TRANSPORTATION IMPROVEMENT PROGRAM : FINANCIALLY CONSTRAINED
FFY 2011 THRU 2014 (FFY 2015-2016 Informative Only)

Click here to access the FFY 11-14(+2) STIP document: <http://hawaii.gov/dot/highways/STIP/110531%2011-14%20STIP%20Rev%20%232%20-2.pdf>

SYSTEM PRESERVATION PROJECTS		Project Description	Bridge Assessment and Replacement Programs Yes: Project identified through DOT's Bridge Replacement Program, Honolulu's Bridge Inspection & Appraisal process or other bridge programming system No: Project did not result from DOT's Bridge Replacement Program, Honolulu's Bridge Inspection & Appraisal process or other bridge programming system	Pavement Management Programs Yes: Project identified through DOT's Pavement Management System, Honolulu's Roadway Pavement Condition Survey or other pavement evaluation system No: Project did not result from DOT's Pavement Management System, Honolulu's Roadway Pavement Condition Survey or other pavement evaluation system	Cost Participation High: Private industry funding has been secured Med: Private industry funding is anticipated Low: Does not include other financial involvement (i.e. private industry)	Project Stage High: Planning or Design has already been completed Med: Planning or Design is almost complete Low: The project has not yet begun	Gap Closure? Does this project close a gap or connect missing links in a route?	Mandated? Required by federal, state, or municipal laws, regulations or codes?	Addresses at least one SAFETEA-LU Planning Factor?	Listed in Regional Transportational Plans	HSTP Goals and Objectives Code	Revision #2
MC39.	Lahaina Watershed Flood Control Project, Phase 2	Flood Control project from Lahainaluna Road south two miles along Honoapiilani Highway. Improvements consist of open channels, sediment basins, debris basin and new outlet to the ocean.	N	N	L	H	N	N	Y	N	G101-2, G201-2, G301-2, G401	
MC15.	Lelekea Bridge Replacement (Hana Highway - Route 360)	Replace or repair existing concrete bridge. Construct roadway improvements at both approaches.	Y	N	L	L	N	N	Y	N	G101-2, G201-2, G301-2, G401	
MC18.	Lower Honoapiilani Road (Route 3080) Improvements, Hoohui Road to Napili Hau Road	Road widening, curb, gutter, sidewalk/paved shoulder, and drainage improvements. Replace Kahanahui Bridge. Approximately 1.50 miles.	Y	N	L	M	N	N	Y	N	G101-4, G201-2, G301-2, G401	
MC21.	Makani Road (Route 3630) Resurfacing, Haleakala Highway to Kalama Intermediate School	Resurface Makani Road from Old Haleakala Hwy to Kalama School. Approximately 2.06 miles.	N	Y	L	H	N	N	Y	N	G101-2, G201-2, G301, G401	
MC22.	Makawao Avenue - Makani Road (Route 3630) Improvements, Phase I - Eddie Tam Gymnasium to Kalama Intermediate School	Road widening with curb and gutters, sidewalk, drainage, and resurf/recon pavement. From Eddie Tam Gym to Kalama School.	N	N	L	M	N	N	Y	N	G101-4, G201-2, G301-2, G401, G502	
MC28.	Pukalani Street Pavement Reconstruction, Old Haleakala Highway to Iolani Street	Reconstruct pavement on Pukalani Street from Old Haleakala Hwy to Iolani Street. Improvements to include pavement striping and marking, signage and safety improvements. Approximately 0.23 miles.	N	Y	L	L	N	N	Y	N	G101-2, G201-2, G301, G401	
MC32.	Waiko Road Improvements, Kuihelani Highway to Waiale Road	Improve Waiko Road from Honoapiilani Hwy to Kuihelani Hwy, with two travel lanes, paved shoulders and drainage improvements. Approximately 1.25 miles.	N	N	L	L	N	N	Y	N	G101-3, G201-2, G301-2, G401	

DEPARTMENT OF TRANSPORTATION
STATEWIDE TRANSPORTATION IMPROVEMENT PROGRAM : FINANCIALLY CONSTRAINED
FFY 2011 THRU 2014 (FFY 2015-2016 Informative Only)

Click here to access the FFY 11-14(+2) STIP document: <http://hawaii.gov/dot/highways/STIP/110531%2011-14%20STIP%20Rev%20%232%20-2.pdf>

SYSTEM PRESERVATION PROJECTS		Project Description	Bridge Assessment and Replacement Programs Yes: Project identified through DOT's Bridge Replacement Program, Honolulu's Bridge Inspection & Appraisal process or other bridge programming system No: Project did not result from DOT's Bridge Replacement Program, Honolulu's Bridge Inspection & Appraisal process or other bridge programming system	Pavement Management Programs Yes: Project identified through DOT's Pavement Management System, Honolulu's Roadway Pavement Condition Survey or other pavement evaluation system No: Project did not result from DOT's Pavement Management System, Honolulu's Roadway Pavement Condition Survey or other pavement evaluation system	Cost Participation High: Private industry funding has been secured Med: Private industry funding is anticipated Low: Does not include other financial involvement (i.e. private industry)	Project Stage High: Planning or Design has already been completed Med: Planning or Design is almost complete Low: The project has not yet begun	Gap Closure? Does this project close a gap or connect missing links in a route?	Mandated? Required by federal, state, or municipal laws, regulations or codes?	Addresses at least one SAFETEA-LU Planning Factor?	Listed in Regional Transportation Plans	HSTP Goals and Objectives Code	Revision #2
MC33.	Waiohonu Bridge Replacement (Hana Highway - Route 360)	Replace or repair existing concrete bridge. Construct roadway improvements at both approaches.	Y	N	L	L	N	N	Y	N	G101-2, G201-2, G301-2, G401	

DEPARTMENT OF TRANSPORTATION
STATEWIDE TRANSPORTATION IMPROVEMENT PROGRAM : FINANCIALLY CONSTRAINED
FFY 2011 THRU 2014 (FFY 2015-2016 Informative Only)

Click here to access the FFY 11-14(+2) STIP document: <http://hawaii.gov/dot/highways/STIP/110531%2011-14%20STIP%20Rev%20%232%20-2.pdf>

SAFETY PROJECTS		Project Description	Highway Safety Improvement Program Yes: Project identified through DOT's Highway Safety Improvement Program or County Safety Improvement Program No: Project did not result from DOT's Highway Safety Improvement Program or County Safety Improvement Program	Rockfall Protection Study Yes: Project identified through DOT's Rockfall Protection Study No: Project did not result from DOT's Rockfall Protection Study	Cost Participation High: Private industry funding has been secured Med: Private industry funding is anticipated Low: Does not include other financial involvement (i.e. private industry)	Project Stage High: Planning or Design has already been completed Med: Planning or Design is almost complete Low: The project has not yet begun	Gap Closure? Does this project close a gap or connect missing links in a route?	Mandated? Required by federal, state, or municipal laws, regulations or codes?	Addresses at least one SAFETEA-LU Planning Factor?	Listed in Regional Transportation Plans	HSTP Goals and Objectives Code	Revision #2
	MAUI : STATE - FHWA											
MS1.	Guardrail and Shoulder Improvement Program at Various Locations, Maui, Parts 1 & 2	Improve guardrails and shoulders at various locations.	N	N	L	L	N	N	Y	N	G101-3, G201-2, G301, G401	
MS30.	Honoapiilani Highway (Route 30), Safety Improvements at Kaanapali Parkway and Halelo Street	Install flashing beacon on Honoapiilani Hwy. as approaching Kaanapali northbound. Check for adequate signal signs and lighting. Update traffic signal heads, pavement markings, striping and signing.	Y	N	L	M	N	N	Y	N	G101-3, G201-2, G301, G401	Defer and inflate CON in FY11 to \$218K in FY12. Procurement of electrical consultant is still ongoing.
MS8.	Honoapiilani Highway (Route 30), Safety Improvements, Vicinity of Kapoli Street to Ukumehameha Beach Park Road	Installation of milled rumble strips on centerline and shoulders, construct shoulder widening and drainage improvements, installation of guardrails and end treatments and upgrade/replace pavement markings and signing.	Y	N	L	M	N	N	Y	N	G101-3, G201-2, G301, G401	
MS32.	Kahului Beach Road (Route 3400), Lighting Improvements at Kanaloa Avenue (Route 3420)	Improve lighting along Kahului Beach Road and Kanaloa Avenue.	Y	N	L	M	N	N	Y	N	G101-3, G201-2, G301, G401	Defer and inflate CON in FY11 to \$541K in FY12 due to local funding delays.
MS33.	Puunene Avenue (Route 3500), Safety Improvements, Kaahumanu Ave. (Route 32) to Kamehameha Ave. (Route 3940)	Install two-way left turn lanes on Puunene Avenue from Kaahumanu Avenue to Kamehameha Avenue.	Y	N	L	M	N	N	Y	N	G101-4, G201-2, G301, G401, G502	DELETE project. Scope will be added to MS18--Puunene Ave Widening, Kaahumanu Ave to Kuihelani Hwy.
	MOLOKAI											

DEPARTMENT OF TRANSPORTATION
STATEWIDE TRANSPORTATION IMPROVEMENT PROGRAM : FINANCIALLY CONSTRAINED
FFY 2011 THRU 2014 (FFY 2015-2016 Informative Only)

Click here to access the FFY 11-14(+2) STIP document: <http://hawaii.gov/dot/highways/STIP/110531%2011-14%20STIP%20Rev%20%232%20-2.pdf>

SAFETY PROJECTS		Project Description	Highway Safety Improvement Program Yes: Project identified through DOT's Highway Safety Improvement Program or County Safety Improvement Program No: Project did not result from DOT's Highway Safety Improvement Program or County Safety Improvement Program	Rockfall Protection Study Yes: Project identified through DOT's Rockfall Protection Study No: Project did not result from DOT's Rockfall Protection Study	Cost Participation High: Private industry funding has been secured Med: Private industry funding is anticipated Low: Does not include other financial involvement (i.e. private industry)	Project Stage High: Planning or Design has already been completed Med: Planning or Design is almost complete Low: The project has not yet begun	Gap Closure? Does this project close a gap or connect missing links in a route?	Mandated? Required by federal, state, or municipal laws, regulations or codes?	Addresses at least one SAFETEA-LU Planning Factor?	Listed in Regional Transportation Plans	HSTP Goals and Objectives Code	Revision #2
MS20.	Guardrail and Shoulder Improvements Program at Various Locations, Molokai, Parts 1, 2 & 3	Improve guardrail and shoulders.	N	N	L	M	N	N	Y	N	G101-3, G201-2, G301, G401	

**DEPARTMENT OF TRANSPORTATION
STATEWIDE TRANSPORTATION IMPROVEMENT PROGRAM : FINANCIALLY CONSTRAINED
FFY 2011 THRU 2014 (FFY 2015-2016 Informative Only)**

Click here to access the FFY 11-14(+2) STIP document: <http://hawaii.gov/dot/highways/STIP/110531%2011-14%20STIP%20Rev%20%232%20-2.pdf>

CONGESTION MITIGATION PROJECTS		Project Description	Congestion Management System Yes: Project identified through a Congestion Management System process No: Project did not result from a Congestion Management System process	Highway Safety Improvement Program Yes: Project identified through DOT's Highway Safety Improvement Program or County Safety Improvement Program No: Project did not result from DOT's Highway Safety Improvement Program or County Safety Improvement Program	Cost Participation High: Private industry funding has been secured Med: Private industry funding is anticipated Low: Does not include other financial involvement (i.e. private industry)	Project Stage High: Planning or Design has already been completed Med: Planning or Design is almost complete Low: The project has not yet begun	Traffic Signal Warrants Traffic signal project meets the criteria in the Traffic Signal Warrants	Gap Closure? Does this project close a gap or connect missing links in a route?	Mandated? Required by federal, state, or municipal laws, regulations or codes?	Addresses at least one SAFETEA-LU Planning Factor?	Listed in Regional Transportational Plans	HSTP Goals and Objectives Code
	COUNTY OF MAUI - FHWA											
MC10.	Kamehameha Avenue (Route 3940)Traffic Signals at Kane Street	Traffic signal installation, intersection improvements, curb ramp improvements.	N	N	L	L	Y	N	N	Y	N	G101-4, G201-2, G302, G401, G502
MC17.	Lono Avenue (Route 3950) Traffic Signal Improvements at Papa Avenue (Route 3910)	Traffic signal system, related intersection improvements, utility relocations, curb ramp improvements.	N	N	L	L	Y	N	N	Y	N	G101-4, G201-2, G302, G401, G502
MC25.	Mill Street (Route 3840) Traffic Signal at Imi Kala Street	Traffic signal installation, curb, gutter, sidewalk, curb ramp, drainage improvements. Right-of-way expansion.	N	N	L	L	Y	N	N	Y	N	G101-4, G201-2, G302, G401, G502
MC27.	Papa Avenue (Route 3910) Traffic Signals at Hina Avenue (Route 3930)	Traffic signal installation, curb, gutter, sidewalk, curb ramp, drainage improvements. Right-of-way expansion.	N	N	L	L	Y	N	N	Y	N	G101-4, G201-2, G302, G401, G502

DEPARTMENT OF TRANSPORTATION
STATEWIDE TRANSPORTATION IMPROVEMENT PROGRAM : FINANCIALLY CONSTRAINED
FFY 2011 THRU 2014 (FFY 2015-2016 Informative Only)

Click here to access the FFY 11-14(+2) STIP document: <http://hawaii.gov/dot/highways/STIP/110531%2011-14%20STIP%20Rev%20%232%20-2.pdf>

CONGESTION MITIGATION PROJECTS		Project Description	Congestion Management System Yes: Project identified through a Congestion Management System process No: Project did not result from a Congestion Management System process	Highway Safety Improvement Program Yes: Project identified through DOT's Highway Safety Improvement Program or County Safety Improvement Program No: Project did not result from DOT's Highway Safety Improvement Program or County Safety Improvement Program	Cost Participation High: Private industry funding has been secured Med: Private industry funding is anticipated Low: Does not include other financial involvement (i.e. private industry)	Project Stage High: Planning or Design has already been completed Med: Planning or Design is almost complete Low: The project has not yet begun	Traffic Signal Warrants Traffic signal project meets the criteria in the Traffic Signal Warrants	Gap Closure? Does this project close a gap or connect missing links in a route?	Mandated? Required by federal, state, or municipal laws, regulations or codes?	Addresses at least one SAFETEA-LU Planning Factor?	Listed in Regional Transportational Plans	HSTP Goals and Objectives Code
Projects that increase the efficiency of the highway system, such as: - traffic signal modernization projects - operational improvement projects - ITS projects												
MC31.	Waiale Road (Route 3180) Traffic Signals at Waiinu Road	Traffic signal installation, curb, gutter, sidewalk, curb ramp, drainage improvements.	N	N	L	L	Y	N	N	Y	N	G101-4, G201-2, G302, G401, G502
MC35.	Wakea Avenue (Rte 3920) Traffic Signals at Hina Avenue (Rte 3930)	Traffic signal installation, curb, gutter, sidewalk, curb ramp, drainage improvements.	N	N	L	L	Y	N	N	Y	N	G101-4, G201-2, G302, G401, G502

DEPARTMENT OF TRANSPORTATION
STATEWIDE TRANSPORTATION IMPROVEMENT PROGRAM : FINANCIALLY CONSTRAINED
FFY 2011 THRU 2014 (FFY 2015-2016 Informative Only)

Click here to access the FFY 11-14(+2) STIP document: <http://hawaii.gov/dot/highways/STIP/110531%2011-14%20STIP%20Rev%20%232%20-2.pdf>

MODERNIZATION PROJECTS		Project Description	Congestion Management System	Highway Safety Improvement Program	Cost Participation	Project Stage	Traffic Signal Warrants	Gap Closure?	Mandated?	Addresses at least one SAFETEA-LU Planning Factor?	Listed in Regional Transportation Plans	HSTP Goals and Objectives Code	Revision #2
Projects that add capacity to the highway system, such as: - new highway projects - widening projects (additional capacity) - second access projects - ITS projects			Yes: Project identified through a Congestion Management System process No: Project did not result from a Congestion Management System process	Yes: Project identified through DOT's Highway Safety Improvement Program or County Safety Improvement Program No: Project did not result from DOT's Highway Safety Improvement Program or County Safety Improvement Program	High: Private industry funding has been secured Med: Private industry funding is anticipated Low: Does not include other financial involvement (i.e. private industry)	High: Planning or Design has already been completed Med: Planning or Design is almost complete Low: The project has not yet begun	Traffic signal project meets the criteria in the Traffic Signal Warrants	Does this project close a gap or connect missing links in a route?	Required by federal, state, or municipal laws, regulations or codes?				
	MAUI : STATE - FHWA												
MS4.	Hana Highway (Route 36) Widening, Kaahumanu Avenue (Route 32) to Vicinity of Airport Access Road	Widen Hana Highway.	Y	N	L	M	N	N	N	Y	Y	G101-4, G201-2, G301-2, G401, G502	Defer and inflate ROW in FY11 to \$110K in FY12, still working on the consultant contract. Defer and inflate CON in FY14 to \$6.76M in FY16 to financially constrain the STIP. Delete advance construction reimbursement in FY15.
MS7.	Honoapiilani Highway (Route 30) Realignment, Phase 1B2, Hokiokio Place to Relocated Southern Terminus	Continuation of Lahaina Bypass from Hokiokio Plance to Relocated Southern Terminus.	Y	N	L	L	N	Y	N	Y	Y	G101-4, G201-2, G301-2, G401, G502	
MS9.	Honoapiilani Highway (Route 30) Widening and/or Realignment, Phase IC, Keawe Street Extension to Kaanapali Connector	Continuation of Lahaina Bypass from Keawe Street Extension to Kaanapali Connector.	Y	N	L	M	N	Y	N	Y	Y	G101-4, G201-2, G301-2, G401, G502	
MS10.	Honoapiilani Highway (Route 30) Widening, Maalaea to Launiupoko	Improvements to Honoapiilani Hwy between Maalaea and Launiupoko to address high ocean surges crossing portions of the hwy, traffic accidents & fire hazards. Improvements may involve widening portions of the existing hwy and/or constructing a new hwy along a different alignment. Planning phase to determine the scope of the improvements is underway.	Y	N	L	L	N	Y	N	Y	Y	G101-4, G201-2, G301-2, G401, G502	Defer \$4.16M of DES and \$100K of PreROW, both in FY16 to out years to financially constrain the STIP.

DEPARTMENT OF TRANSPORTATION
STATEWIDE TRANSPORTATION IMPROVEMENT PROGRAM : FINANCIALLY CONSTRAINED
FFY 2011 THRU 2014 (FFY 2015-2016 Informative Only)

Click here to access the FFY 11-14(+2) STIP document: <http://hawaii.gov/dot/highways/STIP/110531%2011-14%20STIP%20Rev%20%232%20-2.pdf>

MODERNIZATION PROJECTS		Project Description	Congestion Management System Yes: Project identified through a Congestion Management System process No: Project did not result from a Congestion Management System process	Highway Safety Improvement Program Yes: Project identified through DOT's Highway Safety Improvement Program or County Safety Improvement Program No: Project did not result from DOT's Highway Safety Improvement Program or County Safety Improvement Program	Cost Participation High: Private industry funding has been secured Med: Private industry funding is anticipated Low: Does not include other financial involvement (i.e. private industry)	Project Stage High: Planning or Design has already been completed Med: Planning or Design is almost complete Low: The project has not yet begun	Traffic Signal Warrants Traffic signal project meets the criteria in the Traffic Signal Warrants	Gap Closure? Does this project close a gap or connect missing links in a route?	Mandated? Required by federal, state, or municipal laws, regulations or codes?	Addresses at least one SAFETEA-LU Planning Factor?	Listed in Regional Transportation Plans	HSTP Goals and Objectives Code	Revision #2
MS11.	Kahului Airport Access Road (Route 3800)	Construction for a portion of the new access road to Kahului Airport from the vicinity of Puunene Ave to Hana Hwy. Includes landscaping, drainage, hwy lighting, utilities and other misc improvements.	Y	N	L	M	N	Y	N	Y	Y	G101-4, G201-2, G301-2, G401, G502	Advance CON in FY13 to FY12. New CON estimate is \$25M, which was originally \$30M. Adjust advance construction reimbursement to FY13 only.
MS16.	Paia Bypass Road (Paia Alternative Route, Vicinity of Spreckelsville to Vicinity of Hookipa Park)	Plans for alternative traffic improvements in the vicinity of Paia town.	Y	N	L	L	N	N	N	Y	Y	G101-4, G201-2, G301-2, G401, G502	Defer \$3.2M of ROW in FY16 to out years to financially constrain the STIP.
MS35.	Piilani Highway, Traffic Operational Improvements at Ohukai Road	Convert the Piilani Highway Intersection at Ohukai Road to an eight way intersection. This will involve adding left and right turn lanes on Ohukai, relocating and rearranging the traffic signals.	N	N	L	M	N	N	N	Y	Y	G101-4, G201-2, G301-2, G401, G502	NEW project.
MS18.	Puunene Avenue (Rte 3500) Widening, Kamehameha-Kaahumanu Avenue (Rte 32) to Kuihelani Highway (Route 380), MP 0.46 to 1.09	Widen Puunene Ave. Install two-way left turn lanes on Puunene Ave from Kaahumanu Ave to Kamehameha Ave. Create bicycle route/lanes on Puunene Ave from Kaahumanu Ave to Kuihelani Hwy, as called for in Bike Plan Hawaii.	Y	N	L	L	N	N	N	Y	Y	G101-4, G201-2, G301-2, G401, G502	Changed \$30K of ROW in FY11 to PreROW. Project is not ready to oblig ROW funds. Still negotiating contract with consultant. Added \$150K of ROW in FY14. Defer and increase \$4.5M CON in FY14 to \$6.9M (dual-funded) in FY15 to account for added scope from MS17 & MS33, and thus revised project limits. Delete advance construction reimbursement in FY15.

**DEPARTMENT OF TRANSPORTATION
STATEWIDE TRANSPORTATION IMPROVEMENT PROGRAM : FINANCIALLY CONSTRAINED
FFY 2011 THRU 2014 (FFY 2015-2016 Informative Only)**

Click here to access the FFY 11-14(+2) STIP document: <http://hawaii.gov/dot/highways/STIP/110531%2011-14%20STIP%20Rev%20%232%20-2.pdf>

ENHANCEMENT PROJECTS Transportation enhancement projects, such as: - bikeway projects - landscaping projects - pedestrian facilities projects		Project Description	Hawaii Statewide Enhancement Program Is the project classified as "Potentially Fundable" for use of Transportation Enhancement funds by the Hawaii Procedures for TE Projects?	Cost Participation High: Private industry funding has been secured Med: Private industry funding is anticipated Low: Does not include other financial involvement (i.e. private industry)	Project Stage High: Planning or Design has already been completed Med: Planning or Design is almost complete Low: The project has not yet begun	Gap Closure? Does this project close a gap or connect missing links in a route?	Mandated? Required by federal, state, or municipal laws, regulations or codes?	Addresses at least one SAFETEA-LU Planning Factor?	Listed in Regional Transportational Plans	HSTP Goals and Objectives Code	Revision #2
MAUI : STATE - FHWA											
MS2.	Haleakala Crater Road, (Route 378), Bikeway Pull-Out Areas	Improve Haleakala National Park Access Road to accommodate bicyclists.	Y	L	M	N	N	Y	N	G101-4, G201-2, G301-2, G401-2, G502	
MS3.	Hana Highway (Route 36)/ Kaahumanu Ave. (Route 32) Beautification Dairy Road (Route 380) to Naniloa Overpass	Beautification of the main corridor between Kahului and Wailuku to include landscape and irrigation.	Y	L	M	N	N	Y	N	G101-4, G201-2, G301-2, G401-2, G502	
MS14.	National Recreational Trails Program - Maui (DLNR)	A Federal-aid assistance program to help the State provide and maintain recreational trails for both motorized and non-motorized recreational use. Anticipated funding for Maui program.	N	L	L	N	N	Y	N	G101-3, G201, G301-2, G401-2, G502	
MS17.	Puunene Avenue (Route 3500) Bicycle Improvements, Kaahumanu Avenue (Route 32) to Kuihelani Highway (Route 380)	Create bicycle route/lanes on Puunene Ave. from Kaahumanu Ave. to Kuihelani Hwy, as called for in Bike Plan Hawaii.	N	L	M	N	N	Y	N	G101-4, G201-2, G301-2, G401-2, G502	DELETE project. Scope will be added to MS18-- Puunene Ave Widening, Kaahumanu Ave to Kuihelani Hwy.
COUNTY OF MAUI - FHWA											
MC34.	Waipuilani Bikepath	Construct bikepath on beach reserve, from Kulanihakoi Street to Waipuilani State Park. Approximately 0.5 miles.	Y	L	L	N	N	Y	N	G101-4, G201-2, G301-2, G401-2, G502	

DEPARTMENT OF TRANSPORTATION
STATEWIDE TRANSPORTATION IMPROVEMENT PROGRAM : FINANCIALLY CONSTRAINED
FFY 2011 THRU 2014 (FFY 2015-2016 Informative Only)

Click here to access the FFY 11-14(+2) STIP document: <http://hawaii.gov/dot/highways/STIP/110531%2011-14%20STIP%20Rev%20%232%20-2.pdf>

TRANSIT PROJECTS		Project Description	Maintains Existing System Does it maintain and operate existing fixed route bus and complementary paratransit system?	Completes Multi-Phase Project Does it complete a multi-phase project that has started?	Enhances Hub-and-Spoke System Does it enhance system performance through implementation of hub-and-spoke system?	Enhances Safety and Security Does it enhance safety/security of passengers and the system and enhances service quality level?	New Transit Service	Local Match in Year 1 Budget	Local Match Possible in Years 2, 3 or 4 Budget	Addresses at least one SAFETEA-LU Planning Factor?	Listed in Regional Transportation Plans	HSTP Goals and Objectives Code	Revision #2
MAUI : STATE - FTA													
MS24.	Lahaina Small Boat Harbor and Ferry Pier	New ferry pier, sewage pump-out stations, lighting, berthing area, dredging, replacing the existing administration office and ferry ticket booth, resurfacing Wharf Street, new parking stalls and sidewalk widening.	Y	N	Y	Y	Y	Y	N/A	Y	N	G101-3, G201-2, G301-2, G401	Add DES in FY11. Defer CON from FY11 to FY12 and increase estimate to reflect current costs.
MS25.	Improvements at Maalaea Small Boat Harbor, Ferry System Improvements	Repairing existing loading dock and reconstructing the adjacent administrative office building on the South Mole; installing electrical utilities and street lights, water mains and other utilities; repair South Mole roadway and parking areas, new comfort station.	Y	N	Y	Y	N	Y	N/A	Y	N	G101-3, G201-2, G301-2, G401	Decrease CON estimate in FY11 since a portion has already been obligated.
MS26.	Maalaea Small Boat Harbor Improvements	Planning for improvements to the South Mole to accommodate the increased need to facilitate ferry passenger drop off and loading due to limited existing parking.	Y	N	Y	Y	Y	Y	Y	Y	N	G101-3, G201-2, G301-2, G401	DELETE project. This project is a duplicate of MS25.
MOLOKAI													
MS27.	Kaunakakai Harbor Ferry System Improvements	Construct new restroom/administrative office; sewer pump station and force main to the county sewer system; sewage pump out station; water main and fire hydrants.	Y	N	Y	Y	Y	Y	N/A	Y	N	G101-3, G201-2, G301-2, G401	Decrease CON estimate in FY11 to reflect current cost estimates.
LANAI													
MS29.	Manele Small Boat Harbor Ferry Pier	New ferry pier, loading dock and related improvements.	Y	N	Y	Y	Y	Y	Y	Y	N	G101-3, G201-2, G301-2, G401	Increase DES estimate in FY11. Decrease CON estimate in FY11. Delete CON in FY12. Changes have been made to reflect current estimates.

DEPARTMENT OF TRANSPORTATION
STATEWIDE TRANSPORTATION IMPROVEMENT PROGRAM : FINANCIALLY CONSTRAINED
FFY 2011 THRU 2014 (FFY 2015-2016 Informative Only)

Click here to access the FFY 11-14(+2) STIP document: <http://hawaii.gov/dot/highways/STIP/110531%2011-14%20STIP%20Rev%20%232%20-2.pdf>

TRANSIT PROJECTS		Project Description	Maintains Existing System	Completes Multi-Phase Project	Enhances Hub-and-Spoke System	Enhances Safety and Security	New Transit Service	Local Match in Year 1 Budget	Local Match Possible in Years 2, 3 or 4 Budget	Addresses at least one SAFETEA-LU Planning Factor?	Listed in Regional Transportation Plans	HSTP Goals and Objectives Code	Revision #2
			Does it maintain and operate existing fixed route bus and complementary paratransit system?	Does it complete a multi-phase project that has started?	Does it enhance system performance through implementation of hub-and-spoke system?	Does it enhance safety/security of passengers and the system and enhances service quality level?							
	COUNTY OF MAUI - FTA												
MC36.	Bus and Bus Facility	Purchase buses and operate bus transit facilities.	Y	Y	Y	Y	Y	Y	Y	Y	N	G101-3, G201-2, G301-2, G401	
MC37.	Rural Transportation Program	Operate public transit system.	Y	Y	Y	Y	Y	Y	Y	Y	N	G101-3, G201-2, G301-2, G401	
MC40	Bus and Bus Facility	Purchase of buses and construction of bus shelters. These funds have been previously obligated. Usage has been adjusted.	Y	Y	Y	Y	Y	Y	Y	Y	N	G101-3, G201-2, G301-2, G401	NEW Project.

DEPARTMENT OF TRANSPORTATION
STATEWIDE TRANSPORTATION IMPROVEMENT PROGRAM : FINANCIALLY CONSTRAINED
FFY 2011 THRU 2014 (FFY 2015-2016 Informative Only)

Click here to access the FFY 11-14(+2) STIP document: <http://hawaii.gov/dot/highways/STIP/110531%2011-14%20STIP%20Rev%20%232%20-2.pdf>

SYSTEM PRESERVATION PROJECTS		Project Description	Bridge Assessment and Replacement Programs Yes: Project identified through DOT's Bridge Replacement Program, Honolulu's Bridge Inspection & Appraisal process or other bridge programming system No: Project did not result from DOT's Bridge Replacement Program, Honolulu's Bridge Inspection & Appraisal process or other bridge programming system	Pavement Management Programs Yes: Project identified through DOT's Pavement Management System, Honolulu's Roadway Pavement Condition Survey or other pavement evaluation system No: Project did not result from DOT's Pavement Management System, Honolulu's Roadway Pavement Condition Survey or other pavement evaluation system	Cost Participation High: Private industry funding has been secured Med: Private industry funding is anticipated Low: Does not include other financial involvement (i.e. private industry)	Project Stage High: Planning or Design has already been completed Med: Planning or Design is almost complete Low: The project has not yet begun	Gap Closure? Does this project close a gap or connect missing links in a route?	Mandated? Required by federal, state, or municipal laws, regulations or codes?	Addresses at least one SAFETEA-LU Planning Factor?	Listed in Regional Transportation Plans	HSTP Goals and Objectives Code	Revision #2
KAUAI : STATE - FHWA												
KS2.	Kapule Highway / Rice Street / Waapa (Route 51) Road Improvements and Nawiliwili Bridge Replacement	Strengthen/widen existing Nawiliwili Bridge. Implement drainage improvements and safety improvements including new signing and striping and guardrails. Improve roadway approach to the bridge.	Y	N	L	L	N	N	Y	N	G101-2, G201-2, G301-2, G401	Defer \$3.775M of CON in FY15 to out years and delete advance construction reimbursement in FY16 to financially constrain the STIP.
KS4.	Kaumualii Highway (Route 50), Bridge Rehabilitation, Bridge No. 7E	Repair/rehabilitate bridge 7E on Kaumualii Highway update to current bridge standards.	Y	N	L	L	N	N	Y	N	G101-2, G201-2, G301, G401	
KS5.	Kaumualii Highway (Route 50), Bridge Rehabilitation, Omao Bridge	Rehabilitation of concrete T-girder bridge on Kaumualii Hwy in the vicinity of Omao Road.	Y	N	L	M	N	N	Y	N	G101-2, G201-2, G301-2, G401	Defer and inflate CON in FY14 to \$7.35M in FY15. Delete advance construction reimbursement in FY15. Deferral and deletion are to financially constrain the STIP.
KS11.	Kuhio Highway (Route 56), Bridge Replacement, Kapaia Bridge	Replacement of a multi-T beam reinforced concrete girder on Kuhio Hwy in the vicinity of Kapaia.	Y	N	L	M	N	N	Y	N	G101-2, G201-2, G301-2, G401	Delete advance construction reimbursement in FY13, thus adjust federal portion for CON in FY12.
KS13.	Kuhio Highway (Route 560), Bridge Replacements, Waioli, Waipa, and Waikoko Stream Bridges	Replace existing bridges.	Y	N	L	L	N	N	Y	N	G101-2, G201-2, G301-2, G401	Defer and inflate CON in FY14 to \$8.5M in FY15. Delete advance construction reimbursement in FY15-16. Deferral and deletion are to financially constrain the STIP.
KS21.	Kuhio Highway (Route 560), Shoreline Protection, Vicinity of Hanalei Bay	Construct revetment to protect about 1,600 feet of highway on the extreme west side of Hanalei Bay that is subject to seasonal wave attack.	N	N	L	M	N	N	Y	N	G101-2, G201-2, G301	Defer \$2.5M of CON in FY15 to out years to financially constrain the STIP. Delete advance construction reimbursement in FY16.

DEPARTMENT OF TRANSPORTATION
STATEWIDE TRANSPORTATION IMPROVEMENT PROGRAM : FINANCIALLY CONSTRAINED
FFY 2011 THRU 2014 (FFY 2015-2016 Informative Only)

Click here to access the FFY 11-14(+2) STIP document: <http://hawaii.gov/dot/highways/STIP/110531%2011-14%20STIP%20Rev%20%232%20-2.pdf>

SYSTEM PRESERVATION PROJECTS		Project Description	Bridge Assessment and Replacement Programs Yes: Project identified through DOT's Bridge Replacement Program, Honolulu's Bridge Inspection & Appraisal process or other bridge programming system No: Project did not result from DOT's Bridge Replacement Program, Honolulu's Bridge Inspection & Appraisal process or other bridge programming system	Pavement Management Programs Yes: Project identified through DOT's Pavement Management System, Honolulu's Roadway Pavement Condition Survey or other pavement evaluation system No: Project did not result from DOT's Pavement Management System, Honolulu's Roadway Pavement Condition Survey or other pavement evaluation system	Cost Participation High: Private industry funding has been secured Med: Private industry funding is anticipated Low: Does not include other financial involvement (i.e. private industry)	Project Stage High: Planning or Design has already been completed Med: Planning or Design is almost complete Low: The project has not yet begun	Gap Closure? Does this project close a gap or connect missing links in a route?	Mandated? Required by federal, state, or municipal laws, regulations or codes?	Addresses at least one SAFETEA-LU Planning Factor?	Listed in Regional Transportation Plans	HSTP Goals and Objectives Code	Revision #2
	COUNTY OF KAUAI - FHWA											
KC2.	Bridge Inspection and Appraisal	Inspection of various bridges throughout the County. FHWA Requirement.	N	N	L	M	N	Y	Y	N	G101-2, G201-2	
KC3.	Hanapepe Bridge Repairs and Pedestrian Bridge Repairs/Replacement	Repair of cracks and spalls on the bridge girders/soffit/abutments/piers and the repair/replacement of the pedestrian walkway crossing Hanapepe Bridge on Hanapepe Road. The bridge and the pedestrian walkway is about 200 feet long. The walkway is elevated and above roadway pavement.	Y	N	L	M	N	N	Y	N	G101-3, G201-2, G301-2, G401	Project is no longer proceeding as DES/Build. DES/CON phase has been replaced with separate DES and CON phases, with updated estimates. Updated total project cost is \$575K.
KC5.	Kamalu Bridge (Route 581) Erosion Protection Repairs	Repair/Replace damaged erosion control protection at the abutments and piers of Kamalu Bridge.	Y	N	L	M	N	N	Y	N	G101-2, G201-2, G301-2, G401	
KC6.	Kamalu Road (Route 581) Bridge Replacement	Realignment of Kamalu Road from its intersection with Opaekaa Road to a point approximately 3,305 feet east including installation of new bridge crossing Kalama Stream.	N	N	L	L	N	N	Y	N	G101-2, G201-2, G301-2, G401	
KC7.	Kapahi Bridge Replacement	Replace the existing bridge with a new H-20 concrete bridge approximately 60 feet long by 35 feet wide including approach ramps, guardrails, pedestrian walkway and utility accommodations.	Y	N	L	M	N	N	Y	N	G101-2, G201-2, G301-2, G401	

DEPARTMENT OF TRANSPORTATION
STATEWIDE TRANSPORTATION IMPROVEMENT PROGRAM : FINANCIALLY CONSTRAINED
FFY 2011 THRU 2014 (FFY 2015-2016 Informative Only)

Click here to access the FFY 11-14(+2) STIP document: <http://hawaii.gov/dot/highways/STIP/110531%2011-14%20STIP%20Rev%20%232%20-2.pdf>

SYSTEM PRESERVATION PROJECTS		Project Description	Bridge Assessment and Replacement Programs Yes: Project identified through DOT's Bridge Replacement Program, Honolulu's Bridge Inspection & Appraisal process or other bridge programming system No: Project did not result from DOT's Bridge Replacement Program, Honolulu's Bridge Inspection & Appraisal process or other bridge programming system	Pavement Management Programs Yes: Project identified through DOT's Pavement Management System, Honolulu's Roadway Pavement Condition Survey or other pavement evaluation system No: Project did not result from DOT's Pavement Management System, Honolulu's Roadway Pavement Condition Survey or other pavement evaluation system	Cost Participation High: Private industry funding has been secured Med: Private industry funding is anticipated Low: Does not include other financial involvement (i.e. private industry)	Project Stage High: Planning or Design has already been completed Med: Planning or Design is almost complete Low: The project has not yet begun	Gap Closure? Does this project close a gap or connect missing links in a route?	Mandated? Required by federal, state, or municipal laws, regulations or codes?	Addresses at least one SAFETEA-LU Planning Factor?	Listed in Regional Transportation Plans	HSTP Goals and Objectives Code	Revision #2
KC13.	Puhi Road (Route 501) Ultra-Thin Whitetopping (UTW)	Rehabilitate Puhi Road using Ultra-Thin Whitetopping (UTW) and cement treated recycled Base. Puhi Road is a 2-lane major street with 12' lanes. The project will start at the intesection of the Kaumualii Highway - Puhi Road intersection and extend approximately 0.4 miles to the Kaneka St. - Puhi Road intersection.	N	Y	L	M	N	N	Y	N	G101-2, G201-2, G301, G401	
KC14.	Puuopae Bridge Replacement	Replace existing bridge.	Y	N	L	L	N	N	Y	N	G101-2, G201-2, G301-2, G401	
KC15.	Resurfacing of Hanapepe Rd (Rte 545), Including Road Pavement Repairs as Necessary	Resurface the entire length (5400 feet) of Hanapepe Road. Full depth reclamation (FDR) technology will be used on this project whenever necessary to match existing adjacent facilities.	N	Y	L	L	N	N	Y	N	G101-2, G201-2, G301, G401	

**DEPARTMENT OF TRANSPORTATION
STATEWIDE TRANSPORTATION IMPROVEMENT PROGRAM : FINANCIALLY CONSTRAINED
FFY 2011 THRU 2014 (FFY 2015-2016 Informative Only)**

Click here to access the FFY 11-14(+2) STIP document: <http://hawaii.gov/dot/highways/STIP/110531%2011-14%20STIP%20Rev%20%232%20-2.pdf>

SAFETY PROJECTS		Project Description	Highway Safety Improvement Program	Rockfall Protection Study	Cost Participation	Project Stage	Gap Closure?	Mandated?	Addresses at least one SAFETEA-LU Planning Factor?	Listed in Regional Transportation Plans	HSTP Goals and Objectives Code	Revision #2
Projects that mitigate high accident and hazardous sites, such as: - guardrail and shoulder improvement projects - rockfall and slope stabilization projects - street light pole replacement projects - emergency telephone projects - Intelligent Transportation System (ITS)			Yes: Project identified through DOT's Highway Safety Improvement Program or County Safety Improvement Program No: Project did not result from DOT's Highway Safety Improvement Program or County Safety Improvement Program	Yes: Project identified through DOT's Rockfall Protection Study No: Project did not result from DOT's Rockfall Protection Study	High: Private industry funding has been secured Med: Private industry funding is anticipated Low: Does not include other financial involvement (i.e. private industry)	High: Planning or Design has already been completed Med: Planning or Design is almost complete Low: The project has not yet begun	Does this project close a gap or connect missing links in a route?	Required by federal, state, or municipal laws, regulations or codes?				
	KAUAI : STATE - FHWA											
KS1.	Guardrail and Shoulder Improvements on State Highways, Kauai, Parts 1, 2 & 3	Improve guardrails and shoulders at various locations.	N	N	L	L	N	N	Y	N	G101-3, G201-2, G301, G401	
KS9.	Kaumualii Highway (Route 50) Safety Improvements in the Vicinity of Kahili Mountain Park Road to Hanapepe Lookout	Installation of milled rumble strips on centerline and shoulders, construct shoulder widening and drainage improvements, installation of guardrails and end treatments and upgrade/replace pavement markings and signing.	Y	N	L	L	N	N	Y	N	G101-3, G201-2, G301, G401	
KS20.	Kuhio Highway (Route 56), Mailihuna Road Intersection Improvements and Kapaa Stream Bridge Rehabilitation	Safety improvements at Mailihuna Road intersection and Kapaa Stream Bridge including guardrail upgrades, wider shoulders for pedestrians and bicycles. The bridge will be strengthened to accommodate present day vehicular modes.	N	N	L	L	N	N	Y	N	G101-3, G201-2, G301, G401	
KS17.	Kuhio Highway (Route 560) Safety Improvements, Hanalei Bridge to Waikoko Bridge	Install rumble strips on centerline and shoulders, roughen roadway surface, construct drainage improvements, installation of guardrails and end treatments and upgrade/replace pavement markings and signing.	Y	N	L	H	N	N	Y	N	G101-3, G201-2, G301, G401	Defer and inflate CON in FY11 to \$1.5M in FY12. Still procuring consultant.
KS22.	Maalo Road (RTE 583), Guardrail and Shoulder Improvements, MP 0 - MP 3.92	Remove existing guardrail, install new guardrail and construct end treatments.	N	N	L	M	N	N	Y	N	G101-3, G201-2, G301, G401	
	COUNTY OF KAUAI - FHWA											

DEPARTMENT OF TRANSPORTATION
STATEWIDE TRANSPORTATION IMPROVEMENT PROGRAM : FINANCIALLY CONSTRAINED
FFY 2011 THRU 2014 (FFY 2015-2016 Informative Only)

Click here to access the FFY 11-14(+2) STIP document: <http://hawaii.gov/dot/highways/STIP/110531%2011-14%20STIP%20Rev%20%232%20-2.pdf>

SAFETY PROJECTS		Project Description	Highway Safety Improvement Program Yes: Project identified through DOT's Highway Safety Improvement Program or County Safety Improvement Program No: Project did not result from DOT's Highway Safety Improvement Program or County Safety Improvement Program	Rockfall Protection Study Yes: Project identified through DOT's Rockfall Protection Study No: Project did not result from DOT's Rockfall Protection Study	Cost Participation High: Private industry funding has been secured Med: Private industry funding is anticipated Low: Does not include other financial involvement (i.e. private industry)	Project Stage High: Planning or Design has already been completed Med: Planning or Design is almost complete Low: The project has not yet begun	Gap Closure? Does this project close a gap or connect missing links in a route?	Mandated? Required by federal, state, or municipal laws, regulations or codes?	Addresses at least one SAFETEA-LU Planning Factor?	Listed in Regional Transportation Plans	HSTP Goals and Objectives Code	Revision #2
Projects that mitigate high accident and hazardous sites, such as: - guardrail and shoulder improvement projects - rockfall and slope stabilization projects - street light pole replacement projects - emergency telephone projects - Intelligent Transportation System (ITS)												
KC4.	Hardy Street (Route 572) Improvements	Safety imprvmts including reconstruction & widening of traffic lanes, construction of turning lanes, sidewalks, drainage inlets and culvert extension, replacement & upgrades, revising street parking, utility adjustment, traffic sign & striping, landscaping & other roadway improvements. The project begins at Kuhio Hwy. & ends at the Rice St.- 0.7 mi.	N	N	L	M	N	N	Y	N	G101-3, G201-2, G301, G401	Defer and inflate DES/CON from \$4.5M in FY11 to \$4.68M in FY12. Still working on environmental clearances. Updated total project cost is \$4.68M.
KC20.	Koloa Road Safety Guardrail and Safety Improvement	Installation of guardrails along with improved striping, pavement marker and signage along Koloa Road (9,000 linear feet).	Y	N	L	L	N	N	Y	N	G101-3, G201-2, G301, G401	NEW project.

DEPARTMENT OF TRANSPORTATION
STATEWIDE TRANSPORTATION IMPROVEMENT PROGRAM : FINANCIALLY CONSTRAINED
FFY 2011 THRU 2014 (FFY 2015-2016 Informative Only)

Click here to access the FFY 11-14(+2) STIP document: <http://hawaii.gov/dot/highways/STIP/110531%2011-14%20STIP%20Rev%20%232%20-2.pdf>

CONGESTION MITIGATION PROJECTS		Project Description	Congestion Management System Yes: Project identified through a Congestion Management System process No: Project did not result from a Congestion Management System process	Highway Safety Improvement Program Yes: Project identified through DOT's Highway Safety Improvement Program or County Safety Improvement Program No: Project did not result from DOT's Highway Safety Improvement Program or County Safety Improvement Program	Cost Participation High: Private industry funding has been secured Med: Private industry funding is anticipated Low: Does not include other financial involvement (i.e. private industry)	Project Stage High: Planning or Design has already been completed Med: Planning or Design is almost complete Low: The project has not yet begun	Traffic Signal Warrants Traffic signal project meets the criteria in the Traffic Signal Warrants	Gap Closure? Does this project close a gap or connect missing links in a route?	Mandated? Required by federal, state, or municipal laws, regulations or codes?	Addresses at least one SAFETEA-LU Planning Factor?	Listed in Regional Transportation Plans	HSTP Goals and Objectives Code	Revision #2
	KAUAI : STATE - FHWA												
KS19.	Kuhio Highway (Route 56) Intersection Improvements at Leho Street (N)	Implement intersection improvements on Kuhio Highway at Leho Street to improve safety and operational efficiency.	N	Y	L	L	N	N	N	Y	N	G101-4, G201-2, G302, G401, G502	Delete DES in FY11 since it was already obligated in FY10.

DEPARTMENT OF TRANSPORTATION
STATEWIDE TRANSPORTATION IMPROVEMENT PROGRAM : FINANCIALLY CONSTRAINED
FFY 2011 THRU 2014 (FFY 2015-2016 Informative Only)

Click here to access the FFY 11-14(+2) STIP document: <http://hawaii.gov/dot/highways/STIP/110531%2011-14%20STIP%20Rev%20%232%20-2.pdf>

MODERNIZATION PROJECTS		Project Description	Congestion Management System Yes: Project identified through a Congestion Management System process No: Project did not result from a Congestion Management System process	Highway Safety Improvement Program Yes: Project identified through DOT's Highway Safety Improvement Program or County Safety Improvement Program No: Project did not result from DOT's Highway Safety Improvement Program or County Safety Improvement Program	Cost Participation High: Private industry funding has been secured Med: Private industry funding is anticipated Low: Does not include other financial involvement (i.e. private industry)	Project Stage High: Planning or Design has already been completed Med: Planning or Design is almost complete Low: The project has not yet begun	Traffic Signal Warrants Traffic signal project meets the criteria in the Traffic Signal Warrants	Gap Closure? Does this project close a gap or connect missing links in a route?	Mandated? Required by federal, state, or municipal laws, regulations or codes?	Addresses at least one SAFETEA LU Planning Factor?	Listed in Regional Transportation Plans	HSTP Goals and Objectives Code	Revision #2
KAUAI : STATE - FHWA													
KS6.	Kaumualii Highway (Route 50) Improvements, Anonui St to Kipu Rd, Phase IB	Construction for widening of Kaumualii Highway, Anonui Street to vicinity of Kipu Road, from two to four lanes.	Y	N	L	L	N	N	N	Y	Y	G101-4, G201-2, G301-2, G401, G502	Defer and inflate CON in FY14 to \$18.4M in FY16. Delete advance construction reimbursement in FY15. Deferral and deletion are to financially constrain the STIP.
KS16.	Kuhio Highway (Route 56) Improvements, Hanamaulu to Kapaa, Phase I	Design and construct improvement alternative identified in the approved Environmental Impact Statement as the Preferred Alternative.	Y	N	L	L	N	N	N	Y	Y	G101-4, G201-2, G301-2, G401, G502	Defer all phases one year. No inflation applied since these are earmark monies.
KS24.	Puhi-Hanamaulu, Alternate Route	Conduct planning/environmental study to assess alternatives and impacts to developing an alternative route from Puhi to Hanamaulu.	Y	N	L	L	N	N	N	Y	Y	G101-4, G201-2, G301-2, G401, G502	Defer and inflate PLN in FY14 to \$4.325M in FY16 to financially constrain the STIP.
COUNTY OF KAUAI - FHWA													

DEPARTMENT OF TRANSPORTATION
STATEWIDE TRANSPORTATION IMPROVEMENT PROGRAM : FINANCIALLY CONSTRAINED
FFY 2011 THRU 2014 (FFY 2015-2016 Informative Only)

Click here to access the FFY 11-14(+2) STIP document: <http://hawaii.gov/dot/highways/STIP/110531%2011-14%20STIP%20Rev%20%232%20-2.pdf>

MODERNIZATION PROJECTS		Project Description	Congestion Management System Yes: Project identified through a Congestion Management System process No: Project did not result from a Congestion Management System process	Highway Safety Improvement Program Yes: Project identified through DOT's Highway Safety Improvement Program or County Safety Improvement Program No: Project did not result from DOT's Highway Safety Improvement Program or County Safety Improvement Program	Cost Participation High: Private industry funding has been secured Med: Private industry funding is anticipated Low: Does not include other financial involvement (i.e. private industry)	Project Stage High: Planning or Design has already been completed Med: Planning or Design is almost complete Low: The project has not yet begun	Traffic Signal Warrants Traffic signal project meets the criteria in the Traffic Signal Warrants	Gap Closure? Does this project close a gap or connect missing links in a route?	Mandated? Required by federal, state, or municipal laws, regulations or codes?	Addresses at least one SAFETEA LU Planning Factor?	Listed in Regional Transportation Plans	HSTP Goals and Objectives Code	Revision #2
KC19.	Kauai County Multi-Modal Transportation Plan	A multi-modal land transportation plan for the island of Kauai that considers the communities land transportation needs and priorities in a comprehensive approach that includes transit, bicycle, pedestrian, vehicle and freight modes of transportation. The regional land transportation network to be considered includes the County and State systems.	N	N	L	L	N	N	N	Y	N	G101-4, G201-2, G301-2, G401-2, G501-3	Delete \$400K of PLN funds since it was already obligated in FY2009. Delete project.
KC18.	Maluhia Road (Route 520) Improvements	Widen Maluhia Road frm the intersection of Ala Kinoiki Road to Kaumualii Hwy. Approx 2.6 miles. 12-ft traffic lanes and 6-ft shoulders including drainage improvements and replacement of an existing bridge. The section of Maluhia Road through the "tree tunnel" cannot be widened w/o disturbing the trees and therefore the development of a northbound or southbound lane outside of the "tunnel" will be developed.	Y	N	L	L	N	N	N	Y	N	G101-4, G201-2, G301-2, G401, G502	Delete \$40K of Planning funds in FY11 and \$500K of Design funds in FY13 since they were already obligated in a previous FY.
KC11.	Northerly Leg of the Western Bypass Road (Ala Kalanikaumaka (Route 522))	Construct new roadway. The project begins at Koloa Road and the completed section of the Ala Kalanikaumaka intersection, heading northeast and connecting to Maluhia Road at the intersection of Maluhia and Ala Kinoike.	Y	N	L	L	N	Y	N	Y	Y	G101-4, G201-2, G301-2, G401, G502	Updated total project cost to \$20M.

**DEPARTMENT OF TRANSPORTATION
STATEWIDE TRANSPORTATION IMPROVEMENT PROGRAM : FINANCIALLY CONSTRAINED
FFY 2011 THRU 2014 (FFY 2015-2016 Informative Only)**

Click here to access the FFY 11-14(+2) STIP document: <http://hawaii.gov/dot/highways/STIP/110531%2011-14%20STIP%20Rev%20%232%20-2.pdf>

ENHANCEMENT PROJECTS											
Transportation enhancement projects, such as: - bikeway projects - landscaping projects - pedestrian facilities projects		Project Description	Hawaii Statewide Enhancement Program Is the project classified as "Potentially Fundable" for use of Transportation Enhancement funds by the Hawaii Procedures for TE Projects?	Cost Participation High: Private industry funding has been secured Med: Private industry funding is anticipated Low: Does not include other financial involvement (i.e. private industry)	Project Stage High: Planning or Design has already been completed Med: Planning or Design is almost complete Low: The project has not yet begun	Gap Closure? Does this project close a gap or connect missing links in a route?	Mandated? Required by federal, state, or municipal laws, regulations or codes?	Addresses at least one SAFETEA-LU Planning Factor?	Listed in Regional Transportation Plans	HSTP Goals and Objectives Code	Revision #2
KAUAI : STATE - FHWA											
KS23.	National Recreational Trails Program - Kauai (DLNR)	A Federal-aid assistance program to help the State provide and maintain recreational trails for both motorized and non-motorized recreational use. Anticipated funding for Kauai program.	N	L	L	N	N	Y	N	G101-3, G201, G301-2, G401-2, G502	
COUNTY OF KAUAI - FHWA											
KC1.	Ahukini To Lydgate Park Bike/Pedestrian Path (Phase IV of the Lihue-Anahola Coastal Bike Path, Bike Plan HI, April '94)	Approximately 7 miles of 12 foot wide and 6 inch thick concrete bike/ped path. The project starts at the Ahukini Landing and ends at the S end of Lydgate Park.	Y	L	L	N	N	Y	N	G101-4, G201-2, G301-2, G401-2, G502	Defer and inflate DES. Still working on environmental clearances and EA will not be ready in 2011. Changed ROW to CON. This was a typo and is now being corrected.
KC8.	Kuna Bay to Anahola Bike/Pedestrian Path (Phase V of the Lihue-Anahola Coastal Bike Path, Bike Plan HI, April '94)	Approximately 3 miles of 12 foot wide, 6 inch thick concrete bike/ped path. The Project Starts at Kuna Bay (north end of Ph II) and ends at Anahola.	Y	L	L	N	N	Y	N	G101-4, G201-2, G301-2, G401-2, G502	
KC9.	Lydgate Park to Kapaa Bike/Pedestrian Path (Phase III of the Lihue-Anahola Coastal Bike Path, Bike Plan HI, April '94) Phases B & C	Construct 12 foot wide 6 inch thick concrete bike/ped path. Ph B - includes the N end of Papaloa Rd. and the balance starts at the N side of Waipouli Canal Br., continues along Kuhio Hwy. to Ala, Niulani, Keaka, Moanakai and Lihi Rds. Ph C - starts at the S side of a vacant lot N of Kauai Coast Resort at the Beachboy & continues to the N side of Waipouli Canal at Kuhio Hwy.	Y	L	H	N	Y	Y	N	G101-4, G201-2, G301-2, G401-2, G502	Advance Phase B CON from FY12 to FY11. Project is ready.

DEPARTMENT OF TRANSPORTATION
STATEWIDE TRANSPORTATION IMPROVEMENT PROGRAM : FINANCIALLY CONSTRAINED
FFY 2011 THRU 2014 (FFY 2015-2016 Informative Only)

Click here to access the FFY 11-14(+2) STIP document: <http://hawaii.gov/dot/highways/STIP/110531%2011-14%20STIP%20Rev%20%232%20-2.pdf>

ENHANCEMENT PROJECTS		Project Description	Hawaii Statewide Enhancement Program Is the project classified as "Potentially Fundable" for use of Transportation Enhancement funds by the Hawaii Procedures for TE Projects?	Cost Participation High: Private industry funding has been secured Med: Private industry funding is anticipated Low: Does not include other financial involvement (i.e. private industry)	Project Stage High: Planning or Design has already been completed Med: Planning or Design is almost complete Low: The project has not yet begun	Gap Closure? Does this project close a gap or connect missing links in a route?	Mandated? Required by federal, state, or municipal laws, regulations or codes?	Addresses at least one SAFETEA-LU Planning Factor?	Listed in Regional Transportation Plans	HSTP Goals and Objectives Code	Revision #2
KC10.	Nawiliwili to Ahukini Bike/Pedestrian Path (Phase VI of the Lihue-Anahola Coastal Bike Path, Bike Plan HI, April '94) Phases A & B	Approximately 8 miles of 12 foot wide, 6 inch thick concrete bike/ped path.	Y	L	L	N	N	Y	N	G101-4, G201-2, G301-2, G401-2, G502	Defer and inflate \$750K of DES in FY11 to \$780K in FY12. Still working on environmental clearances so EA will not be ready in FY11. Add \$200K of ROW in FY12. Only preliminary ROW funds were obligated in FY10 due to environmental permit issues.

DEPARTMENT OF TRANSPORTATION
STATEWIDE TRANSPORTATION IMPROVEMENT PROGRAM : FINANCIALLY CONSTRAINED
FFY 2011 THRU 2014 (FFY 2015-2016 Informative Only)

Click here to access the FFY 11-14(+2) STIP document: <http://hawaii.gov/dot/highways/STIP/110531%2011-14%20STIP%20Rev%20%232%20-2.pdf>

TRANSIT PROJECTS		Project Description	Maintains Existing System	Completes Multi-Phase Project	Enhances Hub-and-Spoke System	Enhances Safety and Security	New Transit Service	Local Match in Year 1 Budget	Local Match Possible in Years 2, 3 or 4 Budget	Addresses at least one SAFETEA-LU Planning Factor?	Listed in Regional Transportation Plans	HSTP Goals and Objectives Code	Revision #2
			Does it maintain and operate existing fixed route bus and complementary paratransit system?	Does it complete a multi-phase project that has started?	Does it enhance system performance through implementation of hub-and-spoke system?	Does it enhance safety/security of passengers and the system and enhances service quality level?							
	COUNTY OF KAUAI - FTA												
KC16.	Bus and Bus Facility	Purchase buses and operate bus transit facilities.	Y	Y	Y	Y	Y	Y	Y	Y	N	G101-3, G201-2, G301-2, G401	
KC17.	Rural Transportation Program	Operate public transit system.	Y	Y	Y	Y	Y	Y	Y	Y	N	G101-3, G201-2, G301-2, G401	
KC21.	State of Good Repair	<p>Purchase buses.</p> <p>The U.S. Department of Transportation's (DOT) Federal Transit Administration (FTA) provides discretionary funding for projects through Section 5309 Bus and Bus Facilities these program funds are in support of the State of Good Repair (SGR) Initiative. The SGR Initiative makes funds available to public transit providers to finance capital projects to replace, rehabilitate, and purchase buses and related equipment and to construct bus-related facilities, including programs of bus and bus-related projects for assistance to subrecipients that are public agencies, private companies engaged in public transportation, or private non-profit organizations. Additionally, the SGR Initiative makes funds available for Transit Asset Management systems, which is a systematic process of operating, maintaining, improving, and expanding physical assets effectively throughout their life cycles.</p>	Y	N	Y	Y	N	Y	N	Y	N	G101-3, G201-2, G301-2, G401	NEW project.

TRN 501

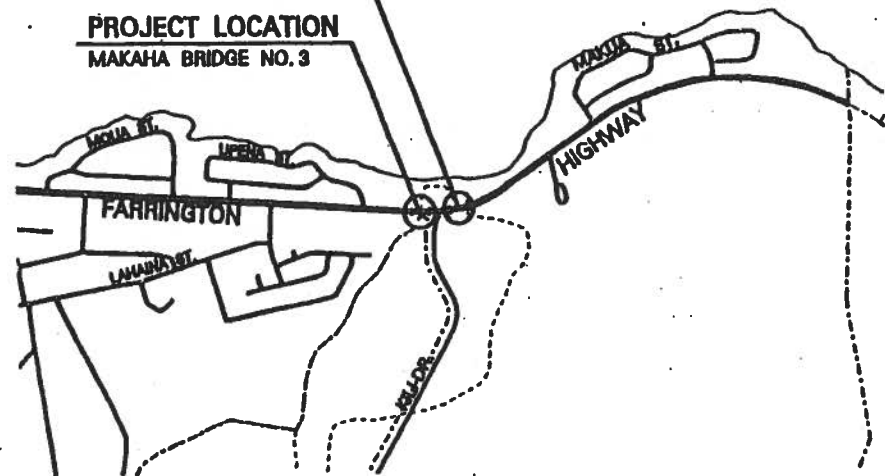
S301

PROJECT LOCATION

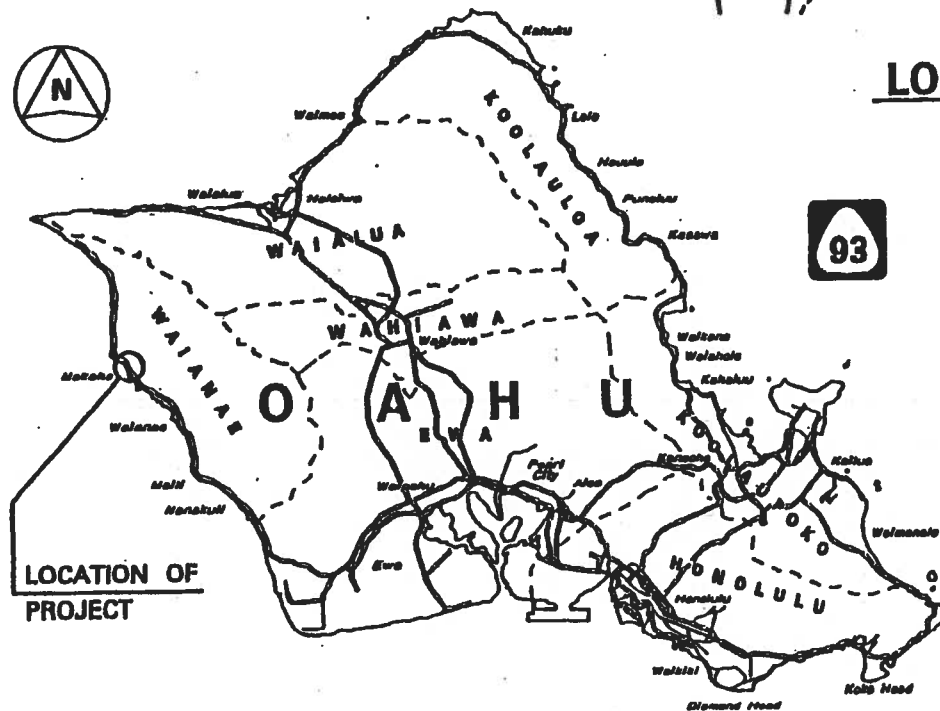
MAKAHA BRIDGE NO. 3A

PROJECT LOCATION

MAKAHA BRIDGE NO. 3



LOCATION PLAN



OS82 (added via FFY11-14 STIP Rev #2)

STATE OF HAWAII
DEPARTMENT OF TRANSPORTATION
HIGHWAYS DIVISION

FARRINGTON HIGHWAY

**REPLACEMENT OF MAKAHA BRIDGE NO. 3 AND
MAKAHA BRIDGE NO. 3A**

DISTRICT OF WAIANAE
ISLAND OF OAHU

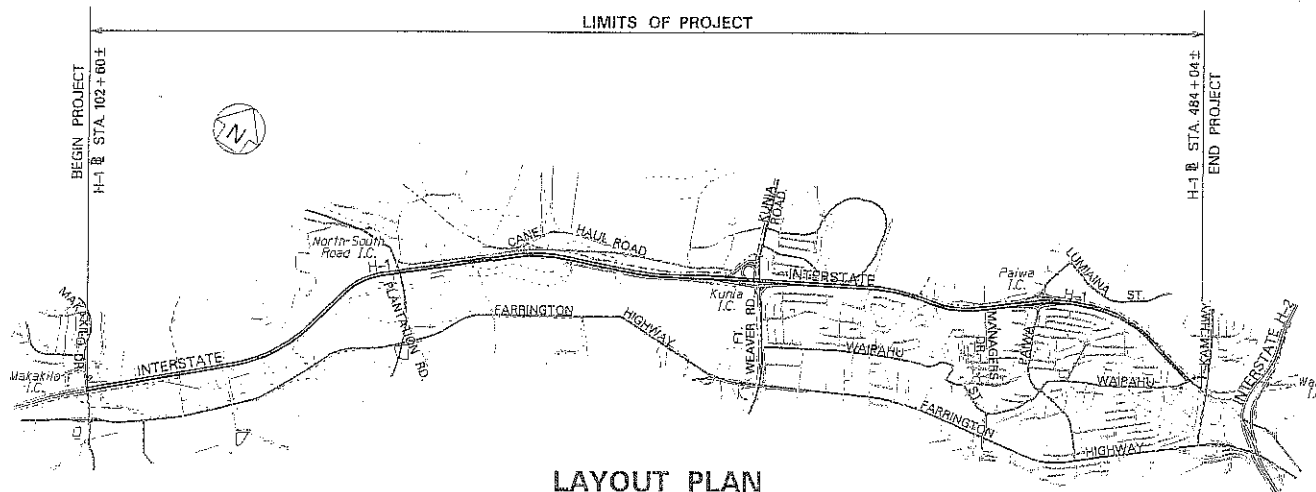
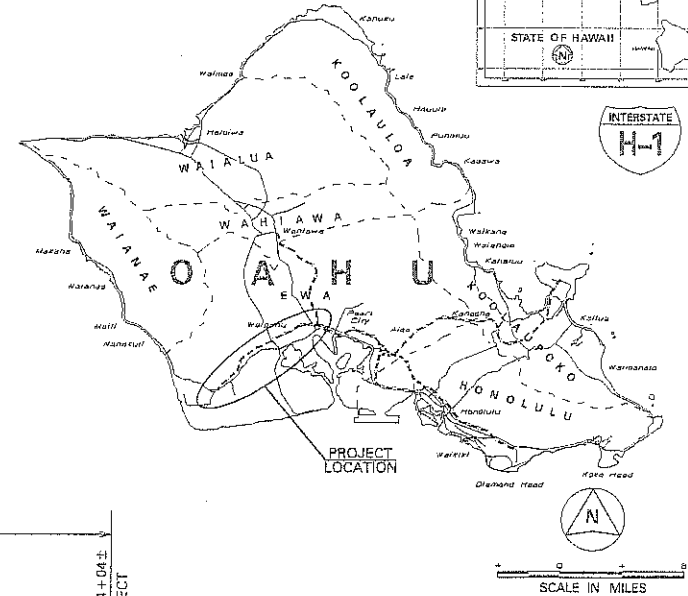
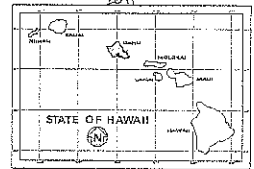
INDEX TO DRAWINGS	
SHEET NO.	DESCRIPTION
1	TITLE SHEET
2	STANDARD PLANS SUMMARY
3	GENERAL NOTES AND LEGEND
4 - 5	WATER POLLUTION AND EROSION CONTROL NOTES
6 - 36	ROADWAY PLANS

STATE OF HAWAII
DEPARTMENT OF TRANSPORTATION
HIGHWAYS DIVISION
HONOLULU, HAWAII

PLANS FOR
INTERSTATE ROUTE H-1
INSTALLATION OF ACCESS CONTROL
MAKAKILO INTERCHANGE TO VICINITY OF H-1/H-2 INTERCHANGE
FEDERAL-AID PROJECT NO. IM-H1-1(259)

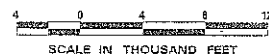
DISTRICT OF EWA
ISLAND OF OAHU

FED. ROAD DIST. NO.	STATE	FED. AID PROJ. NO.	FISCAL YEAR	SHEET NO.	TOTAL SHEETS
HAWAII	HAW.	IM-H1-1(259)	2010	1	36



LAYOUT PLAN

GROSS LENGTH OF PROJECT..... 7.20 MILES
NET LENGTH OF PROJECT..... 6.46 MILES



FEDERAL AID INTERSTATE PROJECTS PREVIOUSLY CONSTRUCTED OR UNDER CONSTRUCTION

MILE POST 1.11 TO MILE POST 8.31

DEPARTMENT OF TRANSPORTATION STATE OF HAWAII	
APPROVED:	
DIR. OF TRANSPORTATION	DATE

HWY-D
DESIGNED BY

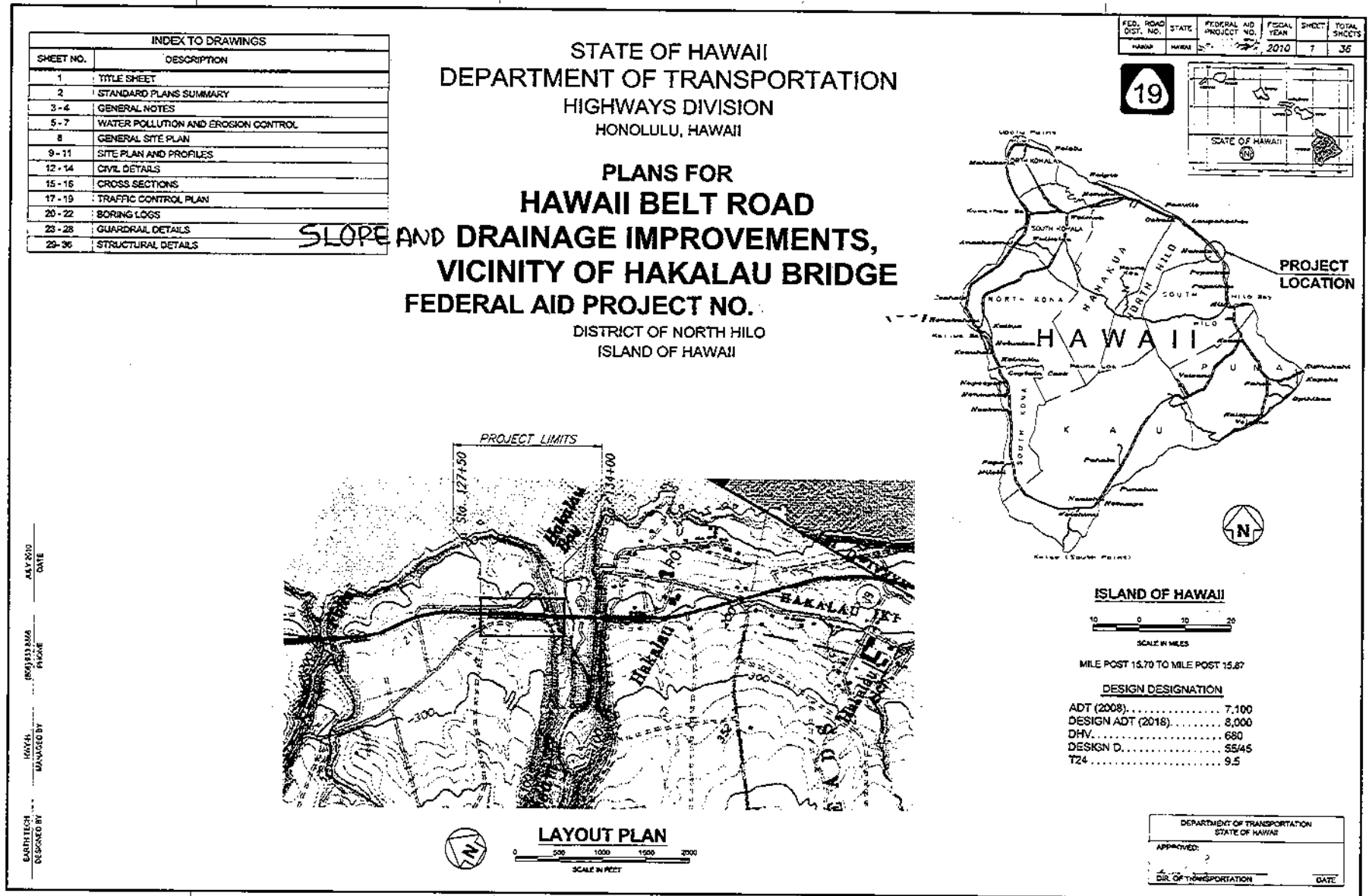
HWY-DD
MANAGED BY

892-7570
PHONE

SEPT 2009
DATE

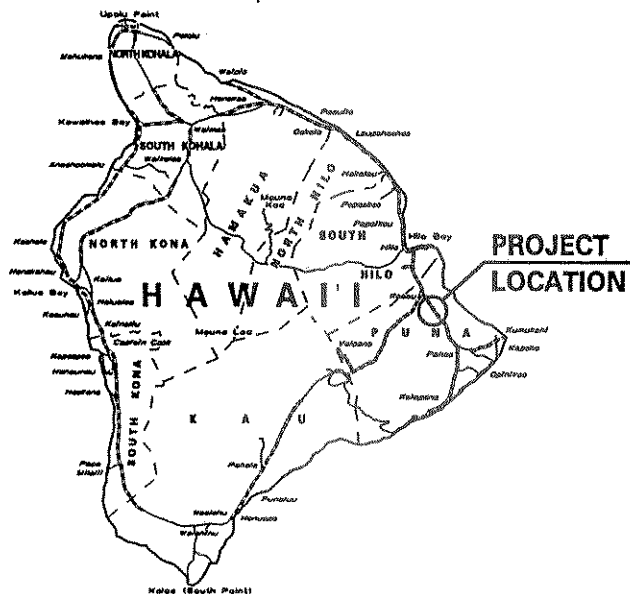
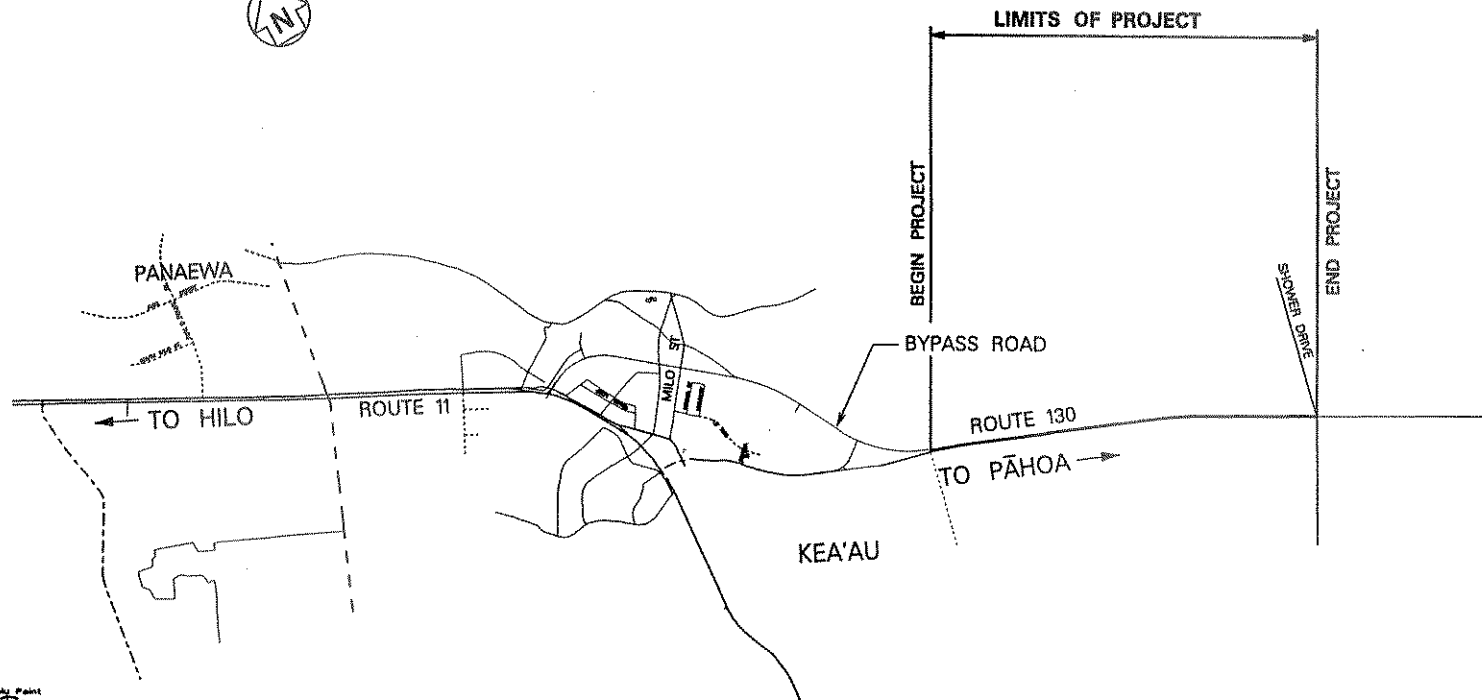
AP2 2011

HS40 (added via FFY11-14 STIP Rev #2)



TRN 511

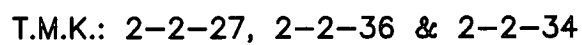
CPN T127



HS41 (added via FFY11-14 STIP Rev #2)

STATE OF HAWAII
DEPARTMENT OF TRANSPORTATION
HIGHWAYS DIVISION
KEAAU-PAHOA ROAD
SHOULDER LANE CONVERSION
KEAAU BYPASS ROAD to SHOWER DRIVE, HAWAII

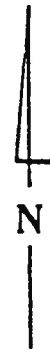
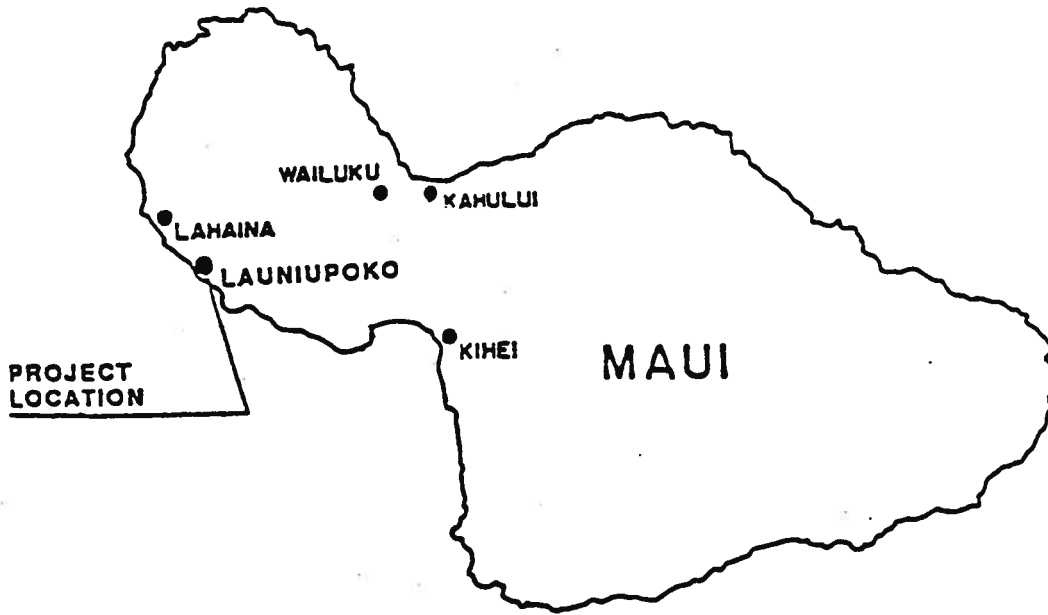
Island of Hawaii



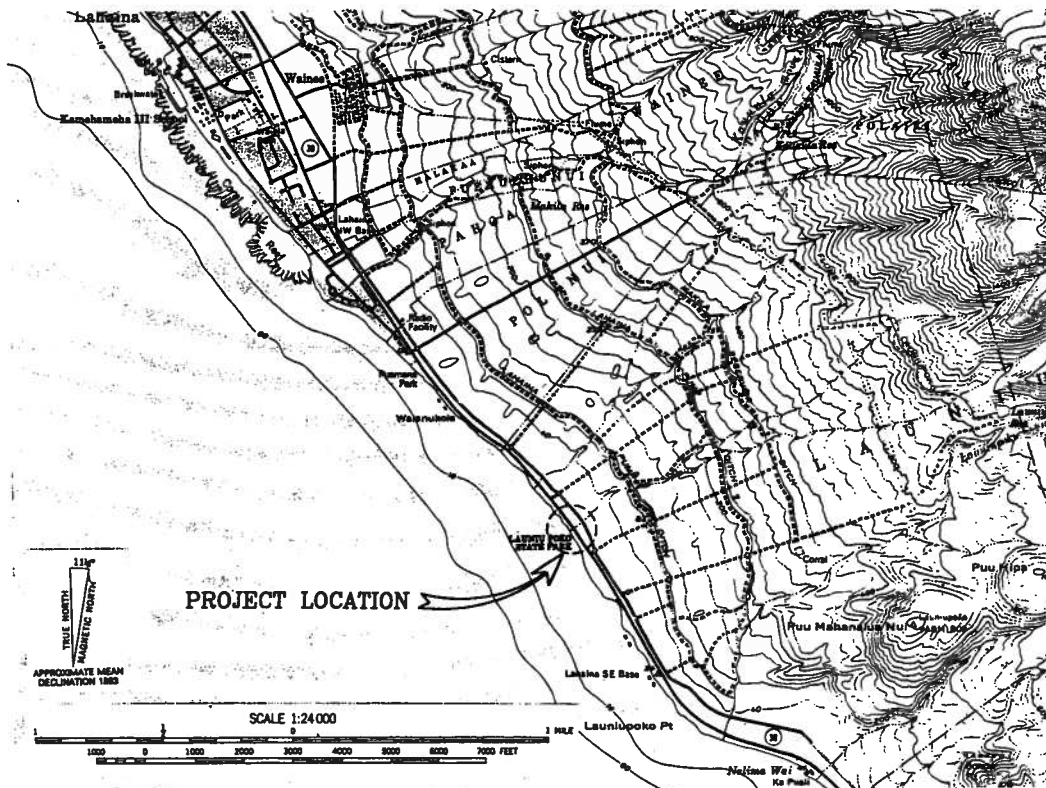
HC15 Manono Street (Route 2770) Roadway Improvements, Lanikaula Street to Kekuanaoa Street
(added via FFY11-14 STIP Rev #2)

TRN 531

V53



LOCATION MAP



VICINITY MAP

Honoapiilani Highway Rock Revetment at Launiupoko
Project No. ER-11(7)

MS34 Honoapiilani Highway (Route 30), Shoreline Protection at Launiupoko (added via FFY11-14
STIP Rev #2)

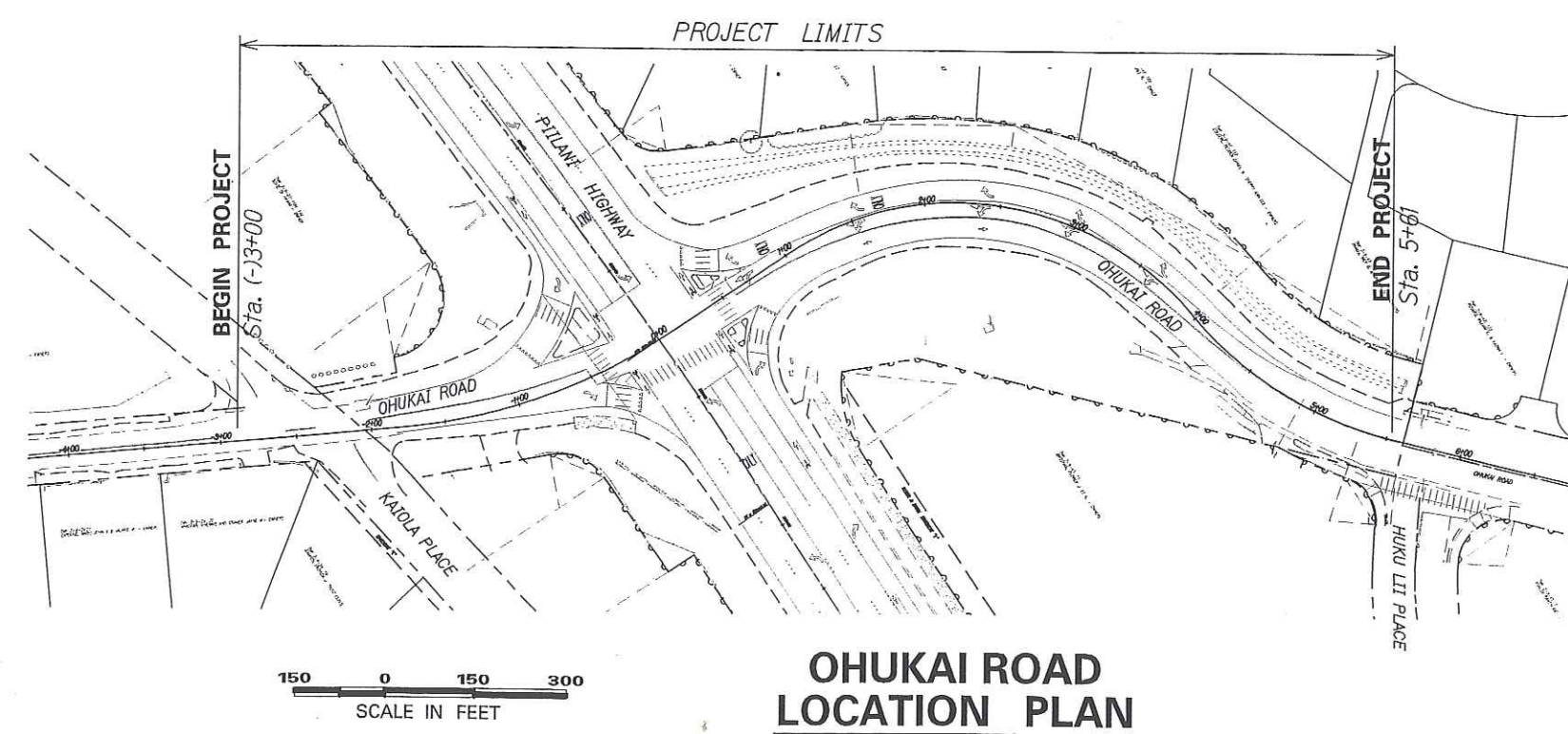
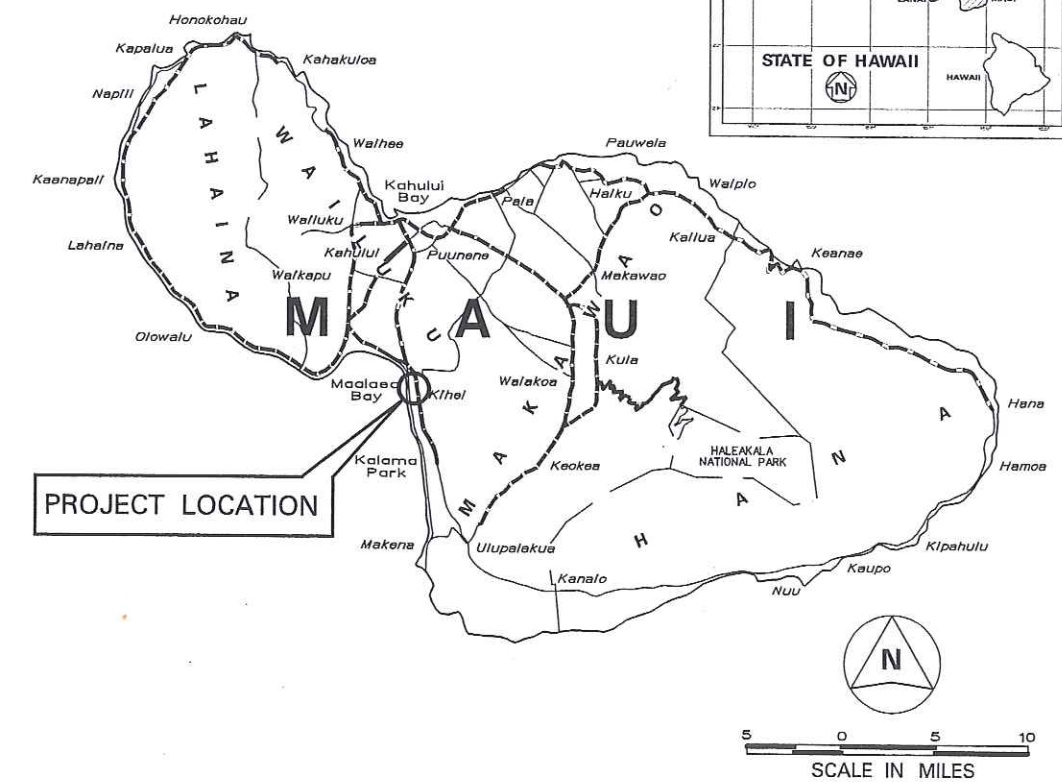
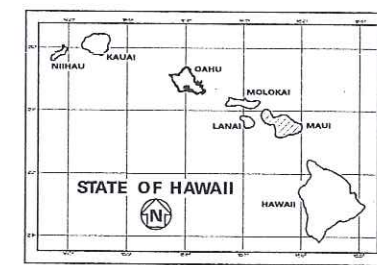
INDEX TO DRAWINGS	
SHEET NO.	DESCRIPTION
1	TITLE SHEET
2	STANDARD PLANS SUMMARY
3 - 15	GENERAL AND UTILITY NOTES
16	WATER POLLUTION AND EROSION CONTROL DETAILS
17	LEGEND AND ABBREVIATIONS
18	EXISTING CONDITION/SURVEY CONTROL PLAN
19	TYPICAL SECTIONS
20 - 21	ROADWAY CONSTRUCTION PLANS
22 - 23	GRADING AND DRAINAGE PLANS
24 - 26	TRAFFIC ISLAND PLAN
27	MISCELLANEOUS DETAILS
28 - 30	GUARDRAIL DETAILS
31	SIGNING PAVEMENT MARKINGS NOTES AND LEGEND
32 - 33	SIGNING AND PAVEMENT MARKING PLANS
34 - 38	TRAFFIC SIGNAL PLAN, NOTES, LEGEND AND MISC. DETAILS
39 - 44	TRAFFIC CONTROL NOTES AND LEGENDS AND PLANS
45 - 48	ELECTRICAL PLANS AND MISC. DETAILS
49 - 52	CROSS SECTIONS

STATE OF HAWAII
DEPARTMENT OF TRANSPORTATION
HIGHWAYS DIVISION
HONOLULU, HAWAII

PLANS FOR
**PIILANI HIGHWAY
TRAFFIC OPERATION
IMPROVEMENTS AT OHUKAI ROAD**
PROJECT NO. 31A-01-10
DISTRICTS OF WAILUKU AND MAKAWAO
ISLAND OF MAUI

MS35 (added via FFY11-14 STIP Rev #2)

FED. ROAD DIST. NO.	STATE	FED. AID PROJ. NO.	FISCAL YEAR	SHEET NO.	TOTAL SHEETS
HAWAII	HAW.	31A-01-10	2011	1	52



— FEDERAL AID PROJECTS PREVIOUSLY CONSTRUCTED OR UNDER CONSTRUCTION

MILE POST X TO MILE POST X

DEPARTMENT OF TRANSPORTATION STATE OF HAWAII	
APPROVED:	
DIR. OF TRANSPORTATION	DATE

PB AMERICAS, INC. DESIGNED BY
 HWY-M P. S. & E. BY
 873-3535 PHONE
 01/2011 DATE

