

MILILANI INTERCHANGE TRAFFIC STUDY

Mililani Mauka Elementary School

95-1111 Makaikai Street

May 22, 2013



**DEPARTMENT OF TRANSPORTATION
STATE OF HAWAII**

 Community Planning
and Engineering, Inc.

 **AUSTIN, TSUTSUMI & ASSOCIATES, INC.**
ENGINEERS, SURVEYORS • HONOLULU, HAWAII

MILILANI INTERCHANGE TRAFFIC STUDY

- Introduction
 - Welcome
 - Alvin Takeshita, Highways Administrator



MILILANI INTERCHANGE TRAFFIC STUDY

- Agenda
 - Introduction
 - Background
 - Study Objectives
 - Study Scope
 - Existing Conditions
 - Proposed Alternatives
 - Closing Remarks
 - Questions



MILILANI INTERCHANGE TRAFFIC STUDY

- **Background**

- 2009 – HDOT in partnership w/City & County DTS optimized traffic signals in the vicinity of Mililani Interchange. Traffic signals were modified to allow for more green time for morning traffic coming down from Mililani Mauka.
- 2010 – HDOT conducted a preliminary evaluation. Results were presented at a community meeting held on May 5, 2010.
- 2011 – Act 164/11 allocated funds to conduct a detailed study.
- 2012 – HDOT procured a consultant, Community Planning & Engineering to conduct the study.

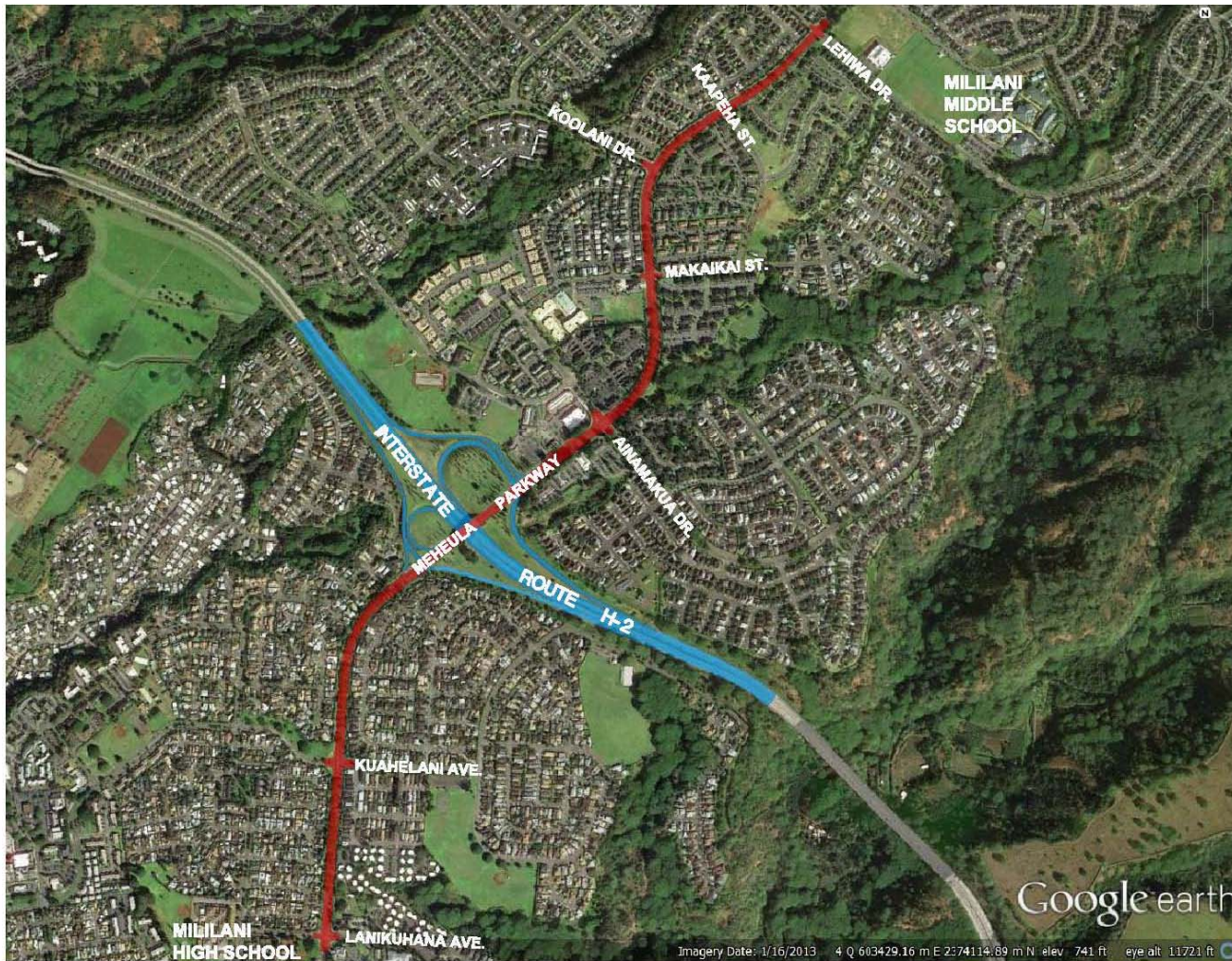


MILILANI INTERCHANGE TRAFFIC STUDY

- **Study Schedule**

- **November 2012 – Traffic Data Collection**
- **May 2013 – First Community Meeting**
- **July 2013 – Draft Study Completed**
- **July/August 2013 – Second Community Meeting**
- **November 2013 – Final Study Completed**

MILILANI INTERCHANGE TRAFFIC STUDY



Study Area



MILILANI INTERCHANGE TRAFFIC STUDY

- **Study Objectives**

To evaluate the feasibility of alternatives to reduce traffic congestion at the Mililani Interchange through detailed traffic analyses and cost estimates.

- **Community Meeting Objective**

To inform the community on the purpose and status of the traffic study and to gather input and feedback from the community.



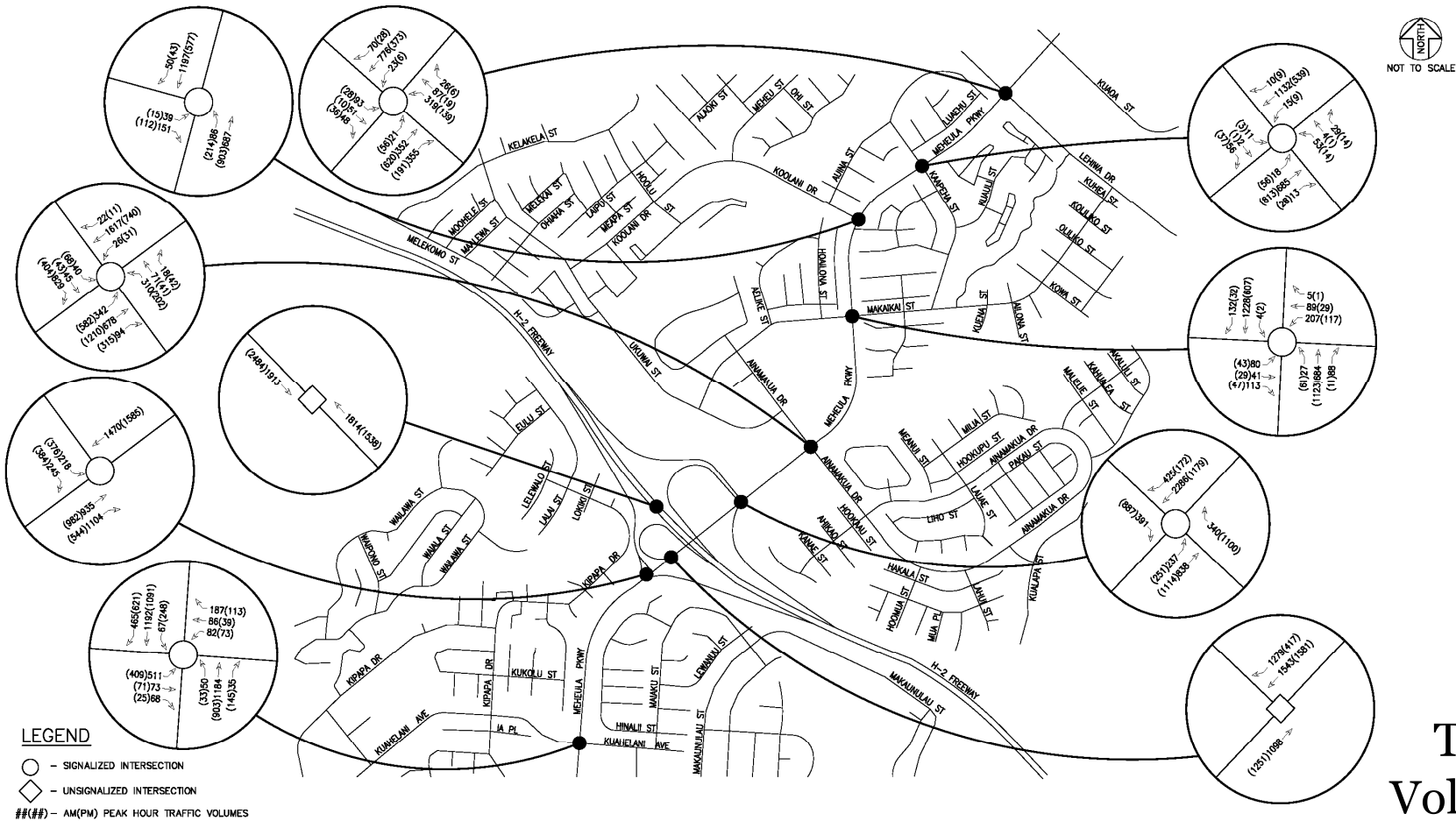
MILILANI INTERCHANGE TRAFFIC STUDY

- **Study Scope**
 - Collect and Review Traffic Data
 - Conduct Field Investigations
 - Analyze Existing Traffic Conditions
 - Develop Alternatives
 - Develop Estimates of Construction Cost
 - Prepare Study

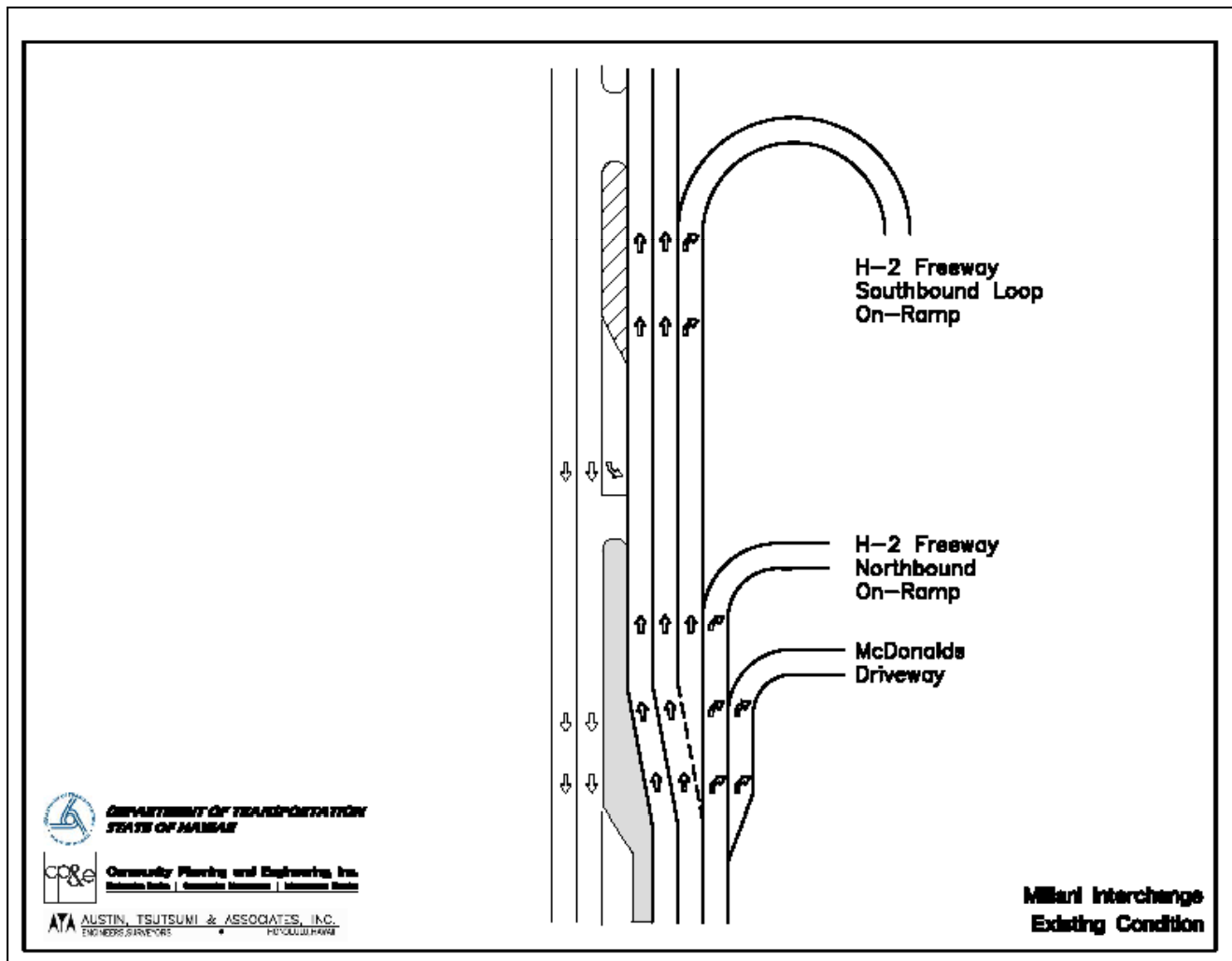
MILILANI INTERCHANGE TRAFFIC STUDY

- **Existing Condition**
 - ATA Conducted traffic Counts on November 8, 2012 and November 15, 2012
 - Traffic congestion was observed for the morning rush hour in the westbound direction of Meheula Parkway
 - Traffic generally operated adequately along Meheula Parkway during the afternoon rush hour

MILILANI INTERCHANGE TRAFFIC STUDY



MILILANI INTERCHANGE TRAFFIC STUDY



Existing
Condition

MILILANI INTERCHANGE TRAFFIC STUDY

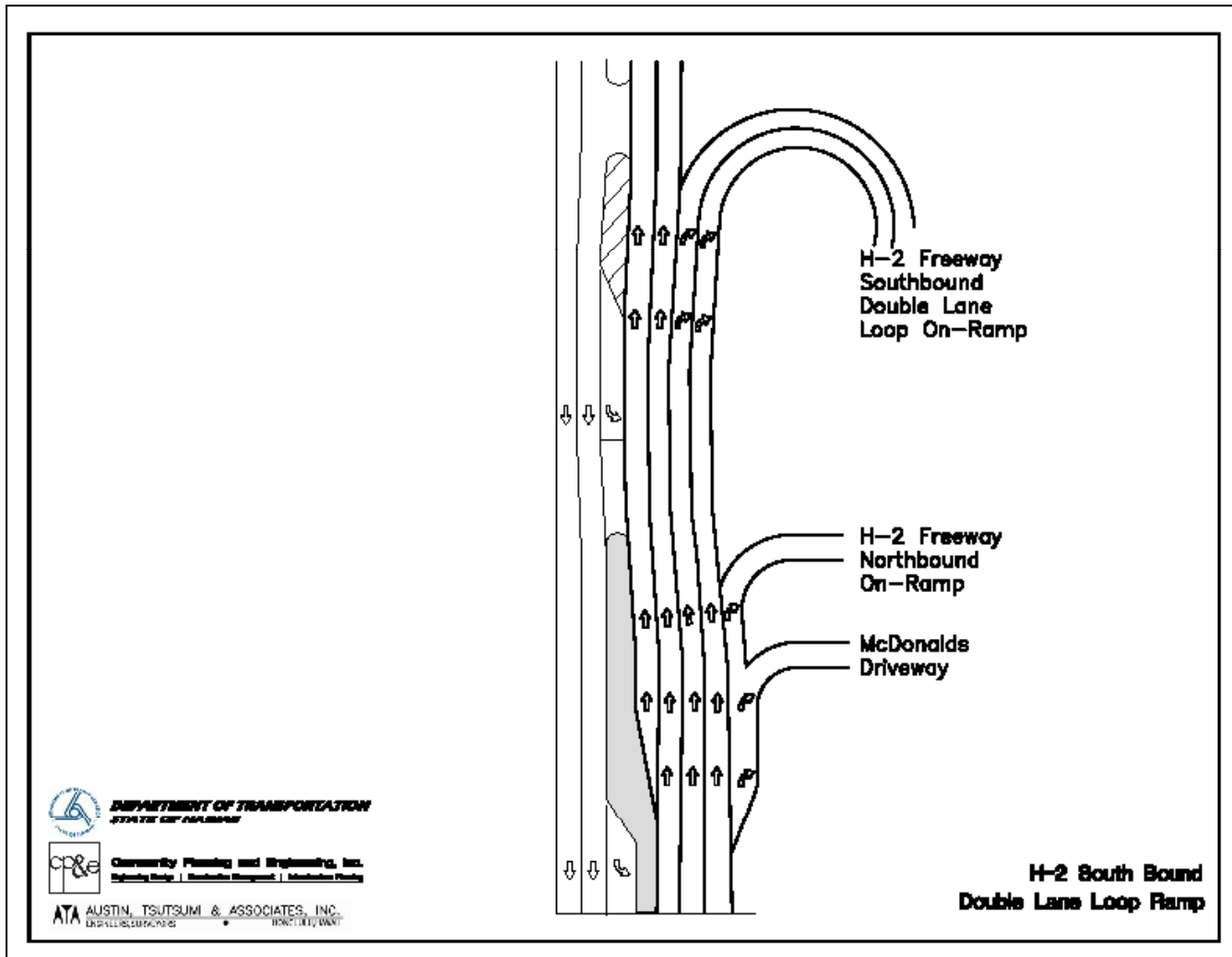
- Proposed Study Alternatives
 - Signal Optimization
 - Double Loop On-Ramp
 - Left Turn
 - Consideration and investigation will be performed for any additional alternatives



MILILANI INTERCHANGE TRAFFIC STUDY

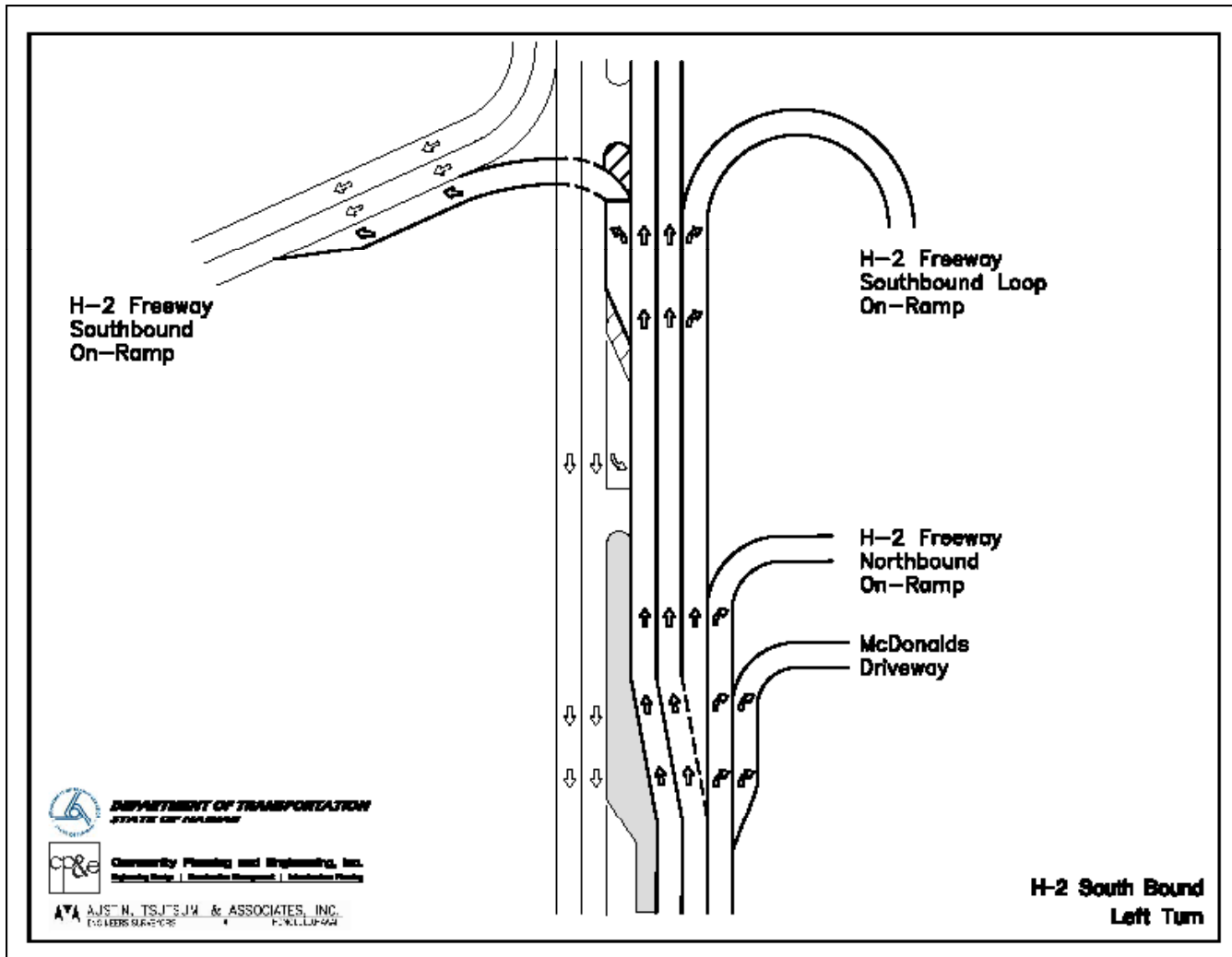
- **Signal Optimization**
 - 2009 - HDOT in partnership w/City & County DTS optimized traffic signals in the vicinity of Mililani Interchange.
 - April 2013 – ATA performed an analysis of the traffic signal timing in the vicinity of the Mililani Interchange.

MILILANI INTERCHANGE TRAFFIC STUDY



Double Loop
On-Ramp

MILILANI INTERCHANGE TRAFFIC STUDY



Left Turn



MILILANI INTERCHANGE TRAFFIC STUDY

- Closing Remarks
 - Next Community Meeting
 - Point of Contact for Study
 - Reid Tokuhara
 - Email: reid.tokuhara@hawaii.gov



MILILANI INTERCHANGE TRAFFIC STUDY

Questions?

MILILANI INTERCHANGE TRAFFIC STUDY

MAHALO!