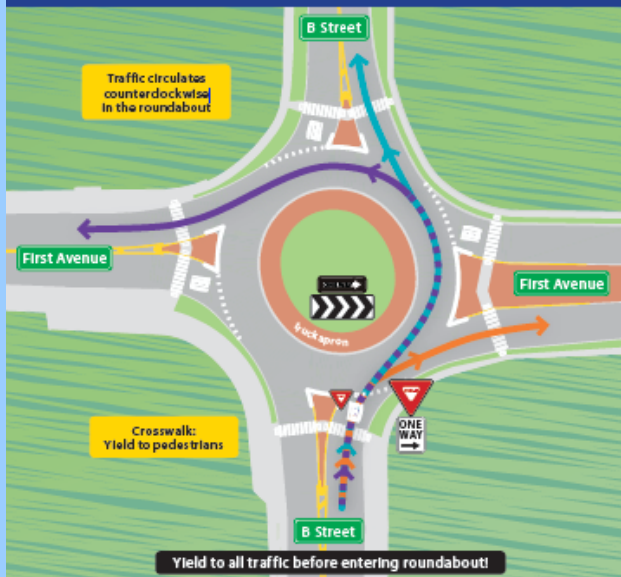


Rules for Driving Roundabouts

Driving a one-lane roundabout



Steps for driving a roundabout:

1. Slow down. Obey traffic signs.
2. Yield to pedestrians and bicyclists as you approach.
3. Yield to traffic on your left already in the roundabout.
4. Enter the roundabout when there is a safe gap in traffic.
5. Keep your speed low within the roundabout.
6. As you approach your exit, turn on your right turn signal.
7. Yield to pedestrians and bicycles as you exit.

Additional Safety Tips:

- * Emergency Vehicles
 - ⇒ Always yield to emergency vehicles.
 - ⇒ If you have not entered the roundabout, pull over and allow emergency vehicles to pass.
 - ⇒ If you have entered the roundabout, continue to your exit, then pull over and allow the emergency vehicle to pass.
 - ⇒ Avoid stopping in the roundabout.
- * Truck Aprons are for the rear wheels of large trucks to use when turning. Truck aprons are not to be used by cars, SUVs or pickup trucks.
- * Bicyclist should be treated as a vehicle. Never try to pass a bicyclist in a roundabout.

Final Condition



- Fully functional single lane roundabout
- Accessible walkways for pedestrians and bicyclists
- New driveway for Pahoa Marketplace directly from Kea'au-Pāhoa Road
- Striping modifications at Pahoa Village Road/Kahakai Boulevard
- Pahoa Bypass Road/Kahakai Boulevard intersection restored back to pre-construction conditions

Punattraffic.com

Punattraffic.com offers information on driving conditions along Route 130. A network of traffic cams have been deployed and are available for online viewing. Images are updated approximately every 5 minutes. This site will also have information on traffic incidents and weather alerts. Users can also access Social Media feeds from supporting transportation and emergency management agencies.

Please direct questions or comments to:

Department of Transportation
Hawaii District Office
50 Makaala Street
Hilo, Hawaii 96720
(808) 933-8866



Kea'au-Pāhoa Road Intersection Improvements at Old Government Road FAP No. HSIP-0130(031)



Source: AECOM, photo taken in December 2011

April 2016

What is a Roundabout?

A roundabout is a type of circular intersection with yield control of entering traffic, islands on the approaches, and appropriate roadway curvature to reduce vehicle speeds.

Advantages:

- Improved safety
- Reduced speeds
- Higher capacity than traditional signalized intersections
- Reduced traffic congestion
- Reduced pollution and fuel use
- Complements other common community values
- Saves money

Disadvantages:

- Many users may not be familiar with roundabouts
- Pedestrians with vision impairments may have difficulty navigating roundabouts
- All approaches have equal priority which can slow traffic flow on higher volume approaches
- Cannot provide explicit priority to specific users (e.g., emergency vehicles, pedestrians)
- Slow operating speeds in roundabouts affect the function of arterial highways intended to transport goods, services and people.

Construction Schedule

- Final Construction Phase — April/May 2016 (dates subject to change)
 - ◇ Phase A— April 11 to April 24
 - ◇ Phase B— April 25 to May 8
 - ◇ Phase C— May 8 to May 20
- Project Completion – Summer 2016

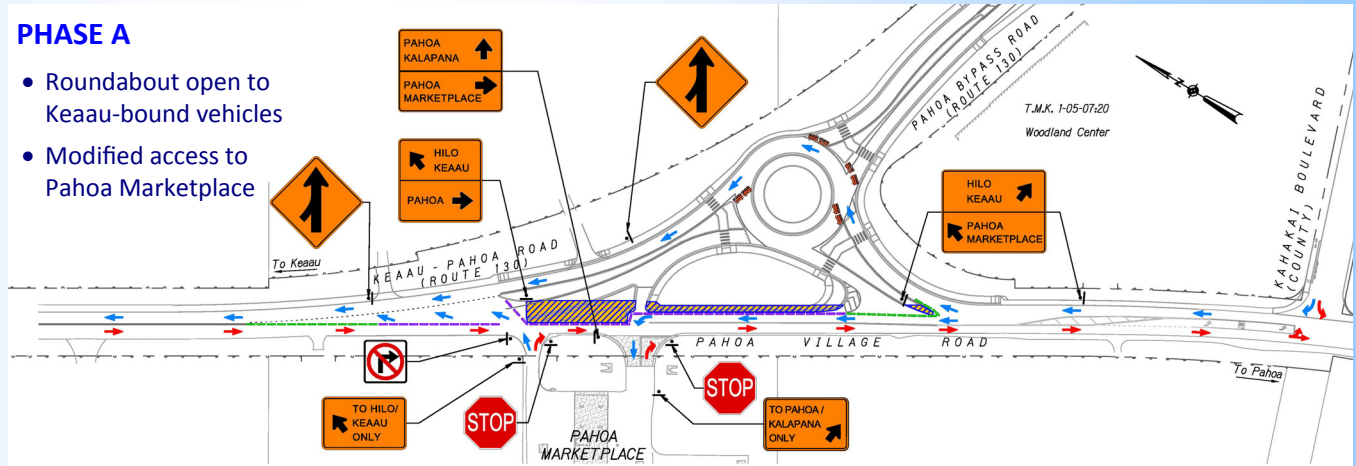
NOTICE

Be advised that traffic patterns will be altered in the final phases of construction. The roundabout is anticipated to be partially opened to northbound traffic on April 11, 2016. Southbound traffic is scheduled to be routed to the roundabout on April 25, 2016.

Kea'au-Pāhoa Roundabout - Detour Traffic Pattern: April/May 2016

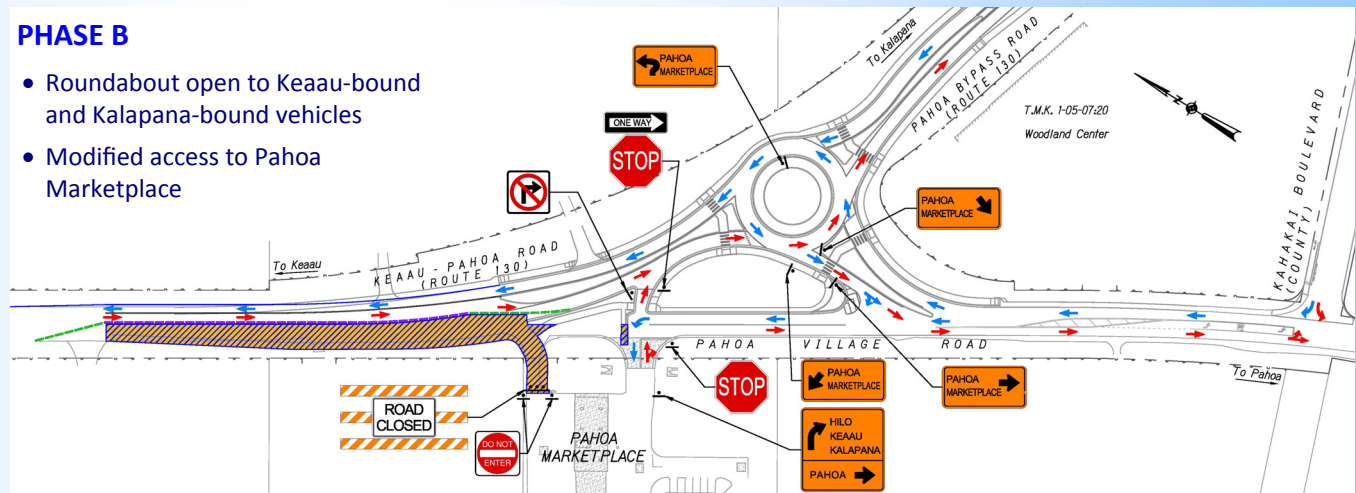
PHASE A

- Roundabout open to Keaau-bound vehicles
- Modified access to Pahoia Marketplace



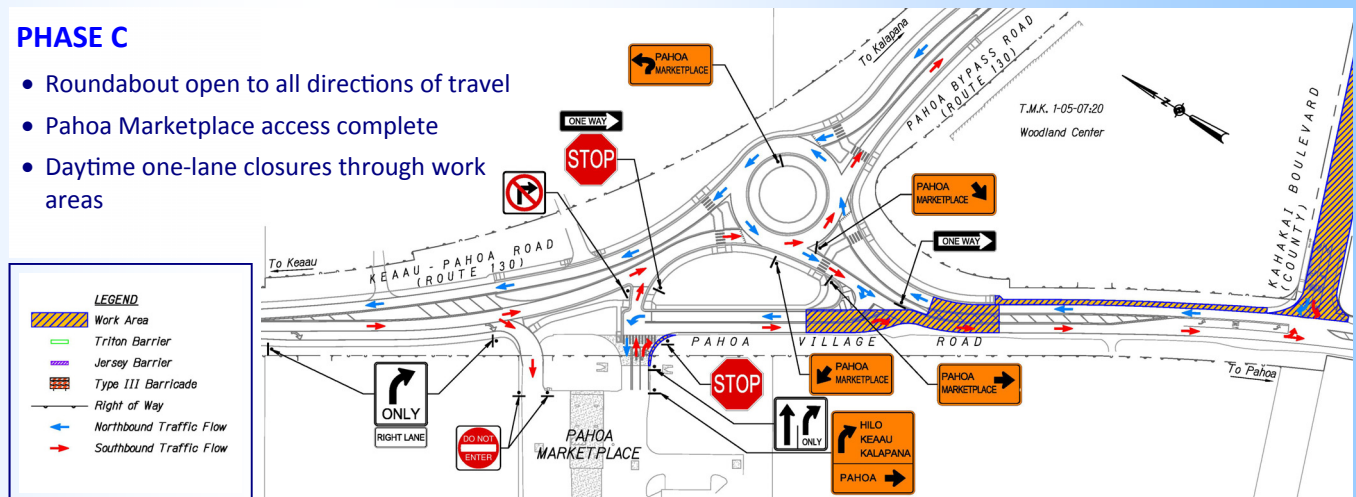
PHASE B

- Roundabout open to Keaau-bound and Kalapana-bound vehicles
- Modified access to Pahoia Marketplace



PHASE C

- Roundabout open to all directions of travel
- Pahoia Marketplace access complete
- Daytime one-lane closures through work areas



LEGEND

- Work Area
- Triton Barrier
- Jersey Barrier
- Type III Barricade
- Right of Way
- Northbound Traffic Flow
- Southbound Traffic Flow