

Disadvantaged Business Enterprise

FFY 2021 – 2023  
Federal Transit Administration  
Goal & Methodology

(Revised December 2021)

## Introduction

The Hawaii Department of Transportation (HDOT) hereby submits its revised proposed annual, overall Disadvantaged Business Enterprise (DBE) goal for federal fiscal years 2021 through 2023 to the Federal Transit Administration (FTA) pursuant to [49 CFR Part 26, section 26.45](#).

Based on the results of a DBE Availability and Disparity Study prepared in December 2019 by Keen Independent Research (Keen Independent) and anticipating additional projects totaling approximately \$44,789,929.00, HDOT proposes a revised goal of 2.92% for the DBE goal for FFYs 2021 through 2023 for FTA-funded contracts. The overall goal is based on demonstrable evidence of ready, willing and able DBEs relative to all businesses currently ready, willing and able to participate on HDOT's FTA-assisted contracts.

The 2019 Availability and Disparity Study report provided information to HDOT as it considered (1) its overall DBE goal for FFY 2021 through FFY 2023 for FTA-funded contracts, and (2) its projection of the portion of its overall DBE goal to be achieved through neutral means. HDOT estimates all of the overall goal can be achieved through race- and gender-neutral participation on HDOT FTA-assisted projects.

HDOT's original DBE overall goal was 14.63% with a 0%/14.63% race conscious / race neutral split respectively. HDOT is anticipating approximately \$44,789,929.00 worth of projects during this time period. However, only a limited number of subcontracting opportunities have been identified for those projects. This coupled with the large number of anticipated projects is cause for a much smaller than anticipated DBE goal.

HDOT used previous data from the Master Availability Database (Attachment 1) from the Keen Independent Study, the USDOT Weighted Base Figure Worksheet (Attachment 2), and the FTA Disadvantaged Business Enterprise: Goal Setting Methodology and Consultation May 2018 power point (Attachment 3) to assist with the calculations to arrive at a revised overall DBE goal of 2.92% - Calculation of Relative Availability (Attachment 4).

HDOT documented its public outreach and interactive exchanges with its initial submission.

Here is an overview of HDOT's public outreach and interactive exchanges:

- Public Participation — 49 CFR Section 26.45(g) and 26.15(b)(1) HDOT and Keen Independent implemented an extensive public participation process as part of the 2019 Availability and Disparity Study.
  - Opportunity to Comment. During the Availability and Disparity Study, HDOT and the study team provided substantial opportunities for the public to provide information that might contribute to the Study's findings. These activities included:
    - An External Stakeholder Group that met with HDOT and the study team at key junctures of the study process.
    - A study website that posted information from the beginning of the study.
    - A telephone hotline and dedicated email address for anyone wishing to

- comment.
  - Opportunities for company owners and managers to provide information about their businesses and any perceived barriers in the marketplace. Keen Independent reached thousands of businesses through surveys conducted in 2018.
  - In-depth personal interviews and focus groups with business owners, trade associations and others throughout the state.
- In July 2019, HDOT hosted 5 public meetings regarding the proposed methodology and its overall DBE goal calculation. DBEs and non-DBEs attended and were provided an opportunity to provide comments and feedback on the Availability and Disparity Study Report and the proposed DBE goal.
  - Public Comment Process for the Draft 2019 Availability and Disparity Study Report and Proposed HDOT DBE Goal. Before finalizing the Availability and Disparity Study report, Keen Independent published a draft report for public comment. The study team distributed the draft report and HDOT published its overall DBE goal in early February 2020. The public was able to provide input through the following means:
    - a. In person or via video at a February 24, 2020 public meeting;
    - b. Online at [www.keenindependent.com/hdotdisparitystudy2019](http://www.keenindependent.com/hdotdisparitystudy2019);
    - c. Via email at [HDOTdisparitystudy2019@keenindependent.com](mailto:HDOTdisparitystudy2019@keenindependent.com); or
    - d. Through regular mail to HDOT Office of Civil Rights, 200 Rodgers Boulevard, Honolulu, HI 96819.

Through these methods, Keen Independent reviewed input from more than 190 businesses and other groups across Hawaii, which is summarized in the 2019 Availability and Disparity Study.

### **Small Business Program**

HDOT was granted approval by FHWA in May 2021 to implement a pilot Small Business Enterprise (SBE) Program (for one year) through which the Department will encourage small businesses to become certified and participate in HDOT contracting opportunities. For the SBE Program, construction contracts shall be solicited and procured through invitation for bids process.

The SBE contract goal setting process will mirror the current DBE contract goal setting process by establishing a contract goal based on potential subcontracting opportunities and the total scope of the project. The Office of Civil Rights (OCR) has created the SBE Confirmation and Commitment Agreement Form and Contract Goal Verification and Summary of Good Faith Efforts Form to better capture the participation SBEs will be providing. OCR has created SBE Requirements that parallel DBE Requirements, and this alignment will ensure that the SBE Program meets all federal requirements. The SBE Requirements are part of the solicitation and become part of the contract.

OCR has provided training to HDOT staff on the SBE Program and the updated SBE forms. HDOT has hosted an informational session for SBEs regarding the SBE Program to notify them of the changes and how the SBE Program works.

### **Relevant Geographic Market Area and Type of Work**

HDOT is using data from its 2019 Availability and Disparity Study to determine Relevant Geographic Market Area and Types of Work: Based on analysis of FTA-funded contracts for FFY 2021-2023, HDOT determined that Hawaii should be selected as the relevant geographic market area.

- About 100% of HDOT FTA-funded contract dollars from July 2011 through June 2016 went to firms with locations in Hawaii. Therefore, the availability analysis examined firms with locations in Hawaii.
- Keen Independent also examined the types of work involved in FTA-funded contracts from July 2011 through July 2016. There were 31 types of work that accounted for about 93% of FTA-funded contract dollars. The availability analysis focused on firms performing these 31 types of work.

### **STEP 1 – Availability Analysis**

Availability is expressed as the percentage of the associated contracting dollars that one might expect DBEs to receive based on various factors including the type of work involved, the location of the work and the size of the contract or subcontract, and then dollar-weighting results to prepare an overall availability estimate.

HDOT's availability analysis determined the percentage of FTA-funded contracts from FFY 2021-2023 that might go to current or potential DBEs if they had the same chance of winning that work as any other available firm, after accounting for the type, size and location of those prime contracts and subcontracts. HDOT used a dollar-weighted approach to determine this overall availability estimate. Based on this analysis, it is expected that current and potential DBEs will receive 2.92% of FTA-funded transportation contracts let by HDOT for FFY 2021-2023.

Master Availability Database. HDOT used a master availability database (current and potential DBEs and non-DBEs), developed by Keen Independent for the 2019 Availability and Disparity Study. Keen Independent developed it by contacting thousands of firms to collect information about availability for HDOT contracts. The firms contacted for the database came from sources including, but not limited to:

- Companies that had previously identified themselves to HDOT as interested in learning about future work by being prequalified for certain types of work or being on bidding lists; and
- Businesses that Dun & Bradstreet (D&B) identified in certain transportation contracting-related sub-industries in Hawaii (D&B's Hoover's business establishment database). (D&B's Hoover's database is accepted as the most comprehensive and complete source of business listings in the nation.)



Keen Independent completed surveys with 1,101 Hawaii businesses. After consolidating duplicate responses and removing companies that are no longer in business, not-for-profit, unable to perform transportation-related work or uninterested in discussing availability for HDOT work, the final database contains 304 businesses, of which 174 (or 57%) were minority- or women-owned (MBE or WBE).

Dollar-Weighted Availability. For each of the availability analyses HDOT developed dollar-weighted availability benchmarks. This approach is consistent with USDOT’s “Tips for Goal-Setting in the Disadvantaged Business Enterprise (DBE) Program.”

To calculate dollar-weighted availability, HDOT determined the number of DBEs and the total number of firms available for each anticipated FTA-funded contract for FFY 2021-2023.

HDOT then dollar-weighted the availability results for each prime contract and subcontract based on the dollars of that prime contract or subcontract relative to the total dollars of anticipated FTA-funded contracts for FFY 2021-2023.

Dollar-weighted availability is much more precise than a simple “head count” of businesses because it considers the following factors regarding available firms: (1) qualifications and interest in performing prime contracts and/or subcontracts, (2) type of work performed, (3) location of contracting opportunity, and (4) size of the contract or subcontract. Below presents an example of an availability calculation. Availability calculations were first done for minority- and women-owned firms (MBE/WBEs) and then refined to show results for current and potential DBEs.

#### **Example of an Availability Calculation for an HDOT Subcontract**

One of the subcontracts examined was for electrical work (\$98,750) on an HDOT 2011 Federal Transit Administration-funded contract. To determine the number of MBE/WBEs and majority-owned firms available for that subcontract, the study team identified businesses in the availability database that:

- a. Were in business in 2011;
- b. Indicated that they performed electrical work on transportation-related projects;
- c. Reported working or bidding on subcontracts in Hawaii in the past seven years;
- d. Reported bidding on work of similar or greater size in the past seven years;
- e. Reported ability to perform work on Molokai; and
- f. Reported qualifications and interest in working as a subcontractor on local government transportation projects.

There were 27 businesses in the availability database that met those criteria. Of those businesses, 17 were MBEs or WBEs. Therefore, MBE/WBE availability for the subcontract was 63% (i.e.,  $17/27 = 63.0\%$ ).

The weight applied to this contract was  $\$98,750 \div \$32 \text{ million} = 0.31\%$  (equal to its share of total FTA-funded contract dollars for HDOT contracts).

Keen Independent repeated this process for each prime contract and subcontract.

*Source: Keen Independent availability analysis*

Potential and Certified DBE Availability Adjustments. To determine the DBE base figure, which focuses on availability of currently certified DBEs and firms that could be certified as DBEs, HDOT did not count any MBE or WBE firms as potential DBEs that appear to be ineligible for certification. There were two groups of MBE/WBEs that did not count as potential DBEs when calculating the base figure:

- MBE/WBEs that in recent years graduated from the DBE Program or had applied for DBE certification in Hawaii but were denied.
- MBE/WBEs that reported annual revenue in the availability surveys that exceeded the revenue limits for DBE certification for their sub-industry over the most recent three years (at the time of the 2018 survey).
- MBE/WBEs that indicated in follow-up interviews that they were not eligible or not interested in DBE certification (interviews performed in the Availability and Disparity Study).

## **STEP 2 – Base Figure Adjustment**

In the base figure analysis, firms considered as DBEs were those businesses that were DBE-certified or appeared that they could be DBE-certified based on revenue criteria described in federal regulations including 49 CFR Section 26.65.

Summary of Approaches for Making Step 2 Adjustments. Quantification of potential downward or upward step 2 adjustments is summarized below.

### **1. Current Capacity of DBEs to Perform Work, as Measured by the Volume of Work DBEs Have Performed in Recent Years.**

Analysis of this factor might indicate a downward step 2 adjustment if HDOT analyzed its estimates of past DBE participation from FFY 2011 through FFY 2016. Based on Keen Independent's analysis, the median DBE participation on FTA-funded contracts was 0.11% for fiscal years 2011–2016.

FY 2013: 0.00%, FY 2014: 0.00%, FY 2015: 0.11%, FY 2016: 0.71%, FY 2012: 1.39%.

*NOTE: Fiscal years of Past DBE Participation on HDOT FTA-funded Contracts FY 2012- 2016 are arranged to illustrate that FY 2015: 0.11% is the median number.*

USDOT “Tips for Goal-Setting” suggests taking one-half of the difference between the base figure and evidence of current capacity as one approach to calculate the step 2 adjustment for that factor.

The difference between the 2.92% base figure and 0.11% DBE participation is 2.81 percentage points ( $2.92\% - 0.11\% = 2.81\%$ ). One-half of this difference is a downward adjustment of 1.41 percentage points ( $2.81\% \div 2 = 1.41\%$ ). The goal would then be calculated as follows:  $2.92\% - 1.41\% = 1.51\%$ .

The table below illustrates downward and upward adjustments options for HDOT

Step 2 adjustment component		Value	Explanation
<b>Lower range of overall DBE goal</b>			
Base figure		2.92 %	From base figure analysis
Evidence of current capacity	-	0.11	Past DBE participation (Keen Independent)
Difference		2.81 %	
	÷	2	Reduce by one-half
Adjustment		1.41 %	Downward adjustment for current capacity
Base figure		2.92 %	From base figure analysis
Adjustment for current capacity	-	1.41	Downward step 2 adjustment
<b>Overall DBE goal</b>		<b>1.51 %</b>	Lower range of DBE goal
<b>Upper range of overall DBE goal</b>			
Base figure		2.92 %	From base figure analysis
Adjustment for "but for" factors	+	13.48	"But for" step 2 adjustment for business ownership (As per the Keen Independent for the 2019 Availability and Disparity Study)
<b>Overall DBE goal</b>		<b>16.40%</b>	Upper range of DBE goal

## 2. Information Related to Employment, Self-employment, Education, Training and Unions.

The study team was not able to quantify all of the information regarding barriers to entry for MBE/WBEs. As per the Keen Independent for the 2019 Availability and Disparity Study, HDOT used the quantification of the business ownership factor indicates an upward step 2 adjustment of 13.48 percentage points to reflect the "but-for" analyses of business ownership rates. If HDOT made this adjustment, the overall DBE goal for FTA-funded contracts would be 16.40 percent (2.92% + 13.48%).

HDOT considered the above information when determining whether to make a downward, upward or no step 2 adjustment when establishing its overall DBE goal. If HDOT made a downward step 2 adjustment reflecting current capacity to perform work, its overall DBE goal for FTA-funded contracts would be 1.51%. If HDOT decided to not make a downward adjustment and instead makes an upward adjustment that reflects analyses of business ownership rates, its overall DBE goal would be 16.40%.

For FTA-funded contracts, HDOT proposes using the base figure of 2.92% as its DBE goal for FFY 2021 through FFY 2023. HDOT chose not to make a step 2 adjustment based on the following rationale:

- The goal of 2.92% is greater than the median past DBE participation of 0.11% (based on the 2019 Keen Independent Availability and Disparity Study), which supports using the base figure rather than an upward step 2 adjustment.

- The difference between the 2.92% base figure and 0.11% DBE participation is 2.81 percentage points ( $2.92\% - 0.11\% = 2.81\%$ ). One-half of this difference is a downward adjustment of 1.41 percentage points ( $2.81\% \div 2 = 1.41\%$ ). The goal would then be calculated as follows:  $2.92\% - 1.41\% = 1.51\%$ , which supports using the base figure rather than a downward step 2 adjustment.
- In FFYs 2013 through 2018, HDOT fell short of its DBE goal (8.69%) by more than 8 percentage points each fiscal year, which indicates that an upward-adjusted goal of 16.40% on FTA-funded projects would not be achievable.

Federal fiscal year	DBE goal	DBE commitments/ awards	Difference from DBE goal
2013	8.69 %	0.00 %	-8.69 %
2014	8.69	0.29	-8.40
2015	8.69	0.00	-8.69
2016	8.69	0.00	-8.69
2017	8.69	0.00	-8.69
2018	8.69	0.00	-8.69

Source: HDOT Uniform Reports of DBE Awards/Commitments and Payments.

- HDOT calculated the difference between the “but for” MBE/WBE availability (13.48%) and the current availability (2.92%) to calculate the potential upward adjustment. This difference, and potential upward adjustment, is 16.40 percentage points ( $13.48\% + 2.92\% = 16.40\%$ ).
- HDOT feels that evidence does not suggest an adjustment is necessary.

**Overall DBE Goals for FTA-Funded Contracts.** HDOT considered upward and downward adjustments to the base figure to set its overall DBE goals for FTA-funded contracts. Based on the results of the 2019 Availability and Disparity Study summarized in this document and anticipating additional projects totaling approximately \$44,789,929.00 (with limited subcontracting opportunities and available DBEs), HDOT proposes a revised DBE goal of 2.92% on FTA-funded contracts for FFYs 2021 through 2023. HDOT proposes that it will meet this goal through solely neutral measures through the implementation of its pilot SBE program.

### **Race Neutral/Race Conscious Split**

Based on the results of the Keen Independent Study, HDOT has elected to meet its DBE overall goal via race neutral means. The proposed DBE overall goal is 2.92% with a 0%/2.92% race conscious/race neutral split respectively.

In order to help achieve this, HDOT has implemented its SBE Program for contract goals. The SBE program provides HDOT an opportunity to identify a larger number of firms that can participate in subcontracting opportunities for FTA-funded contracts because the eligibility criterion is less restrictive than the DBE eligibility criteria, which will allow for a potentially

larger pool of firms that can work on FTA-funded contracts. Please refer to the table below for SBE and DBE eligibility criteria.

Small Business Enterprise (SBE) Program	Disadvantaged Business Enterprise (DBE) Program
Owner(s) must:	Owner(s) must:
<ul style="list-style-type: none"> <li>• be economically disadvantaged</li> <li>• be a small business by SBA business size standards</li> <li>• own at least 51% and control the firm</li> </ul>	<ul style="list-style-type: none"> <li>• be socially <b><u>AND</u></b> economically disadvantaged</li> <li>• be a small business by SBA business size standards</li> <li>• own at least 51% and control the firm</li> </ul>

HDOT certifies firms as SBEs in the same way it certifies companies as DBEs, except they would not need to be owned and controlled by minorities or women.

The more firms that are eligible to participate in subcontracting opportunities provides HDOT the ability to establish higher contract goals, which in turn may assist HDOT in reaching its DBE overall goal.

The SBE contract goal setting process mirrors how HDOT sets DBE contract goals. HDOT will utilize the online Certification and Contract Compliance Management System to monitor SBE participation and will utilize commercially useful function reviews to ensure that SBE are indeed performing work on the project.

The revised FTA goal has been narrowly tailored and illustrates the following:

Overall goal: 2.92%

Race Neutral goal: 2.92%

Race Conscious goal: 0.00%

The newly revised proposed goal of 2.92% (Overall 2.92% / Race Neutral 2.92% / Race Conscious 0.00%) is less than the original proposed goal of 14.63% (Overall 14.63% / Race Neutral 14.63% / Race Conscious 0.00%). This is due to the large dollar amounts of a few projects for FFY 2021-2023 and the lack of potential subcontracting opportunities and available DBEs for those projects.

The newly revised proposed goal of 2.92% is more feasible and provides a better opportunity for attainment.

Attachment 1  
Master Availability Database

Firm Name	Address	City	State	Zip code	Contact person	Position	Phone called	Email provided	KN_Main Type of Work Code	KN_Main Type of Work description	Average annual gross revenue code	Average annual gross revenue description	Potential OBE (yes=1, no=0)
Pacific Blue Construction LLC	1648 Haleukana Street	Lihue	HI	96766	DARRYL MAEDA	MEMBER	8082458838			1 Office and public building construction	1	Less than \$1 million	0
Starcom Builders, Inc.	930 Mccully St Ste 207	Honolulu	HI	96826	TATIANA	OFFICE MANAGER	8089526088			1 Office and public building construction	3	\$5.1 million to \$7.5 million	0
Talion Construction, LLC	819 Moowaa Street, Suite 209	Honolulu	HI	96817	WILLI TALUAN	PRESIDENT	8082258187	wtaluan@talion.com		1 Office and public building construction	6	\$15.1 million to \$20.5 million	0
CUSHNIC CONSTRUCTION C	4702 LAE RD.	KALAHEO	HAWAII	96741	0	REFUSED	8083329000			2 General road construction and widening	3	\$5.1 million to \$7.5 million	0
Hirayama Brothers Electric,	930 Kalaikoa Street	Hilo	HI	96720	SHAR	OFFICE MANAGER	8089350933	hbecohana@gmail.com		4 Electrical work including lighting and signals	2	\$1 million to \$5 million	0
PC Enterprises, Inc.	930 Waialeale Rd Ste 113	Honolulu	HI	96817	STACY OTA	OFFICE MANAGER	8082362285			4 Electrical work including lighting and signals	2	\$1 million to \$5 million	0
Cunningham's Air Systems	C96-1272 Waihana St Unit 1	Pearl City	HI	96782	RICKY CUNNINGHAM	OWNER	8084299420			6 Plumbing, heating and air conditioning	1	Less than \$1 million	0
JS Int'l Inc.	PMB 167 590 FARRINGTON HWY #210	KAPOLEI	HAWAII	96707	PANTHOFFER	OFFICE MANAGER	2403648111	GEORGIANPANTHOFFER@JSINTL.NET		7 Steel work	2	\$1 million to \$5 million	0
Imua Landscape Company, I	P O Box 29603	Honolulu	HI	96820	JOANN	MANAGER	8084561930	imuland@yahoo.com		10 Landscaping and related work including erosion control	3	\$5.1 million to \$7.5 million	0
Kauai Hydrosced & Landsca	1786 HALEUKANA UNIT 102	LIHUE	HAWAII	96766	0	MANAGER	8082458482	debra@kauaihydrosced.com		10 Landscaping and related work including erosion control	2	\$1 million to \$5 million	0
Makaliwa Maintenance & L	89-302 Mokiawe St	Waianae	HI	96792	SEDRICA ANUHEALI	MANAGER	8083499888	makaliwa@yahoo.com		10 Landscaping and related work including erosion control	1	Less than \$1 million	0
Pacific Preferred Contractor	1805 Homerule Street	Honolulu	HI	96819	PALMER	PRESIDENT	8088486615	scottpc@hawii.rr.com		15 Striping or pavement marking	2	\$1 million to \$5 million	0
Robert Craig Sare dba RJA P	PO Box 1745	Keaau	HI	96749	ROBERT SARE	OWNER	8089362310	rgaprecast@hotmail.com		17 Other Concrete Work	1	Less than \$1 million	0
Kalaka Nui, Inc.	91-558 Awakumoku St	Kapolei	HI	96707	RICH HAZELL	PRESIDENT	8086822847	kalakanuis@aol.com		21 Trucking and hauling	2	\$1 million to \$5 million	0
S&C Trucking LLC	87-1859 Holomalia Street	Waianae	HI	96792	SELLA	OWNER	8086910464	scmakekau@gmail.com		21 Trucking and hauling	1	Less than \$1 million	0
SANFORD'S SERVICE CENTER	15-2628 KEAAU PAHOA RD	PAHOA	HAWAII	96778	KIMBERLY IWATA	SALES MANAGER	808958144	sanscinc.kim@hawaiiantel.net		21 Trucking and hauling	2	\$1 million to \$5 million	0
Anil Verma Associates, Inc.	841 Bishop Street Suite 988	Honolulu	HI	96813	JOE ARIAS	DIRECTOR OF PROJECT MANAGER	8083698108	joea@anilverma.com		41 Architecture and engineering	5	\$11.1 million to \$15 million	0
KN Consulting LLC	P.O. Box 283222	Honolulu	HI	96828	NOE COBB-ADAMS	PRESIDENT	8082286907	noecobbadams@gmail.com		41 Architecture and engineering	1	Less than \$1 million	0
Minatoishi Palumbo Archite	1132 Bishop St. Suite 1511	Honolulu	HI	96813	LORRAINE MINATOISHI	PRESIDENT	8089427474	lm@mahawaii.com		41 Architecture and engineering	1	Less than \$1 million	0
PSC Consultants LLC	94-547 Ukee St Ste 210	Waipahu	HI	96797	VALERIE	ASSISTANT TO OWNER/CEO	8086766677			41 Architecture and engineering	1	Less than \$1 million	0
Reyes Engineering Inc	700 Richards St Suite 2104-A	Honolulu	HI	96813	MALLORY BUCK	OPERATIONS MANAGER	8087724522	marketing@reyeseng.com		41 Architecture and engineering	2	\$1 million to \$5 million	0
Mau Environmental Consulti	PO Box 790568	Pala	HI	96779	MICHAEL REYES	PRINCIPAL AND SENIOR	8088666919	mreyesecology@gmail.com		46 Environmental consulting	1	Less than \$1 million	0
The Loft Gr oup, LLC	63-5285 Painted Church Rd.	Captain Cook	HI	96704	MAJAJKA LOFTUS	OWNER	8082505899	maiaikaofloftus@gmail.com		91 Other -Professional services	1	Less than \$1 million	0
KKK Aluminum and Glass, In	746 Kopeke Street	Honolulu	HI	96819	ARTHUR KASHIMOTO THE THIRD	VP	8088413337	a3kglass@hawaiiantel.net		89 Other -Construction	2	\$1 million to \$5 million	0
Mana'o Construction LLC	P.O. Box 4776	Kaneohe	HI	96744	CHERYL FORD	MANAGER	8086777800	accounting@manaolc.com		89 Other -Construction	2	\$1 million to \$5 million	0
Zip U There, Inc.	99-503 Kaholi Pl	Aiea	HI	96701	BRUCE KAGAWA	PRESIDENT	8083423300	bksagawa@hawaii.rr.com		90 Other -Goods and other services	2	\$1 million to \$5 million	0
Globetecck Group Inc	2752 Woodlawn Dr S-204a	Honolulu	HI	96822	KEHAU T.	SENIOR TECH	8088335787	MOHAMMAD@GLOBETECKGROUP.COM		91 Other -Professional services	1	Less than \$1 million	0
Integrated Security Techno	94-1388 Moaniani Street Suite 204	Waipahu	HI	96797	JANJARI SANTIAGO	HEALTH CARE ACCOUNT MANAGER	8088364094	Sales@istechs.net		90 Other -Goods and other services	1	Less than \$1 million	0
KA'ALA SYSTEMS TECHNOLO	98-025 HEKAHA ST BUILDING 2 SUITE 224A	AIEA	HAWAII	96701	DAVE MILLARD	OPERATIONS OFFICER	8084855353	dmillard@ksthawaii.com		91 Other -Professional services	3	\$5.1 million to \$7.5 million	0
Pencilhead Productions, LLC	643 Akoakoa St.	Kailua	HI	96734	CYNTHIA DEROSIER	OWNER	8083892474	cyn@goodjluco.com		91 Other -Professional services	1	Less than \$1 million	0
CK Roofing Co	1076 Sand Island Pkwy	Honolulu	HI	96819	KETH	OWNER	8088413535	kcroofinghi@gmail.com		5 Roofing	1	Less than \$1 million	0
Aloha Trucking Inc.	P.O. BOX 752 71	KAPOLEI	HAWAII	96707	KEFIA	OFFICE MANAGER	8082163286	alohatrucking@hotmail.com		21 Trucking and hauling	2	\$1 million to \$5 million	0
Orse, LLC	2117 Saint Louis Dr	Honolulu	HI	96816	KAINANI KRAUT	OWNER	8087782260	ADMIN@OR-SE.COM		41 Architecture and engineering	1	Less than \$1 million	0
Akinaka & Associates, Ltd.	1100 Alakea St Ste 1800	Honolulu	HI	96813	DARNELL	ADMINISTRATOR	8088361900			41 Architecture and engineering	2	\$1 million to \$5 million	0
Vares Contracting Inc	645 Komo Ohia St	Wailuku	HI	96793	LESIA LORES	VICE PRESIDENT	8087570687	eavares@gmail.com		1 Office and public building construction	1	Less than \$1 million	1
Ic Construction, Inc	812 Kawaiahao St Ste A	Honolulu	HI	96813	NEHEMIAH	MANAGER	8088418799	icci@icchi.com		1 Office and public building construction	4	\$1 million to \$5 million	1
Electratech Services	6386 Ahele Dr	Kapaa	HI	96746	ERIC BRAUN	OWNER	8084820088	electratech01@gmail.com		4 Electrical work including lighting and signals	1	Less than \$1 million	1
Static Charge LLC	17 Kaweo Pl	Kula	HI	96790	WILLIE DAGUION	OWNER	8082644466	staticchargeic@gmail.com		4 Electrical work including lighting and signals	1	Less than \$1 million	1
RK Mechanical	975 Alaalua Dr	Hilo	HI	96720	ROMONA KALALAU	OFFICE MANAGER	8089595705	rkmechanical@hawaii.rr.com		4 Electrical work including lighting and signals	1	Less than \$1 million	1
RMH Electric Co., Inc.	727 Barnister St	Honolulu	HI	96819	JULIE WEE	VICE PRESIDENT	8088405130	rmhelectric@hawaii.rr.com		4 Electrical work including lighting and signals	2	\$1 million to \$5 million	1
Dwe, Inc.	15 Kukila St Ste 4	Hilo	HI	96720	WAYNE	VICE PRESIDENT	8089611117	wtayama@dwehawaii.com		4 Electrical work including lighting and signals	2	\$1 million to \$5 million	1
Communication Consulting	1605 Colburn St	Honolulu	HI	96817	GAROLD NODA	PRESIDENT	8088427800	gnoda@ccsai-solutions.com		4 Electrical work including lighting and signals	1	\$5.1 million to \$7.5 million	1
Mk Electric LLC	99-1392 Koaha Pl	Aiea	HI	96701	ANNY ANUA	OFFICE MANAGER	8084872977	allan@mkelectricllc.com		4 Electrical work including lighting and signals	2	\$1 million to \$5 million	1
MURAKAMI ROOFING LLC	94-558 KAMEHAMEHA HWY. #C18	KANEOHE	HAWAII	96744	MICHELE ARAKAWA	SALES MANAGER	8083488270	INFO@MURAKAMIROOFING.COM		5 Roofing	2	\$1 million to \$5 million	1
Pacific Roofing & Repair LLC	816 Alua St	Wailuku	HI	96793	IKAKA LEE	PRESIDENT	8082767900	pacificroofing08@hawaii.rr.com		5 Roofing	2	\$1 million to \$5 million	1
Akamai Roofing Inc.	98-1277 Kaahumanu St, Ste 106 Pmb #178	Aiea	HI	96701	DARLENE	OFFICE MANAGER	8084865555	Darlene@Akamairoofinginc.com		5 Roofing	2	\$1 million to \$5 million	1
808 Air Conditioning, LLC	P.O. BOX 1411	AIEA	HAWAII	96701	SHERRIE	PART OWNER, TAKE CARE OF OFFICE	8082586991	808airconditioningllc@gmail.com		6 Plumbing, heating and air conditioning	1	Less than \$1 million	1
Islandwide Mechanical Servi	74-5489 Loloku St Unit F1	Kailua Kona	HI	96740	RENO LAU	VICE PRESIDENT	8083397872	reno@islandwidemech.com		6 Plumbing, heating and air conditioning	1	Less than \$1 million	1
535 PLUMBING LLC	P.O. BOX 11088	HONOLULU	HAWAII	96828	MARK MIZUSAWA	WORKS IN OFFICE	8089796487	535plumbing@gmail.com		6 Plumbing, heating and air conditioning	1	Less than \$1 million	1
Diversified Plumbing & AC	P.O. BOX 37124	HONOLULU	HAWAII	96837	DOUGLAS LUIZ	OWNER	8086713999	DIVERSIFIEDPLUMBING@HAWAII.RR.COM		6 Plumbing, heating and air conditioning	2	\$1 million to \$5 million	1
State Wide Plumbing Inc.	98-820 MOANA LUA ROAD UNIT 15-247	AIEA	HAWAII	96701	STEVEN NAKANISHY	VICE PRESIDENT	8083308123	swp808@gmail.com		6 Plumbing, heating and air conditioning	1	Less than \$1 million	1
Honolulu Plumbing Co Ltd	1909 Homerule St	Honolulu	HI	96819	0		8088475796			6 Plumbing, heating and air conditioning	2	\$1 million to \$5 million	1
Pacific Air Conditioning & Sh	816 Alua St	Wailuku	HI	96793	JOVEE LEE	PRESIDENT	8082440161	pacair@hawaii.rr.com		6 Plumbing, heating and air conditioning	2	\$1 million to \$5 million	1
Sanborn General Contracti	2916 Ainaloa Dr Apt C	Hilo	HI	96720	0		8089596458			8 Excavation, site prep, grading and drainage	1	Less than \$1 million	1
Island Construction & Demo	PO Box 1857	Waianae	HI	96792	LIONEL ANTONIO	PROJECT ESTIMATOR AND PROJECT ENGINEER	8086968070	LIONEL ANTONIO@ISLAND-CONSTRUCTION.NET		9 Wrecking and demolition	2	\$1 million to \$5 million	1
Lopez Trucking & Sons LLC	P.O. BOX 190	KALUMAKANI	HAWAII	96747	TIMMY LOPEZ	OWNER	8086457060	lopezt@hawaiiantel.net		21 Trucking and hauling	1	Less than \$1 million	1
Wsqured Engineering LLC	2689 Poki Pl B	Hilo	HI	96720	BERT SAITO	PRESIDENT	8089352992	ber@w2engineers.com		41 Architecture and engineering	1	Less than \$1 million	1
Engineering Technology Hav	1360 S Beretania St Ste 201	Honolulu	HI	96814	WESLEY SHIHARA	PRESIDENT	8082248265	wishihara@e-tech-hi.com		41 Architecture and engineering	1	Less than \$1 million	1
Tanimura & Associates Inc	925 Bethel St Ste 309	Honolulu	HI	96813	LISA LEE	OFFICE MANAGER	8085367492	lisa@tanimuraeng.com		41 Architecture and engineering	1	Less than \$1 million	1
MoriKawa & Associates Engi	431 Aulii Dr	Makawao	HI	96768	RYAN KIM	ELECTRICAL ENGINEER	8085721745	ryan@mai-hawaii.com		41 Architecture and engineering	1	Less than \$1 million	1
Allison Ide Structural Engine	900 Fort Street Mall Ste 1670	Honolulu	HI	96813	BRIAN IDE	PRESIDENT	8085362108	brianide@allisonide.com		41 Architecture and engineering	2	\$1 million to \$5 million	1
Anbe, Aruga & Ishizu Archi	1441 Kapiolani Blvd., Suite 206	Honolulu	HI	96814	JOYCE	SECRETARY	8089491025	office@aai-architects.com		41 Architecture and engineering	2	\$1 million to \$5 million	1
Benjamin Woo Architects	600 KAPIOLANI BLVD ST 402B	HONOLULU	HAWAII	96813	MELVIN NAKAOKA	VICE PRESIDENT	8085916616	mel@benwoarchitects.com		41 Architecture and engineering	2	\$1 million to \$5 million	1
Hawaii Architecture LLP	1188 Fort Street Mall #201	Honolulu	HI	96813	CODY BROWN	ASSISTANT CONSTRUCTION ADMINISTRATOR	8087213411	INFO@HARCHY.NET		41 Architecture and engineering	1	Less than \$1 million	1
Herbert Chock & Associates	1287 Kalani St Ste 203	Honolulu	HI	96817	HERBERT CHOCK	PRESIDENT	8085269399	herb@hcahawaii.com		44 Construction management	1	Less than \$1 million	1
TRINITY MANAGEMENT GRC	1916 Young Street, Suite 102	Honolulu	HI	96826	JAMIE KAKEHI	MANAGER	8089465554			44 Construction management	1	Less than \$1 million	1

Attachment 1  
Master Availability Database

Hawaii International Enviror 70 Kihapai St	Kailua	HI	96734	MAYUMI RANDALL	PRESIDENT	8082634787	mayumi@hiesinc.com	46 Environmental consulting	2 \$1 million to \$5 million	1
Sustainable Resources Grou 111 Hekili St Ste A373	Kailua	HI	96734	PATRICK HOOD	VICE PRESIDENT	8082610862	ahood@srgrl.com	46 Environmental consulting	1 Less than \$1 million	1
CB Tech Services Inc 1728 KALANI STREET	HONOLULU	HAWAII	96819	CARMINA CRISCOLA	OFFICE MANAGER	8088480060	CBTS@CBTECHSERVICE.COM	89 Other - Construction	3 \$5.1 million to \$7.5 million	1
In Line Flooring, LLC 2020c Kahai St Unit C	Honolulu	HI	96819	JOANA STORY	ADMINISTRATOR	8088429933	joana@inlineliflooring.com	89 Other - Construction	2 \$1 million to \$5 million	1
OK HARDWARE & CONSTRU P.O. Box 603	Pearl City	HI	96782	GWEN SCOTT	OPERATIONS MANAGER	8086712886		90 Other - Goods and other services	2 \$1 million to \$5 million	1
CompPac LLC 1150 South King Street, Suite 1200	Honolulu	HI	96813	JOHN MCNAMARA	PRESIDENT	8085215391	jmcnavara@compact.com	91 Other -Professional services	2 \$1 million to \$5 million	1
Anderson Burton Constructi 7 Aewa Place Unit 8	Makawao	HI	96768	JAY	EXECUTIVE ASSISTANT IN TRAVEL	8082807404	jay@andersonburton.com	1 Office and public building construction	1 Less than \$1 million	0
JD Hawaii Contractors Inc. 2352 10th Avenue Pl	Honolulu	HI	96816	JOHN DRAFFAN	CEO	8084362525	jdhawaiicontractors@gmail.com	1 Office and public building construction	2 \$1 million to \$5 million	0
Kikiala Construction Co Ltd P.O. BOX 849	WAIMEA	HAWAII	96796	LOKE DSENBERRY	OFFICE CLERK	8083380021	INFO@KIKIALACONSTRUCTION.COM	1 Office and public building construction	2 \$1 million to \$5 million	0
Pacific Recreation Co., LLC 99-899 Iwena St Ste 113	Alsea	HI	96701	CLARICE THROWNE	RECEPTIONIST	8084800644	admin@tarcechawaii.com	1 Office and public building construction	2 \$1 million to \$5 million	0
JD Pacific LLC P.O. BOX 431	KULA	HAWAII	96790	GREG DOWNS	OWNER	8083573797	gdowns@lava.net	1 Office and public building construction	2 \$1 million to \$5 million	0
HAWAII PLUMBING SERVICE 1670 Makalao St Ste 204-197	Honolulu	HI	96814	JACOB SIMMS	DIRECTOR OF OPERATIONS	8085186808	jake.simms@handyandhawaii.com	1 Office and public building construction	2 \$1 million to \$5 million	0
Alan Shintani Inc. 94-409 Akoki St	Waipahu	HI	96797	NERIBEL ORTIZ	HR MANAGER	8088417631	NERIBEL@ALAN-SHINTANI.COM	1 Office and public building construction	6 \$15.1 million to \$20.5 million	0
CC Engineering & Constructi 328 HOOKELA	HONOLULU	HAWAII	96819	CHRIS CHUENG	MANAGER	8088482032	cchueng@hawaii.rr.com	1 Office and public building construction	3 \$5.1 million to \$7.5 million	0
Central Construction Incorpi 353 Hanamau St Ste 2	Kahului	HI	96732	SANDY MATSUMOTO	PRESIDENT	8088770627	bizbubs@hawaiiintel.net	1 Office and public building construction	3 \$5.1 million to \$7.5 million	0
F & H Construction 1728 Willi Pa Loop Ste 200	Wailuku	HI	96793	DAN BLACKBURN	HAWAII DIVISION MANAGER	8088718515	dblackburn@f-hconstr.com	1 Office and public building construction	12 \$56.5 million or more	0
Layton Construction 707 RICHARD S	HONOLULU	HAWAII	96813	MIA CHECKLEY	PROJECT ASSISTANT// OFFICE MANAGER	8082458680	mcheckley@laytonconstruction.com	1 Office and public building construction	12 \$56.5 million or more	0
Nakasato Contracting LLC 1015 Paapu St	Honolulu	HI	96819	LARA	OPERATIONS	8088454986	info@nakasatolic.com	1 Office and public building construction	2 \$1 million to \$5 million	0
Summit Construction, Inc. 98-055 Kamehameha Hwy C2	Alsea	HI	96701	FRANK STORCH	VICE PRESIDENT	8085315914	SCI@SUMMITHAWAII.NET	1 Office and public building construction	3 \$5.1 million to \$7.5 million	0
Hawaii Industrial Services LT 3049 Ualena St Ste 709	Honolulu	HI	96819	VINCE CANTRELL	PRESIDENT	8088368652		2 General road construction and widening	2 \$1 million to \$5 million	0
GP ROADWAYS AND SERVIC 660 Mapunapuna Street	Honolulu	HI	96819	BRAD EOM	MARKETING MANAGER	8088332502		2 General road construction and widening	1 Less than \$1 million	0
P. B. Sullivan Construction, I 2662 Wai Wai Pl Ste 201	Kihei	HI	96753	LYDDY NORQUIST	PRESIDENT	8088752833	Llyod@pbsullivanconst.com	2 General road construction and widening	3 \$5.1 million to \$7.5 million	0
Paradigm Construction LLC 94481 AKOKI ST	WAIAPAHI CITY	HAWAII	96797	0	SECRETARY	8088471646		2 General road construction and widening	1 Less than \$1 million	0
Gary A Pacheco P.O. BOX 158	KILAUEA	HAWAII	96754-0158	GARY A PACHECO	HAWAIIAN TELEPHONE COMPANY	8086522323	pacheco@hawaiian.net	4 Electrical work including lighting and signals	1 Less than \$1 million	0
Island Electrical Contracting 87-226 Holomala Pl	Walaanae	HI	96792	JAKE LEWIS	OWNER	8083385360	jake@iecoahu.com	4 Electrical work including lighting and signals	1 Less than \$1 million	0
Pacific Detection Inc 1321 Hart St Ste 5	Honolulu	HI	96817	BRANDON REISTN	VICE PRES	8082654773	brandon@padficdetection.com	4 Electrical work including lighting and signals	1 Less than \$1 million	0
Ekolu Enterprises Inc. 2647 Puninoni St	Wahiana	HI	96786	0		8083722302		4 Electrical work including lighting and signals	1 Less than \$1 million	0
Brian's Electric LLC 206 Eliani St	Makawao	HI	96768	BRIAN	OWNER	2135051004	brianp@gmail.com	4 Electrical work including lighting and signals	1 Less than \$1 million	0
Preferred Electric LLC 1190 Hooolina Pl	Haiku	HI	96708	KATHY PISONI	OFFICE MANAGER	8085736058	pisoni001@hawaii.rr.com	4 Electrical work including lighting and signals	1 Less than \$1 million	0
Bill Ward Electric 3450 Keba Dr	Kihei	HI	96753	BILL WARD	OWNER	8085909498	bill@billwardswelectric.com	4 Electrical work including lighting and signals	1 Less than \$1 million	0
Helix Electric, Inc. 238 Sand Island Access Rd M3	Honolulu	HI	96819	SCOTT MASSNER	OPERATIONS MANAGER	8088430286	smassner@helixelectric.com	4 Electrical work including lighting and signals	1 Less than \$1 million	0
Eagle Electric LLC P.O. BOX 13/56-408 PAHELEHALA LOOP	KAHUKU	HAWAII	96731	NOROOA TAEA	OWNER	8082931516	mta@hawaii.intea.com	4 Electrical work including lighting and signals	1 Less than \$1 million	0
Always On Electric 475 KINOOLE 3	HILO	HAWAII	96720	CHARLES MEREDITH	OWNER	8089651596	charlie@alwaysonelec.com	4 Electrical work including lighting and signals	1 Less than \$1 million	0
Valley Isle Electric 1942 Main St Ste 105	Wailuku	HI	96793	ANDREA	MANAGER	8082421974	service@valleyisleelectric.com	4 Electrical work including lighting and signals	2 \$1 million to \$5 million	0
G2 Electric LLC 45-636 LIULA STREET	KANEOHE	HAWAII	96744	LARRY GRECO	OWNER	8083434323	G2electricrhawaii@gmail.com	4 Electrical work including lighting and signals	1 Less than \$1 million	0
K M Electrical Services, Inc. 4348 Waiala Ave Ste 315	Honolulu	HI	96816	MATT STRAW	OFFICE MANAGER	8085954503	info@kmeletrichawaii.com	4 Electrical work including lighting and signals	1 Less than \$1 million	0
Hawaii Electrical Solutions L 330640 KAHULUI	Kahului	HAWAII	96733	JARRED	PROJECT MANAGER	8087272999	jilbby@heshawaii.com	4 Electrical work including lighting and signals	2 \$1 million to \$5 million	0
Hue Electric Inc. 3145 Huelani Pl	Honolulu	HI	96822	BRIAN	OWNER	8083723191		4 Electrical work including lighting and signals	1 Less than \$1 million	0
Direct Contracting Company 94-344 Ukee St Ste 2	Waipahu	HI	96797	MARK SUTTON	OPERATIONS ASSISTANT	8085542572	INFO@DIRECTELECTRICHAWAII.COM	4 Electrical work including lighting and signals	1 Less than \$1 million	0
Aina Hana Inc P.O. BOX 512	HILO	HAWAII	96721	JAKE E OSKINS	SHAREHOLDER, OWNER, VICE PRESIDENT,	8089826224	HAUPIA113159@MSN.COM	4 Electrical work including lighting and signals	3 \$5.1 million to \$7.5 million	0
CBS Electric Inc. P.O. BOX 23282	HONOLULU	HAWAII	96823	BERT SHIOSAKI	PRESIDENT	8084882822	CBSSELECTRIC@GMAIL.COM	4 Electrical work including lighting and signals	1 Less than \$1 million	0
Roger's Electric Service & M 4443 Loina Pl	Honolulu	HI	96818	ROGER BUNGACAYAO	OWNER	8084844411	RBUNGACAYAO2@OUTLOOK.COM	4 Electrical work including lighting and signals	1 Less than \$1 million	0
VANS ELECTRIC INC 99-1156 Halawa Heights Rd B	Alsea	HI	96701	HOLLY HOLCOMB	MANAGER	8084876537	office.vanseletric@yahoo.com	4 Electrical work including lighting and signals	1 Less than \$1 million	0
JB Construction LLC 91-110 Hamua St Ste 310	Kapolei	HI	96707	SHARON F	OFFICE MANAGER	8086828189		4 Electrical work including lighting and signals	2 \$1 million to \$5 million	0
Northwest Electric Inc 118 Kupuhui St Ste C5	Lahaina	HI	96761	NOEL	PRESIDENT	8086675054	nwe-mgmt@hawaii.rr.com	4 Electrical work including lighting and signals	2 \$1 million to \$5 million	0
Renewable Energy Services, P.O. BOX 1518	HONOKAA	HAWAII	96727	BRITTANY	MANAGER	8087757410		4 Electrical work including lighting and signals	2 \$1 million to \$5 million	0
Telecab Systems, Inc. 73-4165 Hulihoa Dr Unit 1	Kailua Kona	HI	96740	ALYSSA	OFFICE MANAGER	8083292480		4 Electrical work including lighting and signals	2 \$1 million to \$5 million	0
Vp Electric LLC 73-5563 Maiau St Ste C	Kailua Kona	HI	96740	JOHN COTTLE	PROJECT MANAGER	8084984170	jcottle@vpelectricllc.com	4 Electrical work including lighting and signals	2 \$1 million to \$5 million	0
Elemental Energy LLC 905 KALANIANAOLE HWY 3001	KAILUA	HAWAII	96734	JEFFREY SHULTY	LEAD COMMERCIAL PROJECT MANAGER	A 8082626600	info@sunetric.com	4 Electrical work including lighting and signals	3 \$5.1 million to \$7.5 million	0
AMERICAN ELECTRIC 799 KAHUHU AVE	MILILANI	HAWAII	96789	CLARK TYLER	MANAGER	8086350899		4 Electrical work including lighting and signals	1 Less than \$1 million	0
COMMERCIAL ELECTRIC, INC 1010 PAAPU STREET	HONOLULU	HAWAII	96819	TODD DWIGHT	OFFICE MANAGER	8088414595	nick@cei-oahu.com	4 Electrical work including lighting and signals	3 \$5.1 million to \$7.5 million	0
Jack Endo Electric, Inc. 2814 Killhau St	Honolulu	HI	96819	TODD DWIGHT	ASSISTANT GENERAL MANAGER	8088397717	todd@endoelectric.com	4 Electrical work including lighting and signals	5 \$11.1 million to \$15 million	0
Ted's Wiring Service, Ltd. 500 Alakawa St Rm 222	Honolulu	HI	96817	MARILYN TERAYAMA	ASSISTANT TO OWNERS/CEO	8088455122	mst.tws@gmail.com	4 Electrical work including lighting and signals	2 \$1 million to \$5 million	0
Tsm Enterprises, Inc. 692 Uluaa St	Kailua	HI	96734	ALIKA	VICE PRESIDENT	8087127222	operations@pono-solutions.com	4 Electrical work including lighting and signals	2 \$1 million to \$5 million	0
Wasa Electrical Services, Inc 1021 Kikowaena Pl # 2	Honolulu	HI	96819	RENEE WOOTEN	OFFICE MANAGER	8088392741	rc224@wasahawaii.com	4 Electrical work including lighting and signals	12 \$56.5 million or more	0
Roof Service Hawaii Inc. 53-836 Kamehameha Hwy	Hauula	HI	96717	BONNIE WOOTEN	VICE PRESIDENT	8088645830	chuck@roofservicehawaii.com	5 Roofing	1 Less than \$1 million	0
Island Metals Inc. 8208, 3-4051 Kuhio Hwy	Lihue	HI	96766	GABRIEL PEARL	OWNER	8082464700	kaualmetals@gmail.com	5 Roofing	2 \$1 million to \$5 million	0
SURFACE SHIELD ROOFING 3342 Waiala Ave Ste 3	Honolulu	HI	96816	AMANDA GREGORY	EXECUTIVE ADMINISTRATIVE OFFICER	8087399599	govtcontracts@surfaceshieldroofing.com	5 Roofing	3 \$5.1 million to \$7.5 million	0
A A A Roofing Co. and Genel 47 Nohokai St	Kihei	HI	96753	JAMES BOULTON	OWNER	8088790459	jeltt@y.rr.com	5 Roofing	1 Less than \$1 million	0
Lyden Sliding Co Inc 96-1225 Waihona St Ste B	Pearl City	HI	96782	WILLIAM LYDEN	PRESIDENT	8084554592	LYDENC@AOL.COM	5 Roofing	1 Less than \$1 million	0
Laina K Yana 410 Mahealani Ave Apt 609	Honolulu	HI	96813	ROMONA YANAI	MANAGER	8085334905		5 Roofing	2 \$1 million to \$5 million	0
Paradise Roofing Corporatio 1568 PENICOLA ST	HONOLULU	HAWAII	96822	SUZANNE SARLUND	ADMINISTRATION	8083995638	Paradiseroofingcorp@gmail.com	5 Roofing	2 \$1 million to \$5 million	0
Buck Roofing Company, Inc. P.O. BOX 1799	HONOKAA	HAWAII	96727	KAOHINANI SCHIPA	PRESIDENT	8087757496	sales@buckroofinghawaii.com	5 Roofing	2 \$1 million to \$5 million	0
Commercial Roofing & Wate 94-260 Pupulee Street	Waipahu	HI	96797	SUMMMER KATANA	CONTRACT COORDINATOR	8088417246		5 Roofing	1 Less than \$1 million	0
MRC Roofing, LLC 1041 Puuwa St	Honolulu	HI	96819	CRAIG SMITH	CHIEF ESTIMATOR	8088424464	mrc@mrcroofing.com	5 Roofing	2 \$1 million to \$5 million	0
Tory's Roofing & Waterproo 96-1382 Waihona St Ste 1	Pearl City	HI	96782	PAMELA BECHTEL	BOOKKEEPER	8084565990	pam@toryroofing.com	5 Roofing	5 \$11.1 million to \$15 million	0
Ohana Plumbing 45-413 Pua Makahala St	Kaneohe	HI	96744	JESSICA CURTIS	PRESIDENT	8087795023	OHANAPLUMBING@GMAIL.COM	6 Plumbing, heating and air conditioning	1 Less than \$1 million	0
Tino's Hvac Installation and 91-2041 Kaioli St Ste 2303	Ewa Beach	HI	96706	0		80877220439		6 Plumbing, heating and air conditioning	1 Less than \$1 million	0
Kona Air Conditioning Inc. 73-4200 Hulihoa Dr Ste D	Kailua Kona	HI	96740	JENNIFER SCHIELD	OFFICE MANAGER	8083267700	KONAHVAC@GMAIL.COM	6 Plumbing, heating and air conditioning	1 Less than \$1 million	0

Attachment 1  
Master Availability Database

Elite Refrigeration LLC	P.O. BOX 1115	PUUNENE	HAWAII	96784	ADAM LANGDON	OWNER	8084632321	eliterfrigerationmaui@gmail.com	6 Plumbing, heating and air conditioning	1 Less than \$1 million	0
Mac's Plumbing Inc.	P.O. BOX 1812	KAILUA	HAWAII	96734	DAVID MCCLAY	OWNER	8086381435	macsplumbinghawaii@gmail.com	6 Plumbing, heating and air conditioning	1 Less than \$1 million	0
Allens Plumbing Inc	360 PA PA PLACE	KAHULUI	HAWAII	96732	KANE COYLE	OPERATIONS MANAGER	8085995511	kcwoyle@allensplumbing.com	6 Plumbing, heating and air conditioning	3 \$5.1 million to \$7.5 million	0
All Pacific Plumbing & Mech	971 Akumu St	Kailua	HI	96734	SHANNON	OWNER	8084783436		6 Plumbing, heating and air conditioning	1 Less than \$1 million	0
Aegion Corporation	91-255 KALAELOA BLVD.	KAPOLEI	HAWAII	96707	RENE	ADMINISTRATION	8086824750	rfeliciano@aegion.com	6 Plumbing, heating and air conditioning	1 Less than \$1 million	0
Service A C and Plumbing	220 PUUHALE RD STE A3	HONOLULU	HAWAII	96819	NICK	PRESIDENT	8086751277		6 Plumbing, heating and air conditioning	2 \$1 million to \$5 million	0
Nelson Contracting Inc	719 Maimali St	Kihei	HI	96753	STEPHANIE VIGNEUX	OFFICE MANAGER	8082765644		6 Plumbing, heating and air conditioning	2 \$1 million to \$5 million	0
Maui Plumbing Inc.	355 HUKILIKE ST STE 201	KAHULUI	HAWAII	96732	PETER	CONSTRUCTION MANAGER	8083440642	operations@mauiplumbinginc.com	6 Plumbing, heating and air conditioning	1 Less than \$1 million	0
Honolulu Sewerwater Air Cond	1132 Bishop St Ste 1410	Honolulu	HI	96813	ARMIDA	OFFICE MANAGER	8085317922		6 Plumbing, heating and air conditioning	1 Less than \$1 million	0
Purair Hawaii II, Ltd	833 Ilaniwai St Ste A	Honolulu	HI	96813	BRIAN	SALES MANAGER	8085892712	cs@purairhi.com	6 Plumbing, heating and air conditioning	2 \$1 million to \$5 million	0
Critchfield Pacific, Inc.	590 PAIEA ST. STE B	HONOLULU	HAWAII	96819	BUGE EDMOND	ADMINISTRATIVE ASSISTANT	8088532000	bdelamer@cpimech.com	6 Plumbing, heating and air conditioning	12 \$56.5 million or more	0
Commercial Plumbing Inc.	1820 Colburn St	Honolulu	HI	96819	KATHRYN YAMAUCHI	OFFICE MANAGER	8088454112	kathryn@complumbing.com	6 Plumbing, heating and air conditioning	11 \$38.6 million to \$56.4 million	0
Commercial Sheetmetal Co.	94-142 Leoleo St	Waipahu	HI	96797	G.S.	CEO	8086714002		6 Plumbing, heating and air conditioning	6 \$15.1 million to \$20.5 million	0
Doonwood Engineering Inc	333 Ulunui Street	Kailua	HI	96734	CYNTHIA	ACCOUNTING MANAGER	8082622344	am@duunwoodengineering.com	6 Plumbing, heating and air conditioning	4 \$7.6 million to \$11 million	0
Economy Plumbing & Sheet	1029 Ulupono St	Honolulu	HI	96819	KENT MATZUAKI	PRESIDENT	8088425100	economyplumbing@hawaii.rr.com	6 Plumbing, heating and air conditioning	6 \$15.1 million to \$20.5 million	0
Hideo Tanaka Plumbing Inc	336 Eggerking Rd	Kapaa	HI	96746	JAYLORD FUKUMOTO	ESTIMATOR	8088224261	gmftfp@yahoo.com	6 Plumbing, heating and air conditioning	2 \$1 million to \$5 million	0
LTM Corporation dba Civil Iv	99-1233 Halawa Valley Street, Unit B	Aiea	HI	96701	CORI GONO	ADMINISTRATIVE ASSISTANT	8084877094	civil-mechanical@hawaii.rr.com	6 Plumbing, heating and air conditioning	4 \$7.6 million to \$11 million	0
GORDON SHEET METALING	736600 Aaahola St Bay A	Kailua Kona	HI	96740	BEN	PROJECT COORDINATOR	8083297225	benjamin@gordonsheetmetal.com	6 Plumbing, heating and air conditioning	2 \$1 million to \$5 million	0
Pacific Test and Balance, Inc	94-1388 Moaniani St Ste 408	Waipahu	HI	96797	TINA NIXX	PROJECT COORDINATOR	8084882444	info@pacifictab.com	6 Plumbing, heating and air conditioning	2 \$1 million to \$5 million	0
Kauai Welding Inc	3052 Peleke St	Lihue	HI	96766	JESSICA FAITH HUNTER	RECEPTIONIST	8082459340		7 Steel work	6 \$15.1 million to \$20.5 million	0
Cavalier Construction	1448 Auaaki St	Kailua	HI	96734	CYNTHIA MEIXFELL	MANAGER	8082620772		7 Steel work	2 \$1 million to \$5 million	0
Maui Industrial Metal Fabric	PO Box 61	Puunene	HI	96784	ANNE NASON	SALES MANAGER	8088714740	chris@mauiindustrialmetalfabricators.com	7 Steel work	2 \$1 million to \$5 million	0
Harris Rebar South Pacific Inc	91-178 Kalaeloa Blvd Ste B	Kapolei	HI	96707	RHANNON MCGUIRE	HUMAN RESOURCES REP & ESTIMATING	8086862476	spsestimating@harrisrebar.com	7 Steel work	12 \$56.5 million or more	0
Norrie Construction LLC	100 Kio Loop	Kihei	HI	96753	STEWART NORRIE	PRESIDENT	8088798211	norrieconstruction@gmail.com	8 Excavation, site prep, grading and drainage	2 \$1 million to \$5 million	0
JSB Enterprises	256 Lono Ave Apt B	Kahului	HI	96732	JEFFREY	MANAGER	8083578123	jsb71c@gmail.com	8 Excavation, site prep, grading and drainage	1 Less than \$1 million	0
Truth Excavation LLC	P.O. BOX 12075	LAHAINA	HAWAII	96761	SHERLYNN KANHO	OFFICE MANAGER	8082933531	admin@truthexcavation.com	8 Excavation, site prep, grading and drainage	1 Less than \$1 million	0
George M Oye Inc	P.O. BOX 205	KAMUELA	HAWAII	96743	KATON	PRESIDENT	808854062		8 Excavation, site prep, grading and drainage	2 \$1 million to \$5 million	0
R Hurst Excavation	P.O. BOX 904	KILAUEA	HAWAII	96754	RUTH	OFFICE MANAGER	8088282886	rhurstoc@hawaii.rr.com	8 Excavation, site prep, grading and drainage	2 \$1 million to \$5 million	0
E. M. Rivera and Sons, Inc.	P.O. BOX 9031	KAILUA KONA	HAWAII	96745	DUSTI LEE	ASSISTANT TO OWNER/CEO	8083255057	emrsonslnc@aol.com	8 Excavation, site prep, grading and drainage	2 \$1 million to \$5 million	0
Jim Simmons Construction	P.O. BOX 1162	KEALAKEKUA	HAWAII	96750	MAILE	OFFICE STAFF	8083282198	jimssimmonsconst1162@gmail.com	8 Excavation, site prep, grading and drainage	1 Less than \$1 million	0
ROJAC Construction, Inc.	150 Pakana Street	Wailuku	HI	96793	0		8089861105		8 Excavation, site prep, grading and drainage	4 \$7.6 million to \$11 million	0
Northwest Demolition & Di	1149 CORREGIDOR ST	KAPOLEI	HAWAII	96707	DAVID MCCLURE	CONTROLLER	8085856077	dieibelt@nwdemolition.com	9 Wrecking and demolition	9 \$27.6 million to \$36.5 million	0
S. Otake Inc.	44-745 Malulani St	Kaneohe	HI	96744	LOWELL K. BRUELAND REM	RESPONSIBLE MANAGING EMPLOYEE	8082477232	Sotake@hawii.rr.com	9 Wrecking and demolition	1 Less than \$1 million	0
Pacific Concrete Cutting & C	PO Box 662261	Lihue	HI	96766	JONIE	HUMAN RESOURCES MANAGER	8082457171	keith@pccchawaii.com	9 Wrecking and demolition	1 Less than \$1 million	0
PBR Hawaii & Associates, Inc	1001 Bishop Street, ASB Tower, Suite 650	Honolulu	HI	96813	DIONNE TALIA	ASSISTANT TO OWNER/CEO	8085215631	sysadmin@pbrhawaii.com	10 Landscaping and related work including erosion control	3 \$5.1 million to \$7.5 million	0
Takano Nakamura Landscap	1221 Kapiolani Boulevard, No. 600	Honolulu	HI	96814	ERIC PARKER	MANAGER	8085932371	eric@tnhawaii.com	10 Landscaping and related work including erosion control	3 \$5.1 million to \$7.5 million	0
Walters, Kimura, Motoda, Jr	1148 Third Avenue	Honolulu	HI	96816	LAZY	MANAGER	8087395591	wam@wamlarth.com	10 Landscaping and related work including erosion control	1 Less than \$1 million	0
Wahiawa Paving & Grading I	2045 Kamehameha Iv Rd Ste 1	Honolulu	HI	96819	GUZ KANESHIRO	PAVING MANAGER	8088416151	rons@ronshawaii.com	13 Asphalt, concrete or other paving	4 \$7.6 million to \$11 million	0
APPLY-A-LINE LLC	1658 Auiki St	Honolulu	HI	96819	TRENT CAEAN	MANAGER	8088410990	trent@applyaline.com	15 Striping or pavement marking	2 \$1 million to \$5 million	0
Consolidated Painting, LLC	P.O. Box 700598	Kapolei	HI	96707	0	ADMINISTRATION	8086825216		15 Striping or pavement marking	1 Less than \$1 million	0
R & M Painting, LLC	85-780 FARRINGTON HWY #200	WAIANAE	HAWAII	96792	GEORGETTE STEVENS	ESTIMATOR	8086969634	PROJECTSRMPAINING@GMAIL.COM	15 Striping or pavement marking	1 Less than \$1 million	0
Island Wide Concrete Pumpi	BOX 1382	KEAAU	HAWAII	96749	JORDON EPPERSON	OWNER	8089688400	ISLANDWIDECONCRETEPUMPING@HOTMAIL.COM	17 Other Concrete Work	1 Less than \$1 million	0
Concrete Coring Company o	991026 IWAENA ST	AIEA	HAWAII	96701	JESSICA	DIVISION ADMINISTRATOR	8082449411		17 Other Concrete Work	1 Less than \$1 million	0
Foundation International, In	91-227 Hanua Street	Kapolei	HI	96707	WARREN HOLCOMB	PRESIDENT	8086822800	fji@hawaii.rr.com	17 Other Concrete Work	2 \$1 million to \$5 million	0
Omo Construction, Inc.	91-284 Komohana St.	Kapolei	HI	96707	CAROL T.	FACILITATOR	8086821465		17 Other Concrete Work	2 \$1 million to \$5 million	0
Quality General, Inc.	99-1219 Iwena St	Aiea	HI	96701	RYAN WADA	CFO	8084873614	ryan@qualitygeneral.com	17 Other Concrete Work	6 \$15.1 million to \$20.5 million	0
Samson Trucking Inc	87-161 MANUOI OI	WAIANAE	HAWAII	96792	CLIFFORD HILLINGWORTH	SAFETY COORDINATOR	8088642014	cliffc.samsontrucking@gmail.com	21 Trucking and hauling	1 Less than \$1 million	0
A. Lewis Cdl and Trucking Sc	91-1048 KIUPUAKUKUI ST	KAPOLEI	HAWAII	96707	ADRIAN LEWIS	OWNER	8086301097	adrian.lewis808@icloud.com	21 Trucking and hauling	1 Less than \$1 million	0
Kahiau Enterprises LLC	P.O. BOX 335	PUUNENE	HAWAII	96784	CHRISTY	MANAGER	8088703219		21 Trucking and hauling	1 Less than \$1 million	0
Kama Ili Dump Truck Service	P.O. BOX 1992	PAHOA	HAWAII	96778	BRENT MILLER	OWNER	8082174567		21 Trucking and hauling	1 Less than \$1 million	0
S & S Delivery Inc	2856 Ualena St Ste D	Honolulu	HI	96819	TODD SANDERS	OWNER	8088331857	sspaniomovers@aol.com	21 Trucking and hauling	1 Less than \$1 million	0
The Tow Truck LLC	P.O. BOX 583	WAIMAEA	HAWAII	96796	JAMES HENRIQUES	MANAGER	8086519641	dispatch@thetowtruckllc.com	21 Trucking and hauling	1 Less than \$1 million	0
Gerdyn Enterprise, LLC	P.O. BOX 893343	MILILANI	HAWAII	96789	MICHELLE	MEMBER	8083688787	gerdyntentprisesllc@gmail.com	21 Trucking and hauling	2 \$1 million to \$5 million	0
Kuwaye Trucking, Inc.	456 Kalaniana'ole Ave Ste A	Hilo	HI	96720	NELLA	MANAGER	8089352845		21 Trucking and hauling	2 \$1 million to \$5 million	0
T & T Towing and Recovery I	P.O. BOX 684	PEARL CITY	HAWAII	96782	KENNNETH TOM	MANAGER	8084568697	kentom@hawaii.rr.com	21 Trucking and hauling	1 Less than \$1 million	0
B & C Trucking Co., Ltd.	99-1200 Halawa Valley St	Aiea	HI	96701	0	REFUSED	8084877199		21 Trucking and hauling	2 \$1 million to \$5 million	0
Ed Yamashiro Inc	45-552 Kamehameha Hwy Rm A	Kaneohe	HI	96744	0		8082472175		21 Trucking and hauling	2 \$1 million to \$5 million	0
Pineridge Farms, Inc.	855 Umi St	Honolulu	HI	96819	LAURIE MODELSKY	OPERATIONS MANAGER	8088476746	L.MODELSKY@PINERIDGEFARMSINC.COM	21 Trucking and hauling	5 \$11.1 million to \$15 million	0
Ameron Hawaii LLC	2344 Pahounui Drive	Honolulu	HI	96819	KAITO	SALES MANAGER	8088329245	sales@hcd.hawaii.com	31 Asphalt, concrete and other paving materials	1 Less than \$1 million	0
Mid Pac Petroleum, LLC	1132 BISHOP ST STE#2500	HONOLULU	HAWAII	96813	LANCE TANAKA	DIRECTOR OF GOVERNMENT AND PUBLIC	8088827311	lance.tanaka@pappacific.com	34 Petroleum and petroleum products	12 \$56.5 million or more	0
Pacific Marine Technologies	63129 Ibis Ave	Ewa Beach	HI	96706	THERON MOORE	PRESIDENT	8084986191	theron.moore@pacificmarinettechnologies.com	41 Architecture and engineering	1 Less than \$1 million	0
Engineering Associates, LLC	3239 Uialena St	Honolulu	HI	96819	0	MANAGER	8086825000		41 Architecture and engineering	1 Less than \$1 million	0
Wilcox & Barton, Inc.	75 Laiki Pl	Kailua	HI	96734	BOB	SENIOR VICE PRESIDENT	6033694190	brooks@wilcoxandbarton.com	41 Architecture and engineering	1 Less than \$1 million	0
C2a LLC	1629 Kino St Apt D	Honolulu	HI	96819	0		8082163195		41 Architecture and engineering	1 Less than \$1 million	0
Design Systems Internationa	1119 16th Ave	Honolulu	HI	96816	NELSON LAU	PRESIDENT	8082551533	nlau@designsystemsint.com	41 Architecture and engineering	1 Less than \$1 million	0
Sg Ricci Engineering Co., Inc	825 HALEKAUWLA	HONOLULU	HAWAII	96707	STEVE RICCI	RME, RESPONSIBLE MANAGING EMPLOYEE	808087783570	srcci@wcontractinginc.com	41 Architecture and engineering	2 \$1 million to \$5 million	0
Ecd Hawaii, Inc.	1110 University Ave Ste 303	Honolulu	HI	96826	BERT YAMAMOTO	THE OWNER	8089554119		41 Architecture and engineering	1 Less than \$1 million	0
Murar Engineering and Desi	74-5617 Pawai Pl #201	Kailua	HI	96740	KERVIN MURAR	OWNER	8083330999	contact@murarengineering.com	41 Architecture and engineering	1 Less than \$1 million	0
Island Geotechnical Enginee	330 OHUKAI ROAD STE 119	KIHEI	HAWAII	96753	CHARLES BIEGEL	OWNER	8088429526	ige@igehawaii.com	41 Architecture and engineering	1 Less than \$1 million	0



Attachment 1  
Master Availability Database

Fewell Geotechnical Engineer 96-1416 Waihona Pl	Pearl City	HI	96782	FRAN	OFFICE MANAGER	8084556569	sge@sgeitd.com	41 Architecture and engineering	2 \$1 million to \$5 million	0
Makai Ocean Engineering, Ir 41-305 Kalaniana'ole Hwy	Waimanalo	HI	96795	HERMANN KUGELER	BUSINESS DEVELOPMENT MANAGER	8082598871	hermann.kugeler@makai.com	41 Architecture and engineering	1 Less than \$1 million	0
HMS Construction Inc. 2850 Paa St Ste 110	Honolulu	HI	96819	LEONARD HALL	OFFICE MANAGER	8088347934	hadmin@hmspompo.com	41 Architecture and engineering	1 Less than \$1 million	0
Power Engineers, Incorporated 109 Holomua St	Hilo	HI	96720	MICHAEL KANEMOTO	ENGINEER	8083287100	mike.kanemoto@powereng.com	41 Architecture and engineering	1 Less than \$1 million	0
Aptim Government Solution 94-805 Molale Pl	Waipahu	HI	96797	JOHN NICHOLSON	MANAGER	8083713814	John.Nicholson@aptim.com	41 Architecture and engineering	2 \$1 million to \$5 million	0
AECOM 1001 Bishop St Ste 1600	Honolulu	HI	96813	MARTIN NAKASOE	TRANSPORTATION MANAGER	8085297219		41 Architecture and engineering	1 Less than \$1 million	0
WOOD ENVIRONMENT & INF 590 SARRINGTON HIGHWAY SUITE 524-431	KAPOLEI	HAWAII	96707	BIRTE KERSTING-WILSON	PRINCIPAL	8085452462	birte.kerstingwilson@woodplc.com	41 Architecture and engineering	9 \$27.6 million to \$36.5 million	0
Austin, Tsutsumi & Associates 501 Sumner St Ste 521	Honolulu	HI	96817	LEANNA	SALES MANAGER	8085133646	dhayashi@atahawaii.com	41 Architecture and engineering	4 \$7.6 million to \$11 million	0
Awa & Associates, LLC 2353 South Beretania Street	Honolulu	HI	96826	RONALD AWA	MANAGER	8089550747	awal001@hawaii.rr.com	41 Architecture and engineering	1 Less than \$1 million	0
Bills Engineering Inc. 1124 Fort Street Mall Ste 200	Honolulu	HI	96813	LOIS	ADMINISTRATIVE ASSISTANT	8087922022		41 Architecture and engineering	1 Less than \$1 million	0
Bowers - Kubota Consulting 94-408 Akoki St Ste 201a	Waipahu	HI	96797	KIM CASTILLO	BUSINESS DEVELOPMENT	8088367787		41 Architecture and engineering	2 \$1 million to \$5 million	0
Ch2m Hill, Inc. 1132 Bishop St. Ste-110C	Honolulu	HI	96813	ROSS KANEKO	OFFICE MANAGER	8089431133	ross.kaneko@jacobs.com	41 Architecture and engineering	1 Less than \$1 million	0
Clifford Planning & Architect 55 Merchant Street, Suite 3020	Honolulu	HI	96813	BENJAMIN LEE	PRINCIPAL	8085371200	ben.lee@cliffordplanning.com	41 Architecture and engineering	1 Less than \$1 million	0
Coffman Engineers, Inc. 851 FORT ST.	HONOLULU	HAWAII	96813	JOHN THIELST	MANAGER	8772872347	thielst@coffman.com	41 Architecture and engineering	4 \$7.6 million to \$11 million	0
Geolabs, Inc. 2006 Kalihi St	Honolulu	HI	96819	HAWAI	LEAD SECRETARY	8088415064	hawai@geolabs.net	41 Architecture and engineering	6 \$15.1 million to \$20.5 million	0
Engr International, Inc. 1676 Ala Moana Blvd Ste 1210	Honolulu	HI	96815	SASHA SAVICH	OWNER	8082653706	SASHA@ENTRINC.COM	41 Architecture and engineering	1 Less than \$1 million	0
FERRARO CHOI AND ASSOCI 1240 ALA MOANA BLVD., STE 51C	HONOLULU	HAWAII	96814	TROY MIYASATO	PRINCIPAL	8085338880	tm@ferrarochoi.com	41 Architecture and engineering	3 \$5.1 million to \$7.5 million	0
Hawaii Pacific Group, Inc. 1088 Bishop St Ste 2506	Honolulu	HI	96813	SHEREEN EL-KADI	MARKETING MANAGER	8085332092	shereen@hawaiiengineering.net	41 Architecture and engineering	1 Less than \$1 million	0
HDR Hawaiian Pacific Engine 1132 Bishop St Ste 1200	Honolulu	HI	96813	BRYAN	RECEPTIONIST	808676200	shaebryan.slyva@hdrinc.com	41 Architecture and engineering	4 \$7.6 million to \$11 million	0
Healy Tibbitts Builders, Inc. 99-994 IWAENA ST, STE A	AEIA	HAWAII	96701	KARENA TIGRET	OFFICE MANAGER	8086826104		41 Architecture and engineering	1 Less than \$1 million	0
Honusa Engineering Inc. P.O. BOX 851	HANALEI	HAWAII	96714	BRIAN HENNESSY	PRESIDENT	8088267256	brian@honusaengineering.com	41 Architecture and engineering	1 Less than \$1 million	0
Imata and Associates, Inc. 171 Kapiolani Street	Hilo	HI	96720	ED MIHARA	CIVIL ENGINEER	8089356827	ED@IMATA.BIZ	41 Architecture and engineering	1 Less than \$1 million	0
John Hara Associates, Inc. 1018 Kemole Lane	Honolulu	HI	96826	JOHN HARA	OWNER	8085115151	JMH@IHARA.COM	41 Architecture and engineering	1 Less than \$1 million	0
Kai Hawaii, Inc. 50 S Beretania St C119c	Honolulu	HI	96813	MELANIE	OFFICE MANAGER	8085332210	mail@kaihowai.com	41 Architecture and engineering	2 \$1 million to \$5 million	0
Kwack Associates 747 Wililwil St Apt 805	Honolulu	HI	96826	KENNETH KWOCK	PRESIDENT	8089739010	kenneth@kwocassociates.com	41 Architecture and engineering	1 Less than \$1 million	0
Martin & Chock, Inc. 1132 Bishop St Ste 1550	Honolulu	HI	96813	LYLE CARDEN	PRINCIPLE	8085214513	lcarden@martinlchock.com	41 Architecture and engineering	2 \$1 million to \$5 million	0
Masa Fujoka & Associates 98-021 Kamehameha Hwy Ste 337	Aiea	HI	96701	JOANNE ROMANO	SENIOR GEOLOGISTS	8084845366		41 Architecture and engineering	2 \$1 million to \$5 million	0
McE International, Inc. 1360 S Beretania St Ste 400	Honolulu	HI	96814	LINDEY	SECRETARY	8089410955	mcehnl@mciinternational.com	41 Architecture and engineering	2 \$1 million to \$5 million	0
Mechanical Engineers of Ha 50 S Beretania St C208a	Honolulu	HI	96813	LIZ CHENG	DIRECTOR OF HR	8085218981	info@mehcorporation.com	41 Architecture and engineering	2 \$1 million to \$5 million	0
Ibis Networks, Inc. 828 FORT STREET MALL	HONOLULU	HAWAII	96813	BYAN	MANAGER	8085313017		41 Architecture and engineering	5 \$11.1 million to \$15 million	0
Pacific Asia Design Group, Inc 1650 LIUHI STREET SUITE 201	HONOLULU	HAWAII	96817	SARA	ADMINISTRATOR	8085956600	mail@padgroup.com	41 Architecture and engineering	1 Less than \$1 million	0
Palms Hawaiian Architecture L 2970 Kele Street, Suite 115	Lihue	HI	96766	DESIREE	OFFICE MANAGER	8082464796	desiree@palmshawaii.com	41 Architecture and engineering	1 Less than \$1 million	0
Wsp USA Inc. 1001 Bishop St Ste 2400	Honolulu	HI	96813	GENE ALBENO	SENIOR VICE PRESIDENT	8085317094	g.albano@wst.com	41 Architecture and engineering	5 \$11.1 million to \$15 million	0
Traffic Management Consul 1188 Bishop Street, Suite 1907	Honolulu	HI	96813	0	PRINCIPAL	8085360223		41 Architecture and engineering	1 Less than \$1 million	0
Ushijima Architects Inc. 2226 Young Street, Suite A	Honolulu	HI	96826	DAWN TSUKAZAKI	OFFICE MANAGER	8089469544	dawn@ushardc.com	41 Architecture and engineering	2 \$1 million to \$5 million	0
Wimberly Allison Tong & Go 700 BISHOP ST SUITE 800	HONOLULU	HAWAII	96813	TISSANY LEE	OPERATIONS DIRECTOR	8085218888	honolulu@watt.com	41 Architecture and engineering	4 \$7.6 million to \$11 million	0
Ebisu & Associates 1126 12th Ave Ste 305	Honolulu	HI	96816	YOICHI EBISU	OWNER	8087351634	ebisuyassoc@aol.com	41 Architecture and engineering	1 Less than \$1 million	0
Hawaiian Catholic Services, 92-1095 Kakoo Pl	Kapolei	HI	96707	0	OWNER	8086728494		41 Architecture and engineering	1 Less than \$1 million	0
Kn Surveying, LLC 500 Alakawa St Rm 100a	Honolulu	HI	96817	KARL NISHIO	SENIOR PROJECT MANAGER	8085247100	contact@KNSurveying.com	42 Surveying and mapping	1 Less than \$1 million	0
Hawaii Geophysical Services 949 Akapo Ln	Honolulu	HI	96817	PAUL VIERLING	MANAGER	8088453900	paulv@hawaiiigs.com	42 Surveying and mapping	2 \$1 million to \$5 million	0
Akamai Land Surveying Inc. 17529 Haleakala Hwy	Kula	HI	96790	FAITH HARDING	RECEPTIONIST	8088760177	secretary@alkamisurveying.com	42 Surveying and mapping	1 Less than \$1 million	0
Towill, Shigekoka & Associate 2153 N King St Ste 308	Honolulu	HI	96819	0	PRESIDENT	8085383857		42 Surveying and mapping	1 Less than \$1 million	0
Wis Thomas & Associates Ir 75-3749 Kalanua St Ste 201	Kailua Kona	HI	96740	CRYSTAL	OWNER	8083292353	surveys@wtahawaii.com	42 Surveying and mapping	2 \$1 million to \$5 million	0
CONTROLPOINT SURVEYING 615 PIKOI STREET, SUITE 700	HONOLULU	HAWAII	96814	YUE-HONG YEH	OFFICE MANAGER	8085912022		42 Surveying and mapping	3 \$5.1 million to \$7.5 million	0
Rd Calibrations Inc. 134 Nakolo Pl Ste 104	Honolulu	HI	96819	GAMILLO GONZALEZ	TECHNICIAN	8088333499	rdcal@hawaiiantel.net	43 Inspection and testing	1 Less than \$1 million	0
Alfred Anawati 91-607 Malakole St	Kapolei	HI	96707	JACK LAWIS	VICE PRESIDENT/MANAGER	8086821668	manager@aaqpc.com	43 Inspection and testing	1 Less than \$1 million	0
Mid Pacific Testing and Insp 94-547 Ukee St., Ste. 200	Waipahu	HI	96797	JOHN MERRIMAN	VICE PRESIDENT	8086762720	john@mpmhi.com	43 Inspection and testing	2 \$1 million to \$5 million	0
Maui Consulting Services, In 586 Kumulani Dr	Kihei	HI	96753	TERRANCE THRASHER	OWNER	8083459325	mauiconsulting@yahoo.com	44 Construction management	1 Less than \$1 million	0
CUMMING CONSTRUCTION 1132 BISHOP STREET, SUITE 1570	HONOLULU	HAWAII	96813	ANDREW TANTON	MANAGER	8089474525	stanton@corpusa.com	44 Construction management	11 \$38.6 million to \$56.4 million	0
Triton Aquatic Corporation 1640 Paula Dr	Honolulu	HI	96816	KEVIN KELLY	PRESIDENT	8083520742	kkelly@tritonaquatic.com	46 Environmental consulting	1 Less than \$1 million	0
NORTHSHORE CONSULTANT 2091 Round Top Dr	Honolulu	HI	96822	DAVID ROBICHAUX	MANAGER	8083685352	robichaud001@hawaii.rr.com	46 Environmental consulting	1 Less than \$1 million	0
Planning Solutions, Inc. 711 Kapiolani Blvd Ste 950	Honolulu	HI	96813	JIM HAYES	PRESIDENT	8085504483	jim@psi-hi.com	46 Environmental consulting	2 \$1 million to \$5 million	0
Kauai Environmental Inc. 4526 Kuawa Rd	Kilauea	HI	96754	DAVID GEROW	PRESIDENT	8088212501	daveg@kwaiienvironmental.com	46 Environmental consulting	1 Less than \$1 million	0
H. T. Harvey & Associates 745 Fort Street, Suite 2003	Honolulu	HI	96813	PAUL CONRY	SENIOR ASSOCIATE OF ECO.	8089274157	pconry@harveyecology.com	46 Environmental consulting	1 Less than \$1 million	0
Pacific Commercial Services, 91-254 OLAI ST.	KAPOLEI	HAWAII	96707	ANTHONY ROWE	MANAGER	8085454599	anthony.rowe@pschl.com	46 Environmental consulting	4 \$7.6 million to \$11 million	0
Munekyo & Hiraga, Inc. 305 High Street, Suite 104	Wailuku	HI	96793	KARLYNN FUKUDA	EXECUTIVE VICE PRESIDENT	8082442015	karlynn@munekyohiraga.com	91 Other - Professional services	2 \$1 million to \$5 million	0
Lanes Carpet Installation 530 E Uahi Way	Wailuku	HI	96793	RHONDA	ADMINISTRATOR	8082440202	david@lanescarpet.com	99 Other - Construction	1 Less than \$1 million	0
HI Power Solar 98-723 KUAHAO, PLACE A-13	PEARL CITY	HAWAII	96782	CRUZ	VP	8087443003	cruz@hipowersolar.com	89 Other - Construction	2 \$1 million to \$5 million	0
RENEWABLE ENERGY TECHN P.O. BOX 452	KAPAAU	HAWAII	96746	NATHAN WOOD	MANAGER	8086398776	info@nathanwoodgc.com	89 Other - Construction	2 \$1 million to \$5 million	0
Energyman Ltd. 59-003 Haleiwa Pl	Haleiwa	HI	96712	MIKE NEELY	OWNER	8085540634	MR.MIKE.SOLAR@GMAIL.COM	89 Other - Construction	2 \$1 million to \$5 million	0
MAUI BUILT HOMES 490 KENOLIO ROAD #30-102	KIHEI	HAWAII	96753	BRETT SMITH	PRINCIPAL	8089895470		89 Other - Construction	2 \$1 million to \$5 million	0
Imagine Development LLC REFUSED	WAILUA	HAWAII	96791	THIBAUT	OFFICE MANAGER	8088534309	OFFICE@IMAGINEDEVELOPMENT.COM	89 Other - Construction	2 \$1 million to \$5 million	0
Hawaiian Solar & Plumbing 73-5581 Lawehana St Ste 9	Kailua Kona	HI	96740	BETH	OFFICE MANAGER	8083294044		89 Other - Construction	1 Less than \$1 million	0
Hawai Pacific Solar, LLC 2010 Honoapiilani Hwy C1	Lahaina	HI	96761	KATES ANDERSON	ACCOUNTANT	8086611166	CURT@HAWAIIPIFICSOLAR.COM	89 Other - Construction	2 \$1 million to \$5 million	0
Provision Solar, Inc. 69 Railroad Ave Ste A7	Hilo	HI	96720	KIM AUBERSON	SALES MANAGER	8089693281	info@pvthawaii.com	89 Other - Construction	2 \$1 million to \$5 million	0
Pacific Industrial Coatings, L 1725 Kalani St	Honolulu	HI	96819	ROGELIO HERRERA	DIRECTOR OF SALES AND BUSINESS DEVEL	8084408975	info@tizhawaii.us	89 Other - Construction	2 \$1 million to \$5 million	0
Solar Farms LLC 201 Merchant St Ste 2300	Honolulu	HI	96813	GRANT KITANI	MANAGER DIRECTOR	8086876146	grant@solarfarms.com	89 Other - Construction	1 Less than \$1 million	0
CUSTOM METAL WORKS 24 Sand Island Access Road, No. 15	Honolulu	HI	96819	RICK	MANAGER	8088454104	cmwlc808@gmail.com	89 Other - Construction	1 Less than \$1 million	0
ABHE & SVOBODA, INC. 91-161 OLAI ST.	KAPOLEI	HAWAII	96707	LINDA DONAHUE	OFFICE MANAGER	8086824833	LINDA.DONAHUE@ABHEONLINE.COM	89 Other - Construction	1 Less than \$1 million	0

Attachment 1  
Master Availability Database

Alii Flooring, Inc.	99-1016 Iwaena Street	Alaia	HI	96701	KALEO	PRESIDENT	8084875535	89 Other - Construction	2 \$1 million to \$5 million	0
Alii Glass and Metal, Inc.	2159 Lauwilili St.	Kapolei	HI	96707	CYNTHIA ALAGAO	CONTROLLER	8086714571	89 Other - Construction	5 \$11.1 million to \$15 million	0
Expoxy Restoration	1030 Aulua Road	Kailua	HI	96734	DON HERNANDEZ	PRESIDENT	8082308673	89 Other - Construction	1 Less than \$1 million	0
Firetek Pacific LLC	96-1367 Waihona Street	Pearl City	HI	96782	JUNIE MARABELLA	MAJORITY OWNER	8084472640	89 Other - Construction	2 \$1 million to \$5 million	0
Frank Coluccio Construction	91-051 Kaomi Loop	Kapolei	HI	96707	LYNNETTE	OFFICE MANAGER	8086824477	89 Other - Construction	1 Less than \$1 million	0
Harbor Offshore, Inc.	62-212 Kamahoi Place #15	Kamuela	HI	96743	0		8056392205	89 Other - Construction	4 \$7.6 million to \$11 million	0
Honolulu Fire Protection, LLC	94-1388 MOANIANI ST #236	WAIKAPU	HAWAII	96797	BARRY	MANAGER	8086303246	89 Other - Construction	4 \$7.6 million to \$11 million	0
Northshore Exteriors, Inc.	1714 Homerule St	Honolulu	HI	96819	ROB WASTMAN	ESTIMATOR	8082849042	89 Other - Construction	3 \$5.1 million to \$7.5 million	0
Ohana Environmental Const	2968 Uulea Street	Honolulu	HI	96819	DANNY GUIB	QUALITY CONTROL	8088368955	89 Other - Construction	2 \$1 million to \$5 million	0
Road Bore Corporation	91-2461 Coral Sea Road	Kapolei	HI	96707	KIM KALEIKULA	OFFICE MANAGER	8086825363	89 Other - Construction	1 Less than \$1 million	0
Robert M. Kaya Builders, Inc	525 Kokea Street, building B-3	Honolulu	HI	96817	BRITTANY	RECEPTIONIST	8088456477	89 Other - Construction	1 Less than \$1 million	0
Royal Contracting Company	677 Ahua Street	Honolulu	HI	96819	ROLAND EU	PROJECT ENGINEER	8088399006	89 Other - Construction	12 \$56.5 million or more	0
Triton Marine Construction	P.O. Box 103	Alaia	HI	96701	LEIKO NACARIO	OFFICE MANAGER	8084880854	89 Other - Construction	1 Less than \$1 million	0
Margaret Rose Gregory-LLC	99-1204 Halawa Heights Rd	Alaia	HI	96701	0		8084889775	90 Other - Goods and other services	1 Less than \$1 million	0
Cunningham Cabinets	1911 Kalani Street	Honolulu	HI	96819	0	PURCHASER	8088424733	90 Other - Goods and other services	1 Less than \$1 million	0
Design 5 Ltd.	2208 S. Beretania St.	Honolulu	HI	96826	KATHY MIYASHIRO	OFFICE MANAGER	8089558111	90 Other - Goods and other services	2 \$1 million to \$5 million	0
Foo W. Lim & Sons, Inc.	1130 Wilder Avenue, Suite 102	Honolulu	HI	96822	KRISTIN LIM	OFFICE MANAGER	8085215468	90 Other - Goods and other services	1 Less than \$1 million	0
Hawaiian Sign & Design Corp	45-564 Kamehameha Highway #5	Kaneohe	HI	96744	ASHLEY DESOREST	CFO	8082474144	90 Other - Goods and other services	2 \$1 million to \$5 million	0
Solid Surface Technologies	360 Mokauea Street	Honolulu	HI	96819	SHANE WILLSON-SOUTH	VICE PRESIDENT	8088458677	89 Other - Construction	1 Less than \$1 million	0
Window World Inc	2620 Waiwai Loop	Honolulu	HI	96819	MIKE	CUSTOMER SERVICE	8088341114	90 Other - Goods and other services	1 Less than \$1 million	0
Thrive For Life LLC	45-1047 Pahuwai Pl	Kaneohe	HI	96744	DAMIAN SEMENTO	VP	8082262440	91 Other - Professional services	1 Less than \$1 million	0
B and B Pumping Services	LL P.O. BOX 5355	HILO	HAWAII	96720	GARRETT BALBERD	OWNER/MANAGER	8089815251	90 Other - Goods and other services	1 Less than \$1 million	0
Aloha Computer Consulting	66-935 Kaukonahua Rd	Waialua	HI	96791	JACOB VANHOUDEN	OWNER	8083722667	91 Other - Professional services	1 Less than \$1 million	0
Davis Pacific LLC	400 Hobron Ln Apt 1010	Honolulu	HI	96815	MIKE DAVIS	PRESIDENT	8087985073	90 Other - Goods and other services	1 Less than \$1 million	0
Alaia Copy Center	99-115 Alaia Heights Drive, No. 208	Alaia	HI	96701	DAVID	PRESIDENT	8084863819	90 Other - Goods and other services	2 \$1 million to \$5 million	0
Hawaii Modular Space, Inc.	91-2828 Kalaheo Blvd.	Kapolei	HI	96707	DIANE	TRANSPORTATION COORDINATOR	8086825559	90 Other - Goods and other services	1 Less than \$1 million	0
Pacific Legacy, Incorporated	30 Aulike St Ste 301	Kailua	HI	96734	JAMES MCINTOSH	SUPERVISOR	8082634800	91 Other - Professional services	1 Less than \$1 million	0
Powers & Associates	841 Bishop Street, Suite 1910	Honolulu	HI	96813	0	REFUSED	8085362001	90 Other - Goods and other services	1 Less than \$1 million	0
Prosis Hawaii, LLC	1130 NORTH NIMITZ HWY C-303	HONOLULU	HAWAII	96817	JERRY DENTON	OWNER	8084573074	91 Other - Professional services	3 \$5.1 million to \$7.5 million	0
Scientific Consultants Serv	1347 Kapiolani Blvd., Suite 408	Honolulu	HI	96814	BOB	PRESIDENT	8085971182	91 Other - Professional services	2 \$1 million to \$5 million	0
T & M Environmental LLC	94974 PAKELA UNIT #107	WAIKAPU	HAWAII	96797	KALEHUA GISE	MANAGER	8083815652	90 Other - Goods and other services	1 Less than \$1 million	0

Attachment 2  
USDOT Weighted Base Figure Worksheet

**Weighted Base Figure Worksheet Instructions**

1. This worksheet automatically calculates a weighted base figure to use in DBE goal setting on the final page. This worksheet is intended to be used as a tool to help with developing the Step 1 base figure, as described in 49 CFR part 26.45(c). It is not a substitute for the regulations. Detailed instructions on the goal-setting process can be found online at [eCFR.gov](http://eCFR.gov) and the USDOT's Tips for Goal-Setting in the Disadvantaged Business Enterprise (DBE) Program.
2. In order to fill out the tables on this worksheet, you will need the following information:
  - FTA-funded contracting opportunities for the upcoming 3 years. In the narrative description of the methodology, describe the projects, identify the prime- and sub-contracting opportunities and estimated amounts, and break them down into NAICS codes for entry into the table for Step 1 A.
  - Identify the number of DBEs available, and identify the number of all firms available to perform work. In your narrative, include a description of the data you used and how you determined it was the most relevant data available. Enter the numbers into the table for Step 1 B. You may rely on the State-wide DBE Directory and U.S. Census Bureau Business Pattern Data, use a bidder's list, or use other information available to you.
3. Don't forget - once you have calculated a base figure, you must examine all available evidence to determine if an adjustment to the base figure is needed before you arrive at your overall goal. Please refer to 49 CFR 26.45(d) and the Tips for Goal Setting for more information about making adjustments to your goal. Please include a description of all evidence considered and a description of any adjustments made in your narrative description. Any worksheets used to develop Step 2 adjustments should be included in your final goal submission to FTA.



FEDERAL TRANSIT ADMINISTRATION

# Disadvantaged Business Enterprise:

## Goal Setting Methodology and Consultation

May 2018



U.S. Department of Transportation  
Federal Transit Administration

# Presentation Outline

**Section 1** - Purpose of Webinar & About FTA

**Section 2** - DBE Program Objectives

**Section 3** - DBE Goal Setting - Regulatory Requirements

**Section 4** - Step 1 – Develop a Base Figure

**Section 5** - Step 2 – Adjust Your Base Figure

**Section 6** - Race Neutral/Race Conscious Means

**Section 7** - Consultation and Publication

**Section 8** - Summary / Question and Answer Session

## Purpose of Webinar

- o To provide a clear understanding of the **DBE Goal Setting Methodology** process
- o To provide clear guidance on the **required elements in a successful DBE goal.**



U.S. Department of Transportation  
Federal Transit Administration

---

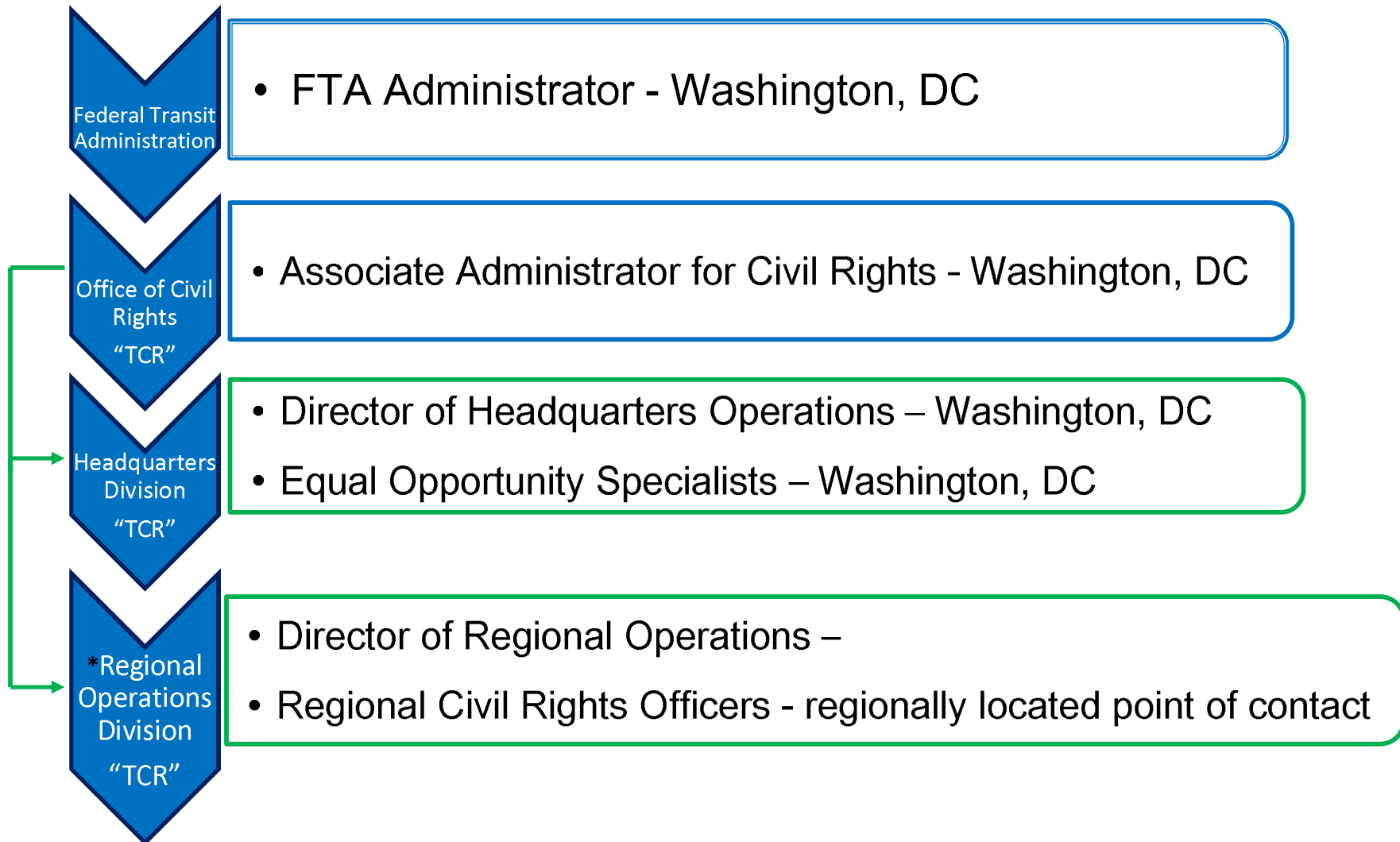
## What FTA Does

The Federal Transit Administration (FTA) provides financial assistance, technical assistance, and oversight to local public transit systems, including

## What FTA Office of Civil Rights (TCR) Does

The Office of Civil Rights (TCR) ensures full implementation of civil rights and equal opportunity initiatives by all recipients of FTA assistance.

# FTA Office of Civil Rights





# FTA Office of Civil Rights (TCR) Programs

Program	Description
Title VI	<ul style="list-style-type: none"><li>• <b>Title VI of the Civil Rights Act of 1964</b> protects people from discrimination based on race, color, and national origin in programs and activities receiving federal financial assistance. <a href="#">(49 CFR Part 21)</a></li></ul>
ADA	<ul style="list-style-type: none"><li>• <b>Americans with Disabilities Act of 1990</b> prohibits discrimination and ensures equal opportunity and access for persons with disabilities. (49 CFR Part:</li></ul>
EEO	<ul style="list-style-type: none"><li>• <b>Title VII of the Civil Rights Act of 1964</b> prohibits employment discrimination based on race, color, religion, sex and national <a href="#">origin</a> (and additional forms of discrimination based upon other nondiscrimination statutes). (49 CFR 21.5(c))</li></ul>
<b>DBE</b> (The focus of this webinar)	<ul style="list-style-type: none"><li>• <b>49 CFR Part 26</b> seeks to ensure nondiscrimination in the award and administration of DOT-assisted contracts in FTA's transit programs and to create a level playing field on which DBEs can compete fairly for DOT-</li></ul>

# Regional Civil Rights Officers (RCRO)

11 RCROs (in 10 Regions) are responsible for ensuring



Title VI



EEO



DBE



The focus of this webinar

# DBE Program Expectations Recipients

---

→ This is YOUR program, you must:

- Prepare & submit a DBE program to FTA, if the threshold is met
- Assess contracts regularly for \$250k threshold
- Work to develop DBE and small business opportunities
- Engage and support the DBE community
- Hold yourself accountable to the DBE requirements
- Hold contractors accountable through contract clauses, on-site monitoring, and other measures

# DBE Goal Expectations Recipients

---

→ This is YOUR program, you must: (continued)

- Submit a DBE Goal to receive FTA funds (if threshold is met)
- Submit goals triennially by August 1 of the assigned year
- Implement your goal, as proposed, each federal fiscal year  
FFY = Oct. 1 to Sep. 30
- Update your goal (and send to FTA) if changes occur
- Report semi-annually on goal progress – June 1 & Dec 1

# Expectations of RCRO/FTA

---

→ What you can expect from FTA:

- Provide technical assistance to you (recipients), as you develop and implement your DBE Goal
- Review your methodology and give feedback if corrections are needed
- Facilitate oversight of your DBE Goal Methodology

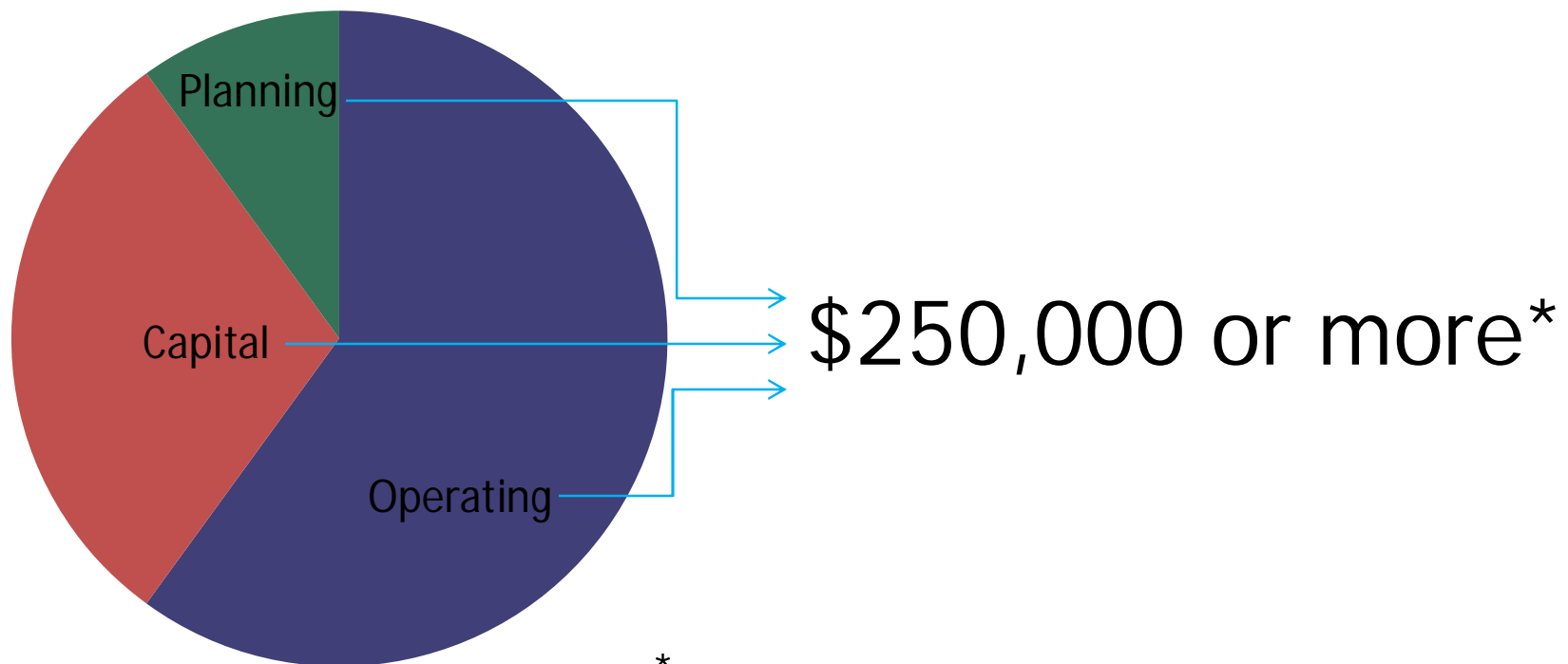
## Objectives of 49 CFR § 26

1. Non-discrimination in DOT-assisted contracts
2. Create a level playing field for DBEs
3. “Narrowly tailored” DOT DBE program
4. Use of eligible firms only (certified DBEs only)
5. Remove barriers to DBE participation
6. Promote the use of DBEs
7. Development of firms to successfully compete
8. Flexibility to recipients to be creative in setting-up their DBE program in their own way

# DBE Goal Setting REGULATORY REQUIREMENTS

# DBE Program Requirement Threshold

49 CFR §26.21(a)(2)



\*Total Contract Awards in the pertaining Federal Fiscal Year, not including intergovernmental agreements

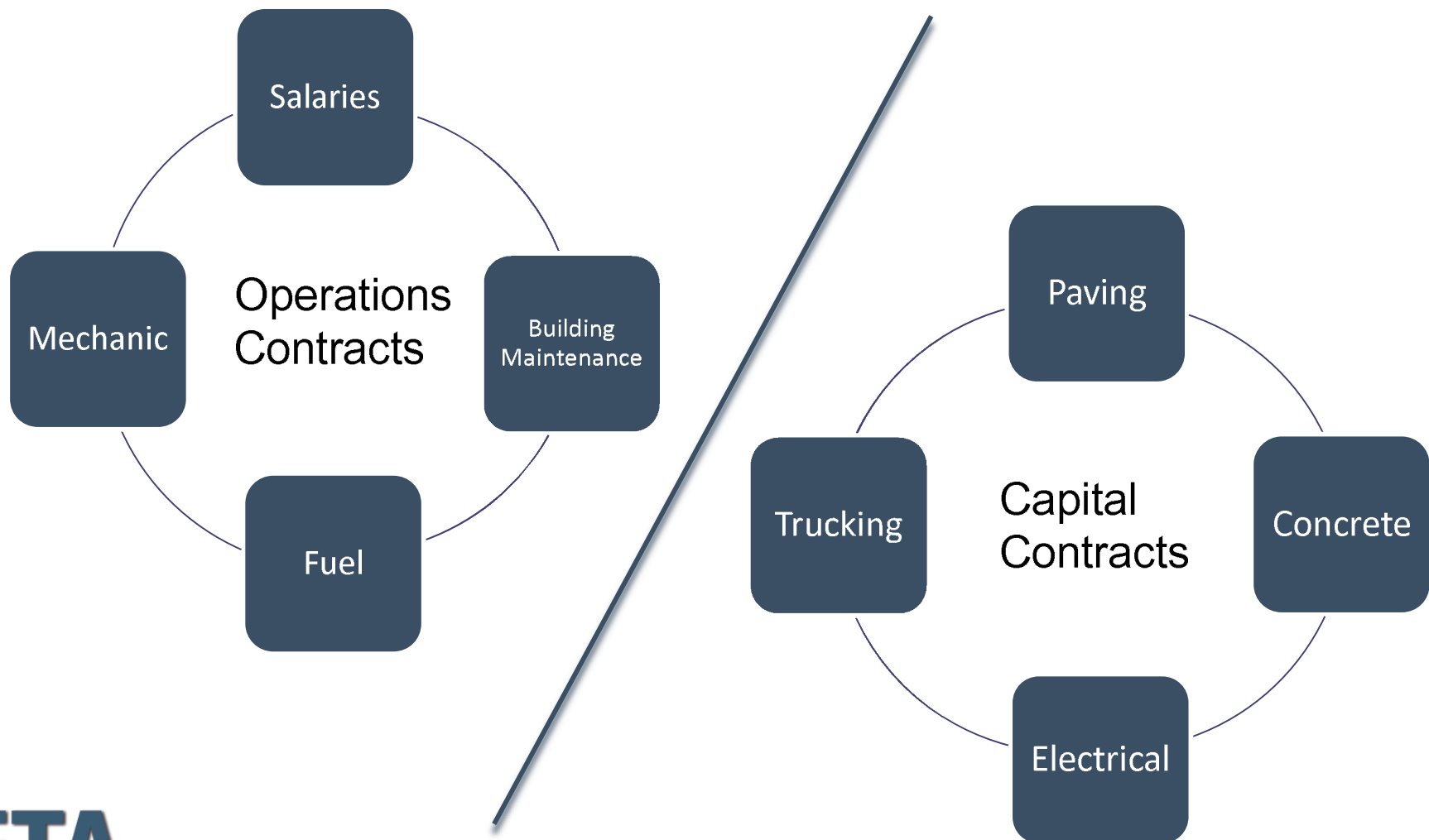


# Goal Setting Requirements

49 CFR §26.45(a) & (b)

1. You must set an overall DBE Goal.
2. The goal must be set based upon *Ready, Willing*, and (RWA) DBEs, relative to all businesses that are RWA to participate on your DOT-assisted contracts.

# Contracts to consider when establishing your goal:



# DBE Goal Setting Methodology:

49 CFR §26.45(c) & (d)

## Two-Step Process

### *Step 1*

Develop a base figure  
for the relative  
availability of DBEs

### *Step 2*

Adjust your base figure

Step 1

# DEVELOP A BASE FIGURE

# Step 1 – Base Figure\*

RWA DBE's

All RWA firms  
(including DBEs and non-DBEs)

\*

# Calculating Your Base Figure: Example Scenario

- Recipient A anticipates spending **\$1 million** resurfacing a parking lot at its bus maintenance facility using **asphalt work (70%)** and **trucking (30%)**
- 10 DBE and 90 non-DBE asphalt companies = 100 total firms  
5 DBE and 20 non-DBE trucking companies = 25 total firms

**Q: What is the Base Figure?**

## Base Figure: Example Answer

Base Figure:

$$15 \text{ total DBEs} / 125 \text{ total firms} = 12\%$$

Do you have any

**QUESTIONS?**

**FTA**

FEDERAL TRANSIT ADMINISTRATION



# Availability of DBEs

- DO:
  - Use all available data
    - State UCP directory
    - Census bureau statistics
    - Disparity studies, bidders' lists, pre-qualification/certification lists, and information from other DOT recipients
    - Accurately account for all contracting opportunities
    - Use apples to apples comparisons via the NAICS Codes

It is recommended to use weighting whenever possible
- DO NOT:
  - Use past participation as your base figure  
Use local preference as it may artificially constrain your LMA

# Apples to Apples Calculation

## YES

concrete paving  
concrete repair

concrete paving  
concrete repair

## NO

concrete paving  
concrete repair

concrete resurfacing  
concrete pumping

# NAICS DATA

NAICS = North American Industry Classification System <http://www.census.gov/eos/www/naics/>

**2 Search results for: concrete**

Number of records found: 117

- [237310](#) Concrete paving (i.e., highway, road, street, public sidewalk)
- [238110](#) Retaining wall (except anchored earth), poured **concrete**, construction
- [238110](#) Grouting (i.e., reinforcing with **concrete**)
- [238110](#) Concrete resurfacing
- [238110](#) Footing and foundation **concrete** contractors
- [238110](#) Foundation, building, poured **concrete**, contractors
- [238110](#) Concrete repair
- [238110](#) Concrete pumping (i.e., placement)
- [230110](#) Concrete pouring

# Base Figure 1A (w/Excel)

## 1A Determine the weight of each type of work by NAICS Code:

\* Enter all the FTA-assisted projects below. Project amounts should be assigned relevant NAICS Code(s).

	NAICS Code	Project	Amount of DOT funds on project:	% of total DOT funds (weight)
1)	324121	Asphalt	\$700,000.00	0.7000
2)	484220	Trucking	\$300,000.00	0.3000
	<b>Total FTA-Assisted Contract Funds</b>		<b>\$1,000,000.00</b>	<b>1</b>

# Base Figure 1B (w/ Excel)

## 1B Determine the relative availability of DBE's by NAICS Code:

\* Use DBE Directory, census data and/or a bidders list to enter the number of available DBE firms & available firms.

	NAICS Code	Project	Number of DBEs available to perform this work	Number of all firms available (including DBEs)	Relative Availability
1)	236210	Asphalt	10	100	0.1000
2)	484220	Trucking	5	25	0.2000
	Combined Totals		15	125	12.00%
					Overall DBE Availability

# Step 1 - Weighted Base Figure \*

-  
x

=

Weighted Base Figure

Repeat and sum equation as needed

\* Highly recommended but not required by regulation

## Calculating Your Base Figure: Example Scenario

- Recipient A anticipates spending **\$1 million** resurfacing a parking lot at its bus maintenance facility using **asphalt work (70%)** and **trucking (30%)**
- 10 DBE and 90 non-DBE asphalt companies = 100 total firms  
5 DBE and 20 non-DBE trucking companies = 25 total firms

**Q: What is the Weighted Base Figure?**

# Weighted Base Figure: Example Answer

- Base Figure:

$$15 \text{ total DBEs} / 125 \text{ total firms} = 12\%$$

## Weighted Base Figure:

$$.7(10 \text{ asphalt DBEs} / 100 \text{ total}) + .3(5 \text{ trucking DBEs} / 25 \text{ total}) = 13\%$$



Asphalt

$$7\% + 6\% = 13\%$$

Trucking



# Base Figure 1C (w/ Excel)

1C (Weight) x (Availability) = Weighted Base Figure						
	NAICS Code	Project	Weight	x	Availability	Weighted Base Figure
1)	236210	Asphalt	0.70000	x	0.10000	0.0700
2)	484220	Trucking	0.30000	x	0.20000	0.0600
					<b>Total</b>	0.1300
					Expressed as a % (*100)	13.00%
			<b>Rounded, Weighted Base Figure:</b>			<b>13%</b>

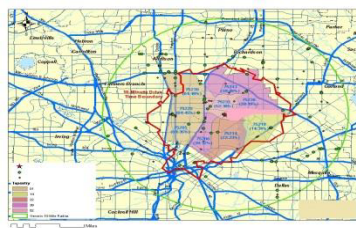
Do you have any

**QUESTIONS?**

**FTA**

FEDERAL TRANSIT ADMINISTRATION

# Local Market Area



- Narrative: fully describe how you defined your LMA
- LMA is not just your political and/or service catchment area boundaries
- LMA includes the location of the majority of contractors and subcontractors

# Defining Contracting Opportunities

- Break the contracting opportunities down by geographic area

Organize the contracting opportunities by six-digit NAICS codes



# Goal-Setting Takeaways

- ★ Describe your goal methodology as if the reader has never heard about the DBE program before (26.45(f)(3))
- ★ Show and describe your work in detail
- ★ Use plain language

Step 2

# ADJUST YOUR BASE FIGURE

# Requirements of Step 2

49 CFR §26.45(d)

1. You must examine all evidence available in your jurisdiction to determine if an adjustment to the base figure is needed.
2. If the evidence does not suggest an adjustment is necessary, then an adjustment is not required.

# Evidence You Must Consider

49 CFR §26.45(d)(1)



- Past participation
- Evidence from disparity studies
- Statistical disparities relating to financing, bonding and insurance
- Data on employment, self-employment education and training, and union apprenticeship programs

Other data at your discretion



# Past Participation

49 CFR §26.45(d)(1)(i)

- Can use past participation ***only if*** contracting opportunities are similar to those in prior years
  - demonstrate the similarity of the projects (past and present) through detailed descriptions
  - determine median past participation (use data from the last three to five years)then add the base figure to the median and divide by 2

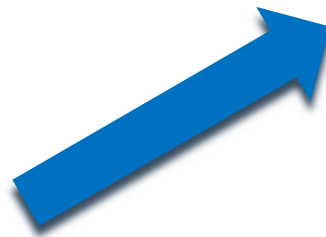
## Step 2 – Adjust Base Figure

### Past participation:

2014 - 14%

2015 - 3%

2016 - 7%



### Historical median:

(3, 7, 14,) = 7%

Base Figure: 13%

Sum:

DBE GOAL?:

10%

# Considering All Evidence

49 CFR §26.45(d)(1)



- Evidence from disparity studies
  - Statistical disparities relating to financing, bonding and insurance
  - Data on employment, self-employment education and training, and union apprenticeship programs
- Other data at your discretion

# Please Remember!

- ★ Describe your goal methodology as if the reader has never heard about the DBE program before (26.45(f)(3))
- ★ Show and describe your work in detail
- ★ Use plain language
- ★ Any adjustments you make in Step 2 must be numerically supported

Do you have any

**QUESTIONS?**

**FTA**

FEDERAL TRANSIT ADMINISTRATION

Meeting Overall Goals

**RACE NEUTRAL AND RACE  
CONSCIOUS MEANS**

# Meeting Overall Goals

49 CFR §26.51(a) & (d)

## Two Methods

**Race Neutral**  
=  
Contract Competitively Awarded

- Recipients must meet the maximum feasible portion of their overall goal by race neutral means

**Race Conscious**  
=  
Contract Goals

- You set a goal on each contract for the prime to meet
- If the goal is not met, the prime is in violation of the contract

# Facilitating *Race Neutral* Methods of Achieving DBE Participation

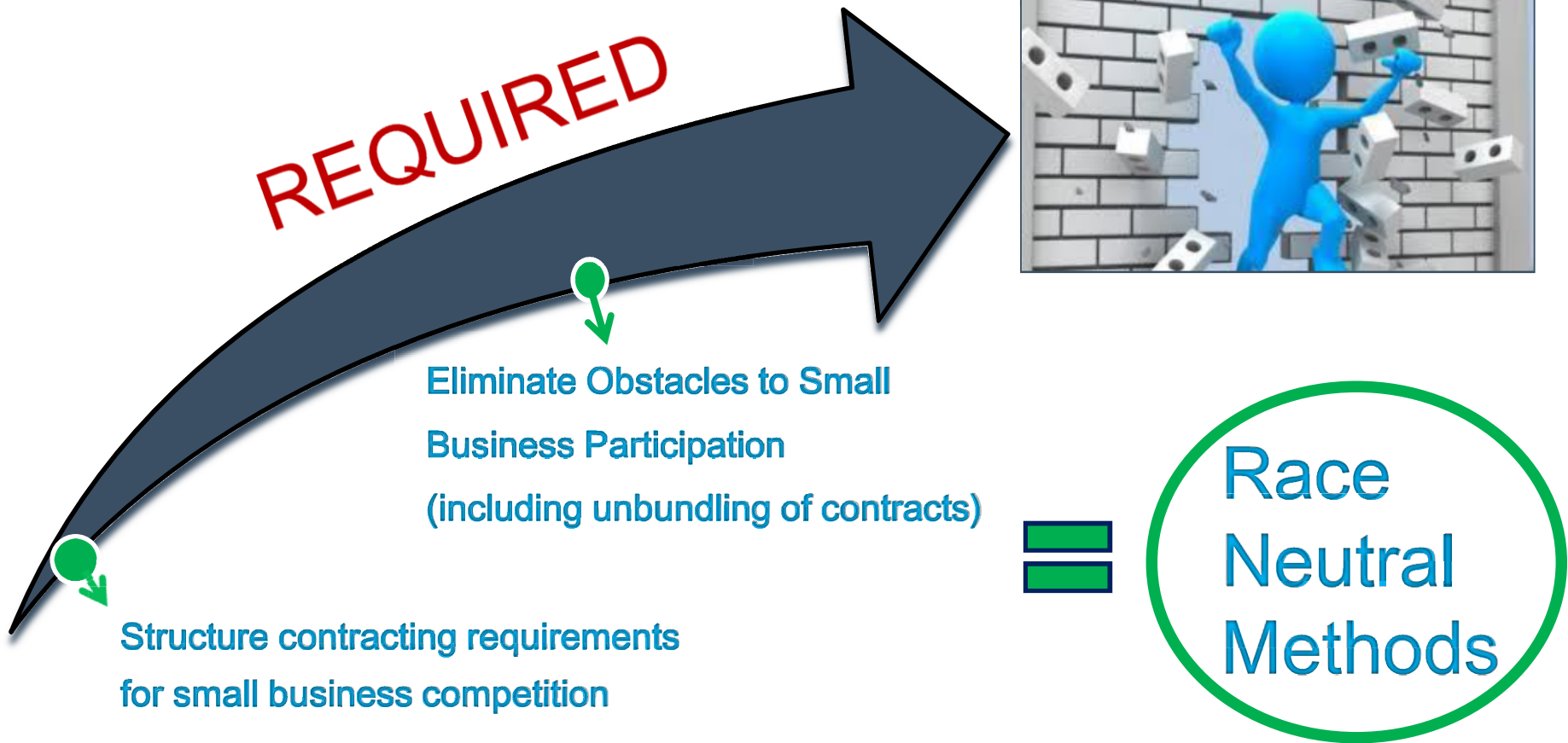
- Utilize DBE prime contractors
- Make RFPs/solicitations attractive to DBEs
- Unbundling of contracts
- Simplify or reduce bonding requirements
- Outreach to/for DBEs
- Distribute DBE directories to prime contractors
- Strengthen required

(49 CFR 26.35/26.39)



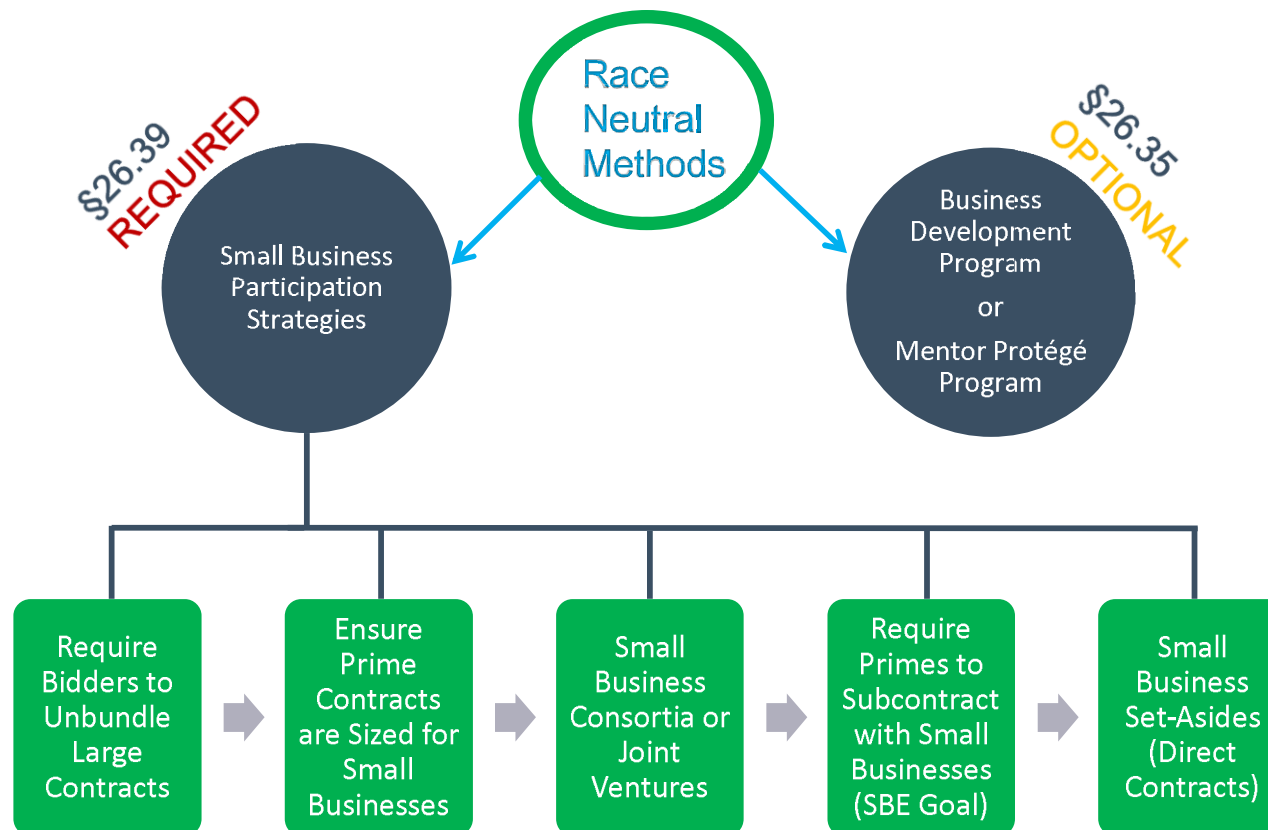
# Fostering Small Business Participation

49 CFR §26.39



# Small Business Participation Strategies

49 CFR §26.35 & 26.39



(Your program may include, but is not limited to, these strategies.)

# *Race Conscious* Methods of DBE Participation: Contract Goals

- Use only when you cannot meet goal through race-neutral methods
- Use only on DOT-assisted contracts with subcontracting opportunities
- Not required on all contracts
- Tailor contract goals - need not match overall goal
- Adjust contract goals based on DBE achievement
  - Increase or decrease race-conscious contracts based upon your **actual** and **current** race-neutral DBE achievement

# Formula for Calculating RN/RC Split

1. **Relative RN Attainment =**

$$\frac{\text{RN Attainment by \$ (or by \%)}}{\text{Overall DBE Achievement by \$ (or by \% )}}$$



2. **Absolute RN Attainment =**

$$\times \text{Proposed Overall Goal by \%}$$



3. **RC Split =**

$$\text{Proposed Overall Goal by \%} - \text{Absolute RN Attainment by \%}$$

# Calculating Race-Neutral and Race-Conscious Splits

- Adjust based upon **past participation** from prime and subcontractors
- **Example for “Grantee A”:**
  - **Overall Awards:** \$500,000
  - **Overall DBE Goal** for FFY 13-15 was \$60,000 (or 12%)
  - **Overall DBE Achievement** by dollar amount: \$40,000 (or 8%)
  - **RN Attainment** by dollar amount: \$30,000 (or 6%)
  - **Proposed Goal** for FFY 16 – 18 is 10%

**Q: What should Grantee A's race conscious and race neutral splits be for FFY 15-17?**

# Formula for Calculating RN/RC Split

## 1. Relative RN Attainment

$$\frac{\text{RN Attainment } \$30,000 \text{ (or 6\%)}}{\text{Overall DBE Achievement } \$40,000 \text{ (or 8\%)}} = 75\%$$



## 2. Absolute RN Attainment

$$75\% \text{ (Relative RN Attainment)} \times 10\% \text{ (Proposed Goal)} = 7.5\%$$



## 3. RC Split

$$10\% \text{ (Proposed Goal)} - 7.5\% \text{ (Absolute RN Attainment)} = 2.5\%$$

Do you have any

**QUESTIONS?**

**FTA**

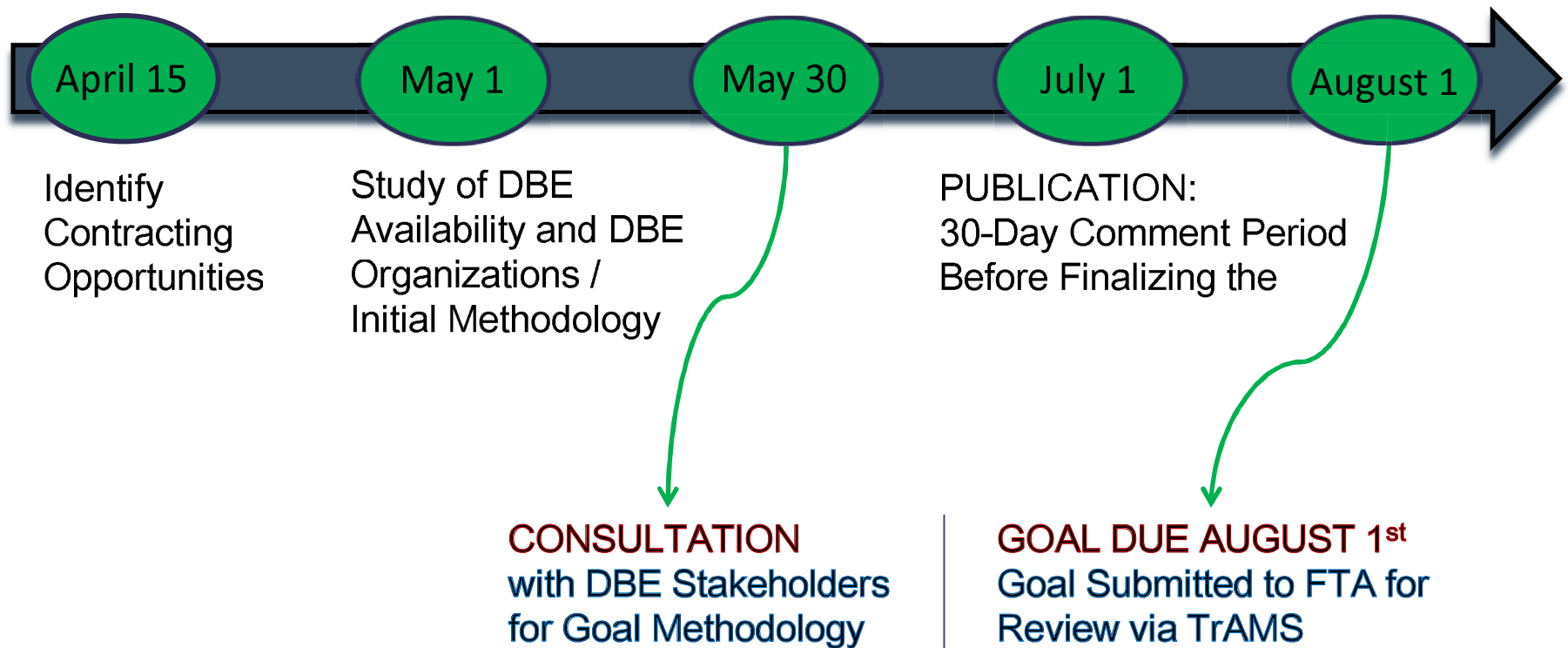
FEDERAL TRANSIT ADMINISTRATION

# Establishing an Overall Goal

## CONSULTATION AND PUBLICATION



# Sample Goal Submittal Timeline



# DBE Consultation Stakeholders

49 CFR §26.45(g)(1)(i)

- Minority and women business associations and general contractor groups
- Community organizations



Other grantees with established  
DBE relationships

# Additional Consultation Stakeholders

49 CFR §26.45(g)(1)(i)

- Small business associations
- Chambers of commerce
- Contractor associations



Unions

# What Does Consultation Look Like?

49 CFR §26.45(g)(1)(i)

1. Interactive stakeholder outreach events
2. Actively advertise the events by seeking-out and directly contacting stakeholders
3. Document your efforts to search for DBE attendees to invite to your outreach events

## What Does Consultation Look Like? (cont.)

4. Keep an invitation and attendance record for meetings
5. Document comments from participants and how those comments effected the goal methodology process
6. Openly share your methodology and continuously engage stakeholders throughout the year

# Published Notice

49 CFR §26.45(g)(1)(ii) & (2)

## Required

- Post Proposed Overall Goal to Website (Pre-Submission to FTA)
- Post Overall Goal Changes to Website (Post-Submission to FTA)

## Discretionary

- Post Overall Goal to Other Media Sources
- 30-Day Comment Period for Proposed Overall Goal

Do you have any

**QUESTIONS?**



FEDERAL TRANSIT ADMINISTRATION

Is there other information you might need to be effective?

## QUESTION AND ANSWER SESSION



# Reminder: DBE Goal Submission

- **Due Date:** Triennial goals are due to FTA on August 1st
- **What do you need to submit to FTA?**
  1. Copy of the methodology
    - E.g., worksheet, spreadsheet, charts, etc.
    - Show your work through NARRATIVE and MATH
  2. R/N and R/C split
  3. Documented details of your entire consultation process
  4. A required published notice to your website regarding your proposed goal, prior to submission to FTA, for a discretionary comment period (minimum 30 days recommended) **Please provide a screen-shot of website or a “live link” of your website.**

# Useful Websites

## **USDOT Tips on Goal Setting**

<https://www.transportation.gov/osdbu/disadvantaged-business-enterprise/tips-goal-setting-disadvantaged-business-enterprise>

## **FTA –Civil Rights Training Materials**

<http://www.fta.dot.gov/civilrights/12885.html>

## **County Business Patterns**

<https://www.census.gov/programs-surveys/cbp.html>

## **NAICS Codes**

<http://www.census.gov/eos/www/naics/index.html>

## **OSDBU State DOT and DBE Program Sites**

<https://www.transportation.gov/osdbu/disadvantaged-business-enterprise/state-dot-and-dbe-program-websites>

# FTA Regional Civil Rights Officers

Region 1: Peggy Griffin at [margaret.griffin@dot.gov](mailto:margaret.griffin@dot.gov)

Region 2 & 3: Lynn Bailey at [lynn.bailey@dot.gov](mailto:lynn.bailey@dot.gov)

Region 4: Dee Foster at [doretha.foster@dot.gov](mailto:doretha.foster@dot.gov)

Region 5: Marjorie Hughes at [marjorie.hughes@dot.gov](mailto:marjorie.hughes@dot.gov)

Region 6: Chris MacNeith at [christopher.macneith@dot.gov](mailto:christopher.macneith@dot.gov)

Region 7 & 8: Morgan Hecht at [morgan.hecht@dot.gov](mailto:morgan.hecht@dot.gov)

Region 9: Lynette Little at [lynette.little@dot.gov](mailto:lynette.little@dot.gov)

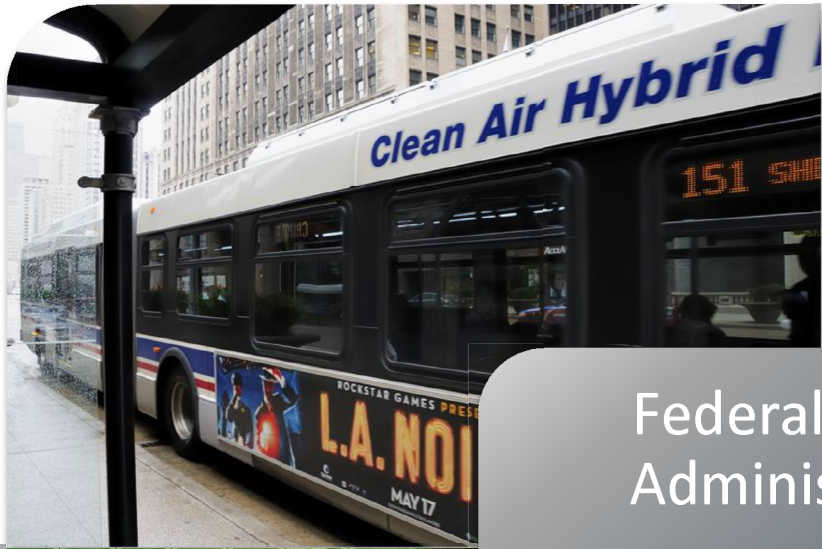
Region 10: Chris MacNeith at [christopher.macneith@dot.gov](mailto:christopher.macneith@dot.gov)

Oversight: Marisa Appleton at [marisa.appleton@dot.gov](mailto:marisa.appleton@dot.gov)

# Webinar Evaluation: Please Provide Us Your Feedback

Link to Survey:

<https://goo.gl/forms/Jzm6fxJ0yWhavRPU2>



Federal Transit  
Administration  
Contact Us Tool  
[www.transit.dot.gov](http://www.transit.dot.gov)



**FTA**

FEDERAL TRANSIT ADMINISTRATION

Attachment 4  
Calculation of Relative Availability

**Step 1 - Determine the weight of each type of work by NAICS Code:**

\* Enter all the FTA-assisted projects below. Project amounts should be assigned relevant NAICS Code(s).

	NAICS Code	NAICS Category	Amount of DOT funds on project:	% of total DOT funds (weight)
1)	485133	Bus and Other Motor Vehicle Transit Systems	\$28,457,500.00	0.6352
2)	236220	Assembly	150,000	0.0033
3)	237310	Asphalt	150,000	0.0033
4)	423320	Provision of parts, materials or doing small tasks like cement	150,000	0.0033
5)	541330	Consultant some of the design	50,000	0.0011
6)	541370	Surveying	50,000	0.0011
7)	541611	Consultant doing some of the planning	50,000	0.0011
8)	811192	Bus washing	300,000	0.0067
9)	561720	Clean up	25,000	0.0006
10)	561990	Customer service	100,000	0.0022
11)	541614	Dispatching	180,000	0.0040
12)	541910	Mystery shopper	25,000	0.0006
13)	424120	Office supplies	17,500	0.0004
14)	444190	Provision of equipment	200,000	0.0045
15)	541910	Public engagement	40,000	0.0009

Attachment 4  
Calculation of Relative Availability

16)	428330	Safety equipment	5,000	0.0001
17)	812331	Uniforms	50,000	0.0011
18)	2362	Nonresidential Building Construction	11,130,665	0.2485
19)	541512	Computer Systems Design Services	1,466,424	0.0327
20)	5413	Architectural, Engineering, and Related Services	1,381,840	0.0308
21)	541990	All Other Professional, Scientific, and Technical Services	800,000	0.0179
22)	561720	Janitorial Services	20,000	0.0004
23)				0.0000
24)				0.0000
25)				0.0000
26)				0.0000
27)				0.0000
28)				0.0000
29)				0.0000
30)				0.0000

Attachment 4  
Calculation of Relative Availability

31)				0.0000
32)				0.0000
33)				0.0000
34)				0.0000
35)				0.0000
	<b>Total FTA-Assisted Contract Funds</b>		<b>\$44,798,929</b>	<b>1</b>



Attachment 4  
Calculation of Relative Availability

**Step 2 - Determine the relative availability of DBE's by NAICS Code:**

\* Use DBE Directory, census data and/or a bidders list to enter the number of available DBE firms and the number of available firms.

	NAICS Code	NAICS Category	Number of DBEs available to perform this work	Number of all firms available (including DBEs)	Relative Availability
1)	485133	Bus and Other Motor Vehicle Transit Systems	0	0	
2)	236220	Assembly	9	106	0.0849
3)	237310	Asphalt	4	35	0.1143
4)	423320	Provision of parts, materials	1	4	0.2500
5)	541330	Consultant some of the design	8	71	0.1127
6)	541370	Surveying	8	52	0.1538
7)	541611	Consultant doing some of the planning	3	20	0.1500
8)	811192	Bus washing	0	0	
9)	561720	Clean up	0	0	
10)	561990	Customer service	0	0	
11)	541614	Dispatching	0	0	
12)	541910	Mystery shopper	0	0	
13)	424120	Office supplies	0	0	
14)	444190	Provision of equipment	0	0	
15)	541910	Public engagement	0	0	

Attachment 4  
Calculation of Relative Availability

16)	428330	Safety equipment	0	0	
17)	812331	Uniforms	0	0	
18)	2362	Nonresidential Building Construction	9	106	0.0849
19)	541512	Computer Systems Design Services	0	0	
20)	5413	Architectural, Engineering, and Related Services	8	71	0.1127
21)	541990	All Other Professional, Scientific, and Technical Services	3	20	0.1500
22)	561720	Janitorial Services	0	0	
23)					
24)					
25)					
26)					
27)					
28)					
29)					
30)					

Attachment 4  
Calculation of Relative Availability

31)						
32)						
33)						
34)						
35)						
	<b>Combined Totals</b>		<b>53</b>	<b>485</b>	0.1093	<b><i>Overall availability of DBEs</i></b>

Attachment 4  
Calculation of Relative Availability

**Step 3 - (Weight) x (Availability) = Weighted Base Figure**

	NAICS Code	NAICS Category	Weight	x	Availability	Weighted Base Figure
1)	485133	Bus and Other Motor Vehicle Transit Systems	0.63523	x		
2)	236220	Assembly	0.00335	x	0.08491	0.0003
3)	237310	Asphalt	0.00335	x	0.11429	0.0004
4)	423320	Provision of parts, materials or doing small tasks like cement	0.00335	x	0.25000	0.0008
5)	541330	Consultant some of the design	0.00112	x	0.11268	0.0001
6)	541370	Surveying	0.00112	x	0.15385	0.0002
7)	541611	Consultant doing some of the planning	0.00112	x	0.15000	0.0002
8)	811192	Bus washing	0.00670	x		
9)	561720	Clean up	0.00056	x		
10)	561990	Customer service	0.00223	x		
11)	541614	Dispatching	0.00402	x		
12)	541910	Mystery shopper	0.00056	x		
13)	424120	Office supplies	0.00039	x		
14)	444190	Provision of equipment	0.00446	x		
15)	541910	Public engagement	0.00089	x		
16)	428330	Safety equipment	0.00011	x		

Attachment 4  
Calculation of Relative Availability

17)	812331	Uniforms	0.00112	x		
18)	2362	Nonresidential Building Construction	0.24846	x	0.08491	0.0211
19)	541512	Computer Systems Design Services	0.03273	x		
20)	5413	Architectural, Engineering, and Related Services	0.03085	x	0.11268	0.0035
21)	541990	All Other Professional, Scientific, and Technical Services	0.01786	x	0.15000	0.0027
22)	561720	Janitorial Services	0.00045	x		
23)				x		
24)				x		
25)				x		
26)				x		
27)				x		
28)				x		
29)				x		
30)				x		
31)				x		

Attachment 4  
Calculation of Relative Availability

32)				x		
33)				x		
34)				x		
35)				x		
					<b>Total</b>	0.0292
					<b>Expressed as a % (*100)</b>	2.92%
					<b>Rounded, Weighted Base Figure:</b>	<b>3%</b>

## Attachment 4

### Calculation of Relative Availability

HDOT FTA future projects  
DBE availability based on 2019 availability survey

[illegible]