

JOSH GREEN, M.D.  
GOVERNOR  
KE KIA'ĀINA



EDWIN H. SNIFFEN  
DIRECTOR  
KA LUNA HO'OKELE

Deputy Directors  
Nā Hope Luna Ho'okele  
DREANALEE K. KALILI  
TAMMY L. LEE  
CURT T. OTAGURO  
ROBIN K. SHISHIDO

STATE OF HAWAII | KA MOKU'ĀINA 'O HAWAII  
DEPARTMENT OF TRANSPORTATION | KA 'OIHANA ALAKAU  
AIRPORTS  
400 RODGERS BOULEVARD, SUITE 700  
HONOLULU, HAWAII 96819-1880

IN REPLY REFER TO:

AIR-PM 24.0688

October 10, 2024

DOT Land Matters  
State of Hawaii  
Honolulu, Hawaii

ISSUANCE OF A REVOCABLE PERMIT FOR AIRCRAFT PARKING  
GEORGE'S AVIATION SERVICES, INC.  
DANIEL K. INOUE INTERNATIONAL AIRPORT  
TAX MAP KEY: (1) 1-1-76: PORTION OF 23

OAHU

APPLICANT:

George's Aviation Services, Inc., whose business address is 18 Lagoon Drive,  
Honolulu, Hawaii 96819.

LEGAL REFERENCE:

Hawaii Revised Statutes (HRS), Sections 26-19 and 171-2, as amended.

LOCATION AND TAX MAP KEY:

A portion of Daniel K. Inouye International Airport (Airport), identified as South Ramp,  
identified by Tax Map Key: 1<sup>st</sup> Division, 1-1-76: portion of 23.

AREA:

Area/Space No. 423-186H, containing an area of approximately 2,340 square feet,  
as shown and delineated on the attached map labeled Exhibit A.

ZONING:

State Land Use District: Urban  
City and County of Honolulu LUO: Industrial (I-2)

ISSUANCE OF A REVOCABLE PERMIT FOR AIRCRAFT PARKING  
GEORGE'S AVIATION SERVICES, INC.

Page 2

LAND TITLE STATUS:

Section 5(a) lands of the Hawaii Admissions Act: Non-ceded  
DHHL 30% entitlement lands pursuant to the Hawaii State Constitution: YES \_\_\_ NO X

CURRENT USE STATUS:

Land presently encumbered by Governor's Executive Order No. 3201, dated June 8, 1983, setting aside 3,152.177 acres designated as the Airport under the control and management of the State of Hawaii, Department of Transportation (HDOT) for Airport purposes.

CHARACTER OF USE:

Aircraft Tie-Down (2018 Cessna Skyhawk 172S, Tail No. N-176TA).

COMMENCEMENT DATE:

To be determined by the Director of Transportation at a later date.

MONTHLY RENTAL:

\$205.00 (as determined from the HDOT schedule of rates and charges established by appraisal of Airports property statewide)

SECURITY DEPOSIT:

\$615.00, or three times the monthly rental in effect.

DCCA VERIFICATION:

Place of business registration confirmed:	YES <u>X</u>	NO ___
Registered business name confirmed:	YES <u>X</u>	NO ___
Good standing confirmed:	YES <u>X</u>	NO ___

CHAPTER 343, HRS - ENVIRONMENTAL ASSESSMENT:

The environmental impacts of the proposed action to the subject land area is covered by the Honolulu International Airport, Airport Modernization Program Environmental Assessment (EA), State Project No. AO1030-13. The EA is a joint State and Federal document dated January 2013, and published in the February 8, 2013 issue of the OEQC Bulletin. Accordingly, the actions have been determined to have little or no impact upon the environment.

ISSUANCE OF A REVOCABLE PERMIT FOR AIRCRAFT PARKING  
GEORGE'S AVIATION SERVICES, INC.

Page 3

REMARKS:

HDOT proposes to issue a month-to-month parking permit to George's Aviation Services, Inc., for use of aircraft tie-down parking situated at the Airport.

RECOMMENDATION:

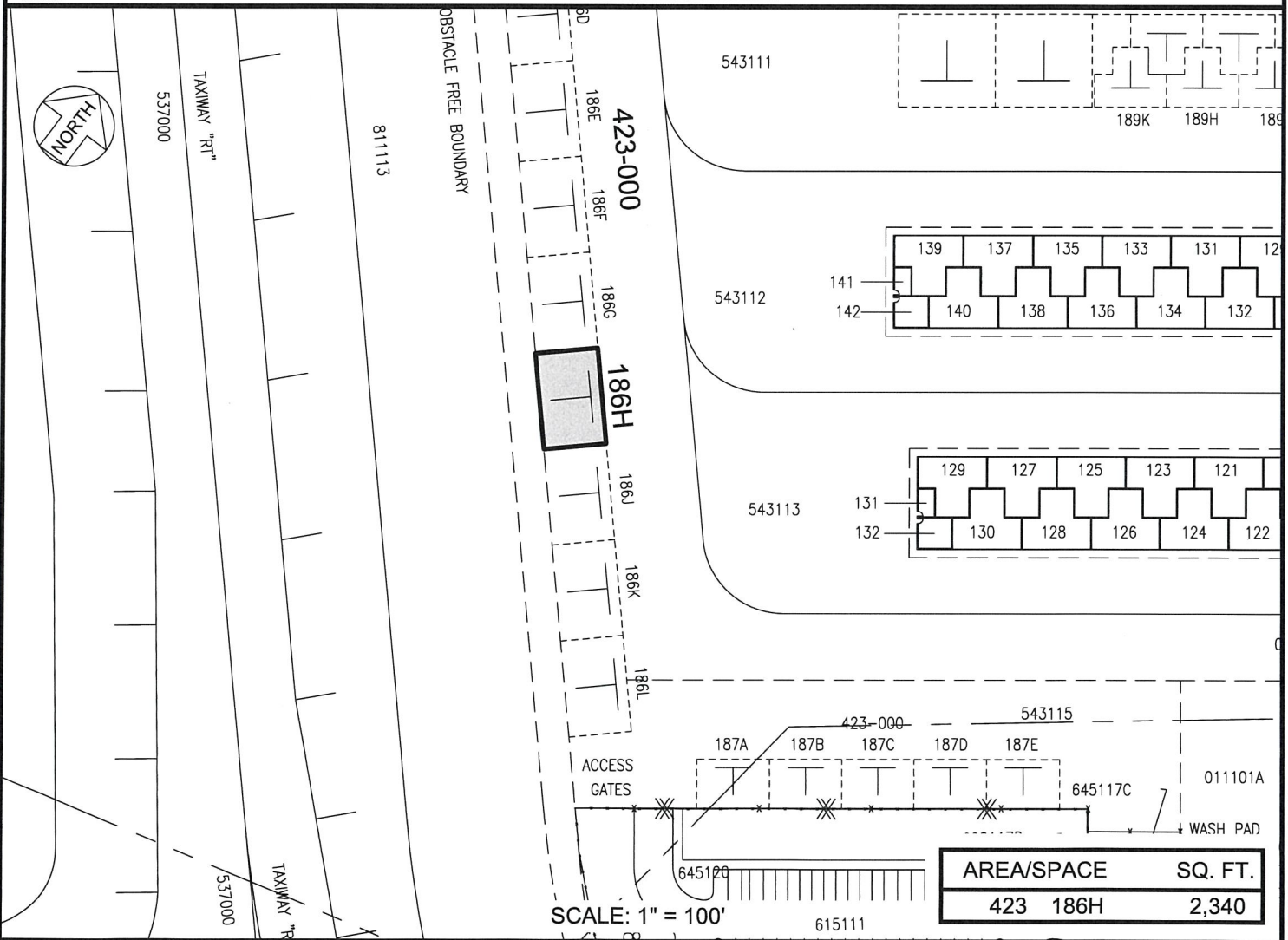
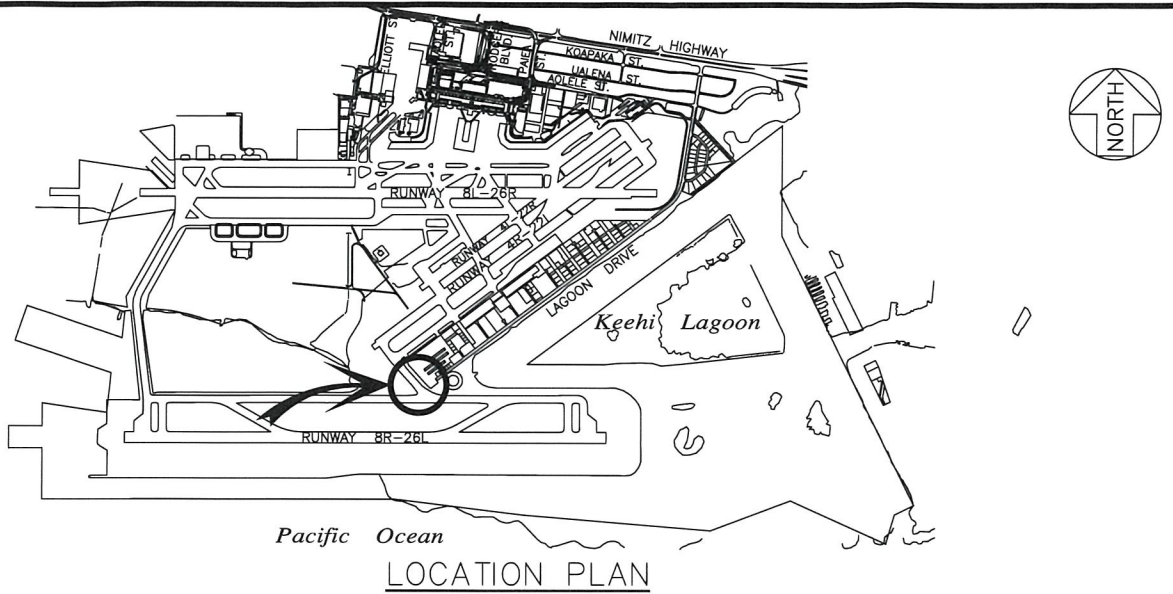
Based on this submittal, and testimony and facts presented, the HDOT recommends the Director of Transportation finds that approving the issuance of a month-to-month aircraft Parking Permit to George's Aviation Services, Inc. including its conditions and rent, will best serve the interests of the State.

Respectfully submitted,



CURT T. OTAGURO  
Deputy Director of Transportation for Airports

Attachment



PP-24-0005

DATE : JULY 2024

EXHIBIT: **A**



AIRPORTS

GEORGE'S AVIATION SERVICES, INC.

TIE-DOWN

423186H

DANIEL K. INOUE INTERNATIONAL AIRPORT

N:\AIRPORTS\HNL\_HONOLULU\CAD\PM\HNL\_423186H-01.DWG