

JOSH GREEN, M.D.
GOVERNOR
KE KIA'ĀINA



EDWIN H. SNIFFEN
DIRECTOR
KA LUNA HO'OKELE

Deputy Directors
Nā Hope Luna Ho'okele
DREANALEE K. KALILI
TAMMY L. LEE
CURT T. OTAGURO
ROBIN K. SHISHIDO

**STATE OF HAWAII | KA MOKU'ĀINA 'O HAWAI'I
DEPARTMENT OF TRANSPORTATION | KA 'OIHANA ALAKAU
AIRPORTS
400 RODGERS BOULEVARD, SUITE 700
HONOLULU, HAWAII 96819-1880**

IN REPLY REFER TO:

AIR-PM 24.0713

October 24, 2024

DOT Land Matters
State of Hawaii
Honolulu, Hawaii

ISSUANCE OF A REVOCABLE PERMIT FOR
TWO TIE-DOWNS FOR AIRCRAFT PARKING
CIVIL AIR PATROL
KAWAIHAPAI AIRFIELD, WAIALUA, HAWAII
TAX MAP KEY: (1) 6-8-014:001 (PORTION)

OAHU

REQUEST:

Issuance of a revocable permit for Aircraft Parking (Parking Permit) to Civil Air Patrol (CAP), situated at Kawaihapai Airfield.

APPLICANT:

CAP, whose mailing address is 419 Lele Street, Honolulu, Hawaii 96819.

LEGAL REFERENCE:

Hawaii Revised Statutes (HRS), Section 26-19 and 171-2, as amended.

LOCATION AND TAX MAP KEY:

A portion of Kawaihapai Airfield, Waialua, Island of Oahu, State of Hawaii, identified by Tax Map Key: 1st Division, 6-8-014:001 (portion).

AREA:

Area/Space No. 405-110, containing an area of approximately 1,890 square feet; and
Area/Space No. 405-111, containing an area of approximately 1,890 square feet, as
shown and delineated on the attached map labeled Exhibit A.

ISSUANCE OF A REVOCABLE PERMIT FOR TWO TIE-DOWNS FOR AIRCRAFT PARKING
CIVIL AIR PATROL

Page 2

ZONING:

State Land Use District: Agriculture
City and County of Honolulu LUO: AG-2

LAND TITLE STATUS:

Ceded land, which the State of Hawaii is currently leasing the land from the United States of America.

CHARACTER OF USE:

Two tie-downs for aircraft parking (1984 Cessna 182, Tail No. N-8047E and 2019 Cessna 182, Tail No. N-503CP).

COMMENCEMENT DATE:

To be determined by the Director of Transportation at a later date.

MONTHLY RENTAL:

Not Applicable (N/A).

SECURITY DEPOSIT:

N/A.

DCCA VERIFICATION:

Place of business registration confirmed: N/A
Registered business name confirmed: N/A
Good standing confirmed: N/A

CHAPTER 343, HRS - ENVIRONMENTAL ASSESSMENT:

The subject land area is covered by the revised and updated Environmental Assessment for the Dillingham Airfield Master Plan and FAR Part 150 Noise Compatibility Program project, referenced as State Contract No. 26985, State Project No. AO2011-01. This Environmental Assessment evaluated the environmental effects of the recommended Dillingham Airfield Master Plan to meet existing and forecast general aviation demands and was prepared for the State of Hawaii, Department of Transportation (HDOT).

ISSUANCE OF A REVOCABLE PERMIT FOR TWO TIE-DOWNS FOR AIRCRAFT PARKING
CIVIL AIR PATROL

Page 3

REMARKS:

HDOT proposes to issue a month-to-month Parking Permit to CAP for two tie-downs for aircraft parking, situated at Kawaihapai Airfield at no charge based on Federal Aviation Administration (FAA) Circular 5190.6B-17.19 Exception for Military Aeronautical Units.

FAA Circular 5190.6B-17.19 Exception for Military Aeronautical Units states in part, "The FAA acknowledges that many airports provide facilities to military units with aeronautical missions at nominal lease rates. The FAA does not consider this practice inconsistent with the requirement for a self-sustaining airport rate structure... The search and rescue (SAR) and disaster relief roles played by Coast Guard, the U.S. Air Force Auxiliary, and the Civil Air Patrol are also recognized as a prime aeronautical role. These units generally provide services that directly benefit airport operators and safety."

RECOMMENDATION:

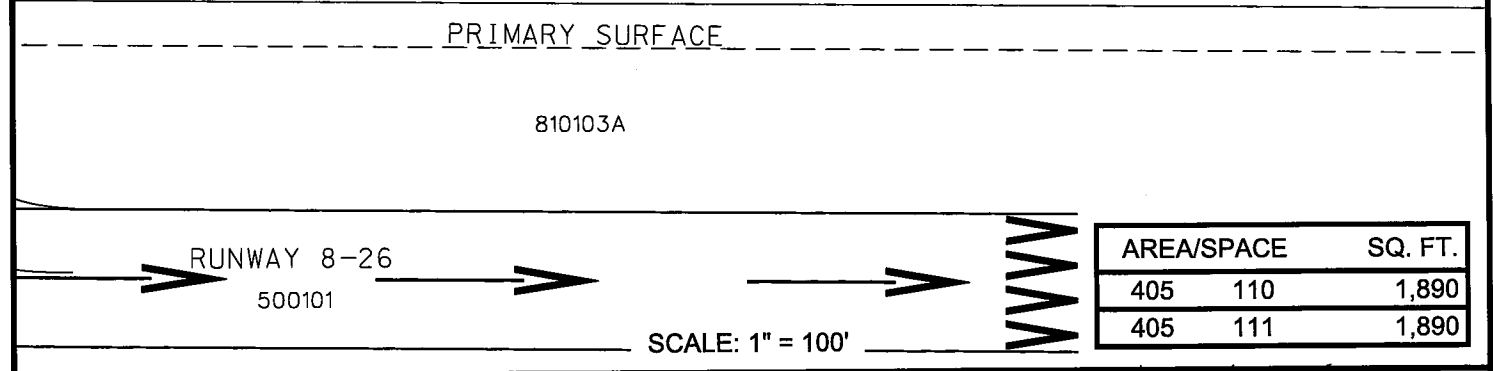
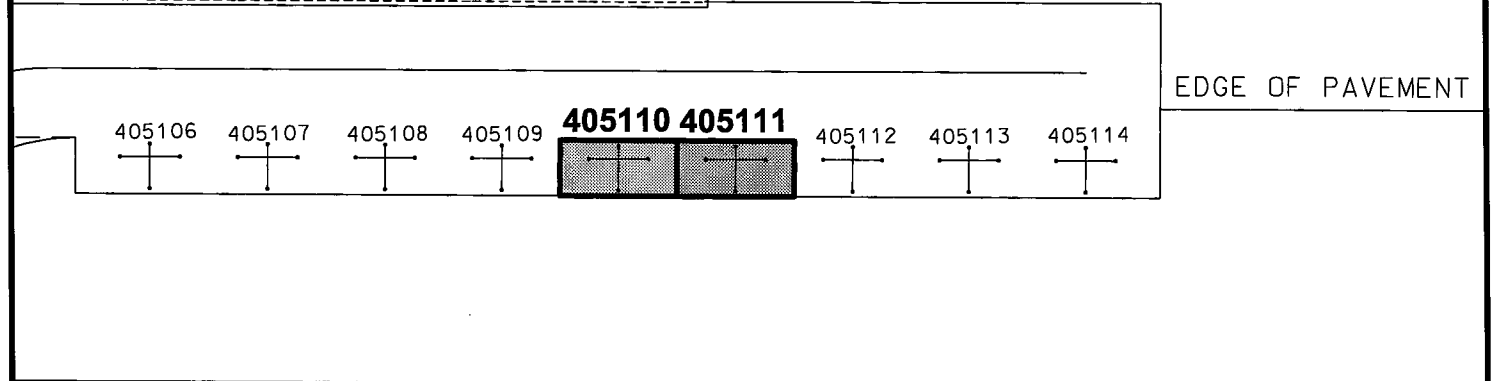
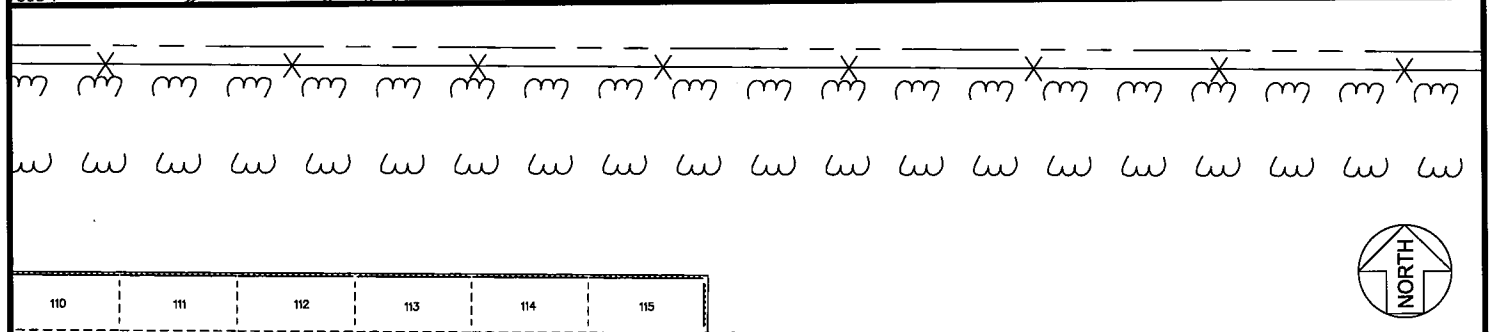
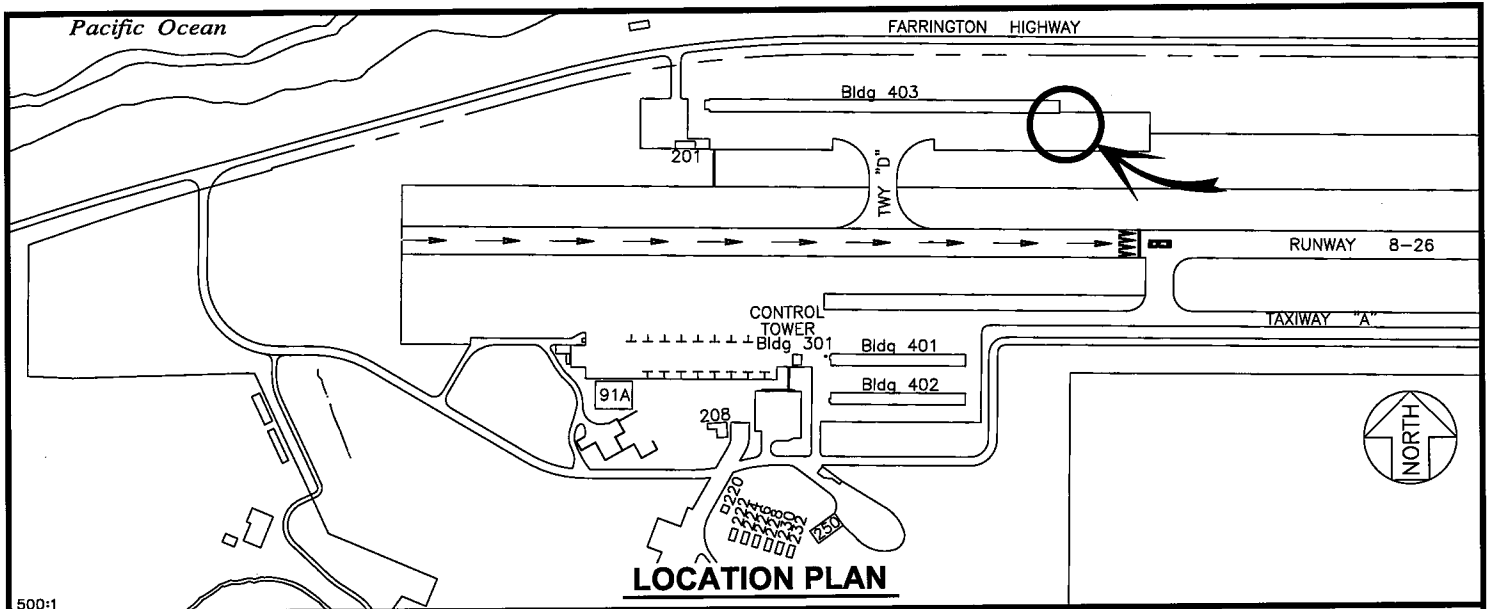
Based on this submittal, and testimony and facts presented, the HDOT recommends the Director of Transportation finds that approving the issuance of a month-to-month Parking Permit to CAP, including its conditions and rent, will serve the best interests of the State.

Respectfully submitted,



CURT T. OTAGURO
Deputy Director of Transportation for Airports

Attachment



AREA/SPACE	SQ. FT.
405 110	1,890
405 111	1,890

PP-24-0009	DATE : SEPTEMBER 2024	EXHIBIT: A
AIRPORTS	CIVIL AIR PATROL	TIE DOWNS
		405110 405111

DILLINGHAM AIRFIELD

N:\AIRPORTS\HDL_DILLINGHAM\CAD\PP\MHDLH_405110-01.DWG