

JOSH GREEN, M.D.  
GOVERNOR  
KE KIA'ĀINA



EDWIN H. SNIFFEN  
DIRECTOR  
KA LUNA HO'OKELE

Deputy Directors  
Nā Hope Luna Ho'okele  
DREANALEE K. KALILI  
TAMMY L. LEE  
CURT T. OTAGURO  
ROBIN K. SHISHIDO

**STATE OF HAWAII | KA MOKU'ĀINA 'O HAWAII'**  
**DEPARTMENT OF TRANSPORTATION | KA 'OIHANA ALAKAU**  
**AIRPORTS**  
400 RODGERS BOULEVARD, SUITE 700  
HONOLULU, HAWAII 96819-1880

IN REPLY REFER TO:

AIR-PM 24.0756

November 7, 2024

DOT Land Matters  
State of Hawaii  
Honolulu, Hawaii

ISSUANCE OF A REVOCABLE PERMIT FOR OFFICE SPACE, STORAGE FOR PARTS AND EQUIPMENT, AND A CONTROL ROOM FOR OPERATIONS AND MAINTENANCE OF THE INLINE BAGGAGE HANDLING SYSTEM  
OSHKOSH AEROTECH, LLC  
DANIEL K. INOUE INTERNATIONAL AIRPORT  
TAX MAP KEY: (1) 1-1-003: 001 (PORTION)

OAHU

APPLICANT:

Oshkosh Aerotech, LLC, whose business address is 758 Kapahulu Avenue, Suite 100-1133, Honolulu, Hawaii 96816.

LEGAL REFERENCE:

Hawaii Revised Statutes (HRS), Section 171-55, as amended.

LOCATION AND TAX MAP KEY:

Building No. 368, Ground Level of the Ewa Concourse Extension, and Building No. 360, Ground Level of the Ewa Concourse, located at the Daniel K. Inouye International Airport (Airport), Island of Oahu, State of Hawaii, identified by Tax Map Key: 1<sup>st</sup> Division, 1-1-003: 001 (Portion).

AREA:

Building/Room No. 368-115A, containing an area of approximately 2,190 square feet;  
Building/Room No. 368-115B, containing an area of approximately 783 square feet;  
Building/Room No. 368-115C, containing an area of approximately 629 square feet; and  
Building/Room No. 360-188C, containing an area of approximately 142 square feet, as shown and delineated on the attached map labeled Exhibit A.

ISSUANCE OF A REVOCABLE PERMIT FOR OFFICE SPACE, STORAGE FOR PARTS AND EQUIPMENT, AND A CONTROL ROOM FOR OPERATIONS AND MAINTENANCE OF THE INLINE BAGGAGE HANDLING SYSTEM  
OSHKOSH AEROTECH, LLC

Page 2

ZONING:

State Land Use District: Urban  
City and County of Honolulu LUO: Industrial (I-2)

LAND TITLE STATUS:

Section 5(a) lands of the Hawaii Admissions Act: Non-ceded  
DHHL 30% entitlement lands pursuant to Hawaii Admission Act YES \_\_\_ NO X

CURRENT USE STATUS:

Land presently encumbered by Governor's Executive Order No. 3201, dated June 8, 1983, setting aside 3,152.177 acres designated as the Airport under the control and management of the State of Hawaii Department of Transportation (HDOT), for Airport purposes.

CHARACTER OF USE:

Oshkosh Aerotech, LLC will use the spaces as a site office, storage of spare parts and equipment, and a control room for operations and maintenance of the Inline Baggage Handling System with an Explosive Detection System (EDS).

COMMENCEMENT DATE:

Upon execution of the revocable permit.

MONTHLY RENTAL:

\$4,583.93 (based on the rate of \$12.09 per square foot, per annum for storage space and \$18.60 per square foot, per annum for office space, as determined from the HDOT schedule of rates and charges established by appraisal of Airports property statewide plus \$360.75 for utilities, \$547.50 for electricity, and \$35.50 for air conditioning).

SECURITY DEPOSIT:

\$13,751.79, or three times the monthly rental in effect.

DCCA VERIFICATION:

Place of business registration confirmed: YES X NO \_\_\_  
Registered business name confirmed: YES X NO \_\_\_  
Good standing confirmed: YES X NO \_\_\_

ISSUANCE OF A REVOCABLE PERMIT FOR OFFICE SPACE, STORAGE FOR PARTS  
AND EQUIPMENT, AND A CONTROL ROOM FOR OPERATIONS AND MAINTENANCE  
OF THE INLINE BAGGAGE HANDLING SYSTEM  
OSHKOSH AEROTECH, LLC

Page 3

CHAPTER 343, HRS - ENVIRONMENTAL ASSESSMENT:

The environmental impacts of the proposed action to the subject land area are covered by the Honolulu International Airport Master Plan Update and Noise Compatibility Program Environmental Assessment (EA), State Project No. AO1011-03. The EA is a joint State and Federal document, dated September 1989 and published in the October 23, 1989 issue of the OEQC Bulletin. Accordingly, relevant mitigation from the EA and HDOT environmental best management practice will address minimal impacts from this action.

REMARKS:

HDOT proposes to issue a month-to-month revocable permit to Oshkosh Aerotech, LLC for office space, storage for parts and equipment, and a control room for operations and maintenance of the Inline EDS Baggage Handling System at the Airport.

RECOMMENDATION:

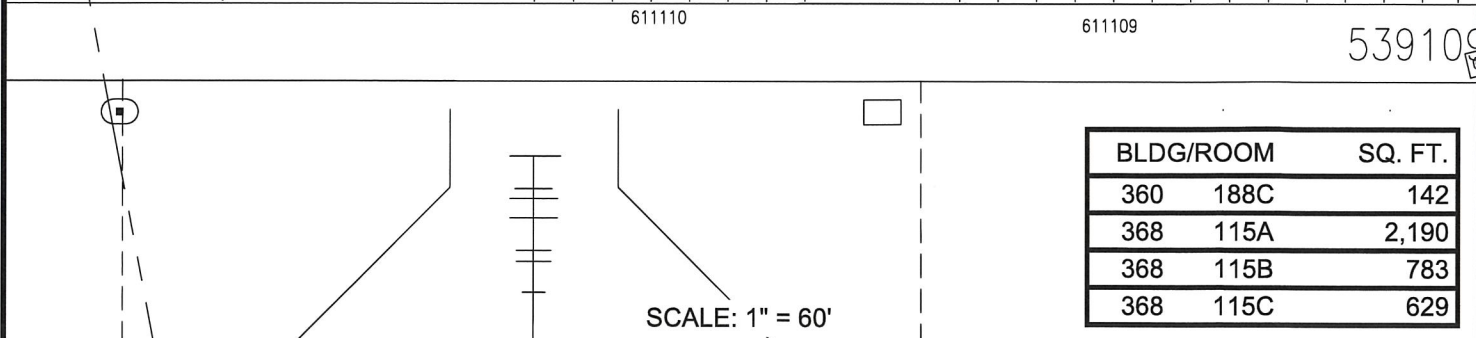
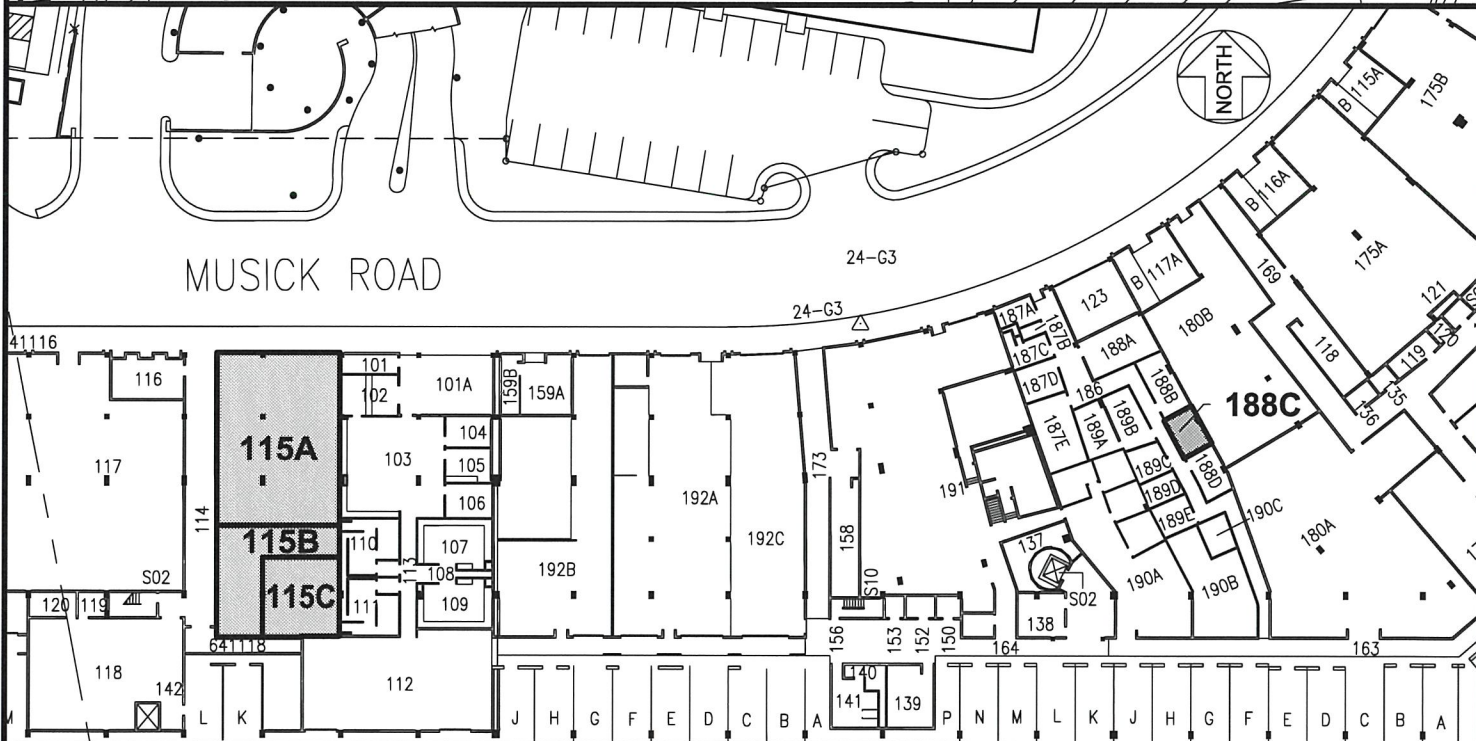
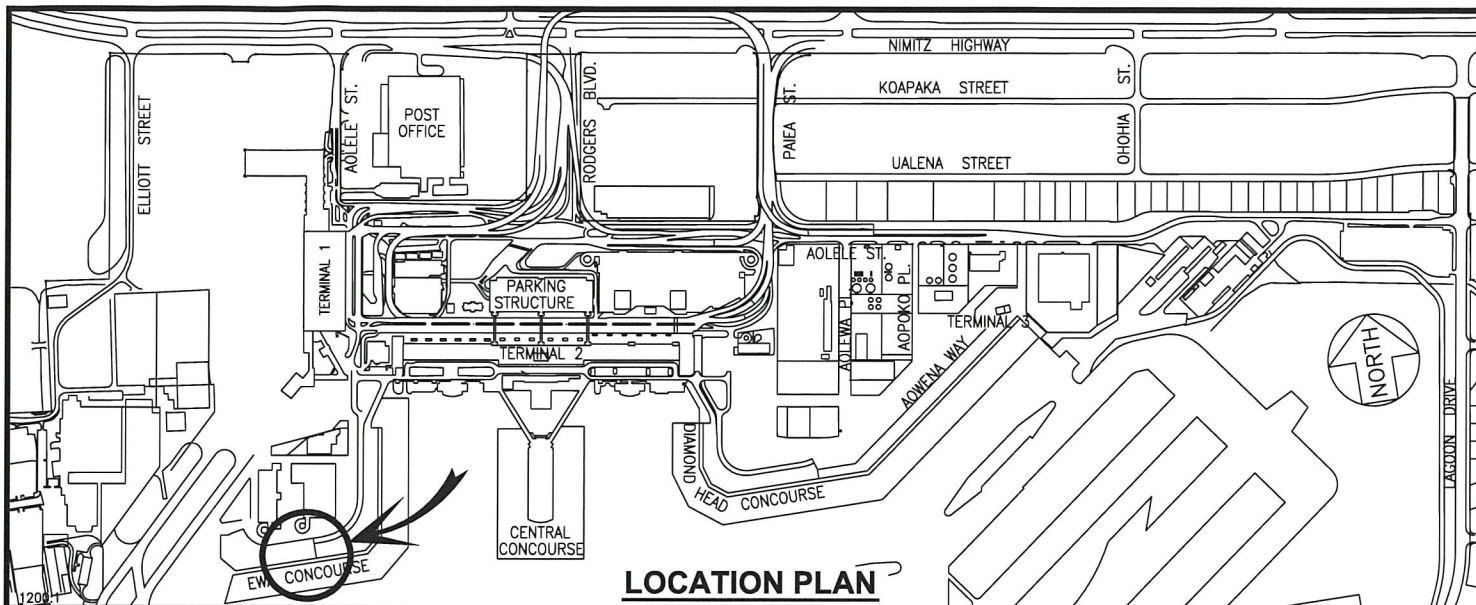
Based on this submittal, and testimony and facts presented, the HDOT recommends the Director of Transportation finds that approving the issuance of a month-to-month revocable permit to Oshkosh Aerotech, LLC, including its conditions and rent, will serve the best interests of the State.

Respectfully submitted,




CURT T. OTAGURO  
Deputy Director of Transportation for Airports

Attachment



BLDG/ROOM	SQ. FT.
360 188C	142
368 115A	2,190
368 115B	783
368 115C	629

RP-9620	DATE : OCTOBER 2024	EXHIBIT: <b>A</b>
 <b>AIRPORTS</b>	<b>OSHKOSH AEROTECH, LLC</b>	<b>BUILDING 360 &amp; 368</b>
		<b>EWA CONCOURSE</b>
		<b>GROUND LEVEL</b>
		<b>360188C</b> <b>368115A</b> <b>368115B</b> <b>368115C</b>

**DANIEL K. INOUE INTERNATIONAL AIRPORT**

N:\AIRPORTS\HNL\_HONOLULU\CADD\PM\HNL\_360188C-01.DWG