

JOSH GREEN, M.D.
GOVERNOR
KE KIA'ĀINA



EDWIN H. SNIFFEN
DIRECTOR
KA LUNA HO'OKELE

Deputy Directors
Nā Hope Luna Ho'okele
DREANALEE K. KALILI
TAMMY L. LEE
CURT T. OTAGURO
ROBIN K. SHISHIDO

IN REPLY REFER TO:

STATE OF HAWAII | KA MOKU'ĀINA 'O HAWAII'
DEPARTMENT OF TRANSPORTATION | KA 'OIHANA ALAKAU
AIRPORTS
400 RODGERS BOULEVARD, SUITE 700
HONOLULU, HAWAII 96819-1880

AIR-PM 24.0900

December 26, 2024

DOT Land Matters
State of Hawaii
Honolulu, Hawaii

ISSUANCE OF A REVOCABLE PERMIT FOR OFFICE AND STORAGE
SPACE TO SUPPORT THE ADVERTISING CONCESSION
PACIFIC RADIO GROUP, INC.
KAHULUI AIRPORT
TAX MAP KEY: (2) 3-8-001:173 (PORTION)

MAUI

APPLICANT:

Pacific Radio Group, Inc., whose business address is 311 Ano Street,
Kahului, Hawaii 96732.

LEGAL REFERENCE:

Hawaii Revised Statutes (HRS), Sections 26-19 and 171, as amended.

LOCATION AND TAX MAP KEY:

Portion of Kahului Airport, Kahului, Island of Maui, identified by
Tax Map Key: 2nd Division, 3-8-001:173 (Portion).

AREAS:

Area/Space No. 340-132, containing an area of approximately 58 square feet, and
Area/Space No. 340-133, containing an area of approximately 216 square feet, as
shown and delineated on the attached map labeled Exhibit A.

ZONING:

State Land Use District: Urban
County of Hawaii: Industrial (ML-20)

ISSUANCE OF A REVOCABLE PERMIT FOR OFFICE AND STORAGE SPACE TO
SUPPORT THE ADVERTISING CONCESSION, PACIFIC RADIO GROUP, INC.

Page 2

LAND TITLE STATUS:

Section 5(a) lands of the Hawaii Admission Act: Non-Ceded
DHHL 30% entitlement lands pursuant to Hawaii Admission Act YES ___ NO X

CURRENT USE STATUS:

Land presently encumbered by Governor's Executive Order No. 2427, dated February 12, 1969, setting aside 1,268.938 acres designated as Kahului Airport to be under the control and management of the State of Hawaii Department of Transportation (HDOT) for Airport purposes.

CHARACTER OF USE:

Pacific Radio Group, Inc., will use the space for an office and a storage to support its advertising concession operations.

COMMENCEMENT DATE:

Upon execution of the document.

MONTHLY RENTAL:

\$665.00 (\$558.14, as determined from the HDOT Schedule of Rates and Charges established by appraisal of Airport property statewide plus \$106.86 for utilities).

SECURITY DEPOSIT:

\$1,995.00, or three times the monthly rental in effect.

CHAPTER 343, HRS - ENVIRONMENTAL ASSESSMENT:

The HDOT has determined that the subject area and use is covered by the Kahului Airport Terminal Complex Expansion Negative Declaration, published by the Environmental Quality Commission in the September 8, 1981, issue of the EQC Bulletin. Accordingly, all relevant mitigation from the Negative Declaration and best management practices will be implemented to address the minimum impacts of this action.

REMARKS:

The HDOT proposes to issue a month-to-month revocable permit to Pacific Radio Group, Inc., to support the advertising concession operations.

ISSUANCE OF A REVOCABLE PERMIT FOR OFFICE AND STORAGE SPACE TO
SUPPORT THE ADVERTISING CONCESSION, PACIFIC RADIO GROUP, INC.

Page 3

RECOMMENDATION:

Based on this submittal, and the testimony and facts presented, the HDOT recommends the Director of Transportation finds that approving the issuance of a month-to-month revocable permit to Pacific Radio Group, Inc., including its conditions and rent, will serve the best interests of the State.

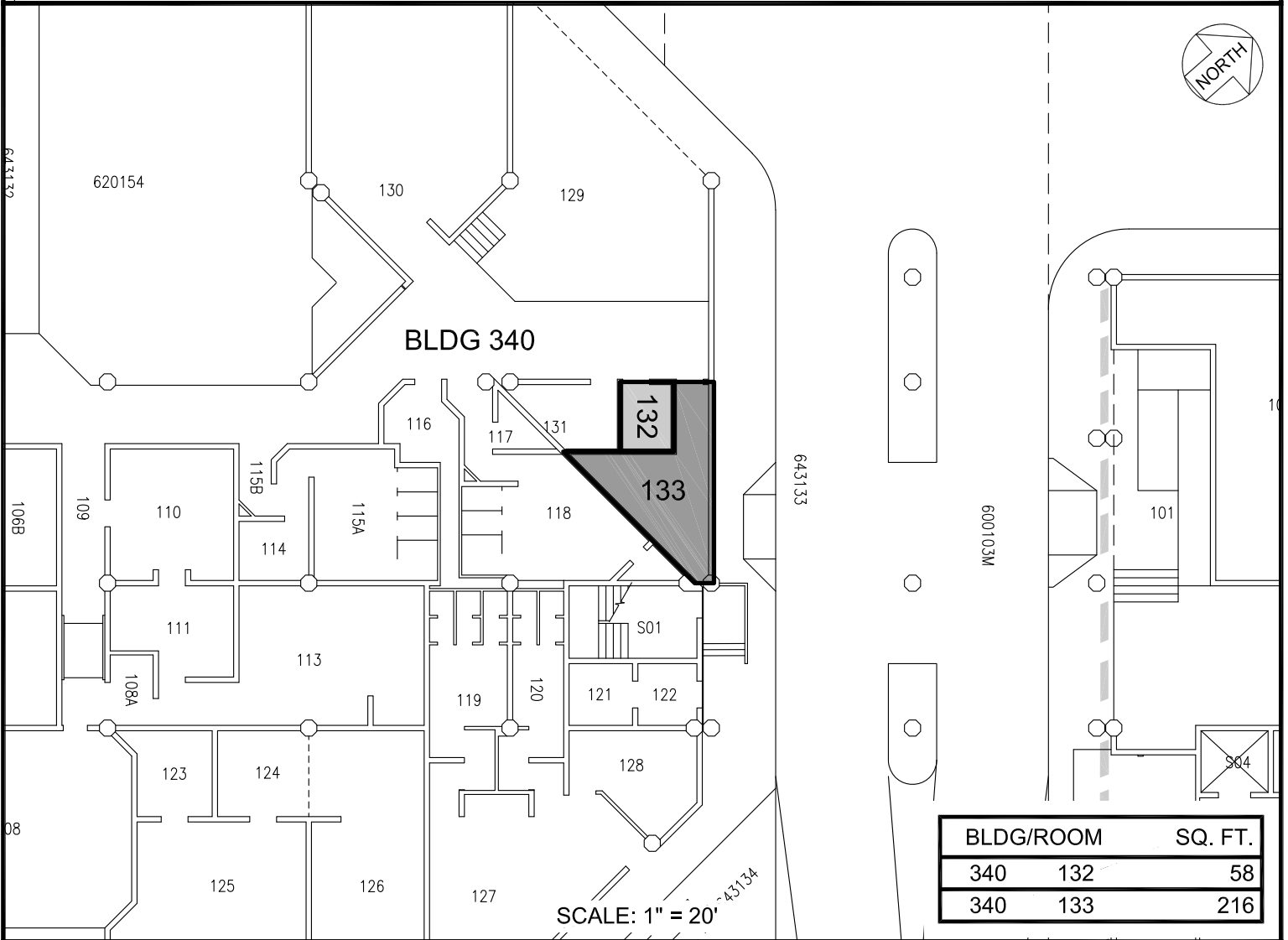
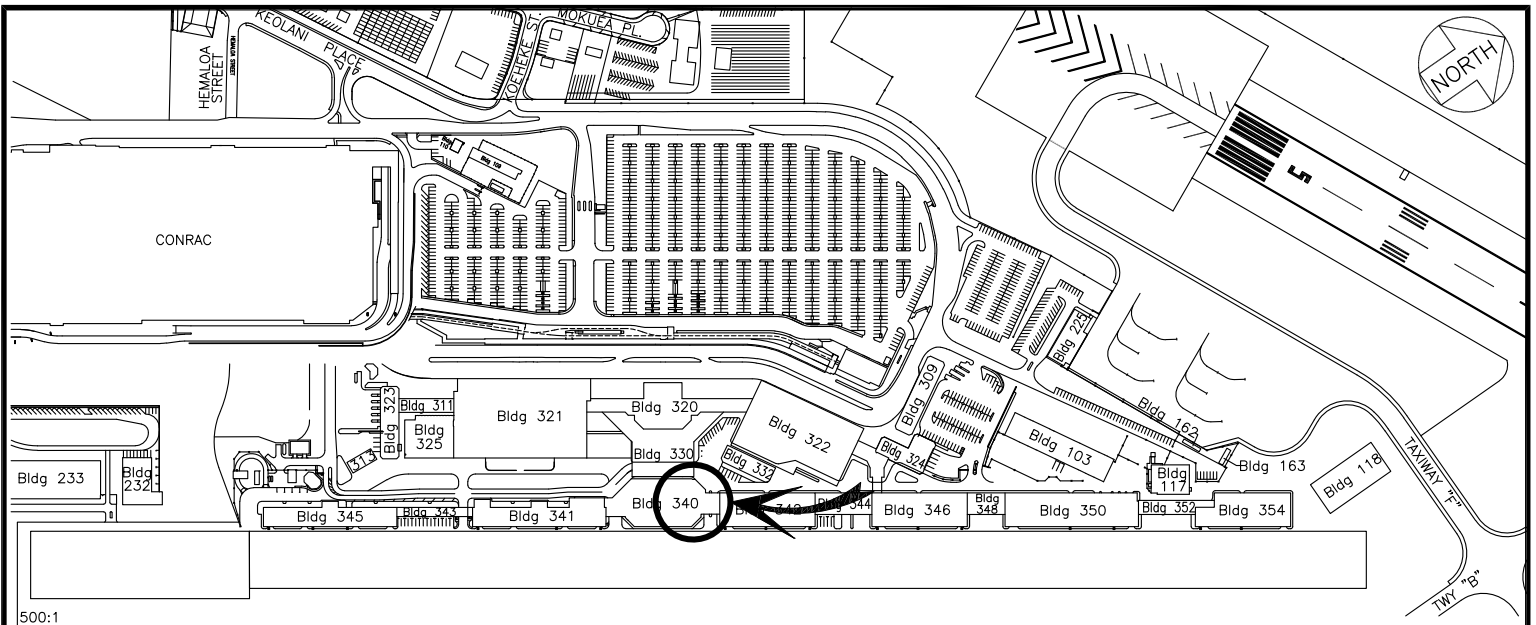
Respectfully submitted,



CURT T. OTAGURO


Deputy Director of Transportation for Airports

Attachment



BLDG/ROOM	SQ. FT.
340 132	58
340 133	216

SCALE: 1" = 20'

RP-9632	DATE : NOVEMBER 2024	EXHIBIT: A	
 AIRPORTS	PACIFIC RADIO GROUP, INC.	BUILDING 340 CENTRAL BLDG GROUND LEVEL	340132 340133

KAHULUI AIRPORT

N:\AIRPORTS\IOGG_KAHULUI\CAD\PMO\G_340132-01.DWG