

JOSH GREEN, M.D.
GOVERNOR
KE KIA'ĀINA



STATE OF HAWAII | KA MOKU'ĀINA 'O HAWAII'
DEPARTMENT OF TRANSPORTATION | KA 'OIHANA ALAKAU
869 PUNCHBOWL STREET
HONOLULU, HAWAII 96813-5097

EDWIN H. SNIFFEN
DIRECTOR
KA LUNA HO'OKELE

Deputy Directors
Nā Hope Luna Ho'okele
DREANALEE K. KALILI
TAMMY L. LEE
CURT T. OTAGURO
ROBIN K. SHISHIDO

IN REPLY REFER TO:

December 26, 2024

Mr. Edwin H. Sniffen, Director
Department of Transportation
869 Punchbowl Street
Honolulu, Hawaii 96813

HAWAII

Request for Authorization to issue one month-to-month revocable permit (RP) to the County of Hawaii, for the installation and storage of communications equipment and ancillary air conditioning equipment, Pier 2, Kawaihae Harbor, island of Hawaii, Tax Map Key No. (3) 6-1-003:034 (Portion), Governors Executive Order No. 1988.

LEGAL REFERENCE:

Hawaii Revised Statutes, Sections 171-6, 171-11, 171-13, 171-17, 171-55, and 171-59, as amended.

APPLICANT:

County of Hawaii (Applicant) whose business and mailing address is 25 Aupuni Street, Suite 1101, Hilo, Hawaii 96720.

CHARACTER OF USE:

To allow Applicant and its permitted agents to install and maintain communications equipment and ancillary air conditioning equipment.

LOCATION:

Portion of Government lands situated on Kawaihae Harbor, island of Hawaii, Tax Map Key No. (3) 6-1-003:034 (Portion), as shown on the enclosed Exhibit A.

ZONING:

State Land Use Commission:
County of Hawaii:

Urban
MG-1a - General Industrial District

AREA: See enclosed Exhibit A

AREA	DESCRIPTION	TYPE	SQ. FT.	MONTHLY RENTAL	SECURITY DEPOSIT
1	Server Room Equipment	Office Space	9	\$12.33	\$24.66
2	Air Handler, Refrigerant Lines	Office Space	10	\$13.70	\$27.40
3	Condenser, Refrigerant Lines	Office Space	15	\$20.55	\$41.10
Total:				<u>\$46.58</u>	<u>\$93.16</u>

CONSIDERATION:

Month-to-month rent determined by appraisal as of January 1, 2021, for RPs in Kawaihae Harbor, island of Hawaii.

LAND TITLE STATUS:

Owned by the State of Hawaii, management and control of the property was transferred to the Hawaii Department of Transportation (HDOT) by Executive Order No. 1988.

TRUST LAND STATUS:

Subsection 5 (b).

CHAPTER 343 - ENVIRONMENTAL ASSESSMENT:

This use is exempt from the Office of Planning and Sustainable Development, and Environmental Review Program requirements pursuant to Hawaii Administrative Rules (HAR), Subchapter 11-200.1, which exempts the following:

“Exemption Type 1: Operations, repairs, or maintenance of existing structures, facilities, equipment or topographical features, involving minor expansion or minor change of use beyond that previously existing.”

The HDOT deems the action as de minimis and exempts it from the preparation of an exemption notice in accordance with HAR, Subchapter 11-200.1-16 (b). The exemption declaration for the action described above, based on the Exemption List for the HDOT, reviewed and concurred to by the Environmental Advisory Council on February 1, 2022, is as follows:

Mr. Edwin H. Sniffen, Director
December 26, 2024
Page 3

Exemption Type 1, Part 1:

- No. B2. "Temporary storage and staging of equipment and materials on State lands as necessary to support exempted and planned repair or maintenance activities."

Exemption Type 8, Part 1:

- No. 8g. "Creation or extension of leases, revocable permits or easements involving negligible or minor expansion or change of use beyond that previously existing."

REMARKS:

The use of the premises by the Applicant is for the installation and use of communications equipment and a ductless air conditioning system to cool a server room. The equipment will be maintained by the Hawaii County Department of Information Technology.

RECOMMENDATION:

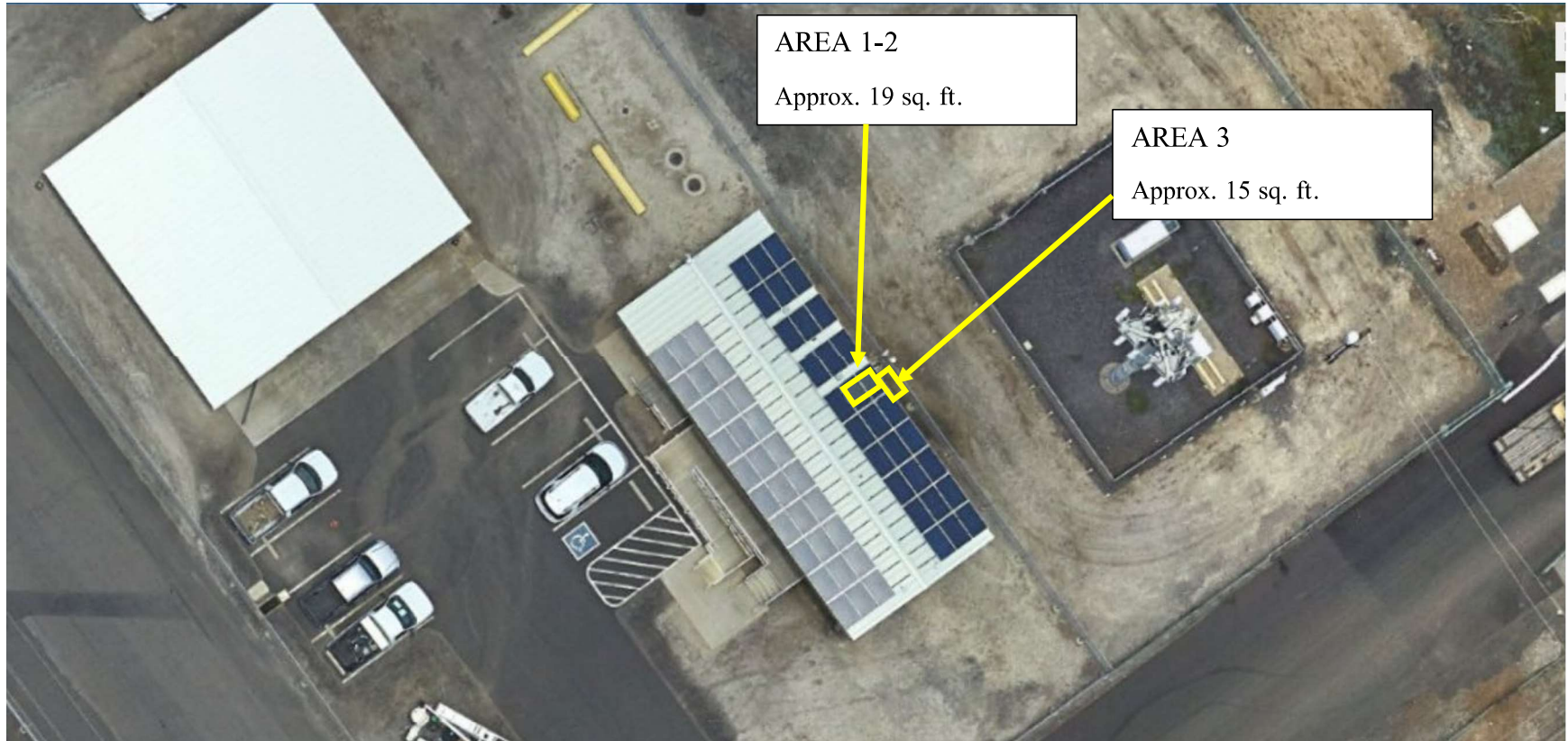
Based on this submittal, testimony and facts presented, the HDOT recommends the issuance of one month-to-month RP to the Applicant including its conditions and rent, under the terms and conditions cited above and other terms and conditions as may be prescribed by the Director of Transportation to best serve the interest of the State.

Sincerely,



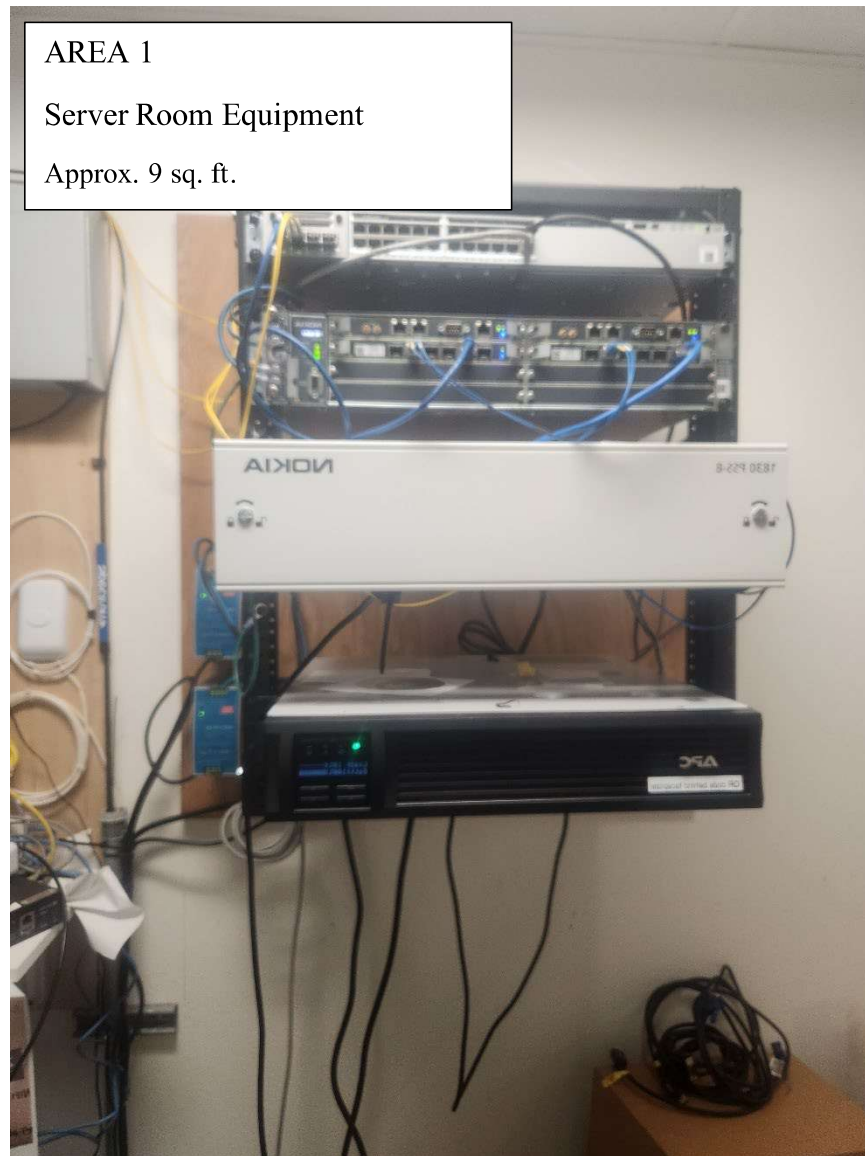
DREANALEE K. KALILI
Deputy Director of Transportation for Harbors

Enclosures



Hawaii County
Pier 2 Back Lot, Kawaihae Harbor

EXHIBIT A



**Hawaii County
Pier 2 Back Lot, Kawaihae Harbor**

EXHIBIT A



Hawaii County
Pier 2 Back Lot, Kawaihae Harbor

EXHIBIT A

