

JOSH GREEN, M.D.
GOVERNOR
KE KIA'ĀINA



EDWIN H. SNIFFEN
DIRECTOR
KA LUNA HO'OKELE

Deputy Directors
Nā Hope Luna Ho'okele
DREANALEE K. KALILI
TAMMY L. LEE
CURT T. OTAGURO
ROBIN K. SHISHIDO

**STATE OF HAWAII | KA MOKU'ĀINA 'O HAWAII'
DEPARTMENT OF TRANSPORTATION | KA 'OIHANA ALAKAU
AIRPORTS**

400 RODGERS BOULEVARD, SUITE 700
HONOLULU, HAWAII 96813-5097

IN REPLY REFER TO:

AIR-PM 25.0016

January 23, 2025

DOT Land Matters
State of Hawaii
Honolulu, Hawaii

ISSUANCE OF A REVOCABLE PERMIT FOR IMPROVED, PAVED LAND
FOR CONSTRUCTION LAYDOWN SPACE FOR THE STORAGE OF
CONSTRUCTION EQUIPMENT, VEHICLES AND CONTRACTOR OFFICE SPACE
HAWAII FUELING FACILITIES CORPORATION
DANIEL K. INOUE INTERNATIONAL AIRPORT
TAX MAP KEY: (1) 1-1-003: 017 (PORTION) OAHU

APPLICANT:

Hawaii Fueling Facilities Corporation (HFFC), whose mailing address is
3201 Aolele Street, Honolulu, Hawaii 96819.

LEGAL REFERENCE:

Hawaii Revised Statutes (HRS), Section 26-19 and 171-2, as amended.

LOCATION AND TAX MAP KEY:

A portion of 3255 Aolele Street, of Daniel K. Inouye International Airport (Airport),
Island of Oahu, State of Hawaii, identified by Tax Map Key: 1st Division, 1-1-003: 017
(Portion).

AREA:

Area/Space No. 001-101G, containing an area of approximately 33,094 square feet, and as
shown and delineated on the attached map labeled Exhibit A.

ZONING:

State Land Use District: Urban
City and County of Honolulu LUO: Industrial (I-2)

ISSUANCE OF A REVOCABLE PERMIT FOR IMPROVED, PAVED LAND FOR
CONSTRUCTION LAYDOWN SPACE FOR THE STORAGE OF CONSTRUCTION
EQUIPMENT, VEHICLES, AND CONTRACTOR OFFICE SPACE
HAWAII FUELING FACILITIES CORPORATION

Page 2

LAND TITLE STATUS:

Non-ceded - Section 5(a) lands of the Hawaii Admission Act
DHHL 30% entitlement lands pursuant to Hawaii Admission Act YES ___ NO X

CURRENT USE STATUS:

Land presently encumbered by Governor's Executive Order No. 3201, dated June 8, 1983, setting aside 3,152.177 acres designated as Daniel K. Inouye International Airport under the control and management of the State of Hawaii Department of Transportation (HDOT) for Airport purposes.

CHARACTER OF USE:

HFFC will use the improved, paved land for construction laydown space for the storage of construction equipment, vehicles, conex containers and contractor office space to support the improvement of the Fuel Storage Facility at the Airport.

COMMENCEMENT DATE:

Upon execution of the revocable permit.

MONTHLY RENTAL:

\$26,254.57 per month, as determined from the HDOT Schedule of Rates and Charges established by appraisal of Airports properties statewide.

SECURITY DEPOSIT:

\$78,763.71, or three times the monthly rental in effect.

DCCA VERIFICATION:

| | | |
|---|--------------|--------|
| Place of business registration confirmed: | YES <u>X</u> | NO ___ |
| Registered business name confirmed: | YES <u>X</u> | NO ___ |
| Good standing confirmed: | YES <u>X</u> | NO ___ |

ISSUANCE OF A REVOCABLE PERMIT FOR IMPROVED, PAVED LAND FOR
CONSTRUCTION LAYDOWN SPACE FOR THE STORAGE OF CONSTRUCTION
EQUIPMENT, VEHICLES, AND CONTRACTOR OFFICE SPACE
HAWAII FUELING FACILITIES CORPORATION

Page 3

CHAPTER 343, HRS - ENVIRONMENTAL ASSESSMENT:

The environmental impacts of the proposed action to the subject land area are covered by the Honolulu International Airport, Airport Modernization Program Environmental Assessment (EA), State Project No. AO1030-13. The EA is a joint State and Federal document dated January 2013, and published in the February 8, 2013 issue of the OEQC Bulletin. Accordingly, the actions have been determined to have little or no impact upon the environment.

REMARKS:

HDOT proposes to issue a revocable permit to HFFC for improved, paved land for construction laydown space for the storage of construction equipment, vehicles, conex containers, and contractor office space, situated at the Airport.

RECOMMENDATION:

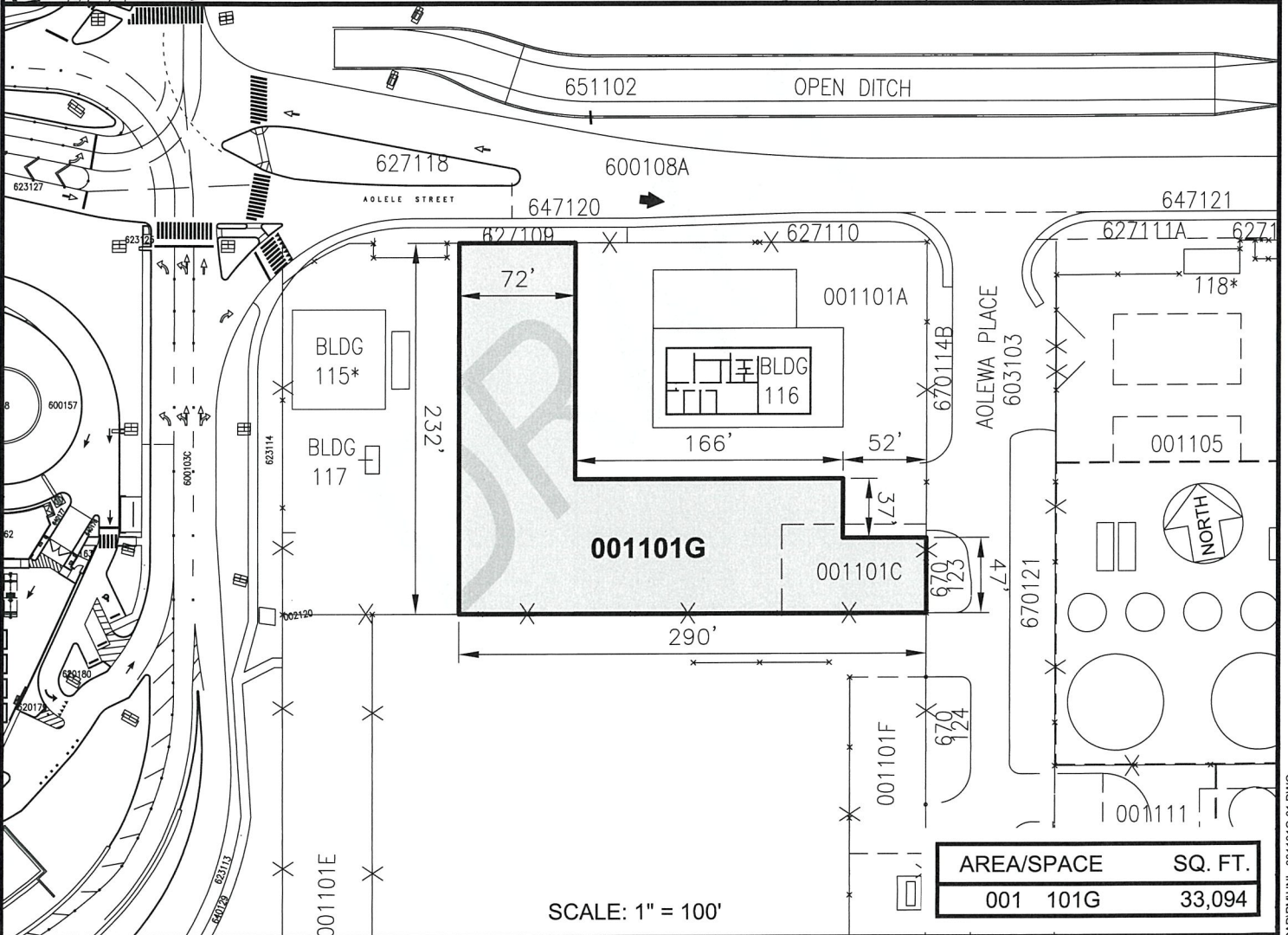
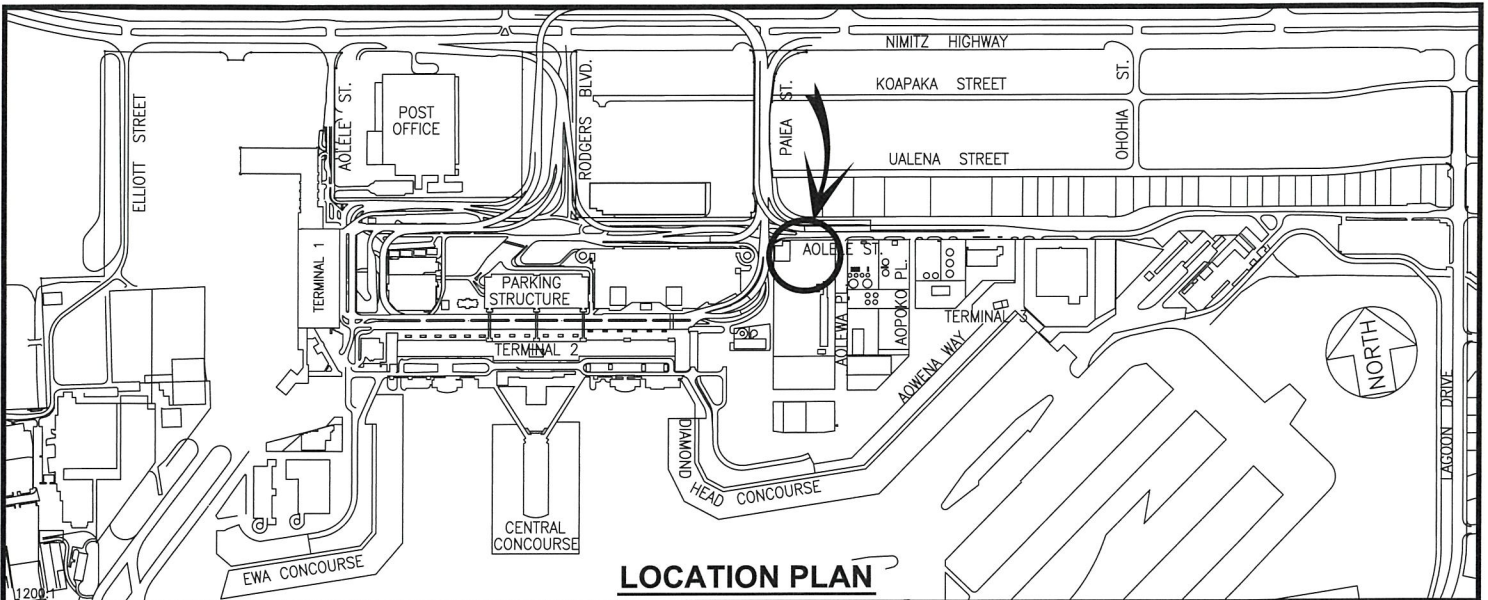
Based on this submittal, and testimony and facts presented, the HDOT recommends the Director of Transportation finds that approving the issuance of a month-to-month revocable permit to HFFC, including its conditions and rent, will serve the best interests of the State.

Respectfully submitted,



CURT T. OTAGURO
Deputy Director of Transportation for Airports

Attachment



DATE : DECEMBER 2024

EXHIBIT: **A**



AIRPORTS

HAWAII FUELING
FACILITIES CORPORATION

LOT, OVERSEAS
MAINTENANCE AREA

001101G

DANIEL K. INOUE INTERNATIONAL AIRPORT

N:\AIRPORTS\HNL_HONOLULUCAD\IP\MHNL_001101G-01.DWG