

JOSH GREEN, M.D.
GOVERNOR
KE KIA'ĀINA



STATE OF HAWAII | KA MOKU'ĀINA 'O HAWAII'
DEPARTMENT OF TRANSPORTATION | KA 'OIHANA ALAKAU
AIRPORTS
400 RODGERS BOULEVARD, SUITE 700
HONOLULU, HAWAII 96819-1880

EDWIN H. SNIFFEN
DIRECTOR
KA LUNA HO'OKELE

Deputy Directors
Nā Hope Luna Ho'okele
DREANALEE K. KALILI
TAMMY L. LEE
CURT T. OTAGURO
ROBIN K. SHISHIDO

IN REPLY REFER TO:

AIR-PM 25.0037

February 13, 2025

DOT Land Matters
State of Hawaii
Honolulu, Hawaii

ISSUANCE OF A REVOCABLE PERMIT FOR LAND FOR A FIELD OFFICE
AND STAGING OF MATERIALS AND EQUIPMENT
JAS. W. GLOVER, LTD.
ELLISON ONIZUKA KONA INTERNATIONAL AIRPORT AT KEAHOLE
TAX MAP KEY: (3) 7-3-043: PORTION OF 003 **HAWAII**

APPLICANT:

JAS. W. GLOVER, LTD. (Glover), whose mailing address is 890 Leilani Street,
Hilo, Hawaii 96720.

LEGAL REFERENCE:

Hawaii Revised Statutes (HRS), Sections 26-19 and 171, as amended.

LOCATION AND TAX MAP KEY:

Portion of Ellison Onizuka Kona International Airport at Keahole (KOA), Kailua-Kona,
Island of Hawaii, identified by Tax Map Key: 3rd Division, 7-3-043: Portion of 003.

AREA:

Improved, Unpaved Land

Area/Space No. 811-102, containing an area of approximately 197,637 square feet, as
shown and delineated on the attached Exhibit A,
Area/Space No. 517-105B, containing an area of approximately 205,255 square feet, as
shown and delineated on the attached Exhibit B,
Area/Space No. 001-118, containing an area of approximately 33,750 square feet, and
Area/Space No. 001-119, containing an area of approximately 5,000 square feet, as
shown and delineated on the attached Exhibit C.

ISSUANCE OF A REVOCABLE PERMIT FOR LAND FOR A FIELD OFFICE AND STAGING OF MATERIALS AND EQUIPMENT, JAS. W. GLOVER, LTD.

Page 2

ZONING:

State Land Use District: Urban & Conservation
County of Hawaii: Industrial (MG-1a) and Open

LAND TITLE STATUS:

Section 5(a) lands of the Hawaii Admission Act: Ceded
DHHL 30% entitlement lands pursuant to Hawaii Admission Act YES ___ NO X

CURRENT USE STATUS:

Land presently encumbered by Governors Executive Order No. 3074, dated August 20, 1981, setting aside 4,204.10 acres designated as KOA under the control and management of the State of Hawaii Department of Transportation (HDOT) for Airport purposes.

CHARACTER OF USE:

Glover will use the land spaces, Area/Space Nos. 811-102, 517-105B, and 001-118 for the staging of materials and equipment as specifically stated in State Project No. AH2021-16, Runway 17-35 Rehabilitation at Ellison Onizuka Kona International Airport at Keahole.

Glover will use the land Area/Space No. 001-119 for a field office as specifically stated in State Project No. AH2021-16, Runway 17-35 Rehabilitation at Ellison Onizuka Kona International Airport at Keahole.

COMMENCEMENT DATE:

To be determined by the Director of Transportation at a later date.

MONTHLY RENTAL:

\$25.00 (per State Project No. AH2021-16, Section 01005-Description of Work, Part 1-General, 1.5 Provisions for Field Office/Storage and Space).

SECURITY DEPOSIT:

\$75.00, or three times the monthly rental in effect.

ISSUANCE OF A REVOCABLE PERMIT FOR LAND FOR A FIELD OFFICE AND STAGING OF MATERIALS AND EQUIPMENT, JAS. W. GLOVER, LTD.

Page 3

DCCA VERIFICATION:

Place of business registration confirmed: YES X NO ___
Registered business name confirmed: YES X NO ___
Good standing confirmed: YES X NO ___

CHAPTER 343, HRS - ENVIRONMENTAL ASSESSMENT:

The HDOT has determined that the subject land areas for Exhibits A and C pertaining to this action was evaluated for environmental impact by the Keahole Airport Master Plan Final Environmental Impact Statement (EIS), published in The Environmental Notice on November 8, 1988, and accepted by the Governor on December 19, 1988. This action is consistent with the 1988 EIS and the same mitigation conditions apply.

The HDOT has determined the subject land areas for Exhibit B are covered by the Final Environmental Assessment (EA)/Finding of No Significant Impact, Airfield, Terminal, and Facility Improvements for the KOA, published by the Office of Environmental Quality Control in the March 23, 2013, issue of The Environmental Notice. Accordingly, all relevant mitigation from the EA and best management practices will be implemented to address the minimum impacts of this action.

REMARKS:

The HDOT proposes to issue a month-to-month revocable permit to Glover for space for a field office and staging of materials and equipment in support of State Project No. AH2021-16.

RECOMMENDATION:

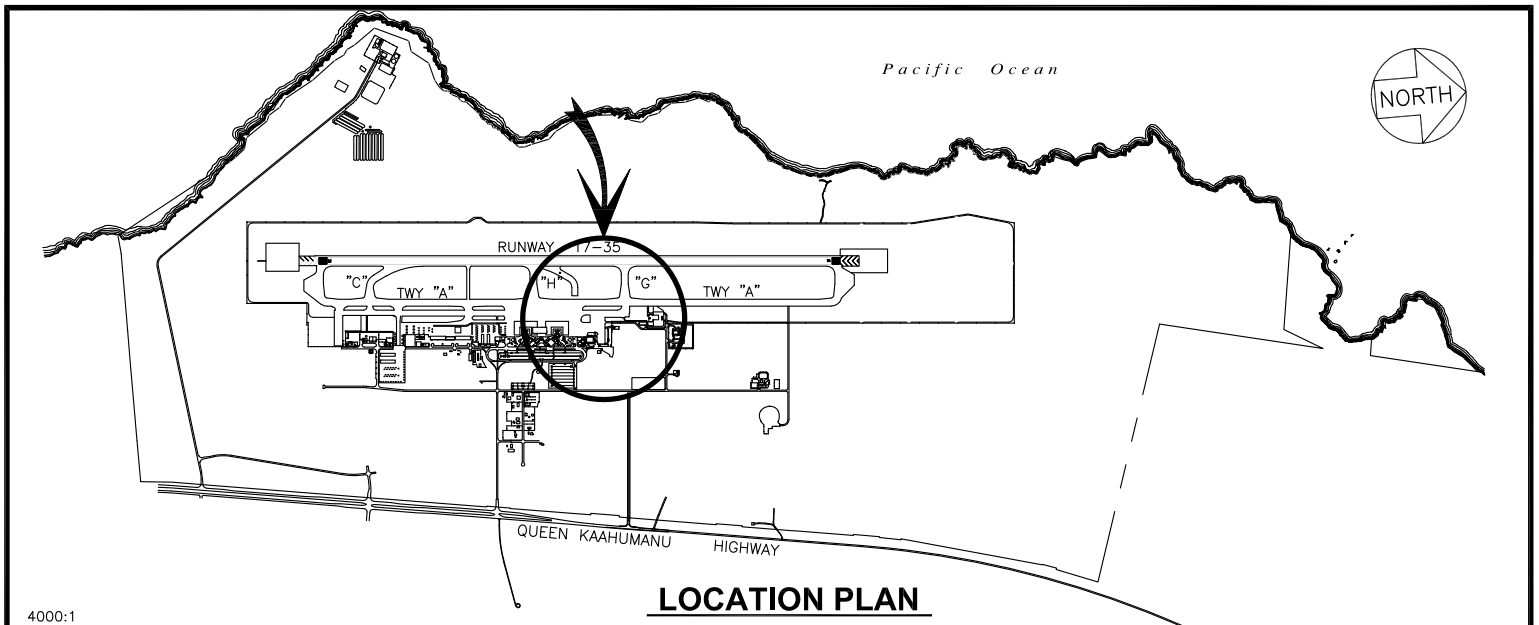
Based on this submittal, and testimony and facts presented, the HDOT recommends the Director of Transportation finds that approving the issuance of a month-to-month revocable permit to Glover, including its conditions and rent, will serve the best interests of the State.

Respectfully submitted,

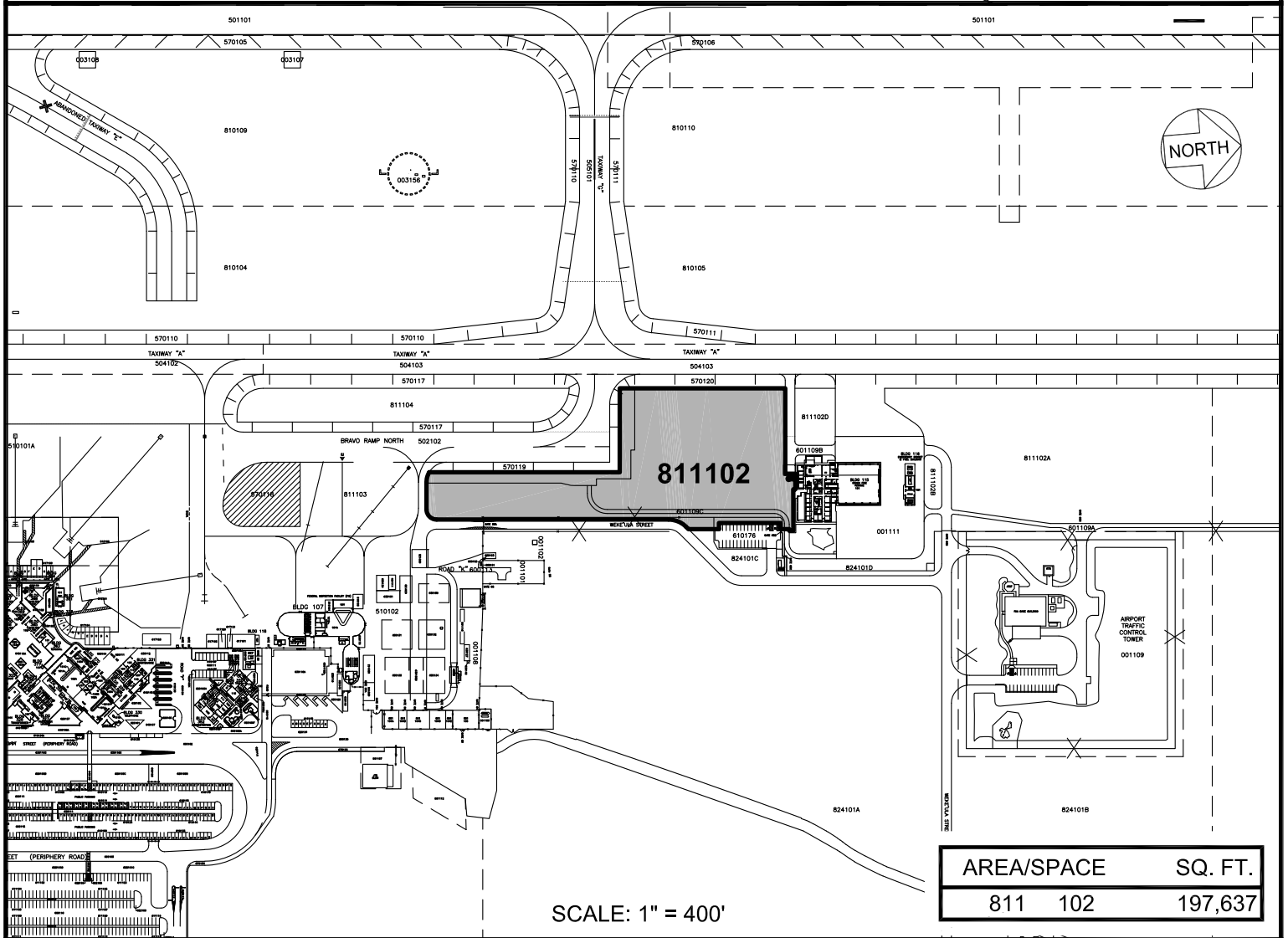


CURT T. OTAGURO
Deputy Director of Transportation for Airports

Attachments



4000:1



RP-9467

DATE : SEPTEMBER 2024

EXHIBIT: **A**

DEPARTMENT OF TRANSPORTATION
STATE OF HAWAII

AIRPORTS

JAS. W. GLOVER, LTD.

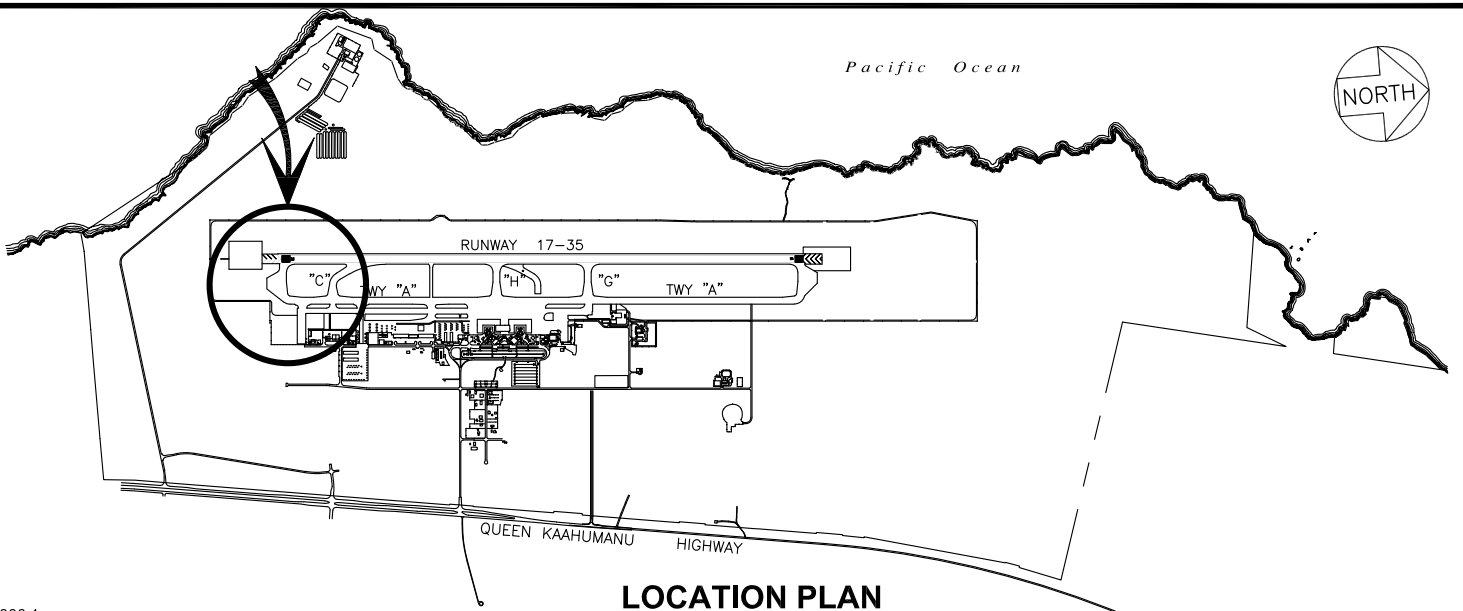
NORTH RAMP

811102

ELLISON ONIZUKA KONA INTERNATIONAL AIRPORT AT KEAHOLE

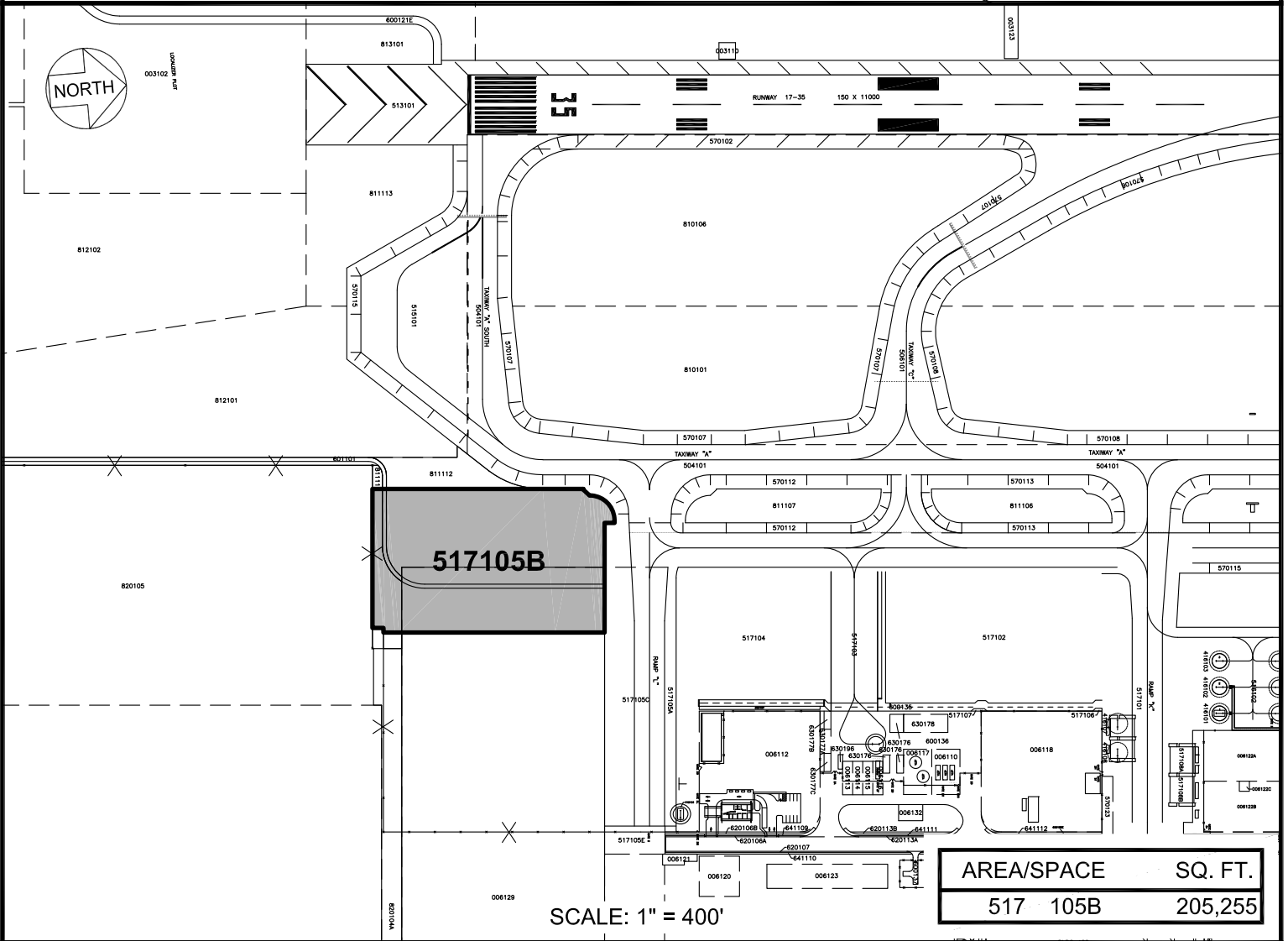
N:\AIRPORTS\KOA_KONACAD\PIK\KOA_811102-01_DRAFT.DWG

Pacific Ocean



LOCATION PLAN

4000:1



SCALE: 1" = 400'

AREA/SPACE	SQ. FT.
517 105B	205,255

RP-9467

DATE : SEPTEMBER 2024

EXHIBIT: **B**



AIRPORTS

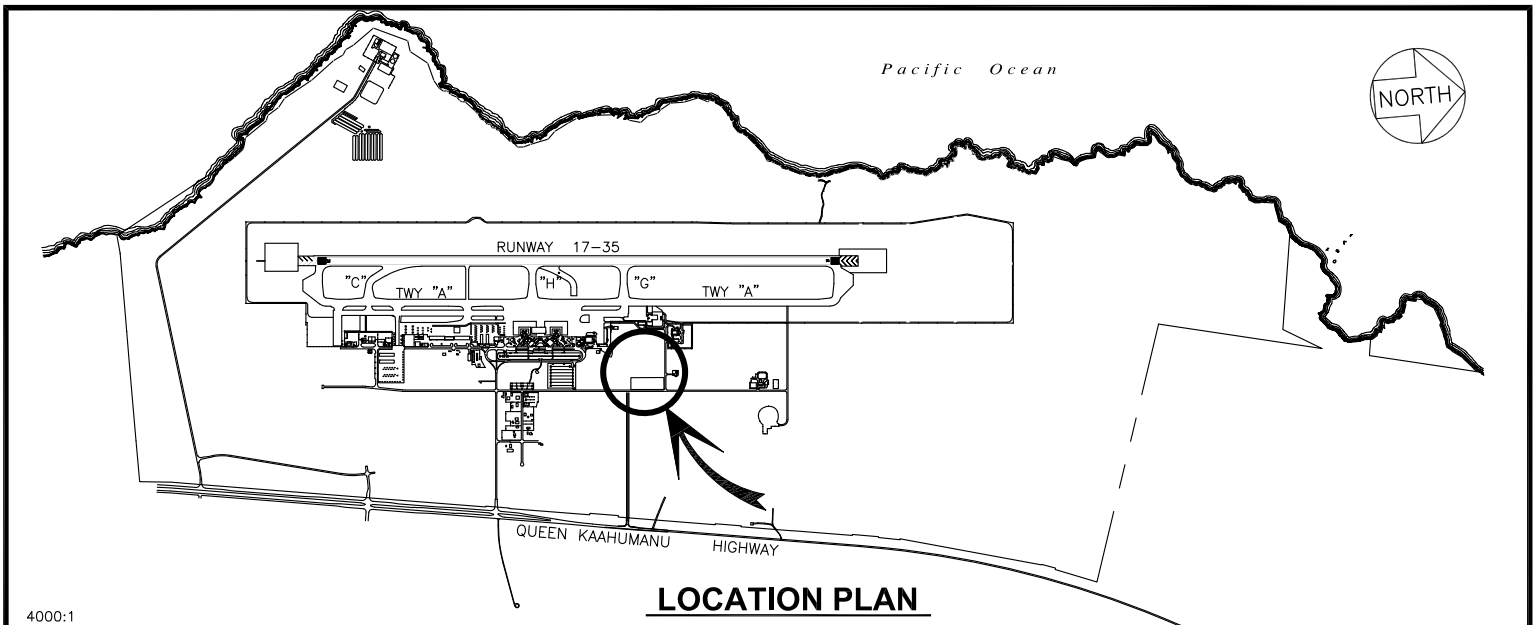
JAS. W. GLOVER, LTD.

TAXIWAY "L" AREA

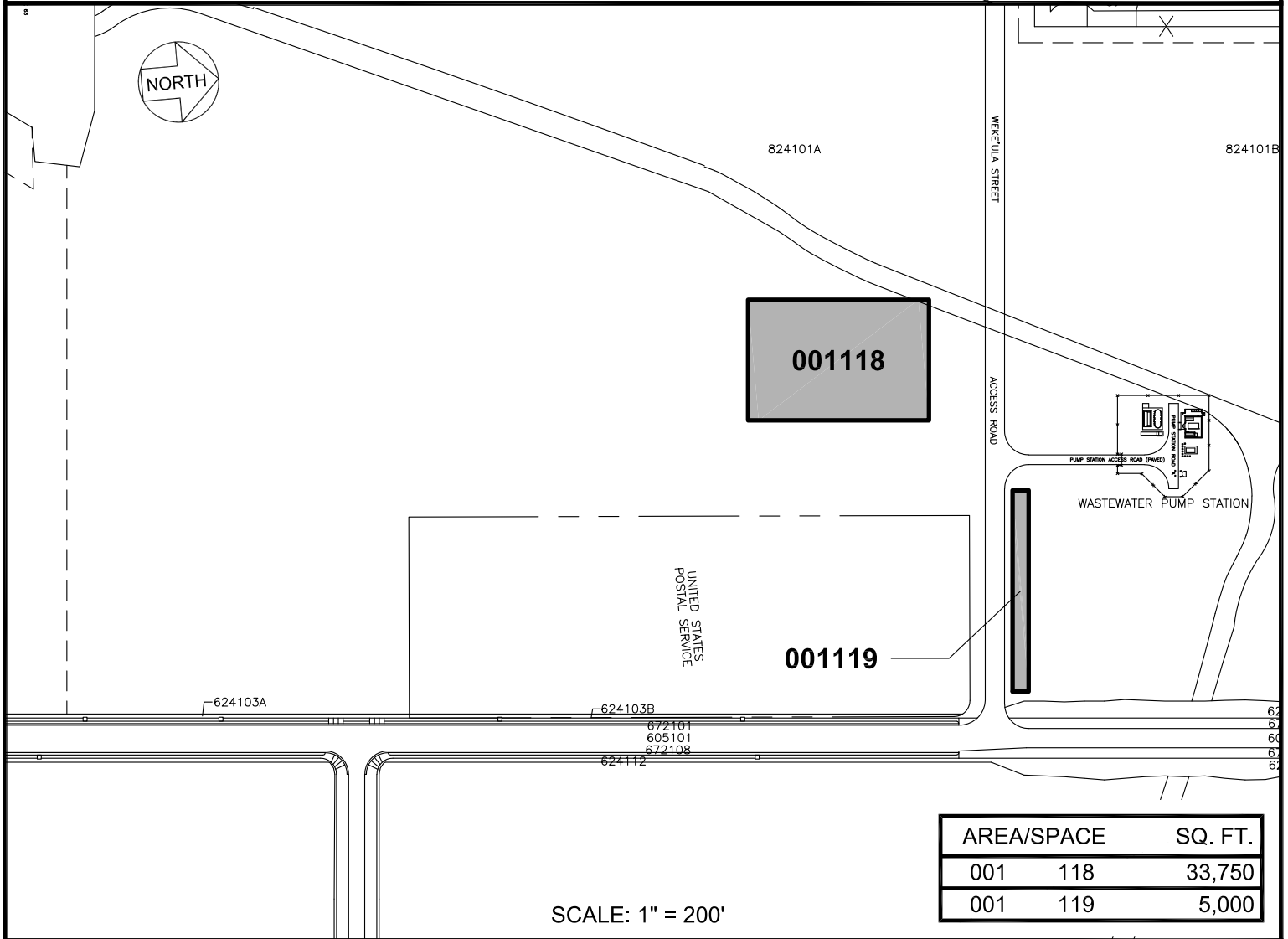
517105B

ELLISON ONIZUKA KONA INTERNATIONAL AIRPORT AT KEAHOLE

N:\AIRPORTS\KOA_KONACAD\PIKOA_517105B-01_DRAFT.DWG



4000:1



RP-9467

DATE : SEPTEMBER 2024

EXHIBIT: **C**



AIRPORTS

JAS. W. GLOVER, LTD.

LOT

001118
001119

ELLISON ONIZUKA KONA INTERNATIONAL AIRPORT AT KEAHOLE

N:\AIRPORTS\KOA_KONACAD\PIK\KOA_001118-01_DRAFT.DWG