

JOSH GREEN, M.D.
GOVERNOR
KE KIA'ĀINA



STATE OF HAWAII | KA MOKU'ĀINA 'O HAWAII'
DEPARTMENT OF TRANSPORTATION | KA 'OIHANA ALAKAU
AIRPORTS
400 RODGERS BOULEVARD, SUITE 700
HONOLULU, HAWAII 96819-1880

EDWIN H. SNIFFEN
DIRECTOR
KA LUNA HO'OKELE

Deputy Directors
Nā Hope Luna Ho'okele
DREANALEE K. KALILI
TAMMY L. LEE
CURT T. OTAGURO
ROBIN K. SHISHIDO

IN REPLY REFER TO:

AIR-PM 25.0436

June 12, 2025

DOT Land Matters
State of Hawaii
Honolulu, Hawaii

ISSUANCE OF A REVOCABLE PERMIT
FOR STORAGE TO STAGE WASTE OIL
HELICOPTER CONSULTANTS OF MAUI, LLC
HILO INTERNATIONAL AIRPORT
TAX MAP KEY: (3) 2-1-012: PORTION OF 009

HAWAII

APPLICANT:

Helicopter Consultants of Maui, LLC (HCM), whose business address is
1 Kahului Airport Road, Kahului, Hawaii 96732.

LEGAL REFERENCE:

Hawaii Revised Statutes (HRS), Sections 26-19 and 171-2, as amended.

LOCATION AND TAX MAP KEY:

Portion of Hilo International Airport (ITO), Hilo, Island of Hawaii,
identified by Tax Map Key: 3rd Division, 2-1-012: Portion of 009.

AREA:

Area/Space No. 513-104C, containing an area of approximately 104 square feet of
improved, unpaved land, as shown and delineated on the attached map labeled Exhibit A.

ZONING:

State Land Use District:	Urban
County of Hawaii:	Industrial (ML-20)

ISSUANCE OF A REVOCABLE PERMIT FOR STORAGE TO STAGE WASTE OIL
HELICOPTER CONSULTANTS OF MAUI, LLC
Page 2

LAND TITLE STATUS:

Section 5(a) lands of the Hawaii Admission Act: Ceded
DHHL 30% entitlement lands pursuant to Hawaii Admission Act YES___ NO X

CURRENT USE STATUS:

Land presently encumbered by Governor's Executive Order No. 1519, dated July 17, 1952, setting aside 550.881 acres, being a portion of General Lyman Field under the control and management of the Hawaii Aeronautics Commission (subsequently transferred to the Department of Transportation) as a site for the Hilo Airport, now known as ITO.

CHARACTER OF USE:

HCM will use the space for storage to stage waste oil to support its commercial helicopter tour operation at ITO.

COMMENCEMENT DATE:

To be determined by the Director of Transportation at a later date.

MONTHLY RENTAL:

\$25.00 (based on the minimum rental charge as determined from the HDOT Schedule of Rates and Charges established by appraisal of Airports property statewide. The calculation using the improved, unpaved land rate of \$0.94 per square foot per annum is less than the minimum rental charge).

SECURITY DEPOSIT:

\$75.00, or three times the monthly rental in effect.

DCCA VERIFICATION:

Place of business registration confirmed:	YES <u>X</u>	NO _____
Registered business name confirmed:	YES <u>X</u>	NO _____
Good standing confirmed:	YES <u>X</u>	NO _____

CHAPTER 343, HRS - ENVIRONMENTAL ASSESSMENT:

The HDOT has determined that the subject areas are covered by the Hilo International Airport Final Environmental Assessment (FEA), dated April 15, 2003, and published by the Office of Environmental Quality Control in the May 8, 2003 issue of The Environmental

ISSUANCE OF A REVOCABLE PERMIT FOR STORAGE TO STAGE WASTE OIL
HELICOPTER CONSULTANTS OF MAUI, LLC

Page 3

Notice. Accordingly, all relevant mitigation from the FEA and best management practices will be implemented to address the minimum impacts of this action.

REMARKS:

HDOT proposes to issue a month-to-month revocable permit to HCM for storage to stage waste oil to support its commercial helicopter tour operation at ITO.

RECOMMENDATION:

Based on this submittal, and testimony and facts presented, the HDOT recommends the Director of Transportation finds that approving the issuance of a month-to-month revocable permit to HCM, including its conditions and rent, will serve the best interests of the State.

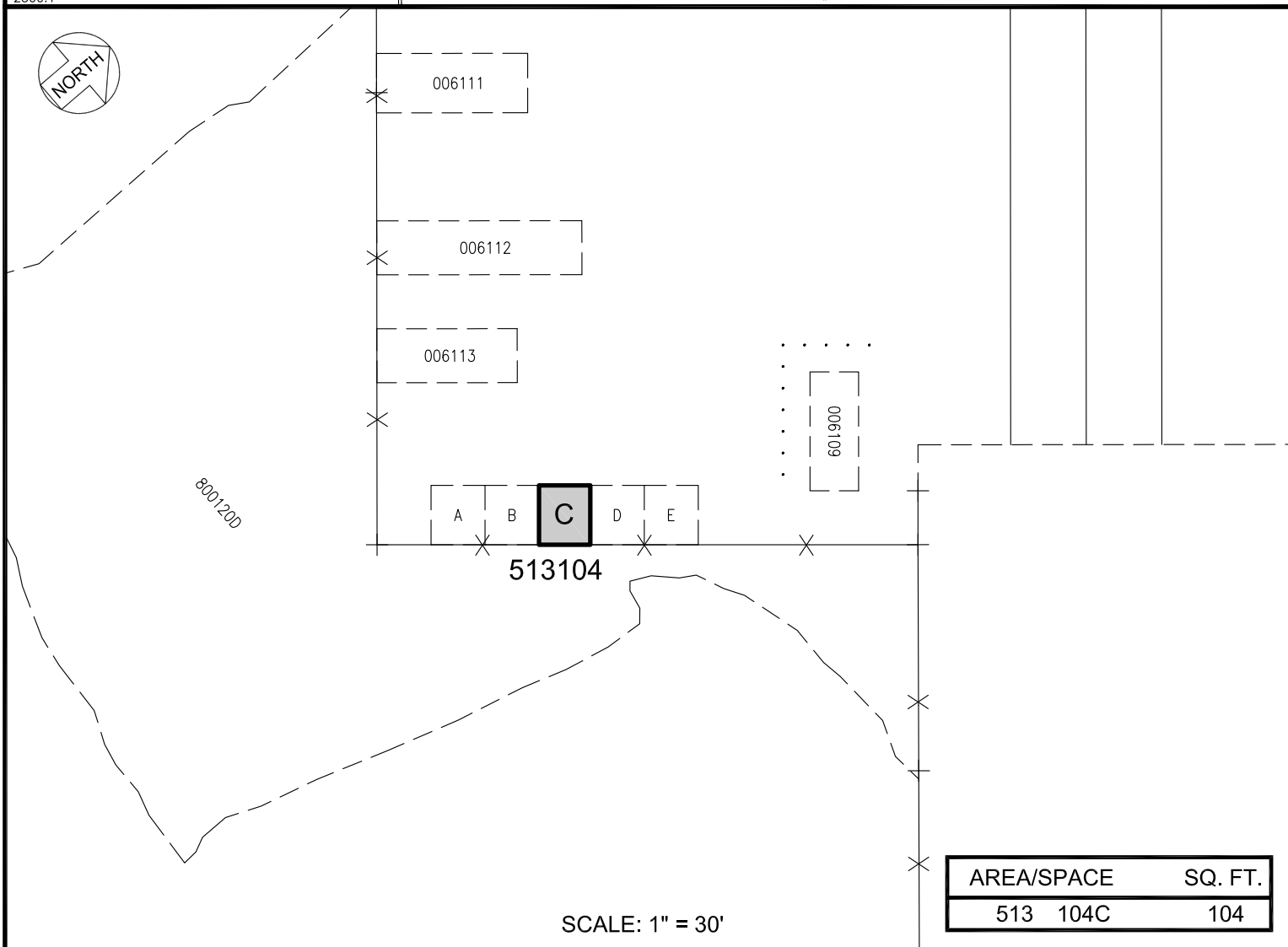
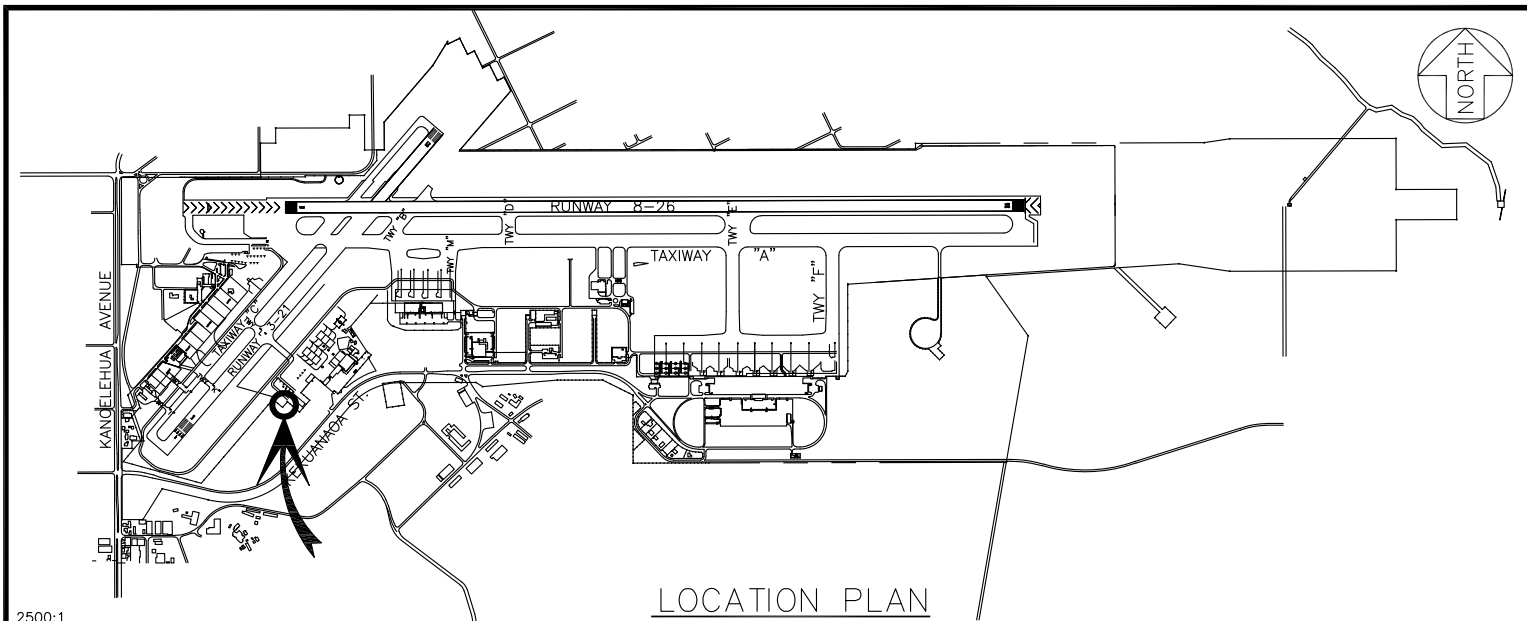
Respectfully submitted,



CURT T. OTAGURO

Deputy Director of Transportation for Airports

Attachment



RP-9678

DATE : OCTOBER 2024

EXHIBIT: **A**



AIRPORTS

HELICOPTER CONSULTANTS
OF MAUI, LLC

OIL STORAGE

513104C

HILO INTERNATIONAL AIRPORT

N:\AIRPORTS\ITO_HILO\CAD\IPMITO_513104C.DWG