

JOSH GREEN, M.D.  
GOVERNOR  
KE KIA'ĀINA



**STATE OF HAWAI'I | KA MOKU'ĀINA 'O HAWAI'I  
DEPARTMENT OF TRANSPORTATION | KA 'OIHANA ALAKAU  
AIRPORTS  
400 RODGERS BOULEVARD, SUITE 700  
HONOLULU, HAWAII 96819-1880**

EDWIN H. SNIFFEN  
DIRECTOR  
KA LUNA HO'OKELE

Deputy Directors  
Nā Hope Luna Ho'okele  
DREANALEE K. KALILI  
TAMMY L. LEE  
CURT T. OTAGURO  
ROBIN K. SHISHIDO

IN REPLY REFER TO:

**AIR-PM 25.0511**

July 10, 2025

DOT Land Matters  
State of Hawaii  
Honolulu, Hawaii

ISSUANCE OF A REVOCABLE PERMIT FOR IMPROVED, UNPAVED LAND FOR  
STORAGE TO STAGE WASTE OIL  
SAFARI AVIATION, INC.  
HILO INTERNATIONAL AIRPORT  
TAX MAP KEY: (3) 2-1-012: PORTION OF 009

**HAWAII**

**APPLICANT:**

Safari Aviation, Inc. (Safari), whose business address is 3225 Akahi Street,  
Lihue, Hawaii 96766.

**LEGAL REFERENCE:**

Hawaii Revised Statutes (HRS), Sections 26-19 and 171-2, as amended.

**LOCATION AND TAX MAP KEY:**

Portion of Hilo International Airport (ITO), Hilo, Island of Hawaii,  
identified by Tax Map Key: 3rd Division, 2-1-012: Portion of 009.

**AREA:**

Area/Space No. 006-122A, containing an area of approximately 110 square feet of  
improved, unpaved land, as shown and delineated on the attached map labeled Exhibit A.

**ZONING:**

State Land Use District:	Urban
County of Hawaii:	Industrial (ML-20)

ISSUANCE OF A REVOCABLE PERMIT FOR IMPROVED, UNPAVED LAND FOR  
STORAGE TO STAGE WASTE OIL, SAFARI AVIATION, INC.

Page 2

LAND TITLE STATUS:

Section 5(a) lands of the Hawaii Admission Act: Ceded

DHHL 30% entitlement lands pursuant to Hawaii Admission Act YES\_\_\_ NO X

CURRENT USE STATUS:

Land presently encumbered by Governor's Executive Order No. 1519, dated July 17, 1952, setting aside 550.881 acres, being a portion of General Lyman Field under the control and management of the Hawaii Aeronautics Commission [subsequently transferred to the State of Hawaii Department of Transportation (HDOT)] as a site for the Hilo Airport, now known as ITO.

CHARACTER OF USE:

Safari will use the space for storage to stage waste oil to support a commercial helicopter tour and charter operation at ITO.

COMMENCEMENT DATE:

To be determined by the Director of Transportation at a later date.

MONTHLY RENTAL:

\$25.00 (based on the minimum rental charge as determined from the HDOT Schedule of Rates and Charges established by appraisal of Airports property statewide. The calculation using the improved, unpaved land rate of \$0.94 per square foot per annum is less than the minimum rental charge).

SECURITY DEPOSIT:

\$75.00, or three times the monthly rental in effect.

DCCA VERIFICATION:

Place of business registration confirmed:	YES <u>X</u>	NO _____
Registered business name confirmed:	YES <u>X</u>	NO _____
Good standing confirmed:	YES <u>X</u>	NO _____

CHAPTER 343, HRS - ENVIRONMENTAL ASSESSMENT:

The HDOT has determined that the subject areas are covered by the Hilo International Airport Final Environmental Assessment (FEA), dated April 15, 2003, and published by the

ISSUANCE OF A REVOCABLE PERMIT FOR IMPROVED, UNPAVED LAND FOR  
STORAGE TO STAGE WASTE OIL, SAFARI AVIATION, INC.

Page 3

Office of Environmental Quality Control in the May 8, 2003 issue of The Environmental Notice. Accordingly, all relevant mitigation from the FEA and best management practices will be implemented to address the minimum impacts of this action.

REMARKS:

HDOT proposes to issue a month-to-month revocable permit to Safari for improved, unpaved land for storage to stage waste oil to support a commercial helicopter tour and charter operation at ITO.

RECOMMENDATION:

Based on this submittal, and testimony and facts presented, the HDOT recommends the Director of Transportation finds that approving the issuance of a month-to-month revocable permit to Safari, including its conditions and rent, will serve the best interests of the State.

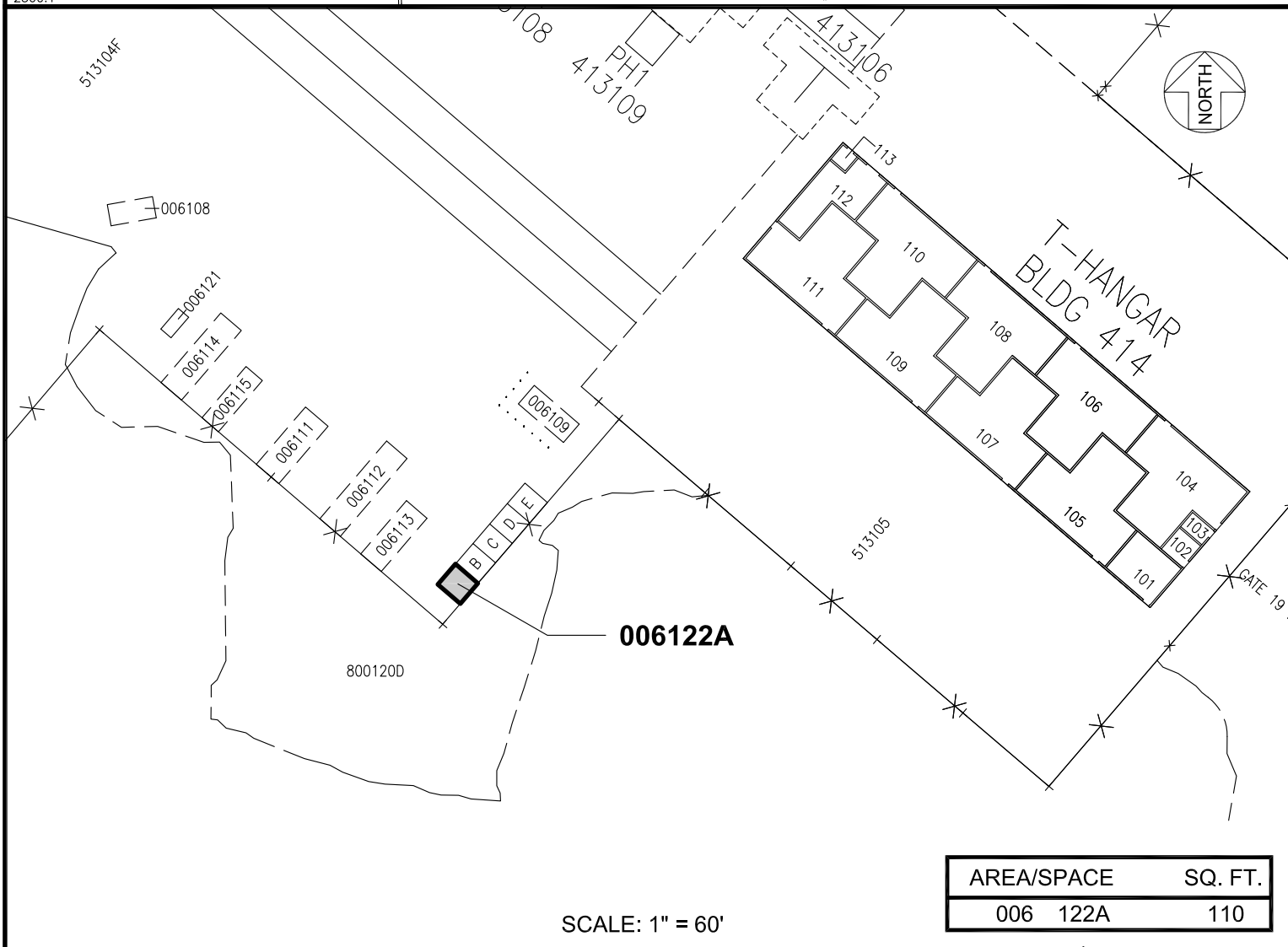
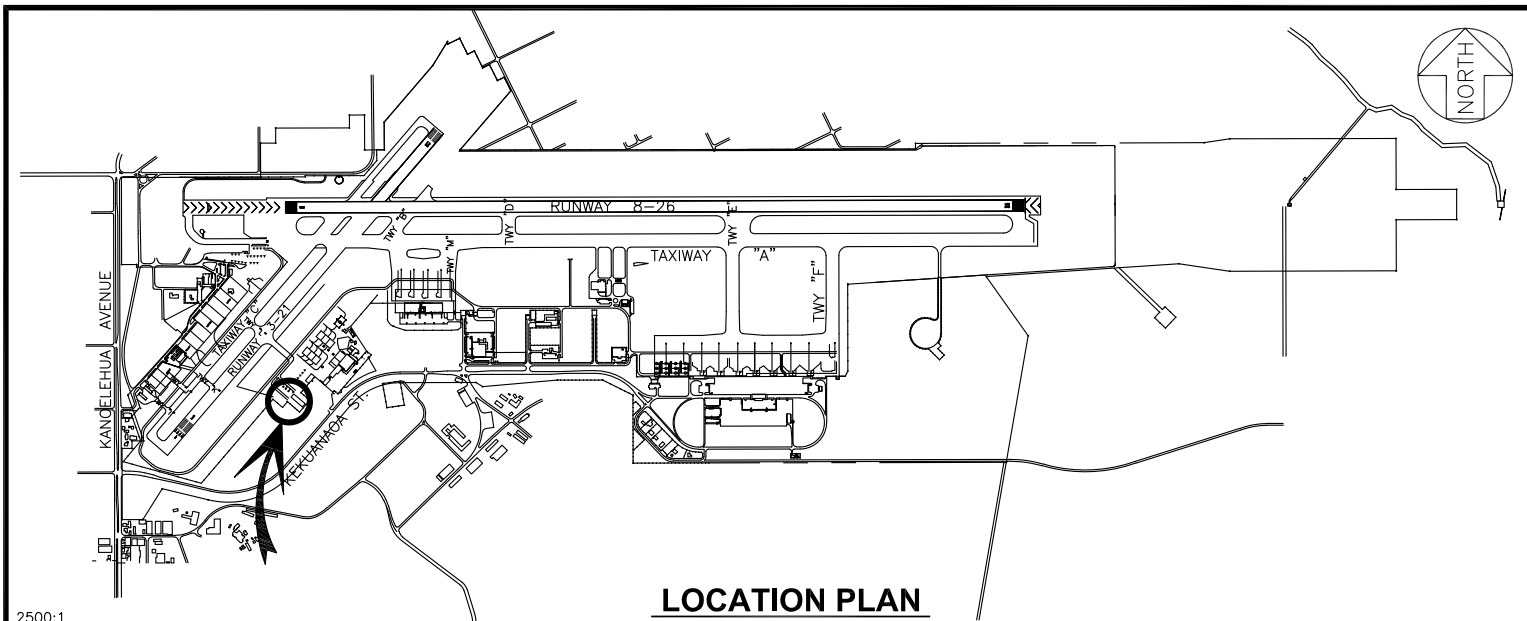
Respectfully submitted,




CURT T. OTAGURO

Deputy Director of Transportation for Airports

Attachment



RP-9697		DATE : JUNE 2025		EXHIBIT: A	
<div><div><div>DEPARTMENT OF TRANSPORTATION</div><div></div><div>STATE OF HAWAII</div></div><div>AIRPORTS</div></div>		SAFARI AVIATION, INC.		LOT	
				006122A	

**HILO INTERNATIONAL AIRPORT**

N:\AIRPORTS\ITO\_HILO\CAD\PM\ITO\_006122A-01.DWG