



**STATE OF HAWAII | KA MOKU'ĀINA 'O HAWAI'I
DEPARTMENT OF TRANSPORTATION | KA 'OIHANA ALAKAU
AIRPORTS
400 RODGERS BOULEVARD, SUITE 700
HONOLULU, HAWAII 96819-1880**

AIR-PM 25.0610

August 14, 2025

DOT Land Matters
State of Hawaii
Honolulu, Hawaii

ISSUANCE OF A REVOCABLE PERMIT FOR THREE TIE DOWNS
FOR AIRCRAFT PARKING AND CARGO OPERATIONS IN SUPPORT
OF A COMMERCIAL CARGO TRANSPORT SERVICE
CORPORATE AIR
DANIEL K. INOUE INTERNATIONAL AIRPORT
TAX MAP KEY: (1) 1-1-003: 001 (PORTION)

OAHU

APPLICANT:

Corporate Air, whose mailing address is P.O. Box 81050, Billings, Montana 59102.

LEGAL REFERENCE:

Hawaii Revised Statutes (HRS), Section 26-19 and 171-2, as amended.

LOCATION AND TAX MAP KEY:

A portion of Daniel K. Inouye International Airport (Airport) identified as South Ramp, Island of Oahu, State of Hawaii, identified by Tax Map Key: 1st Division, 1-1-003:001(portion).

AREA:

Area/Room Nos. 423-190D, 423-190E, and 423-190F, each containing an area of approximately 5,225 square feet, and as shown and delineated on the attached map labeled Exhibit A.

ZONING:

State Land Use District: Urban
City and County of Honolulu LUO: Industrial (I-2)

ISSUANCE OF A REVOCABLE PERMIT FOR THREE TIE DOWNS FOR AIRCRAFT
PARKING AND CARGO OPERATIONS IN SUPPORT OF A COMMERCIAL CARGO
TRANSPORT SERVICE, CORPORATE AIR
PAGE 2

LAND TITLE STATUS:

Non-ceded - Section 5(a) lands of the Hawaii Admission Act
DHHL 30% entitlement lands pursuant to Hawaii Admission Act YES ____ NO X

CURRENT USE STATUS:

Land presently encumbered by Governor's Executive Order No. 3201, dated
June 8, 1983, setting aside 3,152.177 acres designated as the Airport under the control
and management of the State of Hawaii Department of Transportation (HDOT), for
Airport purposes.

CHARACTER OF USE:

Corporate Air will use the three tie-downs for aircraft parking and cargo operations for
three Caravan aircraft (2024 Textron Aviation C-408, Tail Nos. N-774FX, N-775FX, and
N-776X), to provide feeder service on behalf of FedEx Express in support of its
commercial cargo transport service at the Airport.

COMMENCEMENT DATE:

To be determined by the Director of Transportation at a later date.

MONTHLY RENTAL:

\$12,435.50, as determined from the HDOT Schedule of Rates and Charges, improved
paved land at \$9.52 rate per square foot per annum established by appraisal of Airports
properties statewide.

SECURITY DEPOSIT:

\$37,306.50, or three times the monthly rental in effect.

DCCA VERIFICATION:

Place of business registration confirmed:	YES <u>X</u>	NO ____
Registered business name confirmed:	YES <u>X</u>	NO ____
Good standing confirmed:	YES <u>X</u>	NO ____

ISSUANCE OF A REVOCABLE PERMIT FOR THREE TIE DOWNS FOR AIRCRAFT
PARKING AND CARGO OPERATIONS IN SUPPORT OF A COMMERCIAL CARGO
TRANSPORT SERVICE, CORPORATE AIR
PAGE 3

CHAPTER 343, HRS - ENVIRONMENTAL ASSESSMENT:

The environmental impacts of the proposed action to the subject land area are covered by the Honolulu International Airport Master Plan Update and Noise Compatibility Program Environmental Assessment (EA), State Project No. AO1011-03. The EA is a joint State and Federal document, dated September 1989 and published in the October 23, 1989 issue of the OEQC Bulletin. Accordingly, relevant mitigation from the EA and HDOT environmental best management practice will address minimal impacts from this action.

REMARKS:

HDOT proposes to issue a month-to-month revocable permit to Corporate Air for use of tie-downs for aircraft parking and cargo operations to support its commercial cargo transport service at the Airport.

RECOMMENDATION:

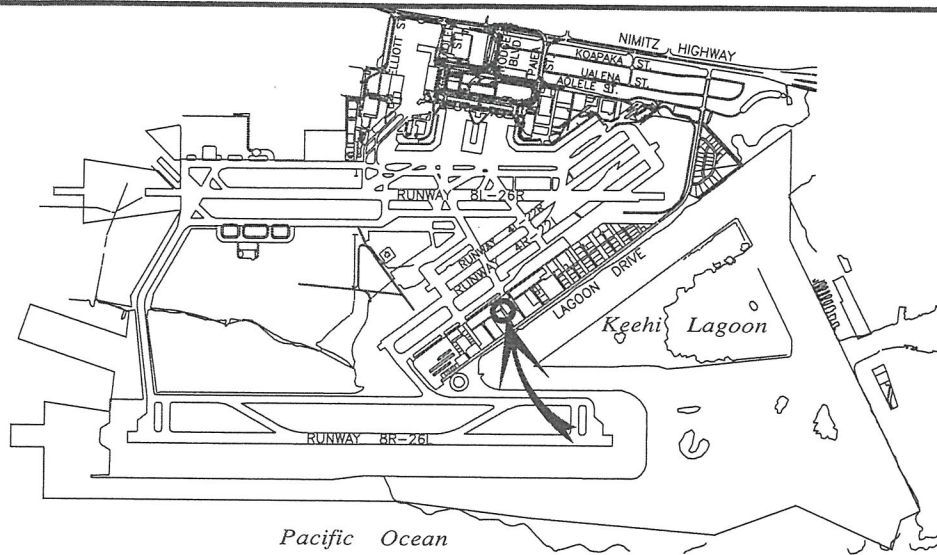
Based on this submittal, and testimony and facts presented, the HDOT recommends the Director of Transportation finds that approving the issuance of a month-to-month revocable permit to Corporate Air, including its conditions and rent, will serve the best interests of the State.

Respectfully submitted,

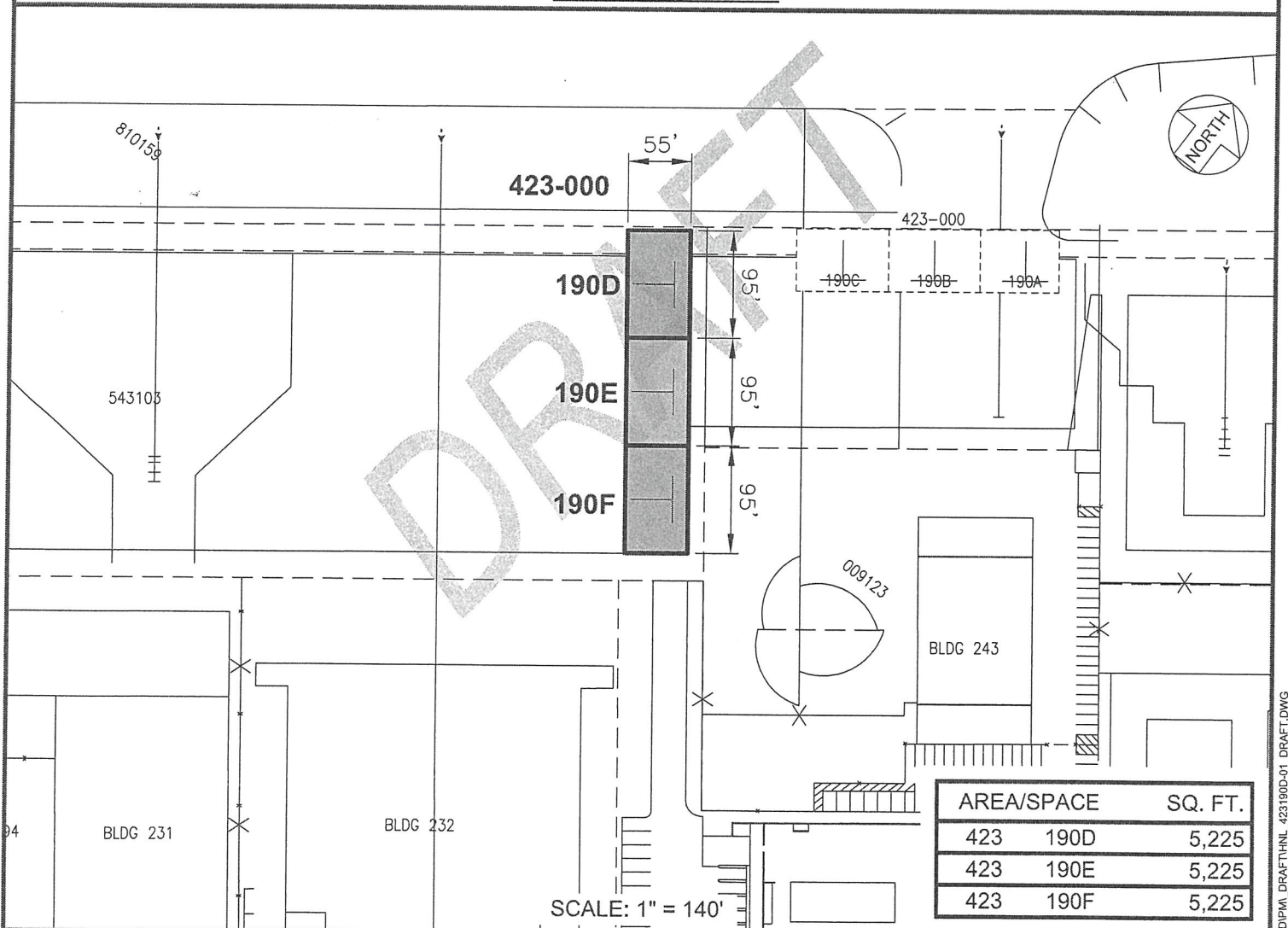


CURT T. OTAGURO
Deputy Director of Transportation for Airports

Attachment



LOCATION PLAN



DATE : APRIL 2025

EXHIBIT: **A**



AIRPORTS

CORPORATE AIR

TIE-DOWNS
SOUTH RAMP

423190D-F

DANIEL K. INOUE INTERNATIONAL AIRPORT

N:\AIRPORTS\HNL_HONOLULU\CA\DWG\190D-F\190D-F_DRAFT.DWG