

JOSH GREEN, M.D.
GOVERNOR
KE KIA'ĀINA



EDWIN H. SNIFFEN
DIRECTOR
KA LUNA HO'OKELE

Deputy Directors
Nā Hope Luna Ho'okele
DREANALEE K. KALILI
TAMMY L. LEE
CURT T. OTAGURO
ROBIN K. SHISHIDO

**STATE OF HAWAI'I | KA MOKU'ĀINA 'O HAWAI'I
DEPARTMENT OF TRANSPORTATION | KA 'OIHANA ALAKAU
AIRPORTS
400 RODGERS BOULEVARD, SUITE 700
HONOLULU, HAWAII 96819-1880**

IN REPLY REFER TO:

AIR-PM 25.0618

August 14, 2025

DOT Land Matters
State of Hawaii
Honolulu, Hawaii

ISSUANCE OF A REVOCABLE PERMIT FOR AIRCRAFT PARKING
MERRITT PACIFIC HAWAII, INC.
KAWAIHAPAI AIRFIELD, WAIALUA, HAWAII
TAX MAP KEY: (1) 6-8-014:001 (PORTION)

OAHU

REQUEST:

Issuance of a Revocable Permit for Aircraft Parking (Parking Permit) to
Merritt Pacific Hawaii, Inc., for a tie-down, situated at Kawaihapai Airfield.

APPLICANT:

Merritt Pacific Hawaii, Inc., whose mailing address is P.O. Box 770,
Waialua, Hawaii 96791.

LEGAL REFERENCE:

Hawaii Revised Statutes (HRS), Section 26-19 and 171-2, as amended.

LOCATION AND TAX MAP KEY:

A portion of Kawaihapai Airfield, Waialua, Island of Oahu, State of Hawaii,
identified by Tax Map Key: 1st Division, 6-8-014:001 (portion).

AREA:

Area/Space No. 405-106, containing an area of approximately 1,890 square feet,
as shown and delineated on the attached map labeled Exhibit A.

ISSUANCE OF A REVOCABLE PERMIT FOR AIRCRAFT PARKING
MERRITT PACIFIC HAWAII, INC.
Page 2

ZONING:

State Land Use District: Agriculture
City and County of Honolulu LUO: AG-2

LAND TITLE STATUS:

Ceded land, which the State of Hawaii is currently leasing the land from the United States of America.

CHARACTER OF USE:

Aircraft tie-down (Schweizer SGS 2-32, Tail No. N232GF).

COMMENCEMENT DATE:

To be determined by the Director of Transportation at a later date.

MONTHLY RENTAL:

\$55.00, as determined from the State of Hawaii Department of Transportation (HDOT) Schedule of Rates and Charges, established by appraisal of Airports property statewide.

SECURITY DEPOSIT:

\$165.00, or three times the monthly rental in effect.

CHAPTER 343, HRS - ENVIRONMENTAL ASSESSMENT:

The subject land area is covered by the revised and updated Environmental Assessment for the Dillingham Airfield Master Plan and FAR Part 150 Noise Compatibility Program project, referenced as State Contract No. 26985, State Project No. AO2011-01. This Environmental Assessment evaluated the environmental effects of the recommended Dillingham Airfield Master Plan to meet existing and forecast general aviation demands and was prepared for the HDOT.

REMARKS:

HDOT proposes to issue a month-to-month Parking Permit to Merritt Pacific Hawaii, Inc., for use of a tie-down for aircraft parking, situated at Kawaihapai Airfield.

ISSUANCE OF A REVOCABLE PERMIT FOR AIRCRAFT PARKING
MERRITT PACIFIC HAWAII, INC.
Page 3

RECOMMENDATION:

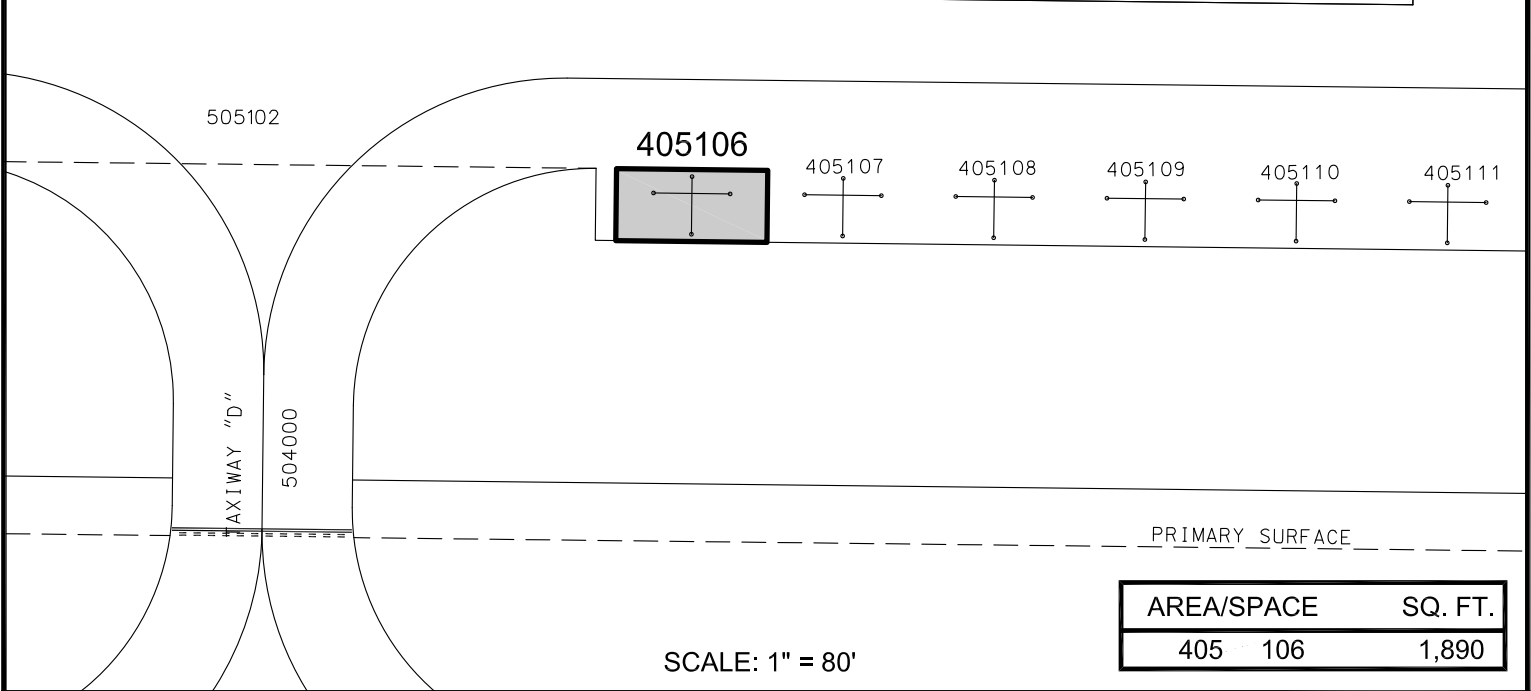
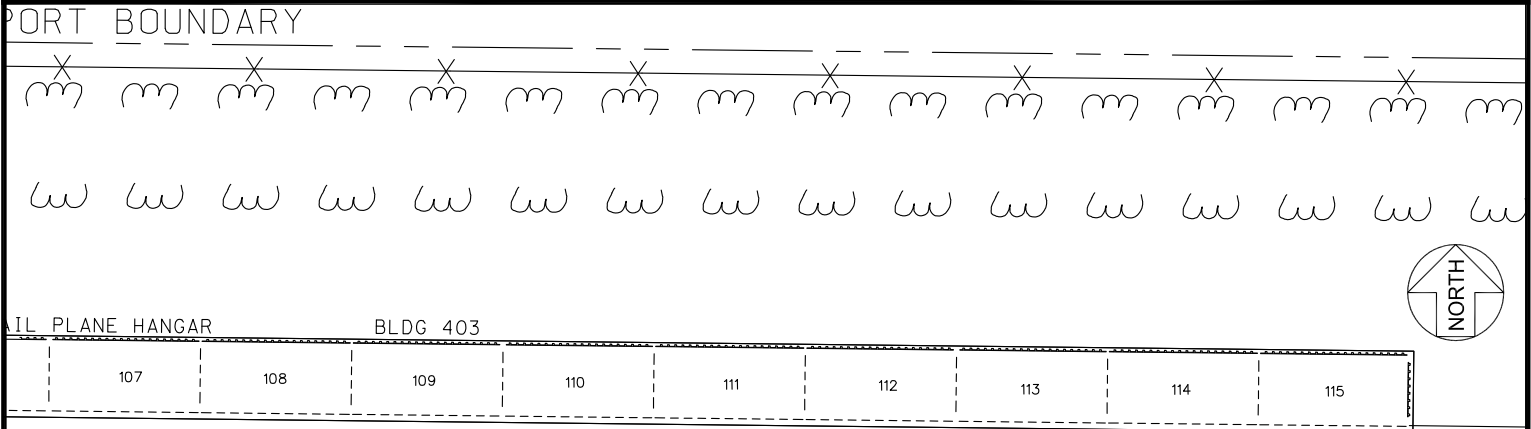
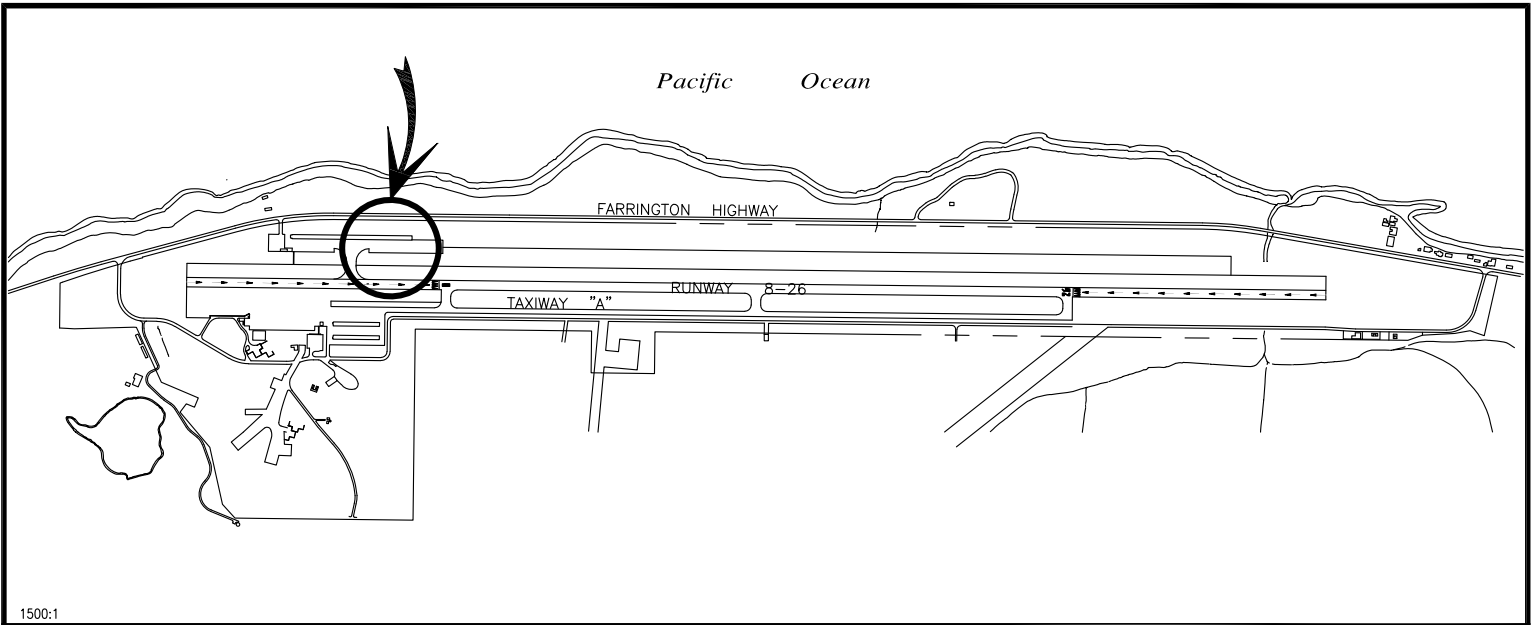
Based on this submittal, and testimony and facts presented, the HDOT recommends the Director of Transportation finds that approving the issuance of a month-to-month Parking Permit to Merritt Pacific Hawaii, Inc., including its conditions and rent, will serve the best interests of the State.

Respectfully submitted,

A handwritten signature in black ink, appearing to read "Curt T. Otaguro", with a stylized flourish at the end.

CURT T. OTAGURO
Deputy Director of Transportation for Airports

Attachment



PP-25-0010

DATE : JULY 2025

EXHIBIT: A



AIRPORTS

MERRITT PACIFIC
HAWAII, INC.

TIE-DOWN

405106

DILLINGHAM AIRFIELD

N:\AIRPORTS\HDI_DILLINGHAM\CAD\PM\HDI_405106-01.DWG