



**STATE OF HAWAI'I | KA MOKU'ĀINA 'O HAWAI'I
DEPARTMENT OF TRANSPORTATION | KA 'OIHANA ALAKAU
AIRPORTS
400 RODGERS BOULEVARD, SUITE 700
HONOLULU, HAWAII 96819-1880**

EDWIN H. SNIFFEN
DIRECTOR
KA LUNA HO'OKELE

Deputy Directors
Nā Hope Luna Ho'okele
DREANALEE K. KALILI
TAMMY L. LEE
CURT T. OTAGURO
ROBIN K. SHISHIDO

IN REPLY REFER TO:

AIR-PM 25.0660

August 14, 2025

DOT Land Matters
State of Hawaii
Honolulu, Hawaii

ISSUANCE OF A REVOCABLE PERMIT FOR CARGO SPACE AND LAND
TO SUPPORT SIGNATORY AIRLINE CARRIER CARGO OPERATIONS
FEDERAL EXPRESS CORPORATION
HILO INTERNATIONAL AIRPORT
TAX MAP KEY: (3) 2-1-012: PORTION OF 009

HAWAII

APPLICANT:

Federal Express Corporation (FedEx), whose mailing address is 3680 Hacks Cross Road,
Building H, 3rd Floor, Memphis, Tennessee 38125.

LEGAL REFERENCE:

Hawaii Revised Statutes (HRS), Sections 26-19 and 171-2, as amended.

LOCATION AND TAX MAP KEY:

Portion of Hilo International Airport (ITO), Hilo, Island of Hawaii,
identified by Tax Map Key: 3rd Division, 2-1-012: Portion of 009.

AREAS:

Building

Building/Room No. 139-116, containing an area of approximately 10,967 square feet, as
shown and delineated on the attached map labeled Exhibit A.

Improved, Unpaved Land

Area/Space No. 800-143, containing an area of approximately 700 square feet, as shown and
delineated on the attached map labeled Exhibit A.

ISSUANCE OF A REVOCABLE PERMIT FOR CARGO SPACE AND LAND
TO SUPPORT SIGNATORY AIRLINE CARRIER CARGO OPERATIONS
FEDERAL EXPRESS CORPORATION
Page 2

Improved, Paved Land

Area/Space No. 612-102N, containing an area of approximately 642 square feet;
Area/Space No. 612-102P, containing an area of approximately 642 square feet;
Area/Space No. 612-102Q, containing an area of approximately 642 square feet;
Area/Space No. 612-102R, containing an area of approximately 642 square feet; and
Area/Space No. 612-102S, containing an area of approximately 642 square feet,
as shown and delineated on the attached map labeled Exhibit A.

ZONING:

State Land Use District: Urban
County of Hawaii: Industrial (ML-20)

LAND TITLE STATUS:

Section 5(a) lands of the Hawaii Admission Act: Ceded
DHHL 30% entitlement lands pursuant to Hawaii Admission Act YES___ NO X

CURRENT USE STATUS:

Land presently encumbered by Governor's Executive Order No. 2653, dated March 5, 1973, setting aside 284.466 acres designated as General Lyman Field under the control and management of the State of Hawaii, Department of Transportation, Airports for public purposes.

CHARACTER OF USE:

FedEx will use the cargo space for package delivery operations, the improved, unpaved land for a storage container and generator, and the improved, paved land and for tractor trailers and straight trucks parking in support of its signatory airline carrier cargo operation at ITO.

COMMENCEMENT DATE:

To be determined by the Director of Transportation at a later date.

MONTHLY RENTAL:

\$11,104.78 (\$9,459.73 as determined from the HDOT Schedule of Rates and Charges established by appraisal of Airport property statewide plus \$1,645.05 for maintenance).

SECURITY DEPOSIT:

\$33,314.34, or three times the monthly rental in effect.

ISSUANCE OF A REVOCABLE PERMIT FOR CARGO SPACE AND LAND
TO SUPPORT SIGNATORY AIRLINE CARRIER CARGO OPERATIONS
FEDERAL EXPRESS CORPORATION

Page 3

DCCA VERIFICATION:

Place of business registration confirmed:	YES <u>X</u>	NO <u> </u>
Registered business name confirmed:	YES <u>X</u>	NO <u> </u>
Good standing confirmed:	YES <u>X</u>	NO <u> </u>

CHAPTER 343, HRS - ENVIRONMENTAL ASSESSMENT:

The HDOT has determined that the subject areas are covered by the Hilo International Airport Final Environmental Assessment (FEA), dated April 15, 2003, and published by the Office of Environmental Quality Control in the May 8, 2003 issue of The Environmental Notice. Accordingly, all relevant mitigation from the FEA and best management practices will be implemented to address the minimum impacts of this action.

REMARKS:

The HDOT proposes to issue a month-to-month revocable permit to FedEx for cargo space and land to support its signatory airline carrier cargo operation at ITO.

RECOMMENDATION:

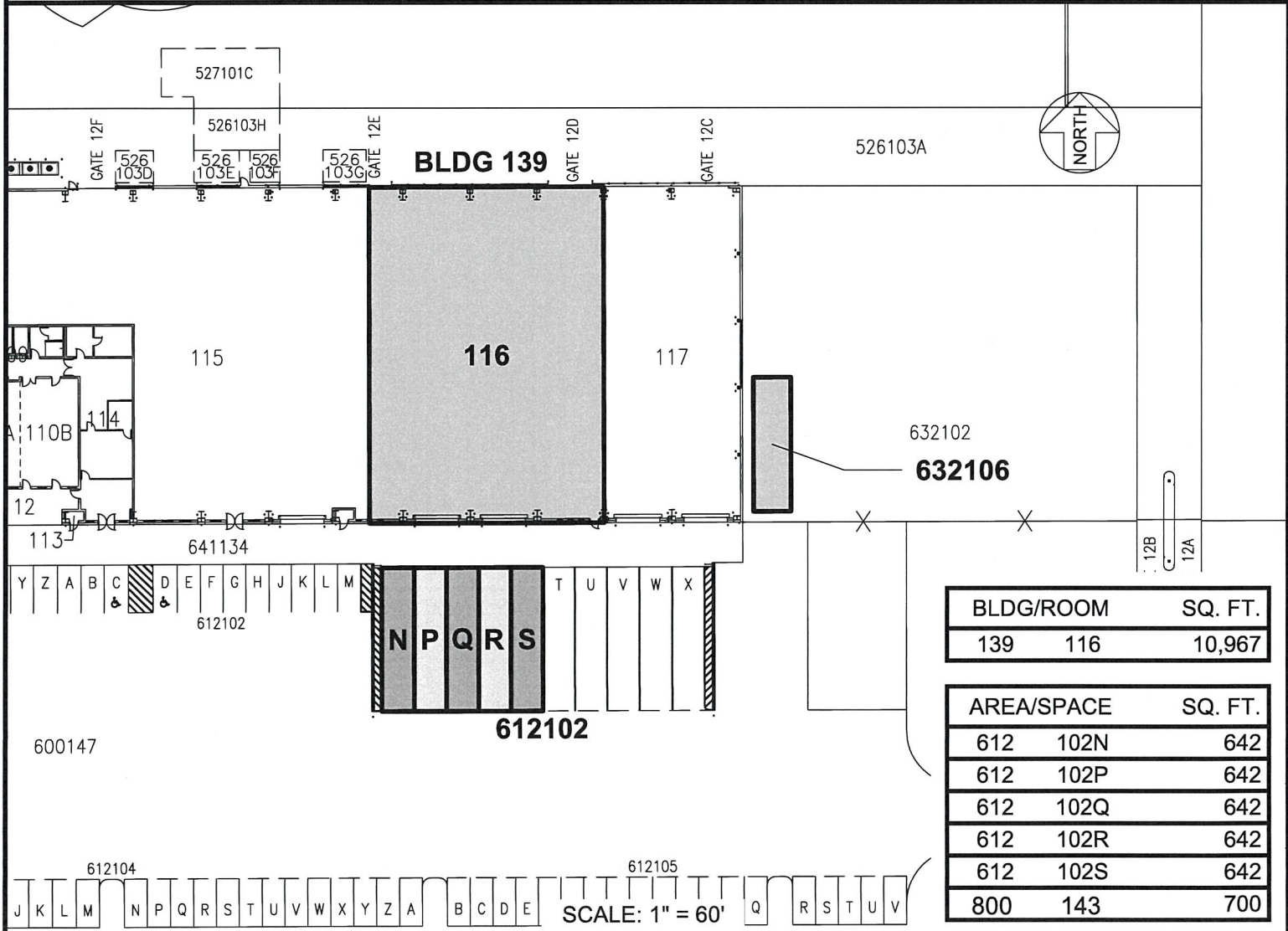
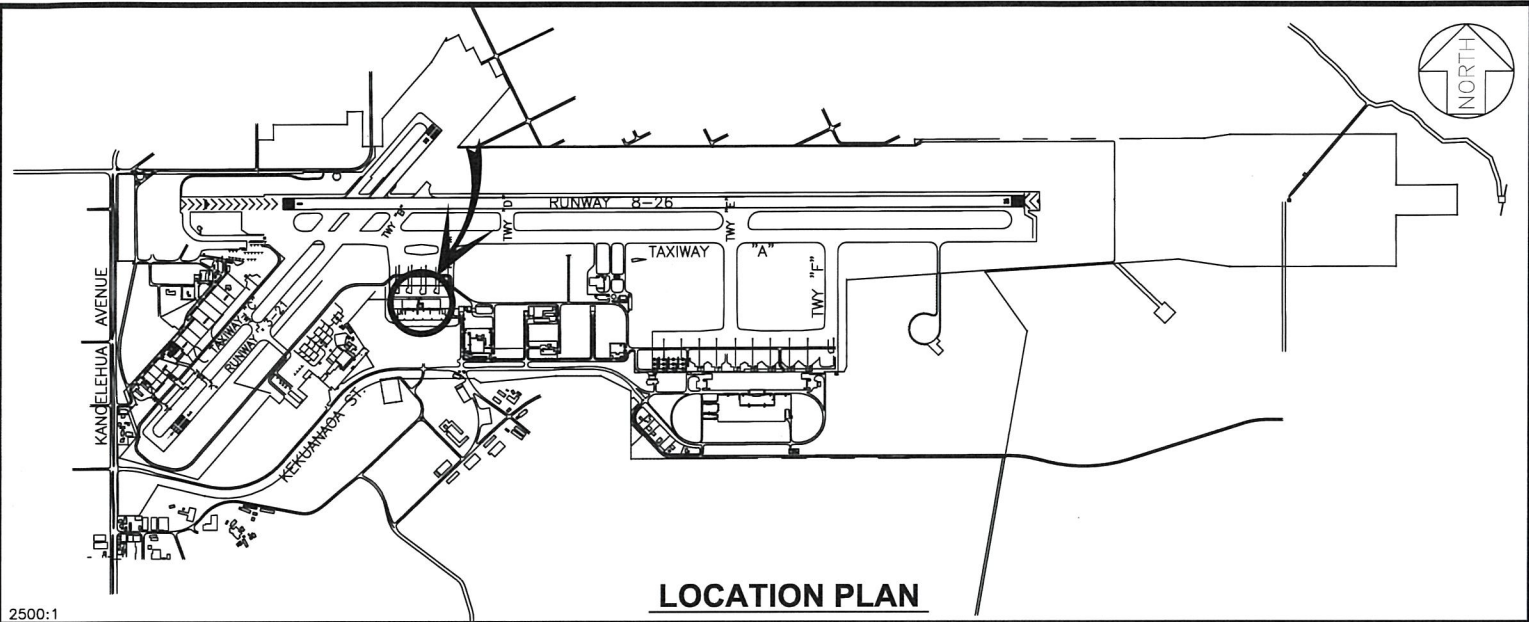
Based on this submittal, and testimony and facts presented, the HDOT recommends the Director of Transportation finds that approving the issuance of a month-to-month revocable permit to FedEx, including its conditions and rent, will serve the best interests of the State.

Respectfully submitted,



CURT T. OTAGURO
Deputy Director of Transportation for Airports

Attachment



RP-9719

DATE : JULY 2025

EXHIBIT: **A**



AIRPORTS

FEDERAL EXPRESS
CORPORATION

BLDG 139
HOLD CARGO BUILDING
GROUND LEVEL

139116
612102N-S
632106

HILO INTERNATIONAL AIRPORT

N:\AIRPORTS\HILO\CAD\PIW\139116-02.DWG