

JOSH GREEN, M.D.
GOVERNOR
KE KIA'ĀINA



**STATE OF HAWAII | KA MOKU'ĀINA 'O HAWAII'
DEPARTMENT OF TRANSPORTATION | KA 'OIHANA ALAKAU
AIRPORTS
400 RODGERS BOULEVARD, SUITE 700
HONOLULU, HAWAII 96813-5097**

EDWIN H. SNIFFEN
DIRECTOR
KA LUNA HO'OKELE

Deputy Directors
Nā Hope Luna Ho'okele
DREANALEE K. KALILI
TAMMY L. LEE
CURT T. OTAGURO
ROBIN K. SHISHIDO

IN REPLY REFER TO:

AIR-PM 25.0690

August 28, 2025

DOT Land Matters
State of Hawaii
Honolulu, Hawaii

ISSUANCE OF A REVOCABLE PERMIT FOR A NETWORK SERVER ROOM
AND SECURITY EQUIPMENT STORAGE
HAWAIIAN AIRLINES, INC.
DANIEL K. INOUE INTERNATIONAL AIRPORT
TAX MAP KEY: (1) 1-1-003: 001 (PORTION)

OAHU

APPLICANT:

Hawaiian Airlines, Inc. (Hawaiian Airlines), whose business address is
3375 Koapaka Street, Suite G350, Honolulu, Hawaii 96819.

LEGAL REFERENCE:

Hawaii Revised Statutes (HRS), Sections 26-19 and 171-2, as amended.

LOCATION AND TAX MAP KEY:

A portion of Building 310, Terminal 1, Ground Level at Daniel K. Inouye
International Airport (Airport), Island of Oahu, State of Hawaii, identified by
Tax Map Key: 1st Division, 1-1-003: 001 (Portion).

AREA:

Building/Room No. 310-175, containing an area of approximately 119 square feet,
as shown and delineated on the attached map labeled Exhibit A.

ISSUANCE OF A REVOCABLE PERMIT FOR A NETWORK SERVER ROOM AND
SECURITY EQUIPMENT STORAGE, HAWAIIAN AIRLINES, INC.

Page 2

ZONING:

State Land Use District: Urban
City and County of Honolulu LUO: Industrial (I-2)

LAND TITLE STATUS:

Non-ceded - Section 5(a) lands of the Hawaii Admission Act
DHHL 30% entitlement lands pursuant to Hawaii Admission Act YES ____ NO X

CURRENT USE STATUS:

Land presently encumbered by Governor's Executive Order No. 3201, dated
June 8, 1983, setting aside 3,152.177 acres designated as Daniel K. Inouye
International Airport under the control and management of the State of Hawaii
Department of Transportation (HDOT) for Airport purposes.

CHARACTER OF USE:

Hawaiian Airlines will use the space as a network server room and security equipment
storage as part of their signatory airline operations at the Airport.

COMMENCEMENT DATE:

To be determined by the Director of Transportation at a later date.

MONTHLY RENTAL:

\$1,548.39 per month (as determined from the Airports Signatory Rates and Charges,
Hawaii Airports System, effective July 1, 2025).

SECURITY DEPOSIT:

\$4,645.17, or three times the monthly rental in effect.

DCCA VERIFICATION:

Place of business registration confirmed:	YES <u>X</u>	NO ____
Registered business name confirmed:	YES <u>X</u>	NO ____
Good standing confirmed:	YES <u>X</u>	NO ____

ISSUANCE OF A REVOCABLE PERMIT FOR A NETWORK SERVER ROOM AND
SECURITY EQUIPMENT STORAGE, HAWAIIAN AIRLINES, INC.

Page 3

CHAPTER 343, HRS - ENVIRONMENTAL ASSESSMENT:

The environmental impacts of the proposed action to the subject land area are covered by the Honolulu International Airport, Airport Modernization Program Environmental Assessment (EA), State Project No. AO1030-13. The EA is a joint State and Federal document dated January 2013, and published in the February 8, 2013 issue of the OEQC Bulletin. Accordingly, the actions have been determined to have little or no impact upon the environment.

REMARKS:

In accordance with Section 171-55, HRS, relating to Permits, HDOT proposes to issue a month-to-month revocable permit to Hawaiian Airlines for a network server room and security equipment storage as part of their signatory airline operations at the Airport.

RECOMMENDATION:

Based on this submittal, and testimony and facts presented, the HDOT recommends the Director of Transportation finds that approving the issuance of a month-to-month revocable permit to Hawaiian Airlines, including its conditions and rent, will serve the best interests of the State.

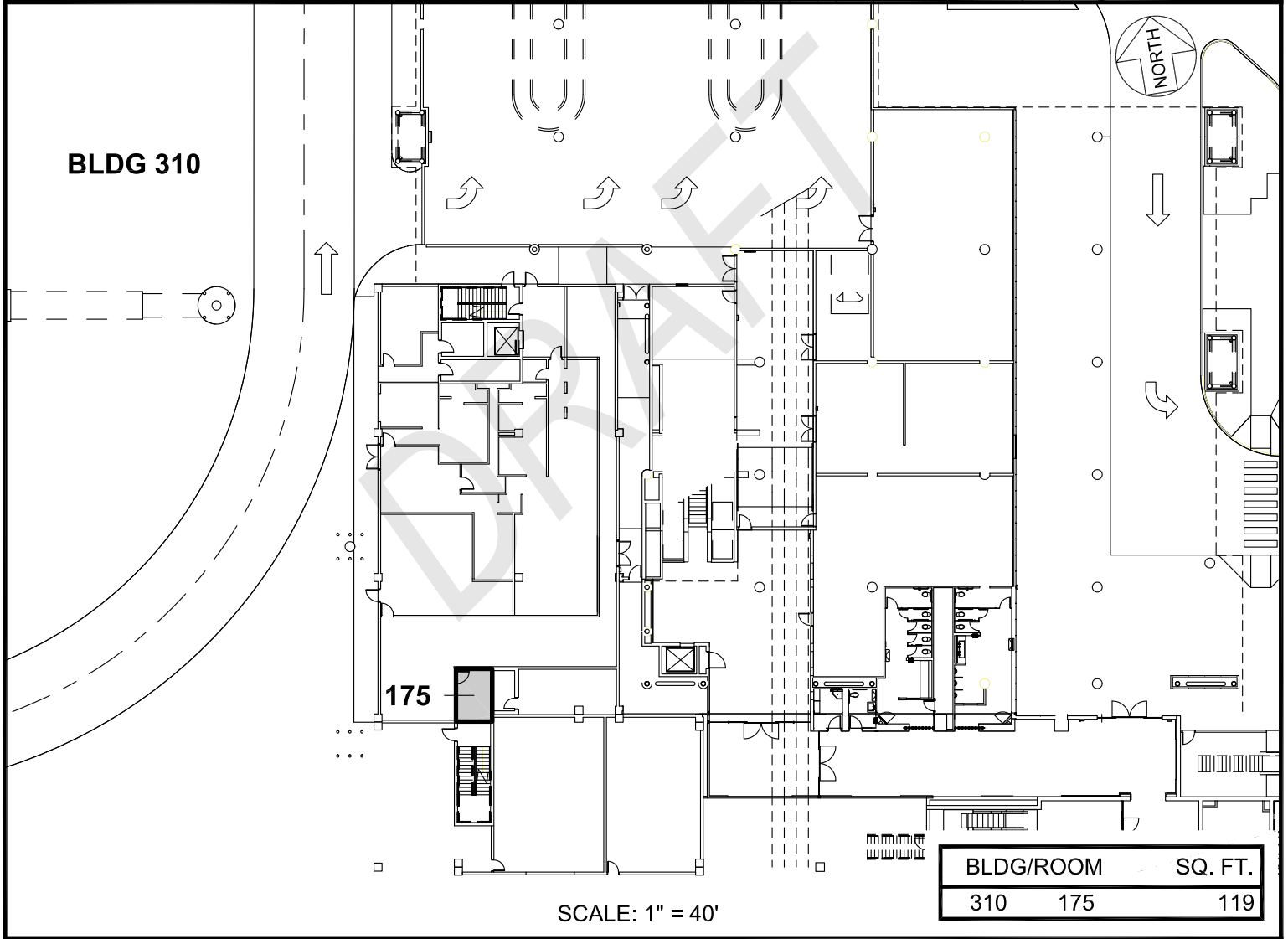
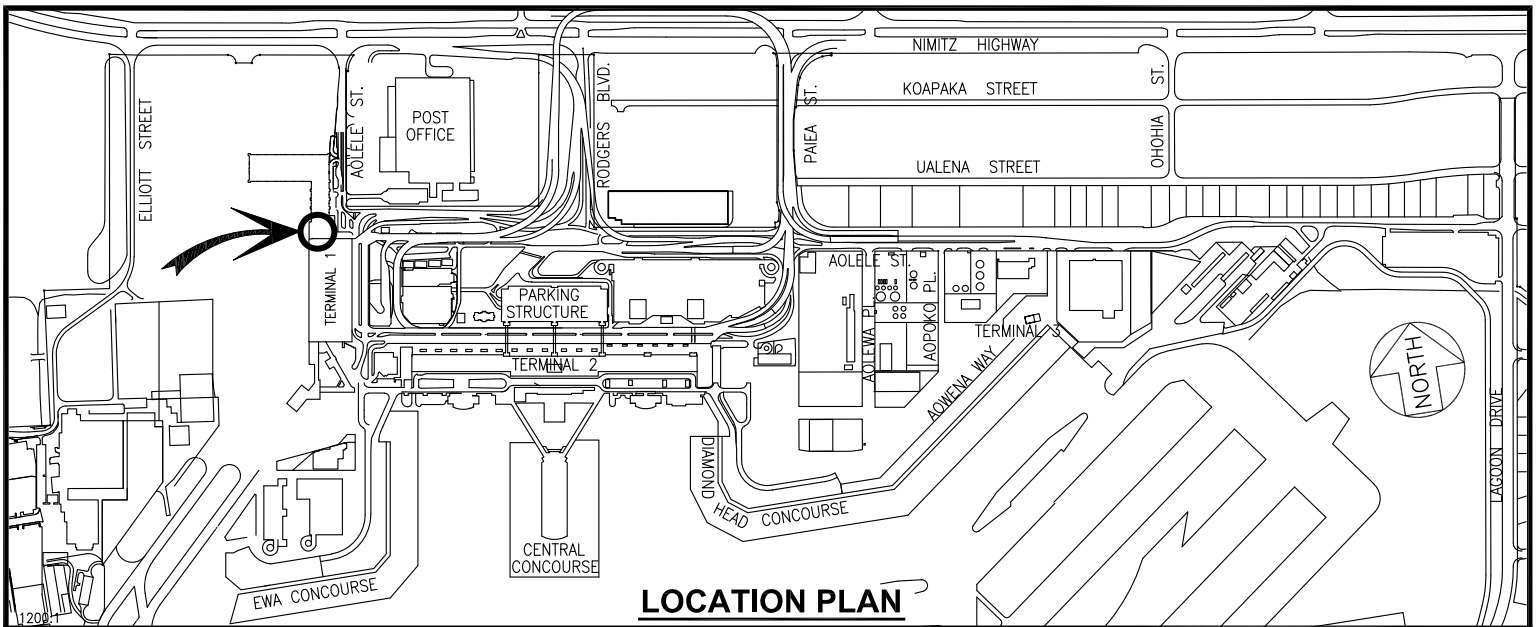
Respectfully submitted,



CURT T. OTAGURO

Deputy Director of Transportation for Airports

Attachment



RP-9706

DATE : MARCH 2025

EXHIBIT: **A**



AIRPORTS

HAWAIIAN AIRLINES, INC.

**BUILDING 310
TERMINAL 1
GROUND LEVEL**

310175

DANIEL K. INOUE INTERNATIONAL AIRPORT

N:\AIRPORTS\HNL_HONOLULU\CAD\PM\HNL_310175-01.DWG