

JOSH GREEN, M.D.
GOVERNOR
KE KIA'ĀINA



STATE OF HAWAII | KA MOKU'ĀINA 'O HAWAII'
DEPARTMENT OF TRANSPORTATION | KA 'OIHANA ALAKAU
AIRPORTS
400 RODGERS BOULEVARD, SUITE 700
HONOLULU, HAWAII 96819-1880

EDWIN H. SNIFFEN
DIRECTOR
KA LUNA HO'OKELE

Deputy Directors
Nā Hope Luna Ho'okele
DREANALEE K. KALILI
TAMMY L. LEE
CURT T. OTAGURO
ROBIN K. SHISHIDO

IN REPLY REFER TO:

AIR-PM 25.0793

September 25, 2025

DOT Land Matters
State of Hawaii
Honolulu, Hawaii

ISSUANCE OF A REVOCABLE PERMIT FOR THREE STORAGE
CONTAINERS FOR AIR AMBULANCE OPERATIONS
LIFE FLIGHT NETWORK, LLC
ELLISON ONIZUKA KONA INTERNATIONAL AIRPORT AT KEAHOLE
TAX MAP KEY: (3) 7-3-043: PORTION OF 003

HAWAII

APPLICANT:

Life Flight Network, LLC (LFN), whose mailing address is
22285 Yellow Gate Lane, Suite 102, Aurora, Oregon 97002.

LEGAL REFERENCE:

Hawaii Revised Statutes (HRS), Sections 26-19 and 171-2, as amended.

LOCATION AND TAX MAP KEY:

Portion of Ellison Onizuka Kona International Airport at Keahole (KOA), Kailua-Kona,
Island of Hawaii, identified by Tax Map Key: 3rd Division, 7-3-043: Portion of 003.

AREAS:

Area/Space No. 630-191, containing an area of approximately 160 square feet,
Area/Space No. 630-192, containing an area of approximately 160 square feet, and
Area/Space No. 630-193, containing an area of approximately 320 square feet, as shown
and delineated on the attached Exhibit A.

ZONING:

State Land Use District:	Urban & Conservation
County of Hawaii:	Industrial (MG-1a) and Open

ISSUANCE OF A REVOCABLE PERMIT FOR THREE STORAGE CONTAINERS FOR AIR
AMBULANCE OPERATIONS, LIFE FLIGHT NETWORK, LLC

Page 2

LAND TITLE STATUS:

Section 5(a) lands of the Hawaii Admission Act: Ceded

DHHL 30% entitlement lands pursuant to Hawaii Admission Act YES___ NO X

CURRENT USE STATUS:

Land presently encumbered by Governors Executive Order No. 3074,
dated August 20, 1981, setting aside 4,204.10 acres designated as KOA under the control
and management of the State of Hawaii Department of Transportation (HDOT) for Airport
purposes.

CHARACTER OF USE:

LFN will use the containers for the storage of aircraft maintenance materials and tooling
as part of its air ambulance operation.

COMMENCEMENT DATE:

To be determined by the Director of Transportation at a later date.

MONTHLY RENTAL:

\$275.20 (based on a rate of \$5.16 per square foot per annum, as determined from the
HDOT Schedule of Rates and Charges established by appraisal of Airports property
statewide).

SECURITY DEPOSIT:

\$825.60, or three times the monthly rental in effect.

DCCA VERIFICATION:

Place of business registration confirmed:	YES <u>X</u>	NO ___
Registered business name confirmed:	YES <u>X</u>	NO ___
Good standing confirmed:	YES <u>X</u>	NO ___

CHAPTER 343, HRS - ENVIRONMENTAL ASSESSMENT:

The HDOT has determined the subject land areas are covered by the Final Environmental
Assessment (EA)/Finding of No Significant Impact, Airfield, Terminal, and Facility

ISSUANCE OF A REVOCABLE PERMIT FOR THREE STORAGE CONTAINERS FOR AIR
AMBULANCE OPERATIONS, LIFE FLIGHT NETWORK, LLC

Page 3

Improvements for the KOA, published by the Office of Environmental Quality Control in the March 23, 2013, issue of The Environmental Notice. Accordingly, all relevant mitigation from the EA and best management practices will be implemented to address the minimum impacts of this action.

REMARKS:

HDOT proposes to issue a month-to-month revocable permit to LFN for three sprung structure containers for the storage of aircraft maintenance materials and tooling as part of its air ambulance operation.

RECOMMENDATION:

Based on this submittal, and testimony and facts presented, the HDOT recommends the Director of Transportation finds that approving the issuance of a month-to-month revocable permit to LFN, including its conditions and rent, will serve the best interests of the State.

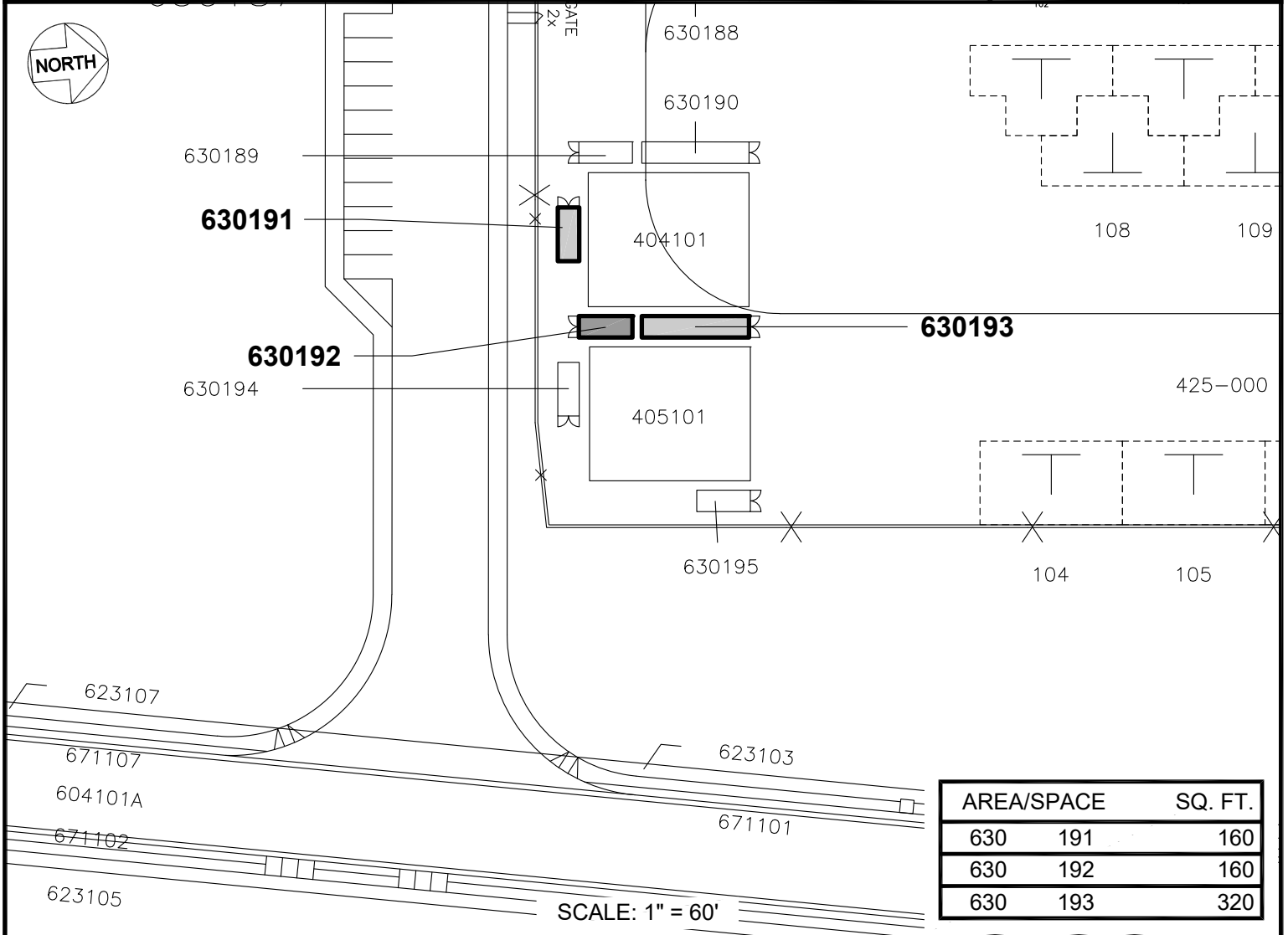
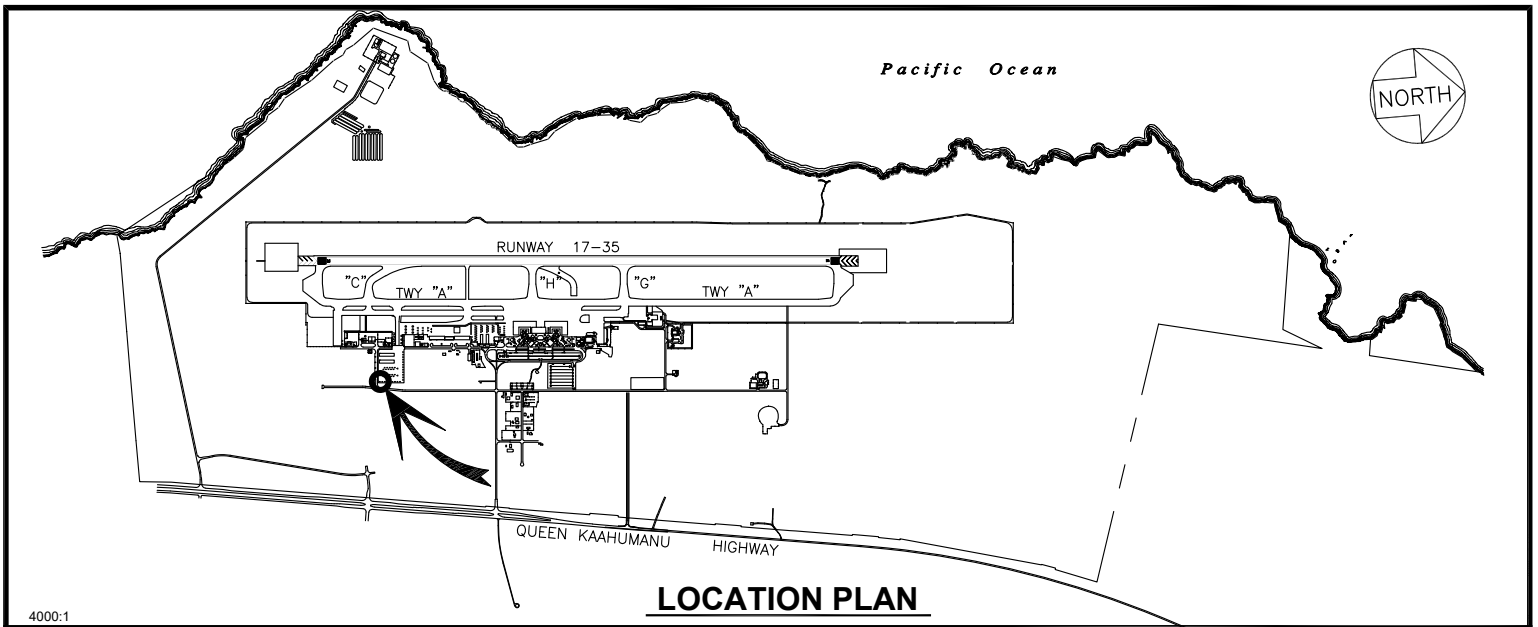
Respectfully submitted,



CURT T. OTAGURO

Deputy Director of Transportation for Airports

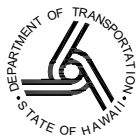
Attachment



RP-9728

DATE : AUGUST 2025

EXHIBIT: **A**



AIRPORTS

LIFE FLIGHT NETWORK,
LLC

CONTAINERS

630191
630192
630193

ELLISON ONIZUKA KONA INTERNATIONAL AIRPORT AT KEAHOLE

N:\AIRPORTS\KOA_KONA\CAD\PIKOA_630191-01.DWG