

JOSH GREEN, M.D.
GOVERNOR
KE KIA'ĀINA



STATE OF HAWAII | KA MOKU'ĀINA 'O HAWAI'I
DEPARTMENT OF TRANSPORTATION | KA 'OIHANA ALAKAU
AIRPORTS
400 RODGERS BOULEVARD, SUITE 700
HONOLULU, HAWAII 96819-1880

EDWIN H. SNIFFEN
DIRECTOR
KA LUNA HO'OKELE

Deputy Directors
Nā Hope Luna Ho'okele
DREANALEE K. KALILI
TAMMY L. LEE
CURT T. OTAGURO
ROBIN K. SHISHIDO

IN REPLY REFER TO:

AIR-PM 25.0762

September 11, 2025

DOT Land Matters
State of Hawaii
Honolulu, Hawaii

ISSUANCE OF A REVOCABLE PERMIT FOR AIRCRAFT PARKING
LIFE FLIGHT NETWORK, LLC
HILO INTERNATIONAL AIRPORT
TAX MAP KEY: (3) 2-1-012: PORTION OF 009

HAWAII

REQUEST:

Issuance of a Revocable Permit for Aircraft Parking (Parking Permit) to
Life Flight Network, LLC (LFN), situated at Hilo International Airport at Hilo, Hawaii.

APPLICANT:

LFN, whose mailing address is 22285 Yellow Gate Lane, Suite 102, Aurora, Oregon 97002.

LEGAL REFERENCE:

Hawaii Revised Statutes (HRS), Sections 26-19 and 171-2, as amended.

LOCATION AND TAX MAP KEY:

Portion of Hilo International Airport (ITO), Hilo, Island of Hawaii,
identified by Tax Map Key: 3rd Division, 2-1-012: Portion of 009.

AREA:

Area/Space No. 412-108, containing an area of approximately 990 square feet,
as shown and delineated on the attached map labeled Exhibit A.

ZONING:

State Land Use District:
County of Hawaii:

Urban
Industrial (ML-20)

ISSUANCE OF A REVOCABLE PERMIT FOR AIRCRAFT PARKING
LIFE FLIGHT NETWORK, LLC
Page 2

LAND TITLE STATUS:

Section 5(a) lands of the Hawaii Admission Act: Ceded
DHHL 30% entitlement lands pursuant to Hawaii Admission Act YES___ NO X

CURRENT USE STATUS:

Land presently encumbered by Governor's Executive Order No. 1519, dated July 17, 1952, setting aside 550.881 acres being a portion of General Lyman Field under the control and management of the Hawaii Aeronautics Commission [subsequently transferred to the State of Hawaii Department of Transportation (HDOT)] as a site for the Hilo Airport, now known as ITO.

CHARACTER OF USE:

Aircraft (2014 Pilatus LTD PC-12/47E, N-661LF) tie-down.

COMMENCEMENT DATE:

To be determined by the Director of Transportation at a later date.

MONTHLY RENTAL:

\$130.00 (as determined from the HDOT Schedule of Rates and Charges established by appraisal of Airports property statewide).

SECURITY DEPOSIT:

\$390.00, or three times the monthly rental in effect.

DCCA VERIFICATION:

Place of business registration confirmed:	YES <u>X</u>	NO _____
Registered business name confirmed:	YES <u>X</u>	NO _____
Good standing confirmed:	YES <u>X</u>	NO _____

CHAPTER 343, HRS - ENVIRONMENTAL ASSESSMENT:

The HDOT has determined that the subject areas are covered by the Hilo International Airport Final Environmental Assessment (FEA), dated April 15, 2003, and published by the Office of Environmental Quality Control in the May 8, 2003 issue of The Environmental Notice. Accordingly, all relevant mitigation from the FEA and best management practices will be implemented to address the minimum impacts of this action.

ISSUANCE OF A REVOCABLE PERMIT FOR AIRCRAFT PARKING
LIFE FLIGHT NETWORK, LLC

Page 3

REMARKS:

HDOT proposes to issue a month-to-month Parking Permit to LFN for aircraft parking at ITO.

RECOMMENDATION:

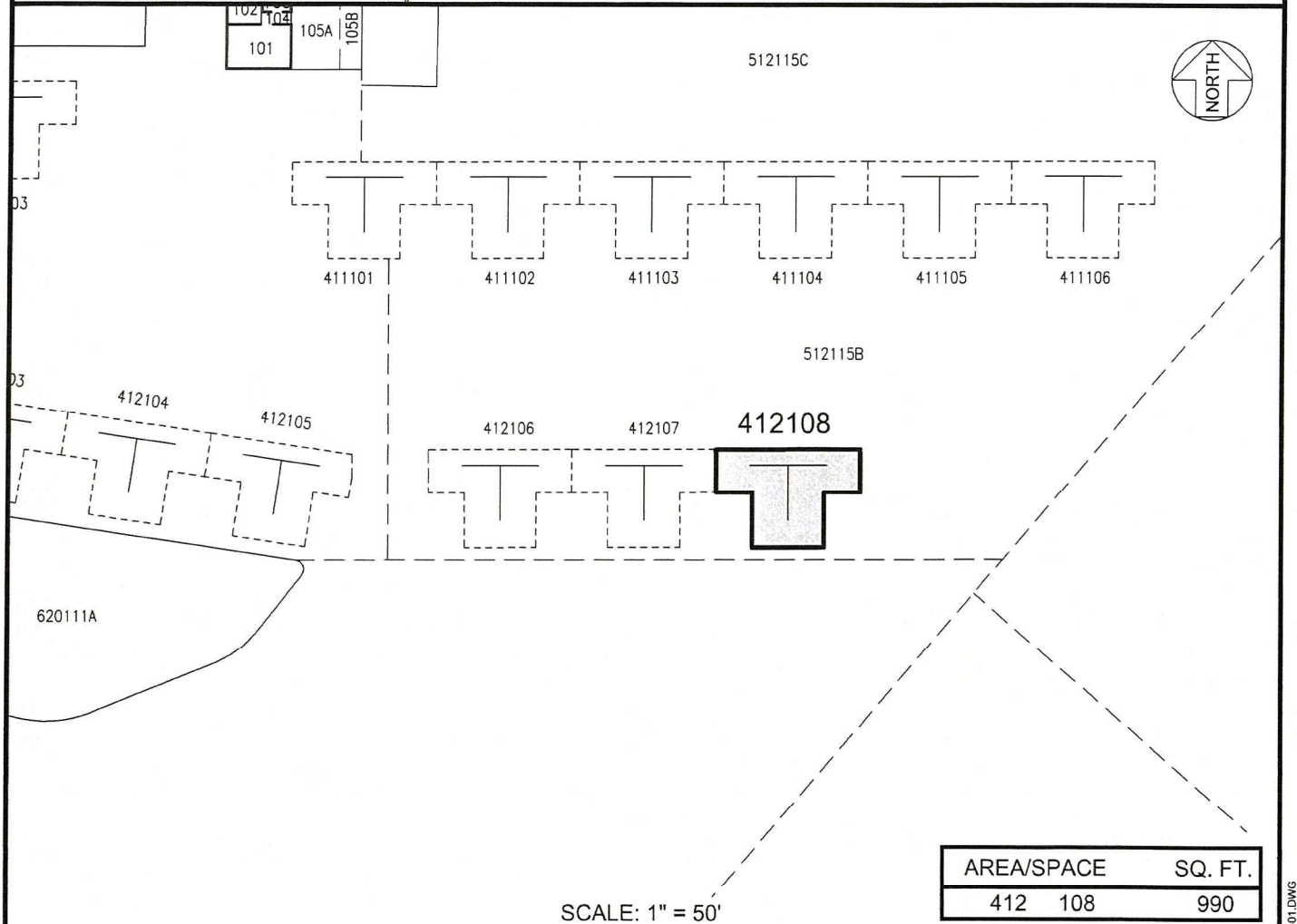
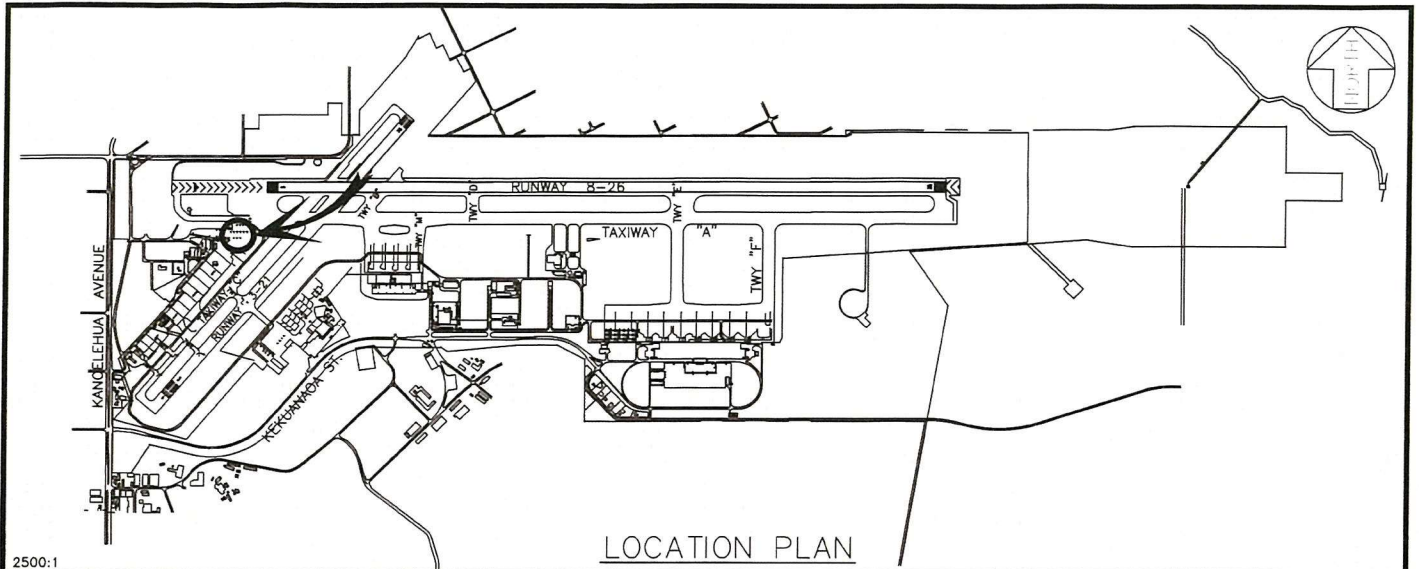
Based on this submittal, and testimony and facts presented, the HDOT recommends the Director of Transportation finds that approving the issuance of a month-to-month Parking Permit to LFN, including its conditions and rent, will serve the best interests of the State.

Respectfully submitted,



CURT T. OTAGURO
Deputy Director of Transportation for Airports

Attachment



PP-25-S305

DATE : JUNE 2025

EXHIBIT: **A**



AIRPORTS

LIFE FLIGHT NETWORK, LLC

TIE-DOWN

412108

HILO INTERNATIONAL AIRPORT

C:\USERS\HALL\DESKTOP\412108-01.DWG