



STATE OF HAWAII | KA MOKU'ĀINA 'O HAWAII
DEPARTMENT OF TRANSPORTATION | KA 'OIHANA ALAKAU
AIRPORTS
400 RODGERS BOULEVARD, SUITE 700
HONOLULU, HAWAII 96813-5097

IN REPLY REFER TO:

AIR-PM 25.0880

October 23, 2025

DOT Land Matters
State of Hawaii
Honolulu, Hawaii

ISSUANCE OF A REVOCABLE PERMIT FOR A CARGO WAREHOUSE AND
IMPROVED, PAVED LAND FOR OFFICES AND WAREHOUSE SPACE, CONEX
CONTAINER STORAGE, VEHICLE AND CONSTRUCTION EQUIPMENT
PARKING, AND CONSTRUCTION LAYDOWN SPACE
HAWAII FUELING FACILITIES CORPORATION
DANIEL K. INOUE INTERNATIONAL AIRPORT
TAX MAP KEY: (1) 1-1-003:015 (PORTION) AND (1) 1-1-003: 017 (PORTION)

OAHU

APPLICANT:

Hawaii Fueling Facilities Corporation (HFFC), whose mailing address is
3201 Aolele Street, Honolulu, Hawaii 96819.

LEGAL REFERENCE:

Hawaii Revised Statutes (HRS), Sections 26-19 and 171-2, as amended.

LOCATION AND TAX MAP KEY:

Portion of Building 132, Ground and Second Level of the Building, loading docks
and parking lot. A portion of 3255 Aolele Street, at Daniel K. Inouye International
Airport (Airport), Island of Oahu, State of Hawaii, identified by Tax Map Key: 1st
Division, 1-1-003:015 (Portion) and 1st Division, 1-1-003: 017 (Portion).

AREA:

Area/Space No. 001-122F, containing an area of approximately 16,911 square feet;
Area/Space Nos. 614-106A, 614-106B, and 614-106C, each containing an area of
approximately 443 square feet; and Area/Space No. 614-106D, containing an area of
approximately 437 square feet;

ISSUANCE OF A REVOCABLE PERMIT FOR A CARGO WAREHOUSE AND IMPROVED,
PAVED LAND FOR OFFICES AND WAREHOUSE SPACE, CONEX CONTAINER
STORAGE, VEHICLE AND CONSTRUCTION EQUIPMENT PARKING, AND
CONSTRUCTION LAYDOWN SPACE, HAWAII FUELING FACILITIES CORPORATION
Page 2

Building/Room No. 132-103A, containing an area of approximately 3,534 square feet;
Building/Room No. 132-103B, containing an area of approximately 2,746 square feet;
Building/Room No. 132-106, containing an area of approximately 1,399 square feet;
Building/Room No. 132-109, containing an area of approximately 266 square feet;
Building/Room No. 132-112, containing an area of approximately 369 square feet; and
Building/Room No. 132-113, containing an area of approximately 127 square feet; as
shown and delineated on the attached map labeled Exhibit A.

Building/Room No. 132-201, containing an area of approximately 523 square feet; and
Building/Room No. 132-202, containing an area of approximately 1,387 square feet; as
shown and delineated on the attached map labeled Exhibit B.

Area/Space No. 001-101C, containing an area of approximately 33,040 square feet, as
shown and delineated on the attached map labeled Exhibit C.

ZONING:

State Land Use District: Urban
City and County of Honolulu LUO: Industrial (I-2)

LAND TITLE STATUS:

Non-ceded - Section 5(a) lands of the Hawaii Admission Act
DHHL 30% entitlement lands pursuant to Hawaii Admission Act YES ____ NO X

CURRENT USE STATUS:

Land presently encumbered by Governor's Executive Order No. 3201, dated June 8, 1983,
setting aside 3,152.177 acres designated as Daniel K. Inouye International Airport under
the control and management of the State of Hawaii Department of Transportation (HDOT)
for Airport purposes.

CHARACTER OF USE:

HFFC will use the building and improved, paved land for office and warehouse space,
conex container storage, vehicle and construction equipment parking, and construction
laydown space, at the Airport.

COMMENCEMENT DATE:

Upon execution of the revocable permit.

ISSUANCE OF A REVOCABLE PERMIT FOR A CARGO WAREHOUSE AND IMPROVED, PAVED LAND FOR OFFICES AND WAREHOUSE SPACE, CONEX CONTAINER STORAGE, VEHICLE AND CONSTRUCTION EQUIPMENT PARKING, AND CONSTRUCTION LAYDOWN SPACE, HAWAII FUELING FACILITIES CORPORATION
Page 3

MONTHLY RENTAL:

\$41,586.61 per month, as determined from the HDOT Schedule of Rates and Charges established by appraisal of Airports properties statewide.

SECURITY DEPOSIT:

\$124,759.83, or three times the monthly rental in effect.

DCCA VERIFICATION:

Place of business registration confirmed:	YES <u>X</u>	NO <u> </u>
Registered business name confirmed:	YES <u>X</u>	NO <u> </u>
Good standing confirmed:	YES <u>X</u>	NO <u> </u>

CHAPTER 343, HRS - ENVIRONMENTAL ASSESSMENT:

The environmental impacts of the proposed action to the subject land area are covered by the Honolulu International Airport, Airport Modernization Program Environmental Assessment (EA), State Project No. AO1030-13. The EA is a joint State and Federal document dated January 2013, and published in the February 8, 2013 issue of the OEQC Bulletin. Accordingly, the actions have been determined to have little or no impact upon the environment.

REMARKS:

HDOT proposes to issue a revocable permit to HFFC for a cargo warehouse and improved, paved land for office and warehouse space, conex container storage, vehicle and construction equipment parking, and construction laydown space, situated at the Airport.

RECOMMENDATION:

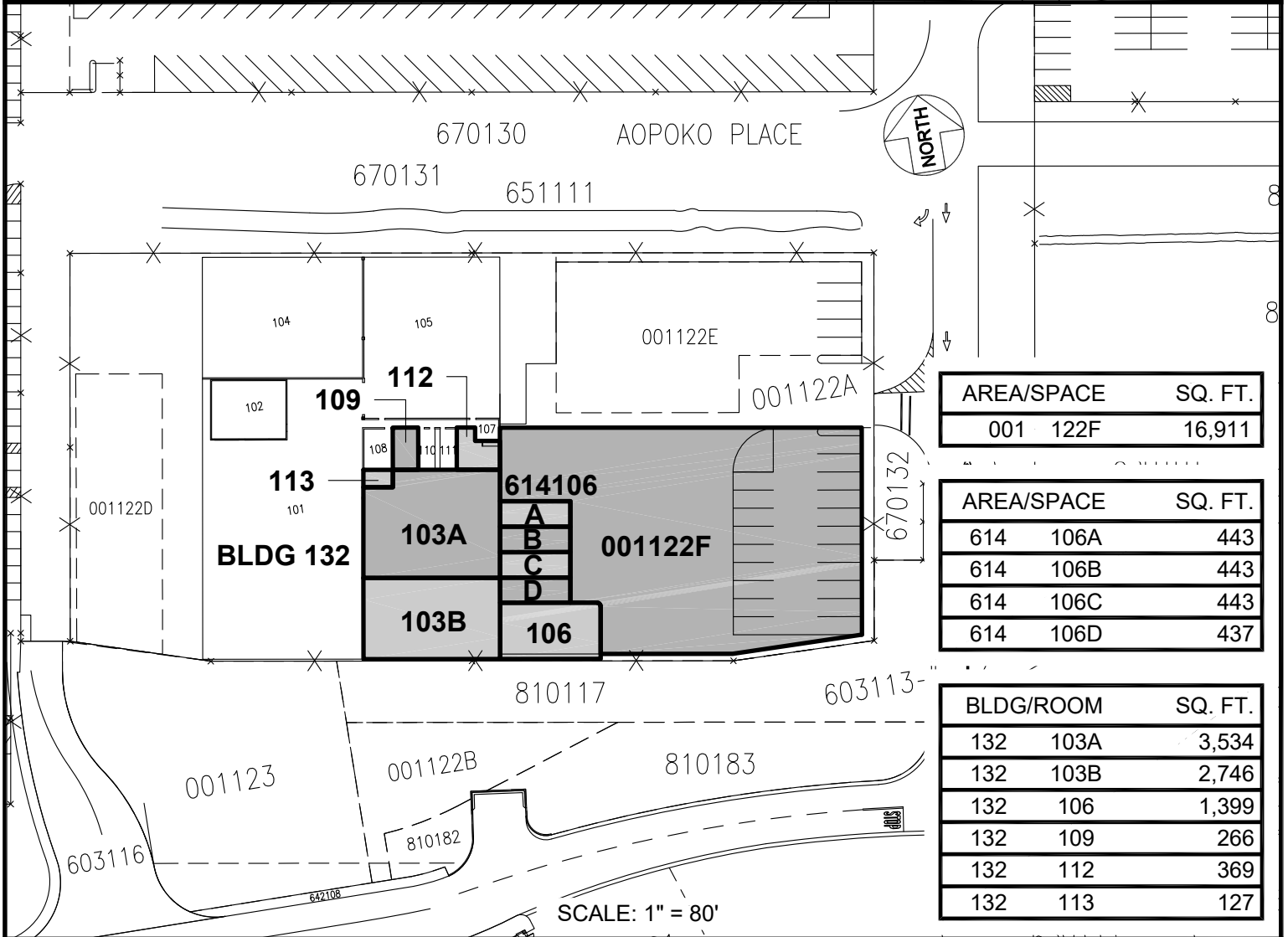
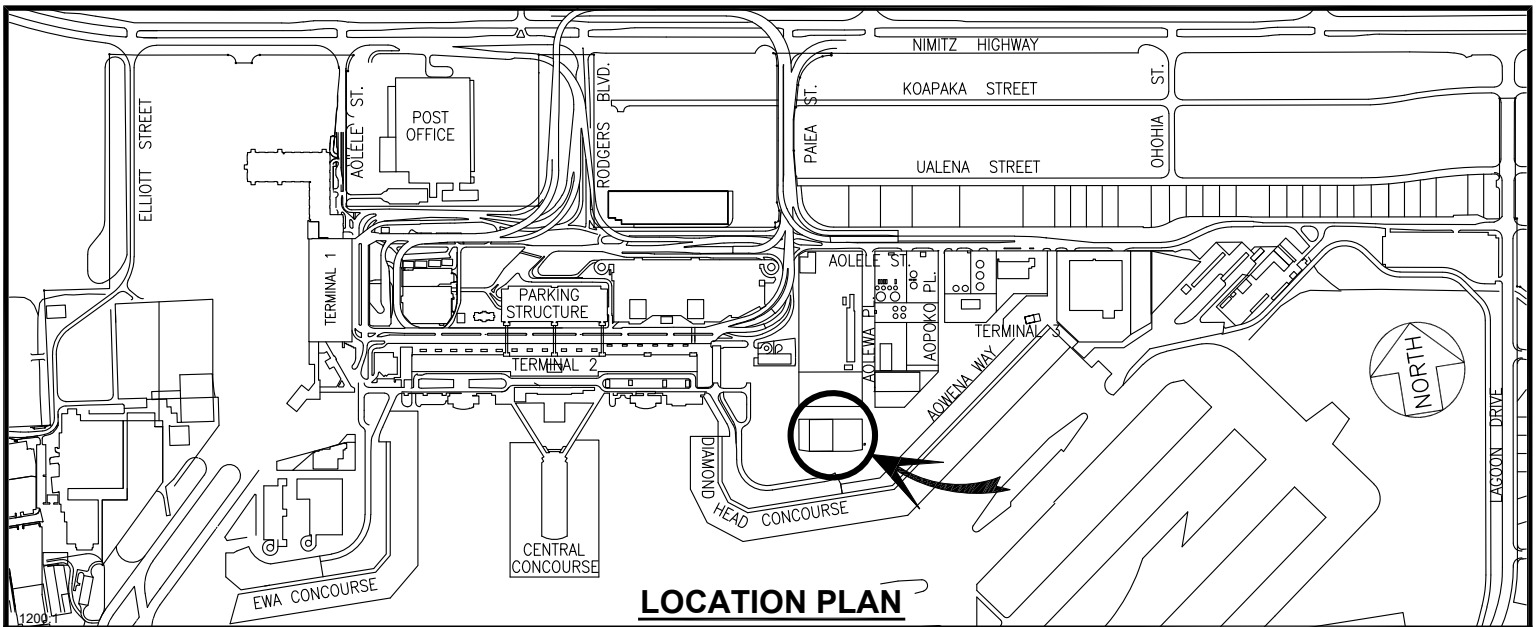
Based on this submittal, and testimony and facts presented, the HDOT recommends the Director of Transportation finds that approving the issuance of a month-to-month revocable permit to HFFC, including its conditions and rent, will serve the best interests of the State.

Respectfully submitted,



CURT T. OTAGURO
Deputy Director of Transportation for Airports

Attachments



AREA/SPACE	SQ. FT.
001 122F	16,911

AREA/SPACE	SQ. FT.
614 106A	443
614 106B	443
614 106C	443
614 106D	437

BLDG/ROOM	SQ. FT.
132 103A	3,534
132 103B	2,746
132 106	1,399
132 109	266
132 112	369
132 113	127

RP-9737

DATE : SEPTEMBER 2025

EXHIBIT: **A**



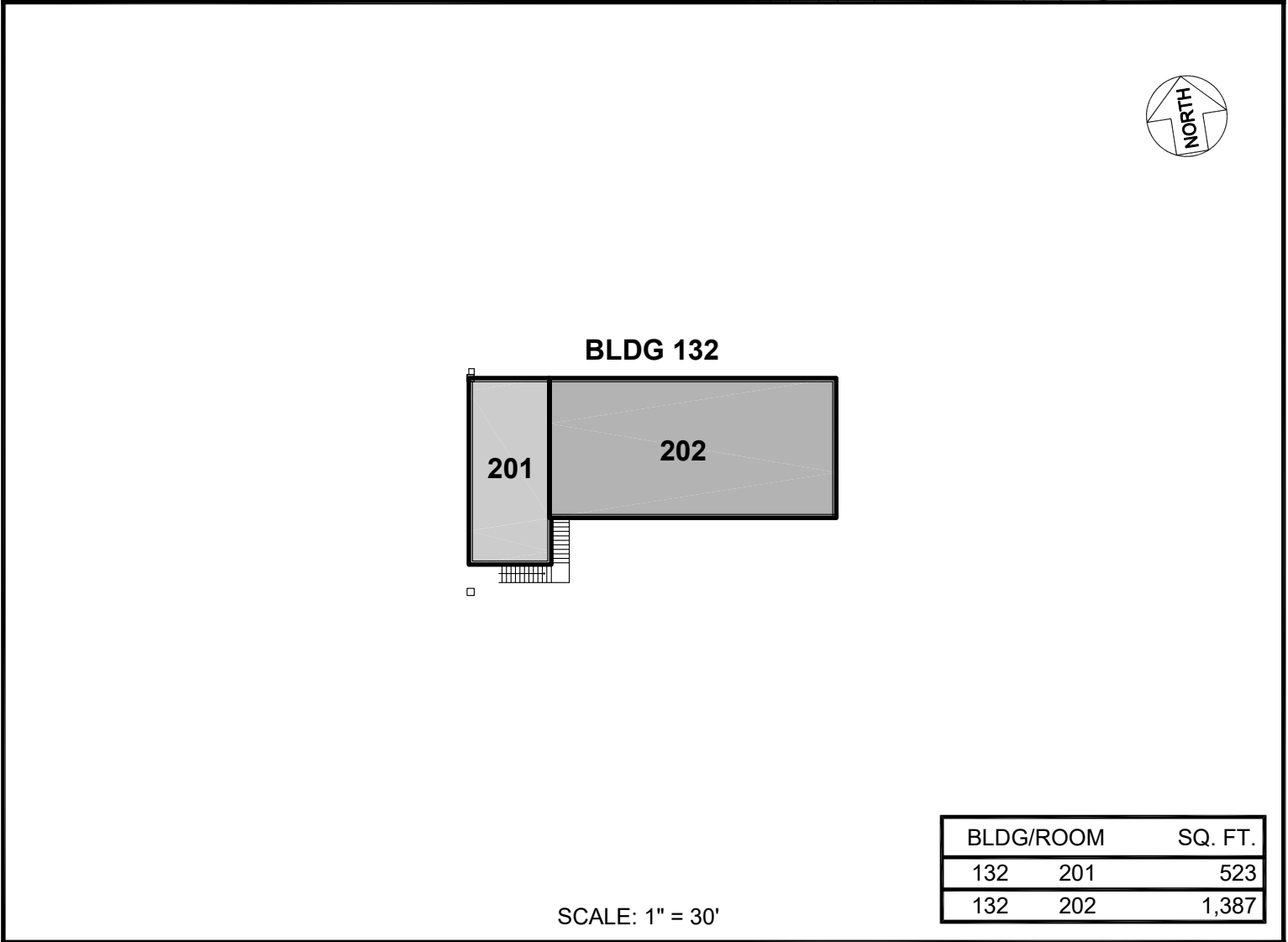
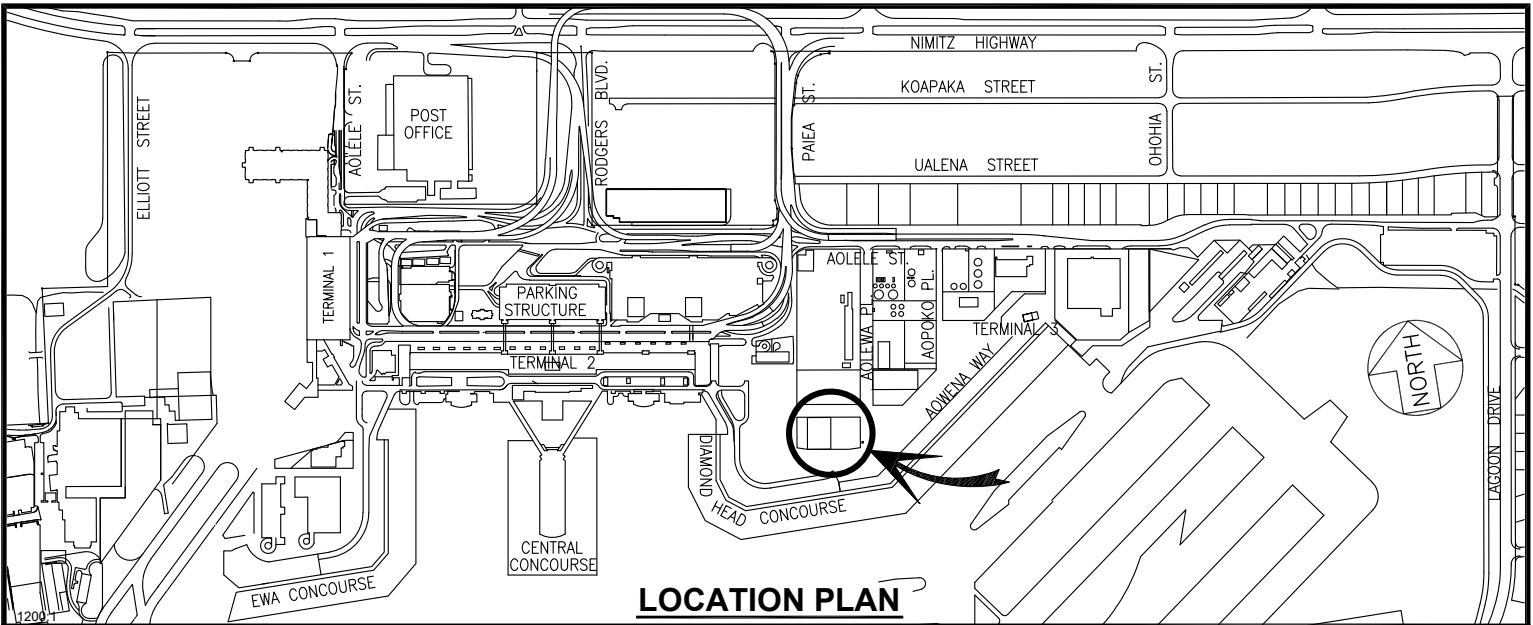
AIRPORTS


**HAWAII FUELING
FACILITIES CORPORATION**

**BUILDING 132
LOTS / PARKING**

**001122F
614106A-D
132103A-B
132106-113**

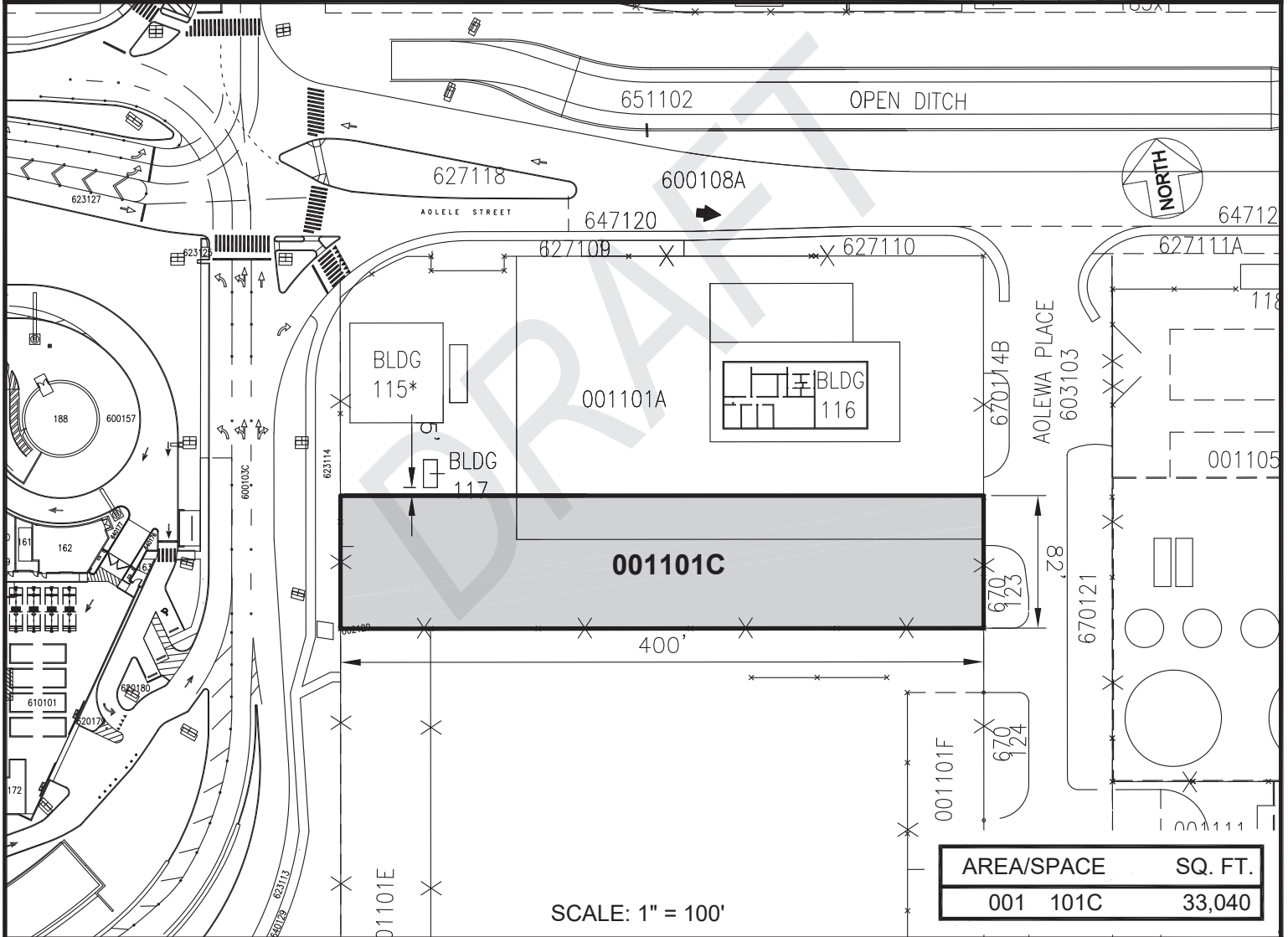
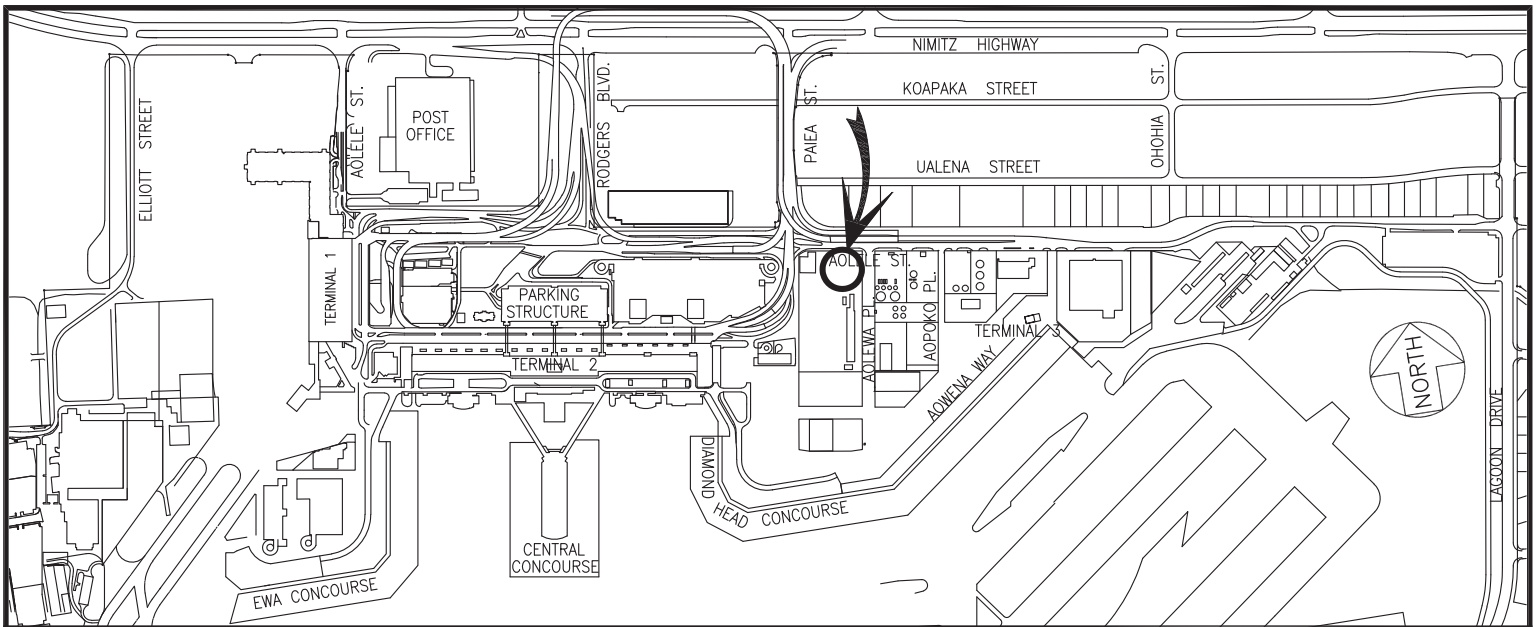
DANIEL K. INOUE INTERNATIONAL AIRPORT



RP-9737	DATE : SEPTEMBER 2025	EXHIBIT: B	
 AIRPORTS	HAWAII FUELING FACILITIES CORPORATION	BUILDING 132 SECOND LEVEL	132201 132202

DANIEL K. INOUE INTERNATIONAL AIRPORT

N:\AIRPORTS\HNL_HONOLULU\CAD\PM\HNL_132201-01.DWG



RP-9737

DATE : OCTOBER 2025

EXHIBIT: C



AIRPORTS

HAWAII FUELING
FACILITIES CORPORATION

LOT, OVERSEAS
MAINTENANCE AREA

001101C

DANIEL K. INOUE INTERNATIONAL AIRPORT

N:\AIRPORTS\HNL_HONOLULU\CAD\PM\HNL_001101C-01.DWG