



**STATE OF HAWAII | KA MOKU'ĀINA 'O HAWAI'I  
DEPARTMENT OF TRANSPORTATION | KA 'OIHANA ALAKAU  
AIRPORTS**

400 RODGERS BOULEVARD, SUITE 700  
HONOLULU, HAWAII 96819-1880

**AIR-PM 25.0793**

October 23, 2025

DOT Land Matters  
State of Hawaii  
Honolulu, Hawaii

ISSUANCE OF A REVOCABLE PERMIT FOR THREE STORAGE  
CONTAINERS FOR AIR AMBULANCE OPERATIONS  
LIFE FLIGHT NETWORK, LLC  
ELLISON ONIZUKA KONA INTERNATIONAL AIRPORT AT KEAHOLE  
TAX MAP KEY: (3) 7-3-043: PORTION OF 003

**HAWAII**

**APPLICANT:**

Life Flight Network, LLC (LFN), whose mailing address is  
22285 Yellow Gate Lane, Suite 102, Aurora, Oregon 97002.

**LEGAL REFERENCE:**

Hawaii Revised Statutes (HRS), Sections 26-19 and 171-2, as amended.

**LOCATION AND TAX MAP KEY:**

Portion of Ellison Onizuka Kona International Airport at Keahole (KOA), Kailua-Kona,  
Island of Hawaii, identified by Tax Map Key: 3<sup>rd</sup> Division, 7-3-043: Portion of 003.

**AREAS:**

Area/Space No. 630-191, containing an area of approximately 160 square feet,  
Area/Space No. 630-192, containing an area of approximately 160 square feet, and  
Area/Space No. 630-193, containing an area of approximately 320 square feet, as shown  
and delineated on the attached Exhibit A.

**ZONING:**

State Land Use District:	Urban & Conservation
County of Hawaii:	Industrial (MG-1a) and Open

ISSUANCE OF A REVOCABLE PERMIT FOR THREE STORAGE CONTAINERS FOR AIR  
AMBULANCE OPERATIONS, LIFE FLIGHT NETWORK, LLC

Page 2

LAND TITLE STATUS:

Section 5(a) lands of the Hawaii Admission Act: Ceded

DHHL 30% entitlement lands pursuant to Hawaii Admission Act YES\_\_\_ NO X

CURRENT USE STATUS:

Land presently encumbered by Governors Executive Order No. 3074,  
dated August 20, 1981, setting aside 4,204.10 acres designated as KOA under the control  
and management of the State of Hawaii Department of Transportation (HDOT) for Airport  
purposes.

CHARACTER OF USE:

LFN will use the containers for the storage of aircraft maintenance materials and tooling  
as part of its air ambulance operation.

COMMENCEMENT DATE:

To be determined by the Director of Transportation at a later date.

MONTHLY RENTAL:

\$275.20 (based on a rate of \$5.16 per square foot per annum, as determined from the  
HDOT Schedule of Rates and Charges established by appraisal of Airports property  
statewide).

SECURITY DEPOSIT:

\$825.60, or three times the monthly rental in effect.

DCCA VERIFICATION:

Place of business registration confirmed:	YES <u>X</u>	NO ___
Registered business name confirmed:	YES <u>X</u>	NO ___
Good standing confirmed:	YES <u>X</u>	NO ___

CHAPTER 343, HRS - ENVIRONMENTAL ASSESSMENT:

The HDOT has determined the subject land areas are covered by the Final Environmental  
Assessment (EA)/Finding of No Significant Impact, Airfield, Terminal, and Facility

ISSUANCE OF A REVOCABLE PERMIT FOR THREE STORAGE CONTAINERS FOR AIR  
AMBULANCE OPERATIONS, LIFE FLIGHT NETWORK, LLC

Page 3

Improvements for the KOA, published by the Office of Environmental Quality Control in the March 23, 2013, issue of The Environmental Notice. Accordingly, all relevant mitigation from the EA and best management practices will be implemented to address the minimum impacts of this action.

REMARKS:

HDOT proposes to issue a month-to-month revocable permit to LFN for three sprung structure containers for the storage of aircraft maintenance materials and tooling as part of its air ambulance operation.

RECOMMENDATION:

Based on this submittal, and testimony and facts presented, the HDOT recommends the Director of Transportation finds that approving the issuance of a month-to-month revocable permit to LFN, including its conditions and rent, will serve the best interests of the State.

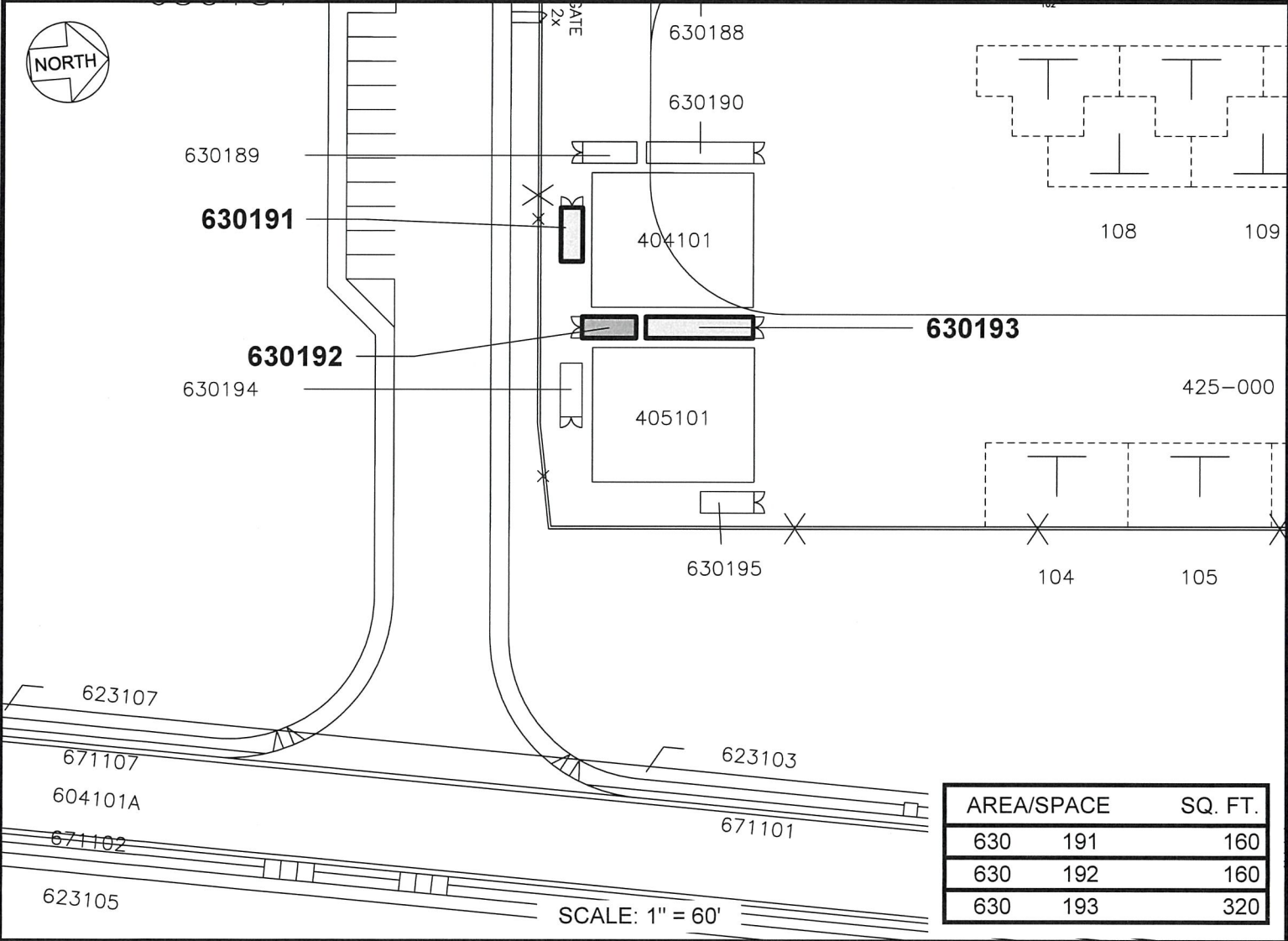
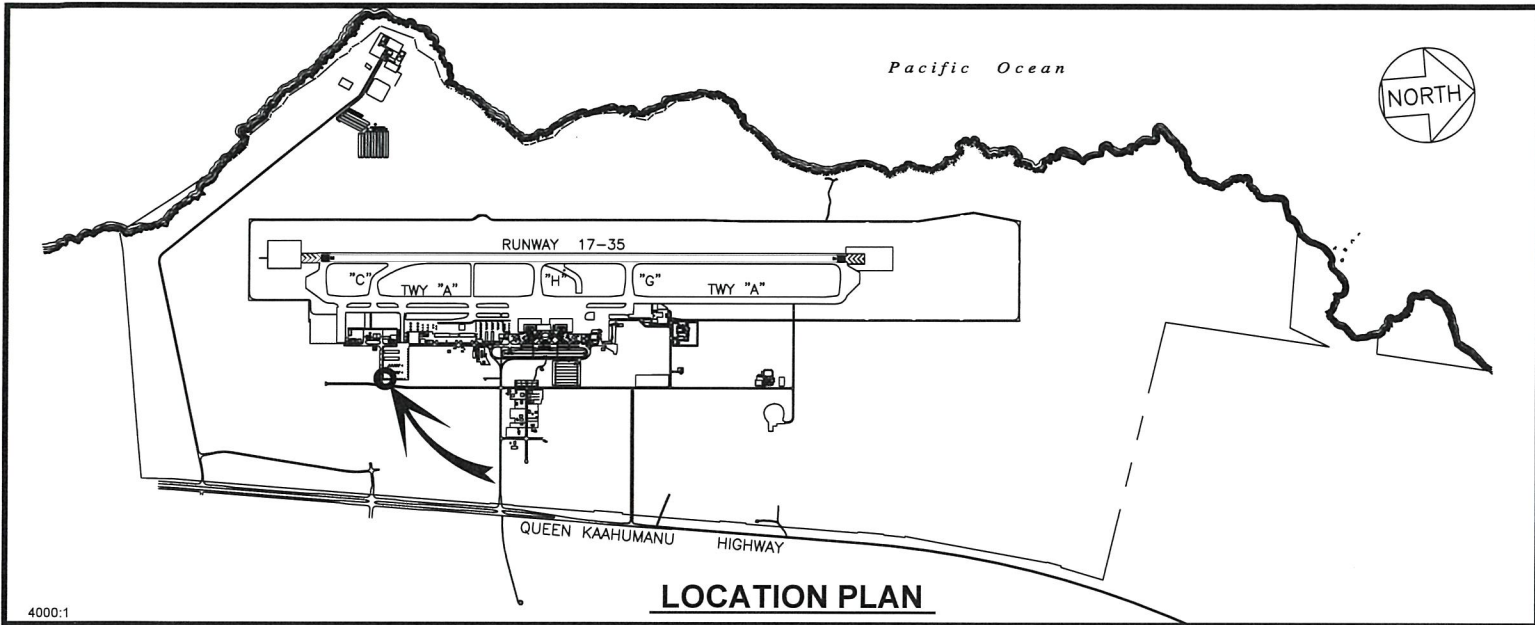
Respectfully submitted,



CURT T. OTAGURO

Deputy Director of Transportation for Airports

Attachment



RP-9728		DATE : AUGUST 2025		EXHIBIT: <b>A</b>	
	AIRPORTS	LIFE FLIGHT NETWORK, LLC	CONTAINERS	630191	
				630192	
				630193	

ELLISON ONIZUKA KONA INTERNATIONAL AIRPORT AT KEAHOLE

N:\AIRPORTS\KOA\_KONACAD\PMKOA\_630191-01.DWG