

JOSH GREEN, M.D.  
GOVERNOR  
KE KIA'ĀINA



EDWIN H. SNIFFEN  
DIRECTOR  
KA LUNA HO'OKELE

Deputy Directors  
Nā Hope Luna Ho'okele  
DREANALEE K. KALILI  
TAMMY L. LEE  
CURT T. OTAGURO  
ROBIN K. SHISHIDO

**STATE OF HAWAI'I | KA MOKU'ĀINA 'O HAWAI'I**  
**DEPARTMENT OF TRANSPORTATION | KA 'OIHANA ALAKAU**  
**AIRPORTS**  
400 RODGERS BOULEVARD, SUITE 700  
HONOLULU, HAWAII 96819-1880

IN REPLY REFER TO:

**AIR-PM 26.0200**

April 9, 2026

DOT Land Matters  
State of Hawaii  
Honolulu, Hawaii

ISSUANCE OF A REVOCABLE PERMIT FOR MOBILE FUEL TRAILER  
PARKING TO SUPPORT ITS AIR AMBULANCE OPERATION  
LIFE FLIGHT NETWORK, LLC  
HILO INTERNATIONAL AIRPORT  
TAX MAP KEY: (3) 2-1-012: PORTION OF 161

HAWAII

APPLICANT:

Life Flight Network, LLC (LFN), whose mailing address is 22285 Yellow Gate Lane,  
Suite 102, Aurora, Oregon 97002.

LEGAL REFERENCE:

Hawaii Revised Statutes (HRS), Sections 26-19 and 171-2, as amended.

LOCATION AND TAX MAP KEY:

Portion of Hilo International Airport (ITO), Hilo, Island of Hawaii,  
identified by Tax Map Key: 3rd Division, 2-1-012: Portion of 161.

AREA:

Area/Space No. 800-147, containing an area of approximately 200 square feet, as shown  
and delineated on the attached map labeled Exhibit A.

ZONING:

State Land Use District:	Urban
County of Hawaii:	Industrial (ML-20)

ISSUANCE OF A REVOCABLE PERMIT FOR MOBILE FUEL TRAILER PARKING TO SUPPORT ITS AIR AMBULANCE OPERATION, LIFE FLIGHT NETWORK, LLC

Page 2

LAND TITLE STATUS:

Section 5(a) lands of the Hawaii Admission Act: Ceded

DHHL 30% entitlement lands pursuant to Hawaii Admission Act YES \_\_\_ NO X

CURRENT USE STATUS:

Land presently encumbered by Governor's Executive Order No. 1519, dated July 17, 1952, setting aside 550.881 acres being a portion of General Lyman Field under the control and management of the Hawaii Aeronautics Commission [subsequently transferred to the State of Hawaii Department of Transportation (HDOT)] as a site for the Hilo Airport, now known as ITO.

CHARACTER OF USE:

LFN will use the space for mobile fuel trailer parking to support its air ambulance operation at ITO.

COMMENCEMENT DATE:

Upon execution of the revocable permit.

MONTHLY RENTAL:

\$39.33 (as determined from the HDOT Schedule of Rates and Charges established by appraisal of Airports property statewide).

SECURITY DEPOSIT:

\$117.99, or three times the monthly rental in effect.

DCCA VERIFICATION:

Place of business registration confirmed: YES X NO \_\_\_  
Registered business name confirmed: YES X NO \_\_\_  
Good standing confirmed: YES X NO \_\_\_

CHAPTER 343, HRS - ENVIRONMENTAL ASSESSMENT:

The HDOT has determined that the subject areas are covered by the Hilo International Airport Final Environmental Assessment (FEA), dated April 15, 2003, and published by the Office of Environmental Quality Control in the May 8, 2003 issue of The Environmental Notice. Accordingly, all relevant mitigation from the FEA and best management practices will be implemented to address the minimum impacts of this action.

ISSUANCE OF A REVOCABLE PERMIT FOR MOBILE FUEL TRAILER PARKING TO  
SUPPORT ITS AIR AMBULANCE OPERATION, LIFE FLIGHT NETWORK, LLC

Page 3

REMARKS:

HDOT proposes to issue a month-to-month revocable permit to LFN for mobile fuel trailer parking to support its air ambulance operation at ITO.

RECOMMENDATION:

Based on this submittal, and testimony and facts presented, the HDOT recommends the Director of Transportation finds that approving the issuance of a month-to-month revocable permit to LFN, including its conditions and rent, will serve the best interests of the State.

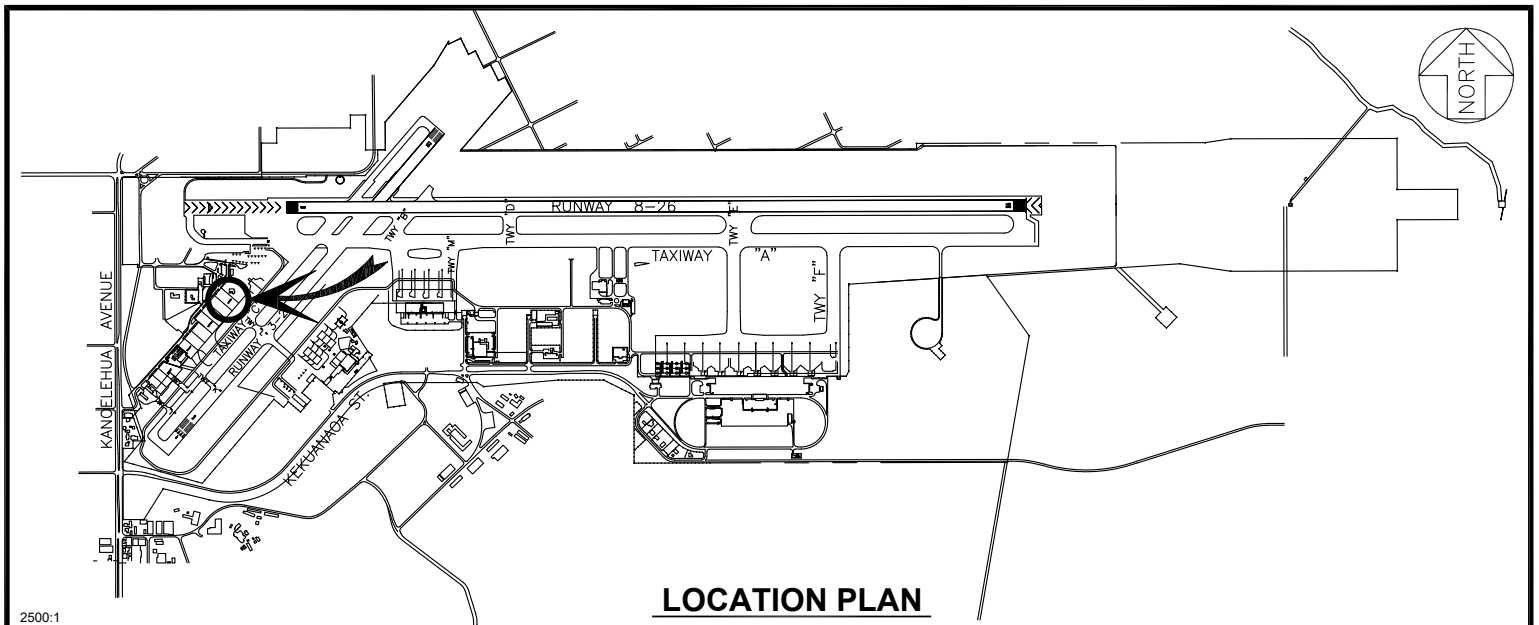
Respectfully submitted,



CURT T. OTAGURO

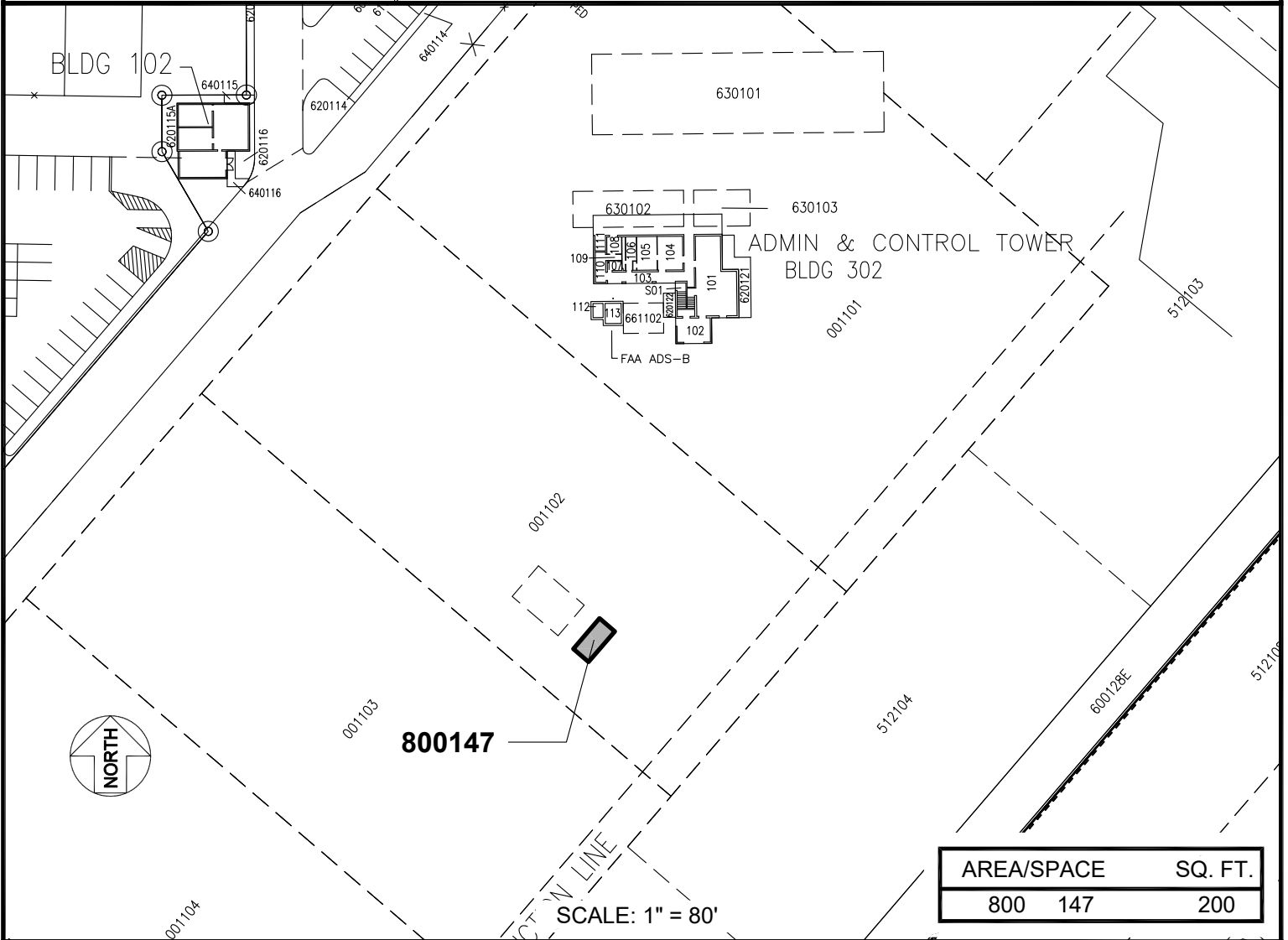
Deputy Director of Transportation for Airports

Attachment



**LOCATION PLAN**

2500:1



AREA/SPACE	SQ. FT.
800 147	200

SCALE: 1" = 80'

RP-9788

DATE : FEBRUARY 2026

EXHIBIT: **A**



**AIRPORTS**

**LIFE FLIGHT NETWORK,  
LLC**

**EQUIPMENT PARKING**

**800147**

**HILO INTERNATIONAL AIRPORT**

N:\AIRPORTS\ITO\_HILO\CAD\IP\MITO\_800147-01.DWG