

# WASH RACK & WASH AREA BMPS

## Kawaihapai Airfield (HDH)

FACT  
SHEET



**All washing of aircraft, vehicles, and equipment must be conducted at a DOTA wash area or a tenant facility wash area that has been approved by DOTA.**

Designated DOTA wash areas at HDH are located in areas that allow for evaporation of wash water or infiltration into vegetated areas. **DO NOT** discharge wash water to the storm drain wells or surface water. When possible, use off-site commercial washing or dry washing techniques instead of using a wash rack/wash area.

## BMPs



- Use minimal water
- Only biodegradable or phosphate-free detergents are acceptable for use
- Sponge wash with a bucket of water to eliminate excess wash water, where applicable
- Provide secondary containment for washing supplies
- Prevent dirt and debris from washing activities from getting into the drain as it will clog the drain lines and system
- Clean up any soap residues, dirt, etc. on the ground using absorbent materials or a wet/dry vacuum immediately after washing
- Allow vehicles to dry as much as possible before leaving the wash rack/wash area
- Pressure washing for the purpose of removing paint, adhesives, etc. is not allowed at wash racks
- **ONLY** washing and rinsing of aircraft and equipment is allowed
- Washing of personal vehicles is prohibited



## WHY?

Wash water may contain oils, greases, heavy metals, sediments, and other pollutants that can pose a threat to the storm drain system and receiving water bodies. Soaps that contain phosphates promote algae growth, which robs the ocean of essential oxygen. Algae also blocks light, limiting aquatic photosynthesis that coral need to survive. Even soaps that do not contain phosphates still bind to the tissue of fish and suffocate them. Following the wash rack BMPs will help reduce these harmful impacts.



# WASH RACK & WASH AREA BMPS

## Kawaihapai Airfield (HDH)

FACT  
SHEET



### WASH RACK AND WASH AREA LOCATIONS & USES

#### General Aviation Wash Area – East End of Sailplane Building

**For use by:** Tenants

**For washing:** aircraft

#### General Aviation Wash Area - East Ends of the T-Hanger Buildings

**For use by:** Tenants

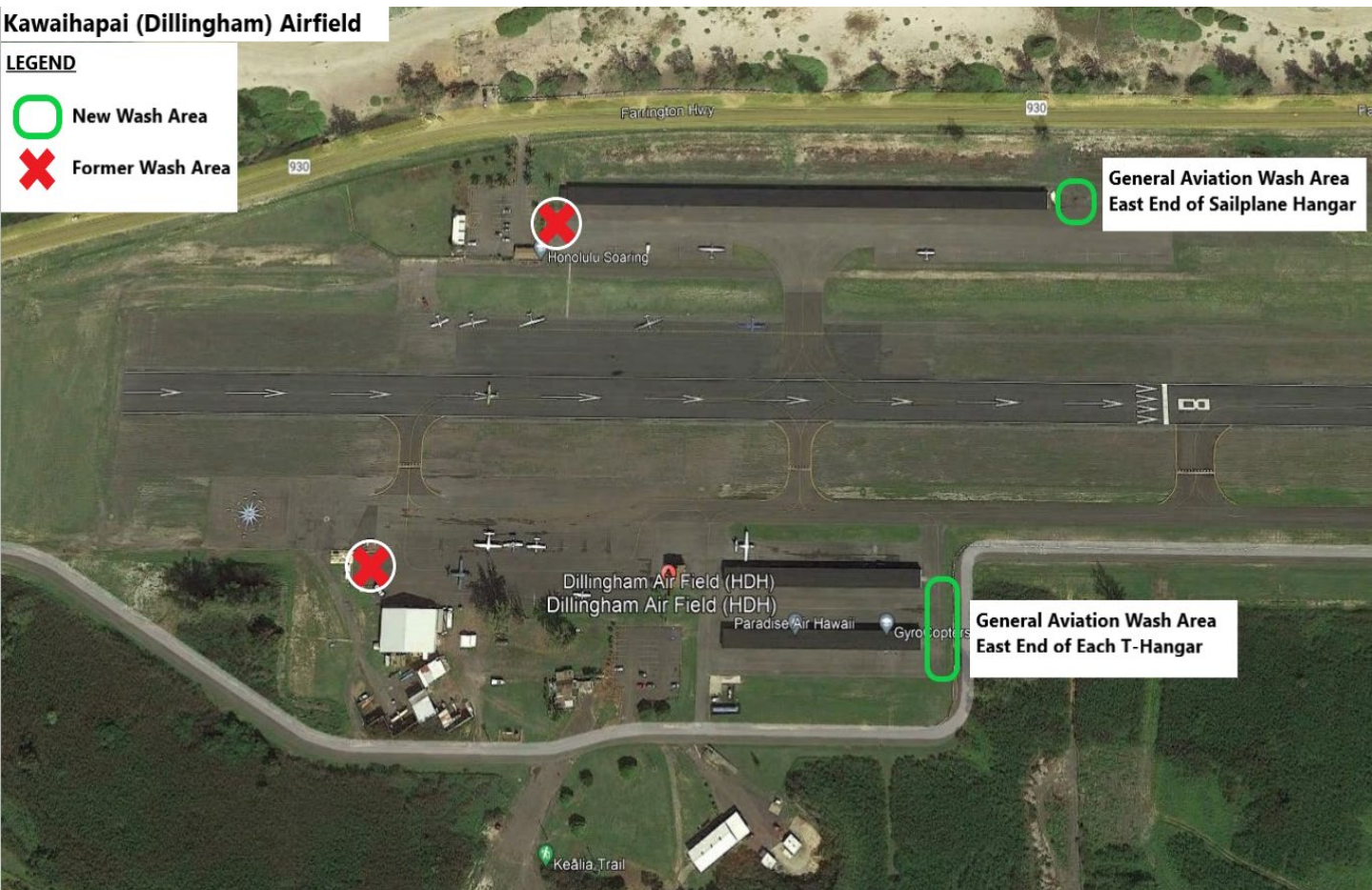
**For washing:** aircraft

***Washing at any other locations on the Airport than listed here is prohibited and will need approval from AIR-EE.***

#### Kawaihapai (Dillingham) Airfield

##### LEGEND

-  New Wash Area
-  Former Wash Area



General Aviation Wash Area  
East End of Sailplane Hangar

General Aviation Wash Area  
East End of Each T-Hanger