

WASH RACK & WASH AREA BMPS

Hilo International Airport (ITO)

FACT
SHEET



All washing of aircraft, vehicles, and equipment must be conducted at a DOTA wash rack or designated wash area.

DOTA wash racks or designated wash areas are located away from storm drains, and on an impervious area where wash water can be either contained, directed to vegetated areas, or allowed to evaporate. DO NOT discharge wash water to the storm drain system or surface waters. When possible, use off-site commercial washing or dry washing techniques instead of using wash racks or wash areas.



Best Management Practices (BMPs)

General Aviation Wash Area

Hilo International Airport, Hawaii (ITO)

All washing of aircraft must be conducted at a DOTA wash rack or a designated wash area that has been approved by DOTA.

WASH AREA OPERATING PROCEDURES

- Aircraft must be parked within marked/designated wash area.
 - WASHING OF PERSONAL VEHICLES IS STRICTLY PROHIBITED**
- Automatic shut off leak proof hose nozzle must be used to prevent excess water discharge.
- Only wash exterior surfaces of the aircraft.
 - NO ENGINE DEGREASING OR WASHING OF UNDER CARRIAGE**
- Only biodegradable, phosphate-free detergents are allowed.
- Use the minimum amount of allowable detergent and avoid over spraying.
- Sponge wash with a bucket of water to eliminate excess wash water.
- Do not wash any trash or debris into the wash area.
- Do not dispose of any contaminants such as fuels, solvents, paints, or hazardous liquids into wash area.
- Ensure water valve has been fully shut off.
- After washing, immediately clean up any oil residue on the ground (if present) using absorbent materials or a wet/dry vacuum.
- Allow aircraft to dry completely before leaving.
- Move aircraft from the wash area and clean up and dispose of any foreign objects or debris.
- Bag and **DISPOSE OF TRASH AND DEBRIS AT YOUR FACILITY.**
- Proceed slowly when exiting.

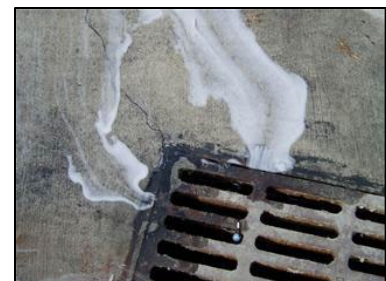
SPILL RESPONSE AND REPORTING PROCEDURES

- Immediately report all spills, regardless of size, to the following:
 - Airport Security Monitor Control: (808) 961-9308**
- Promptly clean spills using absorbent materials or a wet/dry vacuum.
- Failures to comply with these procedures may result in an environmental health/safety violation and the operator/company will be responsible for emergency clean-up response and all costs associated with the event.

- Use minimal water
- Only biodegradable or phosphate-free detergents are acceptable for use
- Sponge wash with a bucket of water to eliminate excess wash water, where applicable
- Provide secondary containment for washing supplies
- Prevent dirt and debris from washing activities from getting into the drain as it will clog the drain lines and system
- Clean up any soap residues, dirt etc. on the ground using absorbent materials or a wet/dry vacuum immediately after washing
- Allow vehicles to dry as much as possible before leaving the wash rack/wash area
- Pressure washing for the purpose of removing paint, adhesives, etc. is not allowed at wash racks
- ONLY Washing and rinsing of aircraft is allowed
- Washing of personal vehicles is prohibited

WHY?

Wash water may contain oils, greases, heavy metals, sediments, and other pollutants that can pose a threat to the storm drain system and receiving water bodies. Soaps that contain phosphates promote algae growth, which robs the ocean of essential oxygen. Algae also blocks light, limiting aquatic photosynthesis that coral need to survive. Even soaps that do not contain phosphates still bind to the tissue of fish and suffocate them. Following the wash rack BMPs will help reduce these harmful impacts.



WASH RACK & WASH AREA BMPS

Hilo International Airport (ITO)

FACT
SHEET



WASH AREA LOCATIONS & USES

Designated Wash Area – Front of old T-Hangar Building #403

For use by: General Aviation Hangar and Tie-Down Tenants

For washing: Small aircraft, and helicopters



DOTA does not allow washing of large aircraft at the Hilo International Airport.

Washing at any other locations on the Airport than listed here is prohibited and will need approval from AIR-EE.