

WASH RACK & WASH AREA BMPS

Molokai Airport

FACT SHEET



All washing of aircraft, vehicles, and equipment must be conducted at a DOTA wash rack or designated wash area.

DOTA wash racks or designated wash areas are located away from storm drains, and on an impervious area where wash water can be either contained, directed to vegetated areas, or allowed to evaporate. DO NOT discharge wash water to the storm drain system or surface waters. When possible, use off-site commercial washing or dry washing techniques instead of using wash racks or wash areas.



Best Management Practices (BMPs)

DOTA Wash Area
Department of Transportation, Airports

All washing of aircraft and equipment must be conducted at a DOTA wash rack or designated wash area located away from storm drains.

WASH AREA OPERATING PROCEDURES

1. Vehicles and equipment must be parked within the established ground wash area.
2. **WASHING OF PERSONAL VEHICLES IS STRICTLY PROHIBITED**
3. Automatic shift of water from vehicle must be used to power vehicle wash discharge.
4. Only soap suds are allowed to be used.
5. **NO ENGINE DEGREASING OR WASHING OF UNDER CARRIAGE**
6. Only biodegradable, phosphate-free detergents are allowed.
7. Use the minimum amount of detergent allowed per use and avoid over spraying.
8. Do not spray or discharge into storm drains or surface waters.
9. Do not discharge any contaminants such as oil, solvents, grease, or hazardous liquids into the wash area.
10. Pressure wash only for safety and not for cleaning.
11. Do not use water to clean up spills or residues on the ground if present. It is prohibited to wash in a nearby stream.
12. After use, clean and maintain to dry completely before leaving.
13. Do not use water to clean up spills or residues on the ground if present. It is prohibited to wash in a nearby stream.
14. Do not use water to clean up spills or residues on the ground if present. It is prohibited to wash in a nearby stream.

SPILL RESPONSE AND REPORTING PROCEDURES

1. Immediately call in spill notification to the following:
AIRPORT MAINTENANCE (ADM) - (808) 987-9860
AIRPORT RESCUE AND FIRE FIGHTING (ARFF) - (808) 987-9860
2. Please refer to spill notification procedures for a spill response.
3. Failure to comply with these procedures may result in an employee or the operation being held responsible for emergency clean up response and all costs associated with the event.

General Aviation Wash Area
Department of Transportation, Airports

All washing of aircraft must be conducted at a DOTA wash rack or designated wash area located away from storm drains.

WASH AREA OPERATING PROCEDURES

1. Aircraft must be parked within the established ground wash area.
2. **WASHING OF PERSONAL VEHICLES IS STRICTLY PROHIBITED**
3. Automatic shift of water from vehicle must be used to power vehicle wash discharge.
4. Only soap suds are allowed to be used.
5. **NO ENGINE DEGREASING OR WASHING OF UNDER CARRIAGE**
6. Only biodegradable, phosphate-free detergents are allowed.
7. Use the minimum amount of detergent allowed per use and avoid over spraying.
8. Do not spray or discharge into storm drains or surface waters.
9. Do not discharge any contaminants such as oil, solvents, grease, or hazardous liquids into the wash area.
10. Pressure wash only for safety and not for cleaning.
11. Do not use water to clean up spills or residues on the ground if present. It is prohibited to wash in a nearby stream.
12. After use, clean and maintain to dry completely before leaving.
13. Do not use water to clean up spills or residues on the ground if present. It is prohibited to wash in a nearby stream.
14. Do not use water to clean up spills or residues on the ground if present. It is prohibited to wash in a nearby stream.

SPILL RESPONSE AND REPORTING PROCEDURES

1. Immediately call in spill notification to the following:
AIRPORT MAINTENANCE (ADM) - (808) 987-9860
AIRPORT RESCUE AND FIRE FIGHTING (ARFF) - (808) 987-9860
2. Please refer to spill notification procedures for a spill response.
3. Failure to comply with these procedures may result in an employee or the operation being held responsible for emergency clean up response and all costs associated with the event.

- Use minimal water
- Only biodegradable or phosphate-free detergents are acceptable for use
- Sponge wash with a bucket of water to eliminate excess wash water, where applicable
- Provide secondary containment for washing supplies
- Prevent dirt and debris from washing activities from getting into the drain as it will clog the drain lines and system
- Clean up any soap residues, dirt etc. on the ground using absorbent materials or a wet/dry vacuum immediately after washing
- Allow vehicles to dry as much as possible before leaving the wash area
- Pressure washing for the purpose of removing paint, adhesives, etc. is not allowed at wash racks
- ONLY Washing and rinsing of aircraft and equipment is allowed
- Washing of personal vehicles is prohibited

WHY?

Wash water may contain oils, greases, heavy metals, sediments, and other pollutants that can pose a threat to the storm drain system and receiving water bodies. Soaps that contain phosphates promote algae growth, which robs the ocean of essential oxygen. Algae also blocks light, limiting aquatic photosynthesis that coral need to survive. Even soaps that do not contain phosphates still bind to the tissue of fish and suffocate them. Following the wash rack BMPs will help reduce these harmful impacts.



WASH RACK & WASH AREA BMPS

Molokai Airport

FACT
SHEET



WASH AREA LOCATIONS & USES

Wash Area #1 – DOTA Maintenance Baseyard

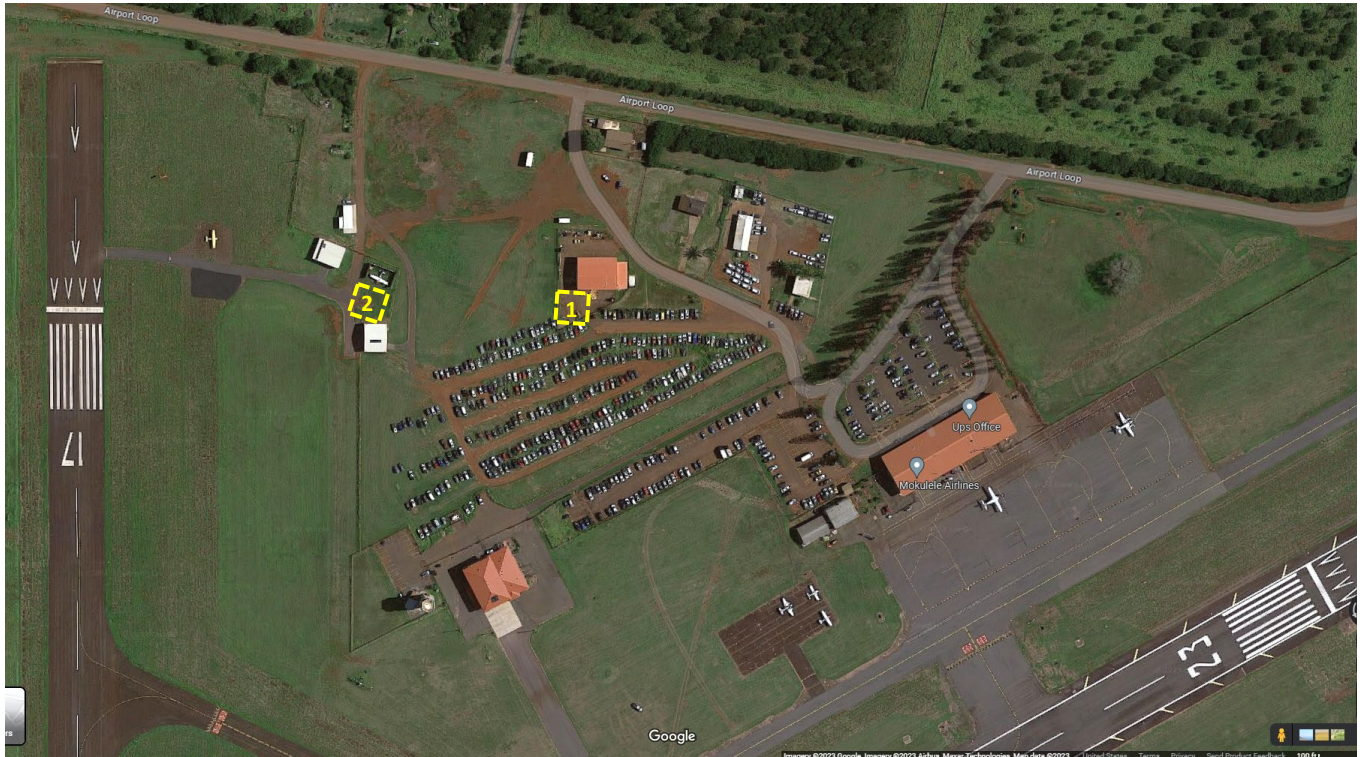
For use by: DOTA

For washing: DOTA vehicles and equipment

Wash Area #2 – General Aviation

For use by: General Aviation Tenants/Users

For washing: Small aircraft, and helicopters



Washing at any other locations on the Airport than listed here is prohibited and will need approval from AIR-EE.