

WASH RACK & WASH AREA BMPS

Daniel K. Inouye International Airport

FACT SHEET



All washing of aircraft, vehicles, and equipment must be conducted at a DOTA wash rack or a tenant facility wash area that has been approved by DOTA.

Designated DOTA wash racks or tenant wash areas are located inside a building or on an impervious area where wash water can be contained and directed to an OWS that drains to the sewer system, wells, or evaporation ponds. DO NOT discharge wash water to the storm drain system or surface water. When possible, use off-site commercial washing or dry washing techniques instead of using a wash rack/wash area.



BMPs

General Aviation Wash Rack Operations
Daniel K. Inouye International Airport, Oahu (HNL)

All washing of aircraft, vehicles, and/or equipment must be conducted at a DOTA wash rack or a tenant facility wash area that has been approved by DOTA.

WASH RACK OPERATING INSTRUCTIONS

1. Aircraft, vehicle, and/or equipment must be parked over wash rack grate prior to washing.
2. Automatic shut off leak proof hose nozzle must be used to prevent excess water discharge.
3. Turn on water valve.
4. Only wash exterior surfaces of the aircraft, vehicle, and/or equipment.
NO ENGINE DEGREASING OR WASHING OF UNDER CARRIAGE
5. Only biodegradable, phosphate-free detergents are allowed.
6. Use the minimum amount of absorbable detergent and avoid over spraying and splashing.
7. Sponge wash with a bucket of water to eliminate excess wash water.
8. Do not wash any trash or debris into the wash rack grate.
9. Do not dispose of any contaminants such as fuels, solvents, paints, or hazardous liquids into wash rack drains.
10. Turn off water valve.
11. After washing, immediately clean up any residue on the ground using absorbent materials or a wet/dry vacuum.
12. Allow aircraft, vehicle, and/or equipment to drip dry completely before leaving.
13. Move aircraft, vehicle, and/or equipment from the wash rack grate and clean up and dispose of any foreign objects. Bag and DISPOSE OF TRASH AND DEBRIS AT YOUR FACILITY.
14. In the event of system malfunction, report malfunction or system problem to: Airport Emergency Line (808) 256-6670.
15. Proceed slowly when exiting.

SPILL RESPONSE AND REPORTING PROCEDURES

If a spill occurs:

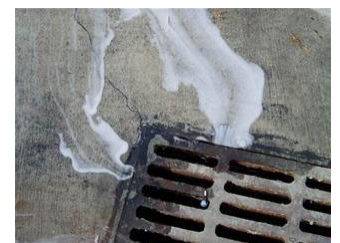
1. Immediately report all spills, regardless of size, to the following:
Airport Emergency Line (808) 256-6670
2. Promptly clean spills using absorbent materials or a wet/dry vacuum.
3. Close the area to prevent spreading of any spilled material.
4. Failure to comply with these procedures may result in an environmental health/safety violation and the operator/company will be responsible for emergency clean-up response and all costs associated with the event.



- Use minimal water
- Only biodegradable or phosphate-free detergents are acceptable for use
- Sponge wash with a bucket of water to eliminate excess wash water, where applicable
- Provide secondary containment for washing supplies
- Prevent dirt and debris from washing activities from getting into the drain as it will clog the drain lines and system
- Clean up any soap residues, dirt, etc. on the ground using absorbent materials or a wet/dry vacuum immediately after washing
- Allow vehicles to dry as much as possible before leaving the wash rack/wash area
- Pressure washing for the purpose of removing paint, adhesives, etc. is not allowed at wash racks
- ONLY washing and rinsing of aircraft and equipment is allowed
- Washing of personal vehicles is prohibited

WHY?

Wash water may contain oils, greases, heavy metals, sediments, and other pollutants that can pose a threat to the storm drain system and receiving water bodies. Soaps that contain phosphates promote algae growth, which robs the ocean of essential oxygen. Algae also blocks light, limiting aquatic photosynthesis that coral need to survive. Even soaps that do not contain phosphates still bind to the tissue of fish and suffocate them. Following the wash rack BMPs will help reduce these harmful impacts.



WASH RACK & WASH AREA BMPS

Daniel K. Inouye International Airport

FACT
SHEET



WASH RACK AND WASH AREA LOCATIONS & USES

General Aviation Wash Rack

For use by: T-hangar and Tie Down Tenants

For washing: planes and GSE equipment

North Ramp Wash Rack

For use by: Aviation Tenants

For washing: GSE equipment

South Ramp Wash Rack

For use by: South Ramp Tenants

For washing: planes, GSE, and other equipment

East Wash Rack

For use by: DOTA, Wiki Wiki Buses, tenants

For washing: buses, vehicles, GSE

Hawaiian Airlines Maintenance

Hangar (front of hangar west of trench drain): **For use by:** Hawaiian Airlines

For washing: planes and GSE/vehicles

Washing at any other locations on the Airport than listed here is prohibited and will need approval from AIR-EE.



Hawaiian Airlines Wash Rack

East Wash Rack

North Ramp Wash Rack

South Ramp Wash Rack

General Aviation Wash Rack

Worcester Ave

Lagoon Dr

Keen Pl

Rodgers Blvd
Wikipiki Bus

Aolewa Pl
Aopoko Pl

Patea St

Koapaka St

Lele St

Kahaka'aulana Island

Mokuoeo Island

Mokauea

Engine Test Rd

Liliwa St

Kuntz Ave

20th St

McCord St

Moffet St

Pala Cir

Oka Pl

Puakala St

Main St

Zhu St

Gillespie Ln

Cattin Ln

Enger St

Debris Miller Loop

Noonan St

Peltier Ave

Wye Cir

Murray Dr

Puuloa Rd

Mapunapuna St

Ahna St

Kako St

Kilihau St