

WASH RACK & WASH AREA BMPS

Kahului Airport

FACT SHEET



All washing of aircraft, vehicles, and equipment must be conducted at a DOTA wash rack or designated wash area.

DOTA wash racks or designated wash areas are located away from storm drains, and on an impervious area where wash water can be either contained, directed to vegetated areas, or allowed to evaporate. DO NOT discharge wash water to the storm drain system or surface waters. When possible, use off-site commercial washing or dry washing techniques instead of using wash racks or wash areas.



Best Management Practices (BMPs)

- Use minimal water
- Only biodegradable or phosphate-free detergents are acceptable for use
- Sponge wash with a bucket of water to eliminate excess wash water, where applicable
- Provide secondary containment for washing supplies
- Prevent dirt and debris from washing activities from getting into the drain as it will clog the drain lines and system
- Clean up any soap residues, dirt etc. on the ground using absorbent materials or a wet/dry vacuum immediately after washing
- Allow vehicles to dry as much as possible before leaving the wash area
- Pressure washing for the purpose of removing paint, adhesives, etc. is not allowed at wash racks
- ONLY Washing and rinsing of aircraft is allowed
- Washing of personal vehicles is prohibited

General Aviation Wash Area
DOTA - 001001, 001002

Washing of aircraft, vehicles, and equipment at DOTA wash racks and designated wash areas shall be done in accordance with DOTA.

WASH AREA OPERATING PROCEDURES

1. All and most are prohibited at or in the designated wash area.
2. **WASHING OF PERSONAL VEHICLES IS STRICTLY PROHIBITED**
3. Only soap cars for pieces of this airport.
4. **NO ENGINE DEGREASING OR WASHING OF UNDER CARRIAGE**
5. Only use biodegradable, phosphate-free (non-jellies) as allowed.
6. Use the minimum amount of allowable detergent and avoid over foaming.
7. Sponge wash with a bucket of water to eliminate excess wash water.
8. Do not clean by brush or debris into the wash area.
9. Do not dispose of any soiled materials such as fluids, solvents, paints, or hazardous liquids into the wash area.
10. Ensure water valves are fully shut off.
11. If no washing, immediately clean up any spillage on the ground (prevent) using absorbent materials or a wet/dry vacuum.
12. Allow to fully dry completely before leaving.
13. Remove aircraft from the wash area and clean up any residue of any large objects or debris.
14. Report any discharge of trash and debris to a supervisor.
15. Prevent secondary spillage.

SPILL RESPONSE AND REPORTING PROCEDURES

1. Immediately call 911 in all spills, regardless of size, to the following:
Security Dispatch - (808) 872-3875
2. Notify your supervisor immediately in a timely manner.
3. Failure to comply with these procedures may result in an environmental health/safety violation and the operator may be held responsible for any discharge or spillage that occurs and is subject to penalties under the event.

Heliport Wash Area
DOTA - 001001, 001002

Washing of aircraft, vehicles, and equipment at DOTA wash racks and designated wash areas shall be done in accordance with DOTA.

AREA OPERATING PROCEDURES

1. All and most are prohibited at or in the designated wash area.
2. **WASHING OF PERSONAL VEHICLES IS STRICTLY PROHIBITED**
3. Only soap cars for pieces of this airport.
4. **NO ENGINE DEGREASING OR WASHING OF UNDER CARRIAGE**
5. Only use biodegradable, phosphate-free (non-jellies) as allowed.
6. Use the minimum amount of allowable detergent and avoid over foaming.
7. Sponge wash with a bucket of water to eliminate excess wash water.
8. Do not clean by brush or debris into the wash area.
9. Do not dispose of any soiled materials such as fluids, solvents, paints, or hazardous liquids into the wash area.
10. Ensure water valves are fully shut off.
11. If no washing, immediately clean up any spillage on the ground (prevent) using absorbent materials or a wet/dry vacuum.
12. Allow to fully dry completely before leaving.
13. Remove aircraft from the wash area and clean up any residue of any large objects or debris.
14. Report any discharge of trash and debris to a supervisor.
15. Prevent secondary spillage.

SPILL RESPONSE AND REPORTING PROCEDURES

1. Immediately call 911 in all spills, regardless of size, to the following:
Security Dispatch - (808) 872-3875
2. Notify your supervisor immediately in a timely manner.
3. Failure to comply with these procedures may result in an environmental health/safety violation and the operator may be held responsible for any discharge or spillage that occurs and is subject to penalties under the event.

WHY?

Wash water may contain oils, greases, heavy metals, sediments, and other pollutants that can pose a threat to the storm drain system and receiving water bodies. Soaps that contain phosphates promote algae growth, which robs the ocean of essential oxygen. Algae also blocks light, limiting aquatic photosynthesis that coral need to survive. Even soaps that do not contain phosphates still bind to the tissue of fish and suffocate them. Following the wash rack BMPs will help reduce these harmful impacts.



WASH RACK & WASH AREA BMPS

Kahului Airport

FACT
SHEET



WASH RACK AND/OR WASH AREA LOCATIONS & USES

DOTA Wash Area #1 – DOTA Maintenance Baseyard

For use by: DOTA

For washing: DOTA vehicles and equipment

Operational Note/Restriction: Closed system - Discharges to small capacity cesspool.

DOTA Wash Rack #2 – DOTA Autoshop Baseyard

For use by: DOTA

For washing: DOTA vehicles and equipment

DOTA Wash Rack #3 – West of Triturator Building

For use by: DOTA

For washing: DOTA vehicles and equipment

Operational Note/Restriction: Closed system - Water level in evaporation pond not to exceed halfway mark.

DOTA Wash Areas #4 and #5 – DOTA ARFF Fire Training Facility

For use by: DOTA

For washing: DOTA vehicles and equipment

Tenant Designated Wash Areas #6, #7, and #8 – West Side of T-Hangar Buildings

For use by: General Aviation Hangar and Tie-Down Tenants

For washing: Small aircraft, and helicopters

Tenant Designated Wash Area #9 – North of Heliport Hangars

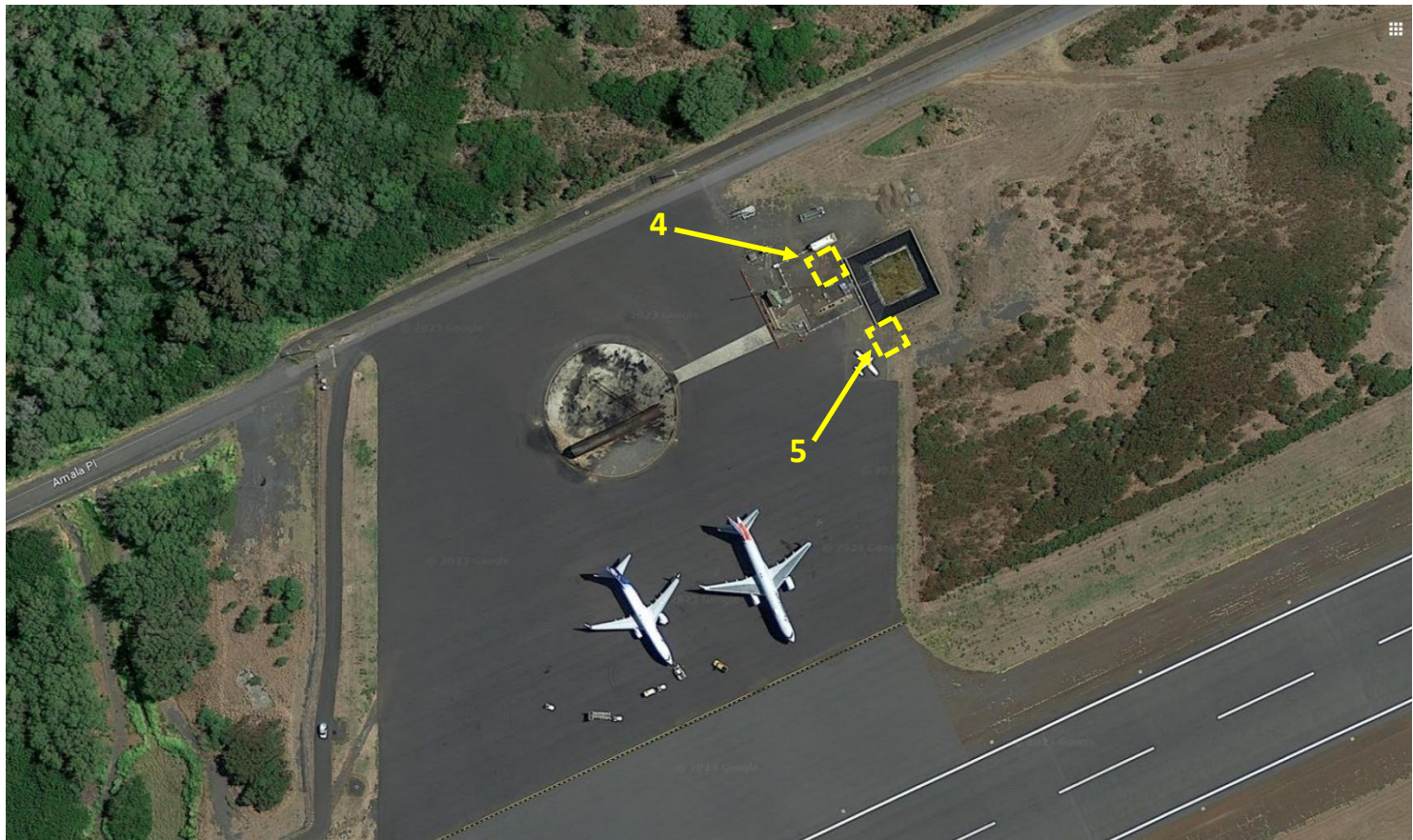
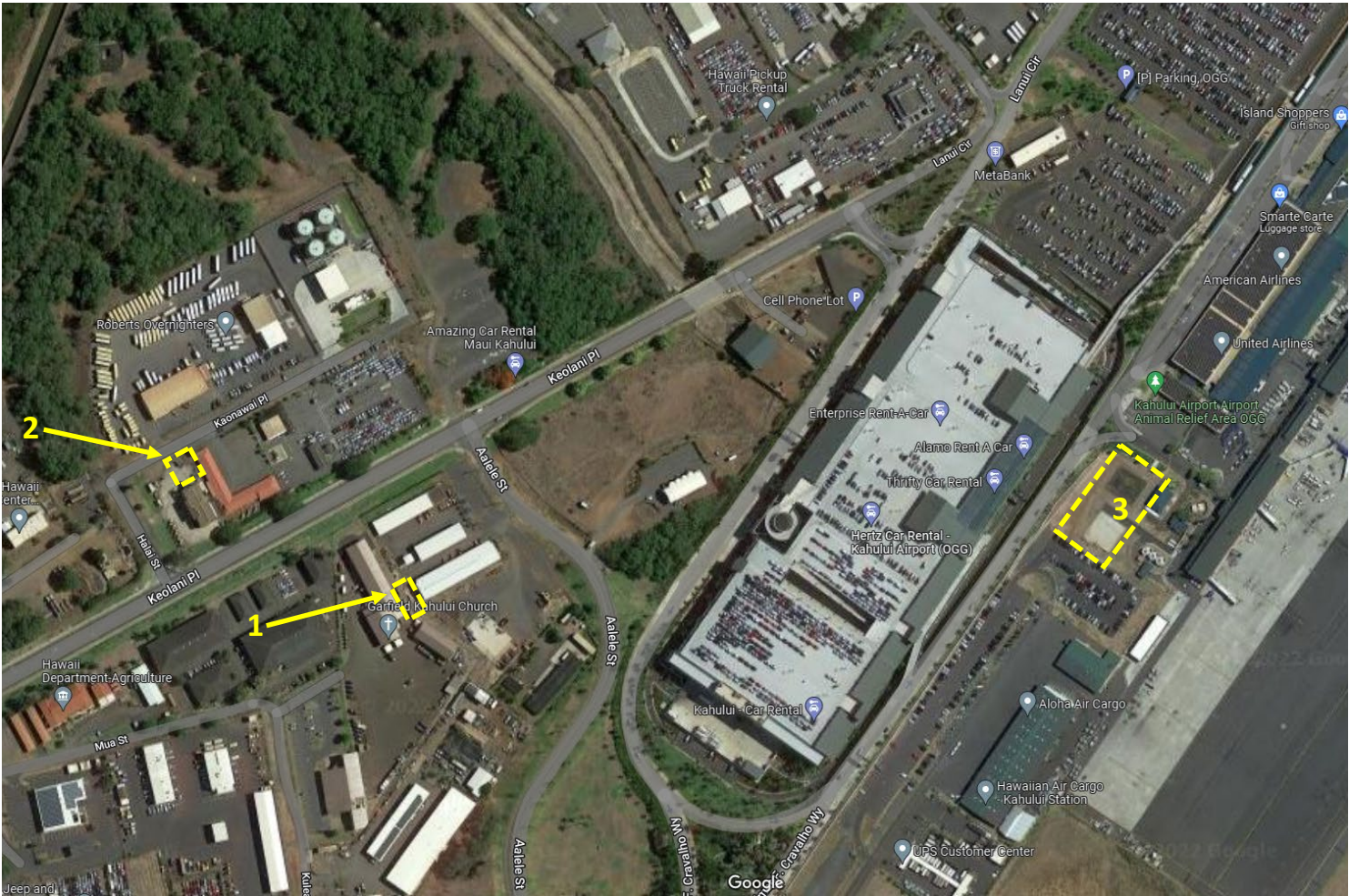
For use by: Heliport Hangar Tenants

For washing: Helicopters

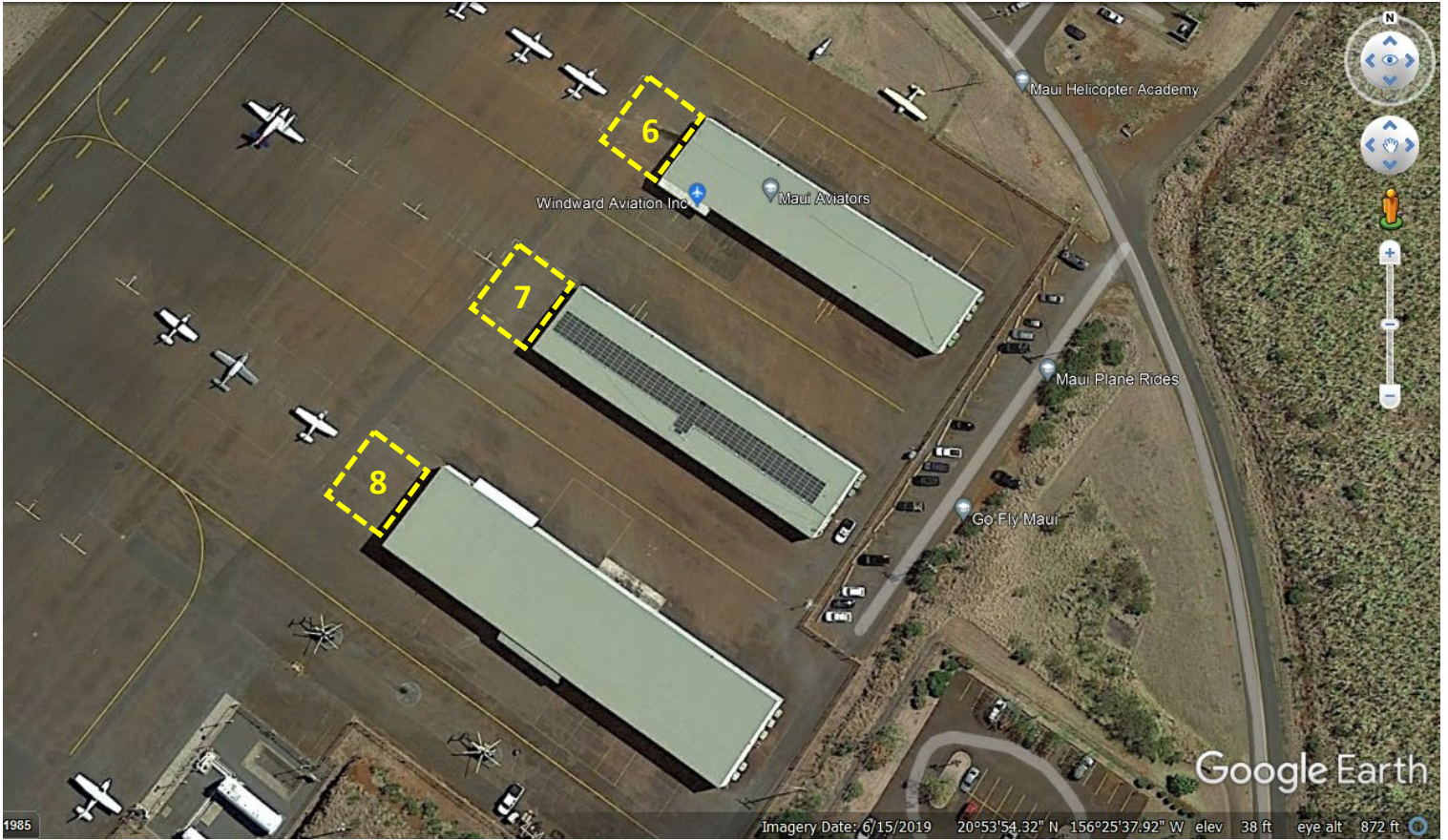
DOTA does not allow washing of large aircraft at the Kahului Airport.

Washing at any other locations on the Airport than listed here is prohibited and will need approval from AIR-EE.

 = OGG Department of Transportation – Airports (DOTA) Wash Rack Locations



 = OGG General Aviation Designated Tenant Wash Area Locations



 = OGG Heliport Designated Tenant Wash Area Location

