

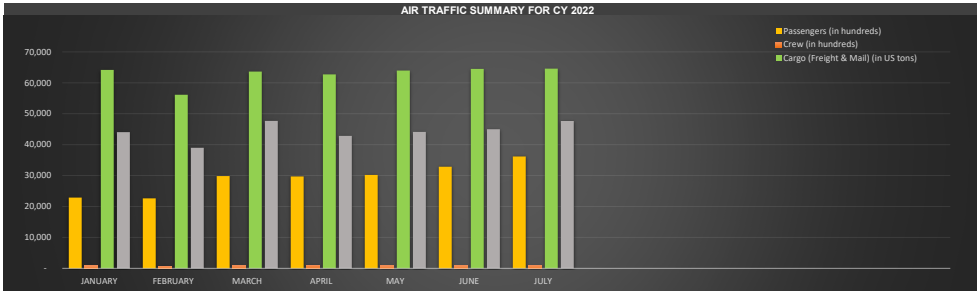
HAWAII DEPARTMENT OF TRANSPORTATION - AIRPORTS DIVISION AIR TRAFFIC STATISTICS AT A GLANCE

Click on "Year" and "Month" cells to select desired period of statistics:

YEAR	2022
MONTH	JULY

SUMMARY OF AIR TRAFFIC STATISTICS FOR CY 22 AS OF END OF JULY

AIR TRAFFIC TYPE	JANUARY	FEBRUARY	MARCH	APRIL	MAY	JUNE	JULY
Passengers (in hundreds)	22,886	22,829	29,849	29,725	30,205	32,878	36,171
Crew (in hundreds)	774	702	847	1,069	800	799	882
Cargo (Freight & Mail) (in US tons)	64,177	56,162	63,619	62,714	63,957	64,487	64,609
Air Carrier & Taxi Operations	44,045	39,013	47,704	42,867	44,143	45,012	47,644
Other Aircraft Class Operations	33,766	33,684	31,784	28,689	27,819	28,089	29,492



AIR TRAFFIC STATISTICS SUMMARY FOR THE CURRENT END OF MONTH- JULY:

TRAFFIC TYPE	JUL-2022		% Change			
	Current Month	YearToDate (YTD)	JUL22-JUL21	JUL22-JUL19	22YTD - 21YTD	22YTD - 19YTD
Passengers	3,617,123	20,434,306	↑ 17%	↓ -3.5%	↑ 65%	↓ -10%
Cargo (Freight & Mail)	64,609	439,726	↓ 3%	↓ -2.0%	↑ 6%	↓ 1.6%
Aircraft Operations	77,136	523,751	↓ -7%	↓ -18.1%	↑ 9%	↓ -15%

AIR PASSENGER TRAFFIC PER AIRPORT (EXCLUDING TRANSITS)

TRAFFIC TYPE	JUL-2022		% Change			
	Current Month	YearToDate (YTD)	JUL22-JUL21	JUL22-JUL19	22YTD - 21YTD	22YTD - 19YTD
Daniel K. Inouye Int'l (HNL)	1,782,246	10,170,419	↑ 16%	↓ -13%	↑ 64%	↓ -19%
Kahului (OGG)	877,813	4,899,416	↑ 16%	↑ 10%	↑ 52%	↑ 4%
Ellison Onizuka Kona Int'l (KOA)	425,238	2,390,477	↑ 18%	↑ 2%	↑ 57%	↓ -1%
Lihue (LIH)	367,972	2,067,750	↑ 25%	↑ 10%	↑ 123%	↑ 2%
Hilo Int'l (ITO)	131,616	711,674	↑ 39%	↑ 15%	↑ 96%	↓ -2%
Molokai (MKK)	17,834	108,055	↑ 17%	↓ -25%	↑ 46%	↓ -32%
Lanai (LNY)	10,296	61,375	↑ 6%	↑ 1%	↑ 28%	↓ -6%
Kapalua (JHM)	1,605	9,938	↑ 5%	↓ -78%	↑ 66%	↓ -82%
Kalaupapa (LUP)	1,306	7,291	↑ 67%	↑ 30%	↑ 220%	↑ 0%
Waimea-Kohala (MUE)	756	5,081	↑ 0%	↑ 31%	↓ -2%	↑ 20%
Hana (HNM)	441	2,830	↓ -23%	↑ 43%	↑ 20%	↑ 7%
Kalaeloa (JRF)	-	-	→	→	→	→
Upolu (UPP)	-	-	→	→	↓ -100%	→

AIR PASSENGER TRAFFIC PER ORIGIN/DESTINATION CLASS (EXCLUDING TRANSITS)

PERIOD	Domestic Overseas		Interisland		International		Grand Total
	Deplaned	Enplaned	Deplaned	Enplaned	Deplaned	Enplaned	
Current - JUL/22	978,216	971,385	730,452	730,598	109,026	97,446	3,617,123
Total YearToDate (YTD)	5,761,446	5,765,046	3,952,887	3,953,260	502,863	498,784	20,434,306
% Change from last year	↓ -2%	↑ -1%	↑ 37%	↑ 37%	↑ 53%	↑ 507%	↑ 17%
% Change from 2019 (Pre Pandemic)	↑ 10%	↑ 10%	↑ 1%	↑ 1%	↓ -60%	↓ -62%	↓ -4%
% Change from last YTD	↑ 41%	↑ 45%	↑ 89%	↑ 89%	↑ 624%	↑ 670%	↑ 65%
% Change from 2019 YTD	↑ 12%	↑ 10%	↓ -8%	↓ -8%	↓ -74%	↓ -74%	↓ -10%

AIR CARGO (FREIGHT & MAIL) TRAFFIC PER AIRPORT (EXCLUDING TRANSITS)

AIRPORTS	JUL-2022		% Change			
	Current Month	YearToDate (YTD)	JUL22-JUL21	JUL22-JUL19	22YTD - 21YTD	22YTD - 19YTD
Daniel K. Inouye Int'l (HNL)	52,903	353,151	↑ 6%	↑ 4%	↑ 9%	↑ 5%
Kahului (OGG)	3,934	28,120	↓ -6%	↓ -21%	↓ -9%	↓ -17%
Ellison Onizuka Kona Int'l (KOA)	2,540	20,301	↓ -17%	↓ -41%	↓ -11%	↓ -24%
Lihue (LIH)	2,720	20,225	↑ 14%	↑ 7%	↑ 30%	↑ 24%
Hilo Int'l (ITO)	1,841	13,584	↓ -16%	→	↓ -28%	↓ -24%
Hana (HNM)	-	-	→	→	→	→
Kalaeloa (JRF)	-	-	→	→	→	→
Kalaupapa (LUP)	9	51	↑ 30%	↑ 23%	↓ -2%	↑ 6%
Kapalua (JHM)	145	1,034	↓ -27%	↑ 255%	↑ 67%	↑ 164%
Lanai (LNY)	267	1,508	↑ 39%	↑ 139%	↑ 28%	↑ 94%
Molokai (MKK)	251	1,751	↓ -4%	↑ 133%	↑ 0%	↑ 135%
Dillingham Field (HDH)	-	-	→	→	→	→
Port Allen (PAK)	-	-	→	→	→	→
Waimea-Kohala (MUE)	-	-	↓ -100%	→	→	↓ -100%

AIR CARGO (FREIGHT & MAIL IN US tons) TRAFFIC PER ORIGIN/DESTINATION CLASS (EXCLUDING TRANSITS)

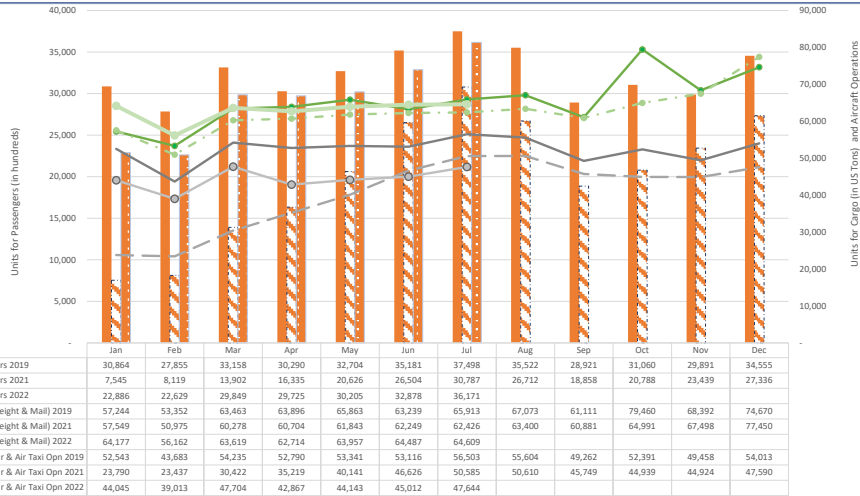
PERIOD	Domestic Overseas		Interisland		International		Grand Total
	Deplaned	Enplaned	Deplaned	Enplaned	Deplaned	Enplaned	
Current - JUL/22	24,607	11,843	9,390	9,388	4,915	4,465	64,609
Total YearToDate (YTD)	162,846	81,666	68,858	68,857	29,072	28,227	439,726
% Change from last year	↑ 2%	↑ 12%	↓ -7%	↓ -7%	↑ 40%	↑ 11%	↑ 1%
% Change from 2019 (Pre Pandemic)	↑ 18%	↑ 2%	↓ -21%	↓ -21%	↓ -21%	↑ 34%	↑ 10%
% Change from last YTD	↑ 7%	↑ 21%	↓ -8%	↓ -8%	↑ 43%	↑ 6%	↑ 6%
% Change from 2019 YTD	↑ 19%	↑ 7%	↓ -12%	↓ -12%	↓ -29%	↑ 25%	↑ 2%

TOTAL AIRCRAFT OPERATIONS (LANDINGS & TAKEOFFS) PER AIRPORT

AIRPORTS	JUL-2022		% Change			
	Current Month	YearToDate (YTD)	JUL22-JUL21	JUL22-JUL19	22YTD - 21YTD	22YTD - 19YTD
Daniel K. Inouye Int'l (HNL)	18,285	136,344	↓ -33%	↓ -37%	↓ -8%	↓ -28%
Kahului (OGG)	13,549	85,284	↓ -6%	↓ -4%	↑ 13%	↓ -9%
Ellison Onizuka Kona Int'l (KOA)	8,423	61,061	↓ -1%	↓ -15%	↑ 9%	↓ -13%
Lihue (LIH)	11,175	69,584	↑ 21%	↓ -7%	↑ 83%	↓ -5%
Hilo Int'l (ITO)	4,402	26,730	↑ 26%	↓ -18%	↑ 37%	↓ -27%
Hana (HNM)*	-	-	→	→	→	→
Kalaeloa (JRF)	15,366	105,947	↑ 3%	↓ -2%	↓ -2%	↑ 11%
Kalaupapa (LUP)*	-	-	→	→	→	→
Kapalua (JHM)	307	1,590	↓ -4%	↓ -68%	↓ -2%	↓ -77%
Lanai (LNY)*	-	-	→	→	→	→
Molokai (MKK)	2,929	19,176	↑ 22%	↓ -21%	↑ 33%	↓ -27%
Dillingham Field (HDH)	2,720	18,035	↓ -9%	↓ -14%	↓ -6%	↓ -16%
Port Allen (PAK)*	-	-	→	→	→	→
Waimea-Kohala (MUE)*	-	-	→	→	→	→

*See Data tables III-B to III-D for landing counts

Passenger, Cargo (Freight & Mail), & Operations (Air Carrier + Air Taxi)
2019 vs 2021 vs 2022



2020 RANKING OF THE 5 MAJOR AIRPORTS PER AIR TRAFFIC TYPE

CATEGORY/AIRPORTS	RANK		Source
	Worldwide	Country Wide	
1. CY 2020 - 122 Airports Qualified for Cargo Entitlement			FAA
Daniel K. Inouye Int'l (HNL)		13	
Kahului (OGG)		83	
Ellison Onizuka Kona Int'l (KOA)		78	
Lihue (LIH)		95	
Hilo Int'l (ITO)		102	
2. CY 2020 - 478 Airports Commercial Service Pax Enplanements			FAA
Daniel K. Inouye Int'l (HNL)		34	
Kahului (OGG)		57	
Ellison Onizuka Kona Int'l (KOA)		80	
Lihue (LIH)		92	
Hilo Int'l (ITO)		129	
3. CY 2020 - 2,468 Airports Total Passengers			ACI
Daniel K. Inouye Int'l (HNL)	150		
Kahului (OGG)	296		
Ellison Onizuka Kona Int'l (KOA)	476		
Lihue (LIH)	563		
Hilo Int'l (ITO)	814		
4. CY 2020 - 1,770 Airports Total Cargo in Metric Tonnes			ACI
Daniel K. Inouye Int'l (HNL)	56		
Kahului (OGG)	241		
Ellison Onizuka Kona Int'l (KOA)	283		
Lihue (LIH)	335		
Hilo Int'l (ITO)	303		
5. CY 2020 - 2,400 Airports Total Aircraft Movements			ACI
Daniel K. Inouye Int'l (HNL)	51		
Kahului (OGG)	216		
Ellison Onizuka Kona Int'l (KOA)	169		
Lihue (LIH)	406		
Hilo Int'l (ITO)	606		

AIR TRAFFIC STATISTICS FOR CALENDAR YEAR 2022 (through June)

II. Monthly Deplaned/Enplaned Air Cargo (Freight & Mail in U.S. Tons) Per Origin/Destination (OD) Class

OD/Deplaned-Enplaned	January	February	March	April	May	June	July	August	September	October	November	December	Grand Total	Prior Year	% Change
Domestic Overseas	34,912	31,873	34,799	35,379	35,214	36,084	36,451	n/a	n/a	n/a	n/a	n/a	244,712	219,636	11%
Deplaned	23,368	20,919	22,759	23,514	23,742	23,937	24,607	n/a	n/a	n/a	n/a	n/a	162,846	151,853	7%
Enplaned	11,544	10,954	12,041	11,865	11,472	12,148	11,843	n/a	n/a	n/a	n/a	n/a	81,866	67,784	21%
Interisland	21,281	17,884	20,549	19,407	19,807	20,006	16,779	n/a	n/a	n/a	n/a	n/a	137,715	149,344	-8%
Deplaned	10,640	8,942	10,274	9,704	9,904	10,004	9,388	n/a	n/a	n/a	n/a	n/a	68,858	74,672	-8%
Enplaned	10,640	8,942	10,274	9,704	9,904	10,004	9,388	n/a	n/a	n/a	n/a	n/a	68,857	74,672	-8%
International	7,985	6,405	8,271	7,927	8,936	8,394	9,380	n/a	n/a	n/a	n/a	n/a	57,298	47,043	22%
Deplaned	4,083	3,121	4,476	3,489	4,395	4,594	4,915	n/a	n/a	n/a	n/a	n/a	29,072	20,334	43%
Enplaned	3,902	3,283	3,796	4,439	4,542	3,800	4,465	n/a	n/a	n/a	n/a	n/a	28,227	26,709	6%
Grand Total	64,177	56,162	63,619	62,714	63,957	64,487	64,609	n/a	n/a	n/a	n/a	n/a	439,726	416,023	6%

II-A. Monthly Deplaned (Inbound) Air Cargo (Freight & Mail in U.S. Tons) Per Origin Class Per Airport

Origin/Airport	January	February	March	April	May	June	July	August	September	October	November	December	Grand Total	Prior Year	% Change
Domestic Overseas	23,368	20,919	22,759	23,514	23,742	23,937	24,607	n/a	n/a	n/a	n/a	n/a	162,846	151,853	7%
Daniel K. Inouye Int'l (HNL)	20,976	19,669	21,456	22,145	22,188	22,506	23,162	n/a	n/a	n/a	n/a	n/a	152,102	144,214	5%
Elison Onizuka Kona Int'l (KOA)	79	122	128	116	105	129	108	n/a	n/a	n/a	n/a	n/a	786	503	56%
Hilo Int'l (ITO)	-	-	-	-	-	-	-	n/a	n/a	n/a	n/a	n/a	-	0	-100%
Kahului (OGG)	1,063	1,018	1,149	1,228	1,423	1,277	1,306	n/a	n/a	n/a	n/a	n/a	8,464	6,987	21%
Lihue (LIH)	1,250	110	26	25	26	25	32	n/a	n/a	n/a	n/a	n/a	1,494	149	900%
Interisland	10,640	8,942	10,274	9,704	9,904	10,004	9,390	n/a	n/a	n/a	n/a	n/a	68,858	74,672	-8%
Daniel K. Inouye Int'l (HNL)	3,879	2,500	2,784	2,635	2,652	2,675	2,416	n/a	n/a	n/a	n/a	n/a	19,542	21,070	-7%
Elison Onizuka Kona Int'l (KOA)	1,883	1,723	1,915	1,789	1,820	1,902	1,658	n/a	n/a	n/a	n/a	n/a	12,691	13,501	-6%
Hana (HNM)	-	-	-	-	-	-	-	n/a	n/a	n/a	n/a	n/a	-	-	-
Hilo Int'l (ITO)	1,108	994	1,200	1,122	1,208	1,070	1,078	n/a	n/a	n/a	n/a	n/a	7,780	11,044	-30%
Kahului (OGG)	1,937	1,749	2,052	1,959	1,960	1,899	1,852	n/a	n/a	n/a	n/a	n/a	13,407	15,318	-12%
Kalaupapa (LUP)	3	4	8	6	4	7	8	n/a	n/a	n/a	n/a	n/a	40	39	3%
Kapalua (JHM)	133	133	121	78	130	127	120	n/a	n/a	n/a	n/a	n/a	842	502	68%
Lanai (LNY)	150	136	173	168	182	227	229	n/a	n/a	n/a	n/a	n/a	1,266	1,048	21%
Lihue (LIH)	1,352	1,506	1,788	1,735	1,735	1,866	1,813	n/a	n/a	n/a	n/a	n/a	11,797	10,631	11%
Molokai (MKK)	195	197	233	210	212	230	216	n/a	n/a	n/a	n/a	n/a	1,494	1,518	-2%
Waimea-Kohala (MUE)	-	-	-	-	-	-	-	n/a	n/a	n/a	n/a	n/a	-	-	-
International	4,083	3,121	4,476	3,489	4,395	4,594	4,915	n/a	n/a	n/a	n/a	n/a	29,072	20,334	43%
Daniel K. Inouye Int'l (HNL)	4,083	3,121	4,475	3,489	4,395	4,594	4,915	n/a	n/a	n/a	n/a	n/a	29,072	20,334	43%
Elison Onizuka Kona Int'l (KOA)	-	-	-	-	-	-	-	n/a	n/a	n/a	n/a	n/a	-	-	-
Kahului (OGG)	-	-	0	-	-	-	-	n/a	n/a	n/a	n/a	n/a	0	-	-
Grand Total	38,091	32,983	37,509	36,706	38,040	38,535	38,912	n/a	n/a	n/a	n/a	n/a	260,776	246,859	6%

II-B. Monthly Enplaned (Outbound) Air Cargo (Freight & Mail in U.S. Tons) Per Destination Class Per Airport

Destination/Airport	January	February	March	April	May	June	July	August	September	October	November	December	Grand Total	Prior Year	% Change
Domestic Overseas	11,544	10,954	12,041	11,865	11,472	12,148	11,843	n/a	n/a	n/a	n/a	n/a	81,866	67,784	21%
Daniel K. Inouye Int'l (HNL)	10,901	10,221	11,164	11,113	10,772	11,442	11,117	n/a	n/a	n/a	n/a	n/a	76,729	63,696	20%
Elison Onizuka Kona Int'l (KOA)	588	543	532	537	460	446	431	n/a	n/a	n/a	n/a	n/a	3,537	3,723	-5%
Hilo Int'l (ITO)	-	0	0	0	0	0	0	n/a	n/a	n/a	n/a	n/a	1	1	-9%
Kahului (OGG)	54	53	173	31	40	51	49	n/a	n/a	n/a	n/a	n/a	451	356	27%
Lihue (LIH)	1	136	171	185	200	209	246	n/a	n/a	n/a	n/a	n/a	1,148	8	14268%
Interisland	10,640	8,942	10,274	9,704	9,904	10,004	9,388	n/a	n/a	n/a	n/a	n/a	68,857	74,672	-8%
Daniel K. Inouye Int'l (HNL)	6,403	6,176	7,113	6,788	7,005	7,176	6,829	n/a	n/a	n/a	n/a	n/a	47,490	48,048	-1%
Elison Onizuka Kona Int'l (KOA)	559	446	567	466	449	455	343	n/a	n/a	n/a	n/a	n/a	3,286	4,979	-34%
Hana (HNM)	-	-	-	-	-	-	-	n/a	n/a	n/a	n/a	n/a	-	-	-
Hilo Int'l (ITO)	772	733	870	915	862	888	763	n/a	n/a	n/a	n/a	n/a	5,804	7,950	-27%
Kahului (OGG)	1,074	725	855	766	846	795	727	n/a	n/a	n/a	n/a	n/a	5,788	8,382	-31%
Kalaupapa (LUP)	1	1	1	3	2	2	2	n/a	n/a	n/a	n/a	n/a	11	13	-17%
Kapalua (JHM)	28	25	33	26	32	24	25	n/a	n/a	n/a	n/a	n/a	193	119	62%
Lanai (LNY)	21	26	35	35	41	46	38	n/a	n/a	n/a	n/a	n/a	242	128	89%
Lihue (LIH)	1,750	777	758	663	629	581	628	n/a	n/a	n/a	n/a	n/a	5,786	4,812	20%
Molokai (MKK)	32	32	43	40	39	38	34	n/a	n/a	n/a	n/a	n/a	257	240	7%
Waimea-Kohala (MUE)	-	-	-	-	-	-	-	n/a	n/a	n/a	n/a	n/a	-	-	-
International	3,902	3,283	3,796	4,439	4,542	3,800	4,465	n/a	n/a	n/a	n/a	n/a	28,227	26,709	6%
Daniel K. Inouye Int'l (HNL)	3,900	3,274	3,795	4,439	4,542	3,800	4,465	n/a	n/a	n/a	n/a	n/a	28,216	26,700	6%
Elison Onizuka Kona Int'l (KOA)	1	-	-	-	-	-	-	n/a	n/a	n/a	n/a	n/a	1	1	-
Kahului (OGG)	1	9	0	-	-	-	-	n/a	n/a	n/a	n/a	n/a	10	9	5%
Grand Total	26,086	23,179	26,111	26,008	25,917	25,952	25,697	n/a	n/a	n/a	n/a	n/a	178,950	169,165	6%

AIR TRAFFIC STATISTICS FOR CALENDAR YEAR 2022 (through June)

II-C. Monthly Deplaned (Inbound) International Air Cargo (Freight & Mail in U.S. Tons) Per Airport Per Origin

Airport/Origin	January	February	March	April	May	June	July	August	September	October	November	December	Grand Total	Prior Year	% Change
Daniel K. Inouye Int'l (HNL)	4,083	3,121	4,475	3,489	4,395	4,594	4,915	n/a	n/a	n/a	n/a	n/a	29,072	20,334	43%
Australia	179	132	216	229	265	418	479	n/a	n/a	n/a	n/a	n/a	1,918	-	
Canada	0	3	3	0.2	-	0	1	n/a	n/a	n/a	n/a	n/a	7	0	3420%
Europe	-	-	-	-	16	-	-	n/a	n/a	n/a	n/a	n/a	16	-	
Japan	1,641	920	1,863	978	1,886	1,992	2,108	n/a	n/a	n/a	n/a	n/a	11,389	8,878	28%
New Zealand	-	-	-	-	-	-	-	n/a	n/a	n/a	n/a	n/a	133	-	
Other Asia	2,199	1,980	2,266	2,197	2,054	2,134	2,122	n/a	n/a	n/a	n/a	n/a	14,952	10,473	43%
Other Pacific	64	87	127	85	173	49	72	n/a	n/a	n/a	n/a	n/a	656	983	-33%
Ellison Onizuka Kona Int'l (KOA)								n/a	n/a	n/a	n/a	n/a			
Canada								n/a	n/a	n/a	n/a	n/a			
Japan								n/a	n/a	n/a	n/a	n/a			
Other Asia								n/a	n/a	n/a	n/a	n/a			
Kahului (OGG)								n/a	n/a	n/a	n/a	n/a			
Canada								n/a	n/a	n/a	n/a	n/a			
Japan								n/a	n/a	n/a	n/a	n/a			
Other Asia								n/a	n/a	n/a	n/a	n/a			
Lihue (LIH)								n/a	n/a	n/a	n/a	n/a			
Canada								n/a	n/a	n/a	n/a	n/a			
Japan								n/a	n/a	n/a	n/a	n/a			
Other Asia								n/a	n/a	n/a	n/a	n/a			
Other Pacific								n/a	n/a	n/a	n/a	n/a			
Grand Total	4,083	3,121	4,476	3,489	4,395	4,594	4,915	n/a	n/a	n/a	n/a	n/a	29,072	20,334	43%

II-D. Monthly Enplaned (Outbound) International Air Cargo (Freight & Mail in U.S. Tons) Per Airport Per Destination

Airport/Destination	January	February	March	April	May	June	July	August	September	October	November	December	Grand Total	Prior Year	% Change
Daniel K. Inouye Int'l (HNL)	3,900	3,274	3,795	4,439	4,542	3,800	4,465	n/a	n/a	n/a	n/a	n/a	28,216	26,700	6%
Australia	2,091	1,742	2,267	2,344	1,422	2,200	2,598	n/a	n/a	n/a	n/a	n/a	14,664	15,698	-7%
Canada	119	137	143	0	-	24	39	n/a	n/a	n/a	n/a	n/a	462	38	1120%
Europe	-	-	-	-	2	-	-	n/a	n/a	n/a	n/a	n/a	2	-	
Japan	387	239	165	482	639	384	438	n/a	n/a	n/a	n/a	n/a	2,732	932	193%
New Zealand	288	247	263	327	949	246	389	n/a	n/a	n/a	n/a	n/a	2,709	2,003	35%
Other Asia	554	385	555	767	817	719	691	n/a	n/a	n/a	n/a	n/a	4,488	4,037	11%
Other Pacific	461	524	404	519	713	228	311	n/a	n/a	n/a	n/a	n/a	3,159	3,953	-21%
Ellison Onizuka Kona Int'l (KOA)	1	-	-	-	-	-	-	n/a	n/a	n/a	n/a	n/a	1	-	
Canada	1	-	-	-	-	-	-	n/a	n/a	n/a	n/a	n/a	1	-	
Japan								n/a	n/a	n/a	n/a	n/a			
Other Asia								n/a	n/a	n/a	n/a	n/a			
Kahului (OGG)	1	9	0	-	-	-	-	n/a	n/a	n/a	n/a	n/a	10	9	5%
Canada	1	9	0	-	-	-	-	n/a	n/a	n/a	n/a	n/a	10	9	5%
Japan								n/a	n/a	n/a	n/a	n/a			
Other Asia								n/a	n/a	n/a	n/a	n/a			
Lihue (LIH)								n/a	n/a	n/a	n/a	n/a			
Canada								n/a	n/a	n/a	n/a	n/a			
Japan								n/a	n/a	n/a	n/a	n/a			
Other Asia								n/a	n/a	n/a	n/a	n/a			
Other Pacific								n/a	n/a	n/a	n/a	n/a			
Grand Total	3,902	3,283	3,796	4,439	4,542	3,800	4,465	n/a	n/a	n/a	n/a	n/a	28,227	26,709	6%

AIR TRAFFIC STATISTICS FOR CALENDAR YEAR 2022 (through June)

III-C. Monthly Landings (Arrivals) of Wide Body (WB) Aircraft at Five (5) Major Airports

Airports	January	February	March	April	May	June	July	August	September	October	November	December	Grand Total	Prior Year	% Change
Daniel K. Inouye Int'l (HNL)	1,499	1,374	1,538	1,464	1,342	1,390	1,556	n/a	n/a	n/a	n/a	n/a	10,163	8,079	26%
Elilson Onizuka Kona Int'l (KOA)	68	66	66	66	54	86	88	n/a	n/a	n/a	n/a	n/a	494	476	4%
Hilo Int'l (ITO)	1	1	1	1	1	1	1	n/a	n/a	n/a	n/a	n/a	4	2	100%
Kahului (OGG)	275	244	291	305	267	332	298	n/a	n/a	n/a	n/a	n/a	2,012	2,000	1%
Lihue (LHI)	56	49	56	50	22	23	21	n/a	n/a	n/a	n/a	n/a	277	266	4%
Grand Total	1,898	1,733	1,952	1,886	1,686	1,831	1,964	n/a	n/a	n/a	n/a	n/a	12,950	10,823	20%

III-D. Monthly Landings (Arrivals) Per Airport Per FAA's Airplane Design Group

Airports/Design Group	January	February	March	April	May	June	July	August	September	October	November	December	Grand Total	Prior Year	% Change
Daniel K. Inouye Int'l (HNL)	8747	8211	9899	9704	9464	9674	10364	n/a	n/a	n/a	n/a	n/a	66,076	52,223	27%
VI	45	12	18	28	40	35	52	n/a	n/a	n/a	n/a	n/a	230	182	26%
V	1342	1219	1376	1366	1289	1264	1489	n/a	n/a	n/a	n/a	n/a	9,345	6,491	44%
IV	581	571	707	626	498	491	449	n/a	n/a	n/a	n/a	n/a	3,923	4,382	-10%
III	3758	3292	3983	3871	3970	4136	4347	n/a	n/a	n/a	n/a	n/a	27,357	21,899	25%
II	2063	1976	2379	2278	2297	2312	2307	n/a	n/a	n/a	n/a	n/a	15,612	12,818	22%
I	955	1141	1436	1535	1370	1436	1720	n/a	n/a	n/a	n/a	n/a	9,606	6,441	49%
Unspecified	3							n/a	n/a	n/a	n/a	n/a	3	10	-70%
Dillingham Field (HDH)	198	182	265	216	229	241	224	n/a	n/a	n/a	n/a	n/a	1,555	3,806	-59%
II	175	161	234	175	197	202	183	n/a	n/a	n/a	n/a	n/a	1,327	3,574	-64%
I	23	21	31	41	32	39	41	n/a	n/a	n/a	n/a	n/a	228	132	73%
Elilson Onizuka Kona Int'l (KOA)	2282	1986	2423	2097	2155	2116	2210	n/a	n/a	n/a	n/a	n/a	15,270	13,683	12%
V	45	41	52	36	26	59	51	n/a	n/a	n/a	n/a	n/a	310	231	34%
IV	130	111	119	113	111	92	102	n/a	n/a	n/a	n/a	n/a	778	1,024	-24%
III	1394	1221	1532	1363	1455	1516	1583	n/a	n/a	n/a	n/a	n/a	10,084	7,992	26%
II	478	389	454	336	325	316	329	n/a	n/a	n/a	n/a	n/a	2,927	2,812	-7%
I	233	224	266	229	238	133	145	n/a	n/a	n/a	n/a	n/a	1,469	1,602	-8%
Unspecified	2							n/a	n/a	n/a	n/a	n/a	2	22	-91%
Hana (HNM)	91	82	157	87	65	90	95	n/a	n/a	n/a	n/a	n/a	667	537	24%
II	61	55	65	60	62	60	63	n/a	n/a	n/a	n/a	n/a	426	409	4%
I	30	27	92	27	3	30	32	n/a	n/a	n/a	n/a	n/a	128	128	89%
Hilo Int'l (ITO)	1328	1067	1288	1212	1181	1069	1245	n/a	n/a	n/a	n/a	n/a	8,551	6,452	33%
V	1		1	1	1	1	1	n/a	n/a	n/a	n/a	n/a	4	2	100%
IV			1					n/a	n/a	n/a	n/a	n/a	1	2	-50%
III	547	457	584	572	595	603	626	n/a	n/a	n/a	n/a	n/a	4,048	3,695	10%
II	251	212	226	206	207	179	190	n/a	n/a	n/a	n/a	n/a	1,471	797	85%
I	530	398	476	433	378	287	428	n/a	n/a	n/a	n/a	n/a	3,027	1,956	55%
Unspecified								n/a	n/a	n/a	n/a	n/a			
Kahului (OGG)	5279	4805	5781	5490	5528	5741	6095	n/a	n/a	n/a	n/a	n/a	38,719	31,027	25%
V	360	341	417	336	217	335	267	n/a	n/a	n/a	n/a	n/a	2,293	1,363	68%
IV	162	173	194	182	173	137	166	n/a	n/a	n/a	n/a	n/a	1,187	1,849	-36%
III	2184	1961	2337	2280	2377	2401	2627	n/a	n/a	n/a	n/a	n/a	16,167	12,466	30%
II	1187	1098	1234	1125	1122	1121	1125	n/a	n/a	n/a	n/a	n/a	8,012	6,944	15%
I	1386	1232	1599	1567	1639	1747	1890	n/a	n/a	n/a	n/a	n/a	11,080	8,405	32%
Kalaeloa (JRF)	61	72	82	73	61			n/a	n/a	n/a	n/a	n/a	350	220	59%
II								n/a	n/a	n/a	n/a	n/a			
I	57	72	82	73	61			n/a	n/a	n/a	n/a	n/a	346	216	60%
Unspecified	4							n/a	n/a	n/a	n/a	n/a	4	4	
Kalaupapa (LUP)	143	141	172	160	167	158	161	n/a	n/a	n/a	n/a	n/a	1,102	742	49%
II	143	141	172	160	167	158	161	n/a	n/a	n/a	n/a	n/a	1,102	742	49%
Unspecified								n/a	n/a	n/a	n/a	n/a			
Kapalua (JHM)	189	172	189	160	198	200	194	n/a	n/a	n/a	n/a	n/a	1,302	927	40%
III								n/a	n/a	n/a	n/a	n/a			
II	183	171	189	160	198	200	194	n/a	n/a	n/a	n/a	n/a	1,295	924	40%
I	6	1						n/a	n/a	n/a	n/a	n/a	7	3	133%
Lanai (LNY)	850	870	985	1043	1061	1092	1429	n/a	n/a	n/a	n/a	n/a	7,331	6,205	18%
III	7	3	2	4	3	3	11	n/a	n/a	n/a	n/a	n/a	30	54	-44%
II	834	862	974	1034	1059	1087	1418	n/a	n/a	n/a	n/a	n/a	7,268	6,105	19%
I	7	5	9	5	2	2		n/a	n/a	n/a	n/a	n/a	31	46	-33%
Unspecified	2							n/a	n/a	n/a	n/a	n/a	2		
Lihue (LHI)	3915	3808	4294	4262	4520	4614	5023	n/a	n/a	n/a	n/a	n/a	30,844	14,827	108%
V	3	1	1	1	1	1	1	n/a	n/a	n/a	n/a	n/a	9	3	200%
IV	148	151	173	131	106	103	105	n/a	n/a	n/a	n/a	n/a	917	713	29%
III	1164	1041	1260	1250	1297	1349	1430	n/a	n/a	n/a	n/a	n/a	8,791	5,032	75%
II	178	149	179	151	152	176	152	n/a	n/a	n/a	n/a	n/a	1,137	1,136	0%
I	2421	2466	2681	2729	2964	2985	3335	n/a	n/a	n/a	n/a	n/a	19,989	7,942	152%
Unspecified	1							n/a	n/a	n/a	n/a	n/a	1	1	
Molokai (MKK)	1135	1110	1339	1304	1312	1280	1343	n/a	n/a	n/a	n/a	n/a	8,823	6,860	29%
III								n/a	n/a	n/a	n/a	n/a		28	-100%
II	1134	1109	1337	1303	1310	1280	1343	n/a	n/a	n/a	n/a	n/a	8,816	6,826	29%
I	1	1	2	1	2	1		n/a	n/a	n/a	n/a	n/a	7	6	17%
Port Allen (PAK)	9	9	12	15	5	11	6	n/a	n/a	n/a	n/a	n/a	67	61	10%
II								n/a	n/a	n/a	n/a	n/a			
I	9	9	12	15	5	11	6	n/a	n/a	n/a	n/a	n/a	67	61	10%
Upolu (UPP)								n/a	n/a	n/a	n/a	n/a	-	-	
I								n/a	n/a	n/a	n/a	n/a			
Waimea-Kohala (MUE)	82	72	70	65	70	61	62	n/a	n/a	n/a	n/a	n/a	482	550	-12%
II	67	62	62	59	61	61	62	n/a	n/a	n/a	n/a	n/a	434	417	4%
I	15	10	8	6	9			n/a	n/a	n/a	n/a	n/a	48	133	-64%
Grand Total	24,309	22,587	26,956	25,888	26,016	26,347	28,451	n/a	n/a	n/a	n/a	n/a	181,139	138,120	31%

Sources:

- Monthly air traffic summary reports submitted by various airline companies/aircraft operators
- Monthly airport operations count submitted by FAA tower
- Monthly landing fee reports submitted by various airline companies/aircraft operators
- FAA's guide on Airplane Design Group and aircraft specifications

Notes:

- Updated as of rupdate 09/16/22.
- Totals for cargo may slightly differ due to conversion from pounds to tonnage and rounding off

AIR TRAFFIC STATISTICS FOR CALENDAR YEAR 2021

Statewide Monthly Air Traffic Per Origin/Destination (OD) Class (excluding Transits)															
OD Class/Air Traffic Type	January	February	March	April	May	June	July	August	September	October	November	December	Grand Total	Prior Year	% Change
Domestic Overseas															
Passengers	469,292	510,487	919,253	1,099,698	1,359,288	1,734,038	1,976,846	1,736,693	1,183,901	1,306,542	1,400,524	1,618,479	15,315,041	5,332,640	187%
Crew	42,021	38,727	49,715	53,937	62,978	74,553	85,754	81,752	71,539	72,979	72,439	80,235	786,629	273,240	188%
Caroq (Freight & Mail in US Ton)	29,011	26,790	31,451	31,932	32,723	33,055	34,675	35,143	34,047	35,535	35,881	41,146	401,388	326,059	23%
Interisland															
Passengers	266,267	290,004	457,105	519,888	685,238	891,492	1,068,582	895,614	674,238	735,426	874,690	1,009,986	8,368,530	5,114,783	64%
Caroq (Freight & Mail in US Ton)	22,104	19,073	22,310	21,879	21,573	22,174	20,230	19,841	18,639	21,451	23,571	27,062	259,908	256,834	1%
International															
Passengers	18,980	11,385	13,845	13,873	18,026	24,914	33,282	38,910	27,687	36,835	68,681	105,095	411,513	1,432,866	-71%
Crew	2,090	1,646	2,377	2,618	2,138	2,276	2,764	4,888	2,984	3,635	4,799	6,689	38,904	77,075	-50%
Caroq (Freight & Mail in US Ton)	6,433	5,112	6,517	6,893	7,547	7,021	7,521	8,416	8,196	8,005	8,046	9,242	88,948	75,225	18%

Statewide Monthly Aircraft Operations per Aircraft Class per Itinerant/Local as accounted by the Air Traffic Control Tower (ATCT)															
Itinerant-Local/Aircraft Class	January	February	March	April	May	June	July	August	September	October	November	December	Grand Total	Prior Year	% Change
Itinerant															
Air Carrier	14,186	12,430	15,670	17,566	19,250	23,371	24,557	25,186	23,133	22,678	22,736	24,886	245,649	166,033	48%
Air Taxi	9,858	11,166	15,016	18,137	21,255	23,824	26,028	25,424	22,616	22,261	22,188	22,704	240,477	124,165	94%
General Aviation	7,483	7,273	8,408	9,704	9,942	10,206	10,474	9,642	8,903	9,434	10,062	9,294	110,825	83,861	32%
Military	2,175	2,385	2,122	2,363	2,407	2,523	2,100	2,762	2,411	2,350	2,158	2,046	27,602	25,524	9%
Local															
Civilian Power	20,964	20,269	20,325	23,116	23,137	21,296	20,087	19,953	21,143	19,965	20,050	18,188	248,493	253,232	-2%
General Aviation	1,142	1,432	1,578	2,398	3,388	2,176	2,302	1,785	1,334	1,898	1,874	1,687	23,892	12,566	90%
Glider	17,318	17,096	17,107	17,673	16,741	17,002	15,158	15,239	16,252	15,279	15,426	14,247	194,538	212,436	-8%
Military	174	156	298	570	242	288	248	202	290	256	290	238	3,252	2,426	34%
Military	1,432	1,585	1,342	2,475	2,766	1,830	2,379	2,727	3,267	2,532	2,460	2,016	26,811	25,804	4%
Grand Total	54,666	53,523	61,541	70,886	75,991	81,220	83,246	82,967	78,206	76,688	77,194	77,118	873,246	652,815	34%

I. Monthly Enplaned/Deplaned Air Passengers Per Origin/Destination (OD) Class (excluding Transit Passengers)															
OD Class/Deplaned-Air	January	February	March	April	May	June	July	August	September	October	November	December	Grand Total	Prior Year	% Change
Domestic Overseas															
Deplaned	218,522	265,260	487,611	531,571	699,498	886,280	995,399	817,758	588,884	655,499	709,880	838,817	7,694,979	2,634,432	192%
Enplaned	250,770	245,227	431,642	568,127	658,790	847,758	981,447	918,834	595,017	651,043	690,644	773,682	7,620,062	2,689,208	182%
Interisland															
Deplaned	266,267	290,004	457,105	519,888	685,238	891,492	1,068,582	895,614	674,238	735,426	874,690	1,009,986	8,368,530	5,114,544	64%
Enplaned	133,132	145,070	228,472	259,944	342,619	445,746	534,291	447,807	337,375	367,432	437,345	504,993	4,184,226	2,557,235	64%
International															
Deplaned	18,980	11,385	13,845	13,873	18,026	24,914	33,282	38,910	27,687	36,835	68,681	105,095	411,513	1,432,866	-71%
Enplaned	8,892	5,701	7,073	7,799	9,566	13,221	17,236	21,653	13,628	19,387	36,295	58,435	218,886	697,632	-69%
Grand Total	754,539	811,876	1,390,203	1,633,459	2,062,552	2,650,444	3,076,710	2,671,217	1,885,826	2,078,803	2,343,896	2,733,660	24,095,884	11,880,050	103%

I-A. Monthly Deplaned (Inbound) Air Passengers Per Origin Class Per Airport (excluding Transit Passengers)															
Origin Class/Airport	January	February	March	April	May	June	July	August	September	October	November	December	Grand Total	Prior Year	% Change
Domestic Overseas															
Daniel K. Inouye Int'l (HNL)	121,141	133,933	248,925	289,049	364,908	455,010	521,916	430,217	306,479	334,807	372,628	443,605	4,002,618	1,495,418	168%
Ellison Onizuka Kona Int'l (KOA)	29,842	39,377	69,176	65,873	83,092	106,083	114,972	91,608	63,890	75,482	83,976	104,632	928,003	300,186	209%
Hilo Int'l (ITO)	-	-	592	1,122	1,206	3,037	4,203	3,997	1,887	2,159	2,520	2,769	23,492	6,045	289%
Kahului (OGG)	65,694	89,041	163,235	169,813	200,404	246,945	288,907	218,894	159,427	178,366	184,130	211,968	2,156,824	634,750	240%
Lihue (LIH)	1,845	2,909	5,683	25,714	49,888	75,205	85,401	73,042	57,201	64,885	66,626	75,843	584,042	199,033	195%
Interisland															
Daniel K. Inouye Int'l (HNL)	64,389	66,223	107,019	120,612	157,566	197,097	237,679	196,409	147,683	147,626	190,410	222,692	1,855,405	1,165,429	59%
Ellison Onizuka Kona Int'l (KOA)	16,206	19,269	29,014	31,705	39,388	54,402	65,178	53,418	40,014	48,020	55,653	61,983	514,700	304,400	69%
Hana (HNM)	68	76	133	133	179	258	269	173	176	200	205	195	2,065	928	123%
Hilo Int'l (ITO)	13,200	12,764	19,847	19,412	27,362	34,871	43,187	34,182	27,466	37,762	41,185	48,475	359,713	238,164	51%
Kahului (OGG)	24,693	26,492	43,562	49,472	67,225	92,406	111,286	95,984	70,062	73,068	85,995	100,123	840,368	484,703	73%
Kaunoi (JRF)	-	-	-	-	-	-	-	-	-	-	-	-	-	-	-
Kalaupapa (LUP)	48	48	65	84	247	386	516	386	461	612	681	685	4,219	2,378	77%
Kapalua (JHM)	166	222	285	338	586	693	763	768	554	588	616	625	6,204	8,811	-30%
Lana (LNY)	1,885	2,289	3,239	3,486	3,844	4,341	4,810	4,548	3,640	3,950	3,950	3,850	43,832	20,981	109%
Lihue (LIH)	9,031	12,096	20,087	29,719	39,903	54,099	62,673	55,563	42,117	49,077	52,026	58,630	485,021	274,616	77%
Mokoa (MKK)	3,274	3,709	5,035	4,799	5,597	6,623	7,544	6,079	4,932	6,171	6,284	7,367	67,614	54,478	24%
Upolu (LPP)	-	-	-	-	-	-	-	-	-	-	-	-	-	-	-
Waimea-Kohala (MUE)	172	1,882	186	184	272	370	386	297	270	358	340	368	5,085	2,347	117%
International															
Daniel K. Inouye Int'l (HNL)	7,016	5,511	6,993	7,652	9,532	13,221	16,938	19,673	12,256	15,045	21,982	37,693	173,512	593,364	-71%
Ellison Onizuka Kona Int'l (KOA)	304	21	-	-	-	-	-	-	146	2,251	3,274	5,996	38,112	-84%	
Kahului (OGG)	1,572	169	80	147	34	-	298	1,980	1,372	4,092	10,577	15,743	36,064	55,927	-38%
Lihue (LIH)	-	-	-	-	-	-	-	-	104	1,485	1,725	3,314	10,229	-68%	
Grand Total	360,546	416,031	723,156	799,314	1,051,683	1,345,247	1,546,926	1,287,218	939,887	1,042,318	1,183,520	1,402,245	12,098,091	5,889,299	105%

AIR TRAFFIC STATISTICS FOR CALENDAR YEAR 2021

I-B. Monthly Enplaned (Outbound) Air Passengers Per Destination Class Per Airport (excluding transit Passengers)																
Destination Class/Airport	January	February	March	April	May	June	July	August	September	October	November	December	Grand Total	Prior Year	% Change	
Domestic Overseas	250,770	245,227	431,642	568,127	659,790	847,758	981,447	919,935	595,017	651,043	690,644	779,662	7,620,062	2,698,208	182%	
Daniel K. Inouye Int'l (HNL)	136,005	127,009	227,607	292,847	351,078	442,815	518,199	481,709	316,369	338,161	362,794	427,954	4,022,547	1,507,032	167%	
Ellison Onizuka Kona Int'l (KOA)	35,002	35,345	58,698	71,854	76,146	99,177	112,018	105,048	62,401	70,080	80,419	90,687	896,875	305,078	194%	
Hilo Int'l (ITO)	-	-	792	844	1,347	3,412	4,076	3,165	1,793	2,005	2,478	3,103	23,115	5,717	304%	
Kahului (OGG)	78,354	80,242	137,937	178,649	187,310	231,146	264,335	247,681	158,569	176,921	179,847	190,786	2,111,777	663,385	218%	
Lihue (LIH)	1,409	2,631	6,608	23,833	43,909	71,208	82,819	81,332	55,885	63,876	65,106	67,132	565,748	216,996	161%	
International	133,135	144,934	228,633	259,944	342,619	445,746	534,291	447,807	336,863	367,994	437,345	504,993	4,184,304	2,557,309	64%	
Daniel K. Inouye Int'l (HNL)	57,459	66,941	104,647	116,580	155,067	193,236	229,654	193,814	145,417	177,468	193,604	221,210	1,855,097	1,150,356	61%	
Ellison Onizuka Kona Int'l (KOA)	18,830	18,894	31,391	34,364	41,862	56,680	67,638	56,277	41,511	51,948	51,899	63,934	535,208	315,285	70%	
Hana (HNM)	83	83	118	177	223	252	307	216	189	234	215	231	2,328	981	137%	
Hilo Int'l (ITO)	14,298	12,683	19,967	19,983	27,182	34,347	43,170	32,546	27,091	37,269	40,112	45,339	353,987	239,360	48%	
Kahului (OGG)	27,874	28,880	46,175	53,794	68,482	96,642	114,877	94,716	70,412	81,553	87,553	104,279	875,237	478,624	83%	
Kalaheo (JRF)	-	-	-	-	-	-	-	-	-	-	-	-	-	-	-	
Kalaupapa (LUP)	31	40	64	86	151	249	267	184	187	210	208	424	2,101	1,878	12%	
Kapulea (JHM)	186	233	282	323	497	656	769	716	490	573	572	546	5,842	8,764	-33%	
Lanai (LNY)	2,079	2,270	3,144	3,626	3,781	4,267	4,944	4,612	3,421	3,993	3,992	3,342	43,471	21,580	101%	
Lihue (LIH)	8,608	11,113	17,687	25,855	39,285	52,214	64,617	57,900	42,763	8,119	52,427	58,453	439,041	283,008	55%	
Molokai (MKK)	3,517	3,633	4,957	4,965	5,805	6,867	7,680	6,530	5,126	6,297	6,404	6,866	68,647	55,129	25%	
Upolu (UPP)	4	-	-	-	-	-	-	-	-	-	-	-	4	-	-	
Waimea-Kohala (MUE)	166	164	201	191	284	357	368	296	256	330	359	389	3,341	2,344	43%	
International	10,088	5,684	6,772	6,074	8,460	11,693	16,046	17,257	14,059	17,448	32,386	46,660	192,627	735,234	-74%	
Daniel K. Inouye Int'l (HNL)	7,471	5,156	6,605	5,862	8,391	11,693	16,029	15,488	12,805	14,649	21,085	30,579	155,813	622,278	-75%	
Ellison Onizuka Kona Int'l (KOA)	85	38	-	-	-	-	-	-	-	18	1,505	2,636	4,282	40,021	-89%	
Kahului (OGG)	2,532	490	167	212	69	-	17	1,769	1,254	2,763	8,564	12,147	29,984	61,519	-51%	
Lihue (LIH)	-	-	-	-	-	-	-	-	-	18	1,232	1,298	2,548	11,416	-78%	
Grand Total	393,993	395,845	667,047	834,145	1,010,869	1,305,197	1,531,764	1,383,999	945,939	1,038,485	1,160,375	1,331,315	11,996,993	5,990,751	100%	

I-C. Monthly Deplaned (Inbound) International Air Passengers Per Airport Per Origin (excluding transits)																
Airport/Origin	January	February	March	April	May	June	July	August	September	October	November	December	Grand Total	Prior Year	% Change	
Daniel K. Inouye Int'l (HNL)	7,016	5,511	6,993	7,652	9,532	13,221	16,938	19,873	12,256	16,045	21,982	37,693	173,512	693,364	-71%	
Australia	-	-	-	-	94	-	-	-	-	-	-	3,770	3,964	52,328	-63%	
Canada	702	89	44	-	-	-	-	2,127	1,171	3,051	7,057	14,770	29,011	49,189	-41%	
Europe	-	-	-	-	-	-	-	-	-	-	-	-	-	-	-	
Japan	2,457	1,321	1,817	2,325	2,149	2,926	4,645	4,081	2,464	3,104	3,550	5,138	35,977	333,240	-89%	
New Zealand	-	-	-	-	-	-	-	-	-	-	-	-	-	18,590	-100%	
Other Asia	3,788	3,827	4,723	4,950	6,877	9,365	11,372	11,090	7,856	7,920	10,265	12,841	94,874	127,950	-26%	
Other Pacific	59	274	409	377	412	930	921	2,375	765	970	1,110	1,174	9,788	12,067	-19%	
Ellison Onizuka Kona Int'l (KOA)	304	21	-	-	-	-	-	-	-	146	2,251	3,274	5,996	38,112	-84%	
Canada	304	21	-	-	-	-	-	-	-	146	2,251	3,274	5,996	19,292	-69%	
Japan	-	-	-	-	-	-	-	-	-	-	-	-	-	18,820	-100%	
Other Asia	-	-	-	-	-	-	-	-	-	-	-	-	-	-	-	
Kahului (OGG)	1,572	169	80	147	34	-	298	1,980	1,372	4,092	10,577	15,743	36,064	55,927	-36%	
Canada	1,572	169	80	147	34	-	298	1,980	1,372	4,092	10,577	15,743	36,064	55,927	-36%	
Japan	-	-	-	-	-	-	-	-	-	-	-	-	-	-	-	
Other Asia	-	-	-	-	-	-	-	-	-	-	-	-	-	-	-	
Lihue (LIH)	-	-	-	-	-	-	-	-	-	104	1,485	1,725	3,314	10,229	-68%	
Canada	-	-	-	-	-	-	-	-	-	104	1,485	1,725	3,314	10,229	-68%	
Japan	-	-	-	-	-	-	-	-	-	-	-	-	-	-	-	
Other Asia	-	-	-	-	-	-	-	-	-	-	-	-	-	-	-	
Other Pacific	-	-	-	-	-	-	-	-	-	-	-	-	-	-	-	
Grand Total	8,892	5,701	7,073	7,799	9,566	13,221	17,236	21,653	13,628	19,387	36,295	58,435	218,886	697,632	-69%	

I-D. Monthly Enplaned (Outbound) International Air Passengers Per Airport Per Destination (excluding transits)																
Airport/Destination	January	February	March	April	May	June	July	August	September	October	November	December	Grand Total	Prior Year	% Change	
Daniel K. Inouye Int'l (HNL)	7,471	5,156	6,605	5,862	8,391	11,693	16,029	15,488	12,805	14,649	21,085	30,579	155,813	622,278	-75%	
Australia	-	-	244	-	142	-	-	-	-	-	-	-	1,024	57,515	-98%	
Canada	810	269	42	-	-	-	-	1,941	1,211	2,448	5,724	11,661	24,106	56,714	-57%	
Europe	-	-	-	-	-	-	-	-	-	-	-	-	-	-	-	
Japan	2,259	1,111	1,820	1,635	2,471	3,163	2,977	3,127	2,855	2,639	3,560	3,808	31,425	353,219	-91%	
New Zealand	-	-	-	61	-	-	-	-	-	-	-	-	61	19,706	-100%	
Other Asia	4,259	3,475	4,076	3,777	5,517	7,734	12,149	9,795	7,788	8,534	10,475	13,011	90,590	121,741	-26%	
Other Pacific	143	301	423	389	403	654	903	625	951	1,028	1,326	1,075	8,221	13,383	-39%	
Ellison Onizuka Kona Int'l (KOA)	85	38	-	-	-	-	-	-	-	18	1,505	2,636	4,282	40,021	-89%	
Canada	85	38	-	-	-	-	-	-	-	18	1,505	2,636	4,282	23,675	-82%	
Japan	-	-	-	-	-	-	-	-	-	-	-	-	-	16,346	-100%	
Other Asia	-	-	-	-	-	-	-	-	-	-	-	-	-	-	-	
Kahului (OGG)	2,532	490	167	212	69	-	17	1,769	1,254	2,763	8,564	12,147	29,984	61,519	-51%	
Canada	2,532	490	167	212	69	-	17	1,769	1,254	2,763	8,564	12,147	29,984	61,519	-51%	
Japan	-	-	-	-	-	-	-	-	-	-	-	-	-	-	-	
Other Asia	-	-	-	-	-	-	-	-	-	-	-	-	-	-	-	
Lihue (LIH)	-	-	-	-	-	-	-	-	-	18	1,232	1,298	2,548	11,416	-78%	
Canada	-	-	-	-	-	-	-	-	-	18	1,232	1,298	2,548	11,416	-78%	
Japan	-	-	-	-	-	-	-	-	-	-	-	-	-	-	-	
Other Asia	-	-	-	-	-	-	-	-	-	-	-	-	-	-	-	
Other Pacific	-	-	-	-	-	-	-	-	-	-	-	-	-	-	-	
Grand Total	10,088	5,684	6,772	6,074	8,460	11,693	16,046	17,257	14,059	17,448	32,386	46,660	192,627	735,234	-74%	

AIR TRAFFIC STATISTICS FOR CALENDAR YEAR 2021

II. Monthly Deplaned/Enplaned Air Cargo (Freight & Mail in U.S. Tons) Per Origin/Destination (OD) Class															
OD/Deplaned-Enplaned	January	February	March	April	May	June	July	August	September	October	November	December	Grand Total	Prior Year	% Change
Domestic Overseas	29,011	26,790	31,451	31,932	32,723	33,055	34,675	35,143	34,047	35,535	35,881	41,146	401,388	326,059	23%
Deplaned	20,020	18,318	22,010	21,868	22,364	23,126	24,147	23,829	22,813	23,822	24,287	28,047	274,651	217,572	26%
Enplaned	8,992	8,472	9,440	10,064	10,359	9,929	10,528	11,315	11,234	11,713	11,594	13,099	126,738	108,486	17%
Interisland	22,104	19,073	22,310	21,879	21,973	22,174	20,230	19,841	18,639	21,451	23,971	27,062	259,908	256,834	1%
Deplaned	11,052	9,540	11,152	10,940	10,787	11,087	10,115	9,920	9,324	10,726	11,786	13,531	129,959	128,417	1%
Enplaned	11,052	9,533	11,159	10,940	10,787	11,087	10,115	9,920	9,315	10,726	11,786	13,531	129,949	128,417	1%
International	6,433	5,112	6,517	6,893	7,547	7,021	7,521	8,416	8,196	8,005	8,046	9,242	88,948	75,225	18%
Deplaned	2,707	2,046	2,633	3,053	3,300	3,084	3,511	4,048	4,349	4,011	4,180	4,681	41,603	32,428	28%
Enplaned	3,726	3,066	3,884	3,840	4,247	3,936	4,010	4,369	3,846	3,994	3,865	4,561	47,345	42,797	11%
Grand Total	57,549	50,975	60,276	60,704	61,843	62,249	62,426	63,400	60,881	64,991	67,498	77,450	750,245	658,118	14%

II-A. Monthly Deplaned (Inbound) Air Cargo (Freight & Mail in U.S. Tons) Per Origin Class Per Airport															
Origin/Airport	January	February	March	April	May	June	July	August	September	October	November	December	Grand Total	Prior Year	% Change
Domestic Overseas	20,020	18,318	22,010	21,868	22,364	23,126	24,147	23,829	22,813	23,822	24,287	28,047	274,651	217,572	26%
Daniel K. Inouye Int'l (HNL)	19,168	17,417	20,859	20,731	21,263	21,901	22,875	22,498	21,198	21,719	22,057	25,430	257,115	207,077	24%
Ellison Onizuka Kona Int'l (KOA)	47	58	74	87	70	91	95	115	98	80	95	116	1,004	958	5%
Hilo Int'l (ITO)	-	-	-	-	-	0	0	0	1	-	-	-	1	3	-62%
Kahului (OGG)	782	830	1,066	1,056	1,012	1,104	1,136	1,163	1,120	1,098	1,208	1,451	13,026	9,149	42%
Lihue (LIH)	22	12	11	14	19	30	41	53	398	926	928	1,051	3,505	365	810%
Interisland	11,052	9,940	11,152	10,940	10,787	11,087	10,115	9,920	9,324	10,726	11,786	13,531	129,959	128,417	1%
Daniel K. Inouye Int'l (HNL)	3,145	2,774	3,216	3,044	3,031	3,152	2,708	2,665	2,810	3,294	3,919	4,443	38,200	34,508	11%
Ellison Onizuka Kona Int'l (KOA)	1,933	1,788	2,143	1,967	1,946	1,920	1,803	2,007	1,782	1,809	1,917	2,213	23,229	22,047	5%
Hana (HNM)	-	-	-	-	-	-	-	-	-	-	-	-	-	-	-
Hilo Int'l (ITO)	1,826	1,458	1,658	1,596	1,628	1,568	1,312	1,179	1,057	1,486	1,519	1,746	18,032	20,746	-13%
Kahului (OGG)	2,434	1,907	2,181	2,321	2,185	2,298	1,992	1,914	1,757	2,591	2,515	2,972	27,067	30,559	-11%
Kalaupapa (LUP)	5	4	7	5	7	6	6	6	6	6	6	4	65	87	-25%
Kapalua (JHM)	17	16	26	84	53	153	173	175	136	104	95	107	1,120	340	230%
Lanai (LNY)	119	127	150	161	155	167	169	183	170	164	167	175	1,908	1,356	41%
Lihue (LIH)	1,381	1,290	1,545	1,547	1,555	1,583	1,729	1,571	1,407	1,066	1,426	1,612	17,713	16,685	6%
Molokai (MKK)	192	174	226	236	227	242	222	220	200	206	222	258	2,623	2,090	25%
Waimea-Kohala (MUE)	-	-	-	-	-	-	-	-	-	-	-	-	-	-	-
International	2,707	2,046	2,633	3,053	3,300	3,084	3,511	4,048	4,349	4,011	4,180	4,681	41,603	32,428	28%
Daniel K. Inouye Int'l (HNL)	2,707	2,046	2,633	3,053	3,300	3,084	3,511	4,048	4,349	4,011	4,180	4,680	41,603	32,046	30%
Ellison Onizuka Kona Int'l (KOA)	-	-	-	-	-	-	-	-	-	-	-	-	382	-	-100%
Kahului (OGG)	-	-	-	-	-	-	-	-	-	-	-	-	0	1	-32%
Grand Total	33,779	29,904	35,794	35,861	36,450	37,297	37,773	37,797	36,486	38,559	40,253	46,259	446,212	378,417	18%

II-B. Monthly Enplaned (Outbound) Air Cargo (Freight & Mail in U.S. Tons) Per Destination Class Per Airport															
Destination/Airport	January	February	March	April	May	June	July	August	September	October	November	December	Grand Total	Prior Year	% Change
Domestic Overseas	8,992	8,472	9,440	10,064	10,359	9,929	10,528	11,315	11,234	11,713	11,594	13,099	126,738	108,486	17%
Daniel K. Inouye Int'l (HNL)	8,375	7,856	8,793	9,471	9,877	9,388	9,935	10,740	10,719	11,146	11,119	12,471	119,890	102,395	17%
Ellison Onizuka Kona Int'l (KOA)	581	578	585	544	425	474	535	533	484	531	424	546	6,241	5,764	8%
Hilo Int'l (ITO)	-	-	-	-	-	0	0	0	0	0	0	0	1	0	314%
Kahului (OGG)	36	37	62	48	55	62	55	40	30	34	49	74	582	303	92%
Lihue (LIH)	-	1	0	1	2	3	2	2	2	1	2	7	22	24	-7%
Interisland	11,052	9,533	11,159	10,940	10,787	11,087	10,115	9,920	9,315	10,726	11,786	13,531	129,949	128,417	1%
Daniel K. Inouye Int'l (HNL)	6,923	5,992	7,076	7,051	6,990	7,121	6,895	6,790	6,152	7,135	7,584	8,847	84,557	85,887	-2%
Ellison Onizuka Kona Int'l (KOA)	692	755	784	723	712	700	613	553	465	378	585	704	7,665	7,377	4%
Hana (HNM)	-	-	-	-	-	-	-	-	-	-	-	-	-	-	-
Hilo Int'l (ITO)	1,313	1,034	1,219	1,101	1,181	1,215	887	810	734	736	934	1,098	12,262	12,175	1%
Kahului (OGG)	1,388	1,094	1,221	1,255	1,139	1,268	1,017	1,042	1,007	1,097	1,118	1,191	13,837	14,549	-5%
Kalaupapa (LUP)	1	1	2	3	3	2	1	2	2	0	2	1	21	27	-24%
Kapalua (JHM)	10	9	10	22	21	23	24	23	24	24	26	30	245	117	110%
Lanai (LNY)	12	11	16	20	17	28	23	29	28	24	26	25	260	107	142%
Lihue (LIH)	681	613	801	723	685	694	616	633	665	1,301	1,478	1,595	10,684	7,901	35%
Molokai (MKK)	31	24	31	41	38	37	39	37	36	30	33	40	418	278	50%
Waimea-Kohala (MUE)	-	-	-	-	-	-	-	-	-	-	-	-	-	-	-
International	3,726	3,066	3,884	3,840	4,247	3,936	4,010	4,369	3,846	3,994	3,865	4,561	47,345	42,797	11%
Daniel K. Inouye Int'l (HNL)	3,717	3,066	3,884	3,840	4,247	3,936	4,010	4,368	3,846	3,994	3,851	4,561	47,321	42,598	11%
Ellison Onizuka Kona Int'l (KOA)	-	-	-	-	-	-	-	-	-	-	-	0	0	195	-100%
Kahului (OGG)	9	-	-	-	-	-	-	1	-	-	14	0	24	5	408%
Grand Total	23,769	21,072	24,483	24,843	25,393	24,952	24,653	25,604	24,395	26,433	27,245	31,191	304,032	279,701	9%

AIR TRAFFIC STATISTICS FOR CALENDAR YEAR 2021

II-C. Monthly Deplaned (Inbound) International Air Cargo (Freight & Mail in U.S. Tons) Per Airport Per Origin

Airport/Origin	January	February	March	April	May	June	July	August	September	October	November	December	Grand Total	Prior Year	% Change
Daniel K. Inouye Int'l (HNL)	2,707	2,046	2,633	3,053	3,300	3,084	3,511	4,048	4,349	4,011	4,180	4,680	41,603	32,046	30%
Australia	-	-	-	-	-	-	-	21	9	2	-	104	136	749	-82%
Canada	-	-	-	-	-	-	-	-	-	-	21	3	25	136	-82%
Europe	-	-	-	-	-	-	-	-	-	-	-	-	-	0	-
Japan	2,284	1,629	640	996	1,141	877	1,312	1,754	2,121	1,918	2,064	1,946	18,681	26,861	-30%
New Zealand	-	-	-	-	-	-	-	-	-	-	-	-	-	328	-100%
Other Asia	343	288	1,903	1,916	1,932	2,012	2,079	2,004	1,927	1,979	1,999	2,547	20,929	3,102	575%
Other Pacific	81	129	90	141	227	195	120	268	292	112	96	80	1,832	871	110%
Elison Onizuka Kona Int'l (KOA)	-	-	-	-	-	-	-	-	-	-	-	-	-	382	-100%
Canada	-	-	-	-	-	-	-	-	-	-	-	-	-	0	-100%
Japan	-	-	-	-	-	-	-	-	-	-	-	-	-	382	-100%
Other Asia	-	-	-	-	-	-	-	-	-	-	-	-	-	-	-
Kahului (OGG)	-	-	-	-	-	-	-	-	-	-	-	-	-	1	-32%
Canada	-	-	-	-	-	-	-	-	-	-	-	-	-	1	-32%
Japan	-	-	-	-	-	-	-	-	-	-	-	-	-	-	-
Other Asia	-	-	-	-	-	-	-	-	-	-	-	-	-	-	-
Lihue (LIH)	-	-	-	-	-	-	-	-	-	-	-	-	-	-	-
Canada	-	-	-	-	-	-	-	-	-	-	-	-	-	-	-
Japan	-	-	-	-	-	-	-	-	-	-	-	-	-	-	-
Other Asia	-	-	-	-	-	-	-	-	-	-	-	-	-	-	-
Other Pacific	-	-	-	-	-	-	-	-	-	-	-	-	-	-	-
Grand Total	2,707	2,046	2,633	3,053	3,300	3,084	3,511	4,048	4,349	4,011	4,180	4,681	41,603	32,428	28%

II-D. Monthly Enplaned (Outbound) International Air Cargo (Freight & Mail in U.S. Tons) Per Airport Per Destination

Airport/Destination	January	February	March	April	May	June	July	August	September	October	November	December	Grand Total	Prior Year	% Change
Daniel K. Inouye Int'l (HNL)	3,717	3,066	3,884	3,840	4,247	3,936	4,010	4,368	3,846	3,994	3,851	4,561	47,321	42,598	11%
Australia	2,159	1,713	2,356	2,256	2,500	2,341	2,373	2,571	2,325	2,513	2,288	2,620	28,014	25,736	9%
Canada	38	-	-	-	-	-	-	25	4	34	21	100	222	173	28%
Europe	-	-	-	-	-	-	-	-	-	-	-	-	-	-	-
Japan	116	129	109	123	102	172	181	119	135	115	221	220	1,742	2,166	-20%
New Zealand	304	246	265	253	315	265	355	311	271	61	268	75	2,989	3,356	-11%
Other Asia	497	390	475	646	838	629	563	603	624	521	522	671	7,178	5,943	21%
Other Pacific	603	589	679	562	493	528	539	539	467	750	532	874	7,176	5,224	37%
Elison Onizuka Kona Int'l (KOA)	-	-	-	-	-	-	-	-	-	-	-	-	-	0	-100%
Canada	-	-	-	-	-	-	-	-	-	-	-	-	-	1	-38%
Japan	-	-	-	-	-	-	-	-	-	-	-	-	-	194	-100%
Other Asia	-	-	-	-	-	-	-	-	-	-	-	-	-	-	-
Kahului (OGG)	9	-	-	-	-	-	-	1	-	-	14	-	24	5	408%
Canada	9	-	-	-	-	-	-	1	-	-	14	-	24	5	408%
Japan	-	-	-	-	-	-	-	-	-	-	-	-	-	-	-
Other Asia	-	-	-	-	-	-	-	-	-	-	-	-	-	-	-
Lihue (LIH)	-	-	-	-	-	-	-	-	-	-	-	-	-	-	-
Canada	-	-	-	-	-	-	-	-	-	-	-	-	-	-	-
Japan	-	-	-	-	-	-	-	-	-	-	-	-	-	-	-
Other Asia	-	-	-	-	-	-	-	-	-	-	-	-	-	-	-
Other Pacific	-	-	-	-	-	-	-	-	-	-	-	-	-	-	-
Grand Total	3,726	3,066	3,884	3,840	4,247	3,936	4,010	4,369	3,846	3,994	3,865	4,561	47,345	42,797	11%

AIR TRAFFIC STATISTICS FOR CALENDAR YEAR 2021

III. Monthly Itinerant Aircraft Operations Per Airport

Airport/Aircraft Class	January	February	March	April	May	June	July	August	September	October	November	December	Grand Total	Prior Year	% Change
Daniel K. Inoué Int'l (HNL)	16,134	15,807	19,405	21,126	22,797	25,816	27,106	27,327	24,843	24,761	24,488	25,161	274,771	186,367	47%
Air Carrier	7,734	6,752	8,486	9,261	10,028	11,630	12,109	12,407	11,479	11,198	11,356	12,633	125,073	96,022	30%
Air Taxi	4,442	5,102	6,577	7,117	7,873	8,623	9,570	9,315	8,100	7,972	7,475	7,717	89,883	44,807	101%
General Aviation	2,941	2,944	3,301	3,705	3,872	4,173	4,309	4,118	4,338	4,338	4,535	3,785	46,039	33,566	37%
Military	1,017	1,109	1,041	1,043	1,024	1,390	1,118	1,487	1,146	1,253	1,122	1,026	13,776	11,972	15%
Ellison Onizuka Kona Int'l (KOA)	3,795	3,707	4,512	5,001	5,025	5,458	5,695	5,830	5,070	5,255	5,541	5,909	60,798	42,273	44%
Air Carrier	1,752	1,604	1,967	2,169	2,385	2,908	3,071	3,164	2,882	2,883	2,819	2,970	30,574	17,408	76%
Air Taxi	705	691	906	962	965	1,038	1,186	1,109	934	1,062	1,133	1,240	11,931	8,325	43%
General Aviation	1,057	1,089	1,352	1,553	1,407	1,338	1,234	1,371	999	1,162	1,421	1,552	15,535	13,540	15%
Military	281	323	287	317	268	174	204	186	255	148	168	147	2,759	3,000	-9%
Hilo Int'l (ITO)	1,666	1,505	1,912	2,361	2,731	3,023	2,938	2,371	2,528	2,796	2,809	2,828	30,002	20,900	44%
Air Carrier	919	792	943	1,110	1,138	1,250	1,188	1,218	1,149	1,087	1,078	1,251	13,123	11,299	16%
Air Taxi	207	231	305	325	553	514	884	1,276	1,052	1,357	1,412	1,261	9,377	5,298	117%
General Aviation	461	390	569	809	917	1,083	750	213	152	256	220	223	6,043	2,849	39%
Military	79	92	95	117	123	176	116	198	175	96	99	83	1,459	1,454	0%
Kahului (OGG)	6,620	6,455	8,581	9,827	10,785	12,443	13,591	12,991	11,149	11,003	11,236	12,092	126,773	62,765	102%
Air Carrier	3,146	2,699	3,531	3,774	4,136	5,118	5,584	5,596	5,040	4,943	5,042	5,472	54,081	26,802	102%
Air Taxi	2,299	2,589	3,806	4,639	5,189	5,936	6,535	6,001	4,899	4,854	4,841	5,250	56,838	25,103	126%
General Aviation	1,066	994	1,128	1,296	1,350	1,277	1,382	1,278	1,074	1,106	1,263	1,233	14,447	9,611	50%
Military	209	173	116	118	110	112	90	116	136	100	90	137	1,407	1,249	13%
Kalaheo (JRF)	2,199	2,168	2,155	2,682	2,766	2,625	2,609	2,557	2,503	2,634	2,529	2,494	29,921	22,690	32%
Air Carrier	-	-	-	-	-	-	-	-	-	-	-	-	-	-	-
Air Taxi	-	-	-	-	-	-	-	-	-	-	-	-	-	-	-
General Aviation	1,648	1,629	1,727	2,074	2,051	2,097	2,151	1,931	1,976	1,978	1,963	1,953	23,178	17,033	36%
Military	551	539	428	608	715	528	458	626	527	656	566	541	6,743	5,644	19%
Kapalua (JHM)	170	170	193	194	279	302	319	307	208	213	178	198	2,731	3,420	-20%
Air Carrier	-	-	-	-	-	-	-	-	-	-	-	-	-	-	-
Air Taxi	170	170	193	194	279	302	319	305	208	210	178	193	2,721	2,878	-100%
General Aviation	-	-	-	-	-	-	-	2	-	3	-	5	10	58	-83%
Military	-	-	-	-	-	-	-	-	-	-	-	-	-	-	-
Lihue (LIH)	1,592	1,874	2,457	4,610	6,283	7,981	8,556	8,730	8,617	7,723	7,894	7,663	73,980	36,519	108%
Air Carrier	635	583	743	1,252	1,583	2,465	2,605	2,801	2,583	2,567	2,441	2,560	22,798	14,015	63%
Air Taxi	563	1,292	1,292	4,189	4,597	5,471	5,465	5,598	4,774	5,020	4,719	4,512	45,812	16,328	181%
General Aviation	264	232	284	374	420	445	361	386	304	310	350	298	4,048	3,553	14%
Military	110	108	138	119	119	124	99	132	132	72	83	86	1,322	1,623	-19%
Molokai (MKK)	1,526	1,568	2,001	1,969	2,188	2,276	2,345	2,367	2,145	2,338	2,469	2,585	25,777	25,649	0%
Air Carrier	-	-	-	-	-	-	-	-	-	-	-	-	-	3	-100%
Air Taxi	1,198	1,273	1,673	1,551	1,851	1,895	2,063	2,007	1,825	2,032	2,129	2,324	21,821	21,413	2%
General Aviation	300	254	311	377	289	362	267	343	280	281	310	245	3,619	3,651	-1%
Military	28	41	17	41	48	19	15	17	40	25	30	16	337	582	-42%
Grand Total	33,702	33,254	41,216	47,770	52,854	59,924	63,159	63,014	57,063	56,723	57,144	58,930	624,753	399,583	56%

III-A. Monthly Local Aircraft Operations Per Airport

Airport/Aircraft Class	January	February	March	April	May	June	July	August	September	October	November	December	Grand Total	Prior Year	% Change
Daniel K. Inoué Int'l (HNL)	-	-	1	1	-	2	5	4	1	-	-	-	14	264	-96%
General Aviation	-	-	-	-	-	2	5	2	-	-	-	-	10	252	-96%
Military	-	-	-	1	-	-	-	2	1	-	-	-	4	12	-67%
Dillingham Field (HDH)	2,256	1,782	2,014	3,440	4,074	2,646	3,000	2,497	2,226	2,756	2,626	2,239	31,556	18,504	71%
Civilian Power	2,040	1,432	1,578	2,396	3,368	2,176	2,302	1,785	1,334	1,698	1,874	1,667	23,892	12,566	90%
Glider	174	156	298	370	242	288	248	202	290	256	290	238	3,252	2,426	34%
Military	42	194	138	472	444	182	450	510	602	602	462	314	4,412	3,512	26%
Ellison Onizuka Kona Int'l (KOA)	3,272	3,317	3,576	4,000	3,073	2,661	2,795	2,389	2,768	2,521	2,764	2,820	35,956	51,565	-30%
General Aviation	3,020	2,959	3,249	3,710	2,789	2,435	2,457	2,098	2,451	2,261	2,528	2,628	32,585	48,287	-33%
Military	252	358	327	290	284	226	338	291	317	260	236	192	3,371	3,278	3%
Hilo Int'l (ITO)	401	430	264	490	499	697	549	834	725	611	518	506	6,524	4,991	31%
General Aviation	274	338	184	381	363	488	417	581	457	521	476	350	4,830	3,384	43%
Military	127	92	80	109	136	209	132	253	268	90	42	156	1,694	1,607	5%
Kahului (OGG)	1,207	1,049	1,348	801	1,320	963	756	715	956	914	837	1,045	11,911	13,842	-14%
General Aviation	1,193	1,027	1,319	799	1,290	939	756	697	948	908	829	1,045	11,750	11,990	-2%
Military	14	22	29	2	90	24	19	16	8	6	8	161	1,852	1,651	-91%
Kalaheo (JRF)	13,227	13,085	12,676	13,463	13,097	13,359	12,267	12,563	13,221	12,086	12,397	10,944	152,385	155,803	-2%
General Aviation	12,305	12,259	11,946	11,960	11,329	12,225	10,855	10,946	11,217	10,570	10,701	9,609	135,922	141,449	-4%
Military	922	826	730	1,503	1,768	1,134	1,412	1,617	2,004	1,516	1,696	1,335	16,463	14,354	15%
Kapalua (JHM)	2	-	-	-	-	-	-	-	-	-	-	-	2	4	-50%
General Aviation	2	-	-	-	-	-	-	-	-	-	-	-	-	-	-
Military	-	-	-	-	-	-	-	-	-	-	-	-	-	2	4
Lihue (LIH)	502	505	371	825	958	934	653	887	1,200	1,030	805	585	9,255	6,491	43%
General Aviation	450	442	337	745	894	880	624	857	1,135	994	789	575	8,722	5,844	49%
Military	52	63	34	80	64	54	29	30	65	36	16	10	533	647	-18%
Molokai (MKK)	97	101	75	96	116	34	62	64	46	47	103	49	890	1,768	-50%
General Aviation	76	71	71	78	76	33	44	58	44	25	103	40	719	1,230	-42%
Military	21	30	4	18	40	1	18	6	2	22					

AIR TRAFFIC STATISTICS FOR CALENDAR YEAR 2021

III-B. Monthly Landings (Arrivals) Per Airport Per Service Type As Reported by Aircraft Operators

Airport/Service Type	January	February	March	April	May	June	July	August	September	October	November	December	Grand Total	Prior Year	% Change	
Daniel K. Inoué Int'l (HNL)	5,458	5,195	6,584	7,281	8,326	9,253	10,126	10,173	9,081	8,947	8,702	9,653	98,779	65,597	51%	
Passenger	3,114	2,868	3,690	4,074	4,544	5,237	5,881	5,927	5,361	5,298	5,232	5,718	56,944	38,231	49%	
Passenger-Charter	56	61	122	157	193	179	227	233	197	175	129	170	1,899	1,065	80%	
Passenger-Government Charter	12	11	13	13	12	18	19	36	13	4	14	17	182	157	16%	
Passenger-Tour Operator	390	581	708	979	1,560	1,740	1,861	1,750	1,288	1,216	1,240	1,413	14,716	5,579	311%	
Cargo	1,203	1,127	1,354	1,250	1,219	1,259	1,387	1,404	1,392	1,378	1,420	1,465	15,858	14,904	6%	
Cargo-Government Charter	8	10	9	17	19	14	11	24	18	25	3	1	159	107	49%	
Ferry Flight	556	438	519	626	674	657	570	647	712	720	460	658	7,237	6,380	13%	
Fuel/Tech Stop	1	1	-	-	-	-	-	-	-	4	6	5	18	2	800%	
Fixed Base Operator	128	98	169	164	105	149	170	152	100	127	198	206	1,766	1,182	49%	
Dillingham Field (HDH)	478	321	433	576	755	621	622	500	451	403	442	357	5,954	2,856	108%	
Passenger-Charter	478	319	433	576	753	621	622	500	451	403	442	357	5,954	2,856	108%	
Passenger-Tour Operator	-	-	-	-	-	-	-	-	-	-	-	-	-	-	-	
Cargo	1	2	-	-	2	-	-	-	-	1	-	-	3	1	200%	
Ferry Flight	-	-	-	-	-	-	-	-	-	-	-	-	-	-	-	
Ellison Onizuka Kona Int'l (KOA)	1,537	1,510	1,840	1,880	2,009	2,391	2,516	2,472	2,095	2,185	2,235	2,467	25,137	14,462	74%	
Passenger	964	911	1,126	1,224	1,372	1,610	1,721	1,713	1,567	1,575	1,564	1,666	17,013	9,819	73%	
Passenger-Charter	15	10	52	77	81	129	171	145	82	91	90	113	1,056	93	1035%	
Passenger-Tour Operator	91	157	167	114	143	179	182	168	126	151	152	172	1,802	577	212%	
Cargo	181	179	213	202	202	207	187	195	183	205	187	214	2,355	2,184	8%	
Ferry Flight	50	82	43	39	44	85	68	40	44	55	37	41	628	623	8%	
Fixed Base Operator	236	171	239	224	167	181	187	211	93	108	205	261	2,283	1,166	96%	
Hana (HNM)	57	60	71	85	81	93	90	79	76	82	75	86	935	601	56%	
Passenger	50	51	59	57	63	66	63	59	58	66	60	58	710	442	61%	
Passenger-Charter	-	-	-	-	-	-	-	-	-	-	-	-	-	-	-	
Passenger-Tour Operator	-	9	12	18	18	27	27	20	18	16	15	28	215	86	150%	
Ferry Flight	-	-	-	-	-	-	-	-	-	-	-	-	-	-	-	
Hilo Int'l (ITO)	659	663	813	931	1,065	1,156	1,165	1,269	1,063	1,110	1,153	1,225	12,172	8,136	50%	
Passenger	305	273	335	427	524	579	586	604	568	540	536	593	5,870	4,111	43%	
Passenger-Charter	2	1	1	1	1	-	2	1	-	2	1	4	16	6	167%	
Passenger-Government Charter	-	-	-	-	-	-	-	-	-	-	-	-	-	-	-	
Passenger-Tour Operator	129	140	218	259	295	358	329	310	202	319	339	339	3,237	1,974	19%	
Cargo	158	153	184	173	176	217	197	200	236	236	250	236	2,344	812	-19%	
Ferry Flight	62	95	71	69	68	35	28	52	90	27	33	30	660	37	22%	
Fixed Base Operator	3	1	4	2	1	4	3	5	3	2	8	9	45	27,107	116%	
Kahului (OGG)	2,932	2,753	3,863	4,502	4,859	5,686	6,432	6,202	5,234	5,251	5,204	5,625	58,543	18,604	97%	
Passenger	2,059	1,882	2,409	2,628	2,944	3,459	3,833	3,739	3,331	3,408	3,367	3,599	36,658	36	-6%	
Passenger-Charter	3	4	3	3	3	4	2	4	2	2	3	2	34	-	-	
Passenger-Tour Operator	361	441	920	1,326	1,420	1,741	2,020	1,854	1,381	1,277	1,296	1,427	15,464	4,031	284%	
Cargo	247	216	253	253	258	262	321	352	392	415	324	318	3,611	2,575	40%	
Ferry Flight	76	68	94	96	80	80	101	100	42	29	36	58	860	1,002	-14%	
Fixed Base Operator	186	142	184	194	153	141	155	153	86	120	179	223	1,916	859	123%	
Kalaheo (JRF)	-	30	24	34	29	45	58	71	52	54	56	90	543	43	1163%	
Passenger	-	-	-	-	-	-	-	-	-	-	-	-	-	-	-	
Passenger-Charter	-	-	-	-	-	3	-	10	2	-	1	2	22	10	990%	
Passenger-Tour Operator	-	30	24	27	15	30	50	53	35	38	39	65	406	33	1130%	
Cargo	-	-	-	-	-	3	-	-	-	1	-	1	6	-	-	
Ferry Flight	-	-	-	7	10	9	8	8	14	15	16	22	109	10	990%	
Kalaupapa (LUP)	78	80	86	77	146	145	130	132	159	150	150	151	1,484	1,251	19%	
Passenger	36	42	54	55	125	122	108	110	138	128	130	128	1,176	450	161%	
Passenger-Charter	-	-	-	-	-	-	-	-	-	-	-	-	-	-	-	
Passenger-Tour Operator	-	-	-	-	-	-	-	-	-	-	-	-	-	141	-100%	
Cargo	42	38	32	22	21	23	22	22	21	22	20	23	308	542	-43%	
Ferry Flight	-	-	-	-	-	-	-	-	-	-	-	-	-	118	-100%	
Kapalua (JHM)	86	84	103	105	147	193	209	209	175	176	160	160	1,807	1,689	7%	
Passenger	50	52	57	61	106	102	114	111	96	104	98	89	1,040	1,072	-3%	
Passenger-Charter	-	-	-	-	-	1	2	2	1	2	1	2	9	3	200%	
Passenger-Tour Operator	-	1	-	-	-	-	-	-	-	-	-	-	1	18	-94%	
Cargo	28	30	42	43	40	89	92	94	75	65	57	67	722	522	38%	
Ferry Flight	8	-	4	1	1	1	3	2	6	3	3	3	35	74	-53%	
Lanai (LNY)	631	728	899	951	943	977	1,076	1,061	904	935	930	970	11,005	5,044	118%	
Passenger	199	226	275	288	307	337	339	332	328	364	349	324	3,668	1,952	88%	
Passenger-Charter	9	9	10	8	12	9	8	12	8	8	10	9	112	563	-80%	
Passenger-Tour Operator	194	275	352	392	413	392	476	446	358	345	358	358	4,360	271	1509%	
Cargo	130	136	152	153	148	150	159	159	157	150	148	176	1,818	1,486	22%	
Ferry Flight	68	62	78	73	44	60	72	80	44	56	40	58	735	694	6%	
Fixed Base Operator	31	20	32	37	19	29	22	32	9	12	24	45	312	78	300%	
Lihue (LIH)	626	701	957	1,946	2,841	3,699	4,057	4,202	3,971	3,897	4,002	3,856	34,755	15,032	131%	
Passenger	284	265	355	627	786	1,171	1,281	1,360	1,270	1,241	1,240	1,310	11,190	6,605	69%	
Passenger-Charter	11	44	73	243	459	426	317	416	440	324	323	236	3,312	755	339%	
Passenger-Tour Operator	27	121	196	750	1,215	1,756	2,131	2,095	1,909	1,923	2,066	1,906	16,095	4,106	292%	
Cargo	200	172	187	170	171	183	210	216	255	257	226	265	2,512	2,360	6%	
Ferry Flight	77	66	81	96	125	107	69	81	68	65	108	92	61	1,031	859	20%
Fixed Base Operator	38	22	65	60	85	56	49	34	29	44	55	78	615	347	77%	
Molokai (MKK)	741	786	970	953	1,070	1,143	1,197	1,131	1,040	1,141	1,107	1,244	12,523	10,066	24%	
Passenger	497	553	695	698	808	916	983	915	831	927	896	987	9,706	5,522	76%	
Passenger-Charter	1	-	-	-	-	-	1	1	1	-	-	4	9	9	0%	
Passenger-Tour Operator	-	-	-	-	-	-	-	-	-	-	-	-	-	4	-100%	
Cargo	192	174	218	202	192	202	187	188	183	191						

AIR TRAFFIC STATISTICS FOR CALENDAR YEAR 2021

III-C. Monthly Landings (Arrivals) of Wide Body (WB) Aircraft at Five (5) Major Airports

Airports	January	February	March	April	May	June	July	August	September	October	November	December	Grand Total	Prior Year	% Change
Daniel K. Inouye Int'l (HNL)	961	843	1,030	1,041	1,179	1,438	1,587	1,571	1,433	1,426	1,420	1,648	15,577	10,587	47%
Elison Onizuka Kona Int'l (KOA)	35	51	57	54	54	110	115	116	116	128	56	80	972	530	83%
Hilo Int'l (ITO)														2	5
Kahului (OGG)	217	210	306	291	351	329	296	283	254	275	249	295	3,356	1,268	165%
Lihue (LIH)	21	20	22	22	20	78	83	81	112	84	58	57	658	265	148%
Grand Total	1,234	1,124	1,415	1,408	1,605	1,955	2,082	2,051	1,915	1,913	1,783	2,080	20,565	12,655	63%

III-D. Monthly Landings (Arrivals) Per Airport Per FAA's Airplane Design Group

Airports/Design Group	January	February	March	April	May	June	July	August	September	October	November	December	Grand Total	Prior Year	% Change
Daniel K. Inouye Int'l (HNL)	5,458	5,195	6,584	7,281	8,326	9,253	10,126	10,173	9,081	8,947	8,702	9,653	98,779	65,597	51%
VI	25	15	24	25	57	13	23	32	22	28	45	30	339	254	33%
V	732	635	796	830	965	1,220	1,313	1,289	1,149	1,205	1,184	1,448	12,766	9,957	28%
IV	633	562	623	628	650	643	643	657	612	584	642	698	7,575	5,558	36%
III	2,464	2,072	2,753	3,195	3,346	3,947	4,122	4,237	3,938	3,789	3,673	4,075	41,611	32,125	30%
II	1,345	1,532	1,886	1,852	1,919	1,874	2,410	2,218	2,287	2,136	2,177	2,455	24,055	14,568	65%
I	259	378	498	751	1,389	1,554	1,612	1,536	1,142	1,053	1,022	1,224	12,418	3,125	297%
Unspecified														15	10
Dillingham Field (HDH)	478	321	433	576	755	621	622	500	451	485	442	357	5,961	2,857	109%
II	472	308	411	560	724	602	597	477	428	381	420	335	5,715	2,745	108%
I	6	13	22	16	31	19	25	23	23	24	22	22	246	112	120%
Elison Onizuka Kona Int'l (KOA)	1,537	1,510	1,840	1,880	2,009	2,391	2,516	2,472	2,095	2,185	2,235	2,467	25,137	14,462	74%
VI															1
V	37	28	35	9	6	52	64	73	62	70	48	74	558	170	228%
IV	89	172	145	142	141	197	198	191	175	218	199	186	1,993	914	118%
III	936	841	1,015	1,124	1,253	1,374	1,449	1,478	1,330	1,315	1,336	1,471	14,922	9,282	61%
II	352	330	420	416	384	445	465	418	320	343	415	450	4,758	3,420	39%
I	123	199	224	189	225	302	340	312	208	239	237	286	2,884	671	330%
Unspecified														22	4
Hana (HNM)	57	60	71	85	81	93	90	79	76	82	75	86	935	601	56%
II	50	51	59	57	63	66	63	59	58	66	60	58	710	515	38%
I	7	9	12	28	18	27	27	20	18	16	15	28	225	86	162%
Hilo Int'l (ITO)	659	663	813	931	1,065	1,156	1,165	1,169	1,063	1,110	1,153	1,225	12,172	8,135	50%
V														2	3
IV			2												3
III	449	405	504	551	573	633	580	599	570	533	536	603	6,536	5,969	9%
II	58	54	59	94	168	133	231	233	259	230	244	253	2,016	457	341%
I	152	204	248	286	323	390	353	337	234	347	371	369	3,614	1,698	113%
Unspecified														1	2
Kahului (OGG)	2,932	2,753	3,863	4,502	4,859	5,686	6,432	6,202	5,234	5,251	5,204	5,625	58,543	27,107	116%
V	126	130	188	192	207	241	279	228	166	213	349	381	2,700	963	180%
IV	244	193	255	309	283	310	267	291	269	268	318	310	3,100	1,073	185%
III	1,408	1,177	1,537	1,728	1,781	2,319	2,516	2,543	2,294	2,253	2,215	2,406	24,177	13,290	82%
II	781	790	938	991	1,130	1,042	1,272	1,255	1,109	1,239	1,124	1,177	12,848	8,555	50%
I	373	457	945	1,348	1,432	1,774	2,076	1,879	1,384	1,287	1,320	1,443	15,718	3,226	387%
Kalaiea (JRF)		30	24	34	29	45	58	71	52	54	56	90	543	43	1163%
II															1
I		30	24	34	29	41	58	71	50	54	51	82	524	42	1148%
Unspecified														19	8
Kalaupapa (LUP)	78	80	86	77	146	145	130	132	159	150	150	151	1,484	1,251	19%
II	78	80	86	77	146	145	130	132	159	150	150	151	1,484	1,251	19%
I															
Kapalua (JHM)	86	84	103	105	147	193	209	209	175	176	160	160	1,807	1,689	7%
III															248
II	86	83	103	105	147	191	209	205	173	173	158	158	1,791	1,416	26%
I														25	16
Lanai (LNY)	631	728	899	951	943	977	1,076	1,061	904	935	930	970	11,005	5,044	118%
III	30	1	6	10	1	2	4	3	2	4	4	9	76	1,122	-93%
II	600	726	893	926	931	970	1,059	1,045	901	931	923	957	10,862	3,900	179%
I	1	1		15	11	5	13	13	1		3	4	67	22	205%
Unspecified															
Lihue (LIH)	626	701	957	1,946	2,841	3,699	4,057	4,202	3,971	3,897	4,002	3,856	34,755	15,032	131%
V														7	1
IV	50	64	69	93	104	161	172	173	180	125	143	148	1,482	894	66%
III	365	313	421	684	831	1,172	1,246	1,313	1,242	1,267	1,253	1,353	11,480	7,309	57%
II	168	141	172	148	169	148	190	188	194	214	187	190	2,109	1,845	14%
I	43	183	294	1,021	1,737	2,215	2,449	2,528	2,352	2,291	2,419	2,164	19,696	4,983	295%
Unspecified														1	
Molokai (MKK)	741	786	970	953	1,070	1,143	1,197	1,131	1,040	1,141	1,107	1,244	12,523	10,066	24%
III	28													28	1,047
II	711	786	970	953	1,069	1,142	1,195	1,128	1,039	1,140	1,107	1,237	12,477	9,003	39%
I	2				1	1	2	3	1	1		7	18	16	13%
Port Allen (PAK)	6	2	5	6	12	14	16	16	3	7	9	5	101	221	-54%
II														27	-100%
I	6	2	5	6	12	14	16	16	3	7	9	5	101	194	-48%
Unspecified														1	-100%
Upolu (UPP)															1
Unspecified															1
Waimea-Kohala (MUE)	69	70	72	89	73	77	100	104	85	81	75	76	971	699	39%
II	57	55	60	62	62	59	62	60	60	66	63	64	730	617	18%
I	12	15	12	27	11	18	38	44	25	15	12	12	241	82	194%
Grand Total	13,358	12,983	16,720	19,416	22,356	25,493	27,794	27,521	24,389	24,421	24,300	25,965	264,716	152,805	73%

- Sources:
 1. Monthly air traffic summary reports submitted by various airline companies/aircraft operators
 2. Monthly airport operations count submitted by FAA tower
 3. Monthly landing fee reports submitted by various airline companies/aircraft operators
 4. FAA's guide on Airplane Design Group and aircraft specifications

Notes:
 - Updated as of rundate 09/17/22.
 - Sums for cargo may slightly differ due to conversion from pounds to tonnage and rounding off