

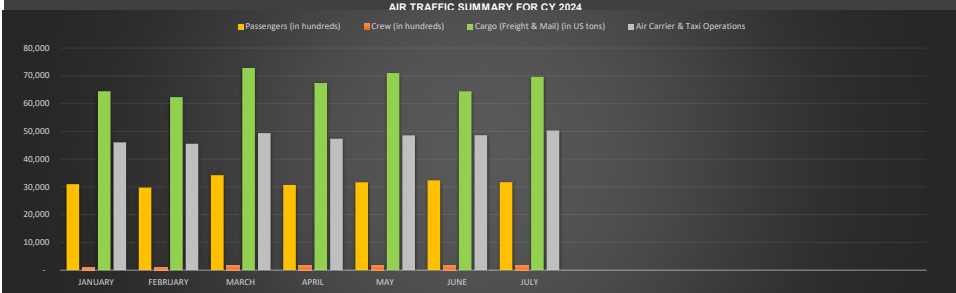
HAWAII DEPARTMENT OF TRANSPORTATION - AIRPORTS DIVISION
AIR TRAFFIC STATISTICS AT A GLANCE

Click on "Year" and "Month" cells to select desired period of statistics:

MONTH	JULY
YEAR	2024

SUMMARY OF AIR TRAFFIC STATISTICS FOR CY 24 AS OF END OF JULY

AIR TRAFFIC TYPE	JANUARY	FEBRUARY	MARCH	APRIL	MAY	JUNE	JULY
Passengers (in hundreds)	30,972	29,745	34,203	30,687	31,663	32,390	31,682
Crew (in hundreds)	811	858	1,726	1,644	1,716	1,665	1,670
Cargo (Freight & Mail) (in US tons)	64,440	62,337	72,841	67,402	71,021	64,418	69,635
Air Carrier & Taxi Operations	46,061	45,529	49,355	47,324	48,580	48,584	50,314
Other Aircraft Class Operations	18,904	34,102	37,707	38,221	40,031	40,098	42,089



AIR TRAFFIC STATISTICS SUMMARY FOR THE CURRENT END MONTH- JULY:

TRAFFIC TYPE	JUL-2024 Current Month	Total YearToDate (YTD)	JUL24-JUL23	JUL24-JUL19	% Change 24YTD - 23YTD	24YTD - 19YTD
Passengers	3,168,216	22,134,199	-15%	-15.5%	-5%	-3%
Cargo (Freight & Mail)	69,635	472,094	11%	5.6%	9%	9.0%
Aircraft Operations	92,403	586,899	1%	-1.8%	-1%	-4%

AIR PASSENGER TRAFFIC PER AIRPORT (EXCLUDING TRANSITS)

TRAFFIC TYPE	JUL-2024 Current Month	Total YearToDate (YTD)	JUL24-JUL23	JUL24-JUL19	% Change 24YTD - 23YTD	24YTD - 19YTD
Daniel K. Inouye Int'l (HNL)	1,760,407	12,467,689	-11%	-14%	1%	-1%
Kahului (OGG)	595,987	4,116,197	-29.1%	-25%	-20%	-13%
Ellison Onizuka Kona Int'l (KOA)	334,461	2,386,630	-20%	-20%	-6%	-1%
Lihue (LIH)	317,314	2,120,948	-12%	-5%	-3%	5%
Hilo Int'l (ITO)	133,377	853,910	3%	16%	1%	17%
Molokai (MKK)	14,066	103,919	-12%	-41%	0.7%	-35%
Lanai (LNY)	10,170	69,044	4%	0%	3%	5%
Kapalua (JHM)	472	3,002	-36%	-93%	-53%	-95%
Kalaupapa (LUP)	854	5,455	36%	-15%	5%	-25%
Waimea-Kohala (MUE)	667	4,587	0%	15.6%	11%	8%
Hana (HNM)*	441	2,815	11%	43%	3%	6%
Kaalaeo (JRF)	-	3	-	-	-	-
Upolu (UPP)	-	-	-	-	-	-

AIR PASSENGER TRAFFIC PER ORIGIN/DESTINATION CLASS (EXCLUDING TRANSITS)

PERIOD	Domestic Overseas		Interisland		International		Grand Total
	Deplaned	Enplaned	Deplaned	Enplaned	Deplaned	Enplaned	
Current - JUL/24	700,944	704,751	715,533	715,533	172,355	159,100	3,168,216
Total YearToDate (YTD)	5,263,291	5,289,289	4,546,113	4,546,113	1,225,429	1,263,964	22,134,199
% Change from last year	-26%	-26%	-5%	-5%	2%	1%	-15%
% Change from 2019 (Pre Pandemic)	-21%	-20%	-1%	-1%	-37%	-39%	-16%
% Change from last YTD	-10%	-10%	-3%	-3%	12%	14%	-5%
% Change from 2019 YTD	2%	1%	6%	6%	-36%	-34%	-3%

AIR CARGO (FREIGHT & MAIL) TRAFFIC PER AIRPORT (EXCLUDING TRANSITS)

AIRPORTS	JUL-2024 Current Month	Total YearToDate (YTD)	JUL24-JUL23	JUL24-JUL19	% Change 24YTD - 23YTD	24YTD - 19YTD
Daniel K. Inouye Int'l (HNL)	65,138	370,288	8%	8%	6%	11%
Kahului (OGG)	4,424	32,884	16%	-12%	24%	-3%
Ellison Onizuka Kona Int'l (KOA)	4,991	33,810	84%	16%	79%	26%
Lihue (LIH)	2,457	17,524	-4%	-3%	-8%	8%
Hilo Int'l (ITO)	1,748	12,354	9%	-36%	3%	-31%
Hana (HNM)*	-	-	-	-	-	-
Kaalaeo (JRF)	-	-	-	-	-	-
Kalaupapa (LUP)	25	104	261%	236%	112%	117%
Kapalua (JHM)	178	1,053	110%	337%	59%	168%
Lanai (LNY)	372	2,160	52%	232%	29%	178%
Molokai (MKK)	302	1,911	34%	180%	15%	156%
Dillingham Field (HDH)	-	-	-	-	-	-
Port Allen (PAK)	-	-	-	-	-	-
Waimea-Kohala (MUE)	-	5	-	-100%	-	-100%

AIR CARGO (FREIGHT & MAIL IN US tons)TRAFFIC PER ORIGIN/DESTINATION CLASS (EXCLUDING TRANSITS)

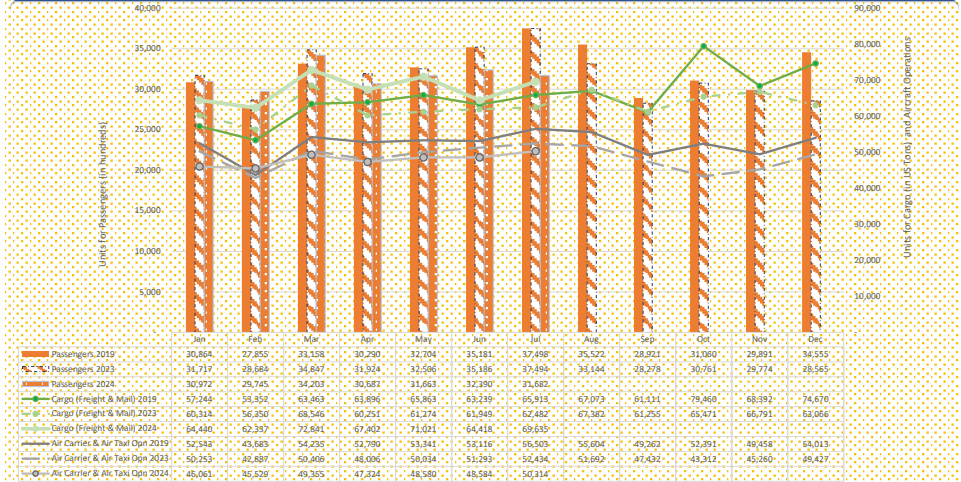
PERIOD	Domestic Overseas		Interisland		International		Grand Total
	Deplaned	Enplaned	Deplaned	Enplaned	Deplaned	Enplaned	
Current - JUL/24	25,353	11,970	10,106	10,106	8,433	3,667	69,635
Total YearToDate (YTD)	171,372	86,937	69,070	69,070	49,812	25,831	472,094
% Change from last year	3%	4%	14%	14%	75%	-3%	0.6%
% Change from 2019 (Pre Pandemic)	21%	3%	-15%	-15%	36%	10%	11%
% Change from last YTD	5%	10%	7%	7%	53%	-3.0%	9%
% Change from 2019 YTD	26%	14%	-12%	-12%	21%	14%	9%

TOTAL AIRCRAFT OPERATIONS (LANDINGS + TAKEOFFS) PER AIRPORT

AIRPORTS	JUL-2024 Current Month	Total YearToDate (YTD)	JUL24-JUL23	JUL24-JUL19	% Change 24YTD - 23YTD	24YTD - 19YTD
Daniel K. Inouye Int'l (HNL)	30,134	182,616	4%	3%	-10%	-11%
Kahului (OGG)	10,639	70,708	-16%	-24%	-17%	-24%
Ellison Onizuka Kona Int'l (KOA)	9,733	57,462	14%	-2%	-11%	-18%
Lihue (LIH)	10,504	70,901	-9%	-13%	-4%	-4%
Hilo Int'l (ITO)	3,392	20,760	-16%	-37%	-19.4%	-43%
Hana (HNM)*	-	-	-	-	-	-
Kaalaeo (JRF)	20,927	112,720	9%	34%	-1%	18%
Kalaupapa (LUP)*	-	-	-	-	-	-
Kapalua (JHM)	199	1,156	-2%	-79%	-19%	-83%
Lanai (LNY)*	-	-	-	-	-	-
Molokai (MKK)	3,036	20,183	9%	-18%	4%	-23%
Dillingham Field (HDH)	3,639	22,439	-1%	16%	4%	5%
Port Allen (PAK)*	-	-	-	-	-	-
Waimea-Kohala (MUE)*	-	-	-	-	-	-

*See Data tables III-B to III-D for landing counts.

Passenger, Cargo (Freight & Mail), & Operations (Air Carrier + Air Taxi)
2019 vs 2023 vs 2024



2022 RANKING OF THE 5 MAJOR AIRPORTS PER AIR TRAFFIC TYPE

CATEGORY/AIRPORTS	RANK		Source
	Worldwide	Country Wide	
1. CY 2022 - Airports Qualified for Cargo Entitlement			
Daniel K. Inouye Int'l (HNL)		16	FAA
Kahului (OGG)		74	
Ellison Onizuka Kona Int'l (KOA)		71	
Lihue (LIH)		86	
Hilo Int'l (ITO)		111	
2. CY 2022 - Commercial Service Revenue Pax Enplanements			
Daniel K. Inouye Int'l (HNL)		31	FAA
Kahului (OGG)		48	
Ellison Onizuka Kona Int'l (KOA)		68	
Lihue (LIH)		74	
Hilo Int'l (ITO)		112	
3. CY 2022 - Air Passengers			
Daniel K. Inouye Int'l (HNL)	94	33	ACI
Kahului (OGG)	200	51	
Ellison Onizuka Kona Int'l (KOA)	342	69	
Lihue (LIH)	395	78	
Hilo Int'l (ITO)	658	119	
4. CY 2022 - Air Cargo (Freight & Mail in Metric Tonnes)			
Daniel K. Inouye Int'l (HNL)	53	15	ACI
Kahului (OGG)	266	77	
Ellison Onizuka Kona Int'l (KOA)	307	87	
Lihue (LIH)	311	89	
Hilo Int'l (ITO)	363	101	
5. CY 2022 - Aircraft Movements			
Daniel K. Inouye Int'l (HNL)	60	38	ACI
Kahului (OGG)	145	70	
Ellison Onizuka Kona Int'l (KOA)	211	79	
Lihue (LIH)	177	93	
Hilo Int'l (ITO)	493	186	

AIR TRAFFIC STATISTICS FOR CALENDAR YEAR 2024

Statewide Monthly Air Traffic Per Origin/Destination (OD) Class (excluding Transits)														Grand Total	Prior Year	% Change
OD Class/Air Traffic Type	January	February	March	April	May	June	July	August	September	October	November	December	Grand Total	Prior Year	% Change	
Domestic Overseas																
Passengers	1,476,609	1,388,086	1,640,043	1,508,606	1,571,044	1,562,497	1,405,695						10,552,580	11,709,853	-9.9%	
Crew	61,422	67,749	62,217	58,387	58,908	56,686	51,530						416,899	476,997	-12.6%	
Cargo (Freight & Mail in US Tons)	35,040	34,542	40,507	37,360	39,766	33,772	37,323						443,286	242,548	6.5%	
Interisland																
Passengers	1,241,536	1,213,424	1,356,504	1,234,742	1,281,038	1,333,916	1,431,066						9,092,226	9,329,358	-2.5%	
Crew	62	58	87,606	86,522	94,216	92,030	97,696						458,190			
Cargo (Freight & Mail in US Tons)	20,748	19,275	19,826	19,347	19,925	18,808	20,212						226,622	129,510	6.7%	
International																
Passengers	379,032	373,004	423,729	325,357	314,226	342,590	331,455						2,489,393	2,196,589	13.3%	
Crew	19,573	18,003	22,806	19,448	18,483	17,779	17,813						133,905	106,455	28.0%	
Cargo (Freight & Mail in US Tons)	8,652	8,521	12,509	10,695	11,329	11,838	12,100						130,535	59,108	120.8%	

Statewide Monthly Aircraft Operations per Aircraft Class per Itinerant/Local as accounted by the Air Traffic Control Tower (ATCT)														Grand Total	Prior Year	% Change
Itinerant/Local/Aircraft Class	January	February	March	April	May	June	July	August	September	October	November	December	Grand Total	Prior Year	% Change	
Itinerant																
Air Carrier	56,134	58,324	62,298	60,718	62,125	62,804	66,105						428,508	430,495	-0.5%	
Air Taxi	25,848	24,606	26,865	25,927	25,929	26,145	27,156						182,476	180,149	1.3%	
General Aviation	20,213	20,923	22,490	21,397	22,651	22,439	23,158						153,271	165,164	-7%	
Military	8,071	10,124	11,064	11,118	11,191	11,957	12,817						76,342	69,695	10%	
Local	2,002	2,671	1,879	2,276	2,354	2,263	2,974						16,419	15,487	6%	
Local Total	8,831	21,307	24,764	24,827	26,486	25,873	26,298						158,391	162,838	-3%	
Civilian Power	2,194	2,084	2,538	2,301	2,625	2,914	2,654						17,310	16,777	3%	
General Aviation	5,516	16,832	19,902	20,247	21,703	20,534	21,383						126,117	132,818	-5%	
Glider	194	380	448	232	442	632	580						2,908	3,258	-11%	
Military	927	2,011	1,876	2,047	1,716	1,798	1,681						12,056	9,985	21%	
Grand Total	64,965	79,631	87,062	85,645	88,611	88,682	92,403						490,872	593,333	-1%	

I. Monthly Enplaned/Deplaned Air Passengers Per Origin/Destination (OD) Class (excluding Transit Passengers)														Grand Total	Prior Year	% Change
OD Class/Deplaned-Enplaned	January	February	March	April	May	June	July	August	September	October	November	December	Grand Total	Prior Year	% Change	
Domestic Overseas																
Deplaned	1,476,609	1,388,086	1,640,043	1,508,606	1,571,044	1,562,497	1,405,695						10,552,580	11,709,853	-10%	
Enplaned	712,685	693,774	831,739	724,345	804,995	794,809	700,944						5,263,291	5,829,567	-10%	
Interisland	1,241,536	1,213,424	1,356,504	1,234,742	1,281,038	1,333,916	1,431,066						9,092,226	9,329,358	-3%	
Deplaned	620,768	606,712	678,252	617,371	640,519	666,958	715,533						4,546,113	4,664,679	-3%	
Enplaned	620,768	606,712	678,252	617,371	640,519	666,958	715,533						4,546,113	4,664,679	-3%	
International	379,032	373,004	423,729	325,357	314,226	342,590	331,455						2,489,393	2,196,589	13%	
Deplaned	189,122	184,818	208,241	163,892	145,284	161,717	172,355						1,225,429	1,092,072	12%	
Enplaned	189,910	188,186	215,488	161,465	168,942	180,873	159,100						1,263,964	1,104,517	14%	
Grand Total	3,097,177	2,974,514	3,420,276	3,068,705	3,166,308	3,239,003	3,168,216						22,134,199	23,235,800	-5%	

I-A. Monthly Deplaned (Inbound) Air Passengers Per Origin Class Per Airport (excluding Transit Passengers)														Grand Total	Prior Year	% Change
Origin Class/Airport	January	February	March	April	May	June	July	August	September	October	November	December	Grand Total	Prior Year	% Change	
Domestic Overseas																
Daniel K. Inouye Int'l (HNL)	418,233	404,104	481,043	431,741	477,806	448,133	397,527						3,058,587	3,121,860	1%	
Ellison Onizuka Kona Int'l (KOA)	83,354	84,248	99,545	80,002	87,009	94,462	76,544						605,164	682,438	-7%	
Hilo Int'l (ITO)	8												8	113	-93%	
Kahului (OGG)	144,746	144,573	180,049	149,405	160,335	178,157	160,149						1,117,414	1,499,842	-23%	
Lihue (LIH)	86,344	80,849	71,102	63,197	79,845	74,057	66,724						482,118	525,314	-5%	
Interisland	620,768	606,712	678,252	617,371	640,519	666,958	715,533						4,546,113	4,664,679	-2%	
Daniel K. Inouye Int'l (HNL)	281,927	274,393	307,037	276,406	286,508	298,184	314,893						2,039,348	2,071,776	-0.9%	
Ellison Onizuka Kona Int'l (KOA)	75,428	72,977	79,055	73,820	77,888	81,395	90,226						550,789	559,872	-1%	
Hana (HNM)	184	186	187	174	245	152	210						1,338	1,370	-3%	
Hilo Int'l (ITO)	57,025	57,392	63,725	58,942	60,272	62,358	67,013						426,727	419,454	1%	
Kahului (OGG)	120,369	112,662	125,463	118,895	118,939	123,270	136,895						856,483	964,277	-11%	
Kalaheo (JRF)																
Kalaupapa (LUP)	447	398	467	457	446	445	489						3,149	3,265	-6%	
Kapalua (JHM)	184	238	100	235	268	304	377						1,706	3,370	-54%	
Lanai (LNY)	3,962	4,687	5,159	4,912	5,593	5,041	5,194						34,528	33,680	2%	
Lihue (LIH)	73,895	76,088	89,040	76,025	82,051	88,027	92,969						577,956	554,365	5%	
Molokai (MKK)	7,051	7,366	7,687	7,193	7,959	7,447	7,037						51,740	51,196	3%	
Upolu (UPP)																
Waimea-Kohala (MUE)	296	345	332	312	350	335	340						2,310	2,034	15%	
International	189,122	184,818	208,241	163,892	145,284	161,717	172,355						1,225,429	1,092,072	14%	
Daniel K. Inouye Int'l (HNL)	162,983	159,739	177,486	148,609	141,026	158,001	167,930						1,116,374	953,073	19%	
Ellison Onizuka Kona Int'l (KOA)	7,848	6,800	9,144	3,003			960						27,581	25,405	11%	
Kahului (OGG)	16,713	16,458	19,352	11,902	4,258	3,116	3,439						75,238	103,841	-24%	
Lihue (LIH)	1,778	1,821	2,259	378									6,236	9,753	-36%	
Grand Total	1,522,575	1,485,304	1,718,232	1,505,608	1,590,798	1,623,484	1,588,832						11,034,833	11,586,318	-2.69%	

AIR TRAFFIC STATISTICS FOR CALENDAR YEAR 2024

I-B. Monthly Enplaned (Outbound) Air Passengers Per Destination Class Per Airport (excluding transit Passengers)

Destination Class/Airport	January	February	March	April	May	June	July	August	September	October	November	December	Grand Total	Prior Year	% Change
Domestic Overseas	763,924	694,312	808,304	784,261	766,049	767,688	704,751						5,289,289	5,880,286	-10%
Daniel K. Inouye Int'l (HNL)	443,697	404,771	470,425	461,151	462,176	436,740	401,416						3,080,376	3,159,778	-3%
Ellison Onizuka Kona Int'l (KOA)	89,493	83,108	96,930	87,948	82,066	89,319	76,485						605,349	676,732	-11%
Hilo Int'l (ITO)	163,990	147,034	173,103	167,525	154,842	170,318	160,181						1,137,393	1,521,326	-25%
Kahului (OGG)	66,744	59,399	67,846	67,237	66,965	71,311	66,669						466,171	522,450	-11%
Lihue (LIH)	620,768	606,712	678,252	617,371	640,519	666,958	715,533						4,546,113	4,664,679	-3%
International	273,357	271,540	303,314	274,385	283,881	295,393	323,348						2,025,218	2,055,931	-1%
Daniel K. Inouye Int'l (HNL)	81,319	76,142	83,639	75,156	79,068	84,838	89,623						569,885	575,947	-1%
Ellison Onizuka Kona Int'l (KOA)	203	151	240	199	271	182	231						1,477	1,354	9%
Hilo Int'l (ITO)	58,755	56,899	62,826	60,090	60,208	62,033	66,364						427,175	423,361	1%
Kahului (OGG)	116,501	112,042	125,779	114,912	121,541	124,691	131,923						847,389	946,093	-10%
Kalaheo (JRF)			3										3		
Kalaupapa (LUP)	319	380	351	332	265	314	365						2,306	1,912	21%
Kapalea (JHM)	203	241	109	209	254	185	95						1,296	3,032	-57%
Lanai (LNY)	3,981	4,642	5,167	4,870	5,850	5,030	4,976						34,516	33,300	3%
Lihue (LIH)	78,629	76,959	88,623	79,494	81,132	86,403	91,052						582,292	569,592	2%
Molokai (MKK)	7,200	7,380	7,906	7,444	7,694	7,526	7,029						52,179	51,973	0%
Upolu (UPP)	301	336	315	280	355	363	327						2,277	2,094	9%
Waimea-Kohala (MUE)	189,910	188,186	215,488	161,465	168,942	180,873	159,100						1,263,964	1,104,517	14%
Daniel K. Inouye Int'l (HNL)	163,300	162,276	185,015	140,371	163,940	177,591	155,293						1,147,786	958,189	20%
Ellison Onizuka Kona Int'l (KOA)	7,207	6,749	9,141	4,268			397						27,762	24,892	12%
Kahului (OGG)	17,631	17,429	19,140	16,386	5,002	3,282	3,410						82,280	111,733	-26%
Lihue (LIH)	1,772	1,732	2,192	440									6,136	9,703	-37%
Grand Total	1,574,602	1,489,210	1,702,044	1,563,097	1,575,510	1,615,519	1,579,384						11,099,366	11,649,462	-5%

I-C. Monthly Deplaned (Inbound) International Air Passengers Per Airport Per Origin (excluding transits)

Airport/Origin	January	February	March	April	May	June	July	August	September	October	November	December	Grand Total	Prior Year	% Change
Daniel K. Inouye Int'l (HNL)	162,983	159,739	177,486	148,609	141,026	158,601	167,930						1,116,374	953,073	17%
Australia	17,767	12,056	13,877	13,560	14,964	17,624	16,415						106,263	116,541	-9%
Canada	24,643	25,356	27,909	18,520	10,487	10,155	10,761						127,831	117,230	9%
Europe															
Japan	72,483	78,885	89,435	73,798	71,738	82,522	100,610						569,471	392,940	45%
New Zealand	2,578	3,936	5,912	3,221	2,931	2,700	3,212						24,490	41,167	-41%
Other Asia	30,149	26,831	23,574	22,853	22,894	25,661	29,617						181,379	171,728	6%
Other Pacific	15,363	12,675	16,779	16,657	18,212	19,539	7,315						106,940	113,467	-6%
Ellison Onizuka Kona Int'l (KOA)	7,648	6,800	9,144	3,003			986						27,581	25,405	9%
Canada	6,617	6,085	6,633	3,003									22,338	22,770	-2%
Japan	1,031	715	2,511				986						5,243	2,635	99%
Other Asia															
Kahului (OGG)	16,713	16,458	19,352	11,902	4,258	3,116	3,439						75,238	103,841	-28%
Canada	16,713	16,458	19,352	11,902	4,258	3,116	3,439						75,238	103,841	-28%
Japan															
Other Asia															
Lihue (LIH)	1,778	1,821	2,259	378									6,236	9,753	-36%
Canada	1,778	1,821	2,259	378									6,236	9,753	-36%
Japan															
Other Asia															
Other Pacific															
Grand Total	189,122	184,818	208,241	163,892	145,284	161,717	172,355						1,225,429	1,092,072	12%

I-D. Monthly Enplaned (Outbound) International Air Passengers Per Airport Per Destination (excluding transits)

Airport/Destination	January	February	March	April	May	June	July	August	September	October	November	December	Grand Total	Prior Year	% Change
Daniel K. Inouye Int'l (HNL)	163,300	162,276	185,015	140,371	163,940	177,591	155,293						1,147,786	958,189	20%
Australia	21,205	14,050	13,029	16,430	17,033	15,110	19,061						115,918	121,440	-5%
Canada	24,139	24,651	28,991	20,064	10,980	10,523	10,651						129,999	119,973	8%
Europe															
Japan	71,521	77,555	97,800	62,300	69,780	101,953	92,876						593,925	392,427	51%
New Zealand	3,756	4,911	4,888	3,460	2,854	2,640	3,464						25,993	40,644	-36%
Other Asia	27,685	28,897	23,450	21,238	25,901	26,943	22,254						176,368	172,631	2%
Other Pacific	14,994	12,212	16,797	16,799	17,392	20,422	6,967						105,583	111,074	-5%
Ellison Onizuka Kona Int'l (KOA)	7,207	6,749	9,141	4,268			397						27,762	24,892	12%
Canada	6,222	6,317	6,730	4,268									23,537	23,120	2%
Japan	985	432	2,411				397						4,225	1,772	138%
Other Asia															
Kahului (OGG)	17,631	17,429	19,140	16,386	5,002	3,282	3,410						82,280	111,733	-26%
Canada	17,631	17,429	19,140	16,386	5,002	3,282	3,410						82,280	111,733	-26%
Japan															
Other Asia															
Lihue (LIH)	1,772	1,732	2,192	440									6,136	9,703	-37%
Canada	1,772	1,732	2,192	440									6,136	9,703	-37%
Japan															
Other Asia															
Other Pacific															
Grand Total	189,910	188,186	215,488	161,465	168,942	180,873	159,100						1,263,964	1,104,517	14%

AIR TRAFFIC STATISTICS FOR CALENDAR YEAR 2024

II. Monthly Deplaned/Enplaned Air Cargo (Freight & Mail in U.S. Tons) Per Origin/Destination (OD) Class

OD/Deplaned-Enplaned	January	February	March	April	May	June	July	August	September	October	November	December	Grand Total	Prior Year	% Change
Domestic Overseas	35,040	34,542	40,507	37,360	39,766	33,772	37,323						258,310	242,648	6.5%
Deplaned	23,225	22,879	26,555	24,191	25,771	23,400	25,353						171,372	163,668	5%
Enplaned	11,815	11,663	13,952	13,169	13,995	10,373	11,970						86,937	78,881	10%
Interisland	20,748	19,275	19,826	19,347	19,525	18,808	20,212						138,149	129,510	7%
Deplaned	10,374	9,637	9,913	9,673	9,963	9,404	10,106						69,070	64,755	7%
Enplaned	10,374	9,637	9,913	9,673	9,563	9,404	10,106						69,070	64,755	7%
International	8,652	8,521	12,509	10,695	11,329	11,838	12,100						75,644	59,108	28%
Deplaned	5,577	5,226	8,225	7,128	7,607	7,616	8,433						49,812	32,485	53%
Enplaned	3,075	3,295	4,284	3,568	3,722	4,221	3,667						25,831	26,623	-3%
Grand Total	64,440	62,337	72,841	67,402	71,021	64,418	69,635						472,094	431,166	9%

II-A. Monthly Deplaned (Inbound) Air Cargo (Freight & Mail in U.S. Tons) Per Origin Class Per Airport

Origin/Airport	January	February	March	April	May	June	July	August	September	October	November	December	Grand Total	Prior Year	% Change
Domestic Overseas	23,225	22,879	26,555	24,191	25,771	23,400	25,353						171,372	163,668	6%
Daniel K. Inouye Int'l (HNL)	20,421	20,117	23,746	21,499	22,890	21,021	22,612						152,506	153,776	-1%
Ellison Onizuka Kona Int'l (KOA)	1,385	1,394	1,432	1,408	1,429	1,253	1,502						9,803	676	1346%
Hilo Int'l (ITO)															
Kahului (OGG)	1,376	1,328	1,341	1,247	1,412	1,081	1,007						8,792	8,973	-2%
Lihue (LIH)	43	39	36	36	40	46	32						272	241	13%
Interisland	10,374	9,637	9,913	9,673	9,963	9,404	10,106						69,070	64,755	7%
Daniel K. Inouye Int'l (HNL)	2,245	2,147	1,989	1,929	2,043	1,840	1,842						14,035	15,949	-11%
Ellison Onizuka Kona Int'l (KOA)	1,860	1,680	1,843	1,645	1,728	1,763	1,831						12,351	12,625	-2%
Hana (HNM)															
Hilo Int'l (ITO)	1,317	1,242	1,237	1,211	1,241	1,152	1,238						8,638	7,377	17%
Kahului (OGG)	2,540	2,318	2,413	2,450	2,497	2,373	2,497						17,088	12,618	35%
Kalaupapa (LUP)	7	6	5	14	14	9	16						71	41	73%
Kapalua (JHM)	96	110	124	146	138	141	157						913	490	86%
Lanai (LNY)	211	173	281	285	291	236	292						1,769	1,373	29%
Lihue (LIH)	1,870	1,746	1,789	1,767	1,782	1,660	1,983						12,598	13,000	-3%
Molokai (MKK)	227	216	230	226	230	230	249						1,607	1,382	16%
Waimea-Kohala (MUE)															
International	5,577	5,226	8,225	7,128	7,607	7,616	8,433						49,812	32,485	53%
Daniel K. Inouye Int'l (HNL)	5,567	5,226	8,210	7,127	7,607	7,616	8,404						49,758	32,435	53%
Ellison Onizuka Kona Int'l (KOA)	10		14	1			29						54	50	7%
Kahului (OGG)	0.06		0	0									0.4	0.1	177%
Grand Total	39,176	37,742	44,693	40,992	43,341	40,420	43,892						290,255	260,908	11.25%

II-B. Monthly Enplaned (Outbound) Air Cargo (Freight & Mail in U.S. Tons) Per Destination Class Per Airport

Destination/Airport	January	February	March	April	May	June	July	August	September	October	November	December	Grand Total	Prior Year	% Change
Domestic Overseas	11,815	11,663	13,952	13,169	13,995	10,373	11,970						86,937	78,881	10%
Daniel K. Inouye Int'l (HNL)	10,469	10,432	12,739	12,300	12,914	9,560	11,091						79,505	73,571	8%
Ellison Onizuka Kona Int'l (KOA)	562	423	578	539	758	553	574						3,986	3,333	20%
Hilo Int'l (ITO)															
Kahului (OGG)	298	352	346	326	318	258	243						2,141	508	321%
Lihue (LIH)	486	457	289	4	4	2	63						1,305	1,469	-11%
Interisland	10,374	9,637	9,913	9,673	9,963	9,404	10,106						69,070	64,755	7%
Daniel K. Inouye Int'l (HNL)	7,169	6,539	7,016	6,844	7,033	6,737	7,332						48,670	48,483	0%
Ellison Onizuka Kona Int'l (KOA)	1,090	1,151	1,124	1,137	1,073	979	1,044						7,599	2,161	252%
Hana (HNM)															
Hilo Int'l (ITO)	589	498	450	484	562	622	510						3,715	4,634	-20%
Kahului (OGG)	719	650	754	668	759	637	677						4,863	4,460	9%
Kalaupapa (LUP)	2	1	2	7	8	3	10						34	8	306%
Kapalua (JHM)	20	18	20	19	23	19	21						141	171	-18%
Lanai (LNY)	42	19	36	67	89	58	80						391	298	31%
Lihue (LIH)	712	731	469	390	365	303	379						3,350	4,263	-21%
Molokai (MKK)	31	30	38	56	50	45	53						303	277	9%
Waimea-Kohala (MUE)		1	5										5		
International	3,075	3,295	4,284	3,568	3,722	4,221	3,667						25,831	26,623	-3%
Daniel K. Inouye Int'l (HNL)	3,069	3,295	4,284	3,568	3,722	4,221	3,656						25,814	26,605	-3%
Ellison Onizuka Kona Int'l (KOA)	6						11						17	17	-1%
Kahului (OGG)	0		0	0									0.31	0	675%
Grand Total	25,264	24,595	28,149	26,411	27,680	23,998	25,743						181,839	170,258	7%

AIR TRAFFIC STATISTICS FOR CALENDAR YEAR 2024

II-C. Monthly Deplaned (Inbound) International Air Cargo (Freight & Mail in U.S. Tons) Per Airport Per Origin

Airport/Origin	January	February	March	April	May	June	July	August	September	October	November	December	Grand Total	Prior Year	% Change
Daniel K. Inouye Int'l (HNL)	5,567	5,226	8,210	7,127	7,607	7,616	8,404						41,354	32,435	53%
Australia	270	354	357	323	663	734	716						2,700	2,557	34%
Canada	8	2	4	1	1	0	0						16	19	-13%
Europe	4,311	3,785	4,133	4,022	4,327	3,659	4,231						24,238	19,524	46%
Japan	39	70	165	10									284	864	-67%
New Zealand	869	947	3,283	2,514	2,305	2,526	3,165						12,444	8,533	83%
Other Asia	70	67	269	257	312	698	292						1,672	938	109%
Other Pacific	10		14	1			29						25	50	7%
Ellison Onizuka Kona Int'l (KOA)	0.03	10	14	0	0	0	29						1.18	24	5%
Canada	0.1		0	0									0.4	0.13	177%
Japan	0.1		0	0									0.4	0.13	177%
Canada	0.1		0	0									0.4	0.13	177%
Grand Total	5,577	5,226	8,225	7,128	7,607	7,616	8,433						41,379	32,485	53%

II-D. Monthly Enplaned (Outbound) International Air Cargo (Freight & Mail in U.S. Tons) Per Airport Per Destination

Airport/Destination	January	February	March	April	May	June	July	August	September	October	November	December	Grand Total	Prior Year	% Change
Daniel K. Inouye Int'l (HNL)	3,069	3,295	4,284	3,568	3,722	4,221	3,656						25,814	26,605	-3%
Australia	1,583	1,803	2,449	2,007	2,002	2,328	2,305						14,476	12,761	13%
Canada	41	30	8	4	16	22	13						134	330	-59%
Europe	210	201	228	167	311	261	232						1,610	3,347	-52%
Japan	205	221	242	167	178	221	202						1,437	1,830	-21%
New Zealand	591	663	415	454	422	376	237						3,157	3,981	-21%
Other Asia	439	376	940	768	793	1,014	667						4,999	4,357	15%
Other Pacific	6						11						17	17	-1%
Ellison Onizuka Kona Int'l (KOA)	6	0	0	0	0	0	11						17	17	-1%
Canada	0.01		0	0									0.31	0	675%
Japan	0.01		0	0									0.31	0	675%
Canada	0.01		0	0									0.31	0	675%
Grand Total	3,075	3,295	4,284	3,568	3,722	4,221	3,667						25,831	26,623	-3%

AIR TRAFFIC STATISTICS FOR CALENDAR YEAR 2024

III. Monthly Itinerant Aircraft Operations Per Airport

Airport/Aircraft Class	January	February	March	April	May	June	July	August	September	October	November	December	Grand Total	Prior Year	% Change
Daniel K. Inouye Int'l (HNL)	26,406	26,616	28,904	27,615	28,367	28,175	30,124						196,207	187,872	4%
Air Carrier	14,081	13,429	14,791	14,094	14,386	14,076	14,780						99,637	92,883	7%
Air Taxi	6,706	7,769	8,069	8,006	8,459	8,031	8,875						55,915	56,587	-1%
General Aviation	4,195	4,039	4,908	4,416	4,408	4,789	4,826						31,581	29,890	6%
Military	1,424	1,379	1,136	1,099	1,114	1,273	1,643						9,074	8,512	7%
Ellison Onizuka Kona Int'l (KOA)	5,384	4,969	5,337	5,347	5,011	5,093	5,253						36,394	37,804	-4%
Air Carrier	2,853	2,657	2,920	2,800	2,807	2,944	3,049						20,030	20,977	-5%
Air Taxi	899	645	790	697	500	506	586						4,623	6,030	-23%
General Aviation	1,453	1,388	1,449	1,641	1,400	1,414	1,373						10,118	9,573	6%
Military	179	279	178	209	304	229	245						1,623	1,224	33%
Hilo Int'l (ITO)	3,070	2,795	2,843	2,764	2,596	2,692	2,804						19,564	20,563	-5%
Air Carrier	1,531	1,445	1,543	1,506	1,491	1,376	1,455						10,347	9,697	7%
Air Taxi	1,055	942	983	898	746	936	838						6,398	8,439	-24%
General Aviation	343	230	208	213	195	236	230						1,655	1,849	-10%
Military	141	178	109	147	164	144	281						1,164	868	34%
Kahului (OGG)	9,025	8,840	9,606	9,376	9,346	9,582	10,010						65,785	78,689	-16%
Air Carrier	4,628	4,426	4,851	4,570	4,434	4,716	4,970						32,595	36,981	-12%
Air Taxi	3,417	3,450	3,877	3,910	4,081	4,026	4,073						26,834	34,200	-22%
General Aviation	922	871	824	831	745	780	822						5,795	7,015	-17%
Military	58	93	54	65	86	60	145						561	493	14%
Kalaheo (JRF)		3,148	2,827	3,581	3,967	4,014	4,643						22,180	20,105	10%
Air Carrier			1										1		
Air Taxi															
General Aviation		2,612	2,569	3,031	3,432	3,593	4,199						19,436	16,677	17%
Military		535	258	550	535	421	444						2,743	3,428	-20%
Kapalua (JHM)	144	184	89	168	192	180	199						1,156	1,426	-19%
Air Carrier															
Air Taxi	140	184	89	168	192	180	199						1,152	1,418	-19%
General Aviation	4												4	3	33%
Military													5	5	-100%
Lihue (LIH)	9,367	9,288	10,030	9,032	9,608	10,160	10,094						67,579	64,852	4%
Air Carrier	2,577	2,428	2,760	2,914	2,693	2,890	2,894						19,156	19,386	-1%
Air Taxi	5,822	6,019	6,344	5,283	6,137	6,453	6,159						42,227	42,461	-1%
General Aviation	823	670	802	660	660	721	890						5,226	2,224	135%
Military	145	171	124	165	118	96	151						970	781	24%
Molokai (MKK)	2,738	2,484	2,662	2,835	3,038	2,908	2,978						19,643	18,894	4%
Air Carrier	178	220	200	43	118	143	8						710	225	216%
Air Taxi	2,174	1,914	2,338	2,425	2,536	2,307	2,428						16,122	16,029	1%
General Aviation	331	314	306	328	351	424	477						2,527	2,454	3%
Military	55	36	20	41	33	34	65						284	176	61%
Grand Total	56,134	58,324	62,298	60,718	62,125	62,804	66,105						428,508	430,495	-0.5%

III-A. Monthly Local Aircraft Operations Per Airport

Airport/Aircraft Class	January	February	March	April	May	June	July	August	September	October	November	December	Grand Total	Prior Year	% Change
Daniel K. Inouye Int'l (HNL)			14	-	-	-	10						27	27	-11%
General Aviation			12	-	-	-	10						26	26	-15%
Military			2	-	-	-							1	1	100%
Dillingham Field (HDH)	2,722	2,818	3,208	2,845	3,283	3,924	3,639						21,609	17,916	4%
Civilian Power	2,194	2,084	2,538	2,301	2,625	2,914	2,654						16,777	13,811	3%
Glider	194	380	448	232	442	632	590						3,258	2,774	-11%
Military	334	354	222	312	216	378	405						1,574	1,330	41%
Ellison Onizuka Kona Int'l (KOA)	3,999	4,958	4,958	5,455	4,345	3,675	4,480						26,870	23,746	19%
General Aviation	3,624	4,492	4,626	5,151	3,987	3,262	4,257						25,563	22,568	15%
Military	375	466	332	304	358	413	223						1,307	1,178	89%
Hilo Int'l (ITO)	758	508	787	773	699	650	568						4,908	4,228	-4%
General Aviation	550	418	735	893	569	602	496						4,199	3,569	-6%
Military	208	90	52	80	100	148	92						709	659	9%
Kahului (OGG)	720	788	492	838	638	618	829						6,377	5,117	-23%
General Aviation	720	788	490	836	634	618	829						6,377	5,117	-23%
Military			2	2	4										
Kalaheo (JRF)		11,759	14,716	14,384	16,844	16,553	16,284						93,856	78,117	-4%
General Aviation		10,668	13,518	13,077	15,832	15,728	15,377						87,596	72,747	-4%
Military		1,091	1,198	1,307	1,012	825	907						6,260	5,370	1%
Kapalua (JHM)															
General Aviation															
Military															
Lihue (LIH)	522	400	529	452	603	356	410						8,685	7,203	-62%
General Aviation	522	394	467	452	603	344	376						8,596	7,118	-63%
Military		6	62	40	-	22	34						89	85	84%
Molokai (MKK)	110	76	60	40	104	92	58						506	388	7%
General Aviation	100	72	54	38	78	80	38						461	353	0%
Military	10	4	6	2	26	12	20						45	35	78%
Grand Total	8,831	21,307	24,764	24,827	26,486	25,878	26,298						162,838	136,741	-2.7%

AIR TRAFFIC STATISTICS FOR CALENDAR YEAR 2024

III-B. Monthly Landings (Arrivals) Per Airport Per Service Type As Reported by Aircraft Operators

Airport/Service Type	January	February	March	April	May	June	July	August	September	October	November	December	Grand Total	Prior Year	% Change
Daniel K. Inoué Int'l (HNL)	9,848	9,847	9,799	9,516	9,510	10,000	10,472						68,992	71,397	-3%
Passenger	6,582	6,273	6,049	5,769	5,861	6,661	6,937						44,132	45,285	-3%
Passenger-Charter	68	80	81	85	95	82	68						559	1,961	-71%
Passenger-Government Charter	14	15	24	15	16	14	18						116	136	-15%
Passenger-Tour Operator	1,164	1,437	1,464	1,368	1,377	1,334	1,330						9,573	11,556	-17%
Cargo	1,343	1,328	1,357	1,420	1,373	1,187	1,379						9,387	8,058	16%
Cargo-Government Charter	1	-	1	4	4	-	7						17	134	-87%
Ferry Flight	504	549	662	657	636	580	493						4,081	2,978	37%
Fuel/Tech Stop	-	-	-	-	-	5	10						15	38	-61%
Fixed Base Operator	172	165	161	168	148	137	161						1,112	1,251	-11%
Dillingham Field (HDH)	454	482	586	437	562	612	627						3,760	3,091	22%
Passenger-Tour Operator	454	482	586	437	562	610	627						3,758	3,090	22%
Cargo	-	-	-	-	-	-	-						-	1	-100%
Ferry Flight	-	-	-	-	-	2	-						2	-	-
Ellison Onizuka Kona Int'l (KOA)	2,195	1,899	1,883	1,769	1,667	1,879	1,976						13,268	15,301	-13%
Passenger	1,564	1,405	1,323	1,242	1,270	1,489	1,516						9,811	11,126	-12%
Passenger-Charter	48	41	60	43	87	88	73						440	544	-19%
Passenger-Tour Operator	114	96	113	112	13	6	10						464	834	-44%
Cargo	201	192	203	208	199	189	206						1,398	1,298	8%
Ferry Flight	39	34	41	24	18	16	14						186	313	-41%
Fixed Base Operator	229	131	143	140	80	91	155						869	1,186	-18%
Hana (HNM)	78	87	91	82	102	89	85						614	607	1%
Passenger	56	59	51	51	64	47	51						379	421	-10%
Passenger-Charter	-	-	-	-	-	-	-						-	1	-
Passenger-Tour Operator	19	19	25	20	28	28	27						166	185	-10%
Ferry Flight	3	9	15	11	10	14	-						69	-	-
Hilo Int'l (ITO)	1,196	1,046	1,129	1,247	1,020	1,076	1,052						7,766	8,888	-13%
Passenger	583	547	575	572	570	547	566						3,970	4,473	-11%
Passenger-Charter	-	-	-	-	-	-	-						-	252	-100%
Passenger-Tour Operator	359	267	320	309	230	331	280						2,096	2,755	-24%
Cargo	191	196	195	174	182	160	173						1,271	963	32%
Ferry Flight	37	32	38	189	35	53	27						391	386	1%
Fixed Base Operator	16	4	1	3	5	6	59						38	59	-36%
Kahului (OGG)	4,254	4,076	4,474	4,598	4,160	4,435	4,333						30,330	38,299	-21%
Passenger	2,966	2,820	2,905	2,765	2,779	2,992	3,024						20,251	24,209	-16%
Passenger-Charter	-	-	-	-	-	-	-						-	227	-100%
Passenger-Government Charter	-	-	-	-	-	-	-						-	-	-
Passenger-Tour Operator	728	734	980	937	903	1,011	834						6,127	10,165	-40%
Cargo	333	317	396	331	329	293	328						2,327	2,019	15%
Ferry Flight	34	81	86	444	63	46	32						786	644	22%
Fixed Base Operator	193	124	107	121	86	93	115						839	1,035	-19%
Kalaheo (JRF)	28	18	22	10	-	1	-						79	129	-39%
Passenger-Charter	-	-	-	-	-	-	-						-	-	-
Passenger-Tour Operator	28	18	22	10	-	-	-						78	89	-12%
Cargo	-	-	-	-	-	-	-						-	1	-100%
Ferry Flight	-	-	-	-	-	1	-						1	39	-97%
Kalaupapa (LUP)	133	126	131	133	136	134	126						919	926	-1%
Passenger	110	83	93	90	93	103	94						666	773	-14%
Passenger-Charter	-	-	-	-	-	-	-						-	1	-
Passenger-Tour Operator	3	3	20	-	1	-	26						1	85	-69%
Cargo	21	21	-	24	21	13	20						120	67	79%
Ferry Flight	2	19	18	18	21	18	11						107	-	-
Kapalua (JHM)	105	114	94	128	130	138	140						849	885	-4%
Passenger	36	41	16	38	47	53	48						279	498	-44%
Passenger-Charter	-	-	-	-	-	-	-						-	2	-100%
Passenger-Tour Operator	-	-	-	-	-	-	-						-	-	-
Cargo	69	71	77	89	83	85	91						565	375	51%
Ferry Flight	-	2	1	1	-	-	1						5	10	-50%
Lanai (LNY)	914	1,046	1,190	1,096	1,278	1,060	1,044						7,628	7,109	7%
Passenger	316	361	414	381	418	371	332						2,593	2,919	-11%
Passenger-Charter	-	-	-	-	-	-	-						-	163	-100%
Passenger-Tour Operator	272	357	420	384	426	391	469						2,719	2,835	-4%
Cargo	162	162	164	165	228	149	193						1,223	673	82%
Ferry Flight	146	155	171	160	200	140	37						1,009	430	135%
Fixed Base Operator	18	11	21	6	6	9	13						84	89	-6%
Lihue (LIH)	4,318	4,365	4,569	4,361	4,433	4,878	4,373						31,017	32,420	-4%
Passenger	1,329	1,221	1,248	1,207	1,213	1,379	1,441						9,038	9,538	-5%
Passenger-Charter	335	397	353	369	448	368	291						2,561	2,827	-9%
Passenger-Tour Operator	2,287	2,397	2,607	2,244	2,430	2,505	2,289						16,759	17,420	-4%
Cargo	236	220	232	243	222	217	219						1,589	1,557	2%
Ferry Flight	63	101	84	245	91	61	98						743	730	2%
Fixed Base Operator	68	49	45	53	29	45	35						327	348	-6%
Molokai (MKK)	1,065	1,121	1,277	1,243	1,247	1,106	1,088						8,147	8,061	1%
Passenger	842	876	1,003	954	987	904	850						6,416	6,491	-1%
Passenger-Charter	-	-	-	-	-	-	-						-	138	-100%
Passenger-Tour Operator	6	5	3	9	5	-	11						39	562	-93%
Cargo	202	193	203	220	217	160	219						1,414	744	90%
Ferry Flight	15	47	68	60	38	42	8						276	126	121%
Port Allen (PAK)	13	17	9	13	14	10	5						81	78	4%
Passenger-Tour Operator	4	4	1	6	3	3	4						25	66	-62%
Cargo	-	-	-	-	-	1	1						2	-	-
Ferry Flight	9	13	8	7	11	6	-						54	12	350%
Upolu (UPP)	-	-	-	-	-	-	-						-	1	-100%
Passenger-Charter	-	-	-	-	-	-	-						-	-	-
Ferry Flight	-	-	-	-	-	-	-						-	-	-
Waimea-Kohala (MUE)	54	59	56	55	59	57	52						392	537	-27%
Passenger	49	55	54	52	54	53	51						368	396	-7%
Passenger-Charter	-	-	-	-	-	-	-						-	137	-100%
Passenger-Tour Operator	4	2	1	2	-	-	-						9	4	125%
Cargo	-	-	1	-	-	-	-						1	-	-
Ferry Flight	1	2	-	1	5	4	1						14	-	-
Grand Total	24,655	24,323	25,310	24,688	24,318	25,175	25,373								

AIR TRAFFIC STATISTICS FOR CALENDAR YEAR 2024

III-C. Monthly Landings (Arrivals) of Wide Body (WB) Aircraft at Five (5) Major Airports														Grand Total	Prior Year	% Change
Airports	January	February	March	April	May	June	July	August	September	October	November	December				
Daniel K. Inouye Int'l (HNL)	1,709	1,601	1,433	1,360	1,418	1,597	1,626						10,744	11,571	-7%	
Elison Onizuka Kona Int'l (KOA)	124	57	72	53	66	85	92						549	732	-25%	
Hilo Int'l (ITO)	3		3	11			1						16	4	300%	
Kahului (OGG)	216	204	303	191	181	121	189						1,405	1,974	-29%	
Lihue (LIH)	52	50	53	51	51	50	51						358	374	-4%	
Grand Total	2,102	1,912	1,864	1,666	1,716	1,853	1,959						13,072	14,655	-11%	

III-D. Monthly Landings (Arrivals) Per Airport Per FAA's Airplane Design Group														Grand Total	Prior Year	% Change
Airports/Design Group	January	February	March	April	May	June	July	August	September	October	November	December				
Daniel K. Inouye Int'l (HNL)	9,848	9,847	9,799	9,516	9,510	10,000	10,472						68,992	71,397	-3%	
VI	93	71	63	60	87	70	90						534	320	67%	
V	1,637	1,554	1,391	1,290	1,253	1,609	1,739						10,433	10,902	-3%	
IV	673	586	538	532	549	629	535						4,042	4,139	-2%	
III	4,699	4,469	4,450	4,334	4,365	4,721	5,000						32,038	31,400	2%	
II	1,773	1,982	2,183	2,126	2,240	1,928	2,011						14,243	14,525	-2%	
I	973	1,185	1,174	1,214	1,016	1,043	1,097						7,702	10,211	-25%	
Dillingham Field (HDH)	454	482	586	437	562	612	627						3,760	3,091	22%	
II	423	425	516	401	513	560	568						3,406	2,687	27%	
I	31	57	70	36	49	52	59						354	404	-12%	
Elison Onizuka Kona Int'l (KOA)	2,195	1,899	1,883	1,769	1,667	1,769	1,976						13,268	15,301	-13%	
VI														9		
V	124	58	76	53	65	84	87						547	330	66%	
IV	81	61	89	90	95	88	95						599	730	-18%	
III	1,509	1,421	1,331	1,237	1,254	1,440	1,506						9,698	10,791	-10%	
II	308	212	217	229	162	171	156						1,455	1,981	-27%	
I	173	147	170	160	91	96	132						969	1,460	-34%	
Hana (HNM)	78	87	91	82	102	89	85						614	607	1%	
II	59	68	66	62	74	61	58						448	421	6%	
I	19	19	25	20	28	28	27						166	186	-11%	
Hilo Int'l (ITO)	1,196	1,046	1,129	1,247	1,020	1,076	1,052						7,766	8,888	-13%	
V			3	11									14	3	367%	
IV													2	1	100%	
III	772	729	753	684	735	704	728						5,305	4,941	7%	
II	32	18	16	13	17	8	10						114	693	-84%	
I	391	299	357	339	268	364	313						2,331	3,250	-28%	
Kahului (OGG)	4,254	4,076	4,474	4,598	4,160	4,435	4,333						30,330	38,239	-21%	
V	202	187	199	170	163	162	165						1,249	1,741	-28%	
IV	84	79	165	66	62	59	58						573	636	-10%	
III	2,307	2,189	2,220	2,487	2,069	2,305	2,461						16,038	18,459	-13%	
II	914	865	867	909	940	879	798						6,172	7,034	-12%	
I	747	756	1,023	966	926	1,030	850						6,298	10,429	-40%	
Kalaheo (JRF)	28	18	22	10	-	1	-						79	129	-39%	
II	-	-	-	-	-	1	-						1	129	-40%	
I	28	18	22	10	-	-	-						78	129	-40%	
Kalaupapa (LUP)	133	126	131	133	136	134	126						919	926	-1%	
II	133	126	131	133	136	134	126						919	925	-1%	
I	-	-	-	-	-	-	-						1	1		
Kapalua (JHM)	105	114	94	128	130	138	140						849	885	-4%	
III	-	-	-	-	-	-	-						-	-		
II	105	114	94	128	130	138	140						849	881	-4%	
I	-	-	-	-	-	-	-						-	4	-100%	
Lanai (LNY)	914	1,046	1,190	1,096	1,278	1,060	1,044						7,628	7,109	7%	
III	24	34	32	21	35	30	31						207	165	25%	
II	869	994	1,122	1,044	1,222	1,016	996						7,263	6,864	6%	
I	21	18	36	31	21	14	17						158	80	98%	
Lihue (LIH)	4,318	4,385	4,569	4,361	4,433	4,578	4,373						31,017	32,420	-4%	
V	2	1	3	1	-	1	-						8	22	-64%	
IV	85	82	96	80	82	79	81						575	568	1%	
III	1,418	1,283	1,318	1,507	1,278	1,454	1,508						9,766	10,096	-3%	
II	165	182	174	126	152	137	161						1,097	1,321	-17%	
I	2,648	2,837	2,988	2,647	2,921	2,907	2,623						19,571	20,413	-4%	
Molokai (MKK)	1,065	1,121	1,277	1,243	1,247	1,106	1,088						8,147	8,061	1%	
III	-	-	-	-	-	-	-						-	-		
II	1,060	1,118	1,272	1,238	1,245	1,102	1,086						8,121	7,916	3%	
I	5	3	5	5	2	4	2						26	145	-82%	
Port Allen (PAK)	13	17	9	13	14	10	5						81	78	4%	
I	13	17	9	13	14	10	5						81	78	4%	
Upolu (UPP)	-	-	-	-	-	-	-						-	1	-100%	
II	-	-	-	-	-	-	-						-	1	-100%	
Waimea-Kohala (MUE)	54	59	56	55	59	57	52						392	537	-27%	
II	50	57	54	53	59	57	52						382	396	-4%	
I	4	2	2	2	-	-	-						10	141	-93%	
Grand Total	24,655	24,323	25,310	24,688	24,318	25,175	25,373						173,842	187,729	-7%	

- Sources:
1. Monthly air traffic summary reports submitted by various airline companies/aircraft operators
 2. Monthly airport operations count submitted by FAA tower
 3. Monthly landing fee reports submitted by various airline companies/aircraft operators
 4. FAA's guide on Airplane Design Group and aircraft specifications

- Notes:
- Rurdate 08/20/2024
 - Totals for cargo may slightly differ due to conversion from pounds to tonnage and rounding off
 - Cargo includes in-transit cargo.
 - Passengers from diverted flights are not included.
 - Required crew counts regardless of the type of flight service has been reinforced starting March 2024.
 - Data from March 2024 and onwards are preliminary.

AIR TRAFFIC STATISTICS FOR CALENDAR YEAR 2023

Statewide Monthly Air Traffic Per Origin/Destination (OD) Class (excluding Transits)															
OD Class/Air Traffic Type	January	February	March	April	May	June	July	August	September	October	November	December	Grand Total	Prior Year	% Change
Domestic Overseas															
Passengers	1,572,468	1,414,710	1,740,272	1,639,195	1,646,923	1,788,365	1,907,920	1,606,686	1,312,670	1,460,033	1,398,344	1,196,197	18,683,783	19,474,229	-4.06%
Crew	69,888	62,448	72,439	65,899	66,008	68,514	71,801	68,491	58,003	60,231	60,850	53,154	777,726	861,995	-10%
Caro (Freight & Mail in US Tons)	33,490	31,879	38,635	33,441	34,284	34,458	36,162	38,221	35,226	37,574	37,950	32,480	423,999	430,760	-1.6%
Interisland	1,263,510	1,165,828	1,385,512	1,258,534	1,326,300	1,415,714	1,513,960	1,359,616	1,209,542	1,296,536	1,214,586	1,273,704	15,683,342	14,554,041	8%
Passengers	1,263,510	1,165,828	1,385,512	1,258,534	1,326,300	1,415,714	1,513,960	1,359,616	1,209,542	1,296,536	1,214,586	1,273,704	15,683,342	14,554,041	8%
Caro (Freight & Mail in US Tons)	19,586	16,866	19,675	18,459	18,563	18,653	17,707	20,366	17,146	18,341	19,746	20,901	226,008	236,631	-4%
International															
Passengers	335,745	287,911	358,965	294,638	277,358	314,497	327,475	348,089	305,582	319,562	364,477	386,605	3,920,904	2,244,555	75%
Crew	16,244	14,134	15,398	14,892	14,887	14,887	16,293	17,621	15,780	16,450	17,375	18,235	191,516	131,483	46%
Caro (Freight & Mail in US Tons)	7,238	7,606	10,035	8,350	8,427	8,638	8,613	8,795	8,983	9,557	9,095	9,685	105,123	108,442	-3.06%

Statewide Monthly Aircraft Operations per Aircraft Class per Itinerant/Local as accounted by the Air Traffic Control Tower (ATCT)															
Itinerant-Local/Aircraft Class	January	February	March	April	May	June	July	August	September	October	November	December	Grand Total	Prior Year	% Change
Itinerant															
Air Carrier	25,747	23,222	26,409	25,327	25,608	26,333	27,503	27,884	25,318	25,867	25,687	27,176	312,061	286,851	9%
Air Taxi	24,506	19,665	23,997	22,679	24,426	24,960	24,931	23,828	22,114	17,445	19,573	22,251	270,375	300,734	-10%
General Aviation	10,046	7,043	9,636	10,086	10,648	11,302	10,934	12,672	10,928	7,869	10,993	9,740	121,897	120,491	1%
Military	2,251	2,072	2,169	2,231	1,990	2,437	2,337	2,396	2,503	2,132	2,619	1,706	26,843	30,592	-12%
Local	23,311	16,910	22,755	22,366	24,778	26,621	26,097	26,830	26,851	25,358	22,326	23,417	287,620	255,554	13%
Civilian Power	1,980	1,596	2,254	2,254	2,025	3,102	2,968	2,827	3,012	2,350	1,670	2,406	29,042	25,808	13%
General Aviation	18,990	13,637	18,745	18,196	20,448	21,482	21,320	21,621	21,158	21,211	18,492	18,793	234,093	201,414	16%
Glider	446	520	366	366	442	634	484	546	444	220	272	402	5,142	4,081	26%
Military	1,895	1,157	1,390	1,550	1,263	1,403	1,327	1,836	2,237	1,577	1,892	1,816	19,343	24,251	-20%
Grand Total	85,861	68,912	84,966	82,689	87,450	91,653	91,802	93,590	87,714	78,671	81,198	84,290	1,018,796	994,222	2%

I. Monthly Enplaned/Deplaned Air Passengers Per Origin/Destination (OD) Class (excluding Transit Passengers)															
OD Class/Deplaned-Enplaned	January	February	March	April	May	June	July	August	September	October	November	December	Grand Total	Prior Year	% Change
Domestic Overseas															
Deplaned	763,454	712,384	876,131	788,105	827,268	908,934	953,291	756,406	650,019	729,920	701,632	624,975	9,292,519	9,722,442	-4%
Enplaned	609,014	702,326	864,141	851,090	819,655	879,431	954,629	850,280	662,651	730,113	696,712	571,222	9,391,264	9,751,787	-4%
Interisland	1,263,510	1,165,828	1,385,512	1,258,534	1,326,300	1,415,714	1,513,960	1,359,616	1,209,542	1,296,536	1,214,586	1,273,704	15,683,342	14,554,041	8%
Deplaned	631,755	582,914	692,756	629,267	663,150	707,857	756,980	679,808	604,771	648,268	607,293	636,852	7,841,671	7,276,834	8%
Enplaned	631,755	582,914	692,756	629,267	663,150	707,857	756,980	679,808	604,771	648,268	607,293	636,852	7,841,671	7,277,207	8%
International	335,745	287,911	358,965	294,638	277,358	314,497	327,475	348,089	305,582	319,562	364,477	386,605	3,920,904	2,244,555	75%
Deplaned	168,144	142,533	178,178	148,195	131,486	154,178	169,358	184,102	152,016	158,235	183,768	196,734	1,966,927	1,130,791	74%
Enplaned	167,601	145,378	180,787	146,443	145,872	160,319	158,117	163,987	153,566	161,327	180,709	189,871	1,953,977	1,113,764	75%
Grand Total	3,174,723	2,868,449	3,484,749	3,192,367	3,290,961	3,616,976	3,748,355	3,314,391	2,827,794	3,076,131	2,977,407	2,856,506	38,288,029	36,272,625	6%

I-A. Monthly Deplaned (Inbound) Air Passengers Per Origin Class Per Airport (excluding Transit Passengers)															
Origin Class/Airport	January	February	March	April	May	June	July	August	September	October	November	December	Grand Total	Prior Year	% Change
Domestic Overseas															
Daniel K. Inouye Int'l (HNL)	423,034	394,354	460,704	425,577	447,696	472,094	498,221	459,544	409,771	442,848	421,789	357,187	5,212,969	5,034,051	4%
Ellison Onizuka Kona Int'l (KOA)	89,693	81,631	103,734	87,740	93,072	111,810	114,758	102,208	82,080	93,162	83,829	69,720	1,113,437	1,123,691	-1%
Hilo Int'l (ITO)						113		125					238	40,915	-99%
Kahului (OGG)	186,383	177,553	233,189	201,020	209,477	240,021	252,199	113,176	93,657	129,254	136,148	141,631	2,113,708	2,592,735	-18%
Lihue (LIH)	64,944	58,846	78,504	73,589	77,023	84,896	88,113	81,353	64,511	64,656	59,866	56,437	852,137	931,050	-8%
Interisland	631,755	582,914	692,756	629,267	663,150	707,857	756,980	679,808	604,771	648,268	607,293	636,852	7,841,671	7,276,834	8%
Daniel K. Inouye Int'l (HNL)	282,867	259,121	311,587	276,436	294,165	315,162	332,438	301,485	266,225	287,060	273,661	283,566	3,483,793	3,185,605	9%
Ellison Onizuka Kona Int'l (KOA)	74,304	68,897	81,964	74,894	79,566	86,944	93,303	87,117	77,876	78,516	73,125	79,730	956,236	928,359	3%
Hana (HNM)	168	178	224	200	184	207	209	136	164	180	180	226	2,256	2,348	-4%
Hilo Int'l (ITO)	59,800	54,523	61,958	56,406	58,051	63,703	65,013	59,287	54,489	60,416	57,756	62,351	713,753	629,640	13%
Kahului (OGG)	127,361	116,866	142,066	133,554	139,717	145,418	159,275	131,026	114,139	124,724	112,988	118,206	1,565,360	1,505,208	4%
Kalaheo (JRF)															
Kalaupapa (LUP)	618	522	434	389	407	462	433	419	357	432	407	383	5,263	7,334	-28%
Kapalua (JHM)	778	574	406	473	379	286	474	229	144	110	151	253	4,257	8,187	-48%
Lanai (LNY)	4,929	4,212	4,935	4,879	5,017	4,769	4,939	5,078	3,404	5,297	4,611	4,188	56,258	56,231	0%
Lihue (LIH)	72,995	70,878	81,252	75,090	78,506	83,094	92,570	88,075	81,290	84,143	77,689	80,237	965,819	857,296	13%
Mokaa (MRK)	7,667	6,913	7,626	6,646	6,837	7,508	7,999	6,671	6,386	7,046	6,428	7,335	85,062	92,546	-8%
Upolu (UPP)															
Waimea-Kohala (MUE)	268	230	284	300	321	304	327	285	297	324	297	377	3,614	4,081	-11%
International	168,144	142,533	178,178	148,195	131,486	154,178	169,358	184,102	152,016	158,235	183,768	196,734	1,966,927	1,130,791	74%
Daniel K. Inouye Int'l (HNL)	137,636	113,573	142,913	129,556	124,804	146,454	158,137	177,782	149,011	150,988	158,483	168,005	1,757,342	938,821	87%
Ellison Onizuka Kona Int'l (KOA)	7,284	6,322	7,539	2,913			1,347	2,453		845	7,540	8,489	44,732	28,393	58%
Kahului (OGG)	20,066	19,863	24,803	14,829	6,682	7,724	9,674	3,867	3,005	6,082	15,236	17,446	149,477	148,303	1%
Lihue (LIH)	3,158	2,775	2,923	897						320	2,509	2,794	15,376	15,274	1%
Grand Total	1,563,353	1,437,831	1,747,065	1,565,567	1,621,904	1,770,969	1,879,629	1,620,316	1,406,806	1,536,423	1,492,693	1,458,561	19,101,117	18,130,067	6%

AIR TRAFFIC STATISTICS FOR CALENDAR YEAR 2023

I-B. Monthly Enplaned (Outbound) Air Passengers Per Destination Class Per Airport (excluding transit Passengers)

Destination Class/Airport	January	February	March	April	May	June	July	August	September	October	November	December	Grand Total	Prior Year	% Change
Domestic Overseas	809,014	702,326	864,141	851,090	819,655	879,431	954,629	850,280	662,651	730,113	696,712	571,222	9,391,264	9,751,787	-4%
Daniel K. Inouye Int'l (HNL)	446,356	387,498	463,145	451,200	447,238	464,126	500,215	487,700	421,032	444,046	424,021	339,495	5,276,072	5,082,633	4%
Ellison Onizuka Kona Int'l (KOA)	88,114	80,683	100,560	97,624	90,932	104,743	114,076	109,992	83,114	93,270	81,260	62,460	1,106,828	1,120,851	-1%
Hilo Int'l (ITO)	-	-	-	-	-	-	-	-	-	-	-	-	-	39,763	-100%
Kahului (OGG)	205,438	177,273	225,968	222,768	207,037	229,836	253,006	167,920	94,033	127,839	133,288	121,089	2,165,495	2,580,859	-16%
Lihue (LIH)	69,106	56,872	74,468	79,498	74,448	80,726	87,332	84,668	64,472	64,958	58,143	48,178	842,869	927,681	-9%
Interisland	631,755	582,914	692,756	629,267	663,150	707,857	756,980	679,808	604,771	648,268	607,293	636,852	7,841,671	7,277,207	8%
Daniel K. Inouye Int'l (HNL)	276,914	257,039	302,383	280,693	294,124	310,254	334,524	304,660	269,588	288,678	270,980	288,118	3,477,955	3,180,821	9%
Ellison Onizuka Kona Int'l (KOA)	79,451	71,776	86,711	79,327	79,220	90,256	92,606	85,916	78,887	80,228	74,868	78,131	973,977	906,627	7%
Hana (HNM)	162	175	243	205	201	179	189	107	134	134	148	181	2,058	5,524	-63%
Hilo Int'l (ITO)	61,459	53,822	63,248	56,517	59,583	63,794	64,938	59,116	55,126	58,974	57,364	58,830	712,771	618,604	15%
Kahului (OGG)	123,658	114,687	142,898	126,136	137,010	145,153	156,551	125,077	106,942	120,088	112,529	122,501	1,533,230	1,493,577	3%
Kalaheo (JRF)	-	-	-	-	-	-	-	-	-	-	-	-	-	-	-
Kalaupapa (LUP)	437	360	319	223	190	188	195	260	192	192	285	253	3,094	5,814	-47%
Kapuluu (JHM)	774	567	399	427	298	309	258	289	132	137	160	247	4,017	7,634	-47%
Lanai (LNY)	4,781	4,252	5,006	4,962	4,713	4,864	4,812	5,361	3,565	5,043	4,613	3,914	55,886	52,843	6%
Lihue (LIH)	75,922	73,059	83,529	76,649	80,714	85,109	94,610	91,706	83,423	87,450	79,786	77,429	989,386	908,290	9%
Molokai (MKK)	7,912	6,943	7,706	7,221	6,801	7,434	7,956	7,018	6,468	7,011	6,266	6,895	85,631	93,162	-8%
Upolu (UPP)	285	234	314	307	296	317	341	298	314	333	274	353	3,666	4,311	-15%
Waimea-Kohala (MUE)	167,601	145,378	180,787	146,443	145,872	160,319	158,117	163,987	153,566	161,327	180,709	189,871	1,953,977	1,113,764	75%
Daniel K. Inouye Int'l (HNL)	136,453	116,724	145,159	121,551	138,578	151,792	147,932	156,035	150,864	156,254	159,205	166,080	1,746,627	924,113	89%
Ellison Onizuka Kona Int'l (KOA)	6,642	6,146	7,623	3,730	3,790	4,431	751	2,064	310	6,090	7,217	40,573	26,995	26,995	55%
Kahului (OGG)	21,515	19,716	25,266	19,981	7,294	8,527	9,434	5,888	2,702	4,667	13,429	14,169	152,588	149,055	2%
Lihue (LIH)	2,991	2,792	2,739	1,181	-	-	-	-	-	96	1,985	2,405	14,189	14,501	-2%
Grand Total	1,608,370	1,430,618	1,737,664	1,626,800	1,628,677	1,747,607	1,869,726	1,694,075	1,420,988	1,539,708	1,484,714	1,397,945	19,186,912	18,142,758	6%

I-C. Monthly Deplaned (Inbound) International Air Passengers Per Airport Per Origin (excluding transits)

Airport/Origin	January	February	March	April	May	June	July	August	September	October	November	December	Grand Total	Prior Year	% Change
Daniel K. Inouye Int'l (HNL)	137,636	113,573	142,913	129,556	124,804	146,454	168,137	177,782	149,011	190,988	158,483	168,005	1,767,342	938,821	87%
Australia	19,405	12,718	15,796	17,533	16,234	17,517	16,738	17,598	17,725	18,524	15,844	18,434	204,666	164,549	24%
Canada	24,086	22,459	25,907	15,562	9,603	9,413	10,200	10,264	9,899	11,546	19,185	25,498	193,622	152,905	27%
Europe	-	-	-	-	-	-	-	-	-	-	-	-	-	-	-
Japan	44,548	38,862	56,350	51,716	53,458	70,728	77,278	97,912	77,269	78,360	82,848	86,184	815,513	268,227	204%
New Zealand	6,781	4,127	5,892	6,182	5,290	6,245	6,650	6,299	5,285	5,279	4,840	5,594	68,464	34,000	101%
Other Asia	27,206	22,422	22,752	22,777	24,951	24,401	27,219	25,396	24,068	23,657	23,448	26,826	295,123	206,243	43%
Other Pacific	15,610	12,985	16,216	15,786	14,668	18,150	20,052	20,313	14,765	13,622	12,318	9,469	179,954	112,937	59%
Ellison Onizuka Kona Int'l (KOA)	7,284	6,322	7,539	2,913	-	-	1,347	2,453	3,005	6,082	7,540	8,489	44,732	28,393	58%
Canada	6,888	6,322	6,737	2,823	-	-	-	-	-	654	6,785	6,965	37,174	25,600	45%
Japan	396	-	802	90	-	-	1,347	2,453	-	191	755	1,524	7,558	2,793	171%
Other Asia	-	-	-	-	-	-	-	-	-	-	-	-	-	-	-
Kahului (OGG)	20,066	19,863	24,803	14,829	6,682	7,724	9,874	3,867	3,005	6,082	15,236	17,446	149,477	148,303	1%
Canada	20,066	19,863	24,803	14,829	6,682	7,724	9,874	3,867	3,005	6,082	15,236	17,446	149,477	148,303	1%
Japan	-	-	-	-	-	-	-	-	-	-	-	-	-	-	-
Other Asia	-	-	-	-	-	-	-	-	-	-	-	-	-	-	-
Lihue (LIH)	3,158	2,775	2,923	897	-	-	-	-	-	320	2,509	2,794	15,376	15,274	1%
Canada	3,158	2,775	2,923	897	-	-	-	-	-	320	2,509	2,794	15,376	15,274	1%
Japan	-	-	-	-	-	-	-	-	-	-	-	-	-	-	-
Other Asia	-	-	-	-	-	-	-	-	-	-	-	-	-	-	-
Other Pacific	-	-	-	-	-	-	-	-	-	-	-	-	-	-	-
Grand Total	168,144	142,533	178,178	148,195	131,486	154,178	169,358	184,102	152,016	158,235	183,768	196,734	1,966,927	1,130,791	74%

I-D. Monthly Enplaned (Outbound) International Air Passengers Per Airport Per Destination (excluding transits)

Airport/Destination	January	February	March	April	May	June	July	August	September	October	November	December	Grand Total	Prior Year	% Change
Daniel K. Inouye Int'l (HNL)	136,453	116,724	145,159	121,551	138,578	151,792	147,932	156,035	150,864	156,254	159,205	166,080	1,746,627	924,113	89%
Australia	21,713	15,357	13,970	17,023	17,900	15,868	19,609	15,218	17,135	16,857	15,863	16,126	202,639	157,306	29%
Canada	23,100	21,787	27,015	17,726	10,117	10,073	10,155	11,009	10,056	10,687	18,324	23,002	193,051	150,641	28%
Europe	-	-	-	-	-	-	-	-	-	-	-	-	-	-	-
Japan	41,376	36,610	62,352	43,567	65,875	76,234	66,413	84,431	81,659	81,726	82,436	86,896	809,575	260,026	211%
New Zealand	7,765	5,397	4,234	5,049	5,029	4,669	8,501	5,551	5,977	6,404	5,716	5,966	70,258	34,986	101%
Other Asia	26,621	24,510	21,990	22,910	26,253	26,107	24,240	22,627	22,779	25,892	23,464	27,936	295,329	215,126	37%
Other Pacific	15,878	13,063	15,598	15,276	13,404	18,841	19,014	17,199	13,258	14,688	13,402	6,154	175,775	106,028	66%
Ellison Onizuka Kona Int'l (KOA)	6,642	6,146	7,623	3,730	7,294	8,527	9,434	5,888	2,702	4,667	13,429	14,169	152,588	149,055	2%
Canada	6,333	6,146	7,146	3,495	-	-	-	-	-	185	5,631	6,000	34,936	24,270	44%
Japan	309	-	477	235	-	-	751	2,064	-	125	459	1,217	5,637	1,825	209%
Other Asia	-	-	-	-	-	-	-	-	-	-	-	-	-	-	-
Kahului (OGG)	21,515	19,716	25,266	19,981	7,294	8,527	9,434	5,888	2,702	4,667	13,429	14,169	152,588	149,055	2%
Canada	21,515	19,716	25,266	19,981	7,294	8,527	9,434	5,888	2,702	4,667	13,429	14,169	152,588	149,055	2%
Japan	-	-	-	-	-	-	-	-	-	-	-	-	-	-	-
Other Asia	-	-	-	-	-	-	-	-	-	-	-	-	-	-	-
Lihue (LIH)	2,991	2,792	2,739	1,181	-	-	-	-	-	96	1,985	2,405	14,189	14,501 </	

AIR TRAFFIC STATISTICS FOR CALENDAR YEAR 2023

II. Monthly Deplaned/Enplaned Air Cargo (Freight & Mail in U.S. Tons) Per Origin/Destination (OD) Class

OD/Deplaned-Enplaned	January	February	March	April	May	June	July	August	September	October	November	December	Grand Total	Prior Year	% Change
Domestic Overseas	33,490	31,879	38,835	33,441	34,284	34,458	36,162	38,221	35,226	37,574	37,950	32,480	423,999	430,760	-1.6%
Deplaned	22,740	21,989	25,309	22,636	23,055	23,336	24,602	25,518	22,789	24,832	25,206	22,047	284,061	285,625	-1%
Enplaned	10,749	9,890	13,526	10,805	11,229	11,122	11,560	12,702	12,437	12,741	12,744	10,433	139,938	145,135	-4%
Interisland	19,586	16,966	19,675	16,459	18,563	18,553	17,707	20,365	17,146	18,341	19,746	20,901	226,008	236,631	-4%
Deplaned	9,793	8,433	9,837	9,230	9,281	9,327	8,854	10,183	8,573	9,170	9,873	10,450	113,004	118,316	-4%
Enplaned	9,793	8,433	9,837	9,230	9,281	9,327	8,854	10,183	8,573	9,170	9,873	10,450	113,004	118,316	-4%
International	7,238	7,606	10,035	8,350	8,427	8,838	8,613	8,795	8,883	9,557	9,095	9,685	105,123	108,442	-3%
Deplaned	3,828	3,785	5,662	4,506	4,775	5,105	4,824	5,423	5,316	5,666	5,457	5,848	60,196	56,986	6%
Enplaned	3,410	3,821	4,373	3,844	3,652	3,734	3,789	3,372	3,567	3,891	3,638	3,837	44,927	51,455	-13%
Grand Total	60,314	56,350	68,546	60,251	61,274	61,949	62,462	67,382	61,255	65,471	66,791	63,066	755,130	775,832	-3%

II-A. Monthly Deplaned (Inbound) Air Cargo (Freight & Mail in U.S. Tons) Per Origin Class Per Airport

Origin/Airport	January	February	March	April	May	June	July	August	September	October	November	December	Grand Total	Prior Year	% Change
Domestic Overseas	22,740	21,989	25,309	22,636	23,055	23,336	24,602	25,518	22,789	24,832	25,206	22,047	284,061	285,625	-1%
Daniel K. Inouye Int'l (HNL)	21,338	20,795	23,776	21,263	21,642	21,856	23,106	23,476	21,326	23,327	23,537	20,599	266,040	267,144	0%
Ellison Onizuka Kona Int'l (KOA)	104	94	124	93	81	91	91	127	82	108	161	58	1,215	1,268	-4%
Hilo Int'l (ITO)															-
Kahului (OGG)	1,268	1,074	1,378	1,245	1,293	1,353	1,362	1,882	1,345	1,357	1,441	1,360	16,357	15,340	7%
Lihue (LIH)	31	25	31	36	39	37	42	34	36	41	67	30	449	1,874	-76%
Interisland	9,793	8,433	9,837	9,230	9,281	9,327	8,854	10,183	8,573	9,170	9,873	10,450	113,004	118,316	-4%
Daniel K. Inouye Int'l (HNL)	2,671	1,982	2,247	2,527	2,327	2,115	1,980	2,311	2,056	2,133	2,463	2,614	27,426	32,123	-15%
Ellison Onizuka Kona Int'l (KOA)	1,753	1,598	1,963	1,708	1,853	1,943	1,808	1,927	1,742	1,969	1,897	2,027	22,186	22,675	-2%
Hana (HNM)															-
Hilo Int'l (ITO)	1,140	1,045	1,204	1,016	1,003	992	979	1,012	947	992	1,262	1,289	12,879	13,302	-3%
Kahului (OGG)	1,896	1,655	1,950	1,780	1,669	1,912	1,757	2,581	1,655	1,649	1,781	1,967	22,251	22,770	-2%
Kalaupapa (LUP)	5	4	5	10	5	6	5	8	7	8	7	8	79	69	15%
Kapalua (JHM)	77	81	92	62	51	55	65	42	21	72	107	107	838	1,277	-34%
Lanai (LNY)	203	185	196	184	198	206	201	175	216	238	249	224	2,475	2,390	4%
Lihue (LIH)	1,849	1,694	1,958	1,762	1,973	1,896	1,868	1,919	1,744	1,906	1,873	1,973	22,415	21,202	6%
Molokai (MKK)	199	189	223	182	197	202	190	209	185	204	232	242	2,455	2,508	-2%
Waimea-Kohala (MUE)															-
International	3,828	3,785	5,662	4,506	4,775	5,105	4,824	5,423	5,316	5,666	5,457	5,848	60,196	56,986	6%
Daniel K. Inouye Int'l (HNL)	3,828	3,784	5,639	4,506	4,775	5,105	4,797	5,361	5,316	5,658	5,424	5,796	59,988	56,985	5%
Ellison Onizuka Kona Int'l (KOA)			23				27	62		9	33	53	207	1	15338%
Kahului (OGG)	0.03	0.10										0	0.4		13%
Grand Total	36,361	34,206	40,809	36,372	37,111	37,768	38,280	41,124	36,678	39,669	40,536	38,346	457,260	460,928	-0.80%

II-B. Monthly Enplaned (Outbound) Air Cargo (Freight & Mail in U.S. Tons) Per Destination Class Per Airport

Destination/Airport	January	February	March	April	May	June	July	August	September	October	November	December	Grand Total	Prior Year	% Change
Domestic Overseas	10,749	9,890	13,526	10,805	11,229	11,122	11,560	12,702	12,437	12,741	12,744	10,433	139,938	145,135	-4%
Daniel K. Inouye Int'l (HNL)	9,936	9,280	12,726	10,050	10,452	10,412	10,716	11,755	11,462	11,852	11,746	9,709	130,095	136,298	-5%
Ellison Onizuka Kona Int'l (KOA)	524	440	490	453	464	451	511	617	497	581	496	467	5,990	5,782	4%
Hilo Int'l (ITO)														1	-100%
Kahului (OGG)	34	167	53	43	42	45	124	92	64	57	67	27	815	677	20%
Lihue (LIH)	255	3	257	260	272	213	209	240	415	251	435	230	3,038	2,375	28%
Interisland	9,793	8,433	9,837	9,230	9,281	9,327	8,854	10,183	8,573	9,170	9,873	10,450	113,004	118,316	-4%
Daniel K. Inouye Int'l (HNL)	7,035	6,405	7,522	6,648	6,889	7,134	6,850	7,741	6,398	6,908	7,201	7,655	84,386	82,979	2%
Ellison Onizuka Kona Int'l (KOA)	310	310	349	302	322	302	265	303	254	327	389	373	3,807	5,236	-27%
Hana (HNM)															-
Hilo Int'l (ITO)	733	549	595	642	803	687	625	779	672	674	625	584	7,968	9,429	-15%
Kahului (OGG)	670	603	703	629	665	616	574	756	655	680	672	806	8,028	10,369	-23%
Kalaupapa (LUP)	0	2	1	2	1	0	2	2	2	4	1	1	19	21	-11%
Kapalua (JHM)	27	26	26	23	25	25	20	11	17	17	12	16	243	317	-23%
Lanai (LNY)	39	38	39	46	50	42	44	54	39	37	29	23	480	434	11%
Lihue (LIH)	942	467	545	492	492	486	440	496	504	489	911	951	7,614	9,094	-16%
Molokai (MKK)	37	32	59	46	35	35	34	41	32	33	32	41	455	435	5%
Waimea-Kohala (MUE)									0	2	1	0	3		-
International	3,410	3,821	4,373	3,844	3,652	3,734	3,789	3,372	3,567	3,891	3,638	3,837	44,927	51,455	-13%
Daniel K. Inouye Int'l (HNL)	3,403	3,821	4,373	3,843	3,652	3,734	3,779	3,344	3,567	3,891	3,638	3,831	44,876	51,442	-13%
Ellison Onizuka Kona Int'l (KOA)	7			1			9	28		0		6	51	4	1100%
Kahului (OGG)		0.01	0.03										0.04	10	-100%
Grand Total	23,953	22,144	27,737	23,879	24,162	24,182	24,202	26,257	24,577	25,802	26,255	24,720	297,870	314,905	-5%

AIR TRAFFIC STATISTICS FOR CALENDAR YEAR 2023

II-C. Monthly Deplaned (Inbound) International Air Cargo (Freight & Mail in U.S. Tons) Per Airport Per Origin

Airport/Origin	January	February	March	April	May	June	July	August	September	October	November	December	Grand Total	Prior Year	% Change
Daniel K. Inouye Int'l (HNL)	3,828	3,784	5,639	4,506	4,775	5,105	4,797	5,361	5,316	5,658	5,424	5,796	59,988	56,985	5%
Australia	420	320	335	327	309	532	315	290	211	277	297	489	4,121	4,051	2%
Canada	3	4	6	5	0	1	1	0	0	3	0	8	30	13	134%
Europe	1,692	1,697	3,304	3,326	3,095	3,198	3,213	3,958	3,765	3,977	4,088	4,226	39,538	25,985	-100%
Japan	117	110	152	133	126	104	122	117	67	89	85	70	1,291	801	61%
New Zealand	1,524	1,589	1,773	642	812	1,109	1,083	918	1,147	994	880	938	13,409	25,004	-46%
Other Asia	72	65	69	74	433	161	64	79	126	319	72	65	1,599	1,115	43%
Other Pacific															
Ellison Onizuka Kona Int'l (KOA)			23				27	62		9	33	53	207	1	15338%
Canada															
Japan			23				27	62		9	33	53	207	1	15338%
Kahului (OGG)	0	0										0	0	0	13%
Canada	0	0											0	0	13%
Grand Total	3,828	3,785	5,662	4,506	4,775	5,105	4,824	5,423	5,316	5,666	5,457	5,848	60,196	56,986	6%

II-D. Monthly Enplaned (Outbound) International Air Cargo (Freight & Mail in U.S. Tons) Per Airport Per Destination

Airport/Destination	January	February	March	April	May	June	July	August	September	October	November	December	Grand Total	Prior Year	% Change
Daniel K. Inouye Int'l (HNL)	3,403	3,821	4,373	3,843	3,652	3,734	3,779	3,344	3,567	3,891	3,638	3,831	44,876	51,442	-13%
Australia	1,668	1,824	1,977	1,891	1,727	1,898	1,776	1,657	1,694	2,071	1,927	2,145	22,255	26,839	-17%
Canada	50	46	56	62	45	38	31	32	33	41	33	41	510	758	-33%
Europe	-	-	-	-	-	-	-	-	-	-	-	-	-	2	-100%
Japan	382	515	804	423	548	326	348	351	366	216	245	267	4,793	4,997	-4%
New Zealand	260	247	267	250	236	261	310	271	312	274	234	257	3,178	4,559	-30%
Other Asia	465	703	643	495	556	535	584	439	454	702	765	661	7,002	7,842	-11%
Other Pacific	578	487	626	722	539	675	730	593	707	587	433	460	7,137	6,444	11%
Ellison Onizuka Kona Int'l (KOA)	7	-	1				9	28		0	-	6	51	4	1109%
Canada	-	-	-	-	-	-	-	-	-	-	-	-	-	1	-100%
Japan	7	-	1				9	28		0	-	6	51	3	1464%
Kahului (OGG)	-	0	0									0	10	0	-100%
Canada	-	0	0										0	10	-100%
Grand Total	3,410	3,821	4,373	3,844	3,652	3,734	3,789	3,372	3,567	3,891	3,638	3,837	44,927	51,455	-13%

AIR TRAFFIC STATISTICS FOR CALENDAR YEAR 2023

III. Monthly Itinerant Aircraft Operations Per Airport

Airport/Aircraft Class	January	February	March	April	May	June	July	August	September	October	November	December	Grand Total	Prior Year	% Change
Daniel K. Inouye Int'l (HNL)	26,919	22,816	27,352	26,175	27,477	28,263	28,870	29,255	27,267	18,926	26,487	28,023	317,830	316,405	0%
Air Carrier	13,383	12,054	13,656	12,877	13,120	13,635	14,158	14,518	13,508	14,019	14,046	14,886	163,860	145,581	13%
Air Taxi	8,298	6,837	8,336	7,847	8,474	8,177	8,618	8,675	7,791	3,288	7,239	7,841	91,321	102,058	-11%
General Aviation	4,080	2,818	4,143	4,313	4,714	5,046	4,776	5,077	4,594	631	3,979	4,256	48,427	52,216	-7%
Military	1,158	1,107	1,217	1,138	1,169	1,405	1,318	1,085	1,374	988	1,223	1,040	14,222	16,550	-14%
Ellison Onizuka Kona Int'l (KOA)	5,976	4,990	5,635	5,167	5,210	5,418	5,408	5,847	5,408	5,605	5,426	5,668	65,758	66,590	-1%
Air Carrier	2,966	2,680	3,072	2,929	3,013	3,075	3,212	3,177	3,017	3,094	2,990	3,118	36,373	34,475	6%
Air Taxi	1,137	804	933	747	743	762	904	891	700	745	738	895	9,999	11,859	-16%
General Aviation	1,638	1,333	1,450	1,363	1,326	1,341	1,122	1,574	1,505	1,538	1,555	1,528	17,273	17,966	-4%
Military	205	173	180	128	128	240	170	205	186	228	143	127	2,113	2,290	-8%
Hilo Int'l (ITO)	3,447	2,224	2,857	2,831	2,815	3,328	3,351	3,274	3,068	3,150	3,065	2,973	36,333	37,007	-2%
Air Carrier	1,323	1,178	1,368	1,421	1,422	1,459	1,526	1,565	1,425	1,449	1,454	1,460	17,050	14,372	19%
Air Taxi	1,676	739	1,143	948	1,023	1,495	1,415	1,179	1,230	1,214	1,003	1,171	14,236	17,807	-20%
General Aviation	312	187	249	263	286	293	259	322	256	298	284	259	3,268	2,944	11%
Military	136	120	97	169	107	88	151	158	157	189	324	83	1,779	1,894	-6%
Kahului (OGG)	11,403	10,196	11,792	11,009	11,283	11,382	11,624	10,482	8,135	8,782	8,606	9,447	124,141	141,944	-12%
Air Carrier	5,337	4,833	5,547	5,290	5,173	5,269	5,532	5,468	4,522	4,432	4,446	4,841	60,690	61,778	-2%
Air Taxi	4,788	4,537	5,129	4,684	5,021	5,092	4,949	3,619	2,747	3,258	3,117	3,655	50,596	64,432	-21%
General Aviation	1,180	774	1,052	948	1,030	969	1,062	1,163	793	996	916	881	11,764	13,517	-13%
Military	98	52	64	87	59	52	81	232	73	96	127	70	1,091	1,317	-17%
Kalaheo (JRF)	2,726	1,977	2,453	2,898	2,986	3,526	3,539	4,190	3,617	3,887	3,568	1,721	37,088	32,318	15%
Air Carrier	-	-	-	-	-	-	-	-	-	-	-	-	-	-	-
Air Taxi	-	-	-	-	-	-	-	-	-	-	-	-	-	-	-
General Aviation	2,163	1,485	2,023	2,377	2,580	3,029	3,020	3,619	3,055	3,414	2,925	1,445	31,135	25,648	21%
Military	563	492	430	521	406	497	519	571	562	473	643	276	5,953	6,670	-11%
Kapalua (JHM)	267	249	196	190	178	142	204	230	127	102	151	164	2,200	2,681	-18%
Air Carrier	-	-	-	-	-	-	-	-	-	-	-	-	-	-	-
Air Taxi	267	248	196	188	173	142	204	121	126	101	151	160	2,077	2,618	-21%
General Aviation	-	1	-	2	-	-	-	99	1	1	-	4	108	63	71%
Military	-	-	-	-	5	-	-	10	-	-	-	-	15	-	-
Lihue (LIH)	8,983	7,142	9,172	9,373	9,862	10,270	10,050	10,790	10,629	10,018	9,024	10,232	115,545	109,892	5%
Air Carrier	2,708	2,477	2,764	2,763	2,820	2,895	2,959	2,972	2,686	2,755	2,647	2,699	33,145	30,645	8%
Air Taxi	5,828	4,315	5,362	6,043	6,643	6,939	6,850	7,179	7,490	6,648	5,309	6,431	75,589	73,003	4%
General Aviation	369	249	300	326	308	315	357	455	339	494	940	955	5,447	4,700	16%
Military	78	101	146	158	91	124	83	114	114	120	131	107	1,364	1,544	-12%
Molokai (MKK)	2,829	2,408	2,754	2,680	2,861	2,703	2,659	2,742	2,612	2,843	2,545	2,645	32,281	32,731	-1%
Air Carrier	-	-	2	47	60	-	116	164	160	118	104	172	943	-	-
Air Taxi	2,512	2,185	2,298	2,139	2,349	2,356	2,190	2,191	2,030	2,190	2,019	2,098	26,557	28,957	-8%
General Aviation	304	196	419	464	427	316	338	363	385	497	394	372	4,475	3,437	30%
Military	13	27	35	30	25	31	15	24	37	38	28	3	306	337	-9%
Grand Total	62,550	52,002	62,211	60,323	62,672	65,032	65,705	66,760	60,863	53,313	58,872	60,873	731,176	738,668	-1.0%

III-A. Monthly Local Aircraft Operations Per Airport

Airport/Aircraft Class	January	February	March	April	May	June	July	August	September	October	November	December	Grand Total	Prior Year	% Change
Daniel K. Inouye Int'l (HNL)	2	2	8	2	8	8	6	2	8	8	2	2	37	27	37%
General Aviation	2	2	8	2	8	8	6	2	8	8	2	2	34	27	26%
Military	-	-	-	-	-	-	1	-	-	2	-	-	3	-	-
Dillingham Field (HDH)	2,764	2,274	2,840	2,840	3,283	3,924	3,694	3,763	4,046	2,798	2,114	2,968	37,288	33,501	11%
Civilian Power	1,980	1,596	2,254	2,254	2,625	3,102	2,965	2,827	3,012	2,350	1,670	2,406	29,042	25,808	13%
Glider	446	520	386	366	442	634	484	546	444	220	272	402	5,142	4,081	26%
Military	328	158	220	220	216	188	244	380	590	228	172	160	3,104	3,612	-14%
Ellison Onizuka Kona Int'l (KOA)	4,313	3,942	4,209	3,593	3,743	3,946	3,124	3,794	4,820	3,758	4,738	4,553	48,533	37,917	28%
General Aviation	4,124	3,771	4,044	3,307	3,542	3,780	2,995	3,563	4,626	3,534	4,574	4,257	46,117	34,982	32%
Military	189	171	165	286	201	166	129	231	194	224	164	296	2,416	2,935	-18%
Hilo Int'l (ITO)	671	481	688	1,000	619	769	580	1,179	749	826	639	9240	10,022	8%	
General Aviation	567	415	591	674	577	745	630	1,031	611	621	606	496	7,626	7,577	1%
Military	104	66	97	326	42	24	50	86	138	205	333	143	1,614	2,445	-34%
Kahului (OGG)	1,072	504	806	964	818	953	1,260	617	795	1,047	888	1,076	10,800	8,767	23%
General Aviation	1,072	504	806	964	818	953	1,260	612	795	1,027	830	1,070	10,711	8,696	23%
Military	-	-	-	-	-	-	-	-	-	20	58	6	89	71	25%
Kalaheo (JRF)	13,274	8,764	12,918	12,731	14,994	15,436	15,739	16,143	14,613	15,617	13,223	13,653	167,105	151,365	10%
General Aviation	12,024	8,025	12,045	12,026	14,211	14,416	14,849	15,015	13,322	14,757	12,106	12,446	155,242	136,635	14%
Military	1,250	739	873	705	783	1,020	890	1,128	1,291	860	1,117	1,207	11,863	14,730	-19%
Kapalua (JHM)	-	-	-	-	-	-	-	-	-	-	-	-	-	-	-
General Aviation	-	-	-	-	-	-	-	-	-	-	-	-	-	-	-
Military	-	-	-	-	-	-	-	-	-	-	-	-	-	-	-
Lihue (LIH)	1,187	903	1,180	1,141	1,236	1,556	1,482	1,225	1,699	1,192	336	466	13,603	13,113	4%
General Aviation	1,163	895	1,164	1,128	1,216	1,552	1,478	1,223	1,681	1,184	326	462	13,472	12,891	5%
Military	24	8	16	13	20	4	4	2	18	8	10	4	131	222	-41%
Molokai (MKK)	38	42	106	95	77	30	118	117	121	120	88	62	1,014	842	20%
General Aviation	38	27	87	95	76	30	108	113	117	88	50	62	891	606	47%

AIR TRAFFIC STATISTICS FOR CALENDAR YEAR 2023

III-B. Monthly Landings (Arrivals) Per Airport Per Service Type As Reported by Aircraft Operators

Airport/Service Type	January	February	March	April	May	June	July	August	September	October	November	December	Grand Total	Prior Year	% Change
Daniel K. Inoué Int'l (HNL)	10,228	9,255	10,636	9,815	10,322	10,185	10,956	10,746	10,110	10,645	10,205	10,781	123,884	117,650	5.39%
Passenger	6,652	5,878	6,621	6,390	6,438	6,475	6,831	6,854	6,341	6,647	6,571	6,821	78,519	71,168	10.33%
Passenger-Charter	287	239	249	271	302	295	328	367	365	392	313	348	3,746	2,283	64.08%
Passenger-Government Charter	15	16	20	17	20	23	25	35	22	19	16	2	230	187	22.99%
Passenger-Tour Operator	1,723	1,529	1,789	1,669	1,542	1,618	1,686	1,577	1,443	1,475	1,209	1,334	18,594	19,222	-3.27%
Cargo	1,029	959	1,135	958	1,349	1,328	1,300	1,397	1,265	1,363	1,356	1,446	14,885	14,885	-6.92%
Cargo-Government Charter	11	11	19	20	20	22	31	11	15	3	2	16	181	240	-24.58%
Ferry Flight	267	439	607	284	516	281	584	327	523	591	565	625	5,609	6,062	-7.47%
Fuel/Tech Stop	21	3	7	3	4	-	-	-	-	-	-	-	38	98	-61.22%
Fixed Base Operator	223	181	189	213	131	143	171	178	136	155	173	189	2,082	2,299	-9.44%
Dillingham Field (HDH)	350	291	414	396	587	510	543	578	635	497	422	542	5,764	5,443	6.03%
Passenger-Tour Operator	350	290	414	396	587	510	543	578	635	497	422	542	5,764	5,443	5.90%
Cargo	-	1	-	-	-	-	-	-	-	-	-	-	1	-	-
Ferry Flight	-	-	-	-	-	-	-	-	-	-	6	-	6	-	-
Ellison Onizuka Kona Int'l (KOA)	2,404	2,031	2,302	2,144	2,037	2,194	2,199	2,255	2,071	2,150	2,169	2,341	26,287	26,914	-2.33%
Passenger	1,663	1,469	1,664	1,560	1,539	1,573	1,668	1,557	1,541	1,568	1,557	1,639	19,008	18,995	0.49%
Passenger-Charter	88	70	82	64	63	101	76	111	108	114	90	124	1,091	1,312	-16.84%
Passenger-Tour Operator	179	97	147	101	74	146	90	93	102	115	95	132	1,627	1,573	-3.41%
Cargo	181	167	195	177	201	189	188	193	187	201	197	205	2,231	2,219	0.54%
Ferry Flight	39	66	49	41	42	42	34	39	28	37	46	43	506	519	-2.50%
Fixed Base Operator	254	162	165	211	118	133	143	162	105	115	184	186	1,950	2,230	-12.56%
Hana (HNM)	84	73	83	83	90	87	97	73	66	89	64	82	981	1,058	-7.28%
Passenger	62	54	61	61	64	59	60	58	60	58	56	65	718	721	-0.42%
Passenger-Charter	1	-	-	-	-	-	-	-	-	-	-	-	1	2	-50.00%
Passenger-Tour Operator	21	19	22	22	26	38	37	13	6	24	8	17	253	307	-17.59%
Ferry Flight	-	-	-	-	-	-	-	2	-	7	-	-	9	28	-67.86%
Hilo Int'l (ITS)	1,382	981	1,358	1,154	1,185	1,436	1,392	1,308	1,247	1,294	1,202	1,270	15,209	15,533	-2.09%
Passenger	657	547	645	645	650	642	686	650	606	619	655	605	598	605	2,659%
Passenger-Charter	40	27	36	37	38	35	39	51	51	60	63	51	528	12	4300.00%
Passenger-Tour Operator	475	244	438	290	293	393	452	402	397	392	313	387	4,646	5,603	-17.08%
Cargo	125	116	145	142	160	132	143	142	149	190	174	171	1,789	2,053	-12.86%
Ferry Flight	62	40	84	36	42	57	65	60	40	26	32	47	591	433	36.49%
Fixed Base Operator	23	7	9	2	7	7	3	4	7	15	14	16	104	76	36.94%
Kahului (OGG)	5,429	4,953	5,888	5,249	5,720	5,378	5,682	4,824	3,730	4,039	4,121	4,612	59,525	66,591	-10.61%
Passenger	3,592	3,155	3,729	3,423	3,369	3,394	3,474	3,413	2,839	2,872	2,862	3,058	39,253	41,592	-5.62%
Passenger-Charter	21	31	26	23	32	51	43	49	39	39	39	50	459	32	1334.38%
Passenger-Government Charter	-	-	-	-	-	-	-	-	-	-	-	-	2	2	-100.00%
Passenger-Tour Operator	1,245	1,320	1,497	1,322	1,363	1,361	1,567	686	371	639	644	809	13,314	18,434	-27.77%
Cargo	216	199	249	315	348	393	299	406	341	349	338	350	3,803	3,707	2.58%
Ferry Flight	102	94	131	131	117	75	92	149	84	61	95	74	1,107	877	26.23%
Fixed Base Operator	253	154	156	133	101	104	134	121	56	79	132	166	1,589	1,947	-18.39%
Kalaheo (JRF)	14	3	15	18	25	15	39	8	12	11	9	29	198	536	-63.06%
Passenger	-	-	-	-	-	-	-	-	-	-	-	-	1	-	-
Passenger-Charter	-	-	-	-	-	-	-	-	-	-	-	-	10	-	-100.00%
Passenger-Tour Operator	4	3	10	9	9	15	39	8	12	11	9	29	158	374	-57.75%
Cargo	1	-	-	-	-	-	-	-	-	-	-	-	1	19	-94.74%
Ferry Flight	9	-	5	9	16	-	-	-	-	-	-	-	39	132	-70.45%
Kalaupapa (LUP)	139	120	136	126	134	139	132	148	120	126	123	125	1,568	1,884	-16.77%
Passenger	120	102	112	102	110	116	111	125	99	105	103	104	1,309	1,621	-19.25%
Passenger-Charter	-	-	-	-	1	-	-	-	-	-	-	-	1	-	-
Passenger-Tour Operator	19	18	24	24	-	-	-	-	-	-	-	-	85	43	97.67%
Cargo	-	-	-	-	23	23	21	23	21	21	20	21	173	218	-20.64%
Ferry Flight	-	-	-	-	-	-	-	-	-	-	-	-	2	2	-100.00%
Kapalua (JHM)	172	151	132	117	92	94	127	121	71	89	104	114	1,384	2,119	-34.69%
Passenger	111	91	65	65	46	43	77	55	42	24	39	47	705	1,303	-45.89%
Passenger-Charter	-	-	-	-	2	-	-	-	-	-	-	-	2	10	-80.00%
Passenger-Tour Operator	-	-	-	-	-	-	-	3	-	-	-	-	3	1	200.00%
Cargo	58	59	64	52	44	48	50	41	26	61	64	65	632	784	-19.39%
Ferry Flight	3	1	3	-	-	3	22	3	4	1	2	2	42	21	100.00%
Lanai (LNY)	1,059	909	1,065	1,017	1,046	1,009	1,004	1,035	987	1,097	1,017	1,044	12,289	12,782	-3.86%
Passenger	409	330	451	449	446	413	421	424	396	411	378	359	4,887	4,956	-1.37%
Passenger-Charter	15	15	17	19	32	38	27	4	4	7	6	5	189	93	103.23%
Passenger-Tour Operator	528	462	484	454	300	301	306	343	338	379	358	321	4,574	4,679	-2.24%
Cargo	35	32	34	28	187	175	182	168	187	206	203	183	1,620	1,803	-10.15%
Ferry Flight	53	52	61	57	75	71	61	88	59	83	63	153	876	1,011	-13.35%
Fixed Base Operator	19	18	18	10	6	11	7	8	3	11	9	23	143	241	-40.66%
Lihue (LIH)	4,505	3,527	4,624	4,727	5,040	4,887	5,110	5,251	5,073	4,586	4,155	4,807	56,232	54,444	3.39%
Passenger	1,357	1,210	1,393	1,328	1,343	1,355	1,552	1,407	1,289	1,328	1,315	1,382	16,259	15,249	6.62%
Passenger-Charter	327	246	378	451	533	439	453	573	748	311	421	471	5,351	5,144	4.02%
Passenger-Tour Operator	2,437	1,774	2,498	2,587	2,675	2,693	2,756	2,916	2,715	2,612	2,054	2,580	30,297	29,663	2.14%
Cargo	193	177	205	189	273	288	232	259	238	246	240	250	2,790	2,557	9.11%
Ferry Flight	106	76	95	111	195	76	71	58	56	48	55	31	974	1,156	-15.74%
Fixed Base Operator	85	44	55	61	21	36	46	40	27	43	70	93	621	676	-8.00%
Molokai (MKK)	1,272	1,109	1,228	1,095	1,117	1,091	1,149	1,123	1,022	1,180	1,092	1,156	15,126	15,455	-10.45%
Passenger	1,059	903	988	887	871	866	917	872	785	945	826	829	10,748	12,688	-15.29%
Passenger-Charter	-	19	15	20	32	24	28	27	18	33	17	24	257	9	2755.56%
Passenger-Tour Operator	144	128	156	132	-	-									

AIR TRAFFIC STATISTICS FOR CALENDAR YEAR 2023

III-C. Monthly Landings (Arrivals) of Wide Body (WB) Aircraft at Five (5) Major Airports

Airports	January	February	March	April	May	June	July	August	September	October	November	December	Grand Total	Prior Year	% Change
Daniel K. Inouye Int'l (HNL)	1,629	1,489	1,804	1,670	1,631	1,616	1,732	1,720	1,581	1,622	1,619	1,660	19,772	18,722	6%
Ellison Onizuka Kona Int'l (KOA)	114	112	161	63	69	109	104	106	59	108	87	64	1,156	963	20%
Hilo Int'l (ITO)	1	1	2	1	1	1	1	1	1	1	1	1	6	7	-14%
Kahului (OGG)	360	310	367	232	212	276	217	228	156	162	160	162	2,842	3,111	6%
Lihue (LH)	50	50	57	62	54	52	49	52	53	54	48	48	629	626	0%
Grand Total	2,153	1,961	2,391	2,028	1,966	2,054	2,102	2,107	1,850	1,946	1,914	1,934	24,405	23,429	4%

III-D. Monthly Landings (Arrivals) Per Airport Per FAA's Airplane Design Group

Airports/Design Group	January	February	March	April	May	June	July	August	September	October	November	December	Grand Total	Prior Year	% Change
Daniel K. Inouye Int'l (HNL)	10,228	9,255	10,636	9,815	10,322	10,185	10,956	10,746	10,110	10,645	10,205	10,781	123,884	117,550	5%
VI	52	48	44	51	54	35	36	44	44	50	72	90	620	450	38%
V	1,579	1,434	1,524	1,528	1,506	1,580	1,651	1,666	1,510	1,552	1,525	1,676	18,731	16,723	12%
IV	621	522	761	608	543	476	608	582	523	528	616	705	7,093	7,258	-2%
III	4,297	4,107	4,659	4,304	4,625	4,501	4,907	4,777	4,698	4,981	4,839	4,876	55,571	48,903	14%
II	2,308	1,936	2,260	2,037	2,017	1,945	2,022	2,052	1,830	2,014	1,915	1,964	24,320	27,211	-11%
I	1,371	1,208	1,388	1,287	1,577	1,648	1,732	1,625	1,505	1,520	1,238	1,450	17,549	17,002	3%
Unspecified	-	-	-	-	-	-	-	-	-	-	-	-	3	-	-
Dillingham Field (HDH)	350	291	414	396	587	510	543	578	635	497	428	542	5,771	5,443	6%
II	306	233	379	353	493	444	479	509	558	455	373	470	5,052	4,989	1%
I	44	58	35	43	94	66	64	69	77	42	55	72	719	454	58%
Ellison Onizuka Kona Int'l (KOA)	2,404	2,031	2,302	2,144	2,037	2,184	2,199	2,255	2,071	2,150	2,169	2,341	26,287	26,914	-2%
VI	-	2	-	-	2	5	-	-	-	-	-	-	9	-	-
V	24	32	57	28	39	78	72	64	28	77	60	48	607	541	12%
IV	144	122	122	102	94	79	67	75	62	81	62	103	1,113	1,363	-18%
III	1,572	1,383	1,584	1,545	1,546	1,530	1,631	1,522	1,545	1,530	1,634	1,570	16,692	17,446	7%
II	390	316	311	298	202	218	246	289	219	226	283	291	3,286	4,596	-28%
I	274	176	228	171	154	274	183	205	217	236	194	265	2,577	2,966	-13%
Unspecified	-	-	-	-	-	-	-	-	-	-	-	-	2	-	-
Hana (HNM)	84	73	83	83	90	97	97	73	66	89	64	82	981	1,058	-7%
II	62	54	61	61	64	59	60	62	60	58	56	65	722	721	0%
I	22	19	22	22	26	38	37	11	6	31	8	17	259	337	-23%
Hilo Int'l (ITO)	1,382	981	1,358	1,154	1,185	1,436	1,392	1,308	1,247	1,294	1,202	1,270	15,209	15,533	-2%
V	-	-	2	1	-	-	-	1	-	-	-	-	4	5	-20%
IV	-	-	-	-	-	1	-	-	1	1	1	-	4	5	-20%
III	679	598	707	712	733	737	775	772	724	769	760	758	8,724	7,383	18%
II	158	78	142	73	86	65	91	47	39	44	34	49	906	2,193	-59%
I	545	305	507	368	366	633	526	483	480	407	463	407	5,974	5,947	-0%
Kahului (OGG)	5,429	4,953	5,888	5,249	5,720	5,378	5,682	4,824	3,730	4,039	4,121	4,512	59,525	66,591	-11%
V	327	277	361	190	167	203	216	195	129	137	150	149	2,501	3,395	-26%
IV	118	123	118	71	53	98	55	66	53	58	53	71	937	1,735	-46%
III	2,539	2,282	2,722	2,685	2,703	2,714	2,814	2,829	2,297	2,296	2,314	2,502	30,697	28,822	7%
II	1,201	971	1,111	928	854	912	957	960	826	850	984	904	11,478	13,994	-18%
I	1,244	1,300	1,576	1,375	1,843	1,451	1,640	754	425	568	720	886	13,912	18,655	-25%
Kalaheo (JRF)	14	3	15	18	25	15	39	8	12	11	9	29	198	536	-63%
II	-	-	-	-	-	-	-	-	-	-	-	-	-	1	-100%
I	14	3	15	18	25	15	39	8	12	11	9	29	198	531	-63%
Unspecified	-	-	-	-	-	-	-	-	-	-	-	-	4	-	-
Kalaupapa (LUP)	139	120	136	126	134	139	132	148	120	126	123	125	1,568	1,884	-17%
II	139	120	136	126	133	139	132	148	120	126	123	125	1,567	1,883	-17%
I	-	-	-	-	1	-	-	-	-	-	-	-	1	1	-
Kapalua (JHM)	172	151	132	117	92	94	127	121	71	89	104	114	1,384	2,119	-35%
III	-	-	-	-	-	-	-	-	-	-	-	-	-	-	-
II	170	151	132	117	90	94	127	120	71	89	104	114	1,379	2,104	-34%
I	2	2	2	2	2	2	2	2	2	2	2	2	2	15	-67%
Lanai (LNY)	1,059	909	1,065	1,017	1,046	1,009	1,004	1,035	987	1,097	1,017	1,044	12,289	12,782	-4%
III	2	2	1	34	45	48	33	31	22	32	31	21	302	197	53%
II	1,056	903	1,057	976	984	937	951	989	945	1,039	952	991	11,780	12,522	-6%
I	1	4	7	7	17	24	20	15	20	26	34	32	207	61	239%
Unspecified	-	-	-	-	-	-	-	-	-	-	-	-	2	-	-
Lihue (LH)	4,505	3,527	4,624	4,727	5,040	4,887	5,110	5,251	5,073	4,586	4,155	4,807	56,292	54,444	3%
V	-	2	4	13	2	-	1	-	3	2	1	-	28	18	56%
IV	82	75	88	79	83	82	79	83	80	83	77	82	973	1,622	-40%
III	1,430	1,269	1,462	1,387	1,475	1,434	1,639	1,499	1,372	1,408	1,407	1,490	17,272	15,487	12%
II	190	147	196	217	222	202	147	149	119	139	152	172	2,043	2,078	-2%
I	2,803	2,034	2,874	3,031	3,258	3,169	3,244	3,529	3,499	2,954	2,518	3,063	35,976	35,238	2%
Unspecified	-	-	-	-	-	-	-	-	-	-	-	-	1	-	-
Molokai (MKK)	1,272	1,109	1,095	1,095	1,117	1,091	1,149	1,123	1,022	1,180	1,068	1,092	13,546	15,126	-10%
III	-	-	-	-	-	-	-	-	-	-	-	-	-	-	-
II	1,272	1,090	1,212	1,075	1,081	1,066	1,120	1,094	1,000	1,139	1,044	1,064	13,257	15,114	-12%
I	-	19	16	20	36	25	29	29	22	41	24	28	289	12	2308%
Port Allen (PAK)	7	7	14	14	6	15	11	15	4	6	11	128	108	18%	
I	7	7	15	14	14	6	15	11	4	6	11	125	108	16%	
Upolu (UPP)	-	-	-	1	-	-	-	-	-	-	-	-	1	-	-
I	-	-	-	1	-	-	-	-	-	-	-	-	1	-	-
Waimea-Kohala (MUE)	61	73	67	82	82	83	89	99	100	85	92	100	1,013	853	19%
II	61	52	51	58	58	58	58	61	60	55	55	60	687	734	-6%
I	-	21	16	24	24	25	31	38	40	30	37	40	326	119	174%
Grand Total	27,106	23,483	27,963	26,038	27,491	27,114									

AIR TRAFFIC STATISTICS FOR CALENDAR YEAR 2022

Statewide Monthly Air Traffic Per Origin/Destination (OD) Class (excluding Transits)															
OD Class/Air Traffic Type	January	February	March	April	May	June	July	August	September	October	November	December	Grand Total	Prior Year	% Change
Domestic Overseas															
Passengers	1,360,920	1,311,543	1,690,485	1,705,981	1,691,956	1,816,006	1,949,601	1,786,412	1,479,221	1,535,009	1,483,787	1,663,308	19,474,229	15,315,041	27%
Crew	70,232	64,309	76,584	98,217	71,791	71,754	77,256	72,934	61,272	62,095	63,627	71,924	861,995	786,629	10%
Cargo (Freight & Mail in US Tons)	34,912	31,873	34,799	35,379	35,214	36,084	36,451	37,049	35,052	36,793	37,348	39,805	430,760	401,388	7%
Interisland															
Passengers	839,150	867,220	1,140,815	1,096,188	1,182,840	1,318,884	1,461,050	1,213,312	1,330,308	1,258,382	1,492,236	1,455,041	8,368,530	7,448,530	74%
Cargo (Freight & Mail in US Tons)	21,281	17,884	20,549	19,407	19,807	20,008	18,779	19,802	18,879	19,577	18,266	22,392	236,631	259,908	-9%
International															
Passengers	88,512	84,161	153,628	170,307	145,678	152,909	206,472	225,395	199,595	231,963	255,779	330,156	2,244,555	411,513	445%
Crew	7,161	5,852	8,103	6,648	8,184	8,173	10,917	18,626	12,389	13,161	13,965	16,304	131,483	38,904	238%
Cargo (Freight & Mail in US Tons)	7,985	6,405	8,271	7,927	8,936	8,394	9,380	10,574	9,985	9,851	9,993	10,639	108,442	88,948	22%

Statewide Monthly Aircraft Operations per Aircraft Class per Itinerant/Local as accounted by the Air Traffic Control Tower (ATCT)															
Itinerant-Local/Aircraft Class	January	February	March	April	May	June	July	August	September	October	November	December	Grand Total	Prior Year	% Change
Itinerant															
Air Carrier	22,441	20,249	27,251	23,380	23,993	24,170	25,863	25,368	23,502	23,771	23,868	26,030	289,886	245,649	18%
Air Taxi	21,604	18,764	20,453	19,487	20,150	20,842	21,781	21,623	19,713	20,068	18,492	19,783	242,760	238,383	2%
General Aviation	10,568	9,791	7,086	6,178	6,213	6,279	6,274	7,044	6,513	6,115	5,845	5,904	83,810	112,919	-26%
Military	2,542	2,422	2,222	2,175	2,382	2,133	2,746	2,747	2,085	2,081	2,591	2,172	28,298	27,802	2%
Local															
Civilian Power	20,656	21,471	22,476	20,336	19,224	19,677	20,472	23,938	23,014	22,058	21,738	20,467	255,527	248,493	3%
General Aviation	1,778	1,782	2,290	2,294	1,882	1,809	1,986	2,711	2,878	2,052	2,206	2,140	25,808	23,892	8%
Glider	16,570	16,854	17,424	15,798	15,319	15,409	15,911	18,481	17,628	18,016	17,413	16,566	201,387	194,538	4%
Military	236	216	322	314	318	316	390	284	260	362	493	570	4,081	3,252	25%
Grand Total	77,811	72,697	79,488	71,556	71,962	73,101	77,136	80,720	74,827	74,093	72,534	74,356	900,281	873,246	3%

I. Monthly Enplaned/Deplaned Air Passengers Per Origin/Destination (OD) Class (excluding Transit Passengers)															
OD Class/Deplaned-Enplaned	January	February	March	April	May	June	July	August	September	October	November	December	Grand Total	Prior Year	% Change
Domestic Overseas															
Deplaned	663,226	665,144	857,190	835,005	847,625	915,040	978,216	858,592	730,021	767,526	744,161	860,696	9,722,442	7,694,979	26%
Enplaned	697,694	646,399	833,295	870,976	844,331	900,966	971,385	927,620	749,200	767,483	739,626	802,612	9,751,787	7,620,062	28%
Interisland	839,150	867,220	1,140,815	1,096,188	1,182,840	1,318,884	1,461,050	1,213,312	1,330,308	1,258,382	1,492,236	1,455,041	8,368,530	7,448,530	74%
Deplaned	419,575	433,610	570,294	548,094	591,420	659,442	730,452	676,828	606,656	665,154	629,191	746,118	7,276,834	4,184,226	74%
Enplaned	419,575	433,610	570,521	548,094	591,420	659,442	730,598	676,828	606,656	665,154	629,191	746,118	7,277,207	4,184,304	74%
International	88,512	84,161	153,628	170,307	145,678	152,909	206,472	225,395	199,595	231,963	255,779	330,156	2,244,555	411,513	445%
Deplaned	41,791	43,263	78,270	84,585	70,182	75,766	109,026	115,837	99,273	114,304	129,273	169,221	1,130,791	218,886	417%
Enplaned	46,721	40,898	75,358	85,722	75,496	77,143	97,446	109,558	100,322	117,659	126,506	160,935	1,113,764	192,627	478%
Grand Total	2,288,582	2,262,924	2,984,928	2,972,476	3,020,474	3,287,739	3,617,123	3,365,463	2,892,128	3,087,280	2,997,946	3,488,700	36,272,625	24,096,084	51%

I-A. Monthly Deplaned (Inbound) Air Passengers Per Origin Class Per Airport (excluding Transit Passengers)															
Origin Class/Airport	January	February	March	April	May	June	July	August	September	October	November	December	Grand Total	Prior Year	% Change
Domestic Overseas															
Daniel K. Inouye Int'l (HNL)	349,318	356,111	455,525	438,542	442,240	426,936	475,436	432,808	386,427	405,955	405,886	458,867	5,034,051	4,002,618	26%
Ellison Onizuka Kona Int'l (KOA)	76,507	76,891	101,608	95,416	99,431	115,635	122,732	103,527	79,353	83,258	76,934	92,399	1,123,691	928,003	21%
Hilo Int'l (ITO)	1,934	1,475	3,086	2,671	2,976	4,646	5,043	5,081	3,799	3,542	3,274	3,388	40,915	23,492	74%
Kahului (OGG)	177,577	171,118	218,357	219,625	220,664	269,867	277,042	233,312	189,968	198,864	189,227	227,114	2,592,735	2,156,824	20%
Lihue (LIH)	57,890	59,549	78,614	78,751	82,314	97,956	97,963	83,864	70,474	75,907	68,840	78,928	931,050	584,042	59%
Interisland	419,575	433,610	570,294	548,094	591,420	659,442	730,452	676,828	606,656	665,154	629,191	746,118	7,276,834	4,184,226	74%
Daniel K. Inouye Int'l (HNL)	186,478	187,628	254,251	241,041	258,072	291,382	322,904	296,158	263,378	295,714	279,123	309,476	3,185,605	1,855,405	72%
Ellison Onizuka Kona Int'l (KOA)	53,503	54,769	67,279	65,297	72,098	80,462	89,694	80,131	74,961	80,578	76,537	133,570	928,359	514,700	80%
Hana (HNM)	154	195	190	186	227	201	233	208	164	171	207	212	2,348	2,065	14%
Hilo Int'l (ITO)	36,250	37,556	51,029	46,691	50,431	53,031	61,882	56,437	52,068	58,691	57,195	68,379	629,640	359,713	75%
Kahului (OGG)	83,417	87,728	114,038	115,290	124,752	142,580	153,909	149,574	129,334	135,199	128,305	141,088	1,505,208	840,368	79%
Kalaheo (JRF)	-	-	-	-	-	-	-	-	-	-	-	-	-	-	-
Kalaupapa (LUP)	528	603	742	187	687	666	725	729	597	663	574	633	7,334	4,219	74%
Kapalua (JHM)	615	691	741	686	772	808	833	742	554	508	594	643	8,187	6,204	32%
Lanai (LNY)	3,188	3,584	4,397	4,250	5,034	5,000	5,080	5,440	4,904	5,643	4,983	4,728	56,231	43,832	28%
Lihue (LIH)	49,140	53,926	68,919	66,076	71,116	77,039	85,938	79,106	72,886	80,312	73,626	79,211	857,296	485,021	77%
Mokaae (MKK)	5,997	6,575	8,322	8,037	7,840	7,909	8,878	7,973	7,534	7,885	7,741	7,855	92,546	67,614	37%
Upolu (UPP)	-	-	-	-	-	-	-	-	-	-	-	-	-	-	-
Waimea-Kohala (MUE)	305	355	386	353	391	364	382	330	276	310	306	323	4,081	5,085	-20%
International	41,791	43,263	78,270	84,585	70,182	75,766	109,026	115,837	99,273	114,304	129,273	169,221	1,130,791	218,886	417%
Daniel K. Inouye Int'l (HNL)	27,562	27,021	48,270	62,499	62,413	70,376	99,687	106,023	91,432	101,421	104,465	137,652	938,821	173,512	441%
Ellison Onizuka Kona Int'l (KOA)	2,602	3,040	5,537	3,808	4,000	4,000	4,000	4,000	4,000	4,000	4,000	4,000	28,393	5,996	374%
Kahului (OGG)	10,040	11,399	21,262	18,140	19,000	21,000	22,000	20,000	18,000	19,000	20,000	22,000	148,303	36,064	311%
Lihue (LIH)	1,578	1,803	3,201	2,138	2,138	2,138	2,138	2,138	2,138	2,138	2,138	2,138	15,274	3,314	361%
Grand Total	1,124,592	1,142,017	1,505,754	1,467,684	1,509,227	1,650,248	1,817,694	1,651,257	1,435,950	1,546,984	1,502,625	1,776,035	18,130,067	12,098,091	50%

AIR TRAFFIC STATISTICS FOR CALENDAR YEAR 2022

I-B. Monthly Enplaned (Outbound) Air Passengers Per Destination Class Per Airport (excluding transit Passengers)

Destination Class/Airport	January	February	March	April	May	June	July	August	September	October	November	December	Grand Total	Prior Year	% Change
Domestic Overseas	697,694	646,399	833,295	870,976	844,331	900,966	971,385	927,220	749,200	767,483	739,626	802,612	9,751,787	7,620,062	28%
Daniel K. Inouye Int'l (HNL)	371,725	346,592	452,924	452,972	442,366	427,309	476,997	463,637	397,930	406,440	438,138	406,440	5,082,633	4,022,547	26%
Ellison Onizuka Kona Int'l (KOA)	82,033	73,705	97,164	97,452	97,945	115,341	121,637	106,434	79,360	83,510	75,456	90,814	1,120,851	896,875	25%
Hilo Int'l (ITO)	1,680	1,367	3,013	2,423	2,923	4,889	5,040	4,304	3,558	3,583	3,046	3,737	39,763	23,115	72%
Kahului (OGG)	178,642	166,379	205,066	234,261	218,980	260,358	271,699	261,383	196,658	199,994	186,807	200,632	2,580,859	2,111,777	22%
Lihue (LIH)	63,614	58,156	75,128	83,868	82,117	93,069	96,012	92,062	71,694	74,793	67,877	69,291	927,681	565,748	64%
Interisland	419,575	433,610	570,521	548,094	591,420	659,442	730,598	676,828	606,656	665,154	629,191	746,118	7,277,207	4,184,304	74%
Daniel K. Inouye Int'l (HNL)	180,215	188,482	247,650	243,603	263,848	286,815	318,261	298,672	270,556	291,985	278,947	311,787	3,180,821	1,855,097	71%
Ellison Onizuka Kona Int'l (KOA)	57,289	57,016	74,466	67,333	71,268	84,866	91,175	84,119	73,549	80,804	78,530	86,192	906,627	535,208	69%
Hana (HNM)	149	186	229	194	251	217	208	209	172	307	195	197	5,524	2,328	137%
Hilo Int'l (ITO)	37,130	36,231	50,323	45,950	50,444	51,709	59,651	56,182	51,471	58,034	55,637	65,842	618,604	353,987	75%
Kahului (OGG)	82,930	87,719	113,606	111,383	123,658	142,831	157,345	141,166	124,956	137,334	126,125	144,524	1,493,577	875,237	71%
Kalaupapa (JRF)	-	-	-	-	-	-	-	-	-	-	-	-	-	-	-
Kalaupapa (LUP)	407	427	592	189	468	489	581	524	579	580	465	513	5,814	2,101	177%
Kapuluu (JHM)	618	645	684	600	717	756	772	689	533	517	516	587	7,634	5,842	31%
Lanai (LNY)	3,489	3,439	4,469	4,492	4,787	4,930	5,216	5,363	5,038	2,035	4,889	4,676	52,843	43,471	22%
Lihue (LIH)	50,585	52,592	69,640	65,768	67,781	78,345	88,059	81,335	72,037	82,360	75,923	123,865	908,290	439,041	107%
Molokai (MKK)	6,456	6,538	8,460	8,180	7,801	8,106	8,956	8,244	7,479	7,893	7,645	7,404	93,162	68,647	36%
Upolu (UPP)	307	335	362	402	387	378	374	325	286	305	317	333	4,311	4	-100%
Waimea-Kohala (MUE)	46,721	40,898	75,358	85,722	75,496	77,143	97,446	109,558	100,322	117,659	126,506	160,935	1,113,764	192,627	478%
Daniel K. Inouye Int'l (HNL)	30,325	25,233	46,908	58,955	65,724	70,862	88,961	99,075	92,545	107,214	104,253	134,058	924,113	155,813	493%
Ellison Onizuka Kona Int'l (KOA)	2,697	2,756	5,318	4,687	-	-	-	791	885	126	3,639	5,196	26,095	4,282	509%
Kahului (OGG)	12,188	11,195	20,017	19,315	9,772	6,281	8,485	9,692	6,892	10,246	16,189	18,783	149,055	29,984	397%
Lihue (LIH)	1,511	1,714	3,115	2,765	-	-	-	-	-	73	2,425	2,898	14,501	2,548	469%
Grand Total	1,163,990	1,120,907	1,479,174	1,504,792	1,511,247	1,637,551	1,799,429	1,714,206	1,456,178	1,550,296	1,495,323	1,709,665	18,142,758	11,996,993	51%

I-C. Monthly Deplaned (Inbound) International Air Passengers Per Airport Per Origin (excluding transits)

Airport/Origin	January	February	March	April	May	June	July	August	September	October	November	December	Grand Total	Prior Year	% Change
Daniel K. Inouye Int'l (HNL)	27,562	27,021	48,270	62,499	62,413	70,376	99,687	106,023	91,432	101,421	104,465	137,652	938,621	173,512	441%
Australia	4,440	2,460	7,767	14,315	13,709	16,951	16,777	16,958	17,216	18,267	16,948	18,839	164,549	3,854	4155%
Canada	7,903	11,345	21,875	18,577	10,273	7,351	10,150	10,058	8,700	12,153	13,004	21,516	152,905	29,011	427%
Europe	-	-	-	-	-	-	-	-	-	-	-	-	-	-	-
Japan	3,182	2,544	5,777	9,919	9,969	16,263	30,277	38,960	31,203	32,312	37,679	50,142	268,227	35,977	646%
New Zealand	-	-	-	-	14	1	5,434	4,909	5,442	5,025	5,025	7,713	34,000	-	-
Other Asia	10,963	8,431	11,927	17,131	16,098	16,705	22,529	20,209	17,550	21,252	19,454	23,994	206,243	94,874	117%
Other Pacific	1,074	2,241	924	2,557	12,350	13,105	14,520	15,029	11,299	11,995	12,355	15,448	112,897	9,786	1054%
Ellison Onizuka Kona Int'l (KOA)	2,602	3,040	5,537	3,808	-	-	1,257	1,134	330	4,482	6,203	6,203	28,393	5,996	374%
Canada	2,602	3,040	5,537	3,808	-	-	-	-	-	330	4,482	5,801	25,600	5,996	327%
Japan	-	-	-	-	-	-	1,257	1,134	-	-	-	402	2,793	-	-
Other Asia	-	-	-	-	-	-	-	-	-	-	-	-	-	-	-
Kahului (OGG)	10,049	11,399	21,262	16,140	7,769	5,390	9,339	8,557	6,707	12,226	17,398	22,067	148,303	36,064	311%
Canada	10,049	11,399	21,262	16,140	7,769	5,390	9,339	8,557	6,707	12,226	17,398	22,067	148,303	36,064	311%
Japan	-	-	-	-	-	-	-	-	-	-	-	-	-	-	-
Other Asia	-	-	-	-	-	-	-	-	-	-	-	-	-	-	-
Lihue (LIH)	1,578	1,803	3,201	2,138	-	-	-	-	-	327	2,928	3,299	15,274	3,314	361%
Canada	1,578	1,803	3,201	2,138	-	-	-	-	-	327	2,928	3,299	15,274	3,314	361%
Japan	-	-	-	-	-	-	-	-	-	-	-	-	-	-	-
Other Asia	-	-	-	-	-	-	-	-	-	-	-	-	-	-	-
Other Pacific	-	-	-	-	-	-	-	-	-	-	-	-	-	-	-
Grand Total	41,791	43,263	78,270	84,585	70,182	75,766	109,026	115,837	99,273	114,304	129,273	169,221	1,130,791	218,886	417%

I-D. Monthly Enplaned (Outbound) International Air Passengers Per Airport Per Destination (excluding transits)

Airport/Destination	January	February	March	April	May	June	July	August	September	October	November	December	Grand Total	Prior Year	% Change
Daniel K. Inouye Int'l (HNL)	30,325	25,233	46,908	58,955	65,724	70,862	88,961	99,075	92,545	107,214	104,253	134,058	924,113	155,813	493%
Australia	5,454	2,481	6,639	12,832	12,419	13,051	18,308	15,893	16,749	19,674	16,866	16,940	157,306	1,410	11056%
Canada	9,743	9,754	20,949	20,287	11,037	7,530	9,790	10,100	8,483	11,535	11,953	19,480	150,641	24,106	525%
Europe	-	-	-	-	-	-	-	-	-	-	-	-	-	-	-
Japan	2,719	2,247	6,215	7,459	13,548	17,366	21,709	36,490	32,960	32,990	37,336	49,567	260,026	31,425	727%
New Zealand	-	-	-	-	-	-	4,968	5,749	5,505	7,428	5,656	5,690	34,986	61	57254%
Other Asia	11,148	9,875	11,893	16,712	17,693	21,082	20,495	18,176	18,019	23,738	20,049	26,246	215,126	90,590	137%
Other Pacific	1,261	876	1,212	1,665	11,027	11,813	13,691	12,667	10,829	12,449	12,393	16,145	106,028	8,221	1190%
Ellison Onizuka Kona Int'l (KOA)	2,697	2,756	5,318	4,687	-	-	791	885	126	3,639	5,196	26,095	4,282	509%	
Canada	2,697	2,756	5,318	4,687	-	-	-	-	-	3,639	5,047	5,047	24,270	4,282	467%
Japan	-	-	-	-	-	-	791	885	126	-	-	-	149	-	-
Other Asia	-	-	-	-	-	-	-	-	-	-	-	-	1,825	-	-
Kahului (OGG)	12,188	11,195	20,017	19,315	9,772	6,281	8,485	9,692	6,892	10,246	16,189	18,783	149,055	29,984	397%
Canada	12,188	11,195	20,017	19,315	9,772	6,281	8,485	9,692	6,892	10,246	16,189	18,783	149,055	29,984	397%
Japan	-	-	-	-	-	-	-	-	-	-	-	-	-	-	-
Other Asia	-	-	-	-	-	-	-	-	-	-	-	-	-	-	-
Lihue (LIH)	1,511	1,714	3,115	2,765	-	-	-	-	-	73	2,425	2,898	14,501	2,548	469%
Canada	1,511	1,714	3,115	2,765	-	-	-	-	-	73	2,425	2,898	14,501	2,548	469%

AIR TRAFFIC STATISTICS FOR CALENDAR YEAR 2022

II. Monthly Deplaned/Enplaned Air Cargo (Freight & Mail in U.S. Tons) Per Origin/Destination (OD) Class

OD/Deplaned-Enplaned	January	February	March	April	May	June	July	August	September	October	November	December	Grand Total	Prior Year	% Change
Domestic Overseas	34,912	31,873	34,799	35,379	35,214	36,084	36,451	37,049	35,052	36,793	37,348	39,805	430,760	401,388	7%
Deplaned	23,368	20,919	22,759	23,514	23,742	23,937	24,607	24,292	23,216	24,353	24,743	26,175	285,625	274,651	4%
Enplaned	11,544	10,954	12,041	11,865	11,472	12,148	11,843	12,757	11,836	12,440	12,605	13,630	145,135	126,738	15%
Interisland	21,281	17,884	20,549	19,407	19,807	20,006	18,779	19,802	18,879	19,577	16,266	22,382	236,631	259,908	-9%
Deplaned	10,640	8,942	10,274	9,704	9,904	10,004	9,390	9,901	9,439	9,788	9,133	11,196	118,316	129,959	-10%
Enplaned	10,640	8,942	10,274	9,704	9,904	10,004	9,388	9,901	9,439	9,788	9,133	11,196	118,316	129,949	-9%
International	7,985	6,405	8,271	7,927	8,936	8,394	9,380	10,674	9,985	9,851	9,993	10,639	108,442	88,948	22%
Deplaned	4,083	3,121	4,476	3,489	4,395	4,594	4,915	5,787	5,142	5,345	5,774	5,867	56,986	41,603	37%
Enplaned	3,902	3,283	3,796	4,439	4,542	3,800	4,465	4,887	4,844	4,506	4,219	4,773	51,455	47,345	9%
Grand Total	64,177	56,162	63,619	62,714	63,957	64,487	64,609	67,525	63,917	66,221	65,608	72,837	775,832	750,245	3%

II-A. Monthly Deplaned (Inbound) Air Cargo (Freight & Mail in U.S. Tons) Per Origin Class Per Airport

Origin/Airport	January	February	March	April	May	June	July	August	September	October	November	December	Grand Total	Prior Year	% Change
Domestic Overseas	23,368	20,919	22,759	23,514	23,742	23,937	24,607	24,292	23,216	24,353	24,743	26,175	285,625	274,651	4%
Daniel K. Inouye Int'l (HNL)	20,976	19,669	21,456	22,145	22,188	22,506	23,162	22,844	21,875	22,799	23,162	24,360	267,144	257,115	4%
Ellison Onizuka Kona Int'l (KOA)	79	122	128	116	105	105	108	111	92	83	87	99	1,288	1,004	28%
Hilo Int'l (ITO)	-	-	-	-	-	-	-	-	-	-	-	-	-	1	-100%
Kahului (OGG)	1,063	1,018	1,149	1,228	1,423	1,277	1,306	1,315	1,230	1,221	1,451	1,658	15,340	13,026	18%
Lihue (LIH)	1,250	110	26	25	26	25	32	22	18	239	43	58	1,874	3,505	-47%
Interisland	10,640	8,942	10,274	9,704	9,904	10,004	9,390	9,901	9,439	9,788	9,133	11,196	118,316	129,959	-9%
Daniel K. Inouye Int'l (HNL)	3,879	2,590	2,784	2,635	2,852	2,675	2,416	2,745	2,512	2,796	2,164	2,363	32,123	38,200	-16%
Ellison Onizuka Kona Int'l (KOA)	1,883	1,723	1,915	1,789	1,820	1,902	1,658	1,778	1,857	1,770	1,718	1,718	2,852	22,675	-2%
Hana (HNM)	-	-	-	-	-	-	-	-	-	-	-	-	-	-	-
Hilo Int'l (ITO)	1,108	994	1,200	1,122	1,208	1,070	1,078	1,025	1,051	1,089	1,128	1,229	13,302	18,032	-26%
Kahului (OGG)	1,937	1,749	2,052	1,959	1,960	1,899	1,852	1,843	1,738	1,872	1,799	2,112	22,770	27,067	-16%
Kalaupapa (LUP)	3	4	8	6	4	7	8	11	5	4	3	5	69	65	5%
Kapalua (JHM)	133	133	121	78	130	127	120	132	65	86	85	67	1,277	1,120	14%
Lanai (LNY)	150	136	173	168	182	227	229	215	223	193	244	249	2,390	1,908	25%
Lihue (LIH)	1,352	1,506	1,788	1,735	1,866	1,813	1,934	1,794	1,788	1,793	2,098	2,102	17,713	17,713	20%
Molokai (MKK)	195	197	233	210	212	230	216	219	185	190	200	221	2,508	2,623	-4%
Waimea-Kohala (MUE)	-	-	-	-	-	-	-	-	-	-	-	-	-	-	-
International	4,083	3,121	4,476	3,489	4,395	4,594	4,915	5,787	5,142	5,345	5,774	5,867	56,986	41,603	37%
Daniel K. Inouye Int'l (HNL)	4,083	3,121	4,475	3,489	4,395	4,594	4,915	5,787	5,142	5,345	5,774	5,865	56,985	41,603	37%
Ellison Onizuka Kona Int'l (KOA)	-	-	-	-	-	-	-	-	-	-	-	1	1	-	-
Kahului (OGG)	-	-	0.2	-	-	-	-	-	-	-	0	0	0.3	0	-26%
Grand Total	38,091	32,983	37,509	36,706	38,040	38,535	38,912	39,980	37,797	39,486	39,650	43,238	460,928	446,212	3%

II-B. Monthly Enplaned (Outbound) Air Cargo (Freight & Mail in U.S. Tons) Per Destination Class Per Airport

Destination/Airport	January	February	March	April	May	June	July	August	September	October	November	December	Grand Total	Prior Year	% Change
Domestic Overseas	11,544	10,954	12,041	11,865	11,472	12,148	11,843	12,757	11,836	12,440	12,605	13,630	145,135	126,738	15%
Daniel K. Inouye Int'l (HNL)	10,901	10,221	11,164	11,113	10,772	11,442	11,117	12,000	11,240	11,614	11,894	12,821	136,298	119,890	14%
Ellison Onizuka Kona Int'l (KOA)	588	543	532	537	460	446	431	452	335	468	490	501	5,782	6,241	-7%
Hilo Int'l (ITO)	0	0	0	0	0	0	0	0	0	0	0	0	1	1	22%
Kahului (OGG)	54	53	173	31	40	51	49	38	32	49	45	63	677	582	16%
Lihue (LIH)	1	136	171	185	200	209	246	267	230	310	176	245	2,375	22	10541%
Interisland	10,640	8,942	10,274	9,704	9,904	10,004	9,388	9,901	9,439	9,788	9,133	11,196	118,316	129,949	-9%
Daniel K. Inouye Int'l (HNL)	6,403	6,176	7,113	6,788	7,005	7,176	6,829	7,090	6,708	6,882	6,926	7,883	82,979	84,557	-2%
Ellison Onizuka Kona Int'l (KOA)	559	446	567	466	449	455	343	403	477	451	311	309	5,236	7,665	-32%
Hana (HNM)	-	-	-	-	-	-	-	-	-	-	-	-	-	-	-
Hilo Int'l (ITO)	772	733	870	915	862	888	763	764	807	766	596	691	9,429	12,262	-23%
Kahului (OGG)	1,074	725	855	766	846	795	727	773	739	738	659	1,671	10,369	13,837	-25%
Kalaupapa (LUP)	1	1	1	3	2	2	2	3	2	2	2	1	21	21	0%
Kapalua (JHM)	28	25	33	26	32	24	25	29	27	22	22	24	317	245	29%
Lanai (LNY)	21	26	35	35	41	46	38	39	42	40	35	35	434	260	67%
Lihue (LIH)	1,750	777	758	663	629	581	628	759	601	852	551	544	9,094	10,684	-15%
Molokai (MKK)	32	32	43	40	39	38	34	41	35	33	31	37	435	418	4%
Waimea-Kohala (MUE)	-	-	-	-	-	-	-	-	-	-	-	-	-	-	-
International	3,902	3,283	3,796	4,439	4,542	3,800	4,465	4,887	4,844	4,506	4,219	4,773	51,455	47,345	9%
Daniel K. Inouye Int'l (HNL)	3,900	3,274	3,795	4,439	4,542	3,800	4,465	4,887	4,844	4,506	4,219	4,769	51,442	47,321	9%
Ellison Onizuka Kona Int'l (KOA)	1	-	-	-	-	-	-	-	-	-	-	3	4	0	1182%
Kahului (OGG)	-	9	0.1	-	-	-	-	-	-	-	-	-	10	24	-61%
Grand Total	26,086	23,179	26,111	26,008	25,917	25,952	25,697	27,545	26,119	26,734	25,958	29,599	314,905	304,032	4%

AIR TRAFFIC STATISTICS FOR CALENDAR YEAR 2022

II-C. Monthly Deplaned (Inbound) International Air Cargo (Freight & Mail in U.S. Tons) Per Airport Per Origin

Airport/Origin	January	February	March	April	May	June	July	August	September	October	November	December	Grand Total	Prior Year	% Change
Daniel K. Inouye Int'l (HNL)	4,083	3,121	4,475	3,489	4,395	4,594	4,915	5,787	5,142	5,345	5,774	5,865	56,985	41,603	37%
Australia	179	132	216	229	265	418	479	488	483	330	417	416	4,051	136	2881%
Canada	0	3	3	0		0	1	1	1	0	1	3	13	25	-47%
Europe						16							16		
Japan	1,641	920	1,863	978	1,886	1,992	2,108	2,972	2,449	2,947	3,108	3,119	25,985	18,681	39%
New Zealand							133	147	134	135	135	117	801		
Other Asia	2,199	1,980	2,266	2,197	2,054	2,134	2,122	2,095	2,006	1,813	2,013	2,126	25,004	20,929	19%
Other Pacific	64	87	127	85	173	49	72	84	68	121	100	86	1,115	1,832	-39%
Ellison Onizuka Kona Int'l (KOA)												1	1		
Canada															
Japan															
Other Asia												1	1		
Kahului (OGG)															-26%
Canada															-26%
Japan															
Other Asia															
Lihue (LIH)															
Canada															
Japan															
Other Asia															
Other Pacific															
Grand Total	4,083	3,121	4,475	3,489	4,395	4,594	4,915	5,787	5,142	5,345	5,774	5,867	56,986	41,603	37%

II-D. Monthly Enplaned (Outbound) International Air Cargo (Freight & Mail in U.S. Tons) Per Airport Per Destination

Airport/Destination	January	February	March	April	May	June	July	August	September	October	November	December	Grand Total	Prior Year	% Change
Daniel K. Inouye Int'l (HNL)	3,900	3,274	3,795	4,439	4,542	3,800	4,465	4,887	4,844	4,506	4,219	4,769	51,442	47,321	9%
Australia	2,091	1,742	2,267	2,344	1,422	2,200	2,598	2,747	2,476	2,276	2,195	2,451	26,839	28,014	-4%
Canada	119	137	143	0		24	39	42	41	60	61	92	758	222	242%
Europe					2								2		
Japan	387	239	165	482	639	384	438	446	471	513	401	433	4,997	1,742	187%
New Zealand	288	247	263	327	949	246	389	363	349	420	326	392	4,559	2,989	53%
Other Asia	554	365	555	767	817	719	691	770	638	593	611	742	7,842	7,178	9%
Other Pacific	461	524	404	519	713	228	311	519	869	643	625	629	6,444	7,176	-10%
Ellison Onizuka Kona Int'l (KOA)	1											3	4	0	1182%
Canada	1													1	0
Japan														3	3
Other Asia															
Kahului (OGG)	1	9											10	24	-61%
Canada	1	9												10	24
Japan															
Other Asia															
Lihue (LIH)															
Canada															
Japan															
Other Asia															
Other Pacific															
Grand Total	3,902	3,283	3,796	4,439	4,542	3,800	4,465	4,887	4,844	4,506	4,219	4,773	51,455	47,345	9%

AIR TRAFFIC STATISTICS FOR CALENDAR YEAR 2022

III. Monthly Itinerant Aircraft Operations Per Airport

Airport/Aircraft Class	January	February	March	April	May	June	July	August	September	October	November	December	Grand Total	Prior Year	% Change
Daniel K. Inouye Int'l (HNL)	23,727	22,511	26,427	26,110	26,997	26,604	28,298	29,245	26,487	26,871	26,152	26,976	316,405	274,771	15%
Air Carrier	11,458	10,262	12,216	11,763	12,066	11,924	12,807	12,744	12,071	12,248	12,317	13,705	145,581	125,073	16%
Air Taxi	6,573	7,072	8,459	8,636	8,993	8,955	9,795	9,911	8,504	8,988	8,109	8,063	102,058	89,883	14%
General Aviation	4,341	3,961	4,377	4,390	4,397	4,515	4,110	5,076	4,813	4,385	4,143	3,708	52,216	46,039	13%
Military	1,355	1,216	1,375	1,321	1,541	1,210	1,586	1,514	1,099	1,250	1,583	1,500	16,550	13,776	20%
Ellison Onizuka Kona Int'l (KOA)	5,836	5,456	6,071	5,438	5,766	5,394	5,714	5,878	4,988	4,981	4,981	6,031	66,590	60,798	10%
Air Carrier	2,686	2,426	3,000	2,824	2,971	3,068	3,259	3,170	2,753	2,803	2,670	2,845	34,475	30,574	13%
Air Taxi	1,124	1,087	1,263	1,005	1,033	826	916	915	767	825	810	1,288	11,859	11,931	-1%
General Aviation	1,798	1,721	1,652	1,432	1,510	1,344	1,310	1,563	1,284	1,285	1,336	1,731	17,966	15,535	16%
Military	228	222	156	177	252	156	229	190	184	164	165	167	2,290	2,758	-17%
Hilo Int'l (ITO)	2,930	2,631	3,064	2,799	3,012	3,185	3,481	3,508	3,170	2,967	2,964	3,296	37,007	30,002	23%
Air Carrier	1,094	893	1,138	1,155	1,193	1,227	1,310	1,285	1,201	1,230	1,266	1,380	14,372	13,123	10%
Air Taxi	1,435	1,322	1,553	1,332	1,425	1,574	1,738	1,710	1,524	1,429	1,249	1,516	17,807	9,377	90%
General Aviation	248	257	249	282	229	229	224	247	291	189	273	287	2,944	6,043	-51%
Military	153	159	124	124	132	155	209	266	154	119	176	113	1,894	1,459	29%
Kahului (OGG)	11,417	10,539	12,423	11,684	11,834	12,437	12,748	12,406	11,202	11,199	10,978	12,077	141,944	126,773	9%
Air Carrier	4,869	4,569	5,340	5,114	5,160	5,284	5,651	5,384	4,904	4,912	5,098	5,493	61,778	54,081	14%
Air Taxi	5,016	4,613	5,739	5,459	5,626	5,901	5,979	5,715	5,143	5,180	4,781	5,280	64,432	56,838	8%
General Aviation	1,417	1,214	1,248	1,020	1,063	1,154	1,027	1,166	1,079	995	1,008	1,126	13,517	14,447	-6%
Military	115	143	96	91	85	98	91	141	76	112	91	178	1,317	1,407	-6%
Kalaheo (JRF)	2,637	2,528	2,885	2,571	2,525	2,656	3,081	3,301	3,245	2,822	2,339	1,728	32,318	29,921	8%
Air Carrier	-	-	-	-	-	-	-	-	-	-	-	-	-	-	-
Air Taxi	-	-	-	-	-	-	-	-	-	-	-	-	-	-	-
General Aviation	2,139	2,013	2,310	2,042	2,034	2,076	2,310	2,594	2,610	2,328	1,737	1,455	25,648	23,178	11%
Military	498	515	575	529	491	580	771	707	635	494	602	273	6,670	6,743	-1%
Kapalua (JHM)	218	200	219	187	226	233	307	241	213	206	214	217	2,681	2,731	-2%
Air Carrier	-	-	-	-	-	-	-	-	-	-	-	-	-	-	-
Air Taxi	209	199	219	183	220	223	301	235	205	194	213	217	2,618	2,721	-4%
General Aviation	9	1	4	4	6	10	6	6	8	12	1	-	63	10	530%
Military	-	-	-	-	-	-	-	-	-	-	-	-	-	-	-
Lihue (LIH)	7,908	7,910	9,110	8,832	8,903	9,979	10,158	10,453	9,491	9,517	8,779	8,852	109,892	73,980	49%
Air Carrier	2,293	2,099	2,587	2,527	2,614	2,667	2,836	2,785	2,575	2,568	2,517	2,607	30,845	22,798	34%
Air Taxi	5,069	5,345	5,303	5,710	5,798	6,791	7,087	6,513	6,510	5,749	5,795	5,795	73,003	45,512	54%
General Aviation	380	318	502	440	396	442	405	410	294	358	396	359	4,700	4,048	16%
Military	146	148	148	155	95	153	130	171	109	81	117	91	1,544	1,322	17%
Molokai (MKK)	2,505	2,451	2,762	2,709	2,823	2,703	2,910	2,869	2,746	2,785	2,784	2,684	32,731	25,777	27%
Air Carrier	2,163	2,126	2,393	2,397	2,542	2,356	2,596	2,569	2,461	2,489	2,473	2,392	28,957	21,821	33%
Air Taxi	295	306	346	286	251	316	293	268	244	259	286	277	3,437	3,619	-9%
General Aviation	47	19	23	26	20	31	21	32	41	37	25	15	337	337	-
Military	-	-	-	-	-	-	-	-	-	-	-	-	-	-	-
Grand Total	57,178	54,226	62,961	60,330	62,186	63,191	66,697	67,861	61,542	61,444	59,191	61,861	738,668	624,753	18%

III-A. Monthly Local Aircraft Operations Per Airport

Airport/Aircraft Class	January	February	March	April	May	June	July	August	September	October	November	December	Grand Total	Prior Year	% Change
Daniel K. Inouye Int'l (HNL)	-	-	7	-	12	-	-	-	-	8	-	-	27	14	93%
General Aviation	-	-	7	-	12	-	-	-	-	8	-	-	27	10	170%
Military	-	-	-	-	-	-	-	-	-	-	-	-	-	4	-100%
Dillingham Field (HDH)	2,310	2,356	2,914	2,846	2,508	2,381	2,720	3,363	3,520	2,750	2,979	2,854	33,501	31,556	6%
Civilian Power	1,778	1,782	2,290	2,294	1,882	1,809	1,986	2,711	2,678	2,052	2,205	2,140	25,808	23,892	8%
Glider	236	216	322	314	318	316	390	294	290	362	493	570	4,081	3,252	25%
Military	296	358	302	238	308	256	344	368	382	336	280	144	3,612	4,412	-18%
Ellison Onizuka Kona Int'l (KOA)	2,915	3,548	3,538	3,373	2,774	2,529	2,709	2,834	3,160	3,471	3,456	3,610	37,917	35,956	5%
General Aviation	2,689	3,282	3,262	3,126	2,419	2,385	2,439	2,590	2,962	3,225	3,250	3,353	34,982	32,585	7%
Military	226	266	276	247	355	144	270	244	198	246	206	257	2,935	3,371	-13%
Hilo Int'l (ITO)	712	832	676	610	915	962	921	1,352	819	739	896	588	10,022	6,524	54%
General Aviation	551	522	488	492	759	537	583	1,017	736	620	778	494	7,577	4,830	57%
Military	161	310	188	118	156	425	338	335	83	119	118	94	2,445	1,694	44%
Kahului (OGG)	836	645	917	731	624	548	801	528	732	696	867	842	8,767	11,911	-26%
General Aviation	826	639	907	725	602	542	801	528	732	696	864	834	8,696	11,750	-26%
Military	10	6	10	6	22	6	21	32	41	37	25	15	337	337	-
Kalaheo (JRF)	12,971	13,144	13,295	11,753	11,981	12,235	12,285	14,718	13,191	12,817	12,191	11,384	151,365	152,985	-1%
General Aviation	11,624	11,502	11,669	10,457	10,548	10,927	11,094	13,256	11,706	11,924	11,230	10,698	136,635	135,922	1%
Military	1,347	1,642	1,626	1,296	833	1,308	1,191	1,462	1,485	893	961	686	14,730	16,463	-11%
Kapalua (JHM)	-	-	-	-	-	-	-	-	-	-	-	-	-	2	-100%
General Aviation	-	-	-	-	-	-	-	-	-	-	-	-	-	2	-100%
Military	-	-	-	-	-	-	-	-	-	-	-	-	-	-	-
Lihue (LIH)	848	896	1,039	989	1,003	992	1,017	1,031	1,418	1,513	1,225	1,142	13,113	9,255	42%
General Aviation	816	868	1,007	967	977	988	985	1,001	1,416	1,509	1,217	1,140	12,891	8,722	48%
Military	32	28	32	22	26	4	32	30	2	4	8	2	222	533	-58%
Molokai (MKK)	64	50	97	34	19	30	19	112	174	72	124	47	842	890	-5%
General Aviation	64	41	91	31	14	30	9	89	74	42	74	47	606	719	-16%
Military	3	9	6	3	5	3	10	23	100	30	50	17	236	17	

AIR TRAFFIC STATISTICS FOR CALENDAR YEAR 2022

III-B. Monthly Landings (Arrivals) Per Airport Per Service Type As Reported by Aircraft Operators

Airport/Service Type	January	February	March	April	May	June	July	August	September	October	November	December	Grand Total	Prior Year	% Change
Daniel K. Inoué Int'l (HNL)	8,749	8,212	9,902	9,778	9,582	9,832	10,576	10,690	9,866	9,993	9,839	10,531	117,650	98,820	18.95%
Passenger	5,344	4,831	5,927	5,834	5,947	5,940	6,442	6,377	5,913	6,176	6,029	6,408	71,168	56,944	24.98%
Passenger-Charter	150	175	196	212	206	225	277	210	197	172	125	138	2,283	1,899	20.22%
Passenger-Government Charter	14	20	2	19	15	22	18	24	16	18	2	17	187	182	2.75%
Passenger-Tour Operator	1,095	1,242	1,573	1,677	1,517	1,546	1,811	1,909	1,692	1,610	1,747	1,803	19,222	14,716	30.52%
Cargo	1,301	1,269	1,472	1,290	1,350	1,359	1,307	1,464	1,322	1,336	1,183	1,338	15,991	15,891	0.69%
Cargo-Government Charter	12	6	34	18	23	22	26	18	16	16	29	20	240	177	35.59%
Ferry Flight	602	504	497	532	372	498	504	466	525	486	519	557	6,062	7,237	-16.24%
Fuel/Tech Stop	5	6	4	4	13	18	10	5	18	7	5	3	98	18	444.44%
Fixed Base Operator	226	159	197	139	199	181	217	167	177	172	200	247	2,299	1,766	30.18%
Dillingham Field (HDH)	435	397	501	466	508	493	495	498	441	427	364	418	5,443	5,961	-8.69%
Passenger-Tour Operator	435	397	501	466	508	493	495	498	441	427	364	418	5,443	5,955	-8.60%
Cargo	-	-	-	-	-	-	-	-	-	-	-	-	-	3	-100.00%
Ferry Flight	-	-	-	-	-	-	-	-	-	-	-	-	-	3	-100.00%
Ellison Onizuka Kona Int'l (KOA)	2,282	1,986	2,423	2,212	2,246	2,259	2,367	2,424	2,058	2,058	2,042	2,557	26,914	25,119	7.15%
Passenger	1,517	1,362	1,686	1,560	1,632	1,639	1,787	1,718	1,473	1,476	1,454	1,639	18,995	17,013	11.05%
Passenger-Charter	95	100	112	109	128	123	135	123	103	76	46	162	1,312	1,056	24.24%
Passenger-Tour Operator	139	123	149	122	113	59	75	195	153	133	88	278	1,627	1,802	-9.71%
Cargo	192	169	188	180	189	192	172	186	177	184	206	196	2,231	2,337	-4.54%
Cargo-Government Charter	-	-	-	-	-	-	-	-	-	-	-	-	-	-	-
Ferry Flight	41	36	51	44	37	42	49	42	37	62	42	36	519	628	-17.36%
Fixed Base Operator	298	196	237	197	147	154	149	160	115	125	206	246	2,230	2,283	-2.32%
Hana (HNM)	91	82	157	87	65	90	95	87	82	78	59	85	1,058	935	13.16%
Passenger	61	55	65	60	62	60	63	64	57	56	59	59	721	710	1.55%
Passenger-Charter	-	1	1	-	-	-	-	-	-	-	-	-	2	-	42.79%
Passenger-Tour Operator	28	26	66	27	3	30	32	23	25	22	-	25	307	215	42.79%
Ferry Flight	-	-	25	-	-	-	-	-	-	-	-	-	10	28	100.00%
Hilo Int'l (ITO)	1,328	1,067	1,288	1,235	1,200	1,293	1,398	1,611	1,430	1,228	1,218	1,237	15,533	12,172	27.61%
Passenger	553	463	590	593	622	639	675	665	617	632	629	678	7,356	5,870	25.32%
Passenger-Charter	1	2	1	2	2	-	2	1	2	1	-	-	12	16	-25.00%
Passenger-Tour Operator	501	372	442	409	346	443	520	722	642	451	398	357	5,603	3,237	73.09%
Cargo	235	198	167	195	167	168	167	184	115	110	145	135	2,063	2,344	-12.41%
Ferry Flight	34	26	34	28	39	34	31	51	28	45	52	43	660	660	-34.39%
Fixed Base Operator	4	6	4	10	4	9	3	8	3	6	4	15	76	45	68.89%
Kahului (OGG)	5,279	4,805	5,781	5,593	5,589	5,828	6,187	5,942	5,337	5,325	5,230	5,695	66,591	58,543	13.75%
Passenger	3,284	3,071	3,633	3,435	3,460	3,557	3,810	3,689	3,313	3,392	3,396	3,552	41,592	36,658	13.46%
Passenger-Charter	1	2	3	2	3	4	5	2	1	1	1	4	32	34	-5.88%
Passenger-Government Charter	-	-	-	-	-	-	-	-	-	-	-	-	-	-	-
Passenger-Tour Operator	1,352	1,221	1,584	1,540	1,620	1,727	1,883	1,745	1,496	1,407	1,283	1,576	18,434	15,464	19.21%
Cargo	283	295	349	325	334	333	304	320	344	325	253	242	3,707	3,461	2.66%
Ferry Flight	65	46	45	93	54	70	53	52	86	85	108	120	877	860	1.98%
Fixed Base Operator	293	170	167	198	117	137	132	134	97	115	186	201	1,947	1,916	1.62%
Kalaheo (JRF)	61	72	82	73	61	38	34	46	21	14	20	14	536	543	-1.29%
Passenger	-	-	-	-	-	-	-	-	-	-	-	-	-	1	-
Passenger-Charter	2	4	-	1	2	1	1	-	-	-	-	-	10	22	-54.55%
Passenger-Tour Operator	41	36	61	58	47	27	17	34	20	13	12	8	374	406	-7.88%
Cargo	3	2	-	-	3	1	1	2	1	-	1	3	19	6	216.67%
Ferry Flight	15	30	19	14	9	9	15	10	-	1	7	3	132	109	21.10%
Kalauapapa (LUP)	143	141	172	160	167	158	161	185	151	151	140	155	1,884	1,494	26.95%
Passenger	124	120	148	138	148	135	140	160	130	128	119	133	1,621	1,176	37.84%
Passenger-Charter	-	-	-	-	-	-	-	-	-	-	-	-	-	-	-
Passenger-Tour Operator	-	-	-	-	-	-	-	-	-	-	21	22	43	-	-
Cargo	19	20	24	22	21	23	21	24	21	23	-	-	2	308	-29.22%
Ferry Flight	-	1	-	-	-	-	-	-	-	-	-	-	-	2	-
Kapahulu (HHM)	189	171	189	160	198	203	197	209	149	155	156	142	2,119	1,807	17.27%
Passenger	108	102	111	107	123	120	123	121	100	99	94	95	1,303	1,040	25.29%
Passenger-Charter	4	-	-	-	-	2	2	1	1	-	-	-	10	9	11.11%
Passenger-Tour Operator	-	-	-	-	-	-	-	-	-	-	-	-	1	1	-
Cargo	75	69	78	50	75	74	70	84	47	56	59	47	784	722	8.59%
Ferry Flight	2	1	2	3	7	7	2	2	1	3	3	21	35	21	-40.00%
Lanai (LNY)	850	870	985	1,056	1,061	1,103	1,442	1,146	1,089	1,031	1,080	1,069	12,762	11,005	16.15%
Passenger	326	317	382	477	475	472	433	464	412	424	398	375	4,955	3,668	35.09%
Passenger-Charter	10	8	9	8	10	9	10	6	5	4	5	9	93	112	-16.96%
Passenger-Tour Operator	294	324	374	340	361	354	381	428	366	359	550	548	4,679	4,360	7.32%
Cargo	145	146	162	153	161	193	195	191	195	181	35	46	1,803	1,818	-0.83%
Ferry Flight	47	48	31	52	48	53	411	43	99	51	71	57	1,011	735	37.55%
Fixed Base Operator	28	27	27	26	6	22	12	14	12	12	21	34	241	312	-22.78%
Lihue (LIH)	3,915	3,808	4,294	4,351	4,623	4,982	5,158	5,054	4,511	4,746	4,338	4,664	54,444	34,755	56.65%
Passenger	1,149	1,044	1,269	1,231	1,289	1,341	1,425	1,375	1,257	1,268	1,274	1,327	15,249	11,190	36.27%
Passenger-Charter	374	418	377	436	520	508	437	475	496	383	377	343	5,144	3,312	55.31%
Passenger-Tour Operator	2,012	2,011	2,259	2,320	2,452	2,741	2,938	2,844	2,435	2,717	2,298	2,636	29,663	16,095	84.30%
Cargo	212	198	219	205	230	230	217	218	206	212	208	226	2,557	2,512	1.79%
Ferry Flight	90	86	120	97	119	99	84	85	127	98	88	62	1,156	1,031	12.12%
Fixed Base Operator	78	51	50	62	37	63	42	58	32	39	83	80	675	615	9.76%
Molokai (MKK)	1,135	1,110	1,339	1,304	1,312	1,280	1,344	1,321	1,221	1,264	1,238	1,258	15,126	12,523	20.79%
Passenger	937	917	1,116	1,097	1,112	1,079	1,139	1,121	1,028	1,066	1,042	1,034	12,688	9,706	30.72%
Passenger-Charter	1	-	2	-	-										

AIR TRAFFIC STATISTICS FOR CALENDAR YEAR 2022

III-C. Monthly Landings (Arrivals) of Wide Body (WB) Aircraft at Five (5) Major Airports

Airports	January	February	March	April	May	June	July	August	September	October	November	December	Grand Total	Prior Year	% Change
Daniel K. Inouye Int'l (HNL)	1,501	1,375	1,541	1,464	1,396	1,450	1,627	1,699	1,530	1,513	1,683	1,943	18,722	15,618	20%
Ellison Onizuka Kona Int'l (KOA)	68	66	66	66	54	86	88	86	66	85	64	168	963	954	1%
Hilo Int'l (ITO)	-	-	1	1	1	-	-	-	-	-	1	-	7	2	250%
Kahului (OGG)	275	244	291	305	271	332	298	231	180	166	242	276	3,111	3,356	-5%
Lihue (LIH)	56	49	56	50	49	51	53	58	49	51	48	56	626	658	-5%
Grand Total	1,900	1,734	1,955	1,886	1,771	1,919	2,067	2,075	1,825	1,815	2,038	2,444	23,429	20,588	14%

III-D. Monthly Landings (Arrivals) Per Airport Per FAA's Airplane Design Group

Airports/Design Group	January	February	March	April	May	June	July	August	September	October	November	December	Grand Total	Prior Year	% Change
Daniel K. Inouye Int'l (HNL)	8,749	8,212	9,902	9,778	9,582	9,832	10,576	10,690	9,866	9,993	9,839	10,531	117,650	98,820	19%
VI	45	12	18	29	40	36	52	40	40	40	43	55	450	339	33%
V	1,344	1,220	1,379	1,366	1,291	1,282	1,517	1,559	1,304	1,369	1,405	1,687	16,723	12,807	31%
IV	581	571	707	626	562	547	534	530	610	620	632	738	7,258	7,575	-4%
III	3,759	3,292	3,963	3,868	3,978	4,153	4,368	4,341	4,146	4,232	4,276	4,488	48,903	41,611	18%
II	2,063	1,976	2,379	2,325	2,330	2,357	2,353	2,476	2,229	2,266	2,254	2,203	27,211	24,055	13%
I	955	1,141	1,436	1,544	1,381	1,457	1,752	1,474	1,537	1,466	1,229	1,360	17,002	12,418	37%
Unspecified	3	-	-	-	-	-	-	-	-	-	-	-	3	15	-80%
Dillingham Field (HDH)	435	397	501	466	508	493	495	498	441	427	364	418	5,443	5,961	-9%
II	412	376	470	425	476	454	454	460	405	378	301	378	4,989	5,715	-13%
I	23	21	31	41	32	39	41	38	36	49	63	40	454	246	85%
Ellison Onizuka Kona Int'l (KOA)	2,282	1,986	2,423	2,212	2,246	2,259	2,367	2,424	2,058	2,058	2,042	2,557	26,914	25,119	7%
V	45	41	52	36	26	59	51	46	9	34	22	120	541	560	-3%
IV	130	111	119	114	111	92	102	101	147	149	106	81	1,363	1,973	-31%
III	1,394	1,221	1,532	1,413	1,489	1,543	1,619	1,576	1,339	1,358	1,427	1,535	17,446	14,922	17%
II	478	389	454	419	379	334	362	309	302	348	367	456	4,758	4,758	0%
I	233	224	266	230	241	181	213	254	215	139	454	266	2,884	2,884	0%
Unspecified	2	-	-	-	-	-	-	-	-	-	-	-	2	22	-91%
Hana (HNM)	91	82	157	87	65	90	95	87	82	78	59	85	1,058	935	13%
II	61	55	65	60	62	60	63	64	57	56	59	59	721	710	2%
I	30	27	92	27	3	30	32	23	25	22	-	26	337	225	50%
Hilo Int'l (ITO)	1,328	1,067	1,288	1,235	1,200	1,293	1,398	1,611	1,430	1,228	1,218	1,237	15,633	12,172	28%
V	-	-	1	1	1	-	-	-	-	-	1	-	5	2	150%
IV	-	-	1	-	-	-	1	-	-	-	-	1	5	3	67%
III	547	457	584	592	613	632	658	663	617	641	672	707	7,383	6,536	13%
II	251	212	226	209	208	184	190	191	140	108	122	152	2,193	2,016	9%
I	530	398	476	433	378	477	549	756	673	479	422	376	5,947	3,614	65%
Unspecified	-	-	-	-	-	-	-	-	-	-	-	-	-	1	-
Kahului (OGG)	5,279	4,805	5,781	5,593	5,589	5,828	6,187	5,942	5,337	5,325	5,230	5,695	66,591	58,543	14%
V	360	341	417	336	219	335	287	228	182	164	247	279	3,395	2,700	26%
IV	162	173	194	182	175	137	166	156	121	90	74	105	1,735	3,100	-44%
III	2,184	1,961	2,337	2,302	2,389	2,409	2,648	2,599	2,375	2,469	2,500	2,649	28,822	24,177	19%
II	1,167	1,098	1,234	1,204	1,161	1,186	1,178	1,136	1,154	1,143	1,128	1,128	13,864	12,848	9%
I	1,386	1,232	1,599	1,569	1,645	1,761	1,908	1,784	1,523	1,448	1,266	1,534	18,655	15,718	19%
Kaalaeo (JRF)	61	72	82	73	61	38	34	46	21	14	20	14	536	543	-1%
II	-	-	-	-	-	-	-	-	-	-	-	-	1	1	-
I	57	72	82	73	61	38	34	46	21	14	20	13	531	524	1%
Unspecified	4	-	-	-	-	-	-	-	-	-	-	-	4	19	-73%
Kalaupapa (LUP)	143	141	172	160	167	158	161	185	151	151	140	155	1,884	1,484	27%
I	143	141	172	160	167	158	161	184	151	151	140	155	1,883	1,484	27%
Unspecified	-	-	-	-	-	-	-	-	-	-	-	-	1	1	-
Kapalua (JHM)	189	172	189	160	198	203	197	209	149	155	156	142	2,119	1,807	17%
III	183	171	189	160	198	200	194	208	148	155	156	142	2,104	1,791	17%
II	6	1	-	-	-	3	3	1	-	-	-	-	15	16	-6%
Lanai (LNY)	850	870	985	1,056	1,061	1,103	1,442	1,146	1,089	1,031	1,080	1,069	12,782	11,005	16%
III	7	3	2	5	-	3	12	8	81	9	39	28	197	76	159%
II	834	862	974	1,044	1,059	1,095	1,418	1,130	1,008	1,022	1,039	1,037	12,522	10,862	15%
I	7	5	9	7	2	5	12	8	-	-	2	4	61	67	-9%
Unspecified	2	-	-	-	-	-	-	-	-	-	-	-	2	2	-
Lihue (LIH)	3,915	3,808	4,294	4,351	4,623	4,982	5,158	5,054	4,511	4,746	4,338	4,664	54,444	34,755	57%
V	3	1	1	1	1	1	1	4	-	1	2	2	18	7	157%
IV	148	151	173	131	133	131	137	137	128	130	121	102	1,622	1,482	9%
III	1,164	1,041	1,260	1,262	1,301	1,353	1,437	1,391	1,273	1,291	1,310	1,404	15,487	11,460	35%
II	178	149	179	176	167	200	172	183	161	152	199	162	2,078	2,109	-1%
I	2,421	2,466	2,661	2,781	3,021	3,297	3,411	3,339	2,949	3,172	2,706	2,994	35,238	19,696	79%
Unspecified	1	-	-	-	-	-	-	-	-	-	-	-	1	1	-
Molokai (MKK)	1,135	1,110	1,339	1,304	1,312	1,280	1,344	1,321	1,221	1,264	1,238	1,258	15,126	12,623	21%
III	-	-	-	-	-	-	-	-	-	-	-	-	-	28	-100%
II	1,134	1,109	1,337	1,303	1,310	1,280	1,343	1,321	1,221	1,264	1,236	1,256	15,114	12,477	21%
I	1	1	2	1	2	-	-	-	-	-	2	2	12	18	-33%
Port Allen (PAK)	9	9	12	15	5	11	6	11	13	3	6	8	108	101	7%
II	-	-	-	-	-	-	-	-	-	-	-	-	-	-	-
I	9	9	12	15	5	11	6	11	13	3	6	8	108	101	7%
Unspecified	-	-	-	-	-	-	-	-	-	-	-	-	-	-	-
Upolu (UPP)	-	-	-	-	-	-	-	-	-	-	-	-	-	-	-
I	-	-	-	-	-	-	-	-	-	-	-	-	-	-	-
Waimea-Kohala (MUE)	82	72	70	65	70	72	76	76	90	60	61	59	853	971	-12%
I	67	62	62	59	61	61	62	62	61	59	60	58	734	730	1%
II	15	10	8	6	9	11	14								

AIR TRAFFIC STATISTICS FOR CALENDAR YEAR 2021

Statewide Monthly Air Traffic Per Origin/Destination (OD) Class (excluding Transits)															
OD Class/Air Traffic Type	January	February	March	April	May	June	July	August	September	October	November	December	Grand Total	Prior Year	% Change
Domestic Overseas															
Passengers	469,292	510,487	919,253	1,099,698	1,359,288	1,734,038	1,976,846	1,736,693	1,183,901	1,306,542	1,400,524	1,618,479	15,315,041	5,332,640	187%
Crew	42,021	38,727	49,715	53,937	62,978	74,553	85,754	81,752	71,539	72,979	72,439	80,235	786,629	273,240	188%
Carco (Freight & Mail in US Ton)	29,011	26,790	31,451	31,932	32,723	33,055	34,675	35,143	34,047	35,535	35,881	41,146	401,388	326,059	23%
Interisland															
Passengers	266,267	290,004	457,105	519,888	685,238	891,492	1,068,582	895,614	674,238	735,426	874,690	1,009,986	8,368,530	5,114,783	64%
Carco (Freight & Mail in US Ton)	22,104	19,073	22,310	21,879	21,573	22,174	20,230	19,841	18,639	21,451	23,571	27,062	259,908	256,834	1%
International															
Passengers	18,980	11,385	13,845	13,873	18,026	24,914	33,282	38,910	27,687	36,835	68,681	105,095	411,513	1,432,866	-71%
Crew	2,090	1,646	2,377	2,618	2,138	2,276	2,764	4,888	2,984	3,635	4,799	6,689	38,904	77,075	-50%
Carco (Freight & Mail in US Ton)	6,433	5,112	6,517	6,893	7,547	7,021	7,521	8,416	8,196	8,005	8,046	9,242	88,948	75,225	18%

Statewide Monthly Aircraft Operations per Aircraft Class per Itinerant/Local as accounted by the Air Traffic Control Tower (ATCT)															
Itinerant-Local/Aircraft Class	January	February	March	April	May	June	July	August	September	October	November	December	Grand Total	Prior Year	% Change
Itinerant															
Air Carrier	14,186	12,430	15,670	17,566	19,250	23,371	24,557	25,186	23,133	22,678	22,736	24,886	245,649	166,033	48%
Air Taxi	9,604	11,007	14,752	17,653	20,891	23,255	26,028	25,424	22,616	22,261	22,188	22,704	238,383	124,165	94%
General Aviation	7,737	7,432	8,672	10,188	10,306	10,775	10,474	9,642	8,903	9,434	10,062	9,294	112,919	83,861	32%
Military	2,175	2,385	2,122	2,363	2,407	2,523	2,100	2,762	2,411	2,350	2,158	2,046	27,802	25,524	9%
Local															
Civilian Power	20,964	20,269	20,325	23,116	23,137	21,296	20,087	19,953	21,143	19,965	20,050	18,188	248,493	253,232	-2%
General Aviation	1,132	1,432	1,578	2,398	3,388	2,176	2,302	1,785	1,334	1,898	1,874	1,687	23,892	12,566	90%
Glider	17,318	17,096	17,107	17,673	16,741	17,002	15,158	15,239	16,252	15,279	15,426	14,247	194,538	212,436	-8%
Military	174	156	298	570	242	288	248	202	290	256	290	238	3,252	2,426	34%
Grand Total	54,666	53,523	61,541	70,886	75,991	81,220	83,246	82,967	78,206	76,688	77,194	77,118	873,246	652,815	34%

I. Monthly Enplaned/Deplaned Air Passengers Per Origin/Destination (OD) Class (excluding Transit Passengers)															
OD Class/Deplaned-Enplaned	January	February	March	April	May	June	July	August	September	October	November	December	Grand Total	Prior Year	% Change
Domestic Overseas															
Deplaned	218,522	265,260	487,611	531,571	699,498	886,280	995,399	817,758	588,884	655,499	709,880	838,817	7,694,979	2,634,432	192%
Enplaned	250,770	245,227	431,642	568,127	658,790	847,758	981,447	918,934	595,017	651,043	690,644	773,662	7,620,062	2,693,208	182%
Interisland															
Deplaned	266,267	290,004	457,105	519,888	685,238	891,492	1,068,582	895,614	674,238	735,426	874,690	1,009,986	8,368,530	5,114,544	64%
Enplaned	133,132	145,070	228,472	259,944	342,619	445,746	534,291	447,807	337,375	367,432	437,345	504,993	4,184,226	2,557,235	64%
International															
Deplaned	18,980	11,385	13,845	13,873	18,026	24,914	33,282	38,910	27,687	36,835	68,681	105,095	411,513	1,432,866	-71%
Enplaned	8,892	5,701	7,073	7,799	9,566	13,221	17,236	21,653	13,628	19,387	36,295	58,435	218,886	697,632	-69%
Grand Total	754,539	811,876	1,390,203	1,633,459	2,062,552	2,650,444	3,076,710	2,671,217	1,885,826	2,078,803	2,343,898	2,733,660	24,095,084	11,880,050	103%

I-A. Monthly Deplaned (Inbound) Air Passengers Per Origin Class Per Airport (excluding Transit Passengers)															
Origin Class/Airport	January	February	March	April	May	June	July	August	September	October	November	December	Grand Total	Prior Year	% Change
Domestic Overseas															
Daniel K. Inouye Int'l (HNL)	121,141	133,933	248,925	289,049	364,908	455,010	521,916	430,217	306,479	334,807	372,628	443,605	4,002,618	1,495,418	168%
Ellison Onizuka Kona Int'l (KOA)	29,842	39,377	69,176	65,873	83,092	106,083	114,972	91,608	63,890	75,482	83,976	104,632	928,003	300,186	209%
Hilo Int'l (ITO)	-	-	592	1,122	1,206	3,037	4,203	3,997	1,887	2,159	2,520	2,769	23,492	6,045	289%
Kahului (OGG)	65,694	89,041	163,235	169,813	200,404	246,945	288,907	218,894	159,427	178,366	184,130	211,968	2,156,824	634,750	240%
Lihue (LIH)	1,845	2,909	5,683	25,714	49,898	75,205	85,401	73,042	57,201	64,685	66,626	75,843	584,042	199,033	195%
Interisland															
Daniel K. Inouye Int'l (HNL)	64,389	66,223	107,019	120,612	157,566	197,097	237,679	196,409	147,683	147,626	190,410	222,692	1,855,405	1,165,429	59%
Ellison Onizuka Kona Int'l (KOA)	16,206	19,269	29,014	31,705	39,338	54,402	65,178	53,418	40,014	48,020	55,653	61,983	514,700	304,400	69%
Hana (HNM)	68	76	133	133	179	258	269	173	176	200	205	195	2,065	928	123%
Hilo Int'l (ITO)	13,200	12,764	19,847	19,412	27,362	34,871	43,187	34,182	27,466	37,762	41,185	48,475	359,713	238,164	51%
Kahului (OGG)	24,693	26,492	43,562	49,472	67,225	92,406	111,286	95,984	70,062	73,068	85,995	100,123	840,368	484,703	73%
Kaunaloa (JRF)	-	-	-	-	-	-	-	-	-	-	-	-	-	-	-
Kalaupapa (LUP)	48	48	65	84	247	386	516	386	461	612	681	685	4,219	2,378	77%
Kapalua (JHM)	166	222	285	338	586	693	763	768	554	588	616	625	6,204	8,811	-30%
Lana'i (LNY)	1,885	2,289	3,239	3,486	3,844	4,341	4,810	4,548	3,640	3,950	3,950	3,850	43,832	20,981	109%
Lihue (LIH)	9,031	12,096	20,087	29,719	39,903	54,099	62,673	55,563	42,117	49,077	52,026	58,630	485,021	274,616	77%
Mokaa'i (MKK)	3,274	3,709	5,035	4,799	5,597	6,823	7,544	6,079	4,932	6,171	6,284	7,367	67,614	54,478	24%
Upolu (LPP)	-	-	-	-	-	-	-	-	-	-	-	-	-	-	-
Waimea-Kohala (MUE)	172	1,882	186	184	272	370	386	297	270	358	340	368	5,085	2,347	117%
International															
Daniel K. Inouye Int'l (HNL)	7,016	5,511	6,993	7,652	9,532	13,221	16,938	19,673	12,256	15,045	21,982	37,693	173,512	593,364	-71%
Ellison Onizuka Kona Int'l (KOA)	304	21	-	-	-	-	-	-	146	2,251	3,274	5,996	38,112	-84%	
Kahului (OGG)	1,572	169	80	147	34	-	298	1,980	1,372	4,092	10,577	15,743	36,064	55,927	-38%
Lihue (LIH)	-	-	-	-	-	-	-	-	-	104	1,485	1,725	3,314	10,229	-68%
Grand Total	360,546	416,031	723,156	799,314	1,051,683	1,345,247	1,546,926	1,287,218	939,887	1,042,318	1,183,520	1,402,245	12,098,091	5,889,299	105%

AIR TRAFFIC STATISTICS FOR CALENDAR YEAR 2021

I-B. Monthly Enplaned (Outbound) Air Passengers Per Destination Class Per Airport (excluding transit Passengers)

Destination Class/Airport	January	February	March	April	May	June	July	August	September	October	November	December	Grand Total	Prior Year	% Change
Domestic Overseas	250,770	245,227	431,642	568,127	659,790	847,758	981,447	919,935	595,017	651,043	690,644	779,662	7,620,062	2,698,208	182%
Daniel K. Inouye Int'l (HNL)	136,005	127,009	227,607	292,847	351,078	442,815	518,199	481,709	316,369	338,161	362,794	427,954	4,022,547	1,507,032	167%
Ellison Onizuka Kona Int'l (KOA)	35,002	35,345	58,698	71,854	76,146	99,177	112,018	105,048	62,401	70,080	80,419	90,667	896,875	305,078	194%
Hilo Int'l (ITO)	-	-	792	844	1,347	3,412	4,076	3,165	1,793	2,005	2,478	3,103	23,115	5,717	304%
Kahului (OGG)	78,354	80,242	137,937	178,649	187,310	231,146	264,335	247,681	158,569	176,921	179,847	190,786	2,111,777	663,385	218%
Lihue (LIH)	1,409	2,631	6,608	23,833	43,909	71,208	82,819	81,332	55,885	63,876	65,106	67,132	565,748	216,996	161%
Interisland	133,135	144,934	228,633	259,944	342,619	445,746	534,291	447,807	336,863	367,994	437,345	504,993	4,184,304	2,557,309	64%
Daniel K. Inouye Int'l (HNL)	57,459	66,941	104,647	116,580	155,067	193,236	229,654	193,814	145,417	177,468	193,604	221,210	1,855,097	1,150,356	61%
Ellison Onizuka Kona Int'l (KOA)	18,830	18,894	31,391	34,364	41,862	56,680	67,638	56,277	41,511	51,948	51,899	63,934	535,208	315,285	70%
Hana (HNM)	83	83	118	177	223	252	307	216	189	234	215	231	2,328	981	137%
Hilo Int'l (ITO)	14,298	12,683	19,967	19,983	27,182	34,347	43,170	32,546	27,091	37,269	40,112	45,339	353,987	239,360	48%
Kahului (OGG)	27,874	28,880	46,175	53,794	68,482	96,642	114,877	94,716	70,412	81,553	87,553	104,279	875,237	478,624	83%
Kalaheo (JRF)	-	-	-	-	-	-	-	-	-	-	-	-	-	-	-
Kalaupapa (LUP)	31	40	64	86	151	249	267	184	187	210	208	424	2,101	1,878	12%
Kapulu (JHM)	186	233	282	323	497	655	769	716	490	573	572	546	5,842	8,764	-33%
Lanai (LNY)	2,079	2,270	3,144	3,626	3,781	4,267	4,944	4,612	3,421	3,993	3,992	3,342	43,471	21,580	101%
Lihue (LIH)	8,608	11,113	17,687	25,855	39,285	52,214	64,617	57,900	42,763	8,119	52,427	58,453	439,041	283,008	55%
Molokai (MKK)	3,517	3,633	4,957	4,965	5,805	6,867	7,680	6,530	5,126	6,297	6,404	6,866	68,647	55,129	25%
Upolu (UPP)	4	-	-	-	-	-	-	-	-	-	-	-	4	-	-
Waimea-Kohala (MUE)	166	164	201	191	284	357	368	296	256	330	359	369	3,341	2,344	43%
International	10,088	5,684	6,772	6,074	8,460	11,693	16,046	17,257	14,059	17,448	32,386	46,660	192,627	735,234	-74%
Daniel K. Inouye Int'l (HNL)	7,471	5,156	6,605	5,862	8,391	11,693	16,029	15,488	12,805	14,649	21,085	30,579	155,813	622,278	-75%
Ellison Onizuka Kona Int'l (KOA)	85	38	-	-	-	-	-	-	-	18	1,505	2,636	4,282	40,021	-89%
Kahului (OGG)	2,532	490	167	212	69	-	17	1,769	1,254	2,763	8,564	12,147	29,984	61,519	-51%
Lihue (LIH)	-	-	-	-	-	-	-	-	-	18	1,232	1,298	2,548	11,416	-78%
Grand Total	393,993	395,845	667,047	834,145	1,010,869	1,305,197	1,531,784	1,383,999	945,939	1,036,485	1,160,375	1,331,315	11,996,993	5,990,751	100%

I-C. Monthly Deplaned (Inbound) International Air Passengers Per Airport Per Origin (excluding transits)

Airport/Origin	January	February	March	April	May	June	July	August	September	October	November	December	Grand Total	Prior Year	% Change
Daniel K. Inouye Int'l (HNL)	7,016	5,111	6,993	7,652	9,532	13,221	16,938	19,873	12,256	16,045	21,982	37,693	173,512	593,364	-71%
Australia	-	-	-	-	94	-	-	-	-	-	-	-	3,770	3,864	-93%
Canada	702	89	44	-	-	-	-	2,127	1,171	3,051	7,057	14,770	29,011	49,189	-41%
Europe	-	-	-	-	-	-	-	-	-	-	-	-	-	-	-
Japan	2,457	1,321	1,817	2,325	2,149	2,926	4,645	4,081	2,464	3,104	3,550	5,138	35,977	333,240	-89%
New Zealand	-	-	-	-	-	-	-	-	-	-	-	-	-	18,590	-100%
Other Asia	3,788	3,827	4,723	4,950	6,877	9,365	11,372	11,090	7,856	7,920	10,265	12,841	94,874	127,950	-26%
Other Pacific	59	274	409	377	412	930	921	2,375	765	970	1,110	1,174	9,786	12,067	-19%
Ellison Onizuka Kona Int'l (KOA)	304	21	-	-	-	-	-	-	-	146	2,251	3,274	5,996	38,112	-84%
Canada	304	21	-	-	-	-	-	-	-	146	2,251	3,274	5,996	19,292	-69%
Japan	-	-	-	-	-	-	-	-	-	-	-	-	-	18,820	-100%
Other Asia	-	-	-	-	-	-	-	-	-	-	-	-	-	-	-
Kahului (OGG)	1,572	169	80	147	34	-	298	1,980	1,372	4,092	10,577	15,743	36,064	55,927	-36%
Canada	1,572	169	80	147	34	-	298	1,980	1,372	4,092	10,577	15,743	36,064	55,927	-36%
Japan	-	-	-	-	-	-	-	-	-	-	-	-	-	-	-
Other Asia	-	-	-	-	-	-	-	-	-	-	-	-	-	-	-
Lihue (LIH)	-	-	-	-	-	-	-	-	-	104	1,485	1,725	3,314	10,229	-68%
Canada	-	-	-	-	-	-	-	-	-	104	1,485	1,725	3,314	10,229	-68%
Japan	-	-	-	-	-	-	-	-	-	-	-	-	-	-	-
Other Asia	-	-	-	-	-	-	-	-	-	-	-	-	-	-	-
Other Pacific	-	-	-	-	-	-	-	-	-	-	-	-	-	-	-
Grand Total	8,892	5,701	7,073	7,799	9,566	13,221	17,236	21,653	13,628	19,387	36,295	58,435	218,886	697,632	-69%

I-D. Monthly Enplaned (Outbound) International Air Passengers Per Airport Per Destination (excluding transits)

Airport/Destination	January	February	March	April	May	June	July	August	September	October	November	December	Grand Total	Prior Year	% Change
Daniel K. Inouye Int'l (HNL)	7,471	5,156	6,605	5,862	8,391	11,693	16,029	15,488	12,805	14,649	21,085	30,579	155,813	622,278	-75%
Australia	-	-	-	-	142	-	-	-	-	-	-	-	1,024	57,515	-98%
Canada	810	269	42	-	-	-	-	1,941	1,211	2,448	5,724	11,661	24,106	56,714	-57%
Europe	-	-	-	-	-	-	-	-	-	-	-	-	-	-	-
Japan	2,259	1,111	1,820	1,635	2,471	3,163	2,977	3,127	2,855	2,639	3,560	3,808	31,425	353,219	-91%
New Zealand	-	-	-	61	-	-	-	-	-	-	-	-	61	19,706	-100%
Other Asia	4,259	3,475	4,076	3,777	5,517	7,734	12,149	9,795	7,788	8,534	10,475	13,011	90,590	121,741	-26%
Other Pacific	143	301	423	389	403	654	903	625	951	1,028	1,326	1,075	8,221	13,383	-39%
Ellison Onizuka Kona Int'l (KOA)	85	38	-	-	-	-	-	-	-	18	1,505	2,636	4,282	40,021	-89%
Canada	85	38	-	-	-	-	-	-	-	18	1,505	2,636	4,282	23,675	-82%
Japan	-	-	-	-	-	-	-	-	-	-	-	-	-	16,346	-100%
Other Asia	-	-	-	-	-	-	-	-	-	-	-	-	-	-	-
Kahului (OGG)	2,532	490	167	212	69	-	17	1,769	1,254	2,763	8,564	12,147	29,984	61,519	-51%
Canada	2,532	490	167	212	69	-	17	1,769	1,254	2,763	8,564	12,147	29,984	61,519	-51%
Japan	-	-	-	-	-	-	-	-	-	-	-	-	-	-	-
Other Asia	-	-	-	-	-	-	-	-	-	-	-	-	-	-	-
Lihue (LIH)	-	-	-	-	-	-	-	-	-	18	1,232	1,298	2,548	11,416	-78%
Canada	-	-	-	-	-	-	-	-	-	18	1,232	1,298	2,548	11,416	-78%
Japan	-	-	-	-	-	-	-	-	-	-	-	-	-	-	-
Other Asia	-	-	-	-	-	-	-	-	-	-	-	-	-	-	-
Other Pacific	-	-	-	-	-	-	-	-	-	-	-	-	-	-	-
Grand Total	10,088	5,684	6,772	6,074	8,460	11,693	16,046	17,257	14,059	17,448	32,386	46,660	192,627	735,234	-74%

AIR TRAFFIC STATISTICS FOR CALENDAR YEAR 2021

II. Monthly Deplaned/Enplaned Air Cargo (Freight & Mail in U.S. Tons) Per Origin/Destination (OD) Class

OD/Deplaned-Enplaned	January	February	March	April	May	June	July	August	September	October	November	December	Grand Total	Prior Year	% Change
Domestic Overseas	29,011	26,790	31,451	31,932	32,723	33,055	34,675	35,143	34,047	35,535	35,881	41,146	401,388	326,059	23%
Deplaned	20,020	18,318	22,010	21,868	22,364	23,126	24,147	23,829	22,813	23,822	24,287	28,047	274,651	217,572	26%
Enplaned	8,992	8,472	9,440	10,064	10,359	9,929	10,528	11,315	11,234	11,713	11,594	13,099	126,738	108,486	17%
Interisland	22,104	19,073	22,310	21,878	21,573	22,174	20,230	19,841	18,639	21,451	23,571	27,062	259,908	256,834	1%
Deplaned	11,052	9,540	11,152	10,940	10,787	11,087	10,115	9,920	9,324	10,726	11,786	13,531	129,959	128,417	1%
Enplaned	11,052	9,533	11,159	10,940	10,787	11,087	10,115	9,920	9,315	10,726	11,786	13,531	129,949	128,417	1%
International	6,433	5,112	6,517	6,893	7,547	7,021	7,521	8,416	8,196	8,005	8,046	9,242	88,948	75,225	18%
Deplaned	2,707	2,046	2,633	3,053	3,300	3,084	3,511	4,048	4,349	4,011	4,180	4,681	41,603	32,428	28%
Enplaned	3,726	3,066	3,884	3,840	4,247	3,936	4,010	4,369	3,846	3,994	3,865	4,561	47,345	42,797	11%
Grand Total	57,549	50,975	60,276	60,704	61,843	62,249	62,426	63,400	60,881	64,991	67,498	77,450	750,245	658,118	14%

II-A. Monthly Deplaned (Inbound) Air Cargo (Freight & Mail in U.S. Tons) Per Origin Class Per Airport

Origin/Airport	January	February	March	April	May	June	July	August	September	October	November	December	Grand Total	Prior Year	% Change
Domestic Overseas	20,020	18,318	22,010	21,868	22,364	23,126	24,147	23,829	22,813	23,822	24,287	28,047	274,651	217,572	26%
Daniel K. Inouye Int'l (HNL)	19,168	17,417	20,859	20,731	21,263	21,901	22,875	22,498	21,198	21,719	22,057	25,430	257,115	207,077	24%
Elison Onizuka Kona Int'l (KOA)	47	58	74	87	70	91	95	115	98	80	95	116	1,004	958	5%
Hilo Int'l (ITO)	-	-	-	-	-	0	0	0	1	-	-	-	1	3	-62%
Kahului (OGG)	782	830	1,066	1,056	1,012	1,104	1,136	1,163	1,120	1,098	1,208	1,451	13,026	9,149	42%
Lihue (LIH)	22	12	11	14	19	30	41	53	398	926	928	1,051	3,505	385	810%
Interisland	11,052	9,540	11,152	10,940	10,787	11,087	10,115	9,920	9,324	10,726	11,786	13,531	129,959	128,417	1%
Daniel K. Inouye Int'l (HNL)	3,145	2,774	3,216	3,044	3,031	3,152	2,708	2,665	2,810	3,294	3,919	4,443	38,200	34,508	11%
Elison Onizuka Kona Int'l (KOA)	1,933	1,788	2,143	1,967	1,946	1,920	1,803	2,007	1,782	1,809	1,917	2,213	23,229	22,047	5%
Hana (HNM)	-	-	-	-	-	-	-	-	-	-	-	-	-	-	-
Hilo Int'l (ITO)	1,826	1,458	1,658	1,596	1,628	1,568	1,312	1,179	1,057	1,486	1,519	1,746	18,032	20,746	-13%
Kahului (OGG)	2,434	1,907	2,181	2,321	2,185	2,298	1,992	1,914	1,757	2,591	2,515	2,972	27,067	30,559	-11%
Kalaupapa (LUP)	5	4	7	5	7	6	6	6	6	6	6	4	65	87	-25%
Kapalua (JHM)	17	16	26	64	53	153	173	175	136	104	95	107	1,120	340	230%
Lanai (LNY)	119	127	150	161	155	167	169	183	170	164	167	175	1,908	1,356	41%
Lihue (LIH)	1,381	1,290	1,545	1,547	1,555	1,583	1,729	1,571	1,407	1,066	1,426	1,612	17,713	16,685	6%
Molokai (MKK)	192	174	226	236	227	242	222	220	200	206	222	258	2,623	2,090	25%
Waimea-Kohala (MUE)	-	-	-	-	-	-	-	-	-	-	-	-	-	-	-
International	2,707	2,046	2,633	3,053	3,300	3,084	3,511	4,048	4,349	4,011	4,180	4,681	41,603	32,428	28%
Daniel K. Inouye Int'l (HNL)	2,707	2,046	2,633	3,053	3,300	3,084	3,511	4,048	4,349	4,011	4,180	4,680	41,603	32,046	30%
Elison Onizuka Kona Int'l (KOA)	-	-	-	-	-	-	-	-	-	-	-	-	382	-	-100%
Kahului (OGG)	-	-	-	-	-	-	-	-	-	-	-	-	0	1	-32%
Grand Total	33,779	29,904	35,794	35,861	36,450	37,297	37,773	37,797	36,486	38,559	40,253	46,259	446,212	378,417	18%

II-B. Monthly Enplaned (Outbound) Air Cargo (Freight & Mail in U.S. Tons) Per Destination Class Per Airport

Destination/Airport	January	February	March	April	May	June	July	August	September	October	November	December	Grand Total	Prior Year	% Change
Domestic Overseas	8,992	8,472	9,440	10,064	10,359	9,929	10,528	11,315	11,234	11,713	11,594	13,099	126,738	108,486	17%
Daniel K. Inouye Int'l (HNL)	8,375	7,856	8,793	9,471	9,877	9,388	9,935	10,740	10,719	11,146	11,119	12,471	119,890	102,395	17%
Elison Onizuka Kona Int'l (KOA)	581	578	585	544	425	474	535	533	484	531	424	546	6,241	5,764	8%
Hilo Int'l (ITO)	-	-	-	-	-	0	0	0	0	0	0	0	0	0	314%
Kahului (OGG)	36	37	62	48	55	62	55	40	30	34	49	74	582	303	92%
Lihue (LIH)	-	1	0	1	2	3	2	2	2	1	2	7	22	24	-7%
Interisland	11,052	9,533	11,159	10,940	10,787	11,087	10,115	9,920	9,315	10,726	11,786	13,531	129,949	128,417	1%
Daniel K. Inouye Int'l (HNL)	6,923	5,992	7,076	7,051	6,990	7,121	6,895	6,790	6,152	7,135	7,584	8,847	84,557	85,887	-2%
Elison Onizuka Kona Int'l (KOA)	692	755	784	723	712	700	613	553	465	378	585	704	7,665	7,377	4%
Hana (HNM)	-	-	-	-	-	-	-	-	-	-	-	-	-	-	-
Hilo Int'l (ITO)	1,313	1,034	1,219	1,101	1,181	1,215	887	810	734	736	934	1,098	12,262	12,175	1%
Kahului (OGG)	1,388	1,094	1,221	1,255	1,139	1,268	1,017	1,042	1,007	1,097	1,118	1,191	13,837	14,549	-5%
Kalaupapa (LUP)	1	1	2	3	3	2	1	2	2	0	2	1	21	27	-24%
Kapalua (JHM)	10	9	10	22	21	23	24	23	24	24	26	30	245	117	110%
Lanai (LNY)	12	11	16	20	17	28	23	29	28	24	26	25	260	107	142%
Lihue (LIH)	681	613	801	723	685	694	616	633	655	1,301	1,478	1,595	10,684	7,901	35%
Molokai (MKK)	31	24	31	41	38	37	39	37	36	30	33	40	418	278	50%
Waimea-Kohala (MUE)	-	-	-	-	-	-	-	-	-	-	-	-	-	-	-
International	3,726	3,066	3,884	3,840	4,247	3,936	4,010	4,369	3,846	3,994	3,865	4,561	47,345	42,797	11%
Daniel K. Inouye Int'l (HNL)	3,717	3,066	3,884	3,840	4,247	3,936	4,010	4,368	3,846	3,994	3,851	4,561	47,321	42,598	11%
Elison Onizuka Kona Int'l (KOA)	-	-	-	-	-	-	-	-	-	-	-	0	0	195	-100%
Kahului (OGG)	9	-	-	-	-	-	-	1	-	-	-	14	0	24	5
Grand Total	23,769	21,072	24,483	24,843	25,393	24,952	24,653	25,604	24,395	26,433	27,245	31,191	304,032	279,701	9%

AIR TRAFFIC STATISTICS FOR CALENDAR YEAR 2021

II-C. Monthly Deplaned (Inbound) International Air Cargo (Freight & Mail in U.S. Tons) Per Airport Per Origin

Airport/Origin	January	February	March	April	May	June	July	August	September	October	November	December	Grand Total	Prior Year	% Change
Daniel K. Inouye Int'l (HNL)	2,707	2,046	2,633	3,053	3,300	3,084	3,511	4,048	4,349	4,011	4,180	4,680	41,603	32,046	30%
Australia	-	-	-	-	-	-	-	21	9	2	-	104	136	749	-82%
Canada	-	-	-	-	-	-	-	-	-	-	21	3	25	136	-82%
Europe	-	-	-	-	-	-	-	-	-	-	-	-	-	0	-
Japan	2,284	1,629	640	996	1,141	877	1,312	1,754	2,121	1,918	2,064	1,946	18,681	26,861	-30%
New Zealand	-	-	-	-	-	-	-	-	-	-	-	-	-	328	-100%
Other Asia	343	288	1,903	1,916	1,932	2,012	2,079	2,004	1,927	1,979	1,999	2,547	20,929	3,102	575%
Other Pacific	81	129	90	141	227	195	120	268	292	112	96	80	1,832	871	110%
Elison Onizuka Kona Int'l (KOA)	-	-	-	-	-	-	-	-	-	-	-	-	-	382	-100%
Canada	-	-	-	-	-	-	-	-	-	-	-	-	-	0	-100%
Japan	-	-	-	-	-	-	-	-	-	-	-	-	-	382	-100%
Other Asia	-	-	-	-	-	-	-	-	-	-	-	-	-	-	-
Kahului (OGG)	-	-	-	-	-	-	-	-	-	-	-	-	-	1	-32%
Canada	-	-	-	-	-	-	-	-	-	-	-	-	-	1	-32%
Japan	-	-	-	-	-	-	-	-	-	-	-	-	-	-	-
Other Asia	-	-	-	-	-	-	-	-	-	-	-	-	-	-	-
Lihue (LIH)	-	-	-	-	-	-	-	-	-	-	-	-	-	-	-
Canada	-	-	-	-	-	-	-	-	-	-	-	-	-	-	-
Japan	-	-	-	-	-	-	-	-	-	-	-	-	-	-	-
Other Asia	-	-	-	-	-	-	-	-	-	-	-	-	-	-	-
Other Pacific	-	-	-	-	-	-	-	-	-	-	-	-	-	-	-
Grand Total	2,707	2,046	2,633	3,053	3,300	3,084	3,511	4,048	4,349	4,011	4,180	4,681	41,603	32,428	28%

II-D. Monthly Enplaned (Outbound) International Air Cargo (Freight & Mail in U.S. Tons) Per Airport Per Destination

Airport/Destination	January	February	March	April	May	June	July	August	September	October	November	December	Grand Total	Prior Year	% Change
Daniel K. Inouye Int'l (HNL)	3,717	3,066	3,884	3,840	4,247	3,936	4,010	4,368	3,846	3,994	3,851	4,561	47,321	42,598	11%
Australia	2,159	1,713	2,356	2,256	2,500	2,341	2,373	2,571	2,325	2,513	2,288	2,620	28,014	25,736	9%
Canada	38	-	-	-	-	-	-	25	4	34	21	100	222	173	28%
Europe	-	-	-	-	-	-	-	-	-	-	-	-	-	-	-
Japan	116	129	109	123	102	172	181	119	135	115	221	220	1,742	2,166	-20%
New Zealand	304	246	265	253	315	265	355	311	271	61	268	75	2,989	3,356	-11%
Other Asia	497	390	475	646	838	629	563	803	624	521	522	671	7,178	5,943	21%
Other Pacific	603	589	679	562	493	528	539	539	467	750	532	874	7,176	5,224	37%
Elison Onizuka Kona Int'l (KOA)	-	-	-	-	-	-	-	-	-	-	-	-	-	0	-100%
Canada	-	-	-	-	-	-	-	-	-	-	-	-	-	1	-38%
Japan	-	-	-	-	-	-	-	-	-	-	-	-	-	194	-100%
Other Asia	-	-	-	-	-	-	-	-	-	-	-	-	-	-	-
Kahului (OGG)	9	-	-	-	-	-	-	1	-	-	14	-	24	5	408%
Canada	9	-	-	-	-	-	-	1	-	-	14	-	24	5	408%
Japan	-	-	-	-	-	-	-	-	-	-	-	-	-	-	-
Other Asia	-	-	-	-	-	-	-	-	-	-	-	-	-	-	-
Lihue (LIH)	-	-	-	-	-	-	-	-	-	-	-	-	-	-	-
Canada	-	-	-	-	-	-	-	-	-	-	-	-	-	-	-
Japan	-	-	-	-	-	-	-	-	-	-	-	-	-	-	-
Other Asia	-	-	-	-	-	-	-	-	-	-	-	-	-	-	-
Other Pacific	-	-	-	-	-	-	-	-	-	-	-	-	-	-	-
Grand Total	3,726	3,066	3,884	3,840	4,247	3,936	4,010	4,369	3,846	3,994	3,865	4,561	47,345	42,797	11%

AIR TRAFFIC STATISTICS FOR CALENDAR YEAR 2021

III. Monthly Itinerant Aircraft Operations Per Airport

Airport/Aircraft Class	January	February	March	April	May	June	July	August	September	October	November	December	Grand Total	Prior Year	% Change
Daniel K. Inoué Int'l (HNL)	16,134	15,807	19,405	21,126	22,797	25,816	27,106	27,327	24,843	24,761	24,488	25,161	274,771	186,367	47%
Air Carrier	7,734	6,752	8,486	9,261	10,028	11,630	12,109	12,407	11,479	11,198	11,356	12,633	125,073	96,022	30%
Air Taxi	4,442	5,102	6,577	7,117	7,873	8,623	9,570	9,315	8,100	7,972	7,475	7,717	89,883	44,807	101%
General Aviation	2,941	2,944	3,301	3,705	3,872	4,173	4,309	4,118	4,118	4,338	4,535	3,785	46,039	33,566	37%
Military	1,017	1,109	1,041	1,043	1,024	1,390	1,118	1,487	1,146	1,253	1,122	1,026	13,776	11,972	15%
Ellison Onizuka Kona Int'l (KOA)	3,795	3,707	4,512	5,001	5,025	5,458	5,695	5,830	5,070	5,255	5,541	5,909	60,798	42,273	44%
Air Carrier	1,752	1,604	1,967	2,169	2,385	2,908	3,071	3,164	2,882	2,883	2,819	2,970	30,574	17,408	76%
Air Taxi	705	691	906	962	965	1,038	1,186	1,109	934	1,062	1,133	1,240	11,931	8,325	43%
General Aviation	1,057	1,089	1,352	1,553	1,407	1,338	1,234	1,371	999	1,162	1,421	1,552	15,535	13,540	15%
Military	281	323	287	317	268	174	204	186	255	148	168	147	2,759	3,000	-9%
Hilo Int'l (ITO)	1,666	1,505	1,912	2,361	2,731	3,023	2,938	2,528	2,796	2,809	2,809	2,828	30,002	20,900	44%
Air Carrier	919	792	943	1,110	1,138	1,250	1,188	1,218	1,149	1,087	1,078	1,251	13,123	11,299	16%
Air Taxi	207	231	305	325	553	514	884	1,276	1,052	1,357	1,412	1,261	9,377	5,298	117%
General Aviation	461	390	569	809	917	1,083	750	213	152	256	220	223	6,043	2,849	39%
Military	79	92	95	117	123	176	116	198	175	96	99	93	1,459	1,454	0%
Kahului (OGG)	6,620	6,455	8,581	9,827	10,785	12,443	13,591	12,991	11,149	11,003	11,236	12,092	126,773	62,765	102%
Air Carrier	3,146	2,699	3,531	3,774	4,136	5,118	5,584	5,596	5,040	4,943	5,042	5,472	54,081	26,802	102%
Air Taxi	2,299	2,589	3,806	4,639	5,189	5,936	6,535	6,001	4,899	4,854	4,841	5,250	56,838	25,103	126%
General Aviation	1,066	994	1,128	1,296	1,350	1,277	1,382	1,278	1,074	1,106	1,263	1,233	14,447	9,611	50%
Military	209	173	116	118	110	112	90	116	136	100	90	137	1,407	1,249	13%
Kalaheo (JRF)	2,199	2,168	2,155	2,682	2,766	2,625	2,609	2,557	2,503	2,634	2,529	2,494	29,921	22,690	32%
Air Carrier	-	-	-	-	-	-	-	-	-	-	-	-	-	-	-
Air Taxi	-	-	-	-	-	-	-	-	-	-	-	-	-	-	13
General Aviation	1,648	1,629	1,727	2,074	2,051	2,097	2,151	1,931	1,976	1,978	1,963	1,953	23,178	17,033	36%
Military	551	539	428	608	715	528	458	626	527	656	566	541	6,743	5,644	19%
Kapalua (JHM)	170	170	193	194	279	302	319	307	208	213	178	198	2,731	3,420	-20%
Air Carrier	-	-	-	-	-	-	-	-	-	-	-	-	-	-	484
Air Taxi	170	170	193	194	279	302	319	305	208	210	178	193	2,721	2,878	-100%
General Aviation	-	-	-	-	-	-	-	2	-	3	-	5	10	58	-83%
Military	-	-	-	-	-	-	-	-	-	-	-	-	-	-	-
Lihue (LIH)	1,592	1,874	2,457	4,810	6,283	7,981	8,556	8,730	8,617	7,723	7,894	7,663	73,980	36,519	108%
Air Carrier	635	583	743	1,252	1,583	2,465	2,605	2,801	2,583	2,567	2,441	2,560	22,798	14,015	63%
Air Taxi	563	1,292	1,292	2,850	4,189	4,947	5,471	5,465	5,598	4,774	5,020	4,719	45,812	16,328	181%
General Aviation	264	232	284	374	420	445	361	386	304	310	350	298	4,048	3,553	14%
Military	110	108	138	119	119	124	99	132	132	72	83	86	1,322	1,623	-19%
Molokai (MKK)	1,526	1,568	2,001	1,969	2,188	2,276	2,345	2,367	2,145	2,338	2,469	2,585	25,777	25,649	0%
Air Carrier	-	-	-	-	-	-	-	-	-	-	-	-	-	-	3
Air Taxi	1,198	1,273	1,673	1,551	1,851	1,895	2,063	2,007	1,825	2,032	2,129	2,324	21,821	21,413	2%
General Aviation	300	254	311	377	289	362	267	343	280	281	310	245	3,619	3,651	-1%
Military	28	41	17	41	48	19	15	17	40	25	30	16	337	582	-42%
Grand Total	33,702	33,254	41,216	47,770	52,854	59,924	63,159	63,014	57,063	56,723	57,144	58,930	624,753	399,583	56%

III-A. Monthly Local Aircraft Operations Per Airport

Airport/Aircraft Class	January	February	March	April	May	June	July	August	September	October	November	December	Grand Total	Prior Year	% Change
Daniel K. Inoué Int'l (HNL)	-	-	1	1	-	2	5	4	1	-	-	-	14	264	-95%
General Aviation	-	-	-	-	-	2	5	2	-	-	-	-	10	252	-96%
Military	-	-	-	1	-	-	-	2	1	-	-	-	4	12	-67%
Dillingham Field (HDH)	2,256	1,782	2,014	3,440	4,074	2,646	3,000	2,497	2,226	2,756	2,626	2,239	31,556	18,504	71%
Civilian Power	2,040	1,432	1,578	2,396	3,368	2,176	2,302	1,785	1,334	1,898	1,874	1,687	23,892	12,566	90%
Glider	174	156	298	370	242	288	248	202	290	256	290	238	3,252	2,426	34%
Military	42	194	138	472	444	182	450	510	602	602	462	314	4,412	3,512	26%
Ellison Onizuka Kona Int'l (KOA)	3,272	3,317	3,576	4,000	3,073	2,661	2,795	2,389	2,768	2,521	2,764	2,820	35,956	51,565	-30%
General Aviation	3,020	2,959	3,249	3,710	2,789	2,435	2,457	2,098	2,451	2,261	2,528	2,628	32,585	48,287	-33%
Military	252	358	327	290	284	226	338	291	317	260	236	192	3,371	3,278	3%
Hilo Int'l (ITO)	401	430	264	490	499	697	549	834	725	611	518	506	6,524	4,991	31%
General Aviation	274	338	184	381	363	488	417	581	457	521	476	350	4,830	3,384	43%
Military	127	92	80	109	136	209	132	253	268	90	42	156	1,694	1,607	5%
Kahului (OGG)	1,207	1,049	1,348	801	1,320	963	756	715	956	914	837	1,045	11,911	13,842	-14%
General Aviation	1,193	1,027	1,319	799	1,290	939	756	697	948	908	829	1,045	11,750	11,990	-2%
Military	14	22	29	2	30	24	16	18	8	6	8	161	1,852	91%	
Kalaheo (JRF)	13,227	13,085	12,676	13,465	13,097	13,359	12,267	12,563	13,221	12,086	12,397	10,944	152,385	155,803	-2%
General Aviation	12,305	12,259	11,946	11,960	11,329	12,225	10,855	10,946	11,217	10,570	10,701	9,609	135,922	141,449	-4%
Military	922	826	730	1,503	1,768	1,134	1,412	1,617	2,004	1,516	1,696	1,335	16,463	14,354	15%
Kapalua (JHM)	2	-	-	-	-	-	-	-	-	-	-	-	2	4	-50%
General Aviation	-	-	-	-	-	-	-	-	-	-	-	-	-	-	-
Military	2	-	-	-	-	-	-	-	-	-	-	-	-	2	4
Lihue (LIH)	502	505	371	825	958	934	653	887	1,200	1,030	805	585	9,255	6,491	43%
General Aviation	450	442	337	745	894	880	624	857	1,135	994	789	575	8,722	5,844	49%
Military	52	63	34	80	64	54	29	30	65	36	16	10	533	647	-18%
Molokai (MKK)	97	101	75	96	116	34	62	64	46	47	103	49	890	1,768	-50%
General Aviation	76	71	71	78	76	33	44	58	44	25	103	40	719	1,230	-42%
Military	21	30	4	18	40	1	18	6	2	22	9	9	171	538	-68%

AIR TRAFFIC STATISTICS FOR CALENDAR YEAR 2021

III-B. Monthly Landings (Arrivals) Per Airport Per Service Type As Reported by Aircraft Operators

Airport/Service Type	January	February	March	April	May	June	July	August	September	October	November	December	Grand Total	Prior Year	% Change
Daniel K. Inoué Int'l (HNL)	5,458	5,195	6,584	7,281	8,326	9,253	10,126	10,173	9,081	8,947	8,711	9,685	98,820	65,597	50.65%
Passenger	3,114	2,868	3,690	4,074	4,544	5,237	5,881	5,927	5,361	5,298	5,232	5,718	56,944	38,231	48.95%
Passenger-Charter	56	61	122	157	193	179	227	233	197	175	129	170	1,899	1,055	80.00%
Passenger-Government Charter	12	11	13	13	12	18	19	36	13	4	4	17	182	157	15.92%
Passenger-Tour Operator	390	581	708	979	1,560	1,740	1,861	1,750	1,288	1,216	1,240	1,413	14,716	5,579	311.18%
Cargo	1,203	1,127	1,354	1,250	1,219	1,259	1,387	1,404	1,392	1,422	1,486	1,486	15,881	14,904	6.56%
Cargo-Government Charter	8	10	9	17	19	14	11	24	18	25	10	12	177	107	65.42%
Ferry Flight	556	438	519	626	674	657	570	647	712	720	460	658	7,237	6,380	13.43%
Fuel/Tech Stop	1	1	-	1	-	1	-	-	-	-	-	5	18	2	800.00%
Fixed Base Operator	128	98	169	164	105	149	170	152	100	127	198	206	1,766	1,162	49.41%
Dillingham Field (HDH)	478	321	433	576	755	621	622	500	451	404	442	357	5,955	2,857	108.51%
Passenger-Charter	478	319	433	576	753	621	622	500	451	404	442	357	5,955	2,856	108.51%
Passenger-Tour Operator	-	-	-	-	-	-	-	-	-	-	-	-	-	-	-
Cargo	1	2	-	-	2	-	-	-	-	-	-	-	3	1	200.00%
Ferry Flight	-	-	-	-	-	-	-	-	-	-	-	-	-	-	-
Ellison Onizuka Kona Int'l (KOA)	1,537	1,510	1,840	1,880	2,009	2,391	2,516	2,472	2,095	2,185	2,235	2,449	25,119	14,462	73.69%
Passenger	964	911	1,126	1,224	1,372	1,610	1,721	1,713	1,567	1,575	1,564	1,666	17,013	9,819	73.27%
Passenger-Charter	15	10	52	77	81	129	171	145	82	91	90	113	1,056	93	1035.48%
Passenger-Tour Operator	91	157	167	114	143	179	182	168	126	151	152	172	1,802	577	212.31%
Cargo	181	179	213	202	202	207	187	195	183	205	187	196	2,337	2,184	7.01%
Cargo-Government Charter	-	-	-	-	-	-	-	-	-	-	-	-	-	-	-
Ferry Flight	50	82	43	39	44	85	68	40	44	55	37	41	628	623	0.80%
Fixed Base Operator	236	171	239	224	167	181	187	211	93	108	205	261	2,283	1,166	95.80%
Hana (HNM)	57	60	71	85	81	93	90	79	76	82	75	86	935	601	55.57%
Passenger	50	51	59	57	63	66	63	59	58	66	60	58	710	442	60.63%
Passenger-Charter	-	-	-	-	-	-	-	-	-	-	-	-	-	-	-
Passenger-Tour Operator	7	9	12	18	18	27	27	20	18	16	15	28	215	86	150.00%
Ferry Flight	-	-	-	10	-	-	-	-	-	-	-	-	10	73	-86.30%
Hilo Int'l (ITO)	659	663	813	931	1,065	1,156	1,165	1,169	1,063	1,110	1,153	1,225	12,172	8,135	49.63%
Passenger	305	273	335	427	524	579	586	604	568	540	536	593	5,870	4,111	42.79%
Passenger-Charter	2	1	1	1	1	1	2	1	-	2	1	4	16	6	166.67%
Passenger-Tour Operator	129	140	218	259	295	358	329	310	202	319	339	339	3,237	1,189	172.25%
Cargo	158	153	184	173	176	180	217	197	200	220	236	250	2,344	1,974	18.74%
Ferry Flight	62	95	71	69	68	35	28	52	90	27	33	30	660	818	-19.32%
Fixed Base Operator	3	1	4	2	4	3	5	3	2	4	8	9	45	37	21.62%
Kahului (OGG)	2,932	2,753	3,863	4,502	4,859	5,686	6,432	6,202	5,234	5,251	5,204	5,625	58,543	27,107	115.97%
Passenger	2,059	1,882	2,409	2,628	2,944	3,459	3,833	3,739	3,331	3,408	3,367	3,599	36,658	18,604	97.04%
Passenger-Charter	3	6	3	4	4	4	4	4	3	2	2	3	2	3	-5.56%
Passenger-Tour Operator	361	441	920	1,326	1,420	1,741	2,020	1,854	1,381	1,277	1,296	1,427	15,464	4,031	283.63%
Cargo	247	216	253	253	258	262	321	352	392	415	324	318	3,611	2,575	40.23%
Ferry Flight	76	68	94	96	80	101	100	42	29	36	58	860	1,002	-14.17%	
Fixed Base Operator	186	142	184	194	153	141	155	153	86	120	179	223	1,916	859	123.05%
Kalaheo (JRF)	-	30	24	34	29	45	58	71	52	54	56	90	543	43	1162.79%
Passenger-Charter	-	-	-	-	-	-	-	-	-	-	-	-	-	-	-
Passenger-Tour Operator	-	30	24	27	15	30	50	53	35	38	39	65	406	33	1130.30%
Cargo	-	-	-	7	10	9	8	8	14	15	16	22	109	10	990.00%
Ferry Flight	-	-	-	-	-	-	-	-	-	-	-	-	-	-	-
Kalaupapa (LUP)	78	80	86	77	146	145	130	132	159	150	150	151	1,484	1,251	18.63%
Passenger	36	42	54	55	125	122	108	110	138	128	130	128	1,176	450	161.33%
Passenger-Charter	-	-	-	-	-	-	-	-	-	-	-	-	-	-	-
Passenger-Tour Operator	-	-	-	-	-	-	-	-	-	-	-	-	-	141	-100.00%
Cargo	42	38	32	22	21	23	22	22	21	22	20	23	308	542	-43.17%
Ferry Flight	-	-	-	-	-	-	-	-	-	-	-	-	-	118	-100.00%
Kapalua (JHM)	86	84	103	105	147	193	209	209	175	176	160	160	1,807	1,689	6.99%
Passenger	50	52	57	61	106	102	114	111	96	104	98	89	1,040	1,072	-2.99%
Passenger-Charter	-	-	-	-	-	-	-	-	2	2	1	1	9	3	200.00%
Passenger-Tour Operator	-	1	-	-	-	-	-	-	-	-	-	-	1	18	-94.44%
Cargo	28	30	42	43	40	89	92	94	75	65	57	67	722	522	38.31%
Ferry Flight	8	1	4	1	1	1	3	2	2	6	3	3	35	74	-52.70%
Lanai (LNY)	631	728	899	951	943	977	1,076	1,061	904	935	930	970	11,005	5,044	118.18%
Passenger	199	226	275	288	307	337	339	332	328	364	349	324	3,668	1,952	87.91%
Passenger-Charter	9	9	10	8	12	9	8	12	8	8	10	9	112	563	-80.11%
Passenger-Tour Operator	194	275	352	392	413	392	476	446	358	345	359	358	4,360	271	1508.86%
Cargo	130	136	152	153	148	150	159	159	157	150	148	176	1,818	1,486	22.34%
Ferry Flight	68	62	78	73	44	60	72	80	44	56	40	58	735	694	5.91%
Fixed Base Operator	51	20	32	37	19	29	22	32	9	12	24	45	312	78	300.00%
Lihue (LIH)	626	701	957	1,946	2,841	3,699	4,057	4,202	3,971	3,897	4,002	3,856	34,755	15,032	131.21%
Passenger	284	265	355	627	766	1,171	1,281	1,360	1,270	1,241	1,240	1,310	11,190	6,605	69.42%
Passenger-Charter	11	44	73	243	459	426	317	416	440	324	323	236	3,312	755	338.68%
Passenger-Tour Operator	27	121	196	750	1,215	1,756	2,131	2,095	1,909	1,923	2,066	1,906	16,095	4,106	291.99%
Cargo	200	172	187	170	171	183	210	216	255	257	226	265	2,512	2,360	6.44%
Ferry Flight	66	77	61	96	125	107	69	81	68	108	92	61	1,031	859	20.02%
Fixed Base Operator	22	60	65	80	85	56	49	34	29	44	55	78	347	347	0.00%
Molokai (MKK)	741	786	970	953	1,070	1,143	1,197	1,131	1,040	1,141	1,107	1,244	12,523	10,066	24.41%
Passenger	497	553	695	698	808	916	983	915	831	927	896	987	9,706	5,522	75.77%
Passenger-Charter	1	-	-	-	-	1	1	1	-	-	-	4	9	9	0.00%
Passenger-Tour Operator	1	-	-	-	-	-	-	-	-	-	-	-	-	-	-
Cargo	182	174	218	202	192	202	187	188	183						

AIR TRAFFIC STATISTICS FOR CALENDAR YEAR 2021

III-C. Monthly Landings (Arrivals) of Wide Body (WB) Aircraft at Five (5) Major Airports

Airports	January	February	March	April	May	June	July	August	September	October	November	December	Grand Total	Prior Year	% Change
Daniel K. Inouye Int'l (HNL)	961	843	1,030	1,041	1,179	1,438	1,587	1,571	1,433	1,426	1,429	1,680	15,618	10,587	48%
Elison Onizuka Kona Int'l (KOA)	35	51	57	54	54	110	115	116	116	128	56	62	954	530	80%
Hilo Int'l (ITO)	217	210	306	291	351	329	296	283	254	275	249	295	3,356	1,268	165%
Lihue (LIH)	21	20	22	22	20	78	83	81	112	84	58	57	658	265	148%
Grand Total	1,234	1,124	1,415	1,408	1,605	1,955	2,082	2,051	1,915	1,913	1,792	2,094	20,588	12,655	63%

III-D. Monthly Landings (Arrivals) Per Airport Per FAA's Airplane Design Group

Airports/Design Group	January	February	March	April	May	June	July	August	September	October	November	December	Grand Total	Prior Year	% Change
Daniel K. Inouye Int'l (HNL)	5,458	5,195	6,584	7,281	8,326	9,253	10,126	10,173	9,081	8,947	8,711	9,685	98,820	65,597	51%
VI	25	15	24	25	57	13	23	32	22	28	45	30	339	254	33%
V	732	635	796	830	965	1,220	1,313	1,289	1,149	1,205	1,193	1,480	12,807	9,957	29%
IV	633	562	623	628	650	643	643	657	612	584	642	698	7,575	5,558	36%
III	2,464	2,072	2,753	3,195	3,346	3,947	4,122	4,237	3,938	3,789	3,673	4,075	41,611	32,125	30%
II	1,345	1,532	1,886	1,852	1,919	1,874	2,410	2,218	2,287	2,136	2,177	2,455	24,055	14,568	65%
I	259	378	498	751	1,389	1,554	1,612	1,536	1,142	1,053	1,022	1,224	12,418	3,125	297%
Unspecified	478	321	433	576	755	621	622	500	451	405	442	357	5,961	2,857	109%
Dillingham Field (HDH)	472	308	411	560	724	602	597	477	428	381	420	335	5,715	2,745	108%
I	6	13	22	16	31	19	25	23	23	24	22	22	246	112	120%
Elison Onizuka Kona Int'l (KOA)	1,537	1,510	1,840	1,880	2,009	2,391	2,516	2,472	2,095	2,185	2,235	2,449	25,119	14,462	74%
VI	51	4	1	1	6	52	64	73	62	70	48	76	560	170	229%
V	37	28	35	9	6	5	64	73	62	70	48	76	560	170	229%
IV	89	172	145	142	141	197	191	175	175	218	199	166	1,973	914	116%
III	936	841	1,015	1,124	1,253	1,374	1,449	1,478	1,330	1,315	1,336	1,471	14,922	9,282	61%
II	352	330	420	416	384	445	465	418	320	343	415	450	4,758	3,420	39%
I	123	199	224	189	225	302	340	312	208	239	237	286	2,884	671	330%
Unspecified	1	1	1	1	1	21	21	21	21	21	21	21	22	4	450%
Hana (HNM)	57	60	71	85	81	93	90	79	76	82	75	86	935	601	56%
II	50	51	59	57	63	66	63	59	58	66	60	58	710	515	38%
I	7	9	12	28	18	27	27	20	18	16	15	28	225	86	162%
Hilo Int'l (ITO)	659	663	813	931	1,065	1,156	1,165	1,169	1,063	1,110	1,153	1,225	12,172	8,135	50%
V	-	-	-	-	1	1	1	-	-	-	-	-	2	3	-33%
IV	-	-	2	-	-	-	-	-	-	-	1	-	3	6	-50%
III	449	405	504	551	573	633	580	599	570	533	536	603	6,536	5,969	9%
II	58	54	59	94	168	133	231	233	259	230	244	253	2,016	457	341%
I	152	204	248	286	323	390	353	337	234	347	371	369	3,614	1,698	113%
Unspecified	-	-	-	-	-	-	-	-	-	-	1	-	1	2	-50%
Kahului (OGG)	2,932	2,753	3,863	4,502	4,859	5,686	6,432	6,202	5,234	5,251	5,204	5,625	58,543	27,107	116%
V	126	130	188	192	207	241	279	228	166	213	349	381	2,700	963	180%
IV	244	193	255	303	309	310	287	291	259	318	310	269	3,100	1,073	185%
III	1,408	1,177	1,537	1,728	1,781	2,319	2,516	2,543	2,294	2,253	2,215	2,406	24,177	13,200	82%
II	781	790	938	991	1,130	1,042	1,272	1,255	1,109	1,239	1,124	1,177	12,848	8,555	50%
I	373	457	945	1,348	1,432	1,774	2,076	1,879	1,384	1,287	1,320	1,443	15,718	3,226	387%
Kalaheo (JRF)	-	30	24	34	29	45	58	71	52	54	56	90	543	43	1163%
II	-	-	-	-	-	-	-	-	-	-	-	-	-	1	-100%
I	-	30	24	34	29	41	58	71	50	54	51	82	524	42	1148%
Unspecified	-	-	-	-	4	4	-	2	-	5	8	-	19	-	-
Kalaupapa (LUP)	78	80	86	77	146	145	130	132	159	150	150	151	1,484	1,251	19%
II	78	80	86	77	146	145	130	132	159	150	150	151	1,484	1,251	19%
I	-	-	-	-	-	-	-	-	-	-	-	-	-	-	-
Kapalua (JHM)	86	84	103	105	147	193	209	209	175	176	160	160	1,807	1,689	7%
III	-	-	-	-	-	-	-	-	-	-	-	-	-	248	-100%
II	86	83	103	105	147	191	209	205	173	173	158	158	1,791	1,416	26%
I	-	1	-	-	2	2	4	2	2	3	2	2	16	25	-36%
Lanai (LNY)	631	728	899	951	943	977	1,076	1,061	904	935	930	970	11,005	5,044	118%
III	30	1	6	10	1	2	4	3	2	4	4	9	76	1,122	-93%
II	600	726	893	926	931	970	1,059	1,045	901	931	923	957	10,862	3,900	179%
I	1	1	-	15	11	5	13	13	1	-	3	4	67	22	205%
Unspecified	-	-	-	-	-	-	-	-	-	-	-	-	-	-	-
Lihue (LIH)	626	701	957	1,946	2,841	3,699	4,057	4,202	3,971	3,897	4,002	3,856	34,755	15,032	131%
V	-	-	-	-	-	3	-	3	3	-	1	7	1	1	600%
IV	50	64	69	93	104	161	172	173	180	125	143	148	1,482	894	66%
III	365	313	421	684	831	1,172	1,246	1,313	1,242	1,267	1,253	1,353	11,480	7,309	57%
II	168	141	172	148	169	148	190	188	194	214	187	190	2,109	1,845	14%
I	43	183	294	1,021	1,737	2,215	2,449	2,528	2,352	2,291	2,419	2,164	19,696	4,983	295%
Unspecified	1	1	1	1	1	1	1	1	1	1	1	1	1	1	-
Molokai (MKK)	741	786	970	953	1,070	1,143	1,197	1,131	1,040	1,141	1,107	1,244	12,523	10,066	24%
III	28	-	-	-	-	-	-	-	-	-	-	-	28	1,047	-97%
II	711	786	970	953	1,069	1,142	1,195	1,128	1,039	1,140	1,107	1,237	12,477	9,003	39%
I	2	-	-	-	1	1	2	3	1	1	-	7	18	16	13%
Port Allen (PAK)	6	2	5	6	12	14	16	16	3	7	9	5	101	221	-54%
II	-	-	-	-	-	-	-	-	-	-	-	-	-	27	-100%
I	6	2	5	6	12	14	16	16	3	7	9	5	101	194	-48%
Unspecified	-	-	-	-	-	-	-	-	-	-	-	-	-	1	-100%
Upolu (UPP)	-	-	-	-	-	-	-	-	-	-	-	-	-	-	-100%
Waimea-Kohala (MUE)	69	70	72	89	73	77	100	104	85	81	75	76	971	699	39%
II	57	55	60	62	62	59	62	60	60	66	63	64	730	617	18%
I	12	15	12	27	11	18	38	44	25	15	12	12	241	82	194%
Grand Total	13,358	12,983	16,720	19,416	22,356	25									