



STORMWATER Activity Book



**Department of Transportation - Airports
Stormwater Program**

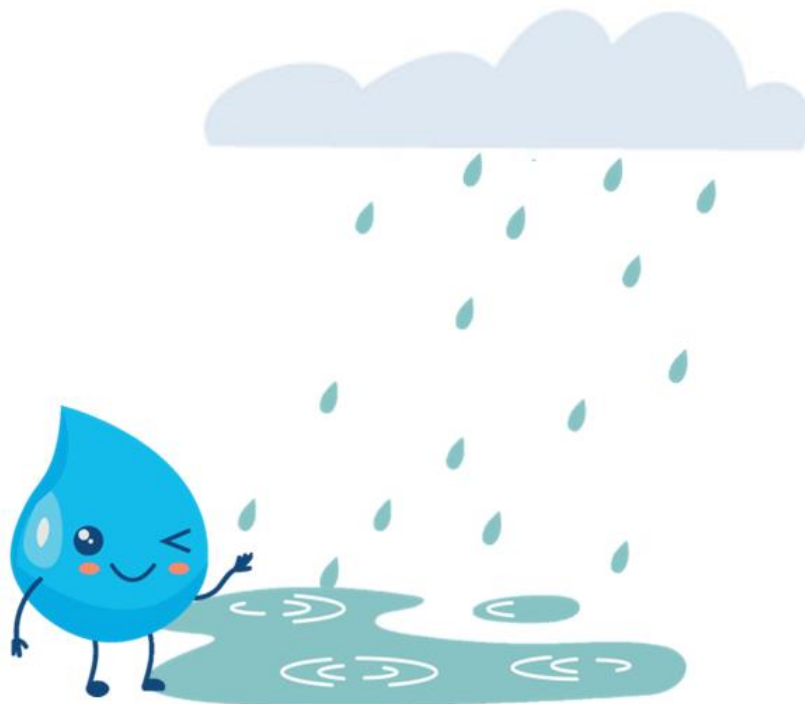


Stormwater



Did you know...

...when rain and other water flows across grass or pavement it is called stormwater? This water flows over land surface, across asphalt and runs through pipes and drains and will eventually end up in a stream, in a river, in the ocean or in any other body of water. When you leave trash on the ground instead of throwing it into the garbage, it is picked up by the water and carried into our streams, rivers, and the ocean.



Be Smart and Do Your Part!

Here's what you can do to prevent pollution while performing some common household activities.

Don't Litter! Don't leave trash on the ground. Put your trash where it belongs.



Cover your trash can! Trash left outside and uncovered can be blown onto the street, then carried through storm drains to the ocean.

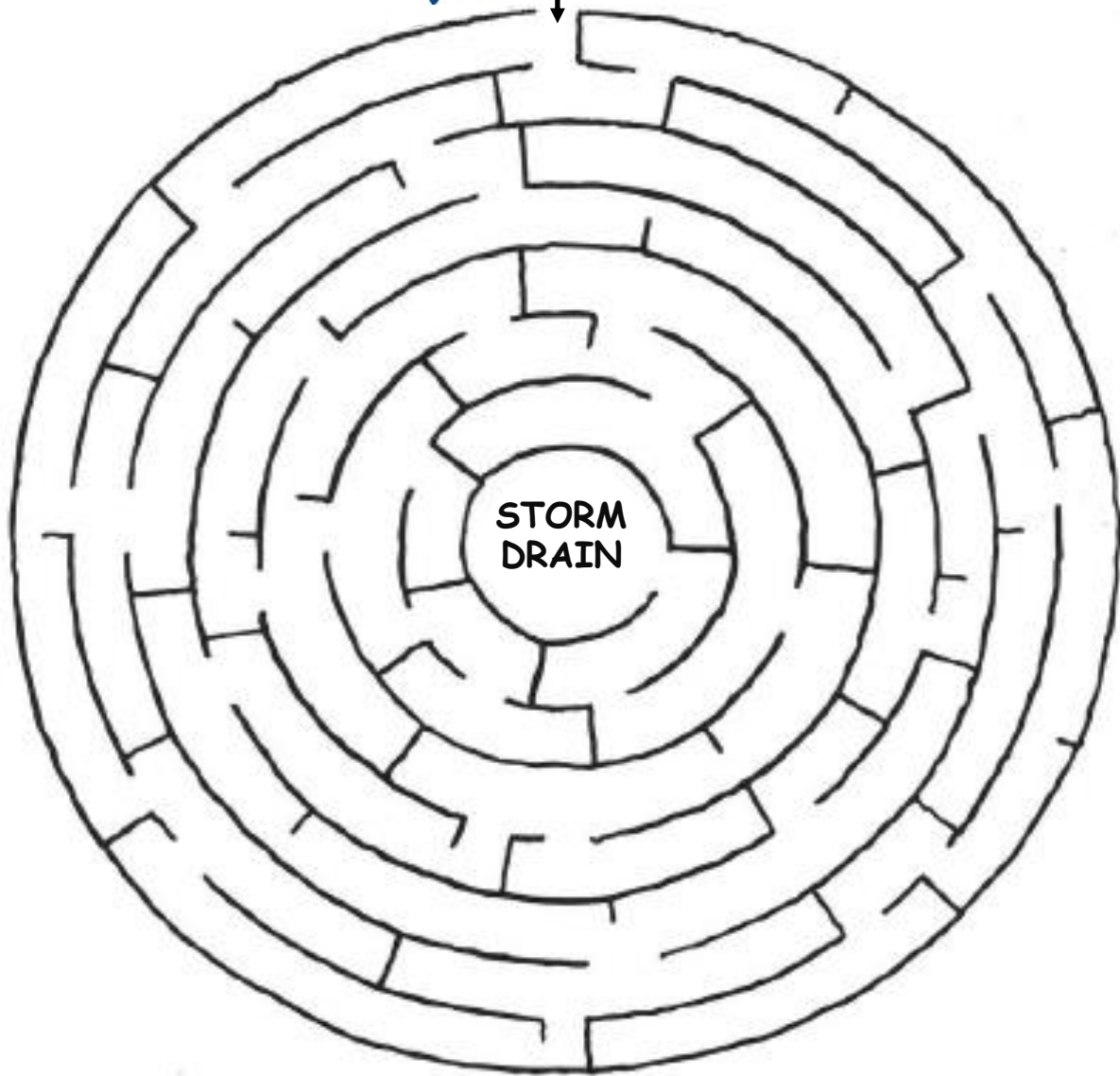
Wash your car on grass or use a car wash! Washing your car in your driveway or street will result in soapy water running into streams and the ocean.



Pick up your dog's poop! Bacteria from pet waste can end up on lawns, the beach, and eventually in the ocean water, which make people sick.



Help the rain find its way to the drain!



Our Lawns Pollute!

Fertilizers and herbicides may help our lawns look beautiful but they can be problematic for our streams and oceans. When it rains, the fertilizers and herbicides wash off our lawns and go down into storm drains. From there, they flow to our ocean, where they can cause excess algae growth which damages the reefs and suffocates fish.

Fill in the blanks with the letters matching the numbers below.

1=A	6=F	11=K	16=P	21=U
2=B	7=G	12=L	17=Q	22=V
3=C	8=H	13=M	18=R	23=W
4=D	9=I	14=N	19=S	24=X
5=E	10=J	15=O	20=T	25=Y
				26=Z

4	15

14	15	20

1	16	16	12	25

6	5	18	20	9	12	9	26	5	18

2	5	6	15	18	5

18	1	9	14

15	18

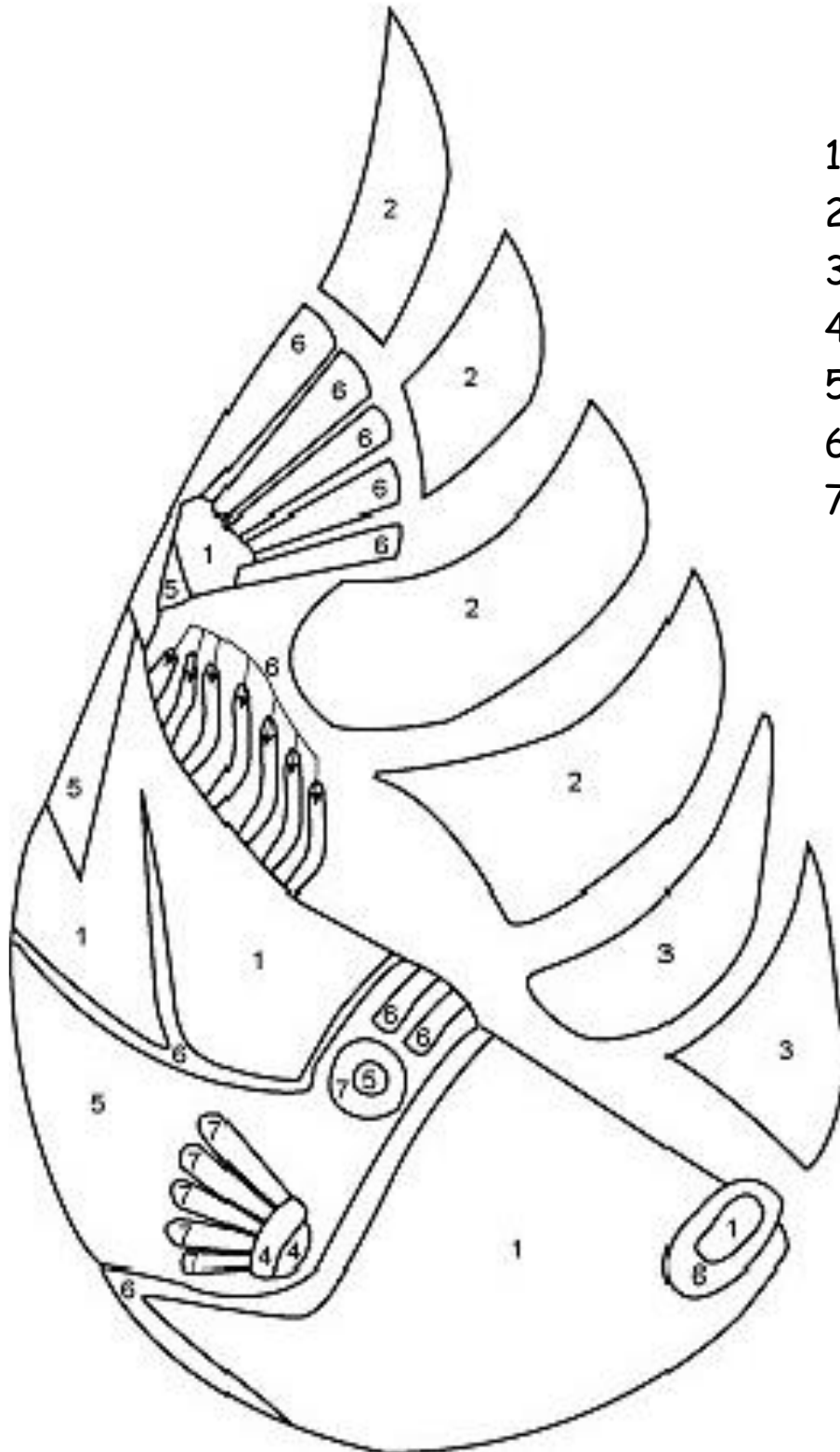
23	8	5	14

23	9	14	4	25



Malama I Kai Wai

Try your hand coloring in the fish from the *Malama I Ka Wai* "Protect Our Water" logo using the number assignments.



1. Yellow
2. Green
3. Blue
4. Red
5. Black
6. Gray
7. White



Dirty Words

Find the words spelled across, backwards, up, down, and diagonally.

BEACH	HERBICIDE	RAIN	STREAM
ENVIRONMENT	OCEAN	RECYCLE	SURF
FERTILIZER	OIL	REEFS	SWIM
FISH	POLLUTION	STORM DRAIN	TRASH
HAWAII	PROTECT	STORMWATER	WASTE

D	J	Q	Y	F	W	I	C	C	H	S	E
E	N	V	I	R	O	N	M	E	N	T	L
T	G	S	F	U	Z	A	R	L	I	O	C
S	W	I	M	S	K	B	J	K	G	R	Y
A	T	Z	I	D	I	O	V	N	E	M	C
W	C	B	N	C	J	F	O	I	Q	W	E
D	H	S	I	F	X	I	C	A	M	A	R
B	R	D	S	Z	T	Y	E	R	P	T	K
G	E	U	M	U	H	B	A	D	D	E	T
C	H	A	L	A	R	W	N	M	Q	R	R
D	X	L	C	G	E	K	Y	R	J	E	S
G	O	L	M	H	J	R	J	O	Z	E	A
P	R	O	T	E	C	B	T	T	C	F	H
V	A	V	L	U	Q	P	X	S	P	S	V
Y	I	R	E	Z	I	L	I	T	R	E	F
Q	N	K	H	A	W	A	I	I	O	N	X



Brain Drain

Unscramble the words to complete the sentences.

_____ (ANRI) provides fresh drinking water and helps trees, grass, and plants grow. However, when it rains, _____ (RSTHA), _____ (ILO), and used carwash _____ (AOPS) goes down the street curb and can wash into the _____ (ORTSM) drains, which takes all of that pollution straight to our _____ (CAEON).

Here are some great ways you can help prevent pollution:

1. Never _____ (PDMU) anything down a storm drain.
2. Wash your car on _____ (SASRG) or at a car wash.
3. Clean up after your _____ (ODG).
4. Put all trash in the correct _____ (IBN).
5. _____ (EYCCLER) when you can!





This information is provided by the State of Hawaii, Department of Transportation, Airports as part of their public outreach and education.

For more information, contact us:
DOTA AIR-EE
Daniel K. Inouye International Airport
400 Rodgers Boulevard, Suite 700
Honolulu, Hawaii 96819

<https://hidot.hawaii.gov/airports/doing-business/engineering/environmental/>

