

HDOT-Harbors 2016 Tenant Stormwater Awareness Training



MĀLAMA I KE KAI

Protect our Harbor Waters



Agenda

1. Welcome

- Randal Leong, Section Head of Environmental Section

2. Opening Addresses

- Darrell Young, Deputy Director Harbors Division
- Anna Fernandez, Program Manager, DOT Env. Compliance

3. TEMY Award

4. Stormwater Awareness Training Presentation

- Nate Hunter, EnviroServices
- Kahi Pacarro, Sustainable Coastlines
- Spencer Yim & Steve Dale, Harbors AMS



Honorable Mention

Tenant Environmental Manager of the Year

Mr. Edward Au; Asphalt Hawaii

Mr. Frank Roznerski; Hawaii Stevedores, Inc

Mr. Marshall Joy; JEMS Enterprises, LLC

Ms. Keahi Birch; Matson Navigation Company, Inc

Mr. Andrew Souza; McCabe, Hamilton & Renny Co., Ltd.

Mr. Welbert Barber; Nanakuli Neighborhood Housing Services, Inc.

Mr. Ralph Dewitt; P&R Water Taxi, Ltd.

Ms. Shanyn Kauihou; PENCO

Mr. Vincent Gallo; Pacific Shipyards International, LLC

Mr. Tor Harris; Sea Engineering, Inc.

Mr. Ross Barnes; University of Hawaii Marine Center



Runner Up

Tenant Environmental Manager of the Year



Ms. Jamie Feldhacker
Grace Pacific Corporation, LLC

Mr. Stephen Hinton
Marisco, Ltd.

Ms. Zoe Williams
Hawai'i Gas

Mr. Nathan Kapule
Young Brothers, Ltd.



2016 Tenant Environmental Manager of the Year

Congratulations!

Dane R. Wurlitzer
Hawaiian Cement



Training Outline

1. Harbors Background
2. Storm Drain System
3. Permits and Requirements
4. Tenant Inspections
5. Rules and Regulations
6. Good Housekeeping Practices

- BREAK -

7. Sustainable Coastlines
8. Illicit Discharge
9. Spill Response
10. Construction / Post-Construction
11. AMS/CityWorks® – Spencer Yim & Steve Dale
12. Questions
13. Training Evaluation (*necessary to get credit for class)



1853

Harbor Beginnings



1920 - 1930



Aloha Tower Welcomes Tourists



Today



11 Million Tons of Cargo
500,000 Cruise Ship Passengers

MĀLAMA I KE KAI - PROTECT OUR HARBOR WATERS



Environmental Goals



Clean Water

Healthy Fish

Sustainable
Environment



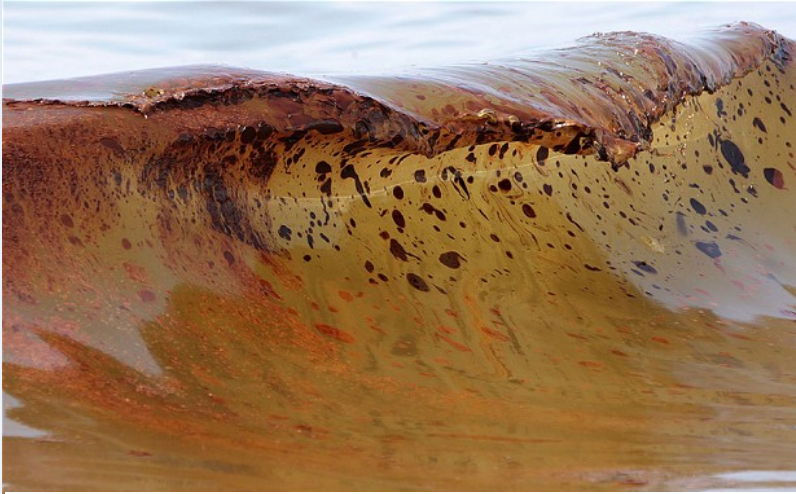
Storm Drain System



Designed to carry
untreated stormwater
directly into the Harbor



Prevention



How can we prevent this?



Consent Decree

Case 1:14-cv-00408-JMS-KSC Document 11 Filed 11/05/14 Page 1 of 68 PageID #: 49

IN THE UNITED STATES DISTRICT COURT
FOR THE DISTRICT OF HAWAII

UNITED STATES OF AMERICA, *et al.*,)
Plaintiffs,)
v.)
HAWAII DEPARTMENT OF)
TRANSPORTATION,)
Defendant.)

Civil Action No. _____

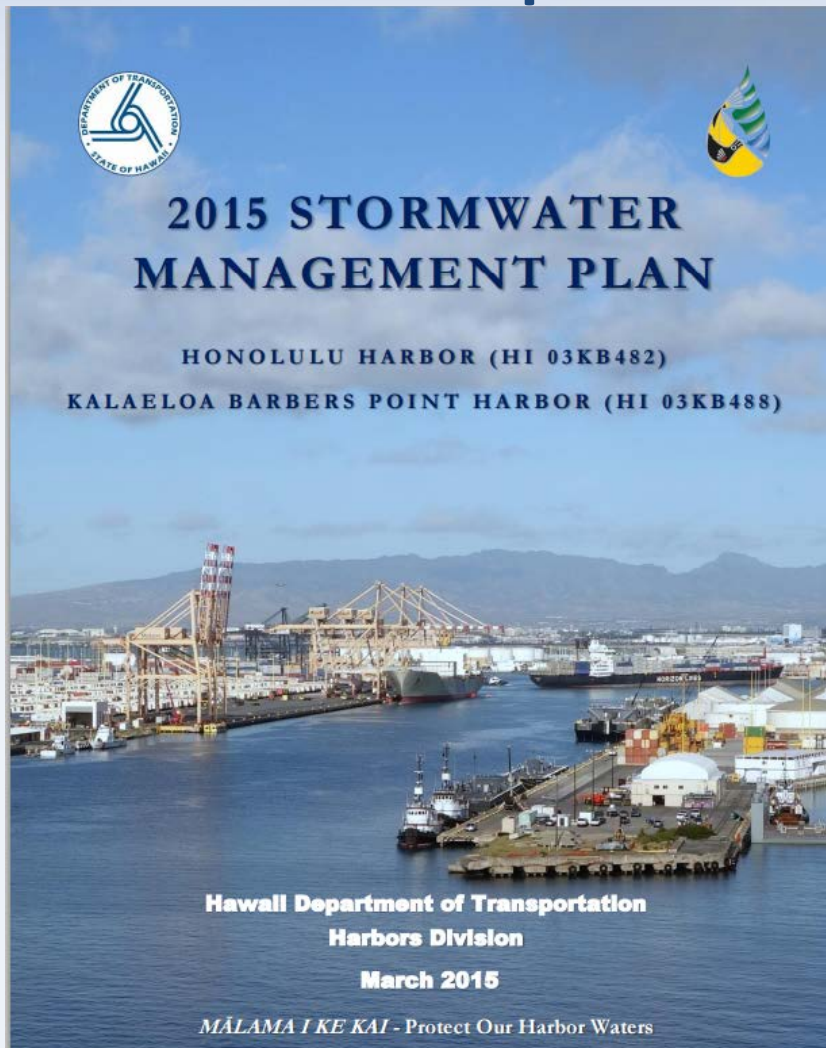
CONSENT DECREE

<http://hidot.hawaii.gov/harbors/files/2013/01/Consent-Decree.pdf>

- November 2014, Harbors Division entered into a Consent Decree with EPA/DOH
- Storm water compliance with:
 - Clean Water Act
 - National Pollutant Discharge Elimination System (NPDES) Permits
- Available on Harbors website



Permits & Requirements



MS4 National Pollutant
Discharge Elimination
System (NPDES) Permits

Storm Water
Management Plan
(SWMP)

<http://hidot.hawaii.gov/harbors/files/2013/01/Final-SWMP-150325.pdf>

MĀLAMA I KE KAI - PROTECT OUR HARBOR WATERS



Tenant Inspection Manual

Final

Harbors Tenant Inspection Manual



State of Hawaii
Department of Transportation
Harbors Division
79 South Nimitz Highway
Honolulu Hawaii 96813-5898

August 2014

Version 9.0

PROTECT OUR OCEAN WATER – MĀLAMA I KE KAI

Let's Work Together!

http://hidot.hawaii.gov/harbors/files/2013/01/2014-Tenant-Inspection-Manual_Final1.pdf

MĀLAMA I KE KAI - PROTECT OUR HARBOR WATERS



Harbors Inspections



Be Prepared!

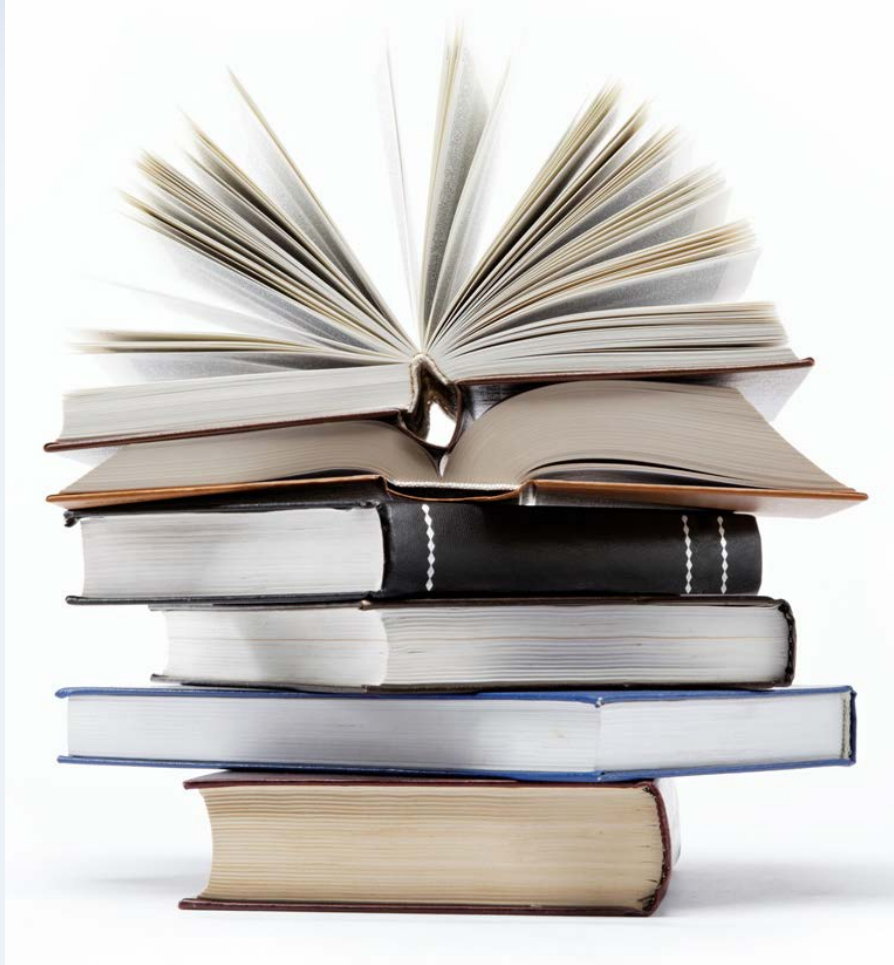
A great tool to identify:

- **How** to reduce pollutants
- **Share** information between Harbors personnel and tenants

See the registration table after the presentation to schedule an inspection.



Know the Regulations



1. Industrial NPDES
2. Vessel General Permit
3. Harbors Washing Approval
4. Spill Prevention, Control, and Counter Measure (SPCC)
5. Tier II
6. Hazardous Waste



1. Industrial NPDES Permits

Provided by DOH and allows the discharge of stormwater associated with industrial activities, such as:

- Material Handling and Storage
- Equipment Cleaning
- Maintenance and Repair
- Fueling
- Washing
- Sanding and Painting

Conditions of the Permit:

- Storm Water Pollution Control Plan (SWPCP)
- Stormwater sampling



2. Vessel General Permit



Section 401 WQC Discharges from Non-Recreational Vessels

<https://www.epa.gov/npdes/vessels>



3. Harbors Washing Approval

- Include in submittal:
 - Washing SOP
 - What is being washed
 - Pressure sprayer flow rate
 - Vacuum rate
 - Schematic of containment and drains
 - Holding container capacity
 - Waste disposal plan
- Contact the Harbors Environmental Section to discuss further



4. SPCC Plan

Required if
>1,320 gallons
of petroleum
are stored

40 CFR 112



Make sure you have a SPCC Plan and **FOLLOW IT!**



5. Tier II Chemical Inventory



HRS 128E

10,000 lbs of
a hazardous
substance

Gasoline =
1,800 gallons

Diesel =
1,500 gallons



6. Hazardous Waste

HAR 11-260



Make sure you label and store drums correctly!



7. Universal Waste

Examples:

- Fluorescent lamps,
- Batteries, and
- Anything with mercury

HAR 11-273



Good Housekeeping



MĀLAMA I KE KAI - PROTECT OUR HARBOR WATERS



Hand Washing

Keep It
Contained



Fueling



Remain
Vigilant

Be Prepared



Maintenance

Conduct Maintenance Under Cover



Remember to practice **good housekeeping** around your facility.



Vehicle and Equipment Storage

Remember to
use a **drip pan**
under vehicles!



Material Storage



How should these drums be stored?



Drain Inlet Protection



Filter Fabric



Stenciling



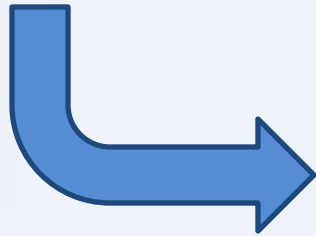
Be aware of the storm drains on at your facility.



Correct Deficiencies



20 Days to
Correct



What is the potential deficiency?



What good housekeeping practice can be implemented to avoid a deficiency?



Enforcement

- Oral or Verbal Warning
- Written Warning
- Notice of Apparent Violation
- Summons or Citations
- Notice of Finding of Violation and Order
- DOH (Up to \$25,000)



Break



MĀLAMA I KE KAI - PROTECT OUR HARBOR WATERS



Sustainable Coastlines



For information, visit:
<http://www.sustainablecoastlineshawaii.org/>



Allowable Discharges

Permitted by DOH/EPA:

1. Daily Operations

- Water line flushing
- Air conditioning condensate
- Landscape irrigation
- Discharges from potable water sources and foundation drains



2. Groundwater

- Rising groundwater (tidal intrusion)
- Uncontaminated groundwater infiltration
- Uncontaminated pumped groundwater

3. Natural Origin

- Springs

4. Emergencies

- Discharge from fire fighting activities



Illicit Discharge

Any non-stormwater discharge that poses a risk to the environment.



Illicit Discharge



Uncontained materials over a trench drain and near pier's edge.



Illicit Discharge



Debris from sand blasting



Illicit Discharge



Be sure to regularly inspect your facility to identify and clean any oil stains.



Illicit Discharge?



Uncontained air conditioning condensate is **NOT** an illicit discharge.



Illicit Discharge?



Do not dump mop water into a storm drain



Illicit Discharge?



Be aware and dispose of gloves properly.



Illicit Discharge?

Soapy water is an illicit discharge



Remember to get Harbors approval to wash!



Spill Response



1. Assess the Risk
2. Select PPE
3. Confine the Spill
4. Stop the Source



Spill Response



5. Clean-up
6. Decontaminate and Dispose of Wastes
7. Complete Required Report



Spill Notifications

- Notify Harbors of spills.
 - 24/7: 808-587-2076 (Harbor Traffic Control Unit).
- National Response Center.
 - 800-424-8802.
- Department of Health, HEER
 - 586-4249.
- Department of Health, CWB.
 - 586-4309.



Construction / Post-Construction





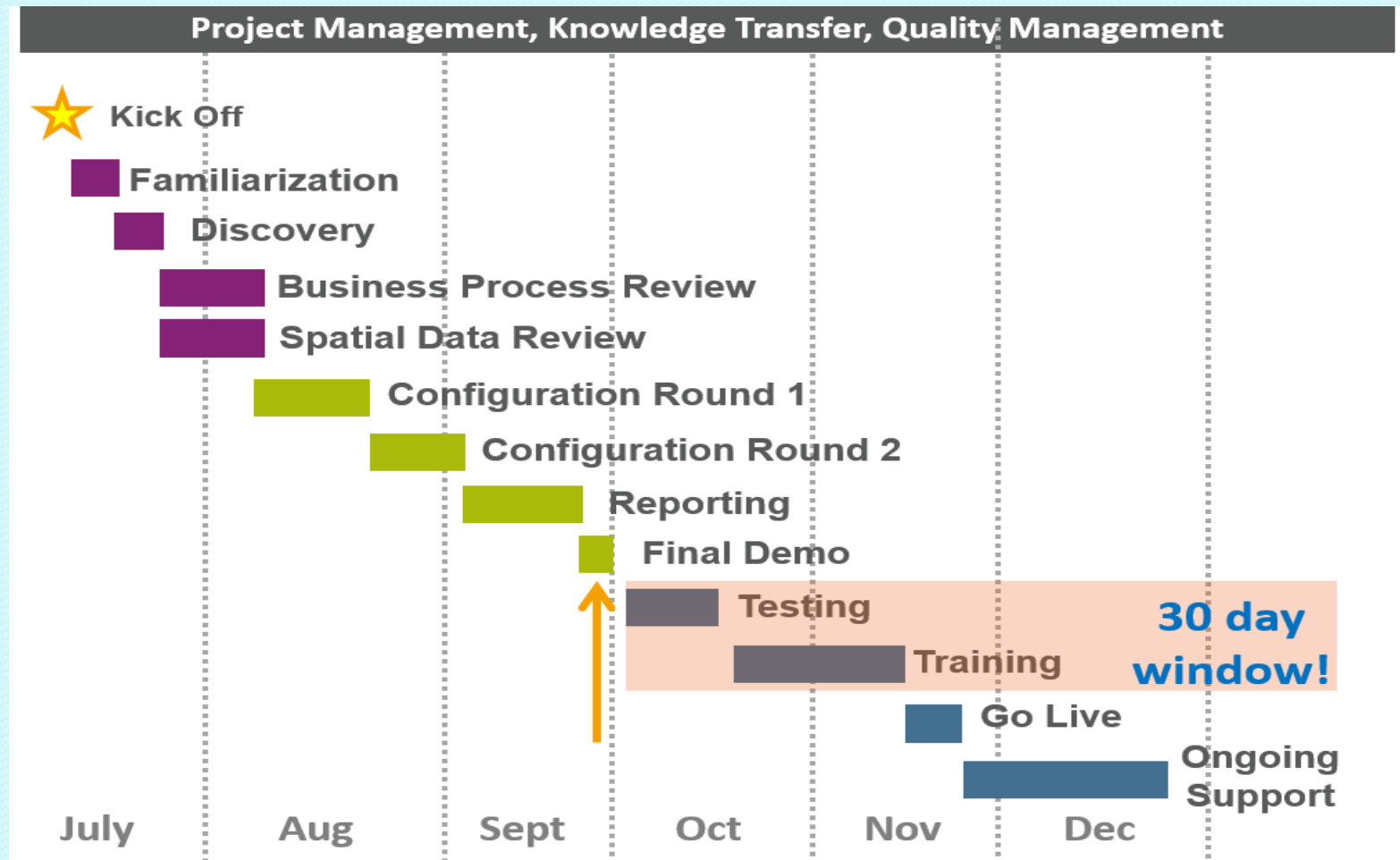
HDOT Harbors CITYWORKS® AMS DEMONSTRATION for 2016 TENANT TRAINING

August 25TH & September 15TH, 2016

Mālama I Ke Kai! - Protect Our Harbor Waters!



Cityworks® Development Chronology (2015)



Mālama I Ke Kai! - Protect Our Harbor Waters!



Cityworks Asset Management System (AMS)



- WSCA contract awarded to SHI-Azteca-Woolpert team in June 2015 .
- COTS software selected: Azteca Cityworks Computerized AMS.
- GIS-centric; only requires Internet access.
- July – Nov. 2015: Woolpert designed, configured, tested, demonstrated, trained & deployed Cityworks AMS for our stormwater program at Honolulu Harbor & KBPH.
- Custom designed to satisfy 2014 CD requirements, 2015 SWMP & our SSS O&M Plan.
- Trained 3 Administrators & 5 Trainers in HAR-E for continued on-site support.
- System went 'live' on Nov. 16, 2015.
- Live demonstration by Steve Dale.



Mālama I Ke Kai! - Protect Our Harbor Waters!

Questions

- Harbors Stormwater Website:

<http://hidot.hawaii.gov/harbors/library/storm-water-management/>

- Harbors Division Environmental Contacts:

- Reporting Hotline (Harbor Traffic Control): 587-2076
- Randal Leong, P.E.: 587-1962, randal.leong@hawaii.gov
- Joy Zhang, P.E.: 587-1960, ying.j.zhang@hawaii.gov
- Spencer Yim, P.E., 587-1963 Spencer.K.Yim@hawaii.gov
- Michele Freitas: 587-1976, michele.gn.freitas@hawaii.gov

- Harbors Division Property Management Contacts:

- Carl Young, 587-1945, carl.g.young@hawaii.gov
- Patti Miyashiro, 587-1942, patti.e.miyashiro@hawaii.gov



Training Questionnaire Review

1. Which of the following activities can generate stormwater pollutants?

- a. Off-site tracking of sediment on paved roads.
- b. Uncontained aggregate handling between vessels and the shore.
- c. Uncontained equipment washing.
- ☒ d. All of the above.

2. True or False? Stormwater runoff normally discharges through the storm drain system and empties into the harbor without any treatment.

- ☒ a. True
- b. False

3. Which of the following are permitted to be discharged into the storm drain?

- a. Unpolluted AC condensate water.
- b. Gasoline, diesel, used oil, and paints.
- c. Rainwater
- ☒ d. a and c.

4. What is the definition of an illicit discharge?

- a. An illegal forward pass.
- ☒ b. A non-stormwater discharge that poses a risk to the environment.
- c. Use of a stolen credit card.
- d. An indecent cargo movement.

5. The picture below is a good example of a Best Management Practice (BMP) because:

- a. Drums are inside and under cover.
- b. Oil is not a pollutant.
- ☒ c. Drums are properly marked and equipped with secondary containment.
- d. None of the above.



6. True or False? Every tenant that handles chemicals should have a spill kit on-site to promptly respond to spills that may occur.

- ☒ a. True
- b. False

7. Which of the following are good examples of BMPs?

- a. Pick up litter on the ground
- b. Promptly responding to a spill
- c. Using a drip pan for a leaking vehicle until maintenance can be completed
- ☒ d. All of the above

8. True or False? Mud and dirt on the ground should be washed down the storm drain using a water hose.

- a. True.
- ☒ b. False.

9. If construction activities are planned for a tenant space at Honolulu Harbor or Kalaeloa Harbor, what is required?

- a. Tenant must obtain consent from HDOT Harbors Division during the design phase.
- b. Tenant must obtain permits from relevant agencies prior to the start of construction.
- c. Tenant must follow the requirements of the Harbors Construction Site Runoff Control Manual.
- ☒ d. All of the above.

10. True or False? According to the Hawaii Revised Statutes, an environmental violation may lead to criminal penalties.

- ☒ a. True.
- b. False.



- Please return your questionnaire and training evaluation form before you leave.

