



STATE OF HAWAII  
DEPARTMENT OF TRANSPORTATION  
80 KUHIO STREET  
HILO, HAWAII 96720

May 21, 2021

HARBOR MASTER NOTICE NO. 02-21

U.S. MILITARY OPERATIONS AND THE FEDERAL DOD FOOTPRINT  
AT KAWAIHAE HARBOR

EFFECTIVE MAY 21, 2021

Effective May 21, 2021, Hawaii District Manager/Kawaihae Harbor Master directs the U.S. Army Garrison Pohakuloa (PTA) to adhere to the following guidelines for the military operations that occur in the areas set aside for said operations in Executive Order No. 1759 (see attachment "EXHIBIT A").

**General Operations**

1. All roll-on and roll-off equipment and supplies will be staged in those areas highlighted in yellow as directed in Executive Order No. 1759. All ammunition will be last on-loaded on out going vessels and first off-loaded from any incoming military or chartered vessel entering the Kawaihae Commercial Harbor. Ammunition off-loaded at a state commercial pier must be the first cargo off-loaded and leave the facility immediately. To maintain situational awareness, when ammunition is held in the DOD compound the Harbor Master, Assistant Harbor Master or the Marine Cargo Specialist shall be informed.
2. Any military activity that occurs outside the DOD designated footprint must be cleared by the Harbor Master, Assistant Harbor Master, or the Marine Cargo Specialist.
3. All military or military chartered vessels that tie up to a state commercial pier must submit a booking request through [hawaiiportcall.com](http://hawaiiportcall.com). Military and military chartered vessels at state commercial piers shall adhere to State Harbors, Federal and Coast Guard rules and regulations.
4. Military vehicles or shipping containers are not to be staged on a state commercial pier for convoy to PTA. Military personnel are to be provided for prompt removal of vehicles and shipping containers to the DOD area.
5. Military personnel shall be posted for traffic control for public traffic that may need to traverse the DOD corridor from the LSV ramp to the DOD compound or staging areas.

6. During military operations, the safety of the public is the responsibility of the military in those areas designated in Executive Order No. 1759.
7. Gate No. 1 and Gate No. 11 are locked from dawn to dusk. Military personnel can obtain the security guards' post phone number at the main gate. Gate No. 11 will be unlocked by State Harbors security guards as needed for military operations. When Gate No. 1 is locked, military personnel will enter and exit the harbor facility via Gate No. 2.

For questions concerning this notice, contact Jeff Hood at (808) 933-8850.

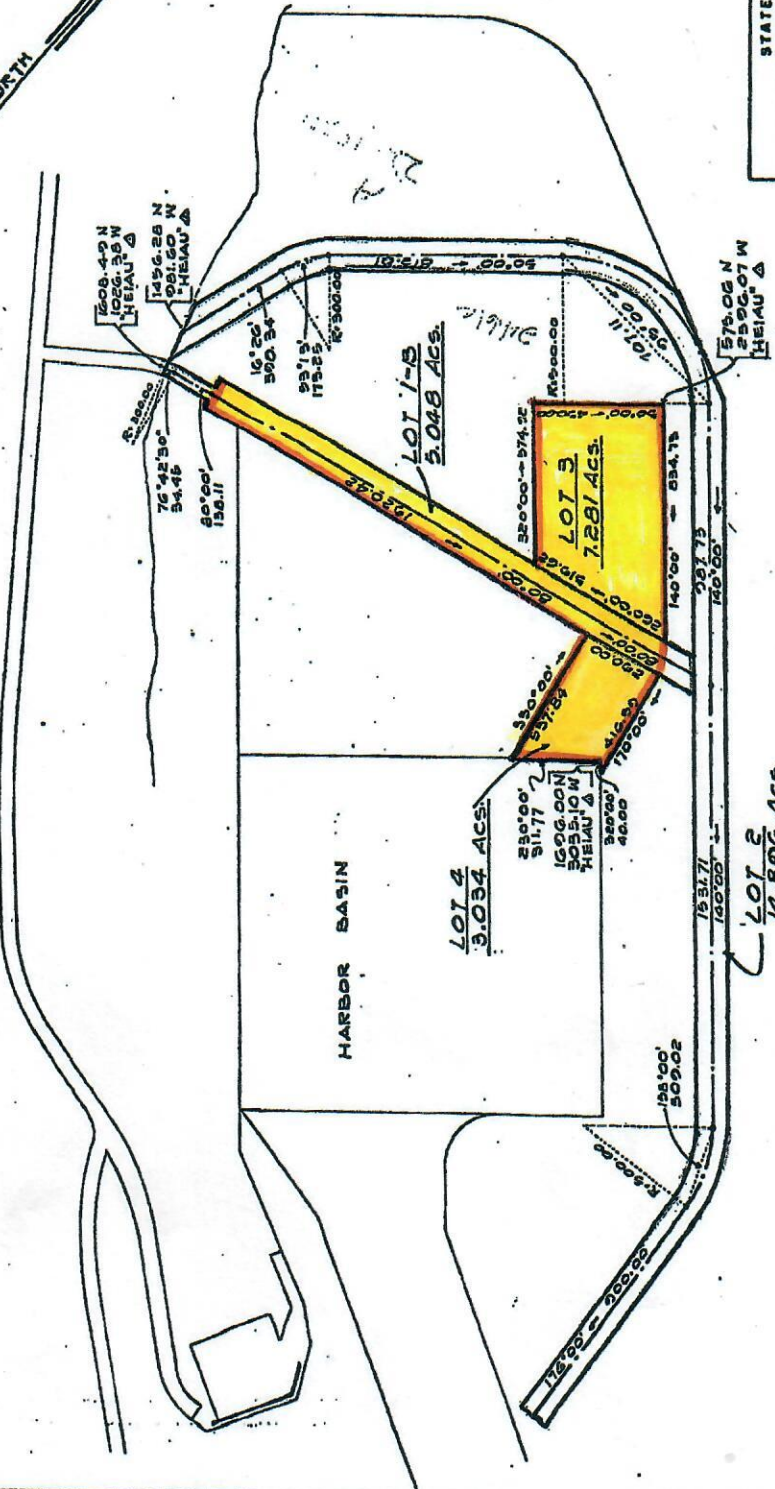
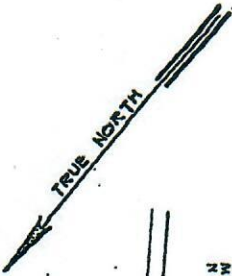
By Order of the Harbors District Manager/Kawaihae Harbor Master:

  
\_\_\_\_\_  
Jeff D. Hood  
Harbors District Manager  
Kawaihae Harbor Master

May 21, 2021  
Date

# EXHIBIT A

621



STATE OF HAWAII  
 DEPARTMENT OF TRANSPORTATION  
 HARBORS DIVISION

GOVERNOR'S EXECUTIVE ORDER 1759  
 LOTS 1-B, 2, 3 AND 4  
 AT KAWAIIAE HARBOR  
 SOUTH KOHALA, HAWAII

Prepared by: HB. June 1, 1971 PERMIT NO.

