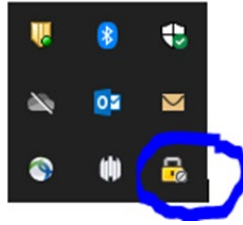
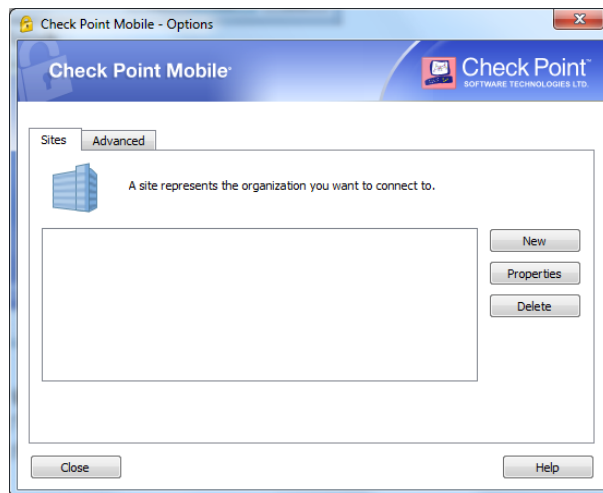


How to configure a new Remote Access site

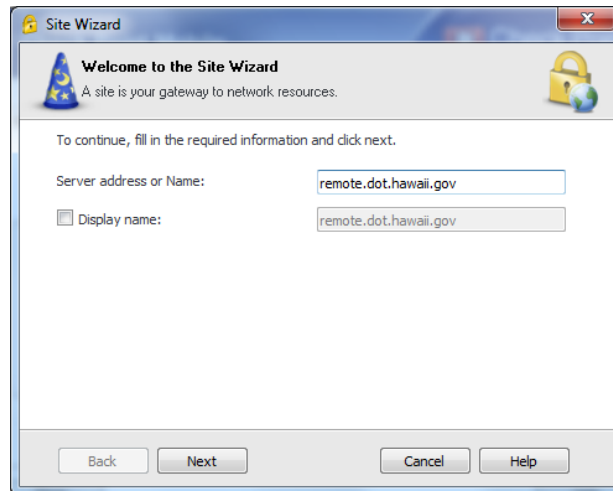
1. Right click the Check Point Mobile icon in the hidden icons at the bottom right on taskbar and select VPN Options)



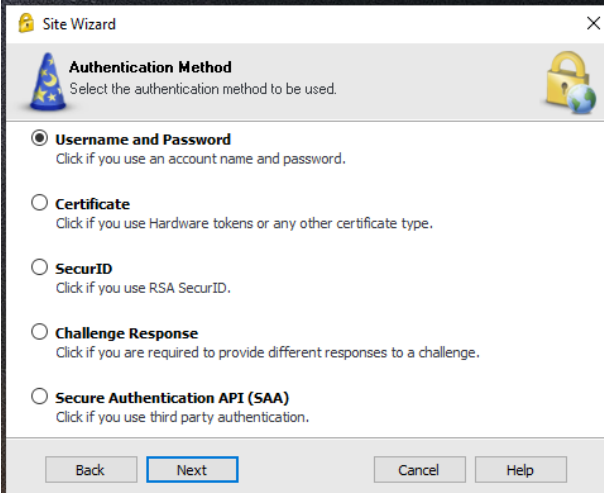
- a. Delete the existing site (remote.dot.hawaii.gov)
- b. Then select New



- c. Enter server address name: **remote.dot.hawaii.gov**



- d. Select an Authentication Method -
 - i. For Software Token users, select Username and Password.
 - ii. For Hardware Token users, select SecurID.



The image shows a 'Site Wizard' dialog box with a title bar containing a lock icon, the text 'Site Wizard', and a close button. The main area is titled 'Authentication Method' with a wizard hat icon on the left and a padlock icon on the right. Below the title, it says 'Select the authentication method to be used.' There are five radio button options: 'Username and Password' (selected), 'Certificate', 'SecurID', 'Challenge Response', and 'Secure Authentication API (SAA)'. Each option has a brief description. At the bottom, there are four buttons: 'Back', 'Next' (highlighted with a blue border), 'Cancel', and 'Help'.

Site Wizard

Authentication Method
Select the authentication method to be used.

☒ **Username and Password**
Click if you use an account name and password.

☐ **Certificate**
Click if you use Hardware tokens or any other certificate type.

☐ **SecurID**
Click if you use RSA SecurID.

☐ **Challenge Response**
Click if you are required to provide different responses to a challenge.

☐ **Secure Authentication API (SAA)**
Click if you use third party authentication.

Back Next Cancel Help

- e. Click Save and Close.
- f. Then connect as normal.