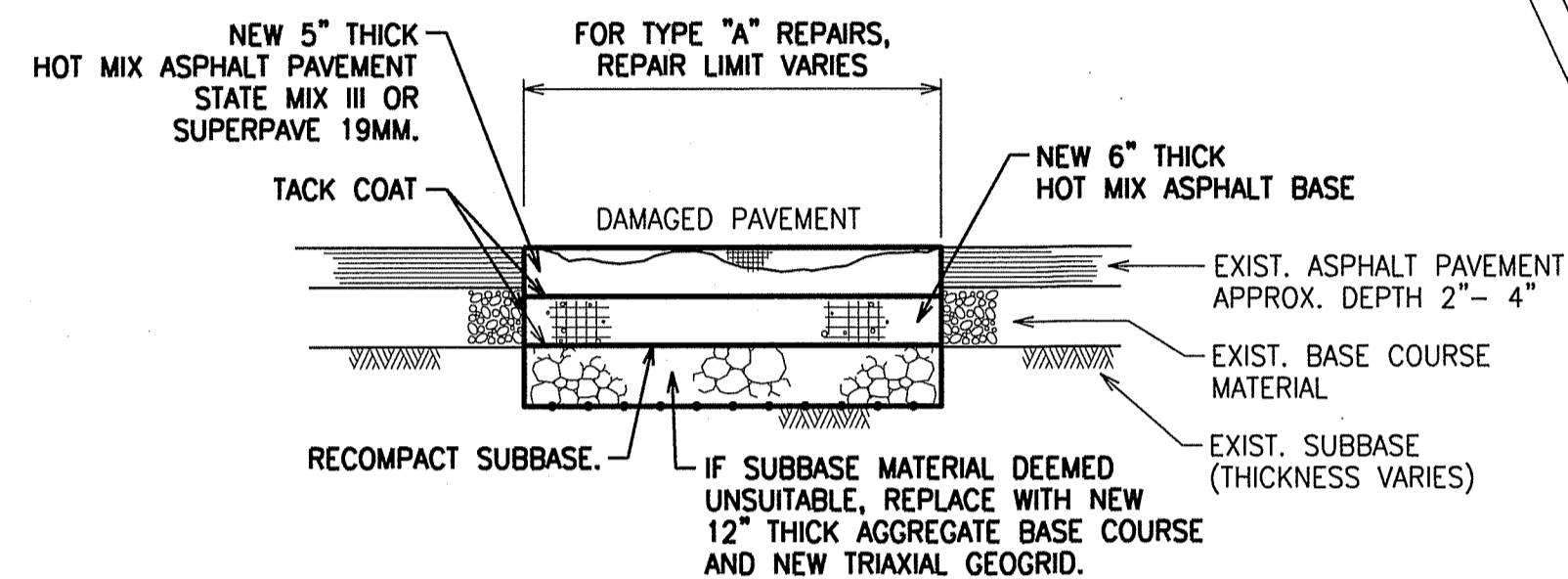
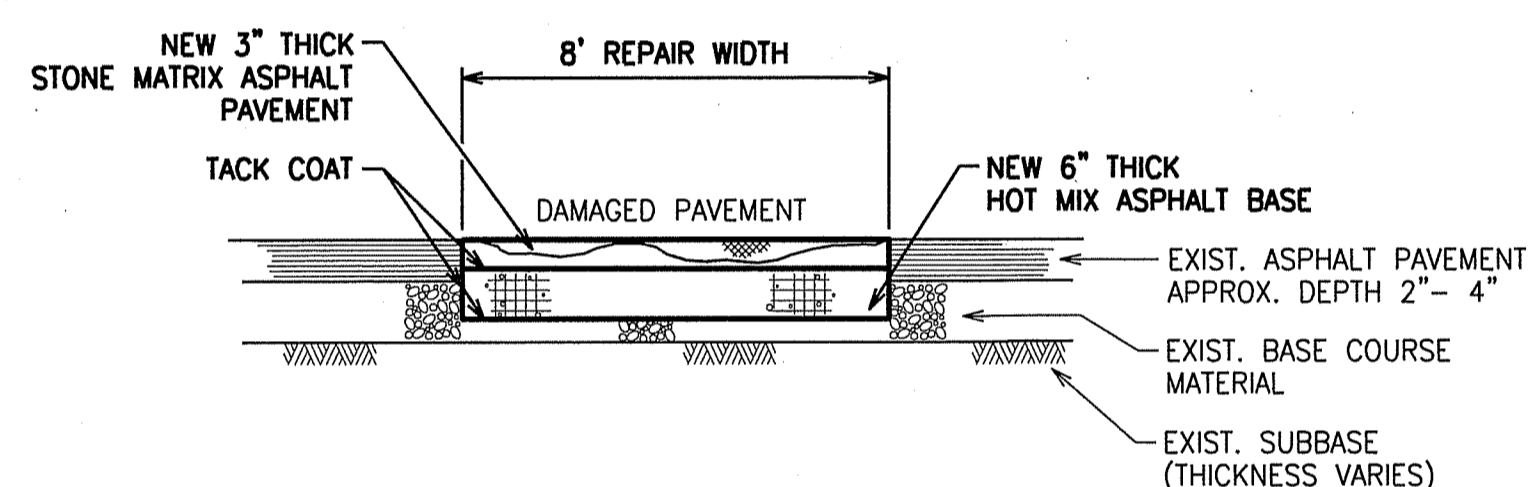


HONOLULU HARBOR - SAND ISLAND CONTAINER YARD



TYPE "A" REPAIR DETAIL

NOT TO SCALE



TYPE "B" REPAIR DETAIL

NOT TO SCALE

REPAIR NOTES:

1. THE LIMITS OF THE WORK SHALL BE DETERMINED IN THE FIELD BASED UPON ACTUAL AREAS AND DIMENSIONS. CONDITIONS ARE EXPECTED TO BE ALTERED BETWEEN TIME OF INITIAL SURVEY AND ACTUAL CONSTRUCTION.
2. THE LOCATIONS AND SIZES OF THE VARIOUS REPAIR TYPES ARE NOT ALL SHOWN ON THE CONTRACT PLANS.
3. THE QUANTITY OF REPAIRS SHOWN IN THE PROPOSAL SCHEDULE IS AN APPROXIMATION AND FOR BIDDING PURPOSES ONLY.
4. THE CONSTRUCTION ENGINEER WILL NOTIFY THE CONTRACTOR WHEN SUCH WORK WILL BE DONE. THE CONSTRUCTION ENGINEER, CONTRACTOR, AND TENANT WILL MEET AT THE JOB SITE TO LOCATE AND MARK THE REPAIR AREAS AND DETERMINE THE TYPE OF REPAIR WORK TO BE DONE.
5. THE EXISTING ASPHALT PAVEMENT AND BASE COURSE MATERIAL REQUIRING REMOVAL SHALL NOT BE STORED BUT HAULED AWAY FROM THE JOB SITE AND DISPOSED OF BY THE CONTRACTOR.
6. PLACE PAVEMENT MARKINGS AS NEEDED.
7. SEE SPECIFICATIONS FOR ADDITIONAL INFORMATION.

TYPE "A" REPAIRS:

1. REMOVE EXISTING DAMAGED ASPHALT PAVEMENT AND BASE COURSE MATERIAL BY COLD-PLANING.
2. REWORK EXISTING SUBBASE (IF REQUIRED).
3. APPLY BITUMINOUS TACK COAT.
4. PLACE 6-INCH THICK HOT MIX ASPHALT BASE COURSE.
5. APPLY BITUMINOUS TACK COAT.
6. PLACE 5-INCH THICK STATE MIX III OR SUPERPAVE 19MM ASPHALT PAVEMENT.

TYPE "B" REPAIRS:

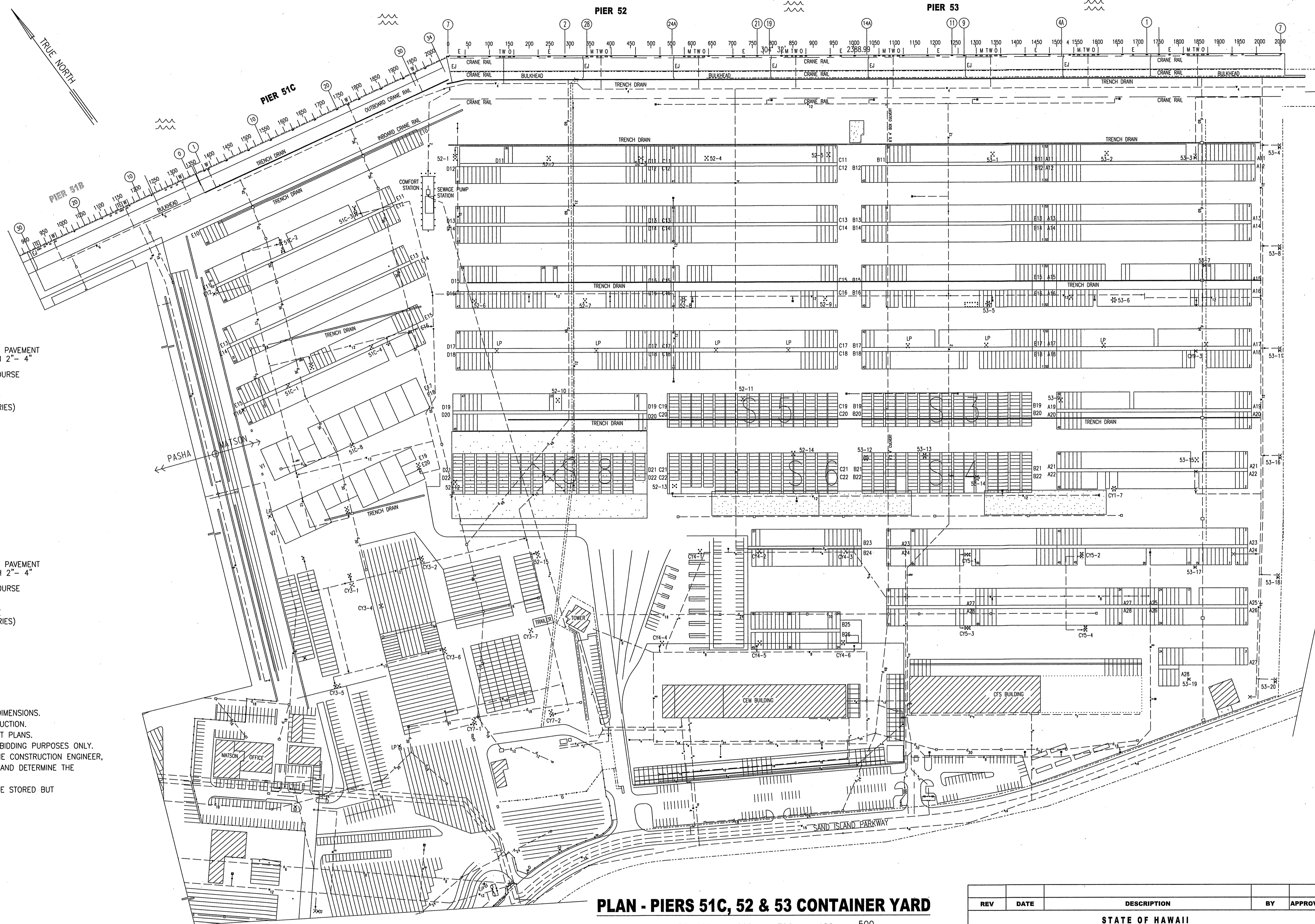
1. REMOVE EIGHT (8) FEET WIDE EXISTING ASPHALT PAVEMENT AND BASE COURSE BY COLD PLANING.
2. APPLY BITUMINOUS TACK COAT.
3. PLACE 6-INCH THICK HOT MIX ASPHALT BASE COURSE.
4. APPLY BITUMINOUS TACK COAT.
5. PLACE 3-INCH THICK STONE MATRIX ASPHALT PAVEMENT.

TYPE "C" REPAIRS:

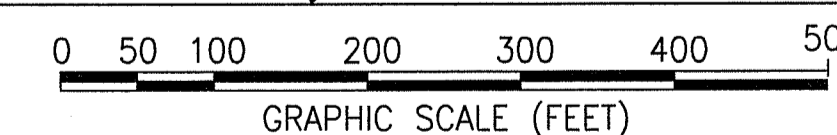
1. REMOVE 5-INCHES OF EXISTING ASPHALT PAVEMENT BY COLD-PLANING.
2. CLEAN EXISTING SURFACE OF ALL FOREIGN DEBRIS AND APPLY BITUMINOUS TACK COAT.
3. FILL AND LEVEL LOW SPOTS, LIMITS SHALL BE DETERMINED IN THE FIELD.
4. PLACE 5-INCH THICK STATE MIX III OR SUPERPAVE 19MM ASPHALT PAVEMENT.

TYPE "D" REPAIRS:

1. REMOVE 2-INCHES OF EXISTING ASPHALT PAVEMENT BY COLD-PLANING.
2. CLEAN EXISTING SURFACE OF ALL FOREIGN DEBRIS AND APPLY BITUMINOUS TACK COAT.
3. FILL AND LEVEL LOW SPOTS, LIMITS SHALL BE DETERMINED IN THE FIELD.
4. PLACE 2-INCH THICK STATE MIX V PAVEMENT.



PLAN - PIERS 51C, 52 & 53 CONTAINER YARD



NOTES FOR ENVIRONMENTAL PROTECTION:

1. THE CONTRACTOR SHALL COMPLY WITH THE NPDES PERMIT REQUIREMENTS AND HARBORS SWMP PROGRAMS FOR THE PROJECT. THE PREPARATION OF THE SWPPP SHALL FOLLOW HAWAII ADMINISTRATIVE RULES [HAR] 11-55 (EFFECTIVE FEBRUARY 9, 2019 AS AMENDED) APPENDIX C, SECTION 7.
2. THE CONTRACTOR SHALL SUBMIT THE SWPPP TO THE CONSTRUCTION ENGINEER PRIOR TO THE START OF WORK. FILTERS, BERMS, SILT FENCES OR EQUIVALENT BARRIERS SHALL BE PLACED AROUND ALL AFFECTED STORM DRAINS. BARRIERS SHALL BE MAINTAINED FOR THE EXTENT OF THE PROJECT.
3. THE CONTRACTOR SHALL NOTIFY HARBORS CONSTRUCTION ENGINEER AND ENVIRONMENTAL SECTION WHEN THE SITE IS READY FOR INITIAL SITE INSPECTION, PRIOR TO THE COMMENCEMENT OF ANY ON-SITE CONSTRUCTION ACTIVITIES INVOLVING GROUND DISTURBANCE.
4. POTENTIAL POLLUTANTS EXPECTED TO BE PRESENT ONSITE DURING CONSTRUCTION INCLUDE ASPHALT CONCRETE, EMULSIFIED ASPHALT, ASPHALT RELEASE AGENT, PETROLEUM BASED PRODUCTS, AND PAVEMENT MARKING PAINT. OTHER MATERIALS AND SUBSTANCES NOT LISTED SHALL BE ADDED TO THE INVENTORY.
5. IF ANY SPILLS, LEAKS, OR CONTAMINATED SOIL ARE ENCOUNTERED DURING THE COURSE OF THE PROJECT, THE CONTRACTOR SHALL MAKE APPROPRIATE NOTIFICATIONS AND INFORM THE CONSTRUCTION ENGINEER IMMEDIATELY (I.E. WITHIN 24-HOURS). HAZARDOUS WASTE MUST BE SEGREGATED FROM THE STORAGE OF ALL OTHER WASTES, PROPERLY CHARACTERIZED, AND PROPERLY DISPOSED OF AT A LICENSED FACILITY.

6. MATERIALS SHALL NOT BE STORED ON-SITE. MATERIAL MANAGEMENT PRACTICES SHALL BE USED TO REDUCE THE RISK OF SPILLS OR OTHER ACCIDENTAL EXPOSURE TO STORM WATER RUNOFF.
7. DURING FUELING, PROPER CONTAINMENT MUST BE EMPLOYED TO CATCH ANY SPILL/LEAK IN PLACE.
8. DISCHARGES OF EMULSION SHALL BE CONTAINED AND COLLECTED IMMEDIATELY USING ABSORBANT MATERIALS, ETC. SPILL KIT SHALL BE KEPT ON SITE. IN THE EVENT OF A PETROLEUM SPILL, INERT ABSORBENT MATERIAL (E.G. ZEP-O-ZORB) WILL BE USED ON A TIMELY BASIS SO THAT IT WILL NOT DEVELOP A SHEEN WHEN IT RAINS. ABSORBANT WILL BE PROPERLY DISPOSED OF AWAY FROM THE SITE.
9. ALL ONSITE VEHICLES SHALL BE MONITORED FOR LEAKS AND RECEIVE REGULAR PREVENTATIVE MAINTENANCE TO REDUCE THE CHANCE OF LEAKAGE. IN CASE OF LEAKAGE, OIL PANS OR OIL ABSORBANT MATERIAL TO CONTAIN ANY DRIPPING OIL OR HYDRAULIC FLUID WILL BE PLACED UNDERNEATH MACHINERY IF LEFT AT JOB SITE.
10. PROPERLY DISPOSE OF OLD OR SPILLED ASPHALT. COLLECT AND REMOVE BROKEN ASPHALT.
11. EXCESS SAND AND GRAVEL SHALL BE SWEEPED TO PREVENT DISCHARGE INTO THE STORM DRAINAGE SYSTEM.
12. PAVEMENT MARKING, COLD PLANING AND RESURFACING OPERATIONS SHALL NOT BE CONDUCTED DURING RAINY DAYS.
13. WATERING SHALL BE USED FOR DUST CONTROL. DUST CONTROL WATERING SHALL BE CONTROLLED TO PREVENT RUN-OFF.
14. WASHING OF EQUIPMENT WILL BE PERFORMED OFF SITE.
15. SEE SPECIFICATIONS FOR ADDITIONAL INFORMATION.

REV	DATE	DESCRIPTION	BY	APPROVED
STATE OF HAWAII DEPARTMENT OF TRANSPORTATION HARBORS DIVISION				
JOB TITLE FY22 ONE-YEAR MAINTENANCE CONTRACT FOR PAVEMENT REPAIRS AT PIERS 51C, 52 & 53 CONTAINER YARD HONOLULU HARBOR, OAHU, HAWAII				
SHEET TITLE LOCATION MAP, NOTES, REPAIR DETAILS PLAN - PIERS 51C, 52 & 53 CONTAINER YARD				
SUBMITTED BY: <i>[Signature]</i> SECTION HEAD		RECOMMENDED BY: <i>[Signature]</i> ENGINEERING PROGRAM MANAGER		
DESIGNED BY: EL DRAWN BY: EL CHECKED BY: AF DATE: JUL 2021 SCALE: AS SHOWN	APPROVED BY: <i>[Signature]</i> HARBORS ADMINISTRATOR JOB NUMBER H.C. 10830			SHEET 1 1 OF 1 SH.
FOR QUESTIONS, CONTACT HARBORS ENGINEERING MAINTENANCE AT 587-1877				

H. C. 10830 - FY22 ONE-YEAR MAINTENANCE CONTRACT FOR PAVEMENT REPAIRS AT PIERS 51C, 52 & 53 CONTAINER YARD