

Proposed Goals, Objectives and Policies Bike Plan Hawaii

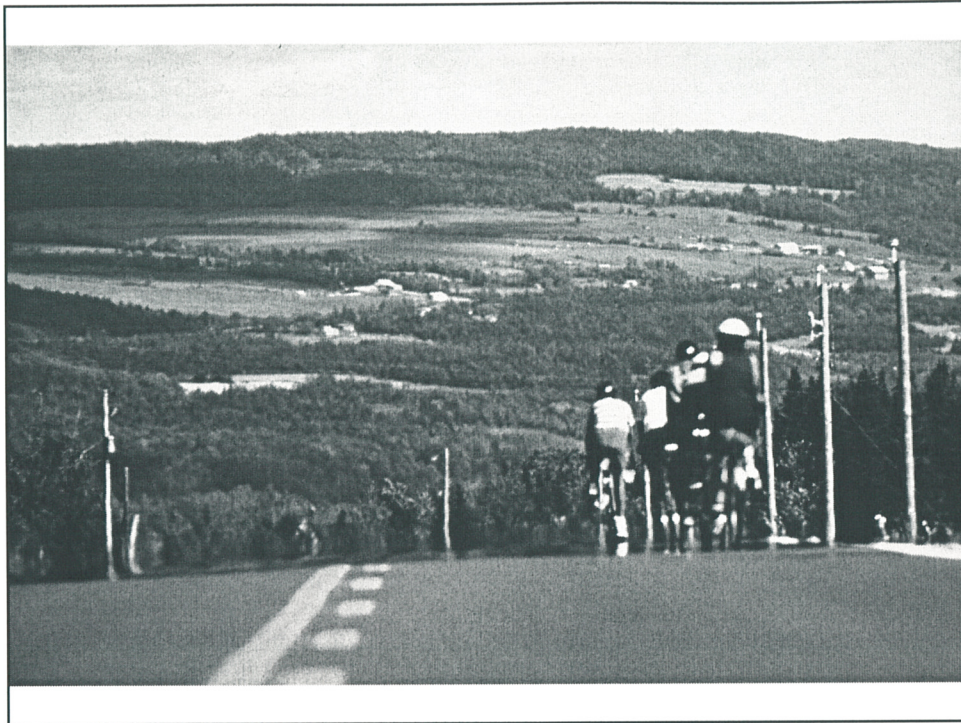
■ Encouragement

- Recommended Actions: (continued)
 - Coordinate and encourage the involvement of bicycle advocates, citizens and local officials in implementing projects and achieving the objectives of this plan
 - Develop, implement, and promote bicycle commuter incentive programs
 - Encourage employers to support more bicycle commuting
 - Support transportation conferences to promote and exchange ideas and information on bicycling in Hawaii and elsewhere



Design Problems and Solutions Bike Plan Hawaii

■ SCI presentation



Bicycling Brings Tourism \$

- Bike tourists tend to be young and affluent - with annual incomes of \$75,000+
- 1997 survey found that bike tourists in Delaware spend between \$35-\$85 per day
- Bike tourism in Vermont contributes more to the economy than the maple syrup industry

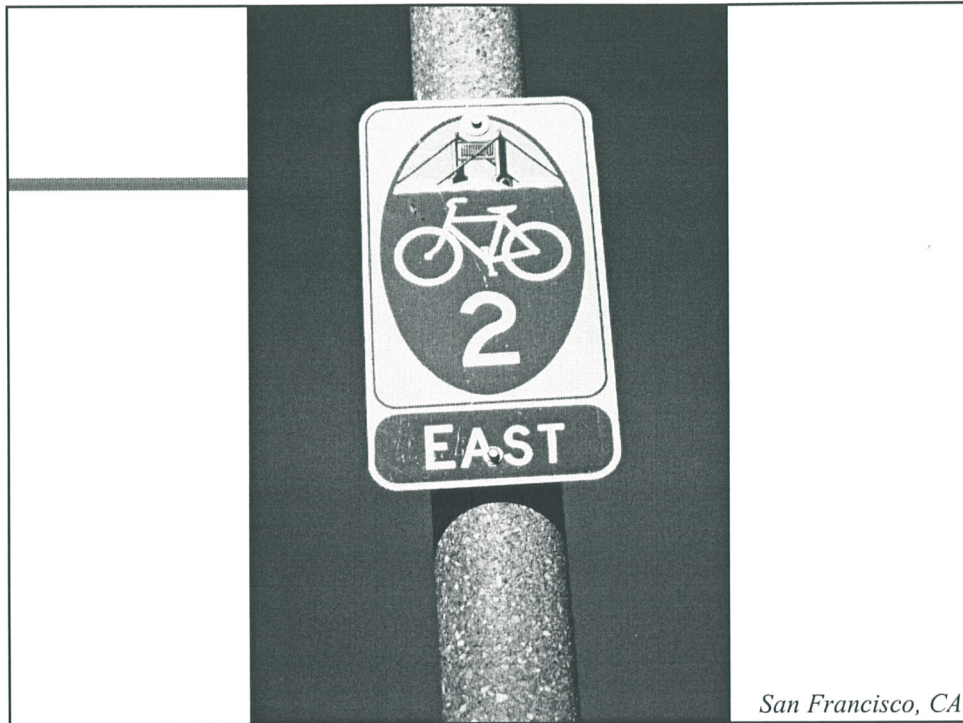
Sources: Adventure Travel Report, Delaware DOT

Bicycle Tourism

- Outdoor recreation is the second most popular activity for leisure travelers, behind shopping
- 1/3 of all leisure trips include some form of outdoor recreation
- 27 million travelers took bicycling vacations in past 5 yrs (ranks in the top three most popular outdoor vacation activities)

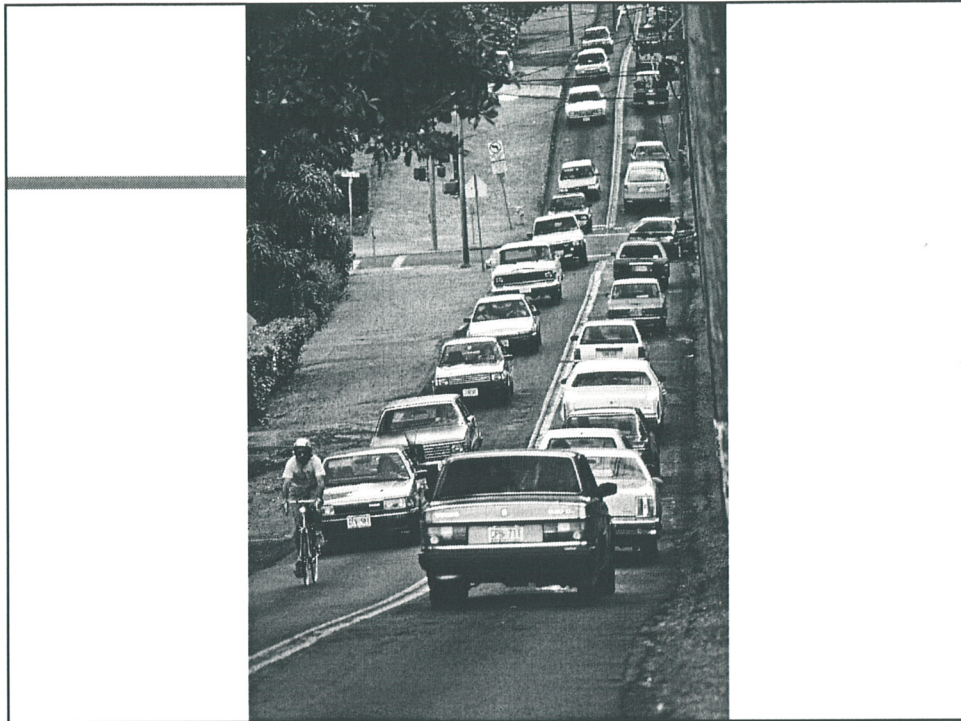
Source: Travel Industry Association (TIA)





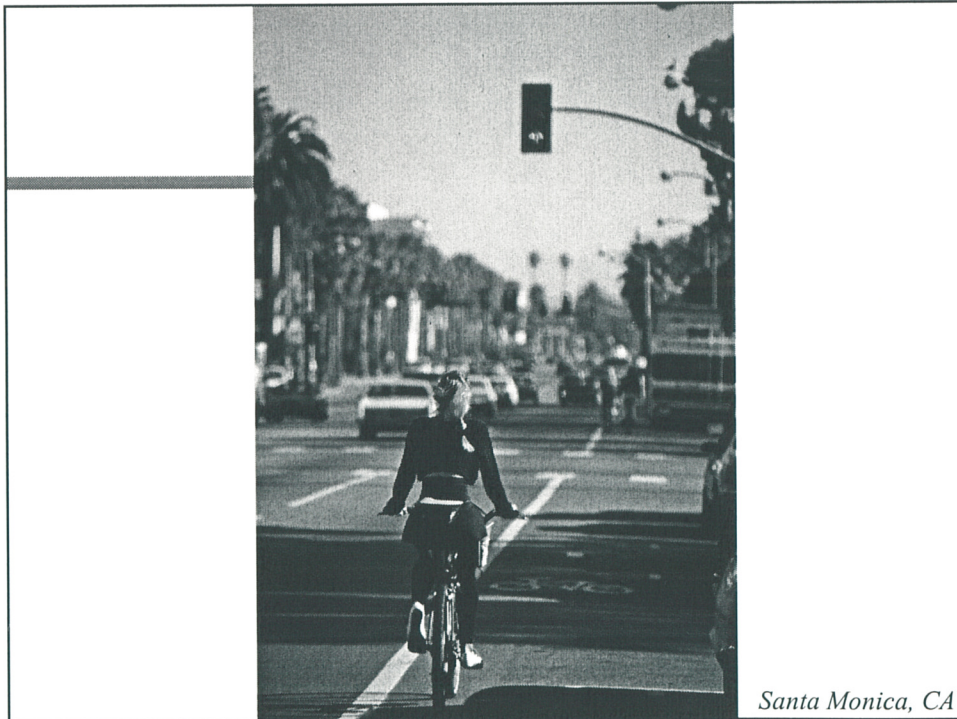
Bicycle LOS A





Bike Lanes





Santa Monica, CA



Sarasota, FL



Ft. Lauderdale, FL

Wachtel Study Conclusions

1. Bicyclists traveling on sidewalk:
1.8 times greater risk than riding in a travel lane

ITE Journal, 1994



Wachtel Study Conclusions

2. Bicyclists traveling *against* traffic flow:
3.6 times greater risk than riding with traffic

ITE Journal, 1994



Paths

- Bike Paths or Shared use paths are desired by many users.
- When appropriate, paths provide comfortable facilities for bicyclists.
- However, in urban areas, paths usually must cross city streets.
- These intersections of roads and paths must be handled carefully.
- Paths adjacent to roads can be especially difficult to make user-friendly.





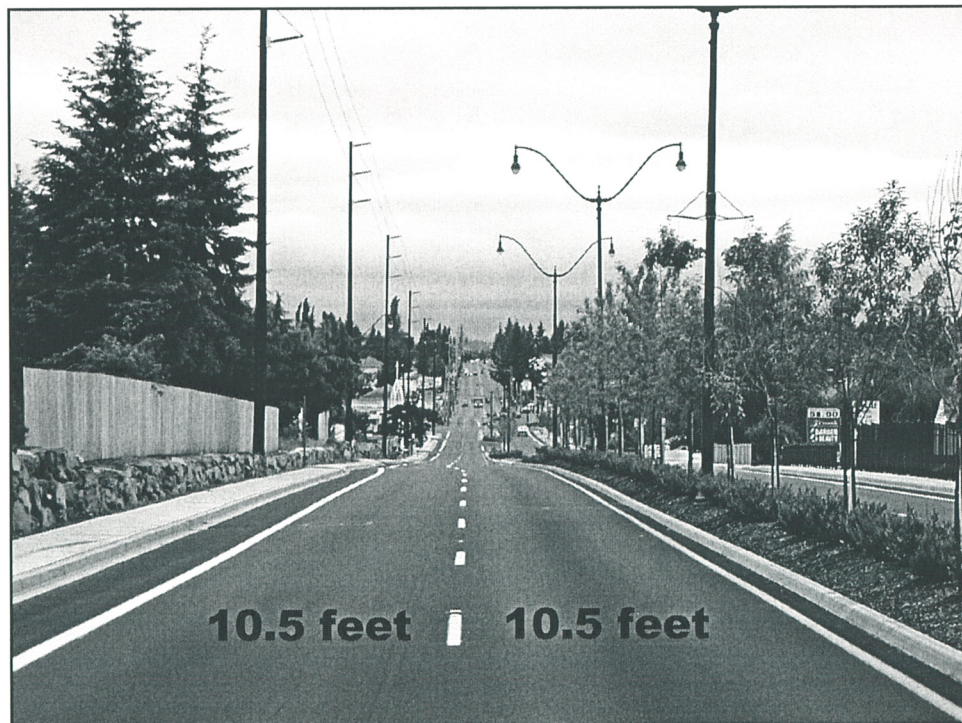


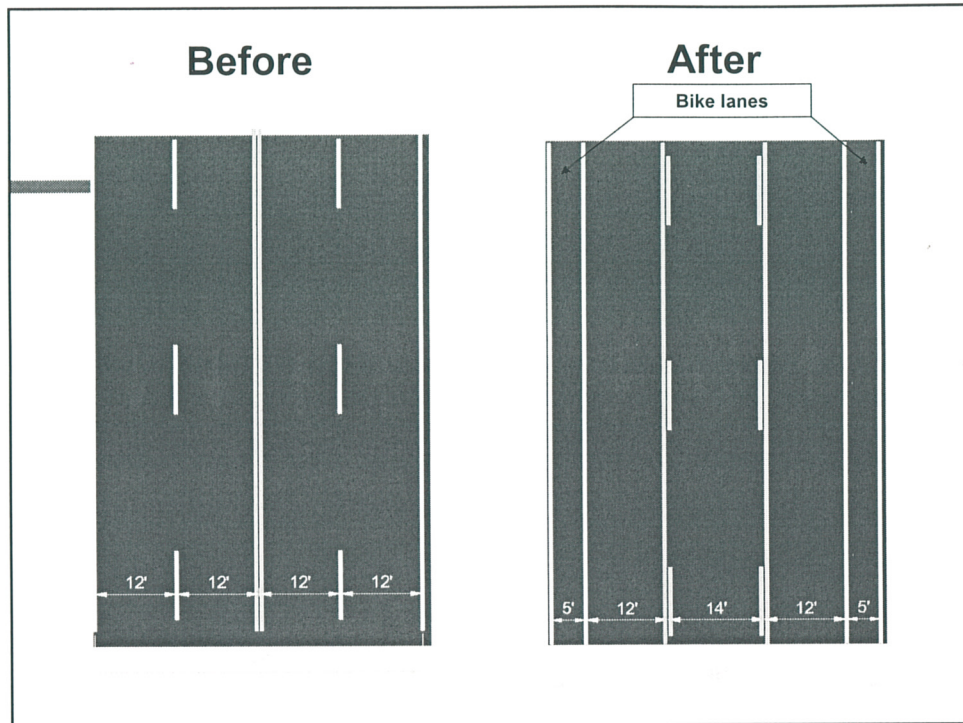
Where Paths Are Best

- Along rivers, oceans, or old railroad grades.
- Short paths to connect cul-de-sacs
- To bridge obstacles such as freeways or rivers.
- Where grade separation from major roadways can be achieved.

Road Restriping





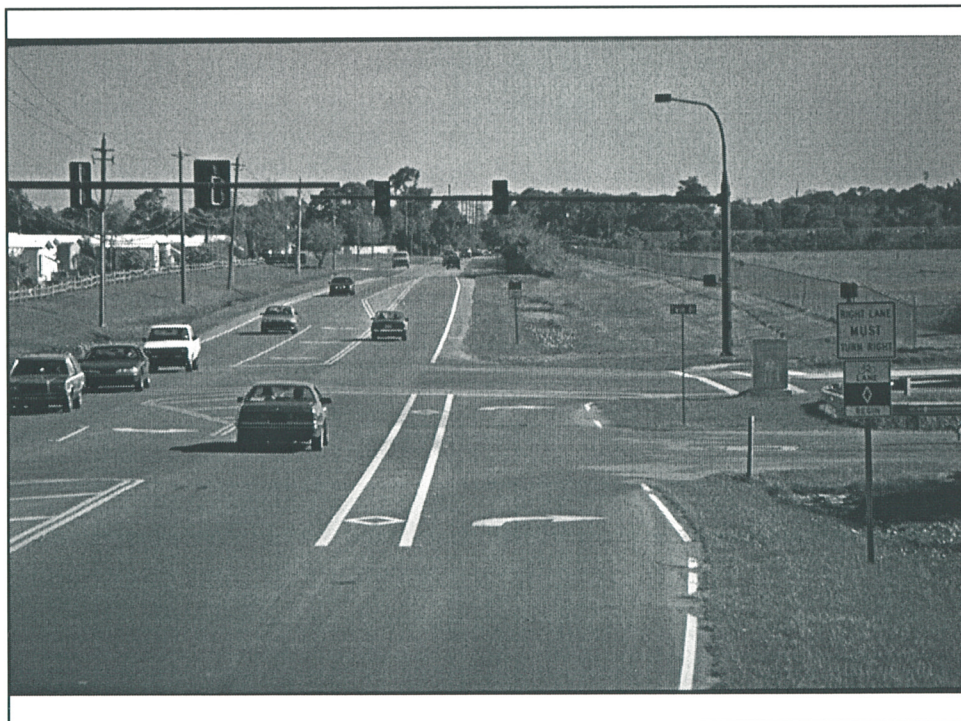


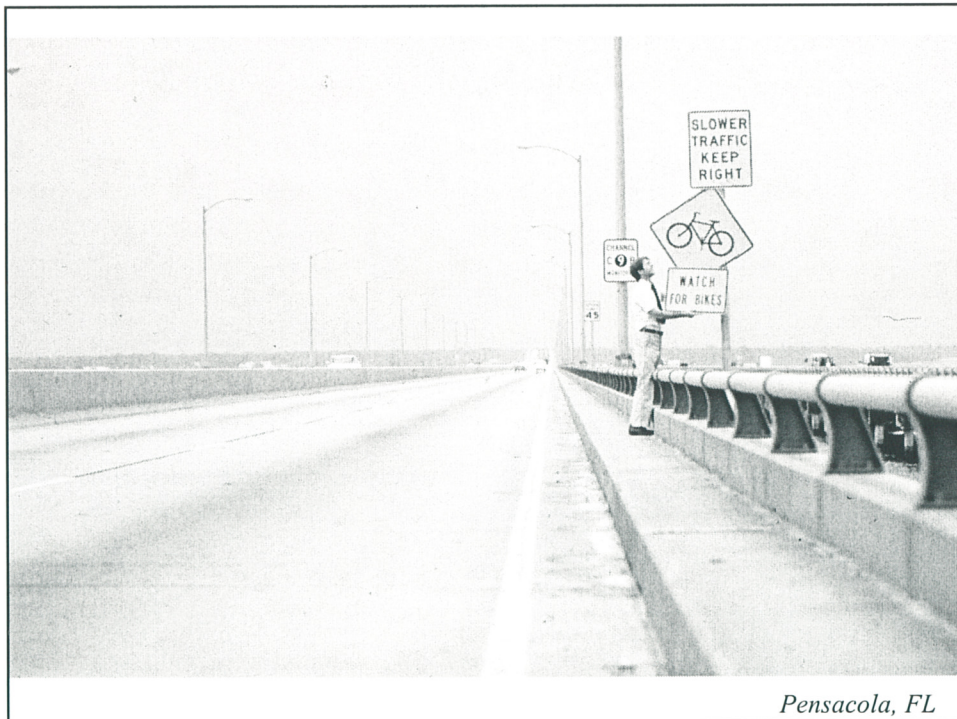


Honolulu, HI



Santa Barbara, CA





Pensacola, FL