

Ala Moana

Elevated Pedestrian Walkway

Welcome! Thank you for participating in our
Online **Question & Answer** Session

Information from the presentation
will be available after 10/15 at:



HIDOT.hawaii.gov/presentations

Email your questions to:



DOT.HWY-AlaMoanaPed@hawaii.gov

Comment Deadline: October 22, 2020



Agenda

Ground Rules

How to Participate / Using Zoom Tools

Project Team Introductions

Project Video

Frequently Asked Questions

Question & Answer



HIDOT.hawaii.gov/presentations



DOT.HWY-AlaMoanaPed@hawaii.gov

Ground Rules

- Meeting will be actively facilitated
- Participation is welcomed and encouraged
- Treat everyone with kindness and respect
- Actively listen
- Questions will be selected at random and we will do our best to reach everyone
- If you need technical assistance, please type in the chat box
- If you are experiencing technical issues, try leaving the meeting and rejoining



HIDOT.hawaii.gov/presentations



DOT.HWY-AlaMoanaPed@hawaii.gov

How to Participate

1. Raise your hand online
2. Raise your hand from your phone by dialing *9
3. Type a question in the chat box
4. Email DOT.HWY-AlaMoanaPed@hawaii.gov
5. Complete our voluntary Title VI data form:
<https://rebrand.ly/AlaMoanaForm>

If you have comment you would like to be recorded, you can insert that into the chat box or email it.



[HIDOT.hawaii.gov/presentations](https://hidot.hawaii.gov/presentations)



DOT.HWY-AlaMoanaPed@hawaii.gov



Ala Moana

Elevated Pedestrian Walkway



ALA MOANA BOULEVARD ELEVATED PEDESTRIAN WALKWAY

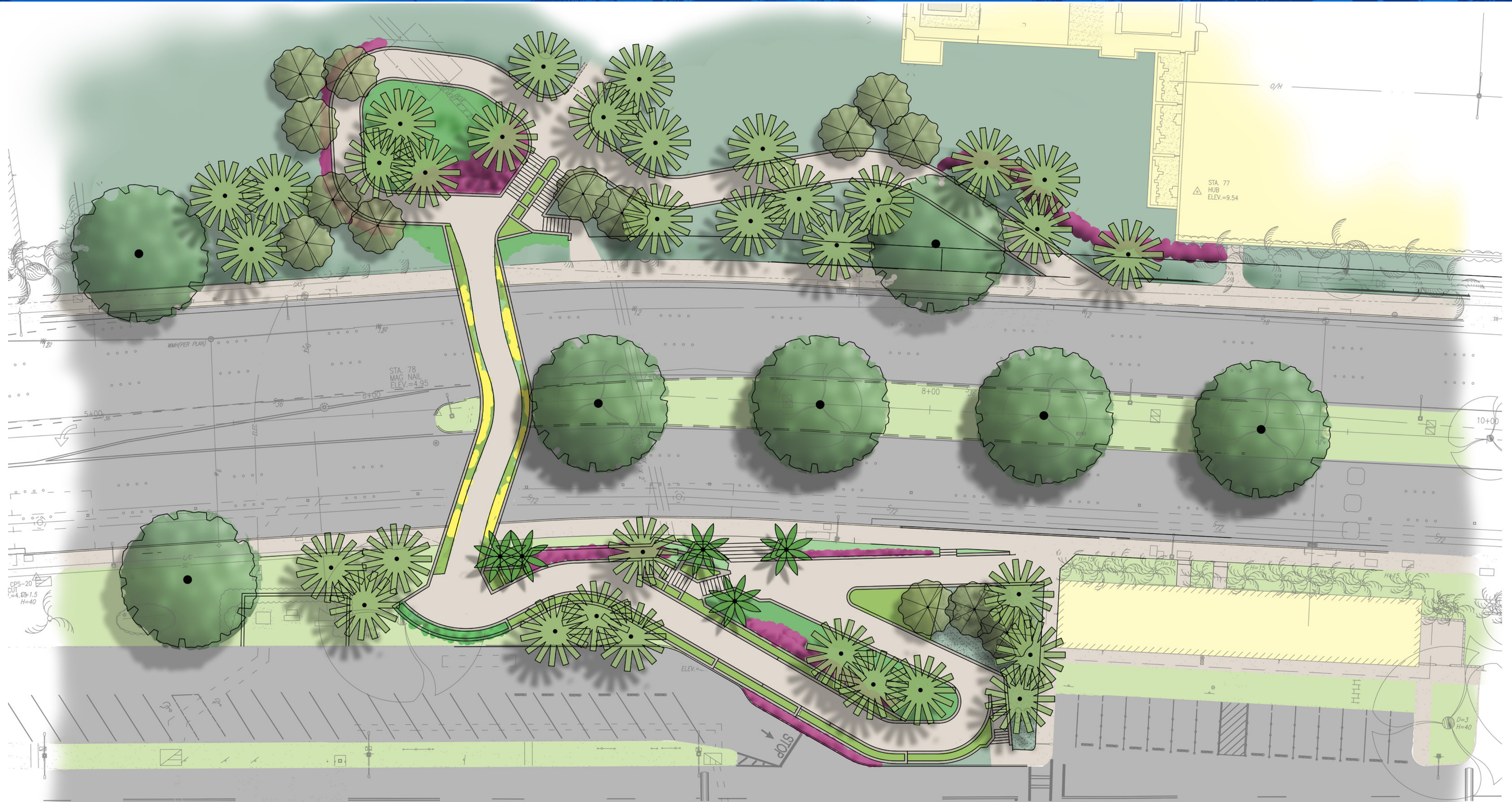
U.S. Department of Transportation
Federal Highway
Administration

Victoria Ward, Ltd



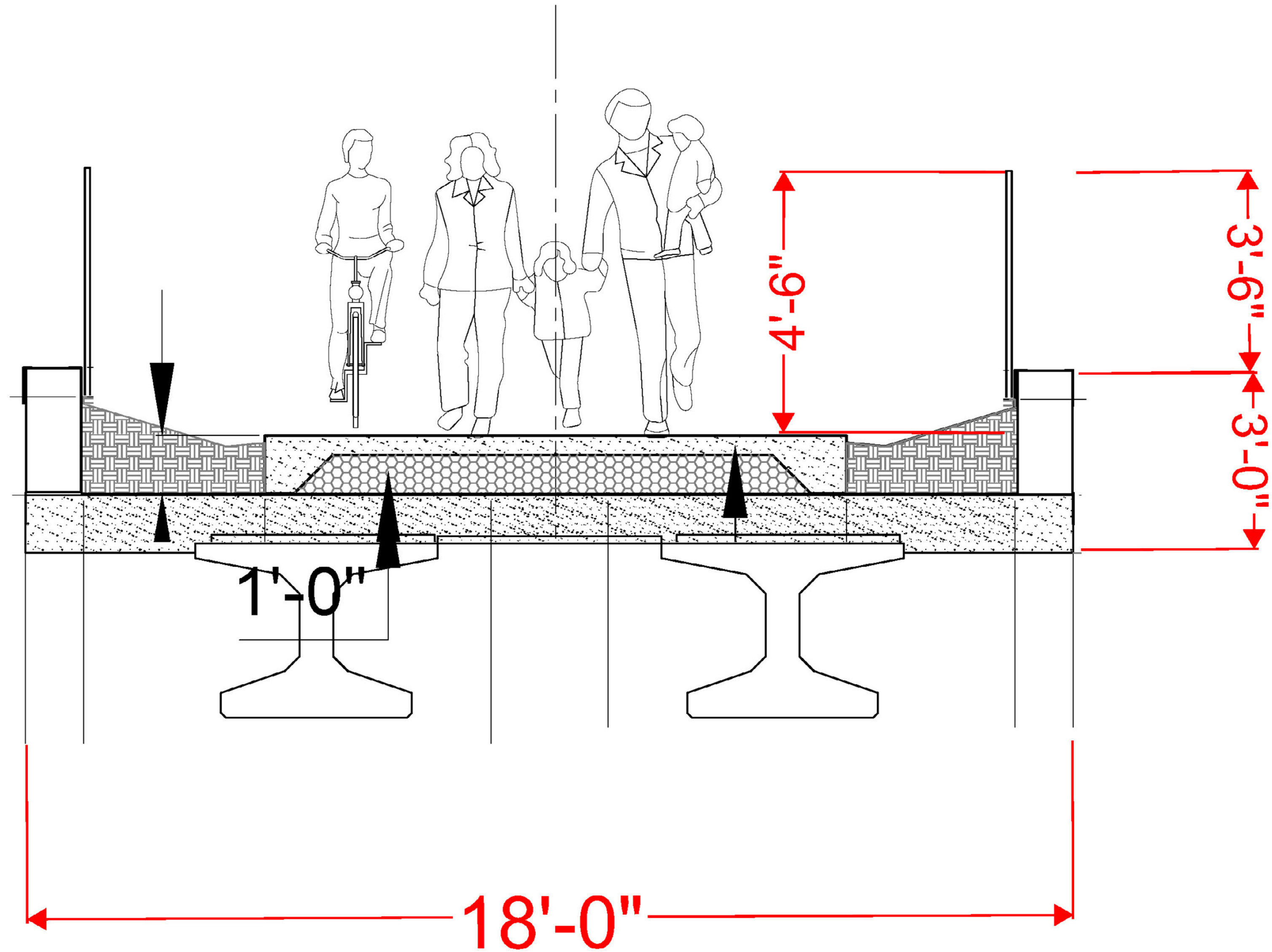
Ala Moana

Elevated Pedestrian Walkway



Ala Moana

Elevated Pedestrian Walkway



Ala Moana

Elevated Pedestrian Walkway



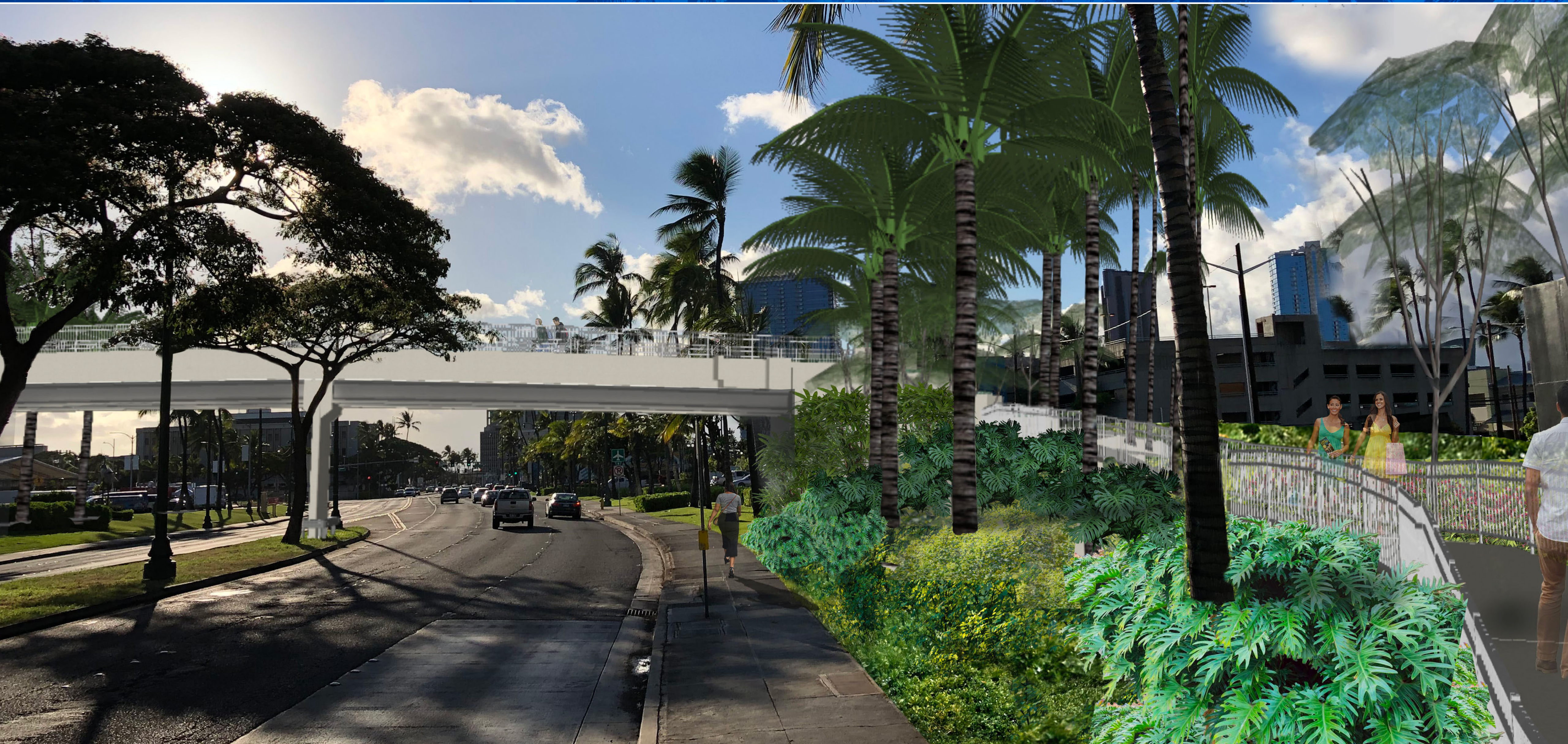
Ala Moana

Elevated Pedestrian Walkway



Ala Moana

Elevated Pedestrian Walkway



Ala Moana

Elevated Pedestrian Walkway

Welcome! Thank you for participating in our
Online **Question & Answer** Session

Information from the presentation
will be available after 10/15 at:



HIDOT.hawaii.gov/presentations

Email your questions to:



DOT.HWY-AlaMoanaPed@hawaii.gov

Comment Deadline: October 22, 2020

