

Portion of Māmalahoa Trail appx. 10-ft wide x 2500-ft, measured from Kealahou Parkway, for Trail Restoration

30-ft Buffer for Māmalahoa Trail

State Right of Way

NOTE:
 Origin of Azimuths: "Kailua (North Meridian)"
 Coordinates referred to: "Kailua (North Meridian)"
 "Kailua Azimuth" = "Hawaii Plane Coordinate"
 Grid System Zone 1" - 0° 10' 00"
 Denotes access permitted
 Denotes no vehicle access permitted
 Denotes no access permitted
 Denotes limited access as noted on plan

NO.	REVISION	APPROVED	DATE
2	Parcel 10 revised	G.C.	7/17/02
1	Parcels 1 (Rev. 1) and 8 acquired under Project No. 19AB-02-97. Project No. 19AB-02-97 changed to: P.A.P. No. NH-010-1(15) as per memo Hwy-AL 3-79313	G.C.	3/5/02

STATE OF HAWAII
 DEPARTMENT OF TRANSPORTATION
 HIGHWAYS DIVISION
RIGHT OF WAY MAP
QUEEN KAAHUMANU HIGHWAY WIDENING
KAILUA TO KEAHOLE
 P.A.P. PROJECT NO. 19AB-02-97-NH-010-1(15)
 AT KEAHOLO AND KEALAKEHE, NORTH KONA ISLAND OF HAWAII, HAWAII

HONOLULU, HAWAII MAY 13, 1998 SCALE: 1" = 100'

APPROVED: *James D. Con* CADASTRAL ENGINEER
 APPROVED: *Larry Segandi* FOR ADMINISTRATOR, HIGHWAYS DIVISION

SHEET NO. 5 OF 6 SHEETS

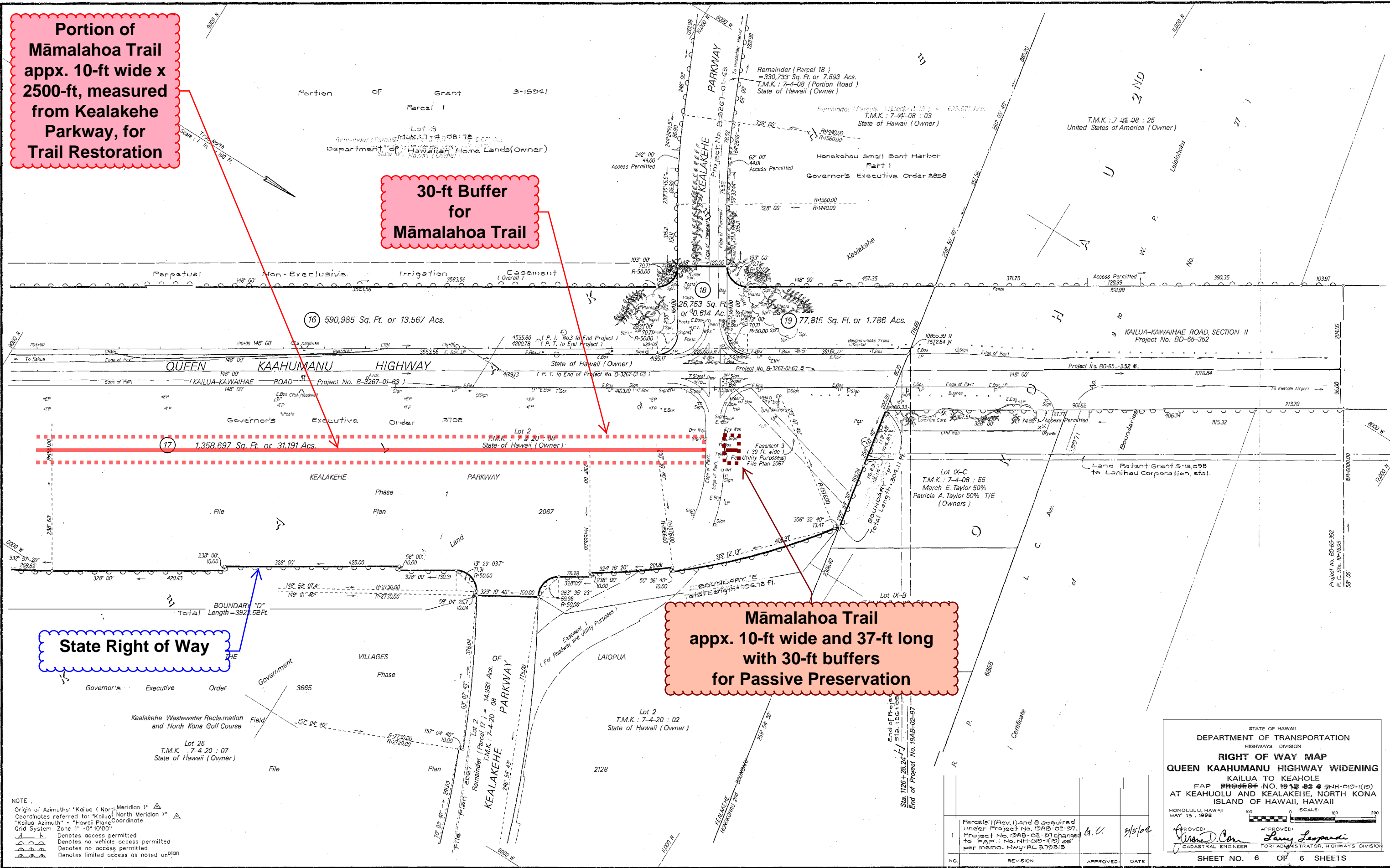
PROJ. ENGINEER: J. D. CON
 FIELD CHECK: J. L. O.
 COMPUTER: W.S. NO.
 PLOTTER: J. WONG, A. LOHIE, S. L. O.
 DTD BY: J. WONG

Portion of Māmalahoa Trail appx. 10-ft wide x 2500-ft, measured from Kealakehe Parkway, for Trail Restoration

30-ft Buffer for Māmalahoa Trail

Māmalahoa Trail appx. 10-ft wide and 37-ft long with 30-ft buffers for Passive Preservation

State Right of Way



PROJ. ENGINEER: T.O. FIELD BOOKS: 487, 487-A, 487-B, 487-C, 487-D, 487-E, 487-F, 487-G, 487-H, 487-I, 487-J, 487-K, 487-L, 487-M, 487-N, 487-O, 487-P, 487-Q, 487-R, 487-S, 487-T, 487-U, 487-V, 487-W, 487-X, 487-Y, 487-Z, 487-AA, 487-AB, 487-AC, 487-AD, 487-AE, 487-AF, 487-AG, 487-AH, 487-AI, 487-AJ, 487-AL, 487-AM, 487-AN, 487-AO, 487-AP, 487-AQ, 487-AR, 487-AS, 487-AT, 487-AU, 487-AV, 487-AW, 487-AX, 487-AY, 487-AZ, 487-BA, 487-BB, 487-BC, 487-BD, 487-BE, 487-BF, 487-BG, 487-BH, 487-BI, 487-BJ, 487-BL, 487-BM, 487-BN, 487-BO, 487-BP, 487-BQ, 487-BR, 487-BS, 487-BT, 487-BU, 487-BV, 487-BW, 487-BX, 487-BY, 487-BZ, 487-CA, 487-CB, 487-CC, 487-CD, 487-CE, 487-CF, 487-CG, 487-CH, 487-CI, 487-CJ, 487-CK, 487-CL, 487-CM, 487-CN, 487-CO, 487-CP, 487-CQ, 487-CR, 487-CS, 487-CT, 487-CU, 487-CV, 487-CW, 487-CX, 487-CY, 487-CZ, 487-DA, 487-DB, 487-DC, 487-DD, 487-DE, 487-DF, 487-DG, 487-DH, 487-DI, 487-DJ, 487-DK, 487-DM, 487-DN, 487-DO, 487-DP, 487-DQ, 487-DR, 487-DS, 487-DT, 487-DU, 487-DV, 487-DW, 487-DX, 487-DY, 487-DZ, 487-EA, 487-EB, 487-EC, 487-ED, 487-EE, 487-EF, 487-EG, 487-EH, 487-EI, 487-EJ, 487-EK, 487-EL, 487-EM, 487-EN, 487-EO, 487-EP, 487-EQ, 487-ER, 487-ES, 487-ET, 487-EU, 487-EV, 487-EW, 487-EX, 487-EY, 487-EZ, 487-FA, 487-FB, 487-FC, 487-FD, 487-FE, 487-FG, 487-FH, 487-FI, 487-FJ, 487-FK, 487-FL, 487-FM, 487-FN, 487-FO, 487-FP, 487-FQ, 487-FR, 487-FS, 487-FT, 487-FU, 487-FV, 487-FW, 487-FX, 487-FY, 487-FZ, 487-GA, 487-GB, 487-GC, 487-GD, 487-GE, 487-GF, 487-GG, 487-GH, 487-GI, 487-GJ, 487-GK, 487-GL, 487-GM, 487-GN, 487-GO, 487-GP, 487-GQ, 487-GR, 487-GS, 487-GT, 487-GU, 487-GV, 487-GW, 487-GX, 487-GY, 487-GZ, 487-HA, 487-HB, 487-HC, 487-HD, 487-HE, 487-HF, 487-HG, 487-HH, 487-HI, 487-HJ, 487-HK, 487-HL, 487-HM, 487-HN, 487-HO, 487-HP, 487-HQ, 487-HR, 487-HS, 487-HT, 487-HU, 487-HV, 487-HW, 487-HX, 487-HY, 487-HZ, 487-IA, 487-IB, 487-IC, 487-ID, 487-IE, 487-IF, 487-IG, 487-IH, 487-II, 487-IJ, 487-IK, 487-IL, 487-IM, 487-IN, 487-IO, 487-IP, 487-IQ, 487-IR, 487-IS, 487-IT, 487-IU, 487-IV, 487-IW, 487-IX, 487-IY, 487-IZ, 487-JA, 487-JB, 487-JC, 487-JD, 487-JE, 487-JF, 487-JG, 487-JH, 487-JI, 487-JJ, 487-JK, 487-JL, 487-JM, 487-JN, 487-JO, 487-JP, 487-JQ, 487-JR, 487-JS, 487-JT, 487-JU, 487-JV, 487-JW, 487-JX, 487-JY, 487-JZ, 487-KA, 487-KB, 487-KC, 487-KD, 487-KE, 487-KF, 487-KG, 487-KH, 487-KI, 487-KJ, 487-KK, 487-KL, 487-KM, 487-KN, 487-KO, 487-KP, 487-KQ, 487-KR, 487-KS, 487-KT, 487-KU, 487-KV, 487-KW, 487-KX, 487-KY, 487-KZ, 487-LA, 487-LB, 487-LC, 487-LD, 487-LE, 487-LF, 487-LG, 487-LH, 487-LI, 487-LJ, 487-LK, 487-LL, 487-LM, 487-LN, 487-LO, 487-LP, 487-LQ, 487-LR, 487-LS, 487-LT, 487-LU, 487-LV, 487-LW, 487-LX, 487-LY, 487-LZ, 487-MA, 487-MB, 487-MC, 487-MD, 487-ME, 487-MF, 487-MG, 487-MH, 487-MI, 487-MJ, 487-MK, 487-ML, 487-MM, 487-MN, 487-MO, 487-MP, 487-MQ, 487-MR, 487-MS, 487-MT, 487-MU, 487-MV, 487-MW, 487-MX, 487-MY, 487-MZ, 487-NA, 487-NB, 487-NC, 487-ND, 487-NE, 487-NF, 487-NG, 487-NH, 487-NI, 487-NJ, 487-NK, 487-NL, 487-NM, 487-NN, 487-NO, 487-NP, 487-NQ, 487-NR, 487-NS, 487-NT, 487-NU, 487-NV, 487-NW, 487-NX, 487-NY, 487-NZ, 487-OA, 487-OB, 487-OC, 487-OD, 487-OE, 487-OF, 487-OG, 487-OH, 487-OI, 487-OJ, 487-OK, 487-OL, 487-OM, 487-ON, 487-OO, 487-OP, 487-OQ, 487-OR, 487-OS, 487-OT, 487-OU, 487-OV, 487-OW, 487-OX, 487-OY, 487-OZ, 487-PA, 487-PB, 487-PC, 487-PD, 487-PE, 487-PF, 487-PG, 487-PH, 487-PI, 487-PJ, 487-PK, 487-PL, 487-PM, 487-PN, 487-PO, 487-PP, 487-PQ, 487-PR, 487-PS, 487-PT, 487-PU, 487-PV, 487-PW, 487-PX, 487-PY, 487-PZ, 487-QA, 487-QB, 487-QC, 487-QD, 487-QE, 487-QF, 487-QG, 487-QH, 487-QI, 487-QJ, 487-QK, 487-QL, 487-QM, 487-QN, 487-QO, 487-QP, 487-QL, 487-QM, 487-QN, 487-QO, 487-QP, 487-QR, 487-QS, 487-QT, 487-QU, 487-QV, 487-QW, 487-QX, 487-QY, 487-QZ, 487-RA, 487-RB, 487-RC, 487-RD, 487-RE, 487-RF, 487-RG, 487-RH, 487-RI, 487-RJ, 487-RK, 487-RL, 487-RM, 487-RN, 487-RO, 487-RP, 487-RQ, 487-RR, 487-RS, 487-RT, 487-RU, 487-RV, 487-RW, 487-RX, 487-RY, 487-RZ, 487-SA, 487-SB, 487-SC, 487-SD, 487-SE, 487-SF, 487-SG, 487-SH, 487-SI, 487-SJ, 487-SK, 487-SL, 487-SM, 487-SN, 487-SO, 487-SP, 487-SQ, 487-SR, 487-SS, 487-ST, 487-SU, 487-SV, 487-SW, 487-SX, 487-SY, 487-SZ, 487-TA, 487-TB, 487-TC, 487-TD, 487-TE, 487-TF, 487-TG, 487-TH, 487-TI, 487-TJ, 487-TK, 487-TL, 487-TM, 487-TN, 487-TO, 487-TP, 487-TQ, 487-TR, 487-TS, 487-TU, 487-TV, 487-TW, 487-TX, 487-TY, 487-TZ, 487-UA, 487-UB, 487-UC, 487-UD, 487-UE, 487-UF, 487-UG, 487-UH, 487-UI, 487-UJ, 487-UK, 487-UL, 487-UM, 487-UN, 487-UO, 487-UP, 487-UQ, 487-UR, 487-US, 487-UT, 487-UY, 487-UZ, 487-VA, 487-VB, 487-VC, 487-VD, 487-VE, 487-VF, 487-VG, 487-VH, 487-VI, 487-VJ, 487-VK, 487-VL, 487-VM, 487-VN, 487-VO, 487-VP, 487-VQ, 487-VR, 487-VS, 487-VT, 487-VU, 487-VV, 487-VW, 487-VX, 487-VY, 487-VZ, 487-WA, 487-WB, 487-WC, 487-WD, 487-WE, 487-WF, 487-WG, 487-WH, 487-WI, 487-WJ, 487-WK, 487-WL, 487-WM, 487-WN, 487-WO, 487-WP, 487-WQ, 487-WR, 487-WS, 487-WT, 487-WU, 487-WV, 487-WW, 487-WX, 487-WY, 487-WZ, 487-XA, 487-XB, 487-XC, 487-XD, 487-XE, 487-XF, 487-XG, 487-XH, 487-XI, 487-XJ, 487-XK, 487-XL, 487-XM, 487-XN, 487-XO, 487-XP, 487-XQ, 487-XR, 487-XS, 487-XT, 487-XU, 487-XV, 487-XW, 487-XX, 487-XY, 487-XZ, 487-YA, 487-YB, 487-YC, 487-YD, 487-YE, 487-YF, 487-YG, 487-YH, 487-YI, 487-YJ, 487-YK, 487-YL, 487-YM, 487-YN, 487-YO, 487-YP, 487-YQ, 487-YR, 487-YS, 487-YT, 487-YU, 487-YV, 487-YW, 487-YY, 487-YZ, 487-ZA, 487-ZB, 487-ZC, 487-ZD, 487-ZE, 487-ZF, 487-ZG, 487-ZH, 487-ZI, 487-ZJ, 487-ZK, 487-ZL, 487-ZM, 487-ZN, 487-ZO, 487-ZP, 487-ZQ, 487-ZR, 487-ZS, 487-ZT, 487-ZU, 487-ZV, 487-ZW, 487-ZX, 487-ZY, 487-ZZ

NOTE:
 Origin of Azimuths: "Kailua (North Meridian)" Δ
 Coordinates referred to: "Kailua (North Meridian)" Δ
 "Kailua Azimuth" - "Hawaii Plane Coordinate Grid System Zone 1" - "0° 10' 00"

Denotes access permitted
 Denotes no vehicle access permitted
 Denotes no access permitted
 Denotes limited access as noted on plan

NO.	REVISION	APPROVED	DATE
1	Parcels 1 (Rev. 1) and 3 acquired under Project No. 19AB-02-97. Project No. 19AB-02-97 changed to FAP No. NH-019-1(10) as per memo. Hwy-PL 5793B.	G.U.	3/15/08

STATE OF HAWAII
 DEPARTMENT OF TRANSPORTATION
 HIGHWAYS DIVISION
RIGHT OF WAY MAP
QUEEN KAAHUMANU HIGHWAY WIDENING
 KAILUA TO KEAHOLE
 PROJECT NO. 19AB-02-97
 AT KEAHOLO AND KEALAKEHE, NORTH KONA ISLAND OF HAWAII, HAWAII

HONOLULU, HAWAII MAY 13, 1998

SCALE: 1" = 100'

APPROVED: *Wm. D. Con* CADASTRAL ENGINEER
 APPROVED: *Larry Leopardi* PORT ADMINISTRATOR, HIGHWAYS DIVISION

SHEET NO. 6 OF 6 SHEETS