

Legend

- Original PA
- Addition to Original PA/APE
- Revised APE
- Ala Kahakai NHT Corridor

Note: The APE includes the Project Area (HRS 6E-8).

Scale

1
0 300 600 Meters
0 1,000 2,000 Feet



13/02/2020

Revised APE



Legend

- Original PA
- Addition to Original PA/APE
- Revised APE
- Ala Kahakai NHT Corridor

Note: The APE includes the Project Area (HRS 6E-8).

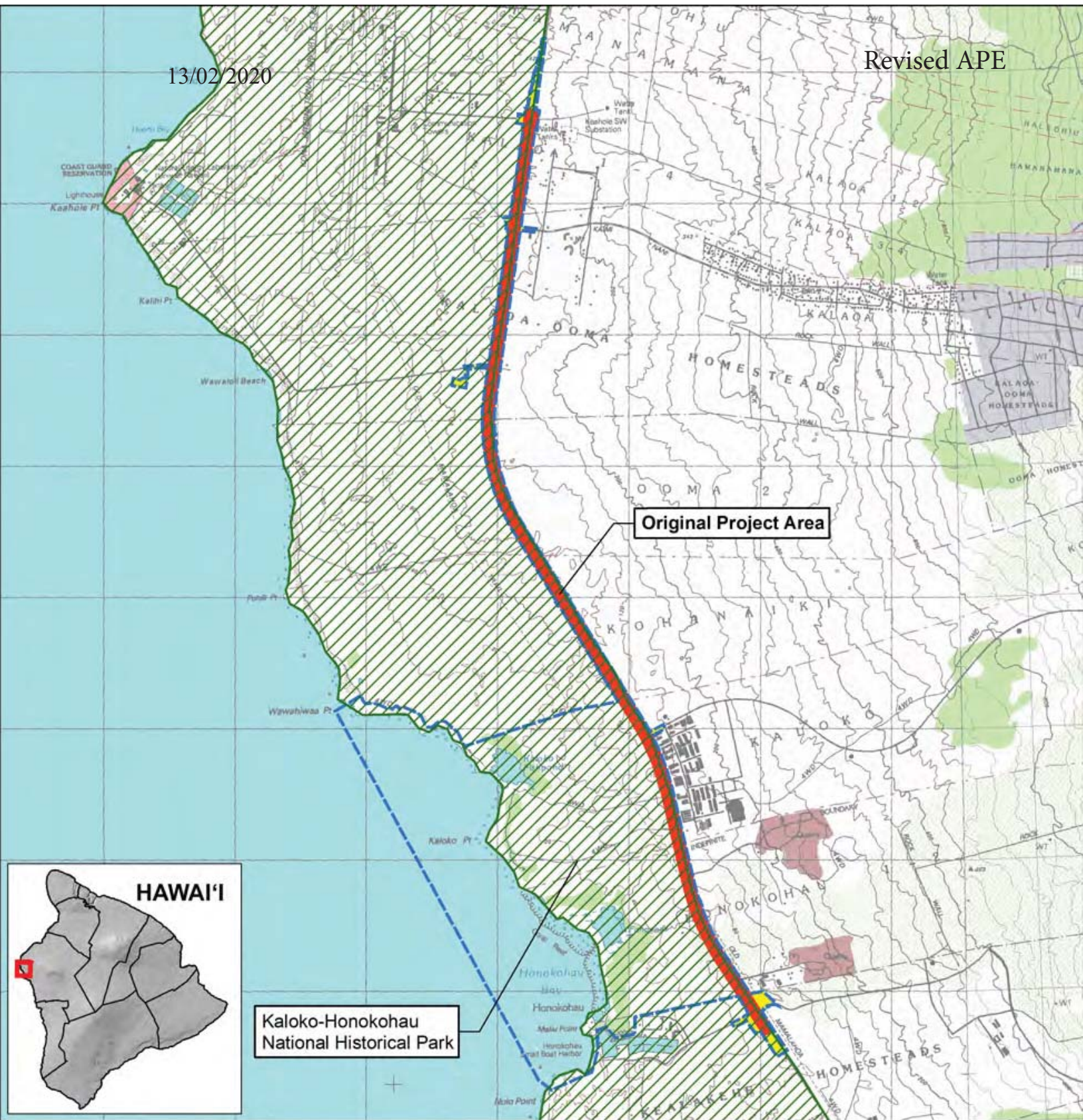
Scale

0 300 600 Meters
0 1,000 2,000 Feet



13/02/2020

Revised APE



Legend

- Original PA
- Addition to Original PA/APE
- Area of Potential Effect (APE)
- Ala Kahakai NHT Corridor

Note: The APE includes the Project Area (HRS 6E-8).

Scale

0 500 1,000 Meters
0 1,500 3,000 Feet



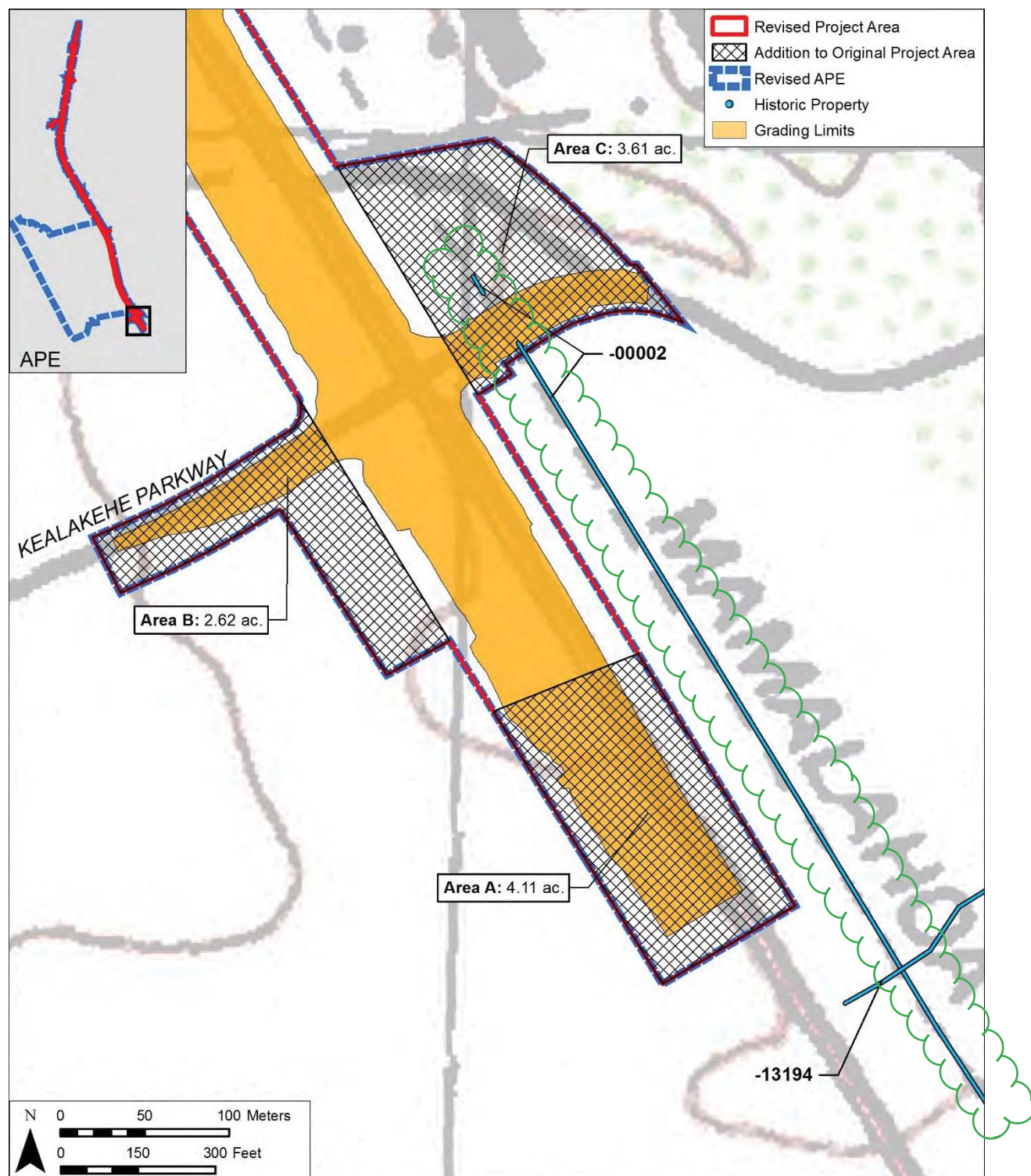


Figure 8. Portion of the 1996 Keahole Point USGS 7.5-minute topographic quadrangle showing Areas A, B, and C relative to project grading limits, documented historic properties, and revised PA and APE boundaries

Note: The APE includes the Project Area (HRS 6E-8).

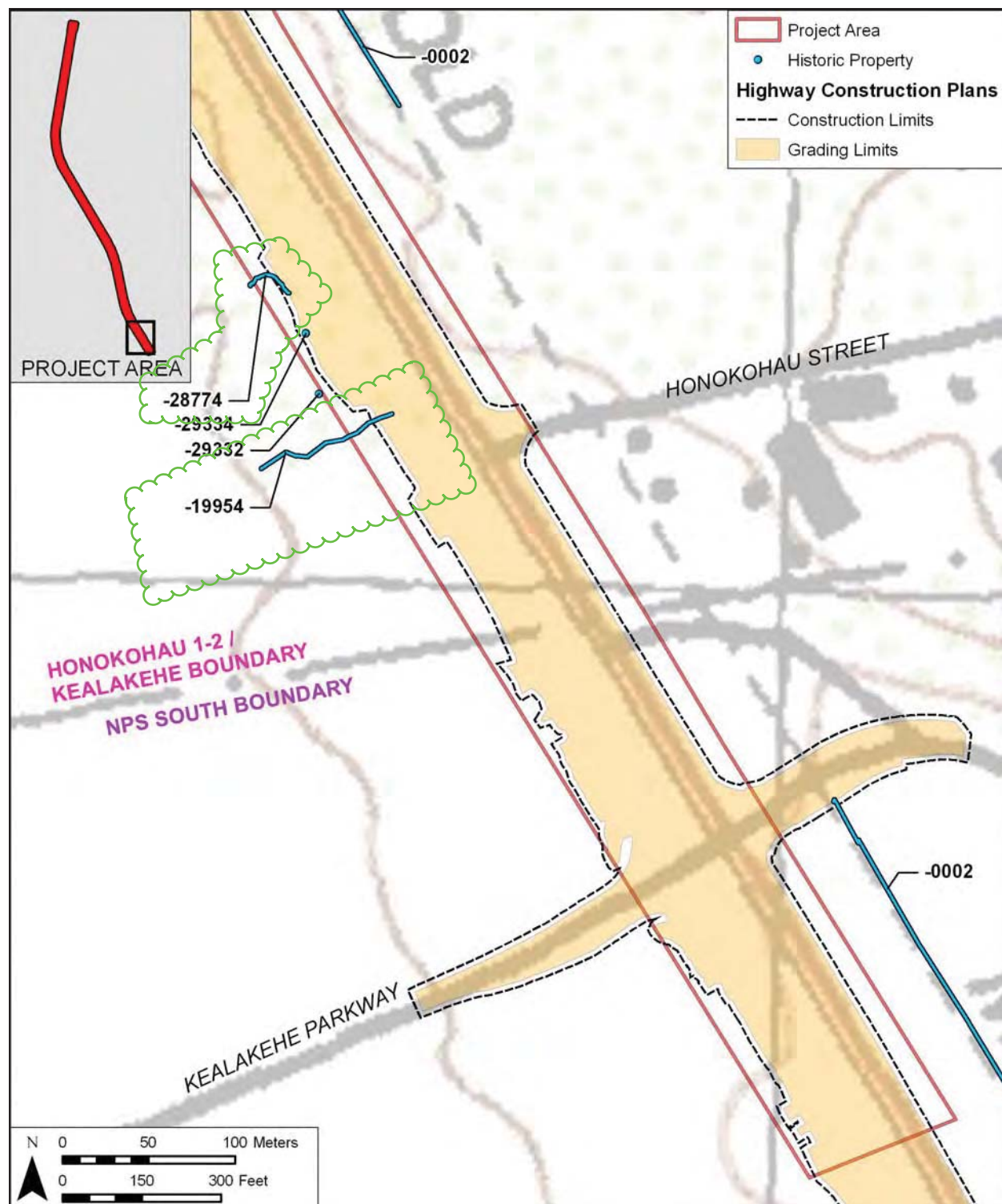


Figure 17. Portion of the 1996 U.S. Geological Survey 7.5 minute topographic map (Keāhole Point Quadrangle) showing Section 1 of the project area

This diagram is from the original APE maps.

Note: The APE includes the Project Area (HRS 6E-8).

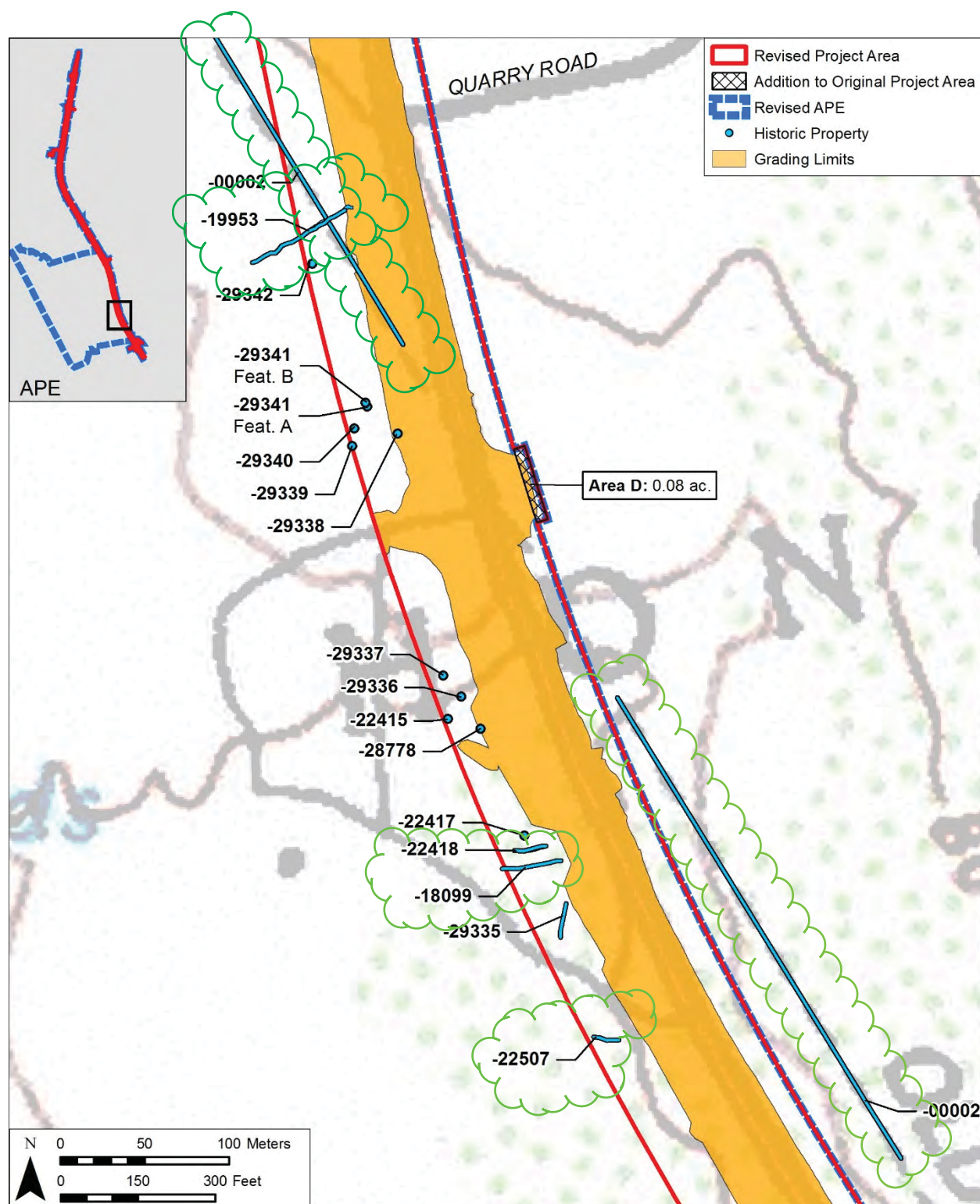


Figure 25. Portion of 1996 Keahole Point USGS 7.5-minute topographic quadrangle showing Area D relative to project grading limits, documented historic properties, and revised PA and APE boundaries

Note: The APE includes the Project Area (HRS 6E-8).

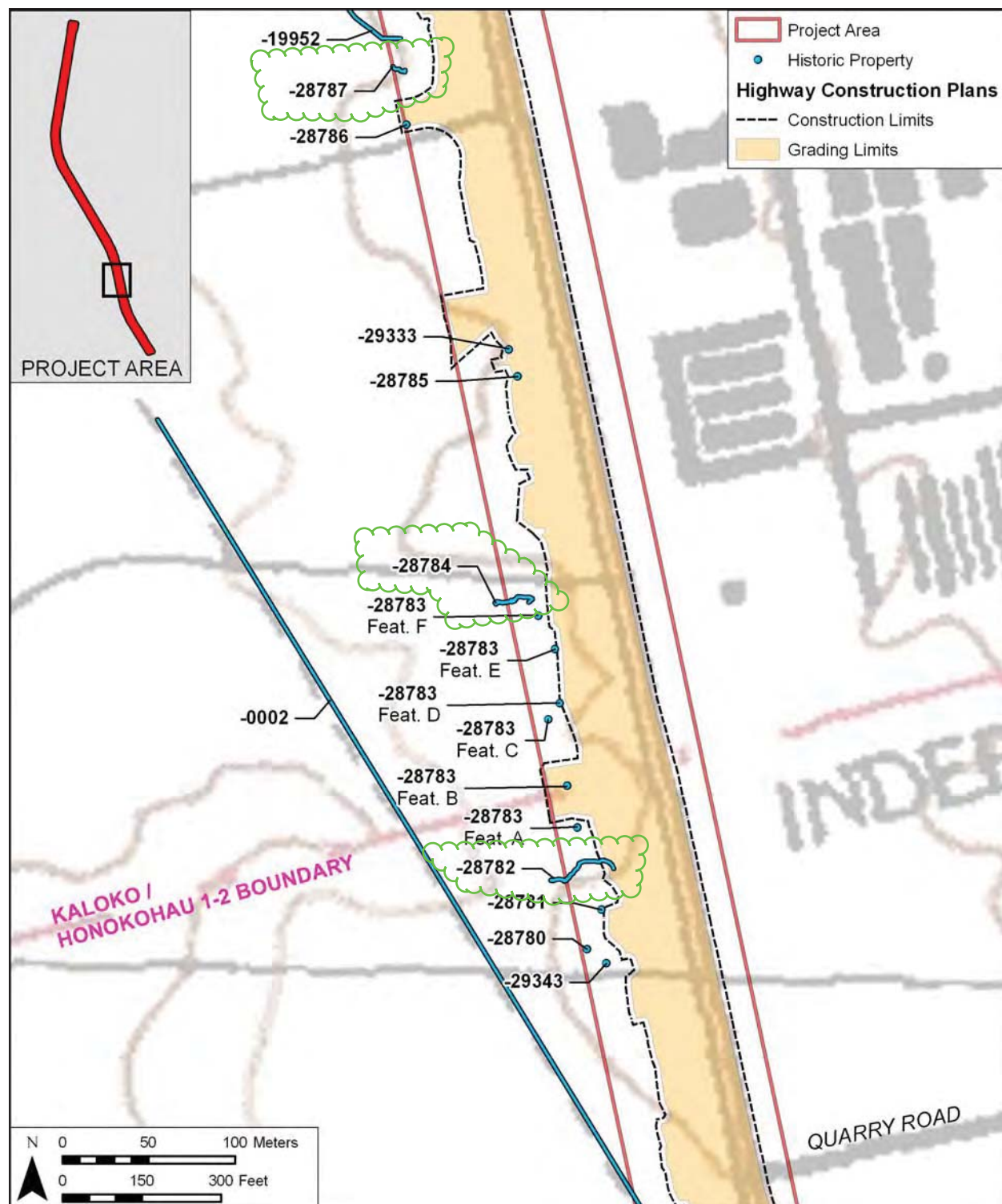


Figure 19. Portion of 1996 U.S. Geological Survey 7.5 minute topographic map (Keāhole Point Quadrangle) showing Section 3 of the project area

This diagram is from the original APE maps.

Note: The APE includes the Project Area (HRS 6E-8).

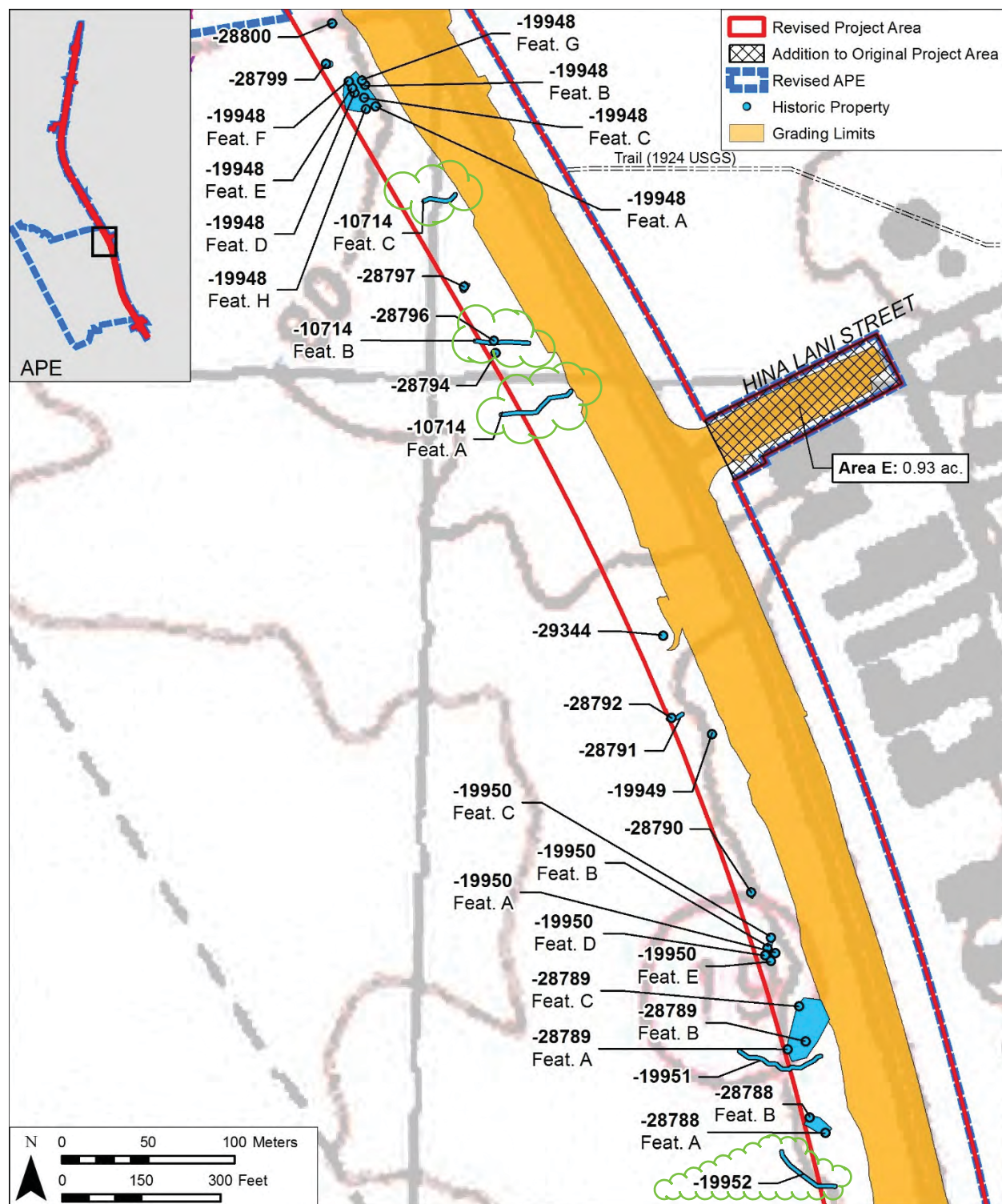


Figure 27. Portion of the 1996 Keahole Point USGS 7.5-minute topographic quadrangle showing Area E relative to project grading limits, documented historic properties, and revised PA and APE boundaries

Note: The APE includes the Project Area (HRS 6E-8).

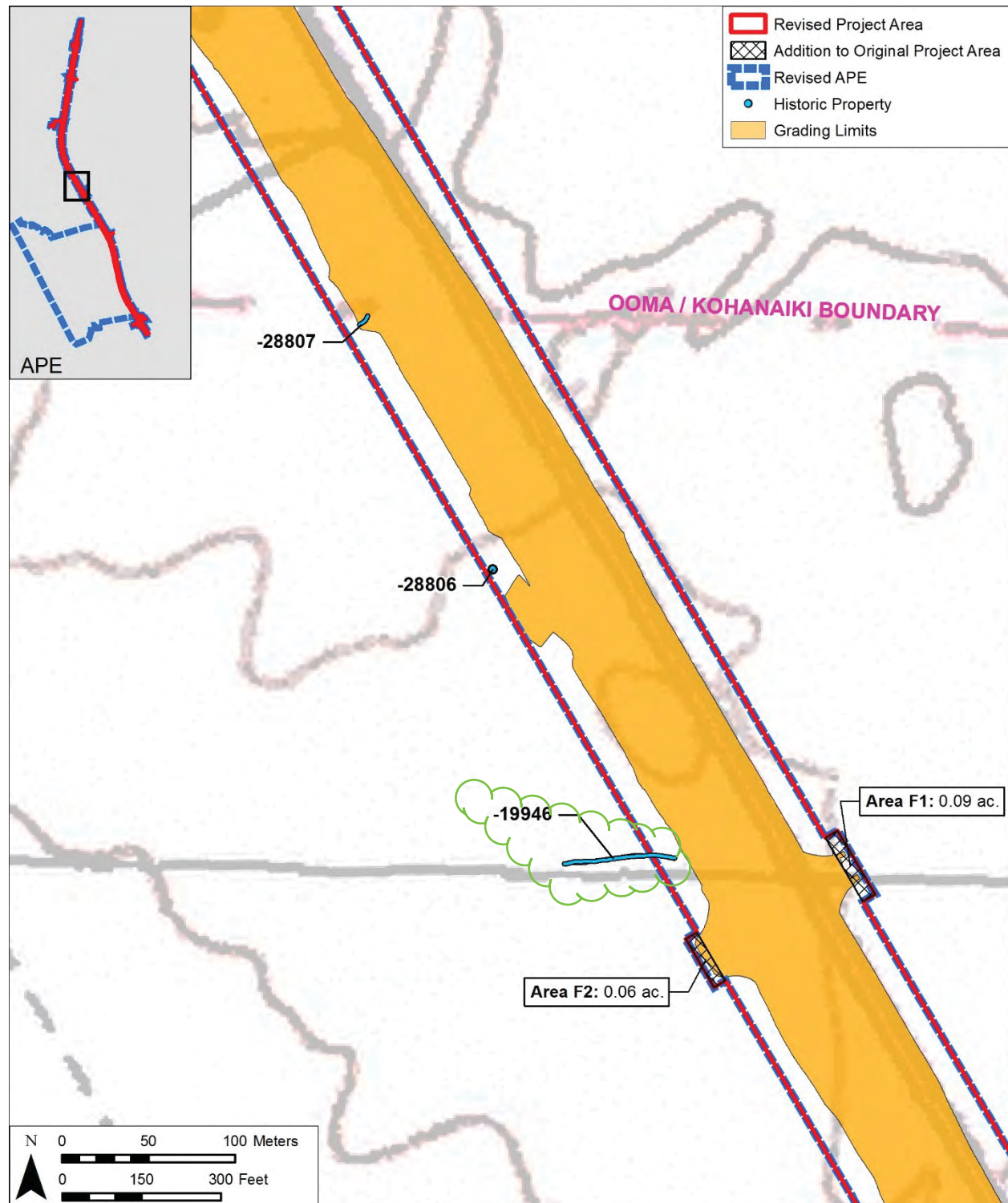


Figure 29. Portion of the 1996 Keahole Point USGS 7.5-minute topographic quadrangle showing Areas F1 and Area F2 relative to project grading limits, documented historic properties, and revised PA and APE boundaries

Note: The APE includes the Project Area (HRS 6E-8).

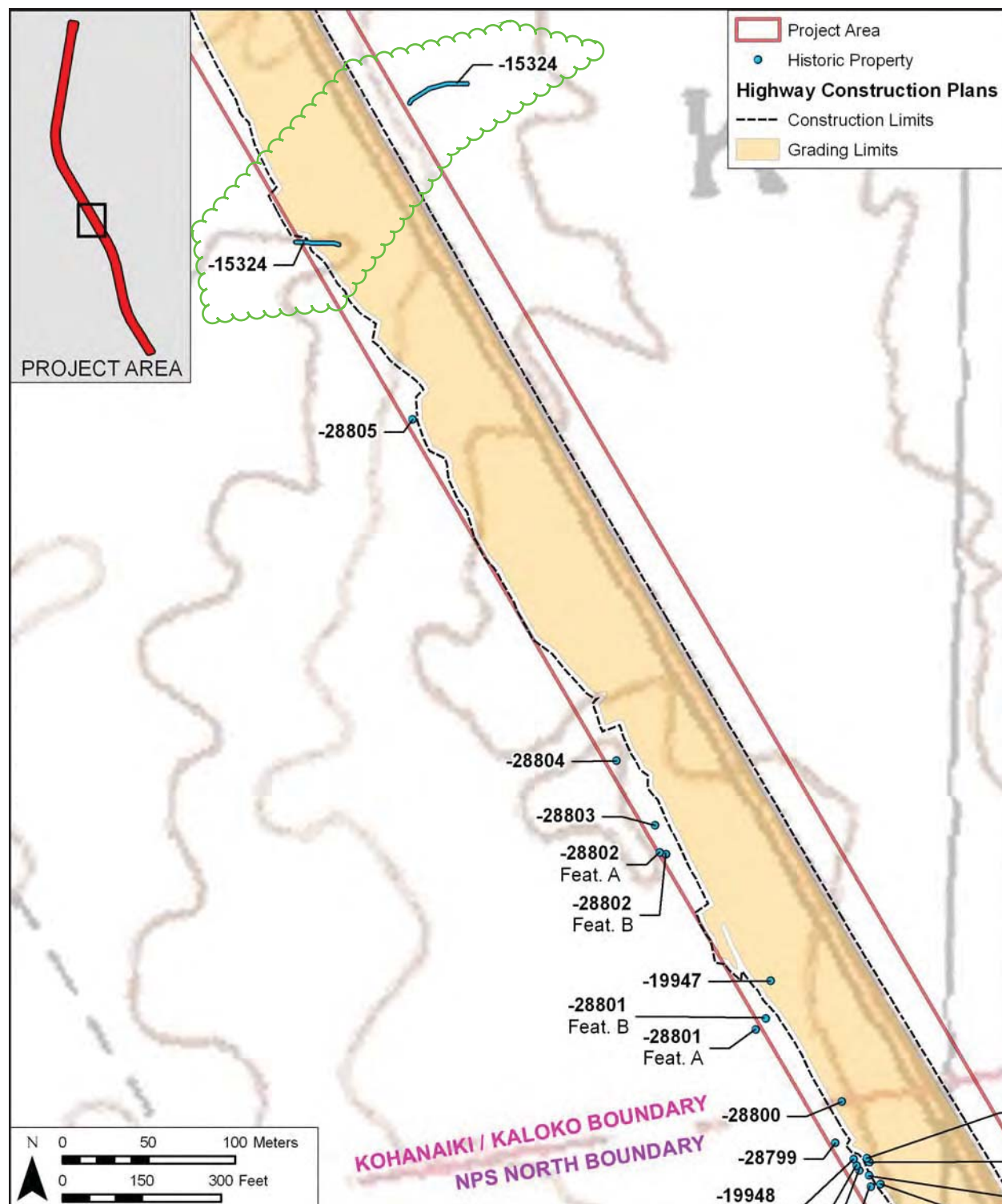


Figure 21. Portion of 1996 U.S. Geological Survey 7.5 minute topographic map (Keāhole Point Quadrangle) showing Section 5 of the project area

This diagram is from the original APE maps.

Note: The APE includes the Project Area (HRS 6E-8).

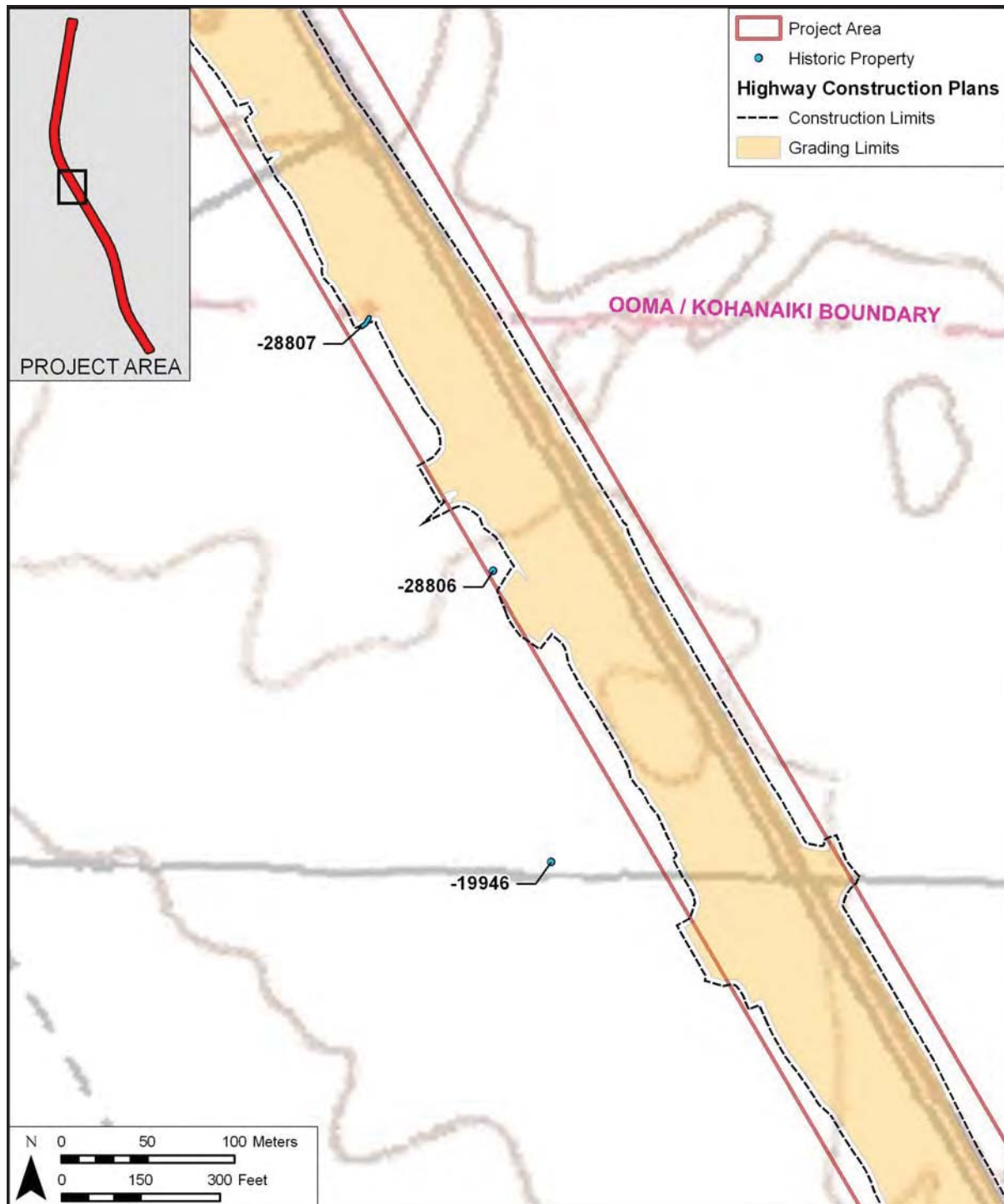


Figure 22. Portion of the 1996 U.S. Geological Survey 7.5 minute topographic map (Keāhole Point Quadrangle) showing Section 6 of the project area [Note: The location of SIHP # -19946 is here shown outside the project area due to a lack of precise coordinates for the portions of SIHP # -19946 within the project area; however, the trail runs *mauka-makai* and extends into the project area 18-20 m.]

This diagram is from the original APE maps.

Note: The APE includes the Project Area (HRS 6E-8).

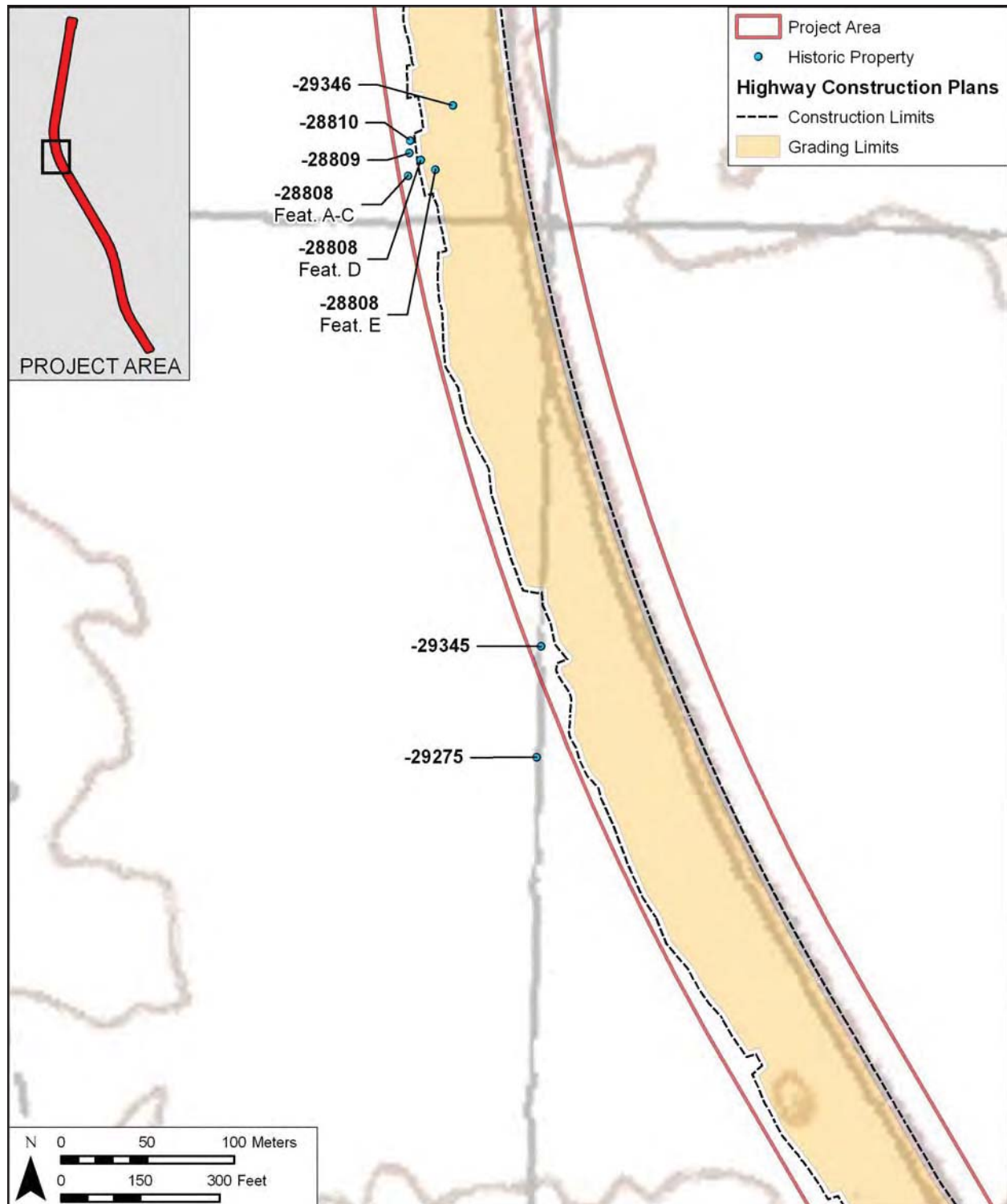


Figure 23. Portion of the 1996 U.S. Geological Survey 7.5 minute topographic map (Keāhole Point Quadrangle) showing Section 7 of the project area

This diagram is from the original APE maps.

Note: The APE includes the Project Area (HRS 6E-8).

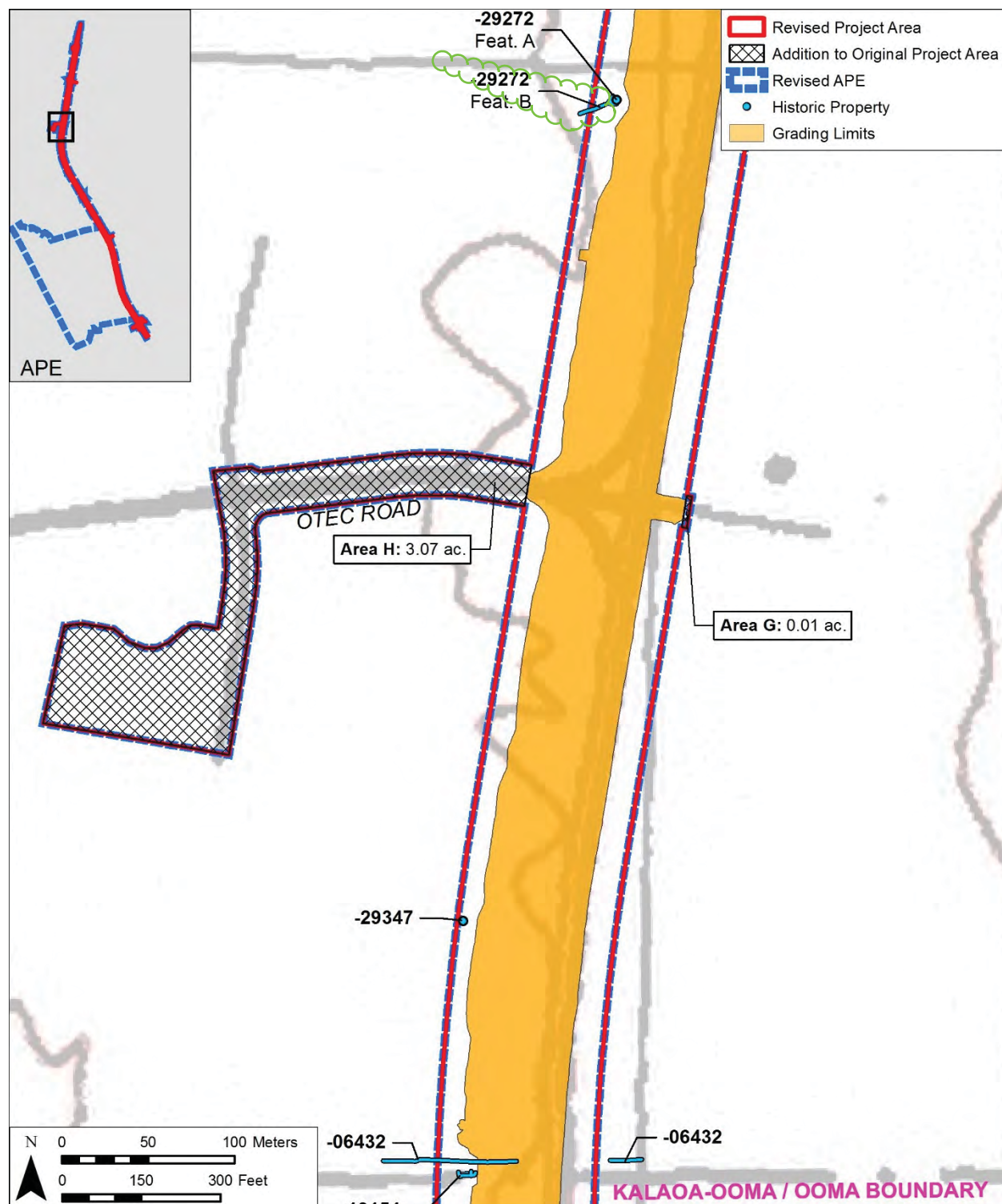


Figure 32. Portion of the 1996 Keahole Point USGS 7.5-minute topographic quadrangle showing Area G and Area H relative to project grading limits, documented historic properties, and revised PA and APE boundaries

Note: The APE includes the Project Area (HRS 6E-8).

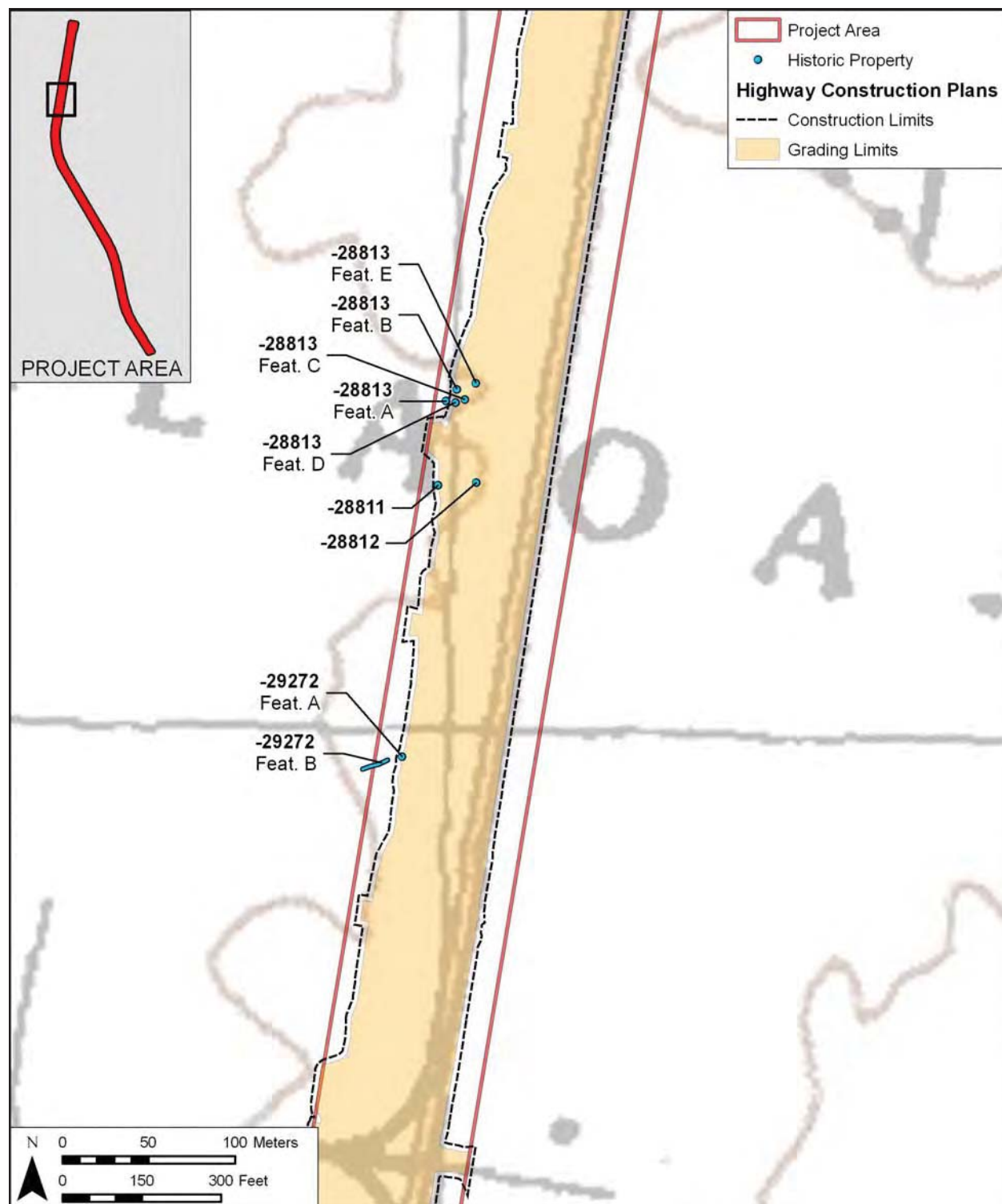


Figure 25. Portion of the 1996 U.S. Geological Survey 7.5 minute topographic map (Keāhole Point Quadrangle) showing Section 9 of the project area

This diagram is from the original APE maps.

Note: The APE includes the Project Area (HRS 6E-8).

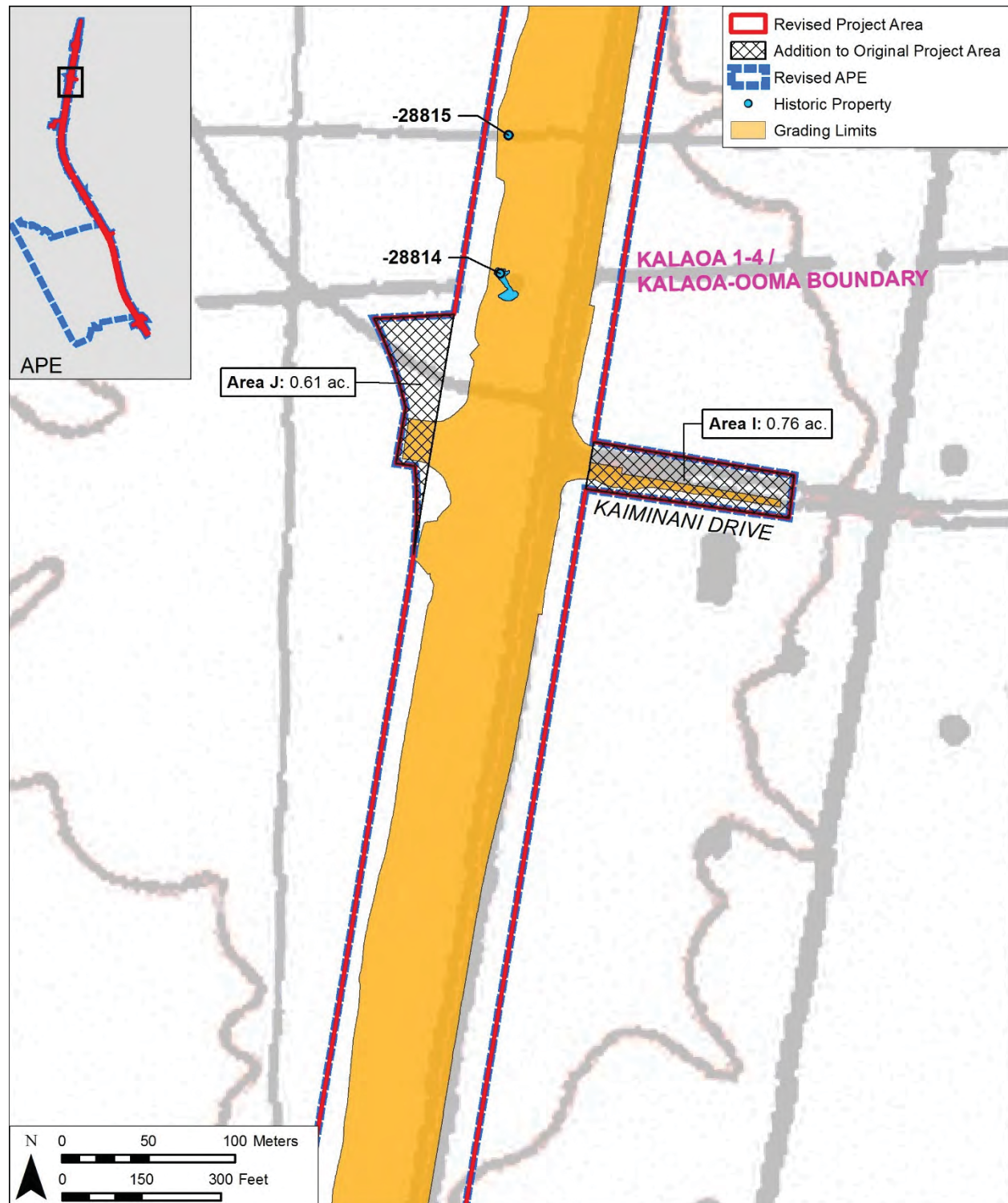


Figure 36. Portion of the 1996 Keahole Point USGS 7.5-minute topographic quadrangle showing Area I and Area J relative to project grading limits, documented historic properties, and revised PA and APE boundaries

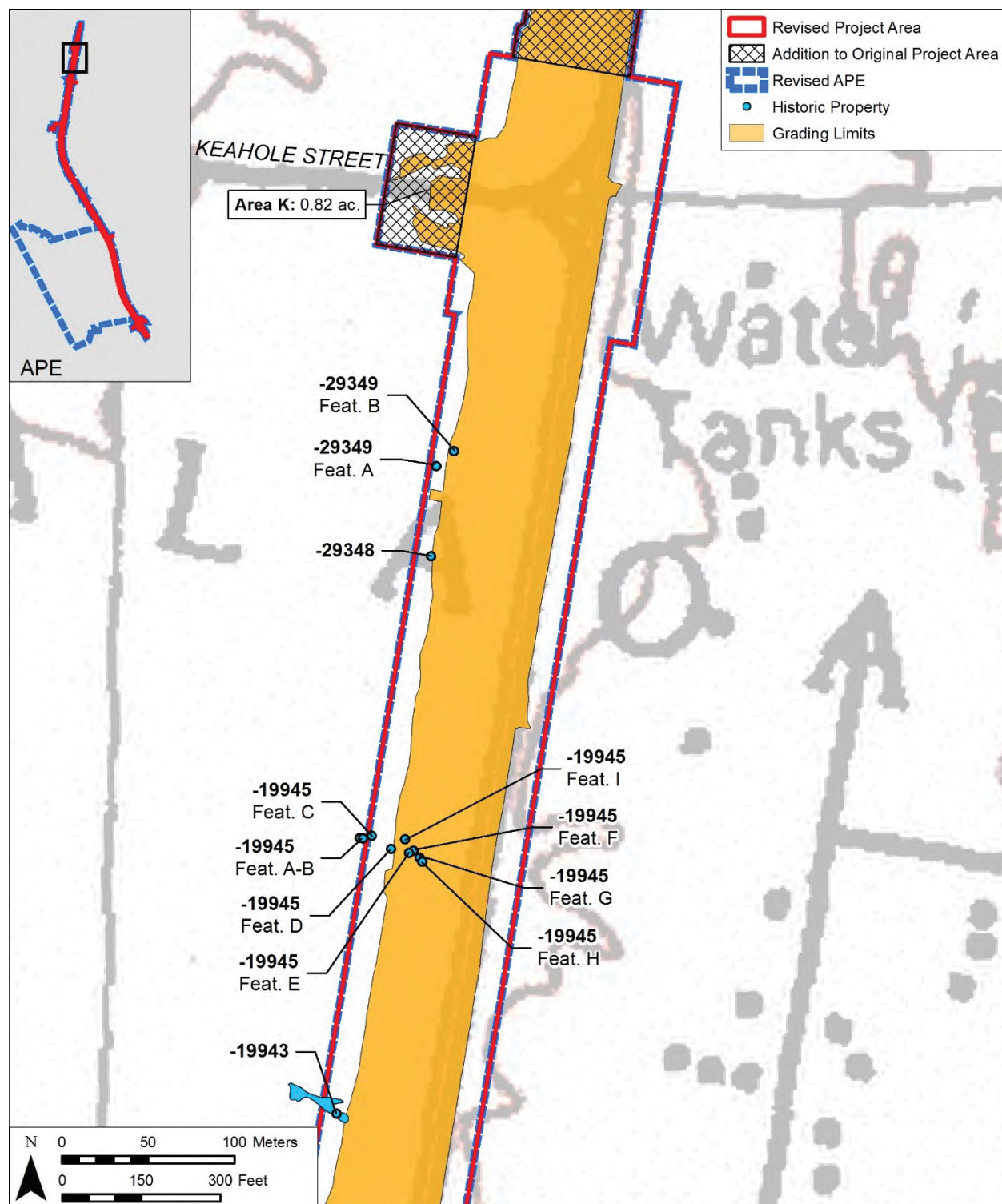


Figure 39. Portion of the 1996 Keahole Point USGS 7.5-minute topographic quadrangle showing Area K relative to project grading limits, documented historic properties, and revised PA and APE boundaries

Note: The APE includes the Project Area (HRS 6E-8).



Figure 26. Portion of the 1996 U.S. Geological Survey 7.5 minute topographic map (Keāhole Point Quadrangle) showing Section 10 of the project area

This diagram is from the original APE maps.

Note: The APE includes the Project Area (HRS 6E-8).

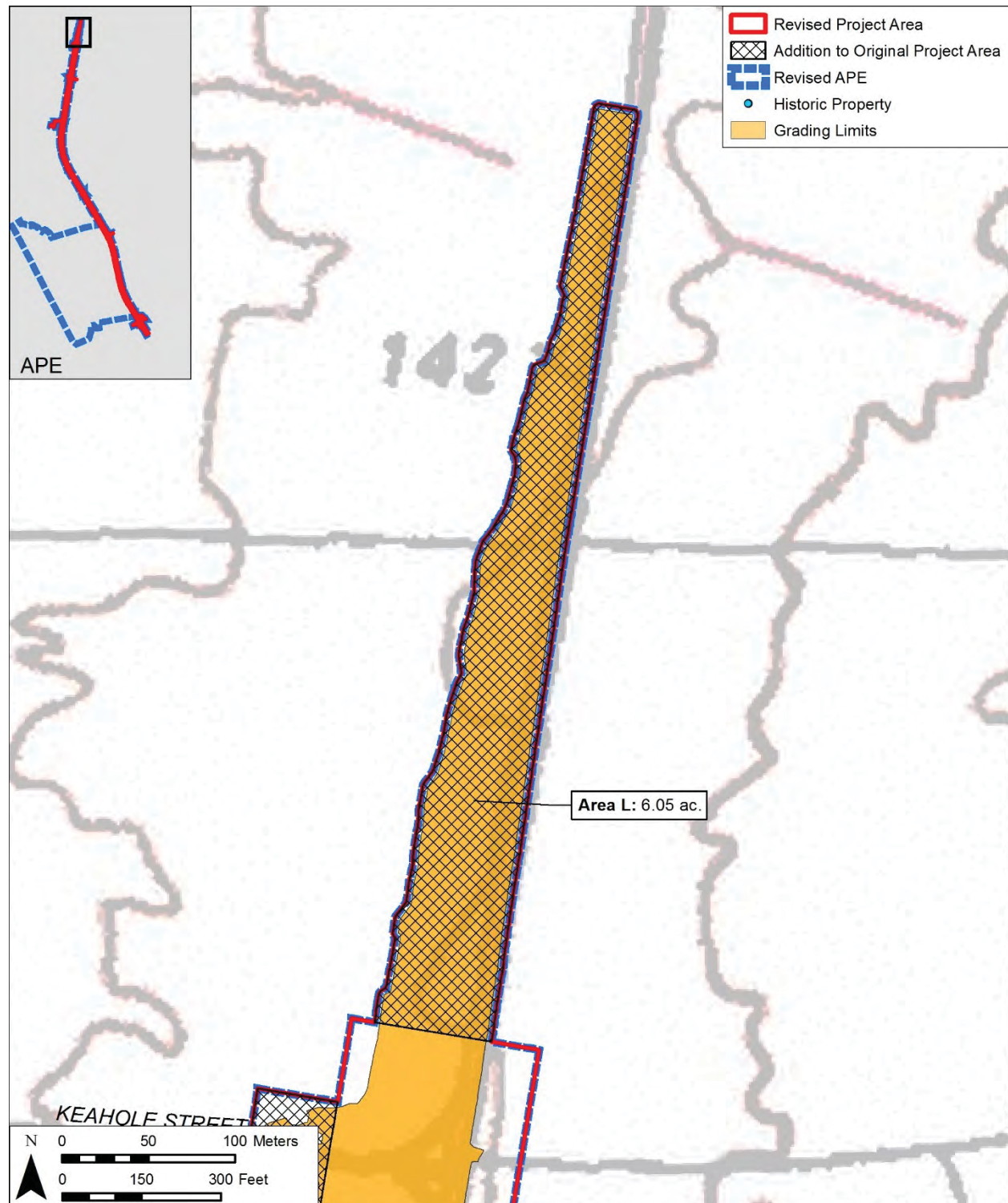


Figure 40. Portion of the 1996 Keahole Point USGS 7.5-minute topographic quadrangle showing Area L relative to project grading limits, documented historic properties, and revised PA and APE boundaries

Note: The APE includes the Project Area (HRS 6E-8).

HISTORIC TRAILS IN APE

<i>SIHP ID No.¹</i>	<i>Site Type</i>	<i>Function of Site</i>	<i>Significance Criteria²</i>	<i>Number of Features</i>
<u>00002</u>	<u>Māmalahoa Trail</u>	<u>Transportation</u>	<u>A, B, C, D and E</u>	<u>1</u>
10714	Trail (mauka-makai),	Transportation	A, C, D and E	3
15324	Trail (mauka-makai)	Transportation	C, D and E	2
18099	Trail (mauka-makai)	Transportation	A, C, D and E	1
19946	Trail (mauka-makai)	Transportation	C, D and E	1
19952	Trail (mauka-makai)	Transportation	C, D and E	1
19953	Trail (mauka-makai)	Transportation	C, D and E	1
19954	Trail (mauka-makai)	Transportation	C, D and E	1
22418	Trail (mauka-makai)	Transportation	C, D and E	1
22507	Trail (mauka-makai)	Transportation	C, D and E	1
28774	Trail (mauka-makai)	Transportation	C, D and E	1
28782	Trail (mauka-makai)	Transportation	C, D and E	1
28784	Trail (mauka-makai)	Transportation	C, D and E	1
28787	Trail (mauka-makai)	Transportation	C, D and E	1
28791	Trail (mauka-makai)	Transportation	C, D and E	1
29272	Trail (mauka-makai)	Transportation	C, D and E	2

Bold, Underlined Sites are Those Proposed to be Used

Queen Kaʻahumanu Highway Widening, Phase 2

Note: The APE includes the Project Area (HRS 6E-8).