



Important Phone Numbers

Carpool Matching Program

Oahu

TDM Office, (808) 692-7695

Visit

<https://hidot.hawaii.gov/highways/rideshare/match/>

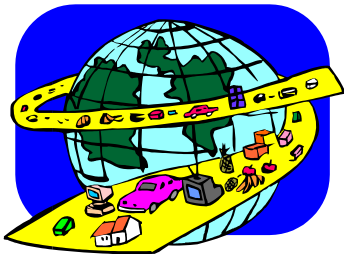
Other Commuting Programs

TheBus, (808) 848-5555

Bicycling

Honolulu Bicycle Coordinator, (808) 768-8335

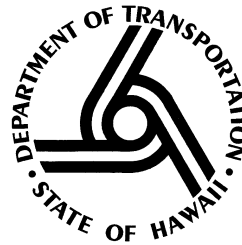
Hawaii Bicycle and Pedestrian Coordinator,
(808) 587-1830



Reduce Stress! Take the bus, ride a bike, or car-pool. Avoid back-up



visit <http://goakamai.org>



State of Hawaii, Department of Transportation

Highways Division, Traffic Branch
Transportation Demand
Management/Ridesharing Office
601 Kamokila Boulevard, Rm 602
Kapolei, Hawaii 96707

Phone: 808-692-7695

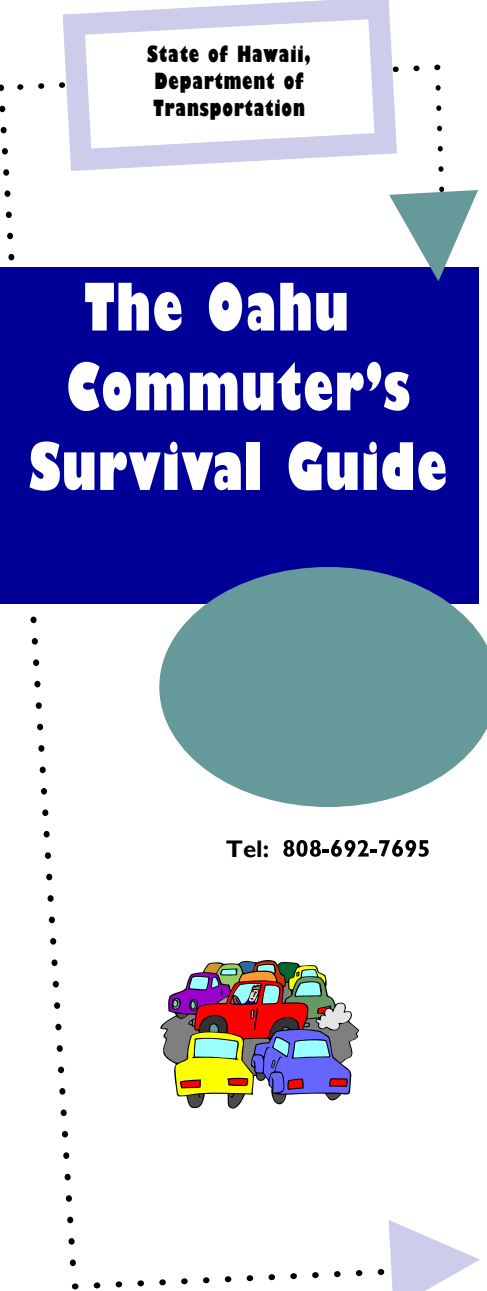
Fax: 808-692-7690

Email: rideshare@hawaii.gov

Statewide Rideshare Website

<https://hidot.hawaii.gov/highways/>

State of Hawaii,
Department of
Transportation



The Oahu Commuter's Survival Guide

Tel: 808-692-7695



State of Hawaii Traffic Demand Management

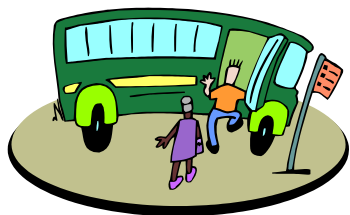
Traffic on Oahu is rising at an alarming rate. The number of registered vehicles on the road has almost doubled in the past 20 years as has the number of motor vehicles per mile of street or highway. This situation makes gridlock an every day occurrence.

We can start by focusing on transportation demand management measures like moving workers to suburban areas which will reduce the need for commuting long distances and by encouraging ridesharing which uses fewer vehicles to transport more people.

The following transportation alternatives will help to make your commute less stressful. For more information, call the Transportation Demand Management (TDM) Office at (808) 692-7695.

Carpooling

People can ride with others who commute to and from the same areas. Carpoolers share in gas and parking expenses. Visit <https://hidot.hawaii.gov/highways/rideshare/match/>



Happy Commuting!

or call (808) 692-7695.

Park & Ride Lots

Park your car for free all day in a Park & Ride lot convenient to your bus stop or carpool meeting place. Locations

- Hawaii Kai (Keahole St across from the Hawaii Kai Towne Center)
- Mililani Mauka (corner of Ukuwai St and Makaikai St)
- Royal Kunia Park (Kupuohi St and Kupuna Lp)
- Wahiawa (Leilehua Rd across from the Hawaii Army National Guard Armory)
- Waialua/Haleiwa (at the Waialua/Haleiwa Community Association Building)

Bicycling

Oahu commuters also have the option of taking their bicycles along when they travel certain routes on TheBus which are equipped with bicycle racks. If you bicycle, be sure to obey all traffic laws, always wear appropriate safety equipment, arrange for secure parking, and be familiar with routine bicycle repairs. For more information, call the Honolulu Bicycle Coordinator at (808) 768-8335 or Hawaii Bicycle and Pedestrian Coordinator at (808) 587-6357. Visit <https://hidot.hawaii.gov/highways/bike-plan-hawaii-master-plan/>

Bus Service

TheBus provides regularly-scheduled fixed-route service along 93 routes that serve all areas of Oahu. Riders may pay one-way fares or purchase monthly bus passes. Persons over 65 and students through high school can ride at a discounted rate. For fare and schedule information, call TheBus at (808) 848-5555 or visit www.thebus.org.

Motorcycles/Mopeds

Motorcycles and mopeds are convenient and relatively inexpensive modes of transportation. Both can park in designated areas. Motorcycles can also use HOV and Zipper lanes. Mopeds require

no insurance and get better gas mileage than most cars, but may not operate on freeways.

High Occupancy Vehicle (HOV) Lanes and Zipper Lanes

HOV and Zipper lanes are lanes reserved for the exclusive use of buses, carpools, vanpools and motorcycles. For detailed locations and duration of HOV and Contraflow lanes see the HOV/Contraflow fact sheet at <http://hidot.hawaii.gov/highways/rideshare/>

Hawaii DOT Rideshare Webpage

Visit <http://hidot.hawaii.gov/highways/rideshare/>

GoAkamai a new travel tool designed to make your commute easier and faster! Visit <http://goakami.org>

Other Alternatives Walking/Jogging, Variable Work Hour Programs, Telecommuting and Employer Programs

Highways Division, Traffic Branch
Transportation Demand
Management/Ridesharing Office
601 Kamokila Boulevard, Rm 602
Kapolei, Hawaii 96707

Phone: 808-692-7695
Fax: 808-692-7690
Email: rideshare@hawaii.gov
Statewide Rideshare Website:
<https://hidot.hawaii.gov/highways/>