

WHAT DO I DO IF I RECEIVE A NOTICE?

1. PAY ONLINE

Go to <https://etraffic.ehawaii.gov> (Click on “Pay Fines”). Credit or debit cards (MasterCard & VISA) are accepted.

*A processing fee for online payment may be charged.

2. PAYMENT BY MAIL

Send bottom portion of your citation along with a check or money order payable to:

Traffic Violations Bureau
 District Court of the First Circuit
 1111 Alakea Street
 Honolulu, HI 96813

Remember to write your citation number on your check or money order. DO NOT MAIL CASH.

3. PAY BY PHONE

Call **1-800-679-5949** within 21 calendar days from the date of the citation. Credit or debit cards (MasterCard & VISA) are accepted.

*A processing fee for phone payment may be charged.

4. PAY IN PERSON

Pay at any district court statewide within 21 calendar days from the date of this Notice. Counter service hours for all district courts (except Hana) are 8:00 A.M. to 4:00 P.M. Monday-Friday. All district courts are closed on state holidays and weekends.

5. WHAT ARE MY OTHER OPTIONS?

Per Hawaii Revised Statute 291J-7, the registered owner of the vehicle is responsible for citations. A citation may be contested by providing evidence the following: (1) You were not the registered owner at the time of the citation. (2) The vehicle passed through the intersection on red to yield to an emergency vehicle. (3) The vehicle was part of an funeral procession escorted by police. (4) The motor vehicle or vehicle license plates were reported stolen. (5) The motor vehicle passed through the intersection on red at the direction of a law enforcement officer.

Public education is the key to making our streets safer for motorists, cyclists and pedestrians. To learn more about red-light running visit:

HDOT Red-Light Safety Program Website

<https://hidot.hawaii.gov/highways/red-light-safety-program/>

National Highway Traffic Safety Administration (NHTSA)

<https://www.nhtsa.gov/>

Governors Highway Safety Association (GHSA)

<https://www.ghsa.org/about/policies-speed-aggressive>

Insurance Institute for Highway Safety (IIHS)

<https://www.iihs.org/topics/red-light-running>

Automated Enforcement Check List (AAA, Advocates, NSC, IIHS, GHSA)

<https://www.iihs.org/news/detail/safety-groups-create-automated-enforcement-checklist-to-encourage-well-designed-programs>

The National Coalition for Safer Roads (NCSR)

<https://ncrsafety.org/key-issues/red-light-safety/>

Verra Mobility (VRRM)

<https://www.verramobility.com>

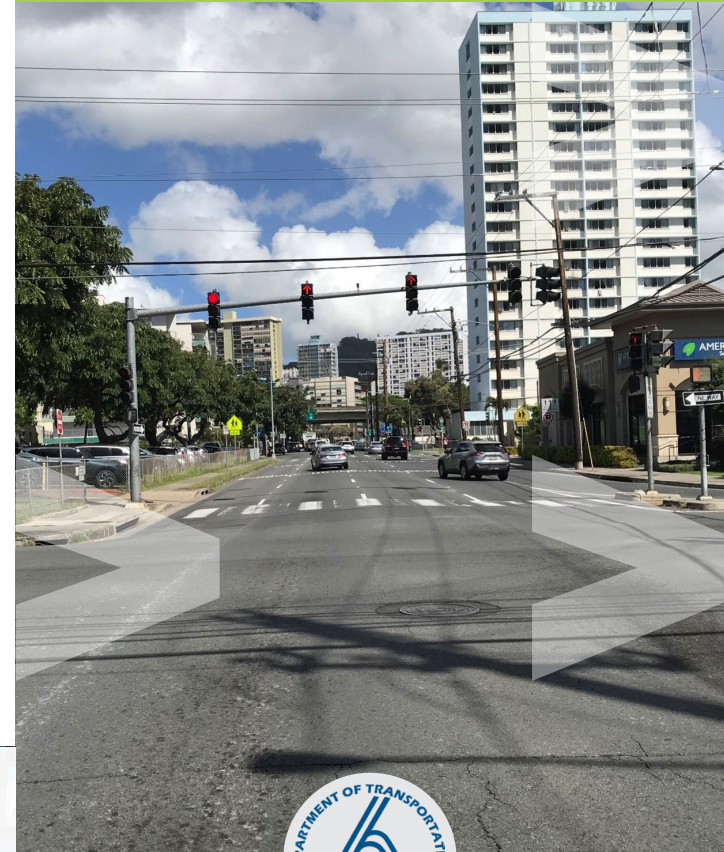


Cameras reduced the fatal red-light running crash rate of large cities by

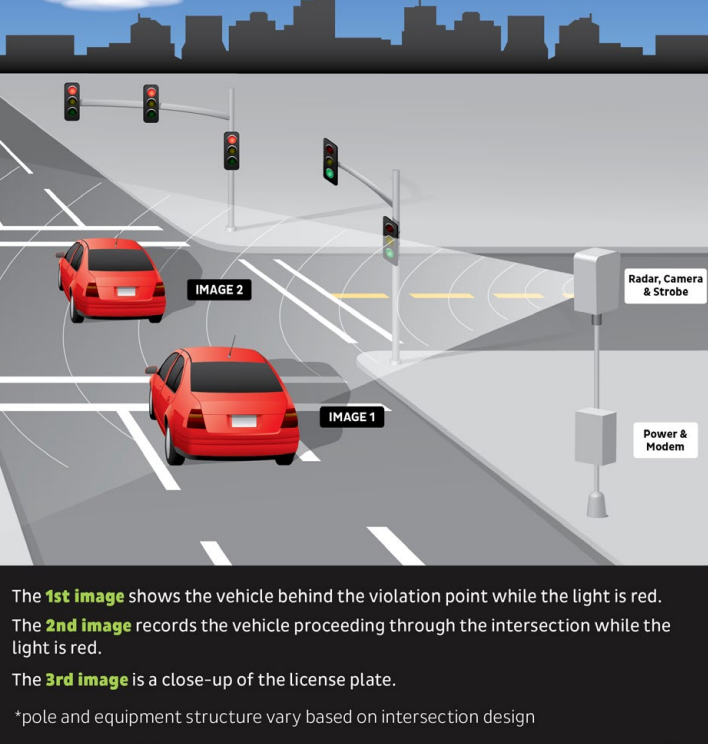
21% and the rate of all types of fatal crashes at signalized intersections by **14%**.

Source: IIHS

HDOT RED-LIGHT SAFETY CAMERA PROGRAM



This program is designed to reduce the number of violations, crashes and injuries caused by motorists running red lights. The objective of the program is to change driver behavior, making the community safer as more and more drivers obey the traffic signals and stop on red.



The **1st image** shows the vehicle behind the violation point while the light is red. The **2nd image** records the vehicle proceeding through the intersection while the light is red. The **3rd image** is a close-up of the license plate.

*pole and equipment structure vary based on intersection design

HOW THE SYSTEM WORKS

Step 1

The system activates upon entering the intersection on a red light. The automated safety camera captures multiple images of an alleged violation from the rear of the vehicle.

Step 2

The first image shows the vehicle prior to entering the intersection while the light is red.

Step 3

The second image shows the vehicle proceeding through the intersection on a red light.

Step 4

The third image shows a close-up of the license plate.

Step 5

Data, including the time, date, and duration of the yellow and red lights, is also recorded and shown on the citation.

Step 6

Cameras also record a 12-second digital video of the violation, including six seconds prior to and six seconds after running the red light. This digital video is viewable on the citation website.

WHY INSTALL RED-LIGHT SAFETY CAMERAS?

Red-light safety camera programs have proven to reduce the number of red-light running collisions and their associated injuries and fatalities.

HDOT is dedicated to keeping its community safe. In 2022, HDOT implemented a red-light safety camera program in Oahu to reduce red-light running violations, collisions and injuries and fatalities associated with them.

WHEN ARE THE RED-LIGHT SAFETY CAMERAS OPERATIONAL?

The red-light safety camera program operates 24 hours a day, seven days a week and operates in all weather conditions.

All intersections with red-light safety cameras are clearly marked.

WHAT IS A RED-LIGHT RUNNING VIOLATION?

A red-light violation consists of a vehicle illegally entering the intersection during the red-light phase. If a vehicle fails to come to a complete stop when the traffic signal controlling the direction of travel is red, this constitutes a citation of **HRS §291C-32(c)**.

The Honolulu Police Department reviews every citation before the infraction is issued.

WHAT IS THE FINE AMOUNT FOR A RED-LIGHT RUNNING CITATION?

The current fine charged in Honolulu is \$97. The fine for first violation allowable under law is \$200.



RED-LIGHT RUNNING FACTS

HALF

OF THE DEATHS

in red-light running crashes are pedestrians, bicyclists, and occupants in other vehicles who are hit by the red-light runners.

Source: AAA Foundation for Traffic Safety



Traffic crashes are the single most significant cause of preventable death and injury in North America. Annual cost of motor vehicle crashes in 2021 was

\$292

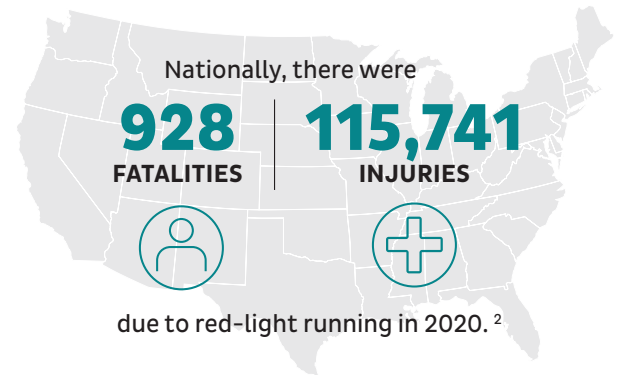
BILLION

Cost to Hawaii drivers

+\$164

MILLION.

Source: NHTSA



Source: IIHS

HAWAII LAW

HRS §291C-32(c) [Disregarding Red Signal Automated Enforcement]