

CORRECTED

- MAY 1 1963
- MAY 2 1963
- MAY 3 1963
- MAY 4 1963
- MAY 5 1963
- MAY 6 1963
- MAY 7 1963
- MAY 8 1963
- MAY 9 1963
- MAY 10 1963
- MAY 11 1963
- MAY 12 1963
- MAY 13 1963
- MAY 14 1963
- MAY 15 1963
- MAY 16 1963
- MAY 17 1963
- MAY 18 1963
- MAY 19 1963
- MAY 20 1963
- MAY 21 1963
- MAY 22 1963
- MAY 23 1963
- MAY 24 1963
- MAY 25 1963
- MAY 26 1963
- MAY 27 1963
- MAY 28 1963
- MAY 29 1963
- MAY 30 1963
- MAY 31 1963
- JUN 1 1963
- JUN 2 1963
- JUN 3 1963
- JUN 4 1963
- JUN 5 1963
- JUN 6 1963
- JUN 7 1963
- JUN 8 1963
- JUN 9 1963
- JUN 10 1963
- JUN 11 1963
- JUN 12 1963
- JUN 13 1963
- JUN 14 1963
- JUN 15 1963
- JUN 16 1963
- JUN 17 1963
- JUN 18 1963
- JUN 19 1963
- JUN 20 1963
- JUN 21 1963
- JUN 22 1963
- JUN 23 1963
- JUN 24 1963
- JUN 25 1963
- JUN 26 1963
- JUN 27 1963
- JUN 28 1963
- JUN 29 1963
- JUN 30 1963
- JUN 31 1963
- JUL 1 1963
- JUL 2 1963
- JUL 3 1963
- JUL 4 1963
- JUL 5 1963
- JUL 6 1963
- JUL 7 1963
- JUL 8 1963
- JUL 9 1963
- JUL 10 1963
- JUL 11 1963
- JUL 12 1963
- JUL 13 1963
- JUL 14 1963
- JUL 15 1963
- JUL 16 1963
- JUL 17 1963
- JUL 18 1963
- JUL 19 1963
- JUL 20 1963
- JUL 21 1963
- JUL 22 1963
- JUL 23 1963
- JUL 24 1963
- JUL 25 1963
- JUL 26 1963
- JUL 27 1963
- JUL 28 1963
- JUL 29 1963
- JUL 30 1963
- JUL 31 1963
- AUG 1 1963
- AUG 2 1963
- AUG 3 1963
- AUG 4 1963
- AUG 5 1963
- AUG 6 1963
- AUG 7 1963
- AUG 8 1963
- AUG 9 1963
- AUG 10 1963
- AUG 11 1963
- AUG 12 1963
- AUG 13 1963
- AUG 14 1963
- AUG 15 1963
- AUG 16 1963
- AUG 17 1963
- AUG 18 1963
- AUG 19 1963
- AUG 20 1963
- AUG 21 1963
- AUG 22 1963
- AUG 23 1963
- AUG 24 1963
- AUG 25 1963
- AUG 26 1963
- AUG 27 1963
- AUG 28 1963
- AUG 29 1963
- AUG 30 1963
- AUG 31 1963
- SEP 1 1963
- SEP 2 1963
- SEP 3 1963
- SEP 4 1963
- SEP 5 1963
- SEP 6 1963
- SEP 7 1963
- SEP 8 1963
- SEP 9 1963
- SEP 10 1963
- SEP 11 1963
- SEP 12 1963
- SEP 13 1963
- SEP 14 1963
- SEP 15 1963
- SEP 16 1963
- SEP 17 1963
- SEP 18 1963
- SEP 19 1963
- SEP 20 1963
- SEP 21 1963
- SEP 22 1963
- SEP 23 1963
- SEP 24 1963
- SEP 25 1963
- SEP 26 1963
- SEP 27 1963
- SEP 28 1963
- SEP 29 1963
- SEP 30 1963
- SEP 31 1963
- OCT 1 1963
- OCT 2 1963
- OCT 3 1963
- OCT 4 1963
- OCT 5 1963
- OCT 6 1963
- OCT 7 1963
- OCT 8 1963
- OCT 9 1963
- OCT 10 1963
- OCT 11 1963
- OCT 12 1963
- OCT 13 1963
- OCT 14 1963
- OCT 15 1963
- OCT 16 1963
- OCT 17 1963
- OCT 18 1963
- OCT 19 1963
- OCT 20 1963
- OCT 21 1963
- OCT 22 1963
- OCT 23 1963
- OCT 24 1963
- OCT 25 1963
- OCT 26 1963
- OCT 27 1963
- OCT 28 1963
- OCT 29 1963
- OCT 30 1963
- OCT 31 1963
- NOV 1 1963
- NOV 2 1963
- NOV 3 1963
- NOV 4 1963
- NOV 5 1963
- NOV 6 1963
- NOV 7 1963
- NOV 8 1963
- NOV 9 1963
- NOV 10 1963
- NOV 11 1963
- NOV 12 1963
- NOV 13 1963
- NOV 14 1963
- NOV 15 1963
- NOV 16 1963
- NOV 17 1963
- NOV 18 1963
- NOV 19 1963
- NOV 20 1963
- NOV 21 1963
- NOV 22 1963
- NOV 23 1963
- NOV 24 1963
- NOV 25 1963
- NOV 26 1963
- NOV 27 1963
- NOV 28 1963
- NOV 29 1963
- NOV 30 1963
- NOV 31 1963
- DEC 1 1963
- DEC 2 1963
- DEC 3 1963
- DEC 4 1963
- DEC 5 1963
- DEC 6 1963
- DEC 7 1963
- DEC 8 1963
- DEC 9 1963
- DEC 10 1963
- DEC 11 1963
- DEC 12 1963
- DEC 13 1963
- DEC 14 1963
- DEC 15 1963
- DEC 16 1963
- DEC 17 1963
- DEC 18 1963
- DEC 19 1963
- DEC 20 1963
- DEC 21 1963
- DEC 22 1963
- DEC 23 1963
- DEC 24 1963
- DEC 25 1963
- DEC 26 1963
- DEC 27 1963
- DEC 28 1963
- DEC 29 1963
- DEC 30 1963
- DEC 31 1963

NOTE: Parcels 19 to 22 incl. owned by State of Hawaii (Dept. of Trans.)

33 City & County of Honolulu (Golf Shop Hawaii Inc.)

True North 1" = 600'

Civil No. 510 (6.83 ac.)

HARBOR

PEARL Middle Loch

United States of America  
 U. S. NAVAL RESERVATION  
 Civil No. 526 (645.146 acs.)  
 Leased to Oahu Sugar Co. - 1259.610 Ac. - 9302-28  
 Not leased - 211.659 Ac. - 9302-1

Civil No. 465 (351.00 acs.)  
 APP.  
 CT. HANALOA FISH POND  
 Walker Bay

PEARL West Loch  
 HARBOR

PARCEL 12

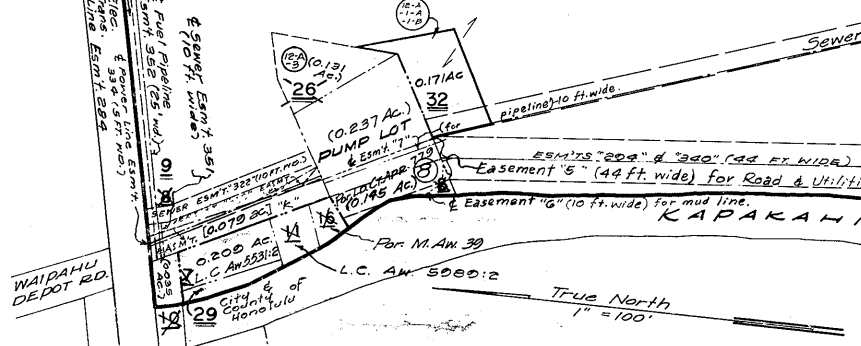
PARCEL 11

PARCEL 10

PARCEL 9

State of Hawaii (City & County of Hon.)  
 Sewage Treatment Plant & Incinerator  
 Ash Disposal Site  
 27

For. Waipio Ewa Oahu



INSET

Dropped parcels: 3 to 8 incl. 10 to 17 incl. 25, 26

TAXATION MAPS BUREAU  
 TERRITORY OF HAWAII  
**TAX MAP**  
 FIRST DIVISION

ZONE	SEC.	PLAT
9	3	02

CONTAINING PARCELS  
 SCALE: AS NOTED

ULUMOKU FISH POND

SUBJECT TO CHANGE

PRINTED

Div. No. 3327 (Revised 6/1/63)  
 Source: Lt. Ct. App. 1000 & 1179 & T.M.B.  
 By: H.H. June 1943