

DEPARTMENT OF TRANSPORTATION

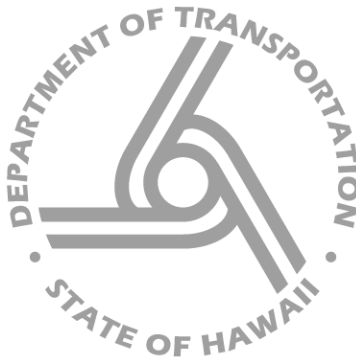
REPORT TO THE GOVERNOR 2003





# Table of Contents

Director's Letter.....	5
Airports Division.....	6
Harbors Division.....	9
Highways Division.....	12
Office of Civil Rights.....	19
Commission on Transportation.....	21
Airports: Statement of Revenues, Expenditures.....	22
Harbors: Statement of Revenues, Expenditures.....	23
Highways: Statement of Revenues, Expenditures.....	24
Projects Completed & In Progress FY 2002-2003.....	25





# Director's Message

## *Aloha!*

I am pleased to submit the Hawaii State Department of Transportation's annual report for the fiscal year ending June 30, 2003.

My first year as Director was been an exciting one, marked by large-scale highway projects, much-needed airport and harbor improvements, innovative and "out-of-the-box" efforts to ease traffic congestion, and the implementation of measures designed to keep Hawaii's land, air, and sea travelers safe.

Our Department saw many changes and I was proud to add two new Deputy Directors, Bruce Matsui and Brian Sekiguchi, to my staff. These individuals, who brought with them a wealth of experience and enthusiasm, continue to express their commitment to the Department's mission of providing a safe, efficient, accessible and inter-modal transportation system that ensures the mobility of people and goods, and enhances and/or preserves economic prosperity and the quality of life.

Planning of the highly anticipated H-1 widening project near the Waimalu viaduct continued at an accelerated pace in FY03. The \$55 million project, which began construction in May of 2004, will address the "bottleneck" heading to the Pearl City off-ramp by increasing highway lanes from five to six. The installation of closed-circuit television to monitor traffic is another project benefit.

The H-1 widening project required night work and periodic lane closures. Due to the anticipated disruption to the surrounding area, the DOT's Public Information Office worked overtime in their community outreach efforts, taking information directly to Waimalu residents and actively keeping commuters informed. Efforts to maintain and encourage communication with those in the affected area lead to the creation of a 24-hour hotline, where concerns and complaints are addressed by DOT staff immediately.

The state's mounting traffic congestion, particularly in the Honolulu business corridor, led the Highways Division to reexamine the idea of contra-flowing Nimitz Highway. Through a demonstration project, the Department proved its theory, that a contra-flow lane would ease congestion and reduce travel time for town-bound commuters in the morning hours. The success of the project was punctuated by the praise of many Kalihi-area business owners, who were skeptical at the onset of the project.

Throughout the year, Department staff continued to work toward solutions to "bottleneck" areas on Oahu and conducted studies to improve traffic flow on H-1. High-volume areas, such as the Lunalilo Street on-ramp and Vineyard Boulevard off-ramp, were targeted for improvements (and in that situation, an immediate demonstration project). The Department continues to study the feasibility of projects designed to improve eastbound traffic between Middle Street and the University area, the heart of urban Honolulu congestion, while working with the immediate communities and collecting and considering their input.

Outside of Honolulu, plans for the design of the North-South Road in Ewa continued in FY03. The road, which will run between Kapolei Parkway and H-1, is expected to improve traffic flow and decrease congestion on Fort Weaver Road, which is also scheduled for improvements.

Statewide, highway improvements remained a focus. Several bridge seismic retrofit projects on the Big Island were completed. The design for the widening of Maui's Mokulele Highway continued and on-going studies for Kauai highways seek to find solutions to growing traffic demands.

Along with the rest of the nation, Hawaii's airports continue to face challenges post-9/11. Stricter regulations and enforcement impacted travelers, who were often faced with long security lines and cumbersome requirements.

Through congressional mandates, the Transportation Security Administration undertook a nationwide initiative to reconfigure passenger screening checkpoints by November 2002 and to screen all checked baggage for explosives by December 2002.

These requirements, along with the global effects of the war in Iraq and the outbreak of SARS, contributed to a 29.6 percent increase in operating expenses for the Airports Division. Statewide, air passenger traffic dipped slightly in FY03, with about 31 million passengers passing through our States' terminals.

To meet the demand of passenger terminal space, the Harbors Division designed a new cruise ship terminal at Pier 2, Honolulu Harbor. Large enough to accommodate 965-foot cruise ships, construction on the terminal commenced in Spring of 2004 and is expected to conclude later this year.

FY03 was a year of planning and designing, information-gathering and decision-making. In future Reports to the Governor, I look forward to sharing the results of the year's efforts as the Hawaii State Department of Transportation continues its commitment to provide safe, secure, efficient and affordable modes of transportation in and around our island state.

Mahalo nui loa,



Rodney K. Haraga  
Director



# Airports Division

The Airports Division operates and maintains fifteen airports within the State of Hawaii. Airports are operated, managed, and financed as an integrated system. Honolulu International Airport on the island of Oahu is the State's principal airport, with facilities for inter-island, domestic overseas, and international flights. Hawaii's other major airports are Kahului Airport (Maui), Hilo International Airport (Hawaii), Kona International Airport at Keahole (Hawaii), and Lihue Airport (Kauai). Kahului and Kona International at Keahole accommodate inter-island and domestic overseas flights as well as flights to and from Canada. Lihue Airport has facilities for inter-island and domestic overseas flights. International flights also arrive and depart from Kona International at Keahole.

During fiscal years 2002 and 2003, Honolulu International Airport accommodated 60.7% and 61.4% of the State's total passenger traffic, respectively. The other four principal airports comprised 37.9% of the total passenger traffic in fiscal years 2002 and 2003.

The other airports in the airports system are Port Allen on the island of Kauai, Dillingham Airfield (currently leased from the United States military) on the island of Oahu, Kapalua and Hana Airports on the island of Maui, Waimea-Kohala and Upolu Airports on the island of Hawaii, Lanai Airport on the island of Lanai, and Molokai and Kalau-papa Airports on the island of Molokai. These airport facilities are utilized by air carriers, general aviation, and the military, with the exception of the Upolu and Port Allen Airports, which are used exclusively by general aviation. The Airports Division assumed operations of Kalaeloa Airport (formerly Barbers Point Naval Air Station) on the island of Oahu as a general reliever airport for the Honolulu International Airport on July 1, 1999.

The Airports Division is financially self-sustaining. The Department of Transportation (DOT) is authorized to impose rates and collect charges for airport services and lease properties to generate revenues to fund operating expenses. The Capital Improvements Program (CIP) is funded by federal grants, airport revenues, and airports system revenue bonds issued by the Airports Division. Since 1992, Passenger Facility Charges (PFCs) have become an important source of funding for FAA-approved airport capital projects throughout the country. Federal and state legislation allow the Airports Division to charge PFCs on overseas and international flights.



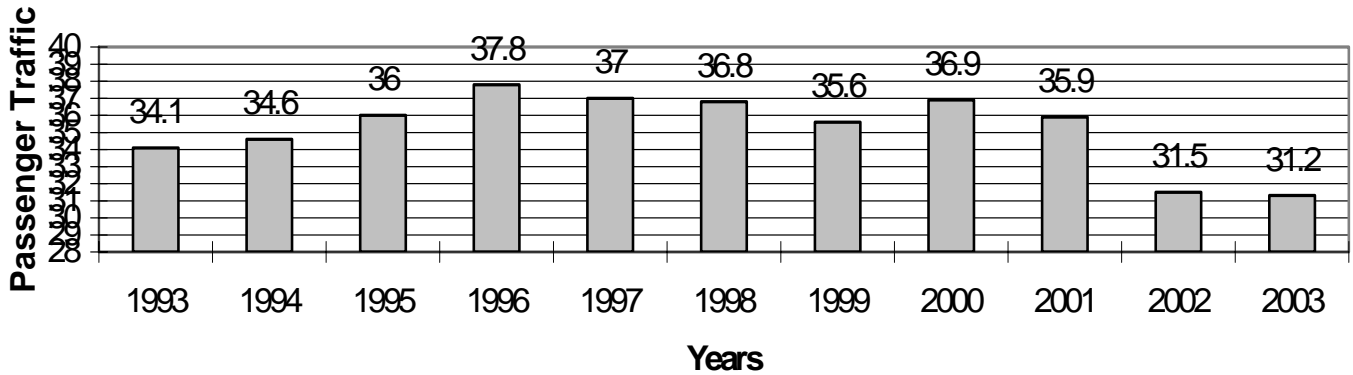
A \$3.00 or \$4.50 PFC for each overseas and international passenger provides approximately \$10 million to \$15 million annually for airport capital improvements.

Globally, the air transportation industry is still facing challenges in the aftermath of the September 11, 2001 terrorist attacks, which fundamentally altered the economic structure of airports. Like many airport operators across the nation, the Airports Division is working to manage the statewide system of airports in uncertain economic conditions.

The November 19, 2001 enactment of the Aviation and Transportation Security Act established the Transportation Security Administration (TSA). TSA now oversees all transportation security including

Honolulu International Airport			Kahului Airport			Kona International Airport at Keahole			Lihue Airport		
Fiscal Year	Passengers	Change	Fiscal Year	Passengers	Change	Fiscal Year	Passengers	Change	Fiscal Year	Passengers	Change
2003	19,060,548	0.1%	2003	5,386,688	0.1%	2003	2,571,730	1.4%	2003	2,524,432	-1.5%
2002	19,037,893	-14.2%	2002	5,380,715	-12.7%	2002	2,536,013	-8.8%	2002	2,563,695	-9.2%
2001	22,197,793	-3.6%	2001	6,161,475	1.0%	2001	2,780,813	0.2%	2001	2,823,056	-1.4%
2000	23,029,937	3.4%	2000	6,100,969	4.2%	2000	2,775,722	5.0%	2000	2,864,194	6.4%
1999	22,275,743	-5.0%	1999	5,854,693	-1.1%	1999	2,643,999	-0.4%	1999	2,692,206	4.2%

## Hawaii Airports Passenger Traffic (in millions)



airport security checkpoint screening, previously managed by the airlines. As with many airports, heightened passenger security screening requirements have created long lines and extended delays for passengers. The Airports Division continues to work with the TSA and other agencies to minimize inconvenience to the traveling public.

Despite decreases to passenger traffic, landed weights, the number of flights and the total number of international passengers, the Airports Division improved its FY 2003 financial results. Operating revenues increased \$54.1 million, or 29.6 percent, over FY 2002.

Decreases in passenger traffic are attributed to global events such as the war with Iraq, the consolidations of inter-island flights by Aloha Airlines and Hawaiian Airlines, and the outbreak of Severe Acute Respiratory Syndrome (SARS) in Asia. International passenger travel from Asia decreased dramatically because of the war and SARS. However, the volume of aircraft operations increased by 4.5 percent from FY 2002 due to increases in air taxi and general aviation activities at Kona International Airport at Keahole and Hilo International Airport, both on the island of Hawaii.

In FY 2003, there were seven construction bid openings totaling almost \$28 million. Significant projects include the Overseas Terminal

Improvements, Phase II at Honolulu International Airport; Electrical System Upgrade for TSA at Honolulu International Airport; and Kalaeloa Airport Improvements at Kalaeloa Airport.

Several construction projects that were initiated prior to FY 2003 continued during the fiscal year. These projects include the Terminal Roof Replacement at Hilo International Airport; General Aviation Site Preparation at Kona International Airport at Keahole; Third Level Overseas Terminal Roadway Strengthening at Honolulu International Airport; Ticket Lobby Canopies at Honolulu International Airport; and Statewide Architectural Barrier Removal Phase III. These projects totaled approximately \$34 million in construction costs.

Six major construction projects, totaling over \$6 million, completed in FY 2003 include the Perimeter Roadway at Honolulu International Airport; Overseas Terminal Improvements at Honolulu International Airport; Molokai Airport Runway Lighting System; and Statewide Architectural Barrier Removal Phase III at Molokai, Lanai and Kauai Airports. During FY 2003, the Airports Division expended over \$45 million on capital activities.

Hilo International Airport			Molokai Airport			Lanai Airport			Kapalua Airport		
Fiscal Year	Passengers	Change	Fiscal Year	Passengers	Change	Fiscal Year	Passengers	Change	Fiscal Year	Passengers	Change
2003	1,311,531	-5.9%	2003	195,809	-10.6%	2003	123,532	-16.7%	2003	90,058	16.1%
2002	1,394,152	-11.1%	2002	218,913	-7.8%	2002	148,300	-1.1%	2002	77,588	-34.8%
2001	1,568,165	-2.6%	2001	237,482	-10.2%	2001	149,974	-10.0%	2001	119,038	-5.3%
2000	1,610,368	4.3%	2000	264,350	-0.6%	2000	166,568	-7.2%	2000	125,733	-10.8%
1999	1,543,280	-5.7%	1999	265,941	10.3%	1999	179,448	-1.5%	1999	140,921	-10.0%

Airport	Cargo (tons)			Mail (tons)			Operations		
	FY2003	FY2002	% Change	FY2003	FY2002	% Change	FY2003	FY2002	% Change
Honolulu International (HNL)	363,203	404,537	(10.2)	83,449	74,954	11.3	310,986	316,374	(1.7)
Kahului (OGG)	47,534	35,696	33.2	9,946	10,325	(3.7)	155,727	155,921	(0.1)
Hilo International (ITO)	21,012	22,189	(5.3)	1,353	3,007	(55.0)	102,948	88,097	16.9
Kona International at Keahole (KOA)	27,720	22,808	21.5	4,400	4,456	(1.3)	123,651	116,704	6.0
Lihue (LIH)	14,447	13,456	7.4	1,366	2,298	(40.6)	98,644	102,711	(4.0)
Lanai (LNY)	806	733	10.0	9	1	800.0	10,188	11,622	(12.3)
Molokai (MKK)	1,300	1,253	3.8	0	2	(100.0)	42,434	44,404	(4.4)
Waimea (MUE)	23	3	666.7	81	0	100.0	2,430	2,774	(12.4)
Hana (HNM)	81	62	30.6	0	0	0	6,070	5,072	19.7
Kalaupapa (LUP)	195	182	7.1	3	0	100.0	5,080	3,754	35.3
Kapalua (JHM)	543	535	1.5	0	0	0	6,516	5,388	20.9
Totals	476,864	501,454	(4.9)	100,607	95,043	5.9	864,674	852,821	1.4



# Harbors Division

The statewide system of commercial harbors consists of 10 harbors on six islands. The system is vital to the state's economy, as Hawaii imports about 80 percent of what it consumes, of which, roughly 99 percent enters the state through commercial harbors.

In Fiscal Year (FY) 2003, the State's commercial harbors accommodated 1,638,526 cruise ship passengers, compared to 1,087,405 passengers in Fiscal Year 2002.

The Harbors Master Plan provides an overview of Hawaii's commercial harbor system, facilities, operations, growth projections and projected needs.

Harbor security projects remain a high priority. In general, projects relate to improvements to perimeter fencing and barricades, bomb blast abatement, and video monitoring. Although the Harbors Division was successful in securing some federal funding to assist with many security-related improvements, most of the necessary funding was provided through the Harbors Special Fund.

## Honolulu Harbor

Honolulu Harbor is the hub of the State harbor system. Most cargo, whether bound for Oahu or the other islands, passes through Honolulu Harbor.

With the growth of the cruise ship industry, Honolulu Harbor welcomed 441,176 passengers during FY 2003, compared to

316,572 during FY 2002.

To meet the increased demand for passenger terminal space, the Harbors Division is in the process of building a new cruise ship terminal at Honolulu Harbor's Pier 2. When completed, the terminal will be large enough to house the 965-foot, "state-of-the-art" ships that cruise the Hawaiian islands.

To ensure that the operational capabilities of the harbor are sustained, \$3 million has been encumbered for special maintenance projects. Major special maintenance projects undertaken during FY 2003 include repairs to pier structures; container yard flexible and rigid pavements; and water, sewer and electrical utilities; as well as building renovations (roofing and restroom facilities improvements); and site and building modifications for ADA compliance.





## **Kewalo Basin**

A total of \$300,000 was encumbered in FY 2003 for special maintenance projects for repairs to the harbor's electrical system to gain compliance with the national electrical code.

## **Kahului Harbor**

Kahului Harbor is the third busiest harbor in the state system and the busiest outside of Oahu.

In FY 2003, Kahului Harbor received 241,530 cruise ship passengers, compared to 150,119 passengers in FY 2002.

An \$8.7 million project in construction includes the extension of Pier 1C by approximately 300 feet to accommodate Matson Navigation Company's heavy equipment and to allow multiple cruise ship berthing. This project includes the installation of a new drainage system and area lighting, as well as the extension of an existing water line. The project was completed and accepted on July 18, 2003.

\$350,000 was encumbered for major special maintenance projects in FY 2003. Major special maintenance projects undertaken during FY 2003 include repairs to pier structures; container yard flexible and rigid pavements; and water, sewer and electrical utilities; as well as building renovations (roofing and restroom facilities improvements); and site and building modifications for ADA compliance. Funds were also used to ensure compliance with U.S. Coast Guard environmental regulations.

## **Kalaeloa Barbers Point Harbor**

Kalaeloa Barbers Point Harbor is the second busiest harbor in the State system. Federal/State Kalaeloa Barbers Point Harbor modification studies are in progress.

During the fiscal year, \$54,000 was encumbered for special maintenance projects to maintain the harbor's operational capabilities. One of the major special maintenance projects undertaken during FY 2003 was a waterline repair to ensure safe drinking water.

## **Kaunakakai Harbor**

\$190,000 was encumbered in FY 2003 for a special maintenance project to repair a pier deck and for fendering system and causeway maintenance at Kaunakakai Harbor.

## **Hilo Harbor**

Hilo is the Big Island's busiest port and is second only to Honolulu as a port of call for cruise vessels. In FY 2003, Hilo Harbor accommodated 486,996 passengers, compared to 305,035 passengers in FY 2002.

To maintain harbor operations, \$510,000 was encumbered for special maintenance projects. Major special maintenance projects undertaken during FY 2003 include repairs to pier structures and electrical systems; building repairs; site and building modifications for ADA compliance; and security enhancements. Funding was also utilized to ensure compliance with U.S. Coast Guard environmental regulations.

## **Kawaihae Harbor**

During the fiscal year, \$125,000 was obligated for special maintenance projects in Kawaihae, which included pier and building structure repairs.

## **Nawiliwili Harbor**

In FY 2003, Nawiliwili Harbor welcomed 468,825 cruise ship passengers, compared to 314,437 FY 2002.

\$464,000 was encumbered in FY 2003 for special maintenance projects for repairs to buildings and pier structures; site and building modifications for ADA compliance; and enhancements for harbor security. Funds

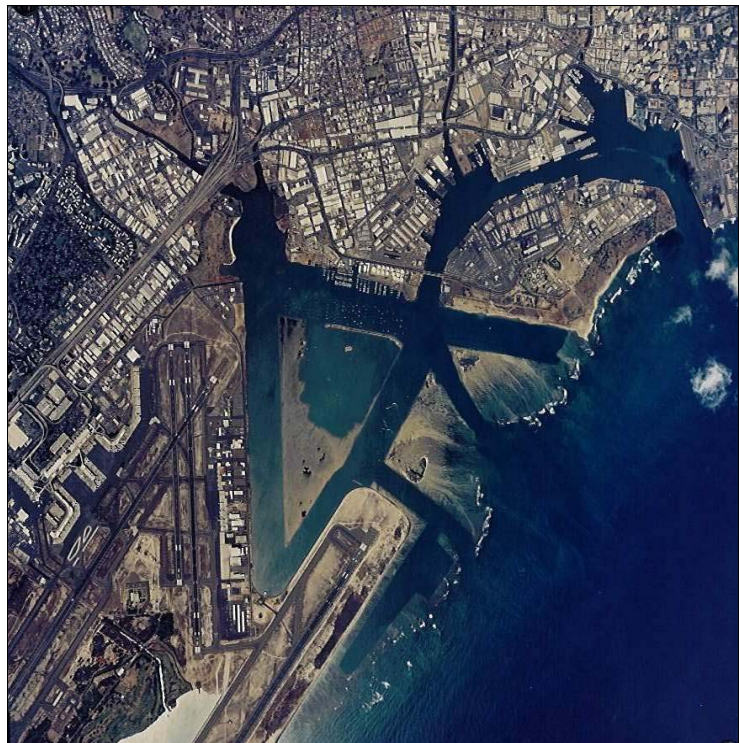
were also utilized to ensure compliance with U.S. Coast Guard environmental regulations.

## **Port Allen Harbor**

Port Allen Harbor is located on the southern end of Kauai. A total of \$154,000 was encumbered in FY 2003 for special maintenance projects to repair the existing shed and to implement measures to ensure ADA compliance.

## **Kaumalapau Harbor**

The State's newest harbor is Kaumalapau Harbor on the island of Lanai. This harbor on the southwest coast of Lanai is the island's only commercial harbor. One major project underway is the Army Corps of Engineers' modifications and repairs to the existing breakwater. Currently in design, this endeavor will repair the existing Kaumalapau Harbor breakwater to reduce wave action in the harbor and increase harbor safety and usability.



# Highways Division

The Highways Division manages approximately 2,400 highway lane miles on six islands. The Division is committed to improving the safety of its roads as it works toward increasing traffic capacity and improving flow while operating within the confines of limited resources and personnel.

The State continued its efforts to increase public involvement in the highway planning process. Nine public hearings were held outside of Oahu on the 2004-2006 Statewide Transportation Improvement Program (STIP). Based on input received during these public hearings, the projects listed in the STIP were prioritized, in accordance with the highway funds available.

Also during this period, an updated draft Bike Plan Hawaii was completed and distributed for public input.

## Oahu District

\$24 million worth of construction projects were completed on Oahu. These projects included the installation of emergency telephones on Interstate Route H-2; the seismic retrofit of the Kailua Interchange on Interstate Route H-3; rock

scaling on Kalaniana'ole Highway at Makapuu; improvements to, (1) Kamehameha Highway (Kamananui Road intersection), (2) Farrington Highway (Waikele Road to Aniani Place), and (3) Pali Highway (School Street to Waakanaka Street). Numerous highway lighting improvements and the widening of Keaahala Road (Kahekili Highway to Pookela Street) were also completed.



Resurfacing projects, many of which continue into FY 2004, totaled \$31 million and included Kalaniana'ole Highway from Ainakoa Street to West Hind Drive; Likelike Highway from Emmeline Place to Wilson Tunnel; and Kamehameha

Highway from Waiahole Valley to Crouching Lion Inn.

Construction projects, both completed and ongoing totaled \$53 million and included the Interstate Route H-1 Palailai Interchange reconstruction; the Interstate Route H-1 installation of emergency telephones; Mokapu Saddle Road slope stability efforts in the vicinity of Mikiola Drive to Kahinani Place; pedestrian facility modifications & ADA compliance measures at various locations; Kamehameha Highway sidewalk improvements from Meheula Parkway to Kuahelani

Avenue; Kamehameha Highway Halawa Stream Bridge (Inbound) replacement; Wilikina Drive intersection improvements at McNair Gate; Sand Island Access Road intersection improvements at Road 2; Ala Moana Boulevard traffic signal modernization entrance and exit to Ala Moana Shopping Center; Nimitz Highway rehabilitation and water system improvements from Sumner Street to Queen Street; Nimitz Highway intersection improvements at Sand Island Access Road; Kamehameha Highway drainage improvements in the vicinity of Kahuku Hospital and replacement of Kii Bridge; Moanalua Freeway highway lighting improvements from Kamehameha Highway to Halawa Interchange; Farrington Highway landscaping from Kamehameha Highway to Fort Weaver Road; and Nimitz Highway improvements for contra-flow operations from Keehi Interchange to Pacific Street.



The Highways Division continued the design of the North-South Road project in Ewa between the Kapolei Parkway and Interstate H-1 Freeway to ease growing congestion on Fort Weaver Road and to provide access to future area developments. Work continued to widen Fort Weaver Road from four to six lanes from the vicinity of Laulaunui Street to Geiger Road to improve traffic flow. The first phase near Laulaunui Street was scheduled to commence construction in early 2004.

The Nimitz Highway contra-flow demonstration project is an example of the Department maximizing highway capacity in light of reduced resources and staffing. By contra-flowing one of the Ewa-bound lanes on Nimitz Highway, one additional town bound was created during the

morning's peak period (5:30 am to 8:30 am) from Keehi Interchange to Pier 32. The contra-flow lane is a High Occupancy Vehicle lane, restricted to vehicles with two or more occupants. The impact to traffic continues to be monitored, though significant improvements in travel time on Nimitz Highway have been observed.

During the fiscal year, the Department awarded the contract for the westbound widening of the Interstate H-1 Freeway between Kaonohi Street to the Pearl City Off-Ramp (\$55 million). Construction commenced in June 2004.

Planning studies continued in an effort to improve traffic flow on the Interstate H-1 Freeway, including planned improvements to the Waiawa Interchange and eastbound improvements between the Waiiau Interchange and Halawa Interchange. In urban Honolulu, the Division updated a study to improve westbound traffic flow at the Lunalilo Street On-Ramp and Vineyard Boulevard Off-Ramp. Also completed were feasibility assessments for projects to improve eastbound

traffic flow on the H-1 Freeway between Middle Street and the University area, including the possibility of adding an additional eastbound lane between the Kalihi Interchange and the Vineyard Off-Ramp.

Bids for the \$12 million Moanalua Freeway resurfacing, Halawa Interchange to Kahauiki Interchange, were opened in June 2003 and construction was scheduled to begin in the spring of 2004. The project includes three demonstration pavement types - Stone Matrix Asphalt, Superpave Asphalt Concrete Pavement, and Ultra Thin Whitetopping.

The Office of Hawaiian Affairs (OHA), in cooperation with the Highways Division, engaged in community outreach and planning work related to the H-3 Interpretive Development Plan (IDP), which addresses the interpretation, maintenance, and appropriate treatment of various archaeological sites and artifacts that were impacted by the construction of the Interstate H-3 Freeway in the Halawa and Haiku Valleys. OHA conducted a series of public meetings and worked on the strategic plan to develop general themes and recommendations for the IDP.

In FY 2003, the first phase of the Freeway Man-

agement System (FMS) for Interstate H-1 and H-2 Freeways and Moanalua Freeway was in the design stage. The FMS was designed to be implemented in six phases and will develop a freeway incident management program and traveler information system; install vehicle detectors, closed circuit TV and dynamic message signs; and integrate with the City & County of Honolulu's Traffic Surveillance System and the State's H-3 Tunnel Surveillance System. Deployment of freeway service patrols and development of a business plan for implementing level 1 of the Federal Motor Carrier Safety Administration Commercial Vehicle Information Systems and Networks were other projects in progress during the year. In association with the Oahu Metropolitan Planning Organization's (OMPO) Intelligent Transportation Systems (ITS) Task Force, these projects were coordinated in conjunction with OMPO's endeavor to finalize the Oahu ITS Architecture, ITS Integration Strategy Plan, and Concept of Operations Plan. OMPO's effort establishes a framework for planning, designing, implementing, integrating, and deploying ITS systems on Oahu.

## Hawaii District

During FY 2003, construction of the \$6.4 million



widening and resurfacing of Keaau-Pahoa Road, Paradise Drive to Pahoa, was substantially completed. The project resurfaced the roadway and constructed paved shoulders and other improvements at five intersections along the Keaau-Pahoa Road. A waterline for the Hawaiian Homelands Makuu Farms Subdivision was also installed.

Seismic retrofit projects for a number of bridges in the Hamakua, North Hilo and South Hilo Districts continued during this period. Eight Hawaii District contracts, totaling \$15 million, continued or were completed.



Construction totaling \$11.6 million for lead-based paint removal at the Kapue, Kolekole, Paheehee and Hakalau Bridges was completed in 2003.

\$17.5 million worth of construction to widen the Kupapaulua Bridge continued, with completion slated for late 2004.

Approximately \$10.2 million of highway resurfacing projects in the North Hilo, Hamakua, North Kohala, South Kohala, Puna, North Kona, and South Kona Districts, and \$5.9 million of guard-rail and shoulder improvement projects in South Kohala and Kau, were underway or completed during the fiscal year.

Queen Kaahumanu Highway intersection improvements at Waikoloa Beach Drive and Waikoloa Road, totaling \$1.9 million, were also completed, providing traffic signal systems and highway lightings at both intersections.

Other completed projects on Big Island included the \$1.0 million bike lane project on Kamehameha Avenue between Kanoelehua Avenue

and the Hilo Bayfront Park and a \$599,000 Queen Kaahumanu Highway drainage improvement project in the vicinity of the Mauna Kea Beach Hotel.

During this period, work started on intersection improvements at the Volcano Road/Huina Road and the Kawaihae Road/Puukohola Heiau National Historic Site intersections.

The widening of the Queen Kaahumanu Highway to four lanes from Henry Street to the Kealakehe Parkway will be put out to bid as a Design/Build contract in 2004. Planning studies continue on the Waimea Bypass and have commenced on the Kawaihae Bypass. A smaller planning study to improve the Waiaka Stream Bridge and approaches at the Kawaihae Road/Kohala Mountain Road intersection also continues in an effort to increase safety in the area.

The \$20 million Kealakaha Stream Bridge replacement, using segmental bridge construction, is scheduled for bidding in 2004.

Finally, the \$1.7 million Americans with Disabilities Act compliance project for the Honokaa-Waipio Road and Akoni Pule Highway in the towns of Honokaa, Kapaau, and Hawi neared design completion in FY 2003.

### Maui District

Congestion-relieving highway infrastructure improvements that were completed during the year include the Honoapiilani Highway traffic signal modernization, from Kaanapali towards Lahaina; Kaahumanu Avenue traffic signal modernization, from High Street to Wharf Street; and Honoapiilani Highway Widening, from North Kihei Road to Kuihelani Highway.

Other Maui projects completed were guardrail and shoulder improvements at Haleakala Highway from Haliimaile Road to Kula Highway and Kahekili Highway at the Waihee Bridge and approaches; repairs and maintenance on Haleakala Crater Road and Hana Highway; drainage improvements on Hana Highway in the vicinity of Paia to Kuau, Kaahumanu Avenue from South Wakea Avenue to Kahului Beach Road and Hana Highway from Hobron Avenue to Dairy Road; and resurfacing on Main Street from Central Avenue to Kaahumanu Avenue, Kaahumanu Avenue from Main Street to Hobron Avenue and on Molokai, Kamehameha V Highway from Kamalo to Pukoo.

Projects intended to improve traffic flow on state highways were the widening (to four lanes) of Honoapiilani Highway between Maalaea and North Kihei Road; Mokulele Highway Phase 2A, between Kuihelani Highway to Cane Haul Road; Kuihelani Highway between Honoapiilani Highway and Puunene Avenue; and Haleakala Highway between Hana Highway and North Fire Break Road.

Other projects included the replacement of Uaoa Stream Bridge and Kaipakalua Bridge on Hana Highway; guardrail and shoulder improvement projects on Hana Highway from Dairy Road to the vicinity of Paia Town, Piilani Highway from Mokulele Highway to Wailea Ike Drive and Honoapiilani Highway from High Street to Puamana; and repair and maintenance on Kula Highway at various locations.

The design and construction of Puunene Avenue and Mokulele Highway widening from two to four lanes from Kuihelani Highway to Piilani Highway continued during FY 2003. The project is being constructed in five phases. Phase 2A, Kuihelani Highway to Cane Haul Road, was under construction during the fiscal year and Phase 2B, Cane Haul Road to Maui Humane Society, commenced shortly after. Design for Phase 1C, Maui Humane Society to Vicinity of Kolaloa Bridge, is completed and awaiting Federal Highway Ad-





ministration concurrence. Bidding is scheduled in 2004. Design for Phase IB, Vicinity of Kolaloa Bridge to Vicinity of Kealia Pond Driveway, was completed and bidding is also scheduled for 2004. Design for Phase IA, Vicinity of Kealia Pond Driveway to Piilani Highway, was 80 percent complete at the end of the fiscal year with land acquisitions and tenant relocations ongoing. Bidding is scheduled for the fall of 2004.

The contra-flow operation on Haleakala Highway continued and provided relief to motorists from Upcountry to Kahului and Wailuku during the morning and afternoon peak traffic periods. Construction for the first phase of the Haleakala Highway widening between Hana Highway and North Fire Break Road started. Upon the completion of the project, afternoon contra-flow was to be discontinued. Construction of the second phase is expected to begin in early 2005 and be completed in early 2006, at which time morning contra-flow will be discontinued.

The Record of Decision on the Final Environmental Impact Statement for the Lahaina Bypass was signed and approved by the Federal Highways Administration on October 14, 2003. With this approval, the project proceeded to the design phase. The first phase, Lahainaluna Road to Keawe Street Extension will be constructed as a Design/Build contract in late 2004.

In Paia, the Maui District is studying ways to improve traffic flow on Hana Highway. An interim improvement to provide an alternative route for right turning traffic from Hana Highway onto Baldwin Avenue was put to bid in late 2003. The alternative route will be used on weekdays during afternoon peak traffic hours and is a cooperative effort between the State, Maui County and Alexander & Baldwin Inc.

The Final Environmental Impact Statement and Record of Decision were completed for the Kihei-Upcountry Maui Highway project. The project is now in design.

The design of the Hana Highway Rockfall Mitigation project continued. This project will address two potential rockfall areas on Route 360, Hana Highway and bidding is scheduled for 2004.

### **Molokai District**

On the Island of Molokai, bids for the Kamehameha V Highway, Emergency Replacement of Kawaikapu Bridge, were opened.

### **Kauai District**

Drainage improvement projects completed or in progress during this period include Kuhio Highway at Kapaa and Anahola; Kaumualii Highway at MP 22; and locations on Waimea Canyon Drive and Kuhio Highway.

Improvements were completed on the Kuhio Highway, Kalihawai Road and Kuhio Highway/South Leho Drive intersections.

Completed pavement resurfacing and rehabilitation projects included Waapa Road/Rice Street; Nawiliwili Road from Kaumualii Highway to Waapa Road; Kaumualii Highway from Omao to Koloa Road; Kaumualii Highway from Huleia Stream Bridge to Maluhia Road; and Kuhio Highway from Hanamaulu to Wailua Bridge.

Work to remove, replace and/or repair bridge metal members at the Hanalei and Wailua Plantation bridges was completed. Major bridge widening work, intersection improvements, and

bridge rehabilitation work was completed for Waikaea Bridge on Kuhio Highway.

Kaumualii Highway improvements at Koloa Road, including the widening of Lawai Stream bridge, continue.

Work on the new \$8 million Centralized District Office and Baseyard also continued during this period.

During the fiscal year, the "Kapaa Temporary Bypass" and the "Puhi Temporary Bypass" routes and contra-flow operations between Hanamaulu and Wailua continued to relieve traffic congestion in their respective areas. The "Kapaa Temporary Bypass" was currently opened on a 24-hour basis to better serve the needs of the motoring public. The extension of

the temporary bypass from Olehana Road to Kuhio Highway was under design during the year, with bidding scheduled for 2004.

Consultants were engaged to complete a study evaluating the traffic circulation in the Waipouli-Kapaa area and suggesting interim congestion-alleviating improvements. The permanent Kapaa Bypass and the Kaumualii Highway widening projects will provide long-term assistance with Kauai's congestion problems. The first phase for the widening of Kaumualii Highway, from Lihue to Kipu, is currently in design.

A consultant was also retained to study Kuhio Highway, Route 560 to develop a comprehensive roadway plan for the Hanalei area. This study will serve as a guide for future improvements in the district.

## Office of Civil Rights

Under the Office of the DOT Director, the Office of Civil Rights (OCR) was established on July 23, 2001. It is the focal point for civil rights compliance activities and functions conducted through the Airports (AIR), Harbors (HAR) and Highways (HWY) divisional programs and staff offices statewide.

The OCR consists of the following programs: Americans with Disabilities Act (ADA), Disadvantaged Business Enterprise (DBE), Equal Employment Opportunity/Affirmative Action (EEO/AA) and Title VI. The primary function of the OCR is to assure that the Department of Transportation (DOT) is in full compliance with federal and state laws that provide for nondiscrimination in employment, services and programs.

The ADA, DBE, EEO/AA and Title VI programs are unfunded federal mandates. The DOT is required to be in compliance with these civil rights programs as a condition for receiving continued federal funds from the United States Department of Transportation (USDOT). The federal funds are used in planning, design and construction contracts for the building and maintenance of DOT's airports, harbors and highways systems.

### **American With Disabilities Act**

The ADA program exists to ensure that the DOT is in full compliance with the ADA of 1990 (Public Law 101-336), which guarantees uninhibited accessibility to facilities and programs for persons with disabilities. The law states in part that, "No qualified individual with a disability shall, by reason of such disability, be excluded from participation in, be denied the benefits of, or be subjected to discrimination by a department, agency, special purpose district, or other instru-

mentality of a state or local government."

In June 1997 the DOT entered into a Consent Decree to settle a lawsuit brought against the DOT for non-compliance with the ADA. The Consent Decree stipulated that the work under the transition plan be completed no later than six years after the completion and adoption of the Transition Plan. It was amended in April 1998 to expand the scope from curb cut alterations to complete barrier removal for facilities and structures under the jurisdiction of the DOT. The Consent Decree was further amended in July 2001, to lower the compliance threshold from the removal of all architectural barriers to program accessibility.

The DOT conducted a self-evaluation and completed the Transition Plan that identified architectural barriers and provided for a timeline for the removal of the architectural barriers. Each Division — AIR, HAR and HWY — implemented projects to correct areas of non-compliance that were identified in the Transition Plan. While the projects are on-going and in various phases of completion, the DOT is working to meet the June 30, 2005 deadline.

### **Disadvantaged Business Enterprise**

The DBE Program exists to ensure that the DOT complies with Title 49, Code of Federal Regulations, Part 26 (49 CFR 26), and Title 19, Subtitle 1, Administration Chapter 2, "Participation in the Disadvantaged Business Enterprise Program." The DOT is committed to helping small businesses owned and controlled by socially and economically disadvantaged individuals, including minorities and women, to participate in con-

tracting opportunities. The purpose of the DBE program is to create a “level playing field” on which DBEs can compete fairly for USDOT-assisted contracts.

There were 29 newly certified firms and 64 firms that were re-certified as DBEs. Of the \$41,760,352 in federal funds that were part of contracts awarded by HWY, 43 DBEs participated in 13 projects and received \$3,272,702, or about 8 percent of the federal funds. Of the \$16,289,228 in federal funds that were awarded by AIR, 14 DBEs participated in five projects and received \$978,780 or about 6.01 percent of the federal funds. HAR did not receive federal financial assistance.

While there are approximately 330 certified DBEs throughout the State, only a small percentage of DBE firms participated in DOT projects. It is the goal of the DBE program to increase participation through outreach, training and education of DOT personnel, general contractors, sub-contractors, suppliers and manufacturers.

## **Title VI**

The Title VI program exists to ensure that the DOT and its sub-recipients of federal funding comply with the 1964 Civil Rights Act, the 1975 Age Discrimination Act, the 1987 Civil Rights Restoration Act, the 1994 Presidential Executive

Order on Environmental Justice and other related laws and regulations. The DOT’s Title VI Program is designed to ensure nondiscrimination in the DOT’s policies, programs and activities.

The Title VI is like the umbrella of other related laws and regulations that protects DOT program participants and beneficiaries against discrimination based on race, color or national origin. The DOT programs have proactive Title VI program components to ensure compliance with the law.

## **Equal Employment Opportunity/ Affirmative Action**

The EEO/AA program exists to ensure that the DOT complies with Title VII of the 1964 Civil Rights Act and related statutes, rules and regulations such as the Age Discrimination, Employment Act, HRS 378 and Title I of ADA. Title VII, as amended, prohibits employment discrimination on the basis of race, color, national origin, religion, reprisal or sex. Title VII was designed as a broad remedial measure, rather than a punitive statute, to remedy discrimination through conciliation and cooperation. Related laws and regulations also prohibit discrimination on the basis of a person’s sexual orientation, political affiliation, handicapped status, marital status, or arrest and criminal record.

The EEO/AA function was transferred to OCR in April 2003.

# Commission on Transportation

The Commission on Transportation, which serves as an advisor to the Director, is a communications conduit between the public and the Department of Transportation.

The Commissioners also chair public hearings for the Department.

**Kazu Hayashida**

*Chair, Oahu*

**Kirk Tanaka**

*Vice Chair, Hawaii*

**Willie Crozier III**

*Oahu*

**Lester Fushikoshi**

*Oahu*

**Harold Kageura**

*Kauai*

**James Pacopac**

*Oahu*

**John Romanowski**

*Hawaii*

**Stephen Smith**

*Maui*

**David Sproat**

*Kauai*

**Norman K. Tsuji**

*Hawaii*

**Jane N. Yamashiroya**

*Oahu*

# Airports Division

## Statements of Revenues, Expenses and Changes in Retained Earnings

Years Ended June 30		2003	2002	
Operating Revenues	Concession Fees	\$131,878,195	\$102,788,144	
	Aeronautical Rentals:			
	Nonexclusive Joint-Use Premise Charges	\$25,095,942	\$22,976,350	
	Exclusive Use Premise Charges	\$27,697,345	\$26,718,579	
	Nonaeronautical Rentals	\$9,568,167	\$9,047,527	
	Airport Landing Fees	\$34,579,691	\$14,565,475	
	Aviation Fuel Tax	\$2,854,123	\$3,322,490	
	Airports System Support Charges	\$896,109	\$391,640	
	Miscellaneous	\$4,401,178	\$3,084,605	
	<b>Total Operating Revenues</b>	<b>\$236,970,750</b>	<b>\$182,894,810</b>	
	Operating Expenses other than Depreciation	<b>Operating Expenses Other Than Depreciation</b>	<b>\$165,895,285</b>	<b>\$141,289,738</b>
		Salaries and Wages	\$53,584,000	\$47,847,638
		Other Personnel Services	\$39,732,886	\$36,677,734
Utilities		\$18,388,636	\$17,023,413	
Bad Debt Expense		\$12,793,352	\$520,902	
Special Maintenance		\$7,686,122	\$10,574,224	
Repairs and Maintenance		\$10,302,124	\$9,856,299	
State of Hawaii Surcharge on Gross Receipts		\$8,517,875	\$5,739,256	
Materials and Supplies		\$4,184,650	\$4,639,566	
Department of Transportation General Administration Expenses		\$3,577,238	\$3,351,720	
Insurance		\$2,816,609	\$2,089,694	
Claims and Benefits		\$1,428,934	\$1,243,186	
Communication		\$344,378	\$402,559	
Travel		\$269,264	\$307,742	
Disbursements Out of Major Maint., Renewal & Replacement Acct.		\$1,501,919	\$276,622	
Rent		\$270,159	\$244,877	
Dues and Subscriptions		\$171,606	\$130,238	
Printing & Advertising		\$28,043	\$18,206	
Freight & Delivery		\$12,811	\$12,432	
Miscellaneous		\$284,679	\$333,430	
Depreciation		\$78,204,779	\$84,729,799	
<b>Total Operating Expenses</b>		<b>\$244,100,064</b>	<b>\$226,019,537</b>	
Non-operating Revenues (Expenses)		<b>Operating Income (Loss)</b>	<b>(\$7,129,314)</b>	<b>(\$43,124,727)</b>
		Interest Income:		
		Cert. of Deposit, Repurchase Agreements & U.S. Gov't Securities	\$25,654,588	\$30,514,784
		Investments in Direct Financing Leases	\$2,997,441	\$3,063,478
		Interest Expense:		
	Revenue Bonds:			
	Airports System	(\$42,862,164)	(\$44,250,193)	
	Special Facility	(\$2,997,441)	(\$3,063,478)	
	General Obligation Bonds	(\$4,644)	(\$19,805)	
	Federal Operating Grants	\$3,088,120	\$4,949,039	
	Loss on Disposal of Capital Assets	\$2,122,601	(\$4,393,006)	
	Loss on Redemption of Bonds	(\$1,907,907)	(\$1,907,907)	
	Nonoperating Revenues (expenses) - Net	(\$13,909,406)	(\$15,107,088)	
	<b>Gain (loss) Before Capital Contributions &amp; Transfers</b>	<b>(\$21,038,720)</b>	<b>(\$58,231,815)</b>	
	<b>Capital Contributions &amp; Transfers</b>			
	Federal Capital Grants	\$22,536,388	\$15,406,845	
	Contributed Land		\$2,630,000	
	Transfer from Highways Division		\$17,103,058	
	<b>Total Capital Contributions &amp; Transfers</b>	<b>\$22,536,388</b>	<b>\$35,139,903</b>	
	<b>Increase (decrease) in Net Assets</b>	<b>\$1,497,668</b>	<b>(\$23,091,912)</b>	
<b>Total Net Assets, Beginning of Year</b>	<b>\$1,481,874,768</b>	<b>\$1,504,966,680</b>		
<b>Total Net Assets, End of Year</b>	<b>\$1,483,372,436</b>	<b>\$1,481,874,768</b>		

# Harbors Division

## Statements of Revenues, Expenses and Changes in Retained Earnings

Years Ended June 30	2003	2002
<b>Operating Revenues</b>		
Services	\$45,297,596	\$43,049,386
Rentals	\$24,195,148	\$21,994,528
Others	\$610,474	\$1,122,167
	\$70,103,818	\$66,166,081
<b>Operating Expenses Before Depreciation</b>		
Personal Services	\$10,630,145	\$9,453,202
Harbor Operations	\$14,084,110	\$2,049,259
Maintenance	\$6,350,229	\$4,491,761
State of Hawaii, Surcharge for Central Service Expenses	\$1,905,797	\$2,341,865
Fireboat Operations	\$1,308,058	\$1,605,257
General Administration	\$1,878,278	\$2,380,909
Department of Transportation, General Administration Expenses	\$962,692	\$1,011,208
	\$37,119,309	\$23,333,461
Income from Operations Before Depreciation	\$32,983,909	\$42,832,620
<b>Depreciation</b>	\$13,366,629	\$11,590,577
Income from Operations	\$19,617,280	\$31,242,043
<b>Nonoperating Income (expense)</b>		
Interest Income:		
Deposits in Investment Pool	\$3,965,819	\$4,706,731
Investment in Direct Financing Lease	\$1,076,979	\$1,076,103
Interest Expense (Note J):		
Revenue Bonds	(\$9,362,393)	(\$9,758,131)
Special Facility Revenue Bonds	(\$948,750)	(\$948,750)
General Obligation Bonds	(\$8,059)	(\$29,397)
Amortization of Bond Discount, Issue Costs & Loss on Refunding	(\$642,035)	(\$637,657)
Loss on Disposal of Harbor Facilities	(\$707,439)	(\$18,267)
Other, Net		\$181,135
	(\$6,625,878)	(\$5,428,233)
<b>Net Income</b>	\$12,991,402	\$25,813,810

# Highways Division

## Combines Statement Revenues, Expenditures and Changes in Fund Balance

### All Government Fund Types

Year ended June 30, 2003	State Highway Fund	Capital Projects Fund	Total *
<b>Revenues:</b>			
Intergovernmental Federal Grants-in-Aid	\$24,884,617	\$63,967,482	\$88,852,099
<b>Taxes and Fees:</b>			
Fuel Taxes	\$75,506,033		\$75,506,033
Vehicle Weight Tax	\$27,222,003		\$27,222,003
Vehicle Registration Fees	\$19,036,913		\$19,036,913
Interest Income	\$11,954,041		\$11,954,041
Others	\$43,203,119		\$43,203,119
<b>Total Revenues</b>	<b>\$201,806,726</b>	<b>\$63,967,482</b>	<b>\$265,774,208</b>
<b>Expenditures:</b>			
<b>Operating and Maintenance:</b>			
Oahu Highways and Services	\$40,760,112		\$40,760,112
Hawaii Highways and Services	\$16,265,244		\$16,265,244
Maui Highways and Services	\$8,844,509		\$8,844,509
Molokai Highways and Services	\$2,124,578		\$2,124,578
Lanai Highways and Services	\$743,591		\$743,591
Kauai Highways and Services	\$9,621,173		\$9,621,173
Motor Vehicle Safety Office	\$5,581,696		\$5,581,696
Administration	\$11,726,151		\$11,726,151
Debt Service	\$42,685,666		\$42,685,666
Surcharge for Central Services Expenses	\$5,416,464		\$5,416,464
Capital Projects		\$114,872,692	\$114,872,692
<b>Total Expenditures</b>	<b>\$143,769,184</b>	<b>\$114,872,692</b>	<b>\$258,641,876</b>
Excess (deficiency) of Revenues Over Expenditures Before Other Financial Sources (uses)	\$58,037,542	(\$50,905,210)	\$7,132,332
<b>Other Financial Sources (uses)</b>			
Operating Transfers In		\$30,758,006	\$30,758,006
Operating Transfers Out	(\$52,758,006)		(\$52,758,006)
<b>Total Other Financial</b>	<b>(\$52,758,006)</b>	<b>\$30,758,006</b>	<b>(\$22,000,000)</b>
Excess (deficiency) of Revenues and Other Financial Sources Over Expenditures and Other Financial (uses)	\$5,279,536	(\$20,147,204)	(\$14,867,668)
<b>Fund Balance in July 1, 2002</b>	<b>\$143,945,468</b>	<b>\$235,360,528</b>	<b>\$379,305,996</b>
<b>Fund Balance in June 30, 2003</b>	<b>\$149,225,004</b>	<b>\$215,213,324</b>	<b>\$364,438,328</b>
State Funded Highways Construction Program	\$32,872,609		

**\*Unaudited Memorandum Only**



# Projects Completed & In Progress FY 2002-2003

Project	Started	Completed	Costs	Description
Akaka Falls Road, Honomu Town to Akaka Falls.	May-03	Jan-04	\$1.3M	Resurfacing.
Akoni Pule Highway, Kohala Ranch to Kawaihae	Feb-00	Sep-03	\$2.3M	Guardrail & shoulder improvements.
Centralized District Office and Baseyard Complex.	Feb-02	Jan-04	\$8.0M	Construct office and baseyard.
Farrington Highway, Ala Hema Street to Piliokoe Bridge.	Dec-00	Sep-02	\$1.1M	Lighting improvements.
Farrington Highway, Waikele Road to Aniani Place.	Jun-02	Dec-03	\$385,800	Highway improvements.
Farrington Highway, Waiomea Street.	Apr-01	12/03	\$2.0M	Intersection improvements.
Fort Weaver Road, Laulaunui Street to Hanakahi Street	Jun-01	Dec-03	\$621,700	System installation.
Fort Weaver Road, North of Laulaunui Street to Vicinity of Hanakahi Street.	Apr-01	Apr-03	\$4.7M	Resurfacing.
Fort Weaver Road, Vicinity of Hanakahi Highway to Farrington Highway	Apr-99	Jan-03	\$1.1M	Landscaping.
Haleakala Crater Road, Various Locations on Route 378.	Feb-02	Aug-03	\$2.1M	Road repairs and maintenance.
Hana Highway, Dairy Road to Vicinity of Paia Town and Piilani Highway, Mokulele Highway to Wailea Ike Drive.	May-02	Dec-03	\$994,578	Guardrail and shoulder improvements.
Hana Highway, Hobron Avenue.	Jun-00	Jan-03	\$689,800	Intersection improvements.
Hana Highway, Kaupakulua Bridge and Approaches.	Aug-01	Jul-03	\$9.8M	Bridge replacement.
Hana Highway, Uaoa Bridge and Approaches	Oct-00	Oct-03	\$8.1M	Bridge replacement.
Hana Highway, Various Locations	Apr-01	Aug-03	\$835,851	Roadway repairs.
Hana Highway, Various Locations.	Nov-01	May-03	\$2.4M	Repairs and maintenance.
Hana Highway, Various Locations.	Dec-02	Jul-03	\$841,614	Repairs and maintenance.
Hana Highway, Vicinity of Paia to Kuau.	Apr-02	Aug-02	\$328,400	Drainage improvements.
Hauula Baseyard.	May-01	Nov-02	\$1.1M	Improvements.
Hawaii Belt Road, Various Bridges, Vicinity of Pepeekeo.	Jan-02	Sep-03	\$3.0M	Seismic retrofit.
Hawaii Belt Road, Auwaiakeakua and Popoo Bridges	Jun-00	Nov-02	\$3.7M	Bridge replacement.
Hawaii Belt Road, East of Ninole	Mar-00	Feb-03	\$3.8M	Seismic retrofit of various bridges.
Hawaii Belt Road, Kaala Bridge to Kaawalii Gulch	Oct-96	Oct-02	\$2.9M	Resurfacing.
Hawaii Belt Road, Kapue and Kolekole Bridges.	Dec-01	May-03	\$2.9M	Clean and paint steel members
Hawaii Belt Road, Keamuku to Puanahulu, M.P. 9.74 to M.P. 16.45.	Jun-02	Sep-03	\$1.9M	Resurfacing.
Hawaii Belt Road, Kupapaulua Bridge.	Jan-03	Sep-04	\$17.5M	Bridge widening.
Hawaii Belt Road, Pahokee Paheehee and Hakalau Bridges.	Dec-01	Sep-03	\$8.7M	Clean and paint steel members
Hawaii Belt Road, Various Locations, Hawaii.	Oct-01	Oct-02	\$379,398	Culvert repairs and renovations.
Hawaii Belt Road, Vicinity of Kahawailiili Bridge to East Paauiilo Bridge, M.P. 40.97 to M.P. 36.00.	Jun-02	Oct-03	\$1.6M	Resurfacing.
Hawaii Belt Road, Vicinity of Maulua Gulch, Lapahoe-hoe Gulch, and Kaawalii Gulch	Jan-01	Jul-02	\$408,393	Drainage improvements.
Hawaii Belt Road, Vicinity of Papaikou	Aug-00	Jul-03	\$2.8M	Seismic retrofit of various bridges.
Hawaii Belt Road, Vicinity of Waipunalei to Kilau Gulch	Apr-00	Nov-03	\$641,407	Resurfacing.
Highway Lighting at Various Locations	Oct-98	Dec-03	\$15.0M	Safety improvements.
Hilo Baseyard	Feb-01	Apr-03	\$1.2M	Improvements.

# Projects Completed & In Progress FY 2002-2003

Hilo Harbor	Feb-03	---	\$290,000	Provide Security Barriers
Hilo Harbor	Jul-02	Aug-03	\$96,000	Pile Repairs
Hilo Harbor	Jun-02	Jul-02	\$86,000	Pavement Repairs
Hilo Harbor	Aug-02	Nov-02	\$81,000	Demolish Boat House
Hilo Harbor & Kawaihae Harbor	Sep-03	---	\$282,000	Install Bullrails
Hilo Harbor, Pier 1	Jul-02	Aug-02	\$40,000	Repave Apron
Hilo Harbor, Pier 1&2 Sheds	Aug-02	May-03	\$98,000	Replace Rollup Doors
Hilo Harbor, RO/RO Pier	Aug-02	Apr-03	\$72,000	Replace Fender System
Hilo Int'l Airport, Terminal Roof Replacement	May-02	Feb-04	\$13.2M	Replacement of the terminal roof
Honoapiilani Highway Bypass, Kuialua Street and Hookahua Place.	Feb-02	Aug-03	\$149,700	Landscaping.
Honoapiilani Highway, High Street to Puamana	Jun-01	Mar-04	\$2.2M	Guardrail & shoulder improvements.
Honoapiilani Highway, Kaanapali towards Lahaina	Mar-01	Dec-03	\$937,070	Traffic signal modernization.
Honoapiilani Highway, Kahana Kai Bridge System Bed.	Feb-02	Oct-02	\$132,698	Bridge repairs.
Honoapiilani Highway, Kuihelani Highway to North Kihei Road	Jun-01	Dec-02	\$7.5M	Highway widening.
Honoapiilani Highway, M.P. 24.75.	Sep-02	Oct-02	\$221,150	Arch pipe repair.
Honoapiilani Highway, Maalea Road to North Kihei Road.	Oct-02	Oct-03	\$4.4M	Highway widening.
Honoapiilani Highway, Shaw Street to Maalea Harbor and Kekaulike Avenue Bikeway, Kula Highway to Haleakala Highway	Sep-99	Feb-03	\$495,200	Bikeway improvements.
Honokaa-Waipio Road Drainage Improvements at Kapulena Stream Culvert.	Jul-01	Nov-02	\$465,463	Drainage improvements.
Honolulu Harbor	Apr-03	---	\$340,000	Provide Security Barriers
Honolulu Harbor & Kalaeloa Barbers Pt Harbor	May-03	---	\$1.M	Install Bullrails
Honolulu Harbor Administration Building	Sep-02	Jan-03	\$52,000	Repaint Building Exterior
Honolulu Harbor at Pier 25-28	Jul-03	---	\$780,000	Bulkhead Repairs
Honolulu Harbor Piers 36-38	Mar-99	---	\$6.6M	DCFV pier improvements
Honolulu Harbor, Pier 2	Feb-02	Jul-02	\$143,000	Pile Repair
Honolulu Harbor, Pier 1	Jan-03	May-03	\$61,000	Replace Bollards
Honolulu Harbor, Pier 10/11 and 19	Jun-03	---	\$461,000	Security Surveillance System
Honolulu Harbor, Pier 11	Jun-03	---	\$97,000	Install Vehicle Barriers
Honolulu Harbor, Pier 11 Shed	Mar-02	Dec-02	\$178,000	Concrete Repairs at Ramp
Honolulu Harbor, Pier 11 Shed	Jul-03	---	\$68,000	Replace Water Line
Honolulu Harbor, Pier 13/14	Jun-03	---	\$41,000	Repair Roof Drains and Downspouts
Honolulu Harbor, Pier 19	Jan-02	---	\$4.3M	Construct Ferry Terminal
Honolulu Harbor, Pier 28-29	Feb-03	Mar-03	\$79,000	Replace Bollards
Honolulu Harbor, Pier 31-32 Shed	Jul-03	---	\$84,000	Replace Gutters
Honolulu Harbor, Pier 36-38 Multi-User Bldg.	Jan-03	---	\$3.9M	DCFV construction of building
Honolulu Harbor, Pier 39	May-03	Jun-03	\$39,000	Repair Hatches
Honolulu Harbor, Pier 40	Apr-03	Jun-03	\$82,000	Repair Pavement
Honolulu Harbor, Pier 51	Apr-02	Jul-02	\$189,000	Stevedore Driveway and Parking Lot
Honolulu Harbor, Pier 51	May-03	---	\$29,000	Repair Fencing Along SI Park Road
Honolulu Harbor, Pier 51-53	Feb-03	---	\$725,000	Pavement Repairs
Honolulu Harbor, Pier 51-53 Container Yard	Feb-01	Feb-03	\$700,000	Pavement Repairs
Honolulu Harbor, Pier 51A	Aug-03	---	\$476,000	Dredge Ewa End
Honolulu Harbor, Pier 52/53	Jun-02	Aug-02	\$91,000	Electrical Trench Repairs
Honolulu Harbor, Piers 31-33	Apr-02	Mar-03	\$205,000	Substructure Repairs
Honolulu Harbor, Piers 51-53	Dec-02	---	\$90,000	Relamp Floodlights
Honolulu Int'l Airport 3rd Level OST Roadway Strengthening	Apr-02	Mar-04	\$13.8M	Strengthen/improve 3rd level Oversea Terminal roadway

# Projects Completed & In Progress FY 2002-2003

Honolulu Int'l Airport Multi-Cultural Enhancements	May-99	Mar-03	\$2.4M	Theme enhancements
Honolulu Int'l Airport Perimeter Road	Jan-02	Jan-03	\$5.5M	Construct a perimeter road on the east end of the airport
Honolulu Int'l Airport Signage & Graphics, Phase IVA	Apr-02	Oct-02	\$1.5M	Install ways finding signs
Honolulu Int'l Airport Ticket Lobby Canopies	Dec-01	Apr-04	\$5.8M	Last phase of glass canopy construction fronting ticket lobbies
Honolulu Int'l Airport, Overseas Terminal Improvements,	Mar-01	Feb-03	\$4.5M	Improve the main terminal area of HNL and optimize revenue potential
Honolulu Int'l Airport, Overseas Terminal Improvements, Phase II	May-03	Dec-04	\$12.2M	Improve the main terminal area of HNL and optimize revenue potential
Honolulu Int'l Airport, Public Toilet and Custodial Support Facilities, Phase I	Nov-01	Jul-03	\$3.4M	Provide improvements for both public restrooms and custodial support facilities.
Interstate Route H-1, Kunia Interchange	Aug-98	Dec-03	\$14.4M	Interchange improvements.
Interstate Route H-1, Kunia Interchange to Waialeale Stream Bridge	Nov-99	Jul-02	\$3.7M	Resurfacing.
Interstate Route H-1, Lunalilo Off-Ramp, Makiki Viaduct and Palama Separation.	Aug-00	Oct-02	\$4.1M	Seismic retrofit.
Interstate Route H-1, Palailai Interchange to Halawa Interchange.	Mar-02	Dec-03	\$543,596.94	Emergency telephone installation.
Interstate Route H-1, Palailai Interchange.	Jan-02	Mar-04	\$5.7M	Interchange reconstruction.
Interstate Route H-1, Punahou Street	Apr-01	Dec-03	\$2.7M	Off-Ramp improvements.
Interstate Route H-1, Vicinity of Punchbowl Off Ramp to Kapiolani Interchange	Apr-00	Dec-03	\$23.4M	Resurfacing.
Interstate Route H-2, Leilehua Interchange to Waiawa Interchange	Jul-00	Dec-03	\$4.0M	Highway lighting installation.
Interstate Route H-2, Wahiawa Interchange Bridge No. 1 and Bridge No. 2.	Oct-01	Jan-03	\$154,459	Bridge improvements.
Interstate Route H-2, Waiawa Interchange to Wiliikina Drive.	Jan-02	Dec-03	\$427,200	Emergency telephone installation.
Interstate Route H-3, H-3 Finish	Jul-00	Nov-02	\$4.0M	Finishing work.
Interstate Route H-3, Halekou Interchange to Kaneohe Marine Corps Base, Hawaii	Jan-00	Dec-03	\$3.6M	Resurfacing.
Interstate Route H-3, Kailua Interchange.	Oct-02	Apr-03	\$391,057	Seismic retrofit.
Interstate Route H-3, Leeward Section.	Aug-97	Dec-03	\$48.3M	Finishing work.
Kaahumanu Avenue , S. Wakea Avenue to Kahului Beach Road and Hana Highway, Hobron Avenue to Dairy Road.	Apr-02	Nov-03	\$1.4M	Drainage improvements.
Kahekili Highway, Likelike Highway to Vicinity of Haiku Road	Jun-95	Jan-03	\$27.2M	Additional lanes, highway lighting replacement.
Kahului Harbor	Jul-03	---	\$125,000	Provide Security Barriers
Kahului Harbor	Sep-02	Dec-02	\$33,000	Replace Fence
Kahului Harbor, Pier 1	Apr-02	Aug-02	\$169,000	Substructure Repairs
Kahului Harbor, Pier 1A Shed	Jun-02	Sep-02	\$166,000	Replace Siding
Kahului Harbor, Pier 1C	May-01	Jul-03	\$8.8M	Extension to Pier
Kahului Harbor, Pier 2	Aug-02	Jun-03	\$220,000	Substructure Repairs
Kahului Harbor, Pier 2 Extension	May-03	---	\$310,000	Substructure Repairs
Kahului Harbor, Pier 3 Container Yard	Apr-03	---	\$2.7M	Reconstruct Container Yard
Kalae Highway, Maunaloa Highway to Kalaupapa Lookout Parking Lot.	Jan-02	10/03	\$1.3M	Guardrail and shoulder improvements.
Kalaeloa Airport Improvements	Mar-03	Nov-04	\$11.9M	Improvements required to convert the airport for civilian operations.
Kalaeloa Barbers Point Harbor	Mar-03	---	\$46,000	Remove Architectural Barriers
Kalaeloa Barbers Point Harbor, Pier 7, SY S-6	Nov-00	Aug-03	\$16.0M	Construct Pier and Storage Yard

# Projects Completed & In Progress FY 2002-2003

Kalaniana'ole Highway, Ainakoa Avenue to West Hind Drive. & Kalaniana'ole Highway, Ainakoa Avenue to Laukahi Street	Jul-00	Dec-03	\$3.1M	Resurfacing and water main installation.
Kalaniana'ole Highway, Analii Street.	Mar-01	Apr-03	\$188,442	Traffic signal installation.
Kalaniana'ole Highway, Makapuu.	Oct-03	Dec-03	\$1.3M	Rock scaling.
Kamehameha Highway, Acacia Road to Honomanu Street	Mar-00	Feb-03	\$1.0M	Pedestrian accessible route improvements.
Kamehameha Highway, Halawa Stream Bridge (Inbound)	Jun-02	Oct-04	\$7.2M	Bridge replacement.
Kamehameha Highway, Kalaniana'ole Avenue to Hilo Bayfront Highway.	May-02	Sep-03	\$362,300	Bikeway improvements.
Kamehameha Highway, Kamananui Road	Jul-02	Feb-03	\$147,547	Intersection improvements.
Kamehameha Highway, Kaneohe Bay Drive to Kahiko Street	Jul-00	Dec-03	\$192,700	Resurfacing.
Kamehameha Highway, Leilihua Golf Course Road	Dec-00	Dec-03	\$2.5M	Intersection improvements.
Kamehameha Highway, Mehelua Parkway to Kuahealani Avenue.	Sep-02	Dec-03	\$540,901	Sidewalk improvements.
Kamehameha Highway, Vicinity of Kahuku Hospital and Kii Bridge.	Nov-02	Mar-05	\$7.1M	Drainage improvements and bridge replacement.
Kamehameha Highway, Vicinity of Waihona Street.	Nov-01	Oct-02	\$489,800	Slope protection.
Kamehameha Highway, Waiahole Valley Road to Crouching Lion Inn.	Jan-03	Jan-05	\$9.3M	Resurfacing.
Kamehameha V Highway, Kamalo to Pukoo.	Aug-03	10/03	\$2.1M	Resurfacing.
Kanoelehua Avenue, Kamehameha Avenue to Kawaiilani Street	Aug-00	Jun-03	\$928,000	Traffic signal modernization.
Kanoelehua Avenue, Kea'au to Kamehameha Avenue	Feb-97	Dec-03	\$5.1M	Resurfacing.
Kapule Highway, Vicinity of Ahukini Road to Kuhio Highway	Jan-01	Jul-03	\$273,288	Miscellaneous improvements.
Kaumalapau Highway, Vicinity of Airport Road towards Miki Road.	Aug-03	12/03	\$481,583	Resurfacing
Kaumalapau Highway, Vicinity of Airport towards Lanae City.	Jul-03	12/03	\$488,931	Resurfacing
Kaumualii Highway, Koloa Road	May-01	Sep-03	\$4.7M	Intersection improvements.
Kaumualii Highway, Various Locations	Apr-01	Oct-02	\$524,600	Traffic signal modernization.
Kaumualii Highway, Various Locations.	Jun-02	Jan-03	\$2.3M	Guardrail and shoulder improvements.
Kaumualii Highway, Vicinity of Mahaikona Bridge to Waimea Canyon Drive.	Jul-03	Jul-03	\$1.2M	Resurfacing.
Kaumualii Highway, Vicinity of Maluhia Road to Omao Road.	May-02	Jan-03	\$1.4M	Resurfacing.
Kaumualii Highway, Vicinity of Omao Road to Koloa Road.	Apr-02	Jun-03	\$2.2M	Resurfacing.
Kaunakakai Harbor	Sep-02	Feb-03	\$120,000	Concrete Deck Repairs
Kaunakakai Harbor	May-03	Jul-03	\$78,000	Substructure Repairs
Kaunakakai Harbor & Kaumalapau Harbor	Feb-03	May-03	\$99,000	Install Bullrails
Kawaihae Harbor	Mar-03	---	\$100,000	Pile Repairs
Kawaihae Harbor	Mar-03	Jul-03	\$50,000	Repair Bridge Deck
Kawaihae Road, Vicinity of Kawaihae Harbor to Route 19 M.P. 1.90 to M.P. 3.47	Nov-00	Nov-02	\$746,500	Resurfacing.
Keahala Road, Kahekili Highway to Po'okela Street.	Aug-01	Dec-03	\$3.2M	Road widening.
Kea'au-Pahoa Road, Kea'au Town Section	Nov-98	Jul-02	\$10.7M	Construct bypass road.
Kea'au-Pahoa Road, Pahoa-Kapoho Road.	Jul-01	Jul-03	\$289,818	Install traffic signals.
Kea'au-Pahoa Road, Paradise Park Section.	Jul-01	Sep-03	\$6.4M	Road widening and resurfacing.
Kewalo Basin, Herringbone Pier	Mar-03	Mar-03	\$55,000	Repair Fenders
Kewalo Basin, Slips 105-118	Sep-02	Apr-03	\$300,000	Electrical Repairs

# Projects Completed & In Progress FY 2002-2003

Kohala Mountain Road, Ili Road to Kahua	Aug-99	Jul-02	\$1.1M	Resurfacing.
Kona Int'l Airport at Keahole, General Aviation Fuel Access Road	Mar-03	Oct-03	\$534,154	Provide a fuel access road to the lease lots only.
Kona Int'l Airport at Keahole, General Aviation Site Preparation	Apr-02	Oct-03	\$10.6M	Relocate of existing GA facilities for present and future GA demands
Kona Int'l Airport at Keahole, Ramp "K"	Jan-03	Oct-03	\$2.0M	Ramp "K" will accommodate the increasing operations on the southern portion of the airport
Kuamoo Road, Vicinity of UH Experimental Station to Vicinity of Hawaiiana Street.	Jun-02	Oct-02	\$430,071	Resurfacing.
Kuhio Highway Wailua River Plantation Bridge	Oct-02	Jun-03	\$2.1M	Replace and reconstruct pavement and structural supports.
Kuhio Highway, Hanalei Bridge.	May-02	Sep-03	\$1.9M	Remove/repair/replace metal members.
Kuhio Highway, Hardy Street to Kuene Road.	Apr-03	Nov-03	\$1.3M	Resurfacing.
Kuhio Highway, Kalihiwai Road.	Jun-02	Oct-02	\$1.6M	Intersection improvements.
Kuhio Highway, South Leho Drive.	Jan-03	Sep-03	\$788,000	Intersection improvements.
Kuhio Highway, Vicinity of Kapaa and Anahola.	Sep-02	Dec-02	\$138,200	Drainage improvements.
Kuhio Highway, Vicinity of Lumahai Bridge to Alealea Road	Apr-01	Jul-02	\$843,300	Resurfacing.
Kuhio Highway, Waiakaea Bridge	Sep-00	Feb-03	\$2.6M	Bridge widening.
Kula Highway, Various Locations.	Feb-03	9/03	\$2.5M	Repairs and maintenance.
Lihue Airport Maintenance Baseyard Improvements	Mar-02	Oct-03	\$1.6M	Construct a 3-bay storage facility and an extension
Lihue Gateway, Ahukini Road and Kapule Highway	Jun-00	Jun-02	\$5.4M	Gateway beautification.
Likelike Highway, Emmeline Place to Wilson Tunnel.	Sep-02	Jan-04	\$17.9M	Resurfacing.
Main Street, Central Avenue to Kaahumanu Avenue and Kaahumanu Avenue, Main Street to Hobron Avenue and Kaahumanu Avenue, High Street to Wharf Street	Apr-01	Feb-04	\$8.7M	Resurfacing and traffic signal modernization.
Mamalahoa Highway, Ford Crossing (Makakupu Bridge) and Kaalaala Stream Bridge.	Sep-01	Nov-03	\$8.5M	Emergency bridge replacement.
Mamalahoa Highway, Keaiwa Bridge	Mar-01	Nov-02	\$6.3M	Emergency bridge replacement
Mamalahoa Highway, Paauau Bridge at Kamani Street and Various Bridges.	Jul-02	Aug-03	\$6.7M	Emergency bridge replacement
Mamalahoa Highway, Vicinity of Kamakoa Bridge No. 1 to Keamoku, M.P. 4.68 to M.P. 9.74	Nov-99	Sep-03	\$1.0M	Resurfacing.
Maui District Baseyard,	Jul-02	Oct-03	\$191,368	Repair and maintenance of buildings and grounds.
Maui District Baseyard,	Jan-03	Dec-03	\$563,000	Repair and maintenance of buildings and grounds.
Maulua/Paheehee/Kapue/Pukihae Bridge	May-01	Jul-02	\$167,200	Bridge joint repairs.
Maunaloa Highway, Vicinity of Hoolehua.	Jun-03	Sep-03	\$248,323	Drainage improvements.
Moanalua Freeway, Route 78, MP 0.00 to MP 0.74 (Aiea IC to Route H201).	Nov-02	Dec-03	\$1.9M	Lighting improvements.
Mokapu Saddle Road, Vicinity of Mikiola Drive to Kahinani Place.	Mar-02	Dec-03	\$3.3M	Slope protection.
Molokai Baseyard.	May-03	Jun-04	\$2.5M	Construct maintenance building.
Nawiliwili Harbor	May-03	---	\$170,000	Provide Security Barriers
Nawiliwili Harbor	Jun-02	Jul-02	\$83,000	Repair Pavement
Nawiliwili Harbor	Mar-03	Jul-03	\$145,000	Relamp Floodlights
Nawiliwili Harbor & Port Allen Harbor	Apr-03	Jun-03	\$279,000	Install Bullrails
Nawiliwili Harbor, Pier 1	Sep-02	Nov-02	\$32,000	Replace Fender
Nawiliwili Harbor, Pier 2 Shed	Aug-02	Nov-02	\$93,000	Siding Repairs
Nawiliwili Road, Kaunualii Highway to Waapa Road.	Sep-01	Jan-03	\$1.3M	Resurfacing.

# Projects Completed & In Progress FY 2002-2003

Nimitz Highway, Keehi Interchange to Pacific Street.	Jun-03	Nov-03	\$1.1M	Improvements.
Nimitz Highway, Rodgers Blvd to Ahua Street.	Aug-00	Dec-03	\$3.5M	Resurfacing.
Nimitz Highway, Sand Island Access Road.	Feb-03	Dec-03	\$2.8M	Intersection improvements.
Nimitz Highway, Sumner Street to Queen Street.	Feb-03	Feb-04	\$14.4M	Rehabilitation and water system improvements.
Noise Attenuation Keaukaha Elementary, Hilo Int'l Airport	Dec-02	May-04	\$2.2M	Noise mitigation measures to minimize disruption to the children's learning activities.
Oahu District Warehouse Building	Jun-01	Dec-03	\$2.7M	Construct warehouse building.
Pali Highway and Interstate Route H-1.	Jan-02	Dec-03	\$623,772	Repair chain link fence and gates.
Pali Highway, School Street to Waokanaka Street.	Jan-03	Nov-03	\$397,925	Safety improvements.
Piilani Highway, Mokulele Highway to Kilohana Drive.	Aug-02	Jul-03	\$5.7M	Interim widening.
Puainako Street, Kilauea Avenue to Kanoiehua Avenue	Oct-00	Apr-04	\$1.3M	Improvements.
Puunene avenue, Kuihelani Highway to Hansen Road and Mokulele Highway, Hansen Road to Vicinity of Cane Haul Crossing.	Jul-02	Oct-03	\$9.2M	Highway widening.
Queen Kaahumanu Highway, Hapuna towards Kailua-Kona.	Jul-02	Nov-03	\$2.1M	Guardrail & shoulder improvements.
Queen Kaahumanu Highway, Hina-Lani Street	Apr-01	Jul-02	\$466,252	Traffic signal modernization.
Queen Kaahumanu Highway, Kaloko-Honokohau National Historic Park	Apr-01	Jul-02	\$523,880	Intersection improvements.
Queen Kaahumanu Highway, Vicinity of Mauna Kea Beach Hotel.	Jun-02	Feb-03	\$598,943	Drainage improvements.
Queen kaahumanu Highway, Waikoloa road and Waikoloa Beach Drive.	Oct-03	Oct-03	\$1.7M	Traffic operational improvements.
Sand Island Access Road, Road No. 2.	Nov-03	Nov-03	\$413,727	Intersection improvements.
Statewide Architectural Barrier Removal, Phase II, Part B	Jun-01	Feb-02	\$947,476	Provide ADA access at Molokai, Kona, and Hilo Int'l Airport
Statewide Architectural Barrier Removal, Phase III, Honolulu International Airport	Jan-04	May-05	\$9.9M	Provide ADA access at HNL main terminal and three concourses
Statewide Architectural Barrier Removal, Phase III, Island of Hawaii	Apr-02	Nov-03	\$366,610	Provide ADA access at Upolu, Waimea-Kohala, Kona and Hilo Int'l Airports
Statewide Architectural Barrier Removal, Phase III, Island of Kauai	Jan-02	Feb-03	\$87,560	Provide ADA access at Kalaupapa Airport
Statewide Architectural Barrier Removal, Phase III, Island of Lanai	Jul-02	Feb-03	\$164,360	Provide ADA access at Lanai Airport
Statewide Architectural Barrier Removal, Phase III, Island of Maui	Mar-02	Jun-03	\$4.0M	Provide ADA access at Hana, Kahului and Kapalua Airports
Statewide Architectural Barrier Removal, Phase III, Island of Molokai	Jul-02	Dec-02	\$76,460	Provide ADA access at Kalaupapa Airport
Statewide Architectural Barrier Removal, Phase III, Island of Oahu	Apr-03	May-04	\$1.9M	Provide ADA access at Dillingham Airfield, Kalaeloa Airport and HNL
Street Lights at Various Locations	Mar-01	Dec-03	\$277,118	Install street lights.
Traffic Signal Modernization	Jun-02	Dec-03	\$1.8 M	Traffic signal modernization at various locations
Various Locations, Hawaii	Feb-02	Jul-03	\$ 133,357	Install warning lights.
Volcano Road, Hawaii Volcanoes National Park Main Entrance.	Oct-01	Oct-02	\$212,615	Intersection improvements.
Volcano Road, Vicinity of Mountain View School.	Oct-02	Mar-03	\$458,701	Resurfacing.
Waapa Road/Rice Street.	Aug-01	Jan-03	\$1.2M	Resurfacing.
Waialae Avenue, Kealaolu Avenue to Kalaniana'ole Highway and 17th Avenue to 21st Avenue.	Sep-01	Nov-03	\$1.1M	Shoulder improvements for bicycle lanes.

## Projects Completed & In Progress FY 2002-2003

Waikiki Aquarium.	Apr-02	Jul-03	\$383,061	Repair pedestrian walkway.
Waimea Canyon Drive, Vicinity of Kokee Road Inter-section.	Jul-03	Nov-02	\$578,910	Resurfacing.
Waimea Canyon Drive, Vicinity of MP 0.0 to 1.0 and Kuhio Highway, Vicinity of Kalihiwai.	Dec-01	Sep-02	\$318,331	Drainage improvements.
Wilikina Drive, Kamananui Road	Mar-00	Nov-02	\$1.2M	Intersection improvements.
Wilikina Drive, McNair Gate Schofield Barracks.	Aug-03	Feb-04	\$858,800	Intersection improvements.
Wilson Tunnel	Apr-01	Feb-03	\$1.5M	Improvements.