

Kamehameha Highway Improvements Lanikuhana Avenue to Ka Uka Boulevard

State Department of Transportation
Project No. NH-099-1(26)

Environmental Assessment Comments and Section 106 NHPA Consultation

March 2014

Mililani Middle School Cafeteria
95•1140 Lehiwa Drive, Mililani, HI 96789
5:30 pm – 8:00 pm



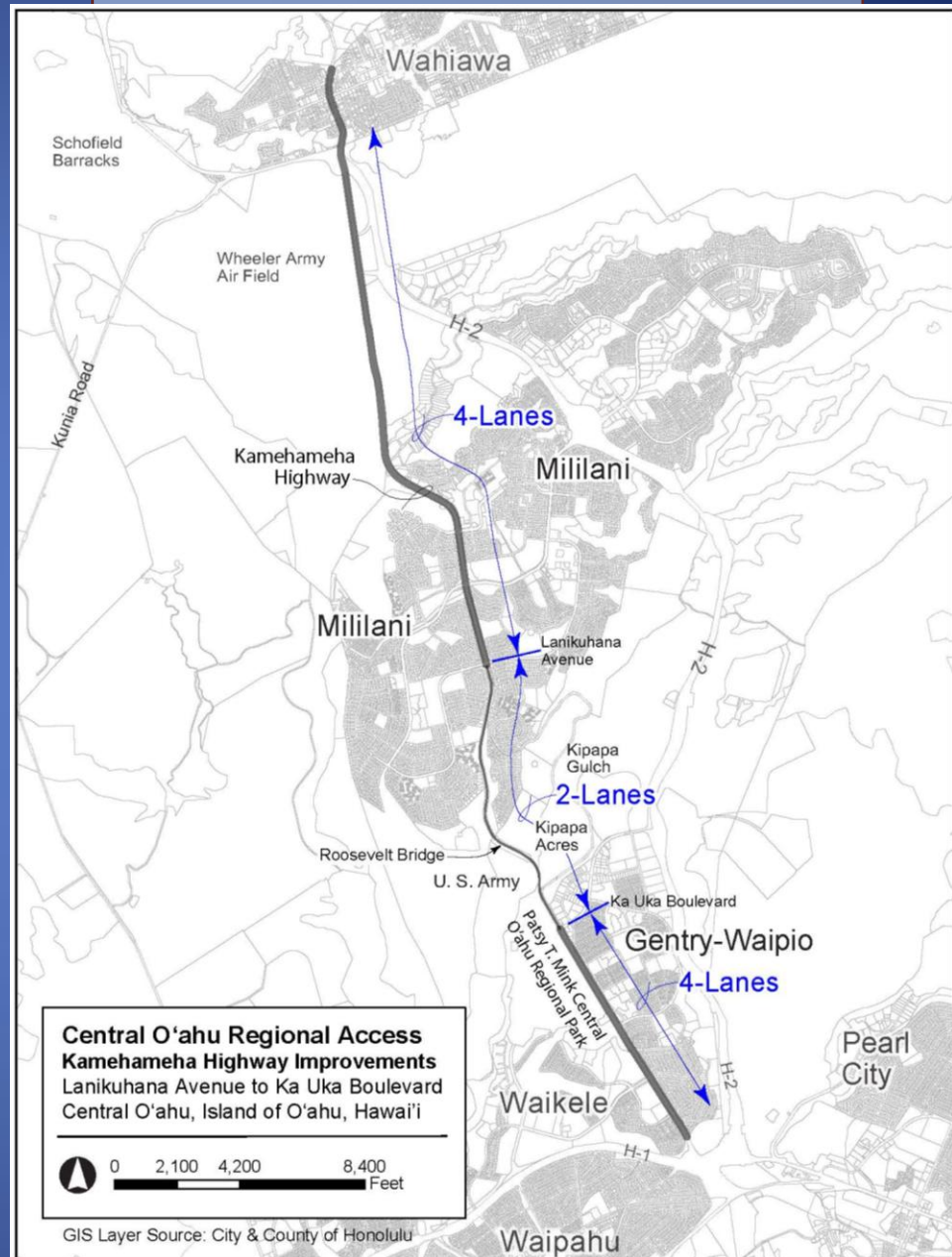
Purpose of tonight's meeting

- Explain why the proposed Kamehameha Highway Improvements Project is needed
- Receive comments for the preparation of the Environmental Assessment (EA) for the project
- Receive comments for Section 106, National Historic Preservation Act (NHPA), Consultation on effects to historic resources

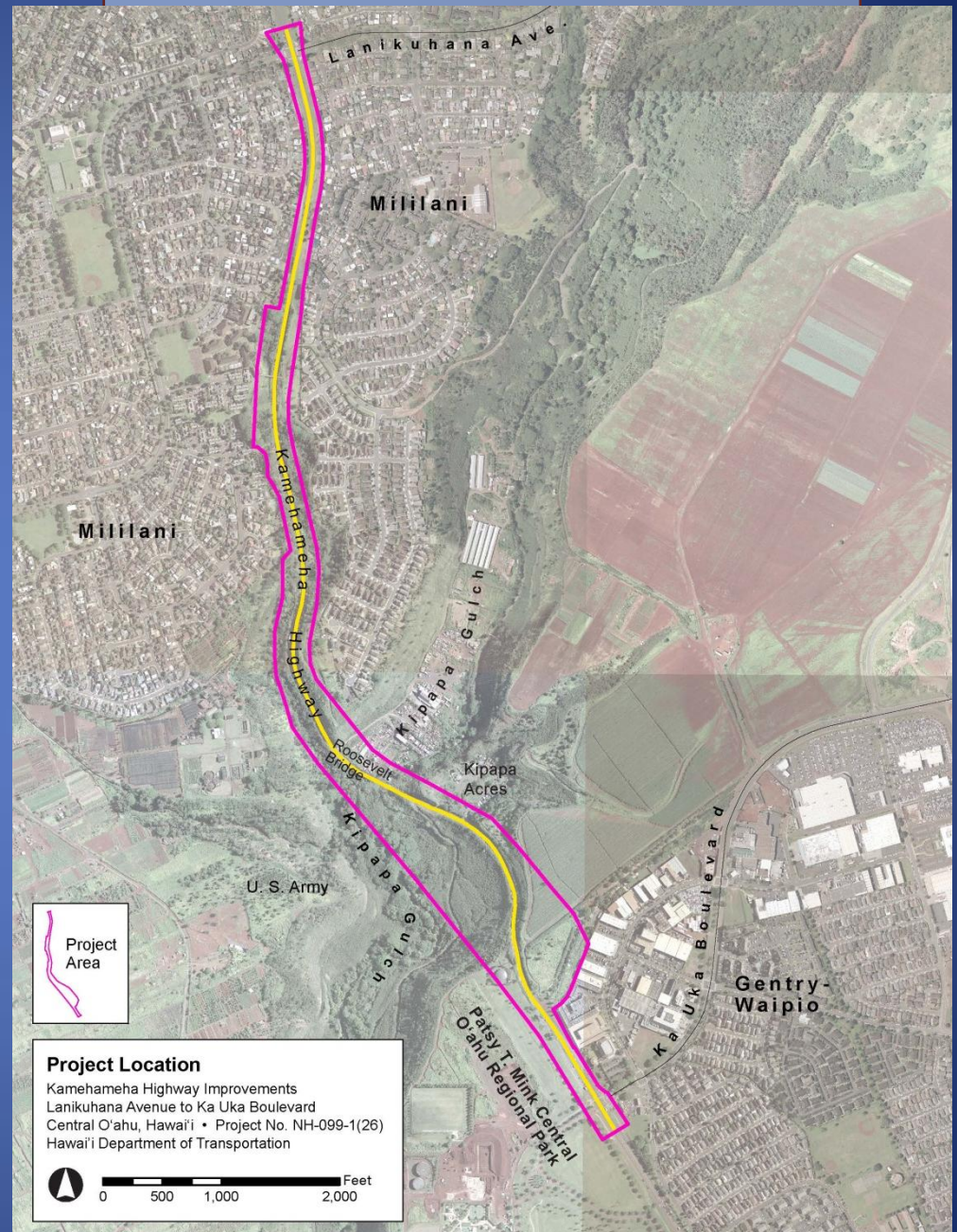
HDOT's mission

- Safe and efficient roadway connections:
 - Between regions on O'ahu
 - Between communities
 - Within communities

Regional/ Subregional access to Central O'ahu



Location of potential project site



What will HDOT accomplish with this proposed project?

- Improve regional and sub-regional highway connections
- Increase capacity
- Eliminate bottleneck along Kamehameha Highway
- Increase safety

Planning for roadway improvements

- Land use
- Plans and policies
- Community and stakeholder comment
- Environmental resources
- Benefits/costs
- Highway design



Highway design

- Maintain user access
- Avoid high-voltage electrical lines
- Minimize rock fall hazards
- Improve traffic conditions

Land use

- Avoid impacts to regional park
- Work with landowners adjacent to the project
- Coordinate with other projects



Consistency with plans and policies



Environmental considerations

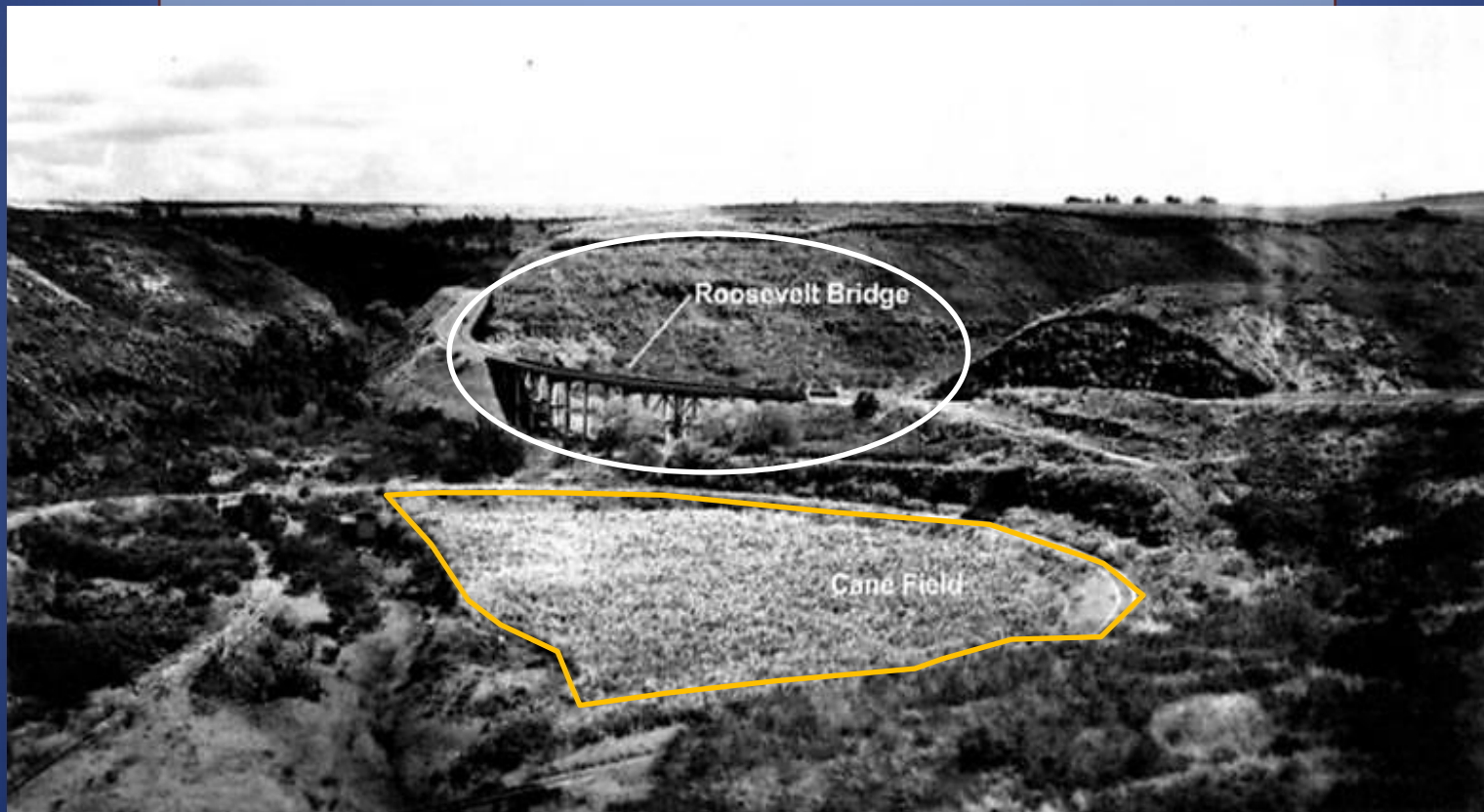
- Archaeological and historic
- Cultural
- Biological - plants, birds and mammals
- Scenic viewplanes
- Community and stakeholder comments

Environmental resources

- Archaeological and historic resources
- Surface waters
- Parklands

Plantation-era sugarcane

- Mid-1900s photograph of Roosevelt Bridge



Historic retaining walls

State Inventory of
Historic Places (SIHP)
#50-80-09-7052,
Historic Road
(retaining wall)



SIHP
#50-80-09-7745,
Retaining Wall



Plantation irrigation facilities

SIHP
#50-80-09-9530,
Feature A
Irrigation Ditch



SIHP
#50-80-09-6959,
Irrigation Ditch



Plantation roads

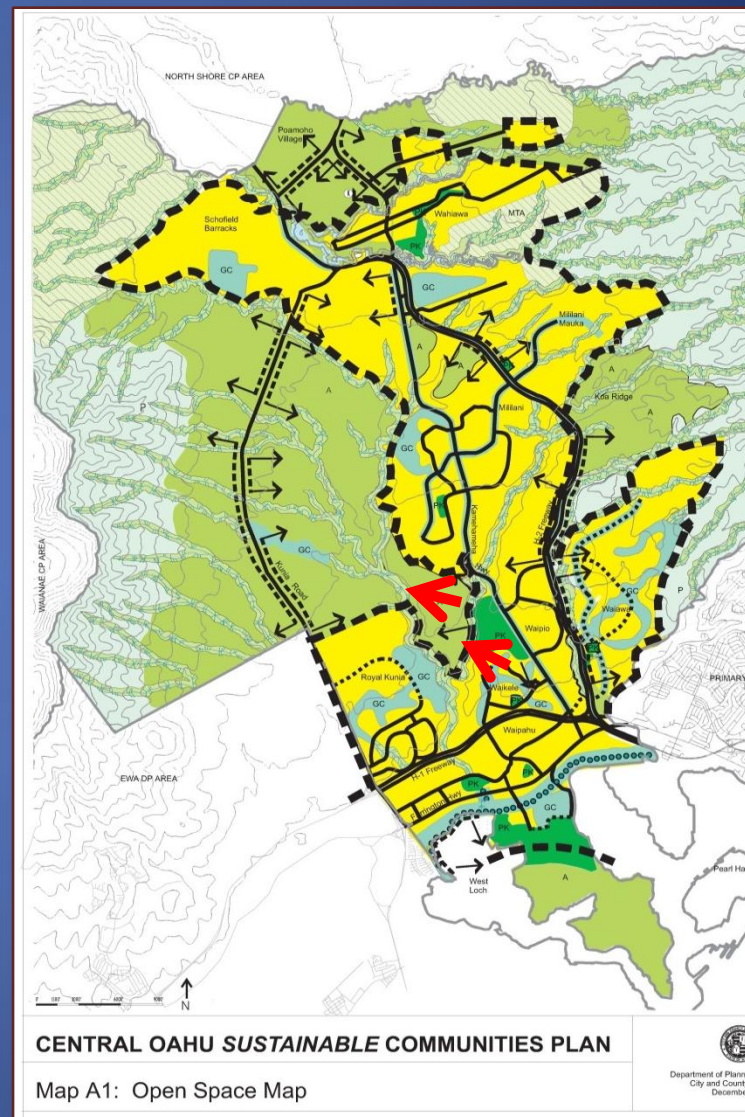
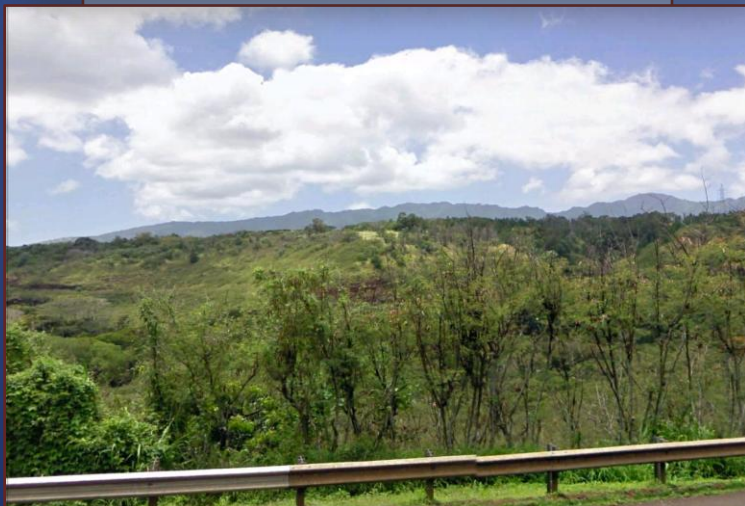
SIHP
#50-80-09-7745,
Stone-Paved
Road



Surface waters

- Biological study findings:
 - No wetlands in project area
 - No listed threatened or endangered species
 - No adverse effect to Kīpapa Stream, an interrupted, perennial stream
- Biological study result: “no environments of special concern”

Scenic viewplanes



What are the Alternatives that are being Considered?

- No Action or Delayed Action
- Four Design Alternatives
 - A – New Alignment with New Bridge
 - B – New Parallel Alignment Southbound
 - C – New Parallel Alignment Northbound
 - D – New Alignment Southbound

No Action or Delayed Action

- Required for EA process
- Do not meet the purpose and need of project
 - Improve connections
 - Increase capacity
 - Remove bottleneck
 - Increase safety

Alternative A

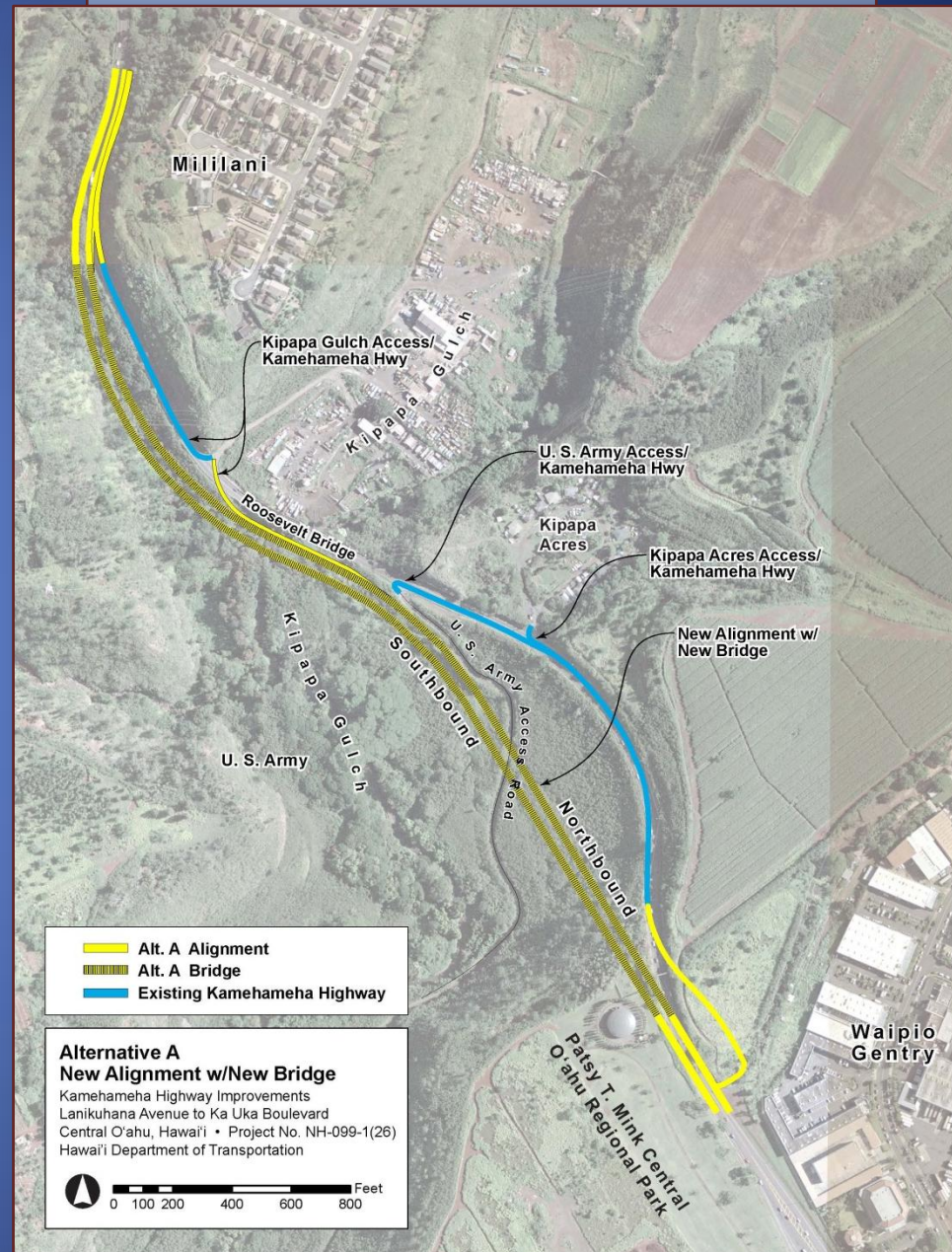
4 continuous lanes

New bridges

Access road

New highway
alignment

Avoids historic
resources



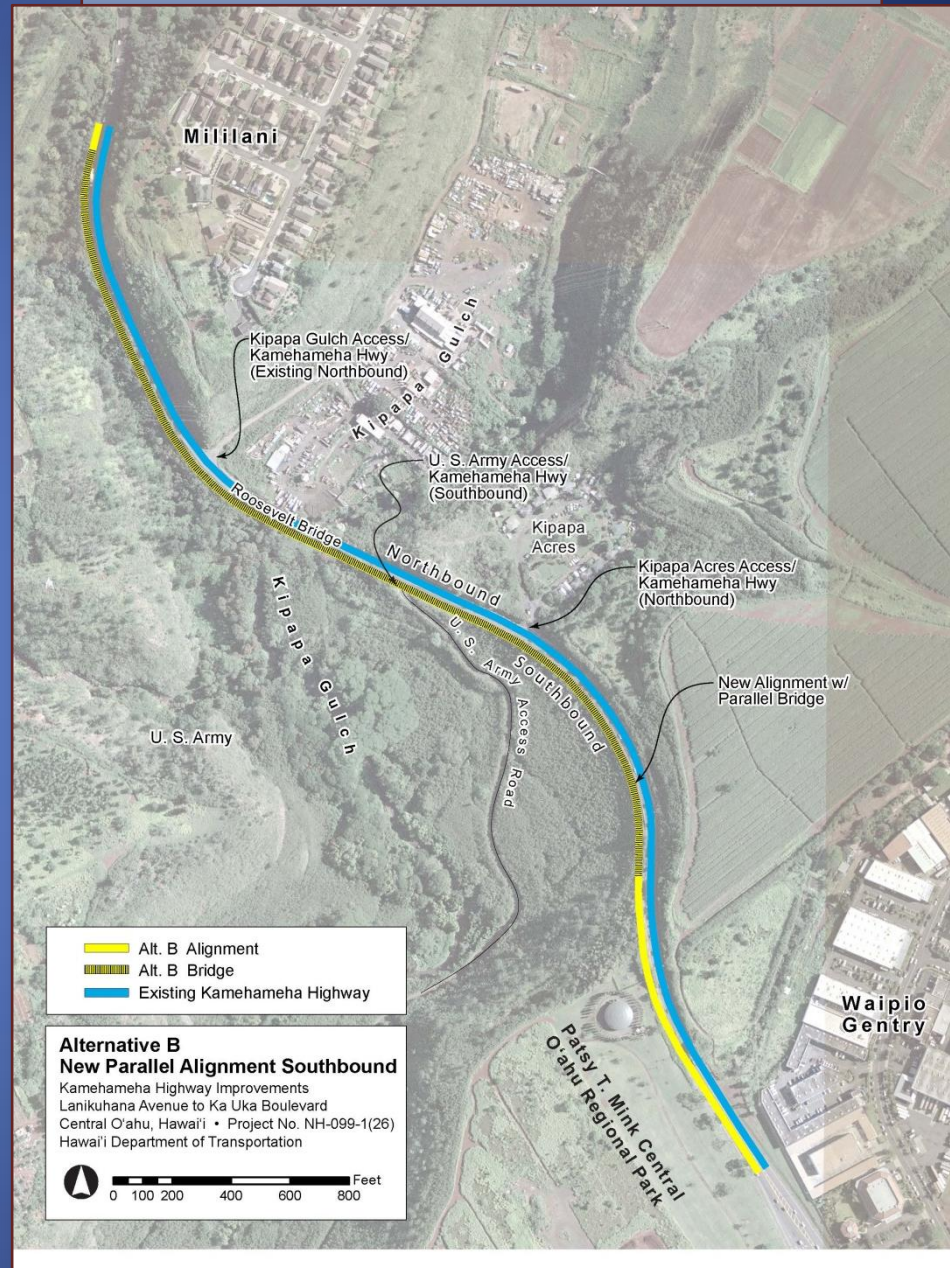
Alternative B

4 continuous lanes

Parallel bridge
southbound

Maintains existing
alignment for
northbound traffic

Avoids historic
resources



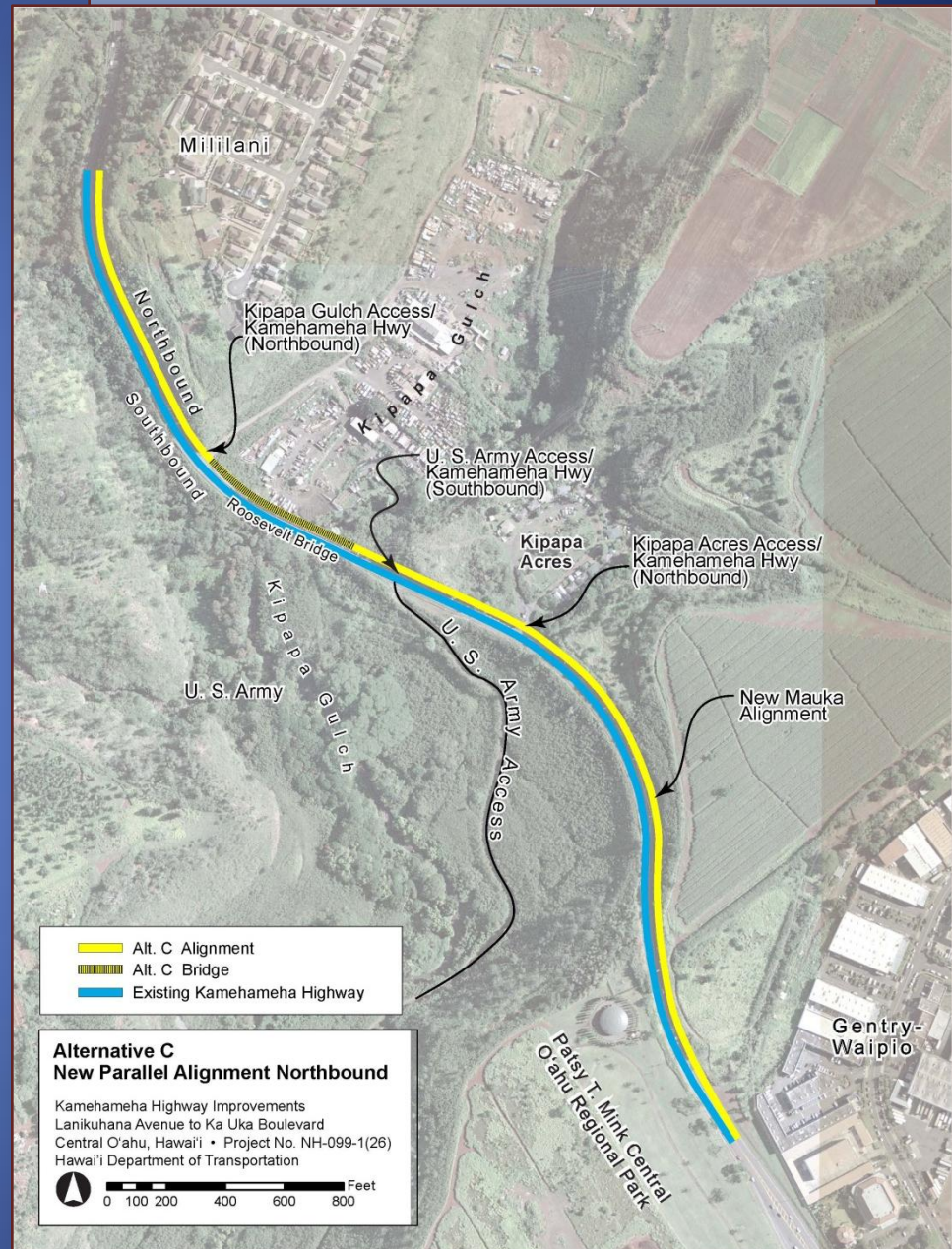
Alternative C

4 continuous lanes

Parallel bridge
northbound

Maintains existing
alignment for
southbound traffic

Mitigation of historic
resources



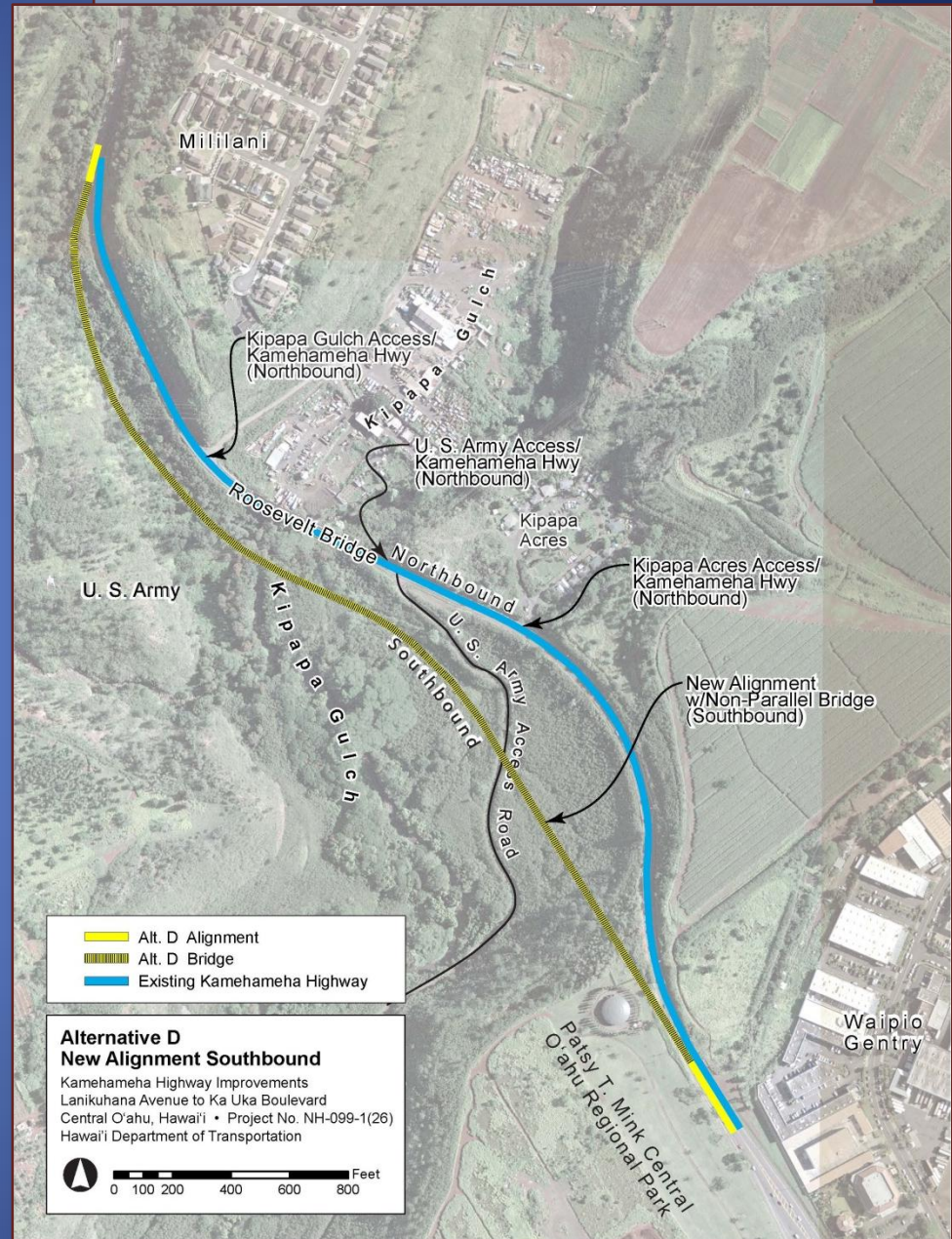
Alternative D

4 continuous lanes

New alignment and
new 2-lane bridge for
southbound traffic

Maintain existing
alignment for
northbound traffic

Avoids historic
resources



What outreach has been done?

- Meetings with landowners
 - Castle & Cooke Homes Hawai'i, Inc.
 - City and County of Honolulu, Dept. of Parks & Rec.
 - Kīpapa Acres
 - U. S. Army Garrison Hawai'i
 - Kīpapa Gulch landowners and users
- Community associations
 - Mililani Town Association
 - Gentry-Waipio Community Association
- Tonight's meeting

Summary of Questions Received to Date

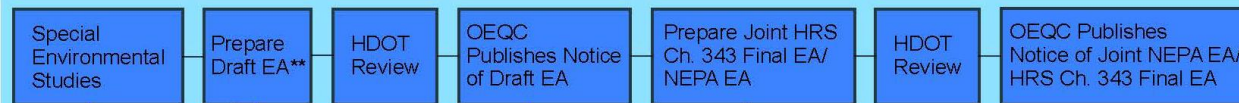
- *How do the alternatives affect landowners?; and what land will be required from us either during or after construction?*
- *When is the project intended to be built?*
- *How long will the project take?*
- *How will construction affect my commute?*

What are the Next Steps?

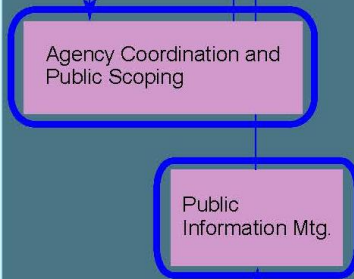
Environmental Review Process

National Environmental Policy Act and Hawaii Revised Statutes,
Chapter 343, Environmental Assessment

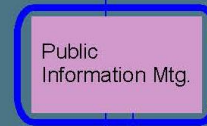
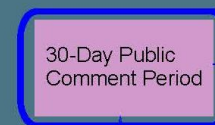
State: HRS Chapter 343 Track



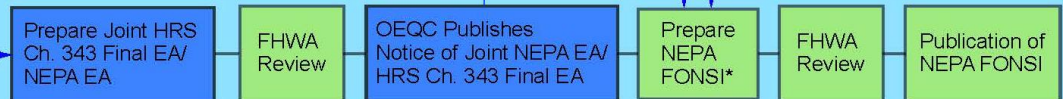
Public Involvement



Tonight's Meeting



Federal: NEPA Track



What are the next steps?

Project Schedule

1. HRS, Chapter 343, Draft EA – April 2014
2. HRS, Chapter 343, Final EA and Finding of No Significant Impact (FONSI) and NEPA EA – Summer 2014
3. NEPA FONSI – Fall 2014

Breakout Session for Community Comment

- Three areas are set up to receive comments
 - Allow your comments to be recorded
 - Please be courteous and allow others to speak
- Written comment forms available at sign-in table

Thank you for participating.

For further information, please contact
Brian Takeda, Planning Project Coordinator,
R. M. Towill Corporation, 842-1133, or

Dean Yanagisawa, P.E., Project Manager,
HDOT, 587-2623

If there is anyone present who wants to report
sensitive cultural information, please contact the
State Historic Preservation Division, 692-8015
and refer to this project.

