

New Day in Hawaii

STATE OF HAWAII
DEPARTMENT OF TRANSPORTATION
Director Glenn Okimoto
Governor's Cabinet In Your Community
HILO
July 19, 2013



Airports Division – Hilo International Airport
Access Control, CCTV System Upgrades



For illustration purposes only



For illustration purposes only

SCOPE – AH1052-03

Upgrade access control system (ACS) & video monitoring system (VMS). New ACS will be proximity card-based w/biometric capability for future TSA requirements. New VMS & ACS integration to provide greater camera coverage & functionality.

EST. TOTAL COST

\$2.7 Million

EST. SCHEDULE

Bid Date:
07/2013

Construction to Start 12/2013,
9 months duration.



Airports Division – Hilo International Airport
Airport Rescue and Fire Fighting (ARFF)
Facility Improvements



SCOPE – AH1031-14

Construct a new ARFF Station at Hilo International Airport.

EST. TOTAL COST

\$20 Million

EST. SCHEDULE

Bid Date:
09/2013

Construction to Start
01/2014,
Completion June 2015



Airports Division – Hilo International Airport Noise Attenuation, Keaukaha Subdivisiion, Phase II



SCOPE – AH1071-16

Sound-insulate houses within the 65 DNL contour within the Keaukaha Subdivision.

EST. TOTAL COST

\$2.3 Million

EST. SCHEDULE

Bid Date:

05/2014

Construction to Start
09/2014, 18 months
duration.



Harbors Division – Hilo Harbor

Pier 1 Shed Roofing and Siding Improvements and Modifications

SCOPE

Reroof approximately 60% of the south side of the Pier 1 shed inclusive of interior partition walls, upgrading utilities and hazardous material work.

EST. TOTAL COST

\$5.0 million

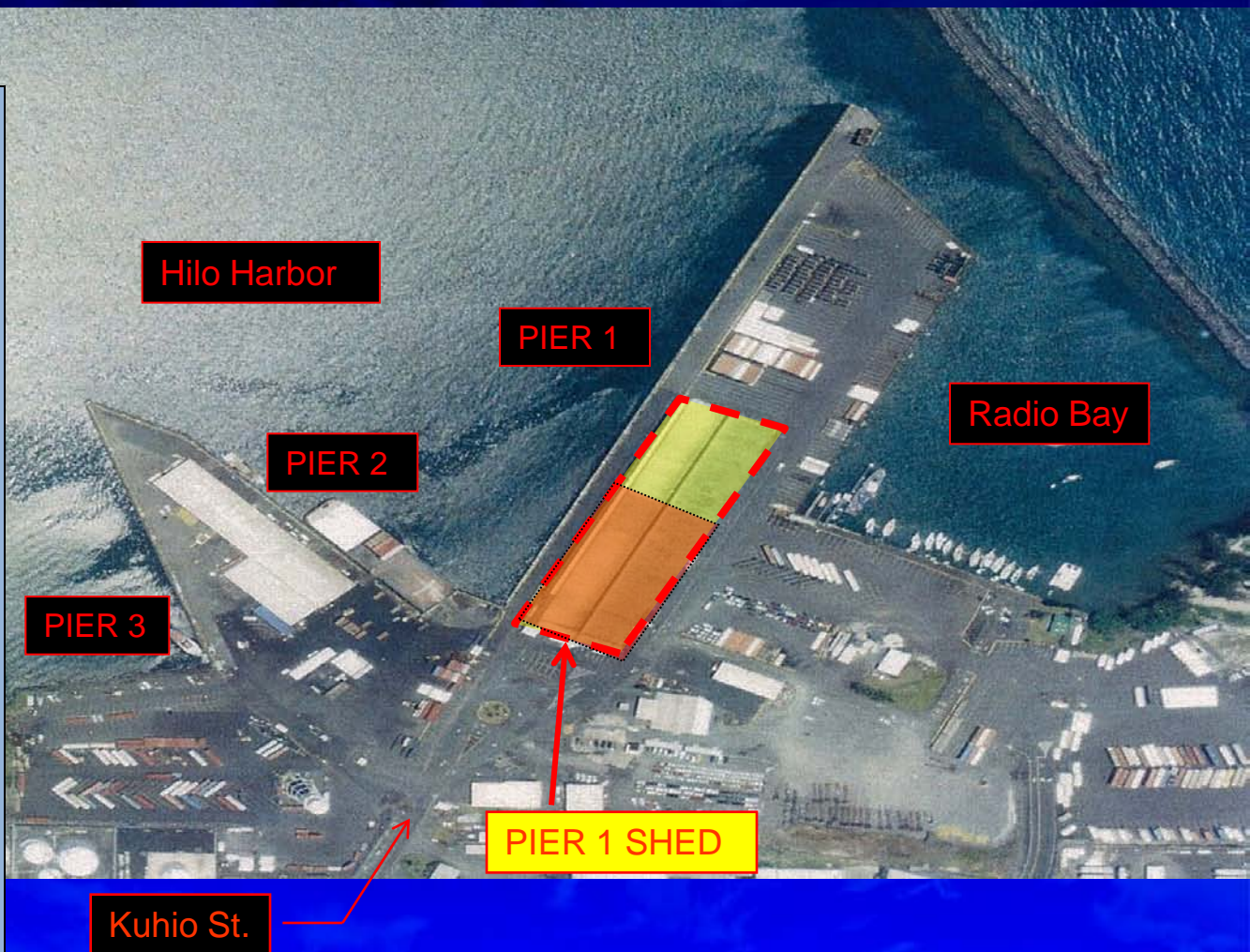
EST. SCHEDULE

NTP Issued:

August 21, 2012

Est. Completion Date:

June 2013





Harbors Division – Hilo Harbor

Surveillance of Waterside Threats and Critical Infrastructure at Hilo



HILO HARBOR, HAWAII

SCOPE

Project involves the design and installation of a surveillance system to monitor waterside threats.

EST. TOTAL COST

\$3.5 million (Statewide costs)

EST. SCHEDULE

Start Date:

February 4, 2013

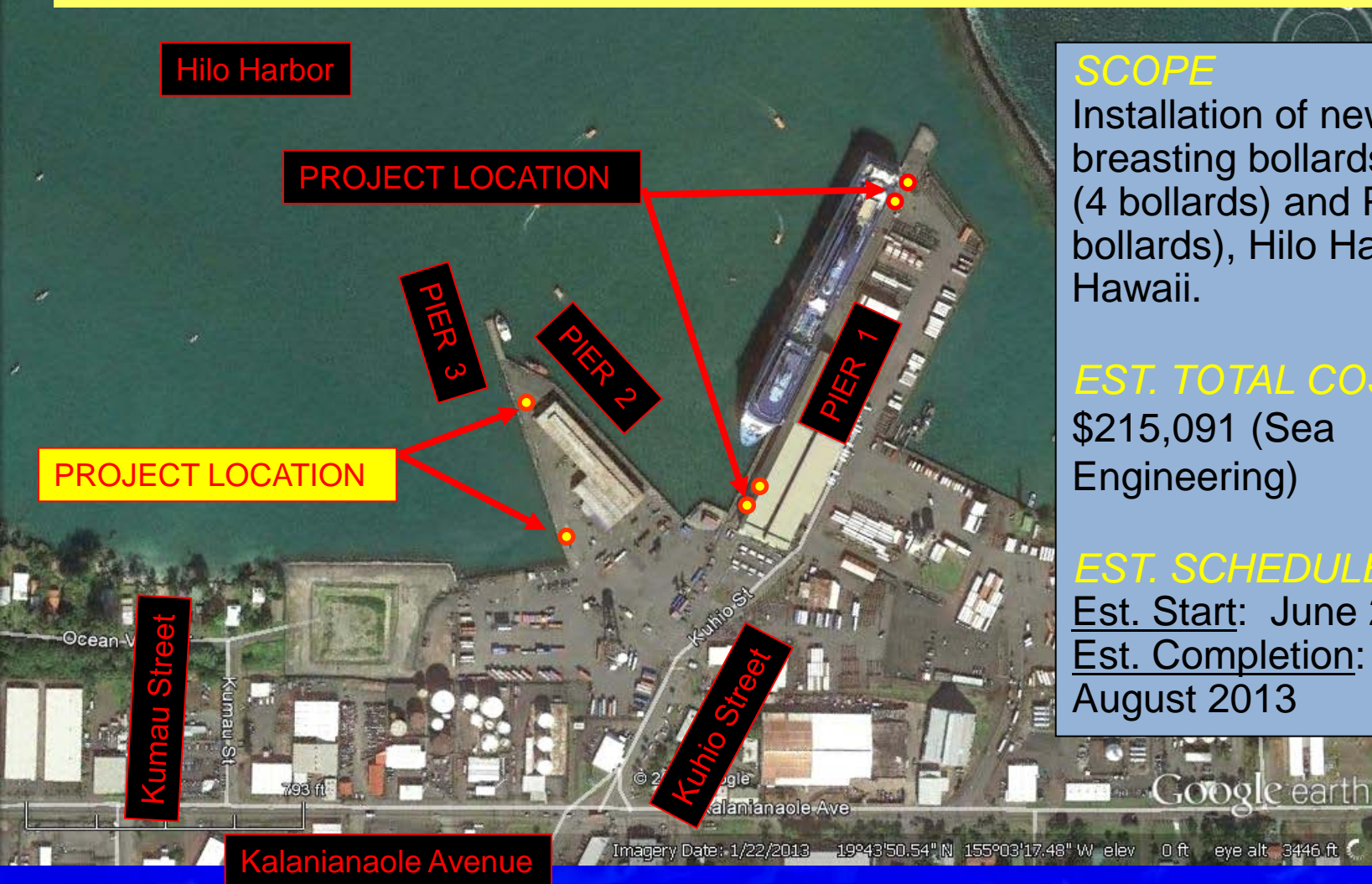
Est. Completion Date:

July 2013



Harbors Division – Hilo Harbor

Installation of Breasting Bollards at Piers 1 & 3



SCOPE

Installation of new 100T breasting bollards at Pier 1 (4 bollards) and Pier 3 (2 bollards), Hilo Harbor, Hawaii.

EST. TOTAL COST

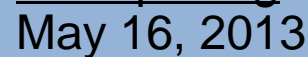
\$215,091 (Sea Engineering)

EST. SCHEDULE

Est. Start: June 2013
Est. Completion: August 2013



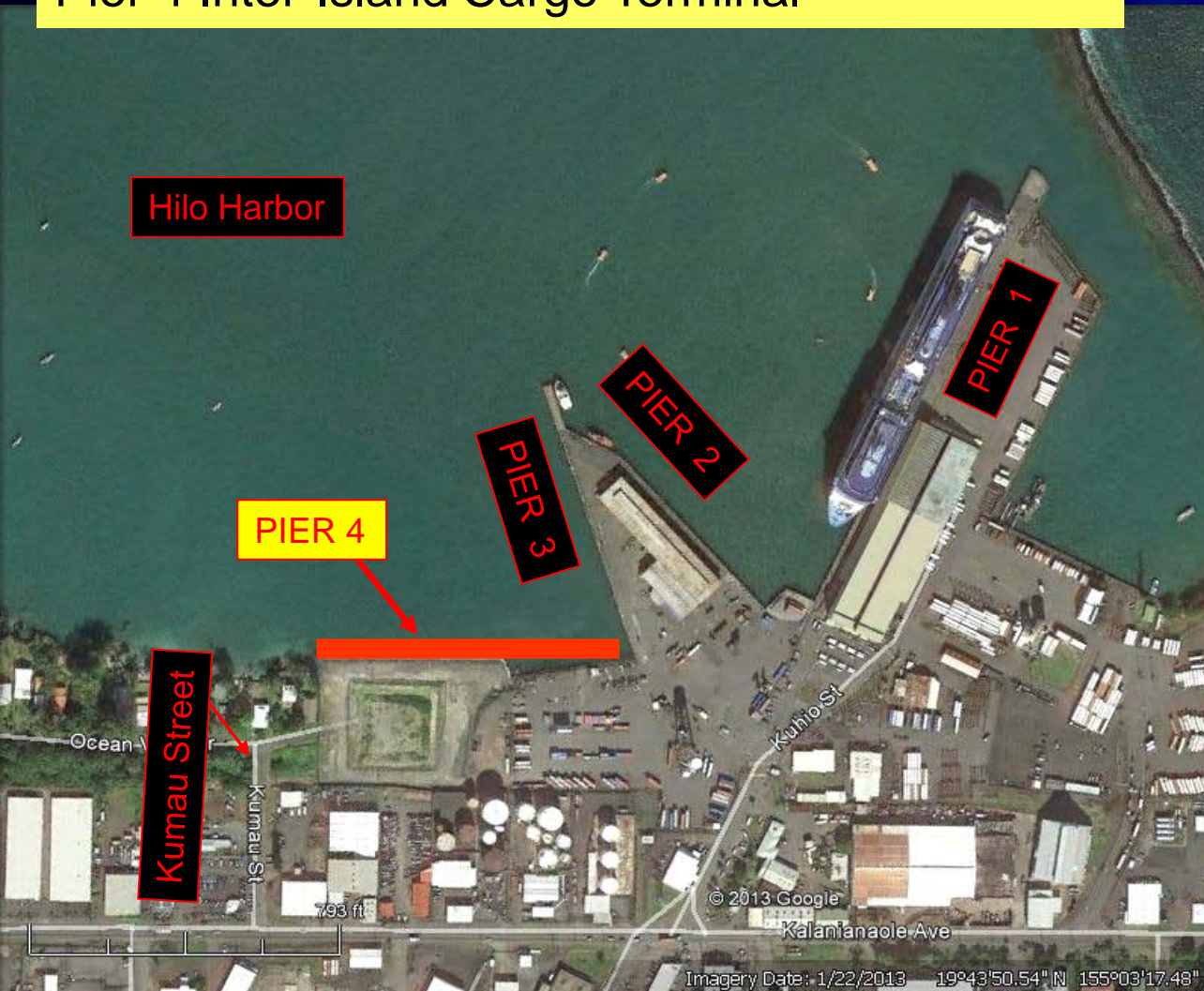
Kumau Street Entrance Improvements





Harbors Division – Hilo Harbor

Pier 4 Inter-Island Cargo Terminal



SCOPE

Design of a new 602 linear feet wharf, utilities, fender and mooring system and associated sitework. The construction of these improvements will complete the new inter-island barge terminal facility.

EST. TOTAL COST

\$42 million

EST. SCHEDULE

Start: January 2010

Design Completion: August 2013



Harbors Division – Hilo Harbor

Pier 1 Shed Modifications, Phase II

SCOPE

Demolish approximately 40% of the north side of the Pier 1 shed including associated utility work, upgrading the existing pavement that will be exposed, and hazardous material work.

EST. TOTAL COST

\$6.0 million

EST. SCHEDULE

Est. Start Date:

2014

Est. Completion Date:

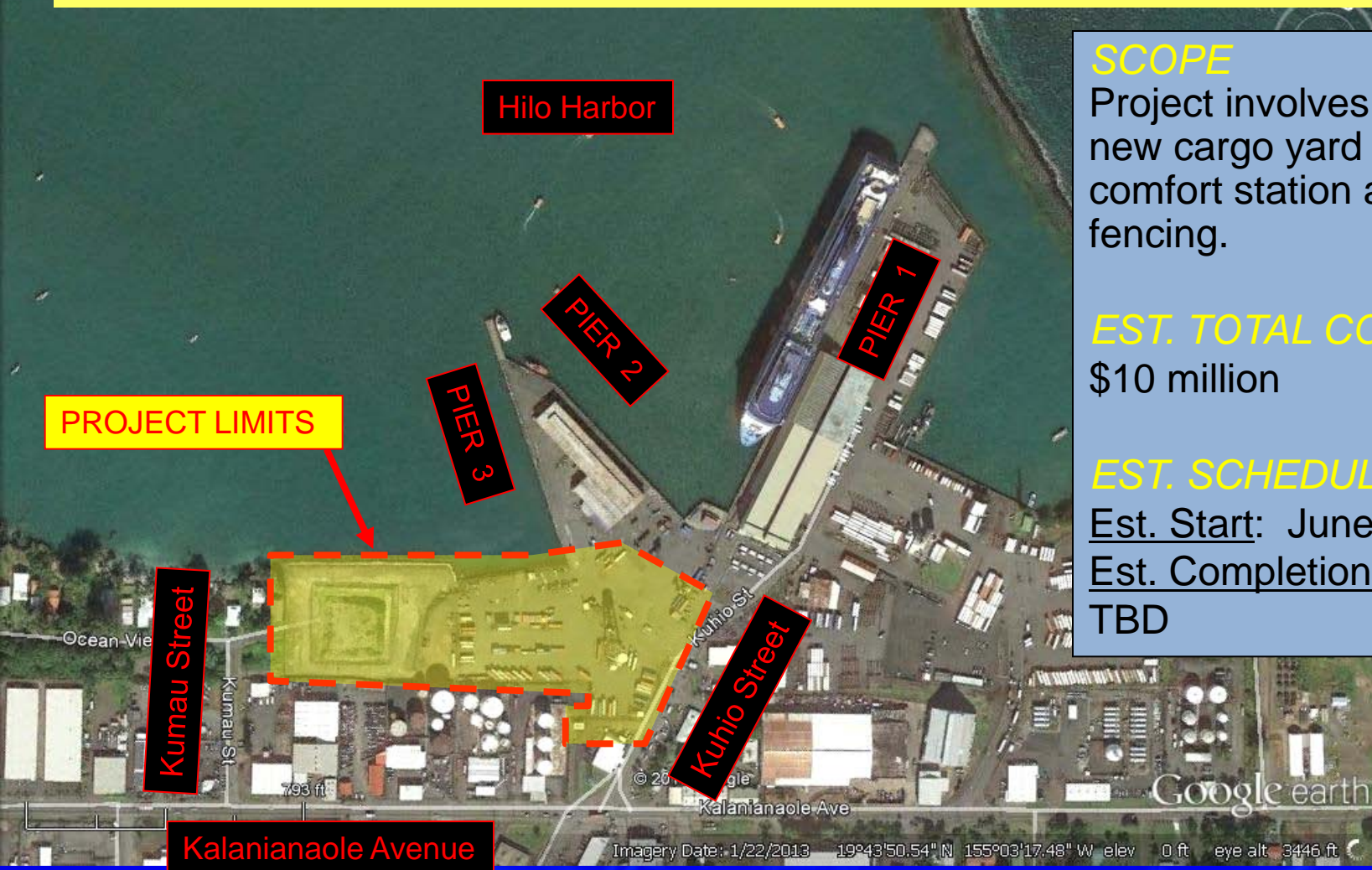
Fall 2014





Harbors Division – Hilo Harbor

Construction of Inter-Island Cargo Terminal Facility



SCOPE

Project involves constructing new cargo yard including comfort station and perimeter fencing.

EST. TOTAL COST

\$10 million

EST. SCHEDULE

Est. Start: June 2013

Est. Completion:
TBD



Highways Division
 Volcano Road Pavement Preventative Maintenance
 Inbound: Keaau Bypass to Panaewa Bridge



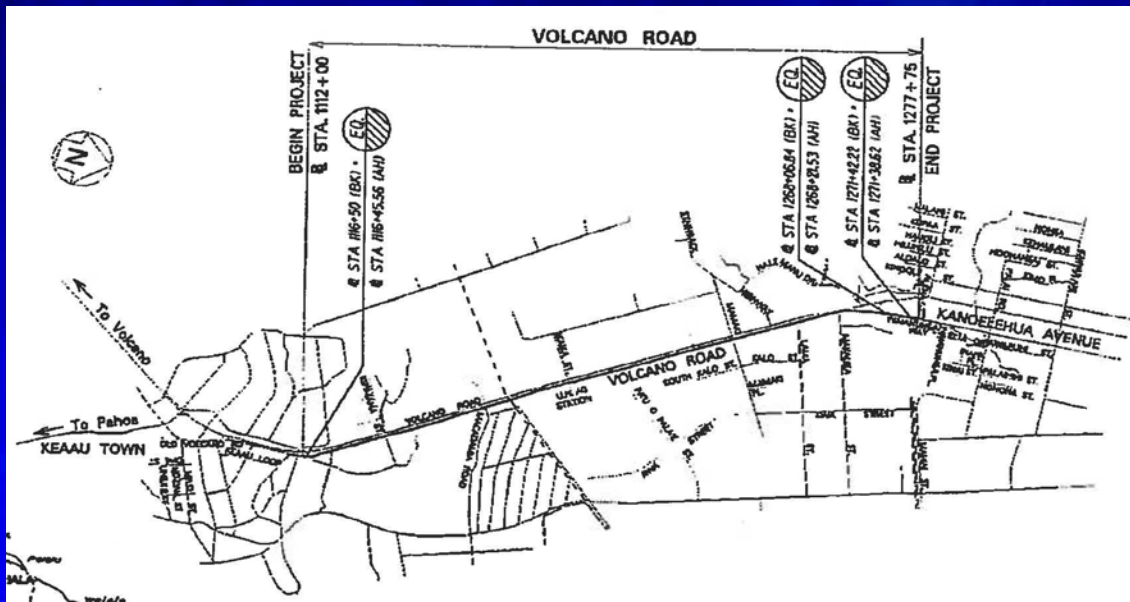
SCOPE

Reconstruct, cold plane, resurface, and re-stripe inbound roadways and connector roads between M.P. 6.5 to 3.31.

EST. COST \$2 million

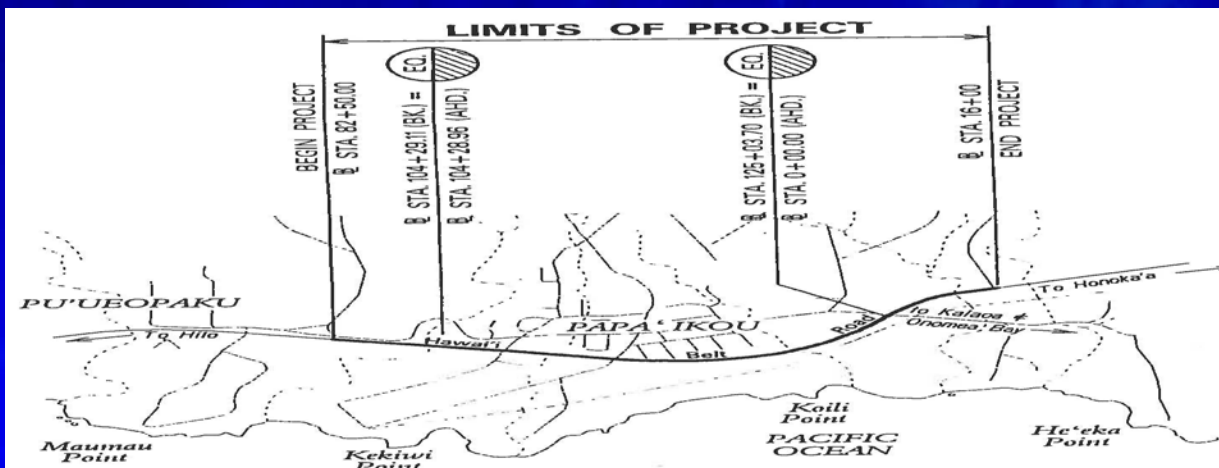
EST. SCHEDULE

Complete in July 2013





Highways Division
Hawaii Belt Road Safety Improvements
Vicinity of Papaikou Mill Road Intersection



SCOPE

Installation of milled pavement rumble strips, guardrail, driver-feedback speed signs, curb delineator system, pavement marking & signs

EST. TOTAL COST

\$300k

EST. SCHEDULE

Est. completion: Aug. 2013



Highways Division

Hawaii Belt Road Umauma Bridge Repair & Painting



SCOPE

Construct new piers, foundations, minor deck widening and replacement of bridge rails.

EST. COST

\$30 Million

EST. SCHEDULE

NTP Date: July 2013



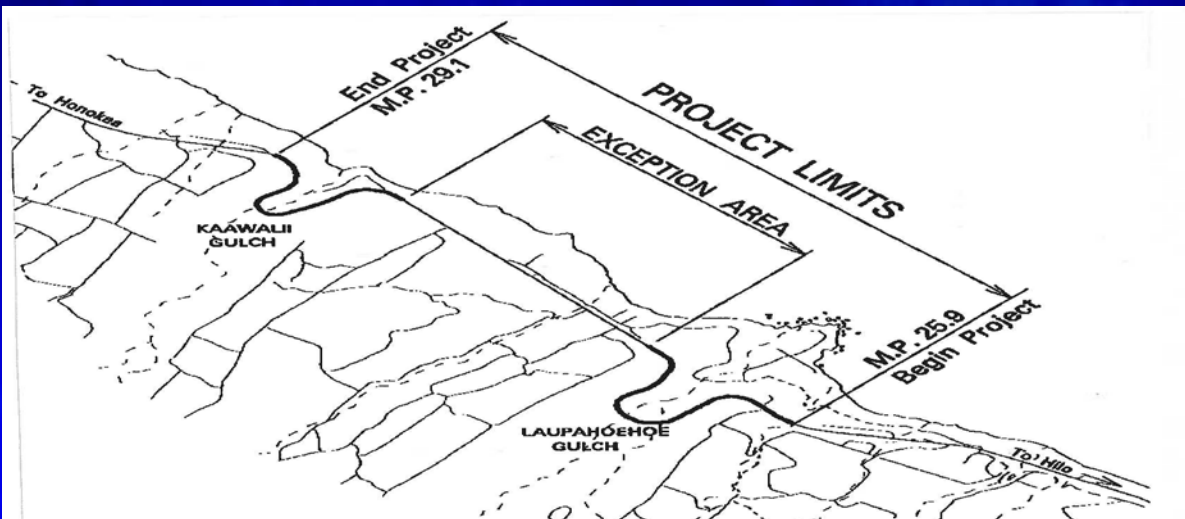
Photo 1: View of bridge along roadway

Ph



Highways Division

Hawaii Belt Road Safety Improvements and Resurfacing (Laupahoehoe Gulch and Kaawalii Gulch)



SCOPE

Resurface pavement, replace existing guardrails, reconstruct or adjust existing monuments, install pavement striping / markings.

EST. COST

\$11 Million

SCHEDULE

Anticipated NTP Date:
Fall 2013



Highways Division
 Keaau-Pahoa Road
 Shoulder Lane Conversion (Phases I & II)



SCOPE

Provide northbound shoulder lane conversion and paved shoulder. Provide new southbound afternoon shoulder lane in the Pahoa bound direction and paved shoulder. Traffic signal at intersection of Keaau-Pahoa Road and Shower Drive.

EST. COST

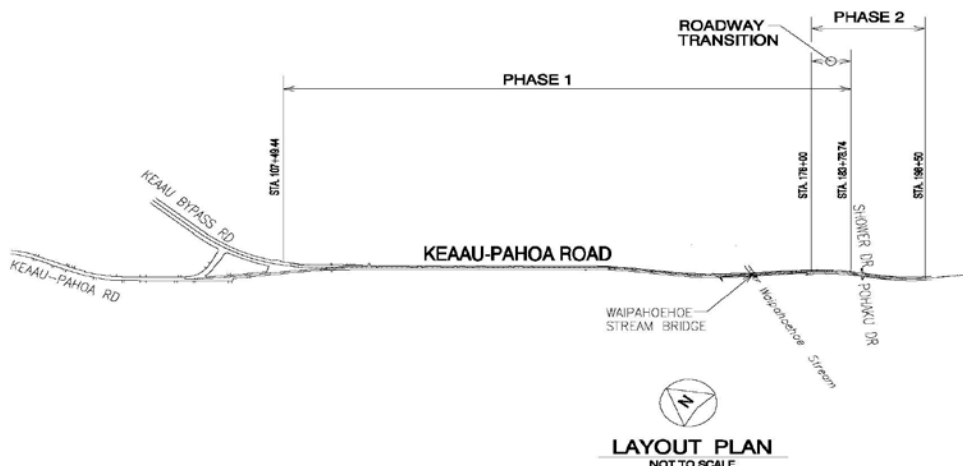
Phase I: \$15 Million

Phase II: \$3 Million

SCHEDULE

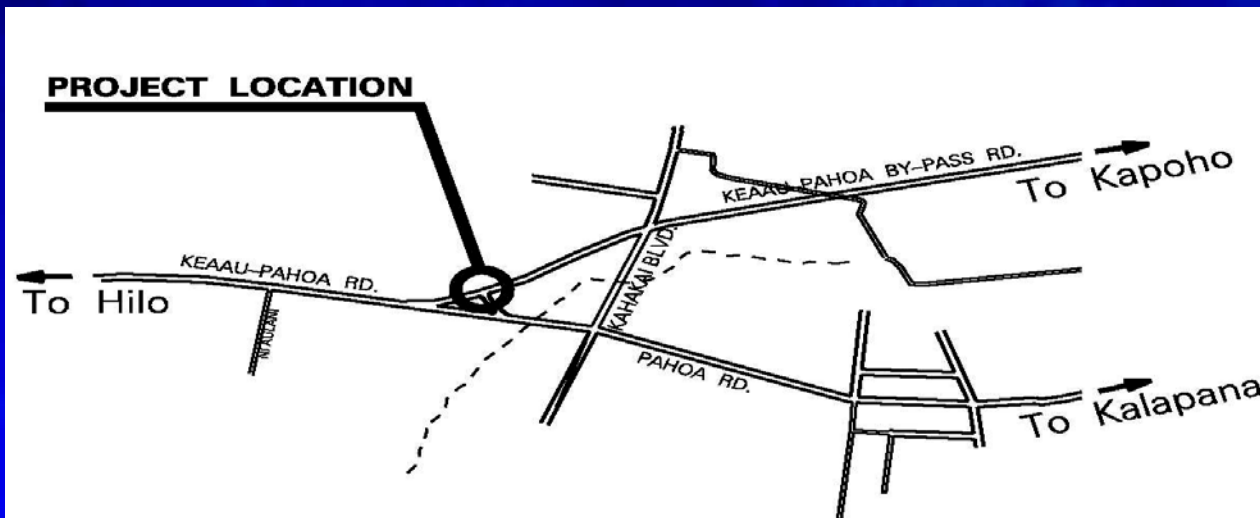
Phase I – NTP: Oct. 2013

Phase II – tbd





Highways Division
Keaau-Pahoa Road
Intersection Improvements at Old Government Road



SCOPE

Operational and safety improvements.

EST. COST

\$4.7 Million

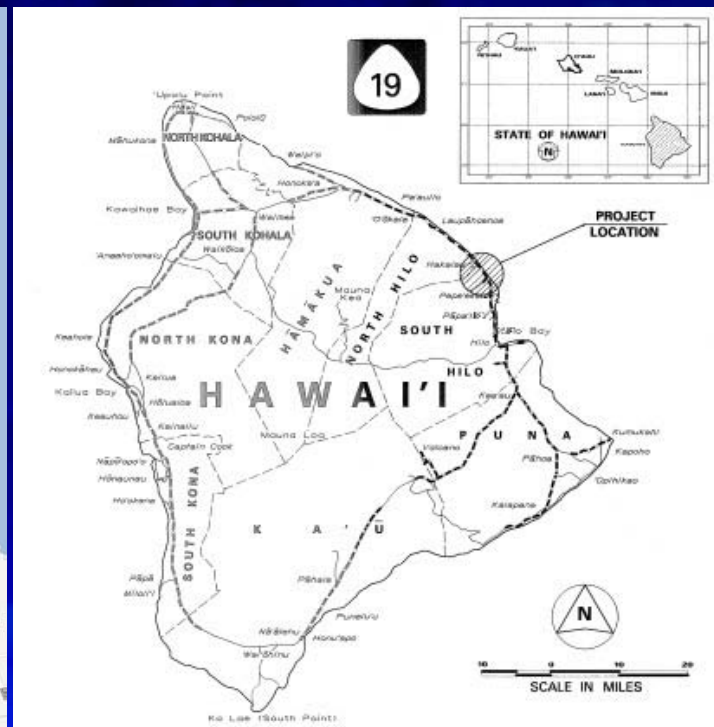
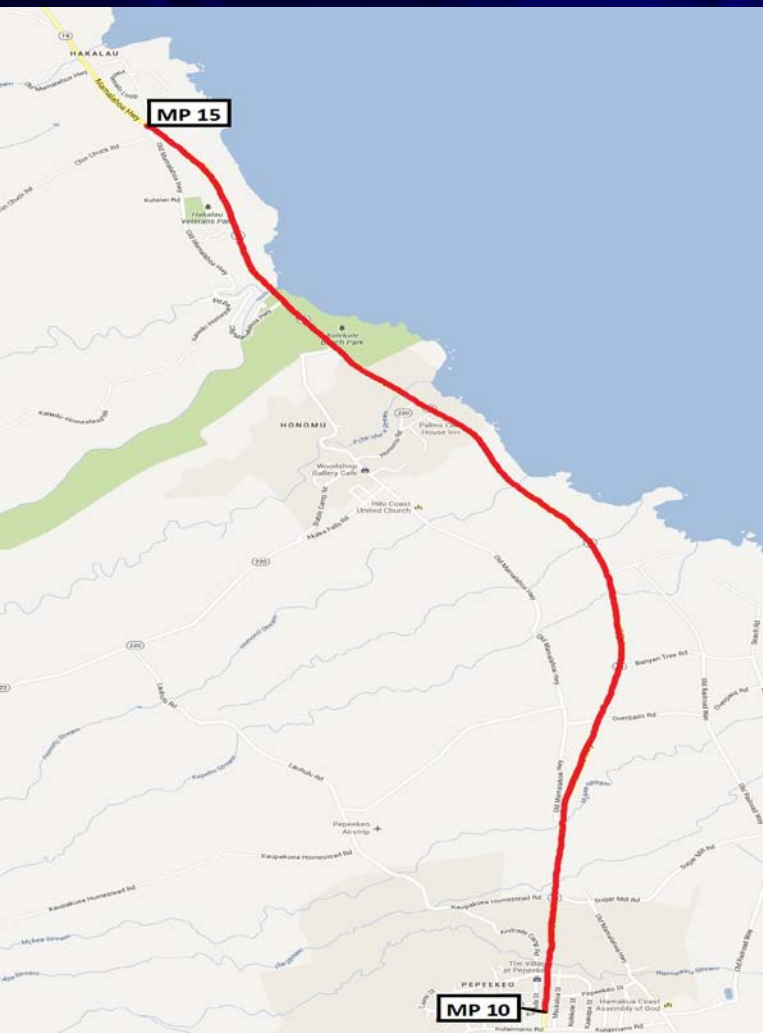
EST. SCHEDULE

Estimate Advertise:
late 2013



Highways Division

Hawaii Belt Road Resurfacing Pepeekeo to Hakalau, MP 10-15



SCOPE

Resurface pavement and reconstructing problem areas.

EST. COST

\$12 Million

SCHEDULE

Est.
Advertising:
August 2013

Highways Division Volcano Road Widening Keaau to Paahana Street



SCOPE

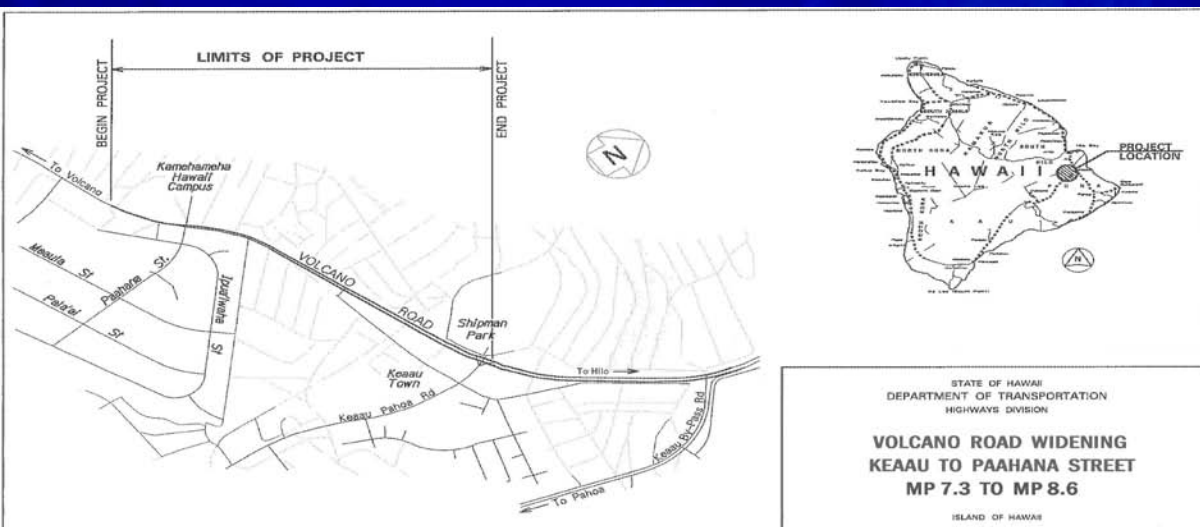
Regrade and reconstruct existing roadway to provide widened shoulders and to restore original roadway crown.

EST. COST

\$4 Million

EST. SCHEDULE

Anticipate Advertising:
August 2014





Highways Division

Hawaii Belt Road Rockfall Protection, Vicinity of Hakalau Bridge



SCOPE

Construct spillway, culvert system, tree trimming, slope protection, reconstruction pavement and replace pavement markings.

EST. COST

\$5 Million

EST. SCHEDULE

Anticipate
Advertising:
Sept 2014



Highways Division

Hilo Bayfront Highway Intersection Improvements – Waianuenue Avenue



SCOPE

Pavement widening, curb / gutter, sidewalk & curb ramps. Relocation of existing DI, utility & traffic signal poles, striping & signage.

EST. TOTAL COST

To be determined

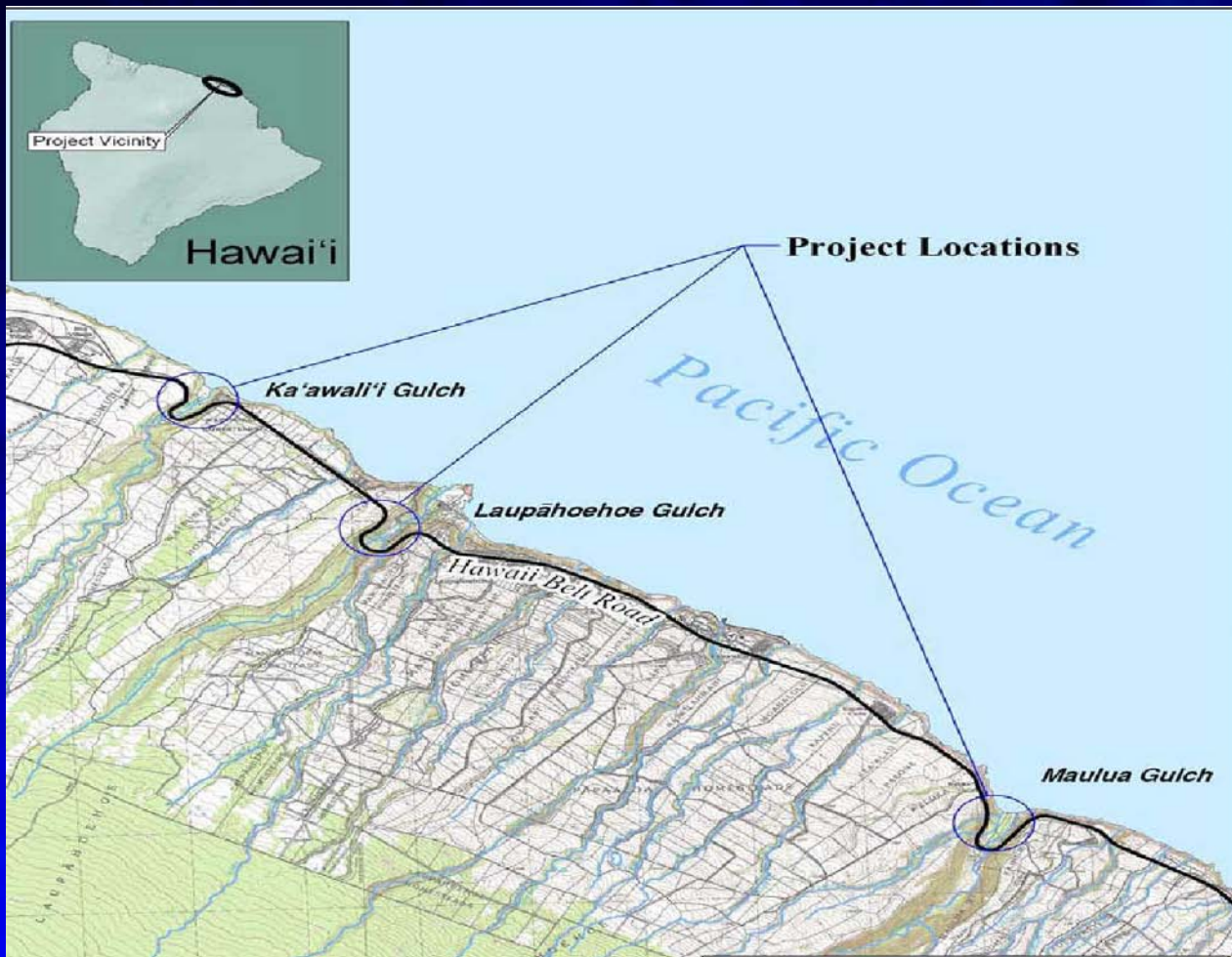
EST. SCHEDULE

Design est. begin 2014
Construction est 2016



Highways Division

Hawaii Belt Road Rockfall Protection at Various Sections, Phases I, II & III



SCOPE

Mitigate potential rock and debris slides.

EST. TOTAL COST

\$35M++

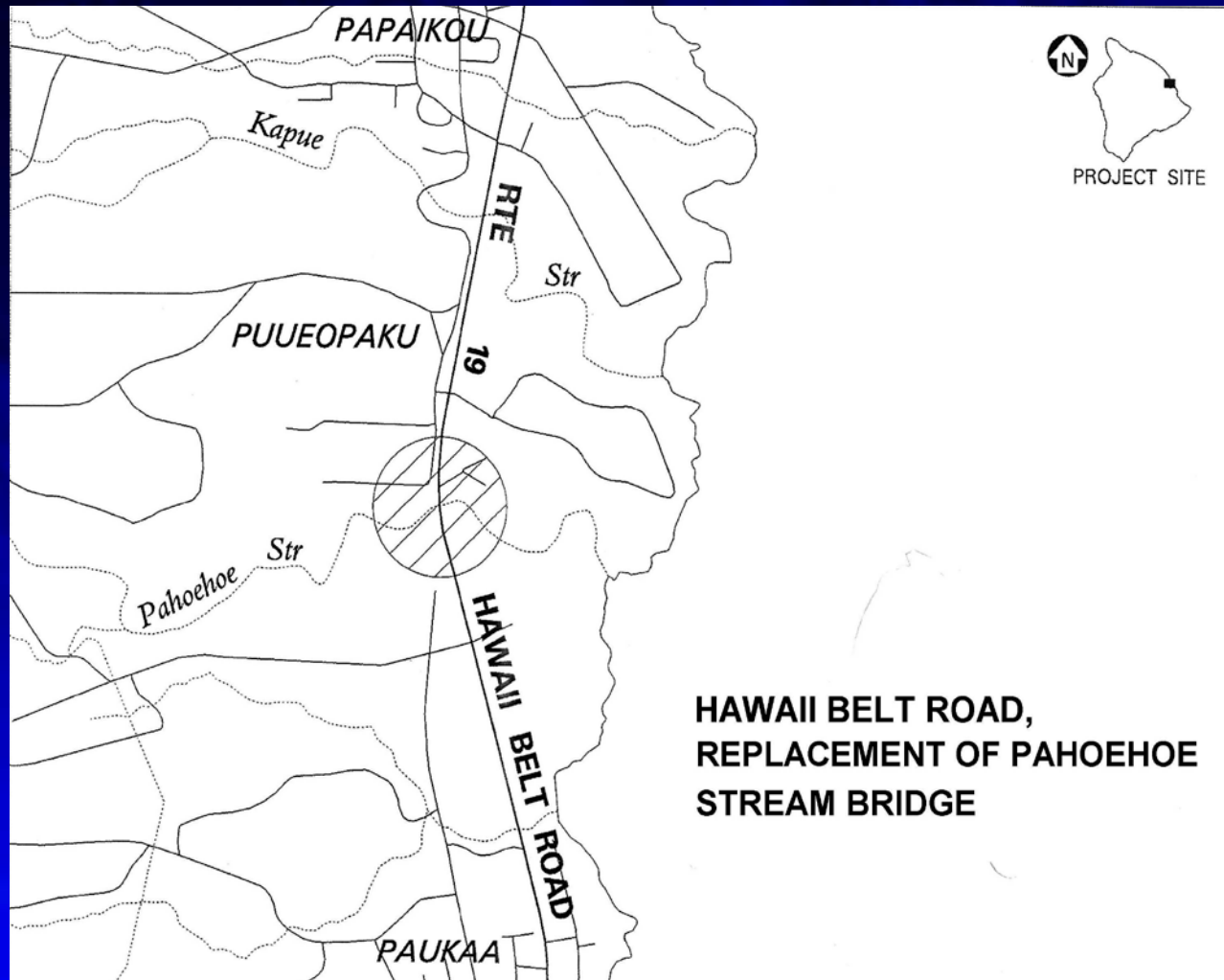
EST. SCHEDULE

Advertise late 2016



Highways Division

Hawaii Belt Road Pahoehoe Stream Bridge Replacement



**HAWAII BELT ROAD,
REPLACEMENT OF PAHOEHOE
STREAM BRIDGE**

SCOPE

Replace existing
bridge

EST. TOTAL COST

\$12 million

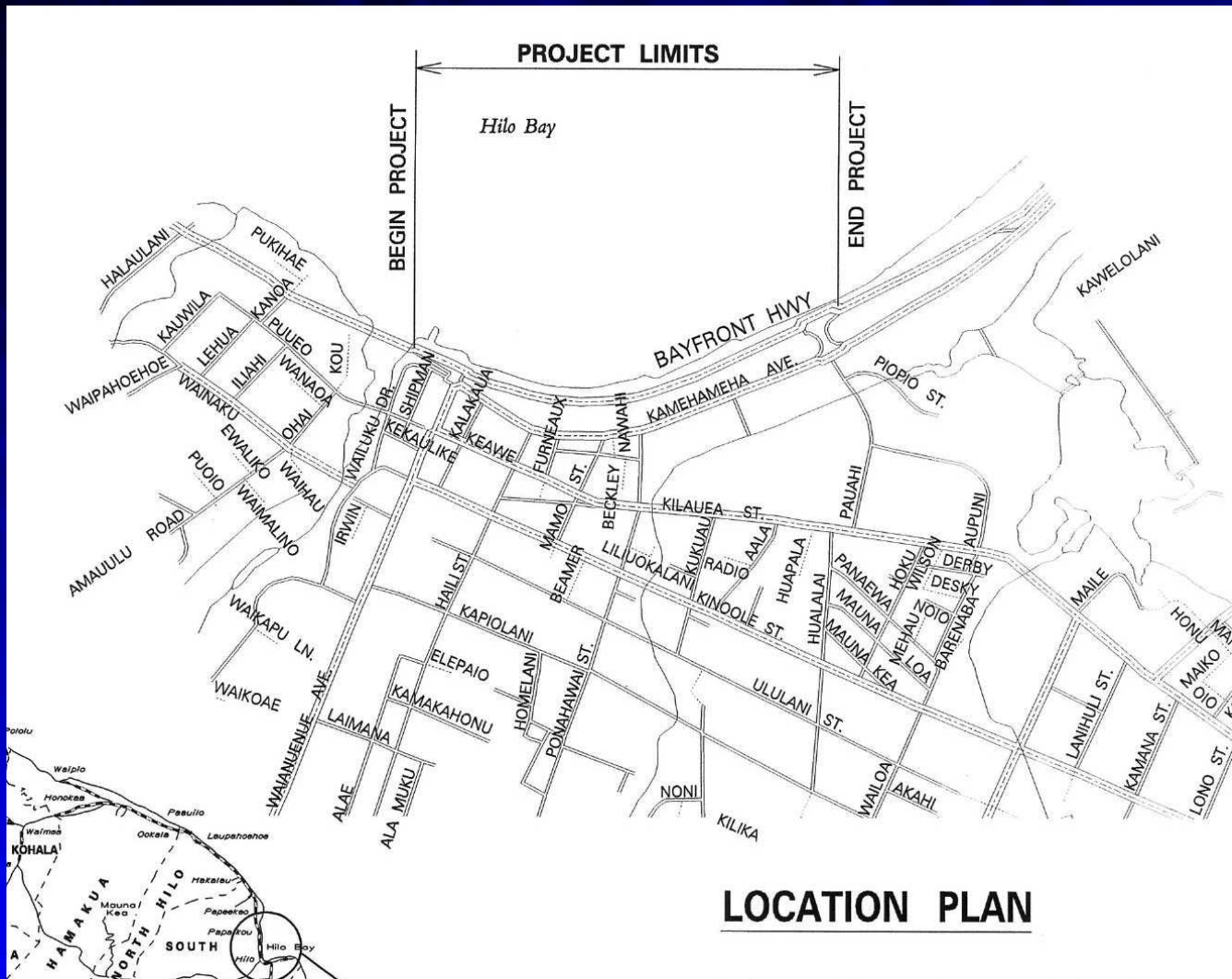
EST. SCHEDULE

Est. advertising:
September 2017



Highways Division

Hilo Bayfront Highway Shoreline Protection



SCOPE

Provide mitigation of potential erosion hazards along approximately 2,500 feet of highway on the western half of the Bay front shoreline.

EST. TOTAL COST

\$3.5 million

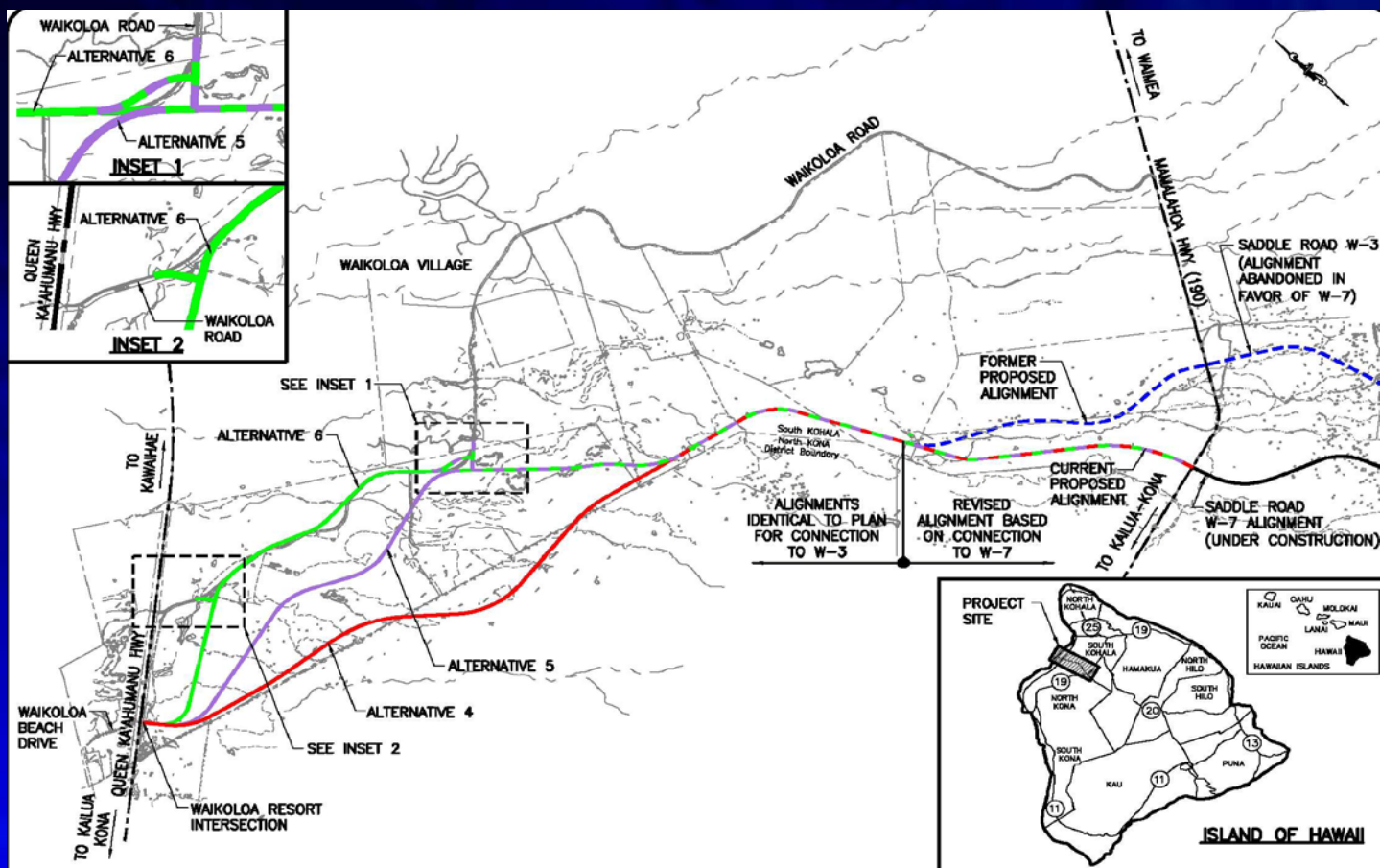
EST. SCHEDULE

Est. Advertising:
October 2017



Highways Division

Saddle Road Extension – Mamalahoa Highway to Queen Kaahumanu Highway



SCOPE:

Extension of Saddle Road from Mamalahoa Hwy. to Queen Kaahumanu Hwy.

EST. COST

\$80 Million

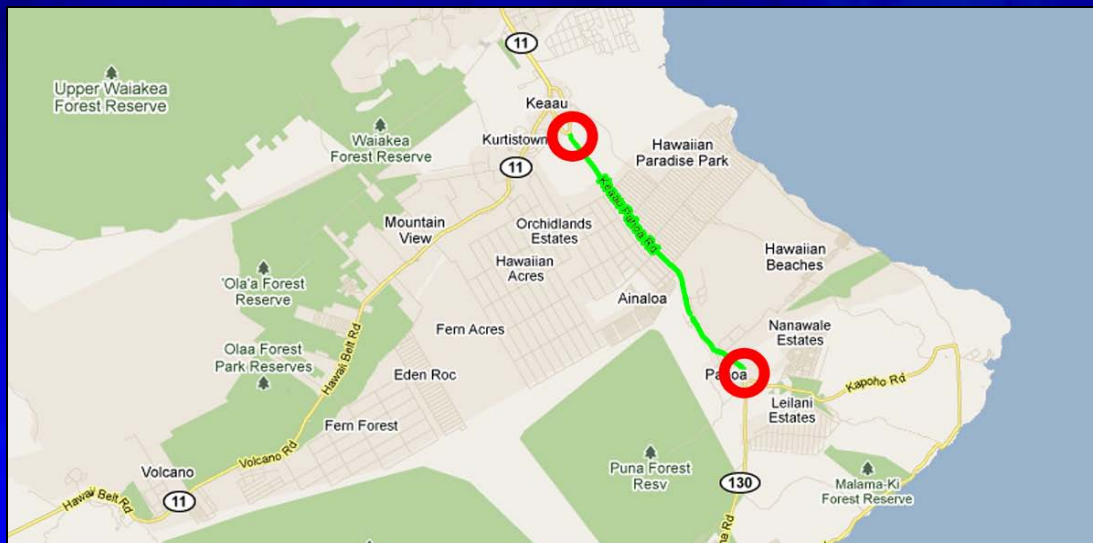
EST. SCHEDULE

EIS – late 2013





Highways Division
Keaau-Pahoa Road
Keaau to Pahoa Improvements



SCOPE

Improve traffic capacity, circulation & safety along Route 130. Improve travel for alternative modes of transportation, bicycles & pedestrians.

EST. COST

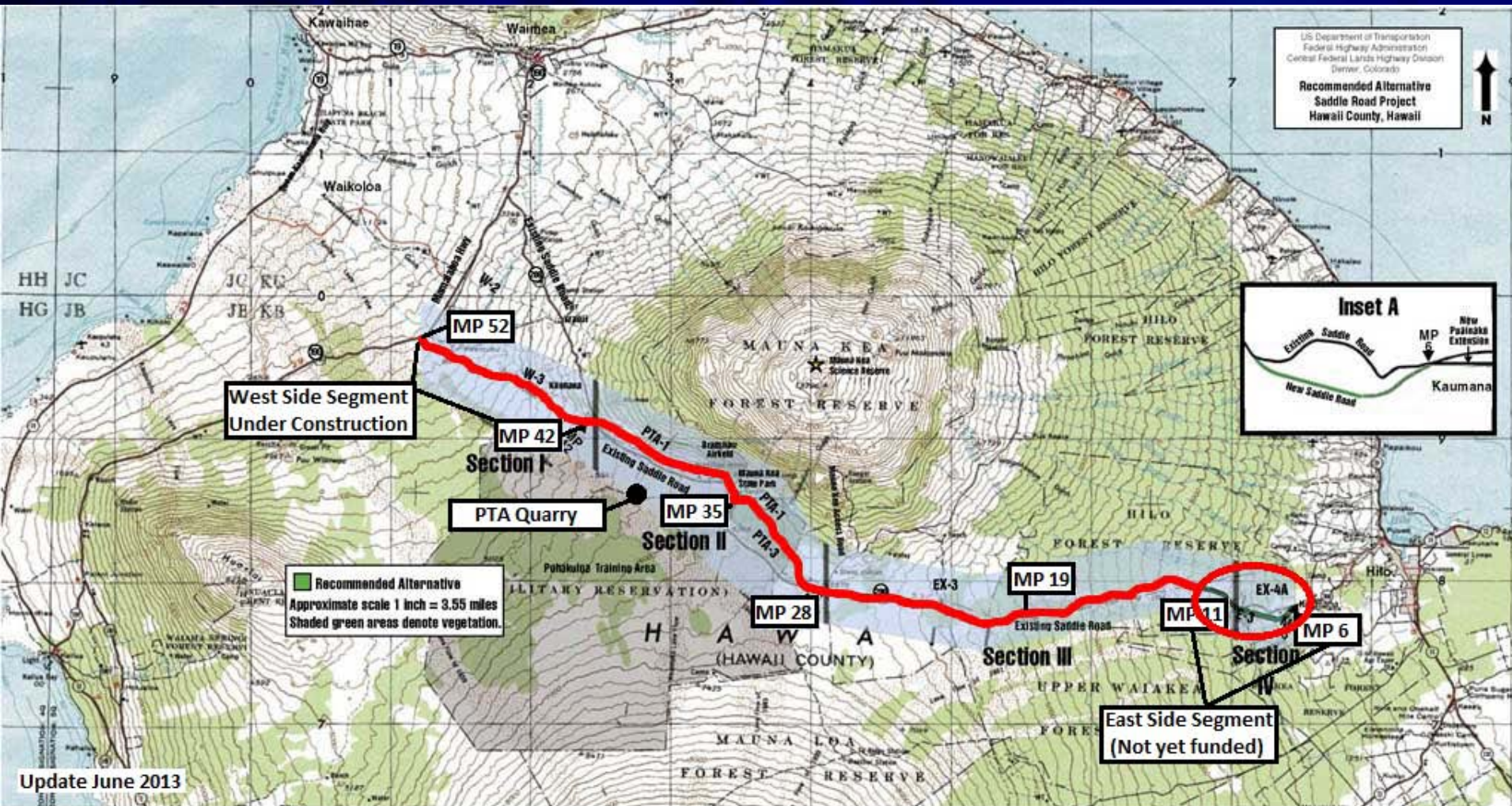
\$136 - \$139 Million

EST. SCHEDULE

Multiphased project



Highways Division Saddle Road – Route 200

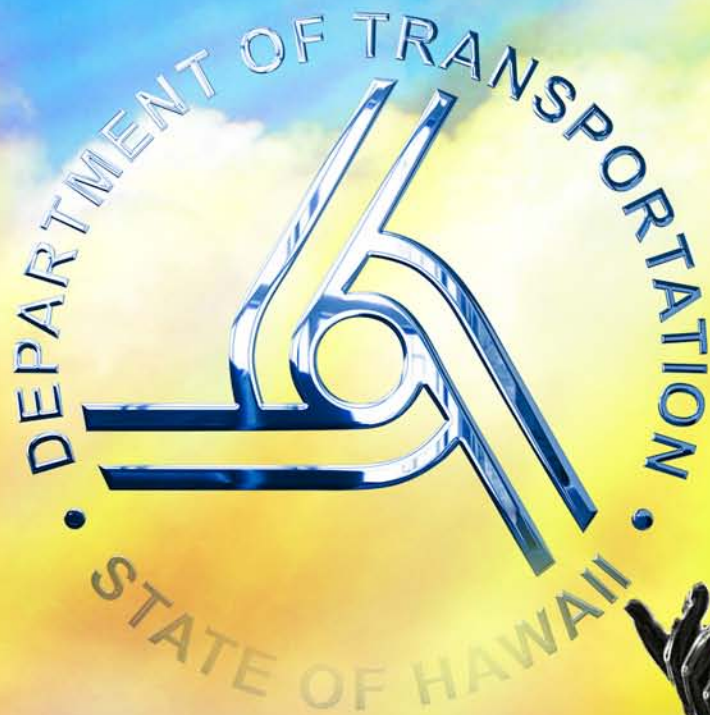




Highways Division

Saddle Road – to be renamed and dedicated as Daniel K. Inouye Highway





NEW DAY IN HAWAII

Mahalo and Aloha