

# **Pali Highway Improvements Vineyard Boulevard to Kamehameha Highway**

**Public Information Meeting for  
National Environmental Policy Act (NEPA),  
Chapter 343 Hawaii Revised Statutes (HRS),  
Section 106 Consultation under National Historic  
Preservation Act (NHPA),  
and Noise Variance Consultation**



# Purpose Of This Meeting



- \* Inform the Community about the project scope and schedule
- \* Consult with the Community for
  - NEPA and Chapter 343, HRS
  - Section 106 under NHPA
  - Noise Variance

*Pali Highway Improvements: Vineyard Blvd to Kamehameha Hwy*

# Meeting Agenda



- \* Proposed Project Overview
- \* NEPA and Chapter 343 HRS Consultation
- \* Section 106 Consultation under NHPA
- \* Noise Variance Consultation
- \* Public Comments

*Pali Highway Improvements: Vineyard Blvd to Kamehameha Hwy*

# Proposed Project Overview

## Project Purpose and Need



- \* Resurfacing weakened pavement
- \* Replacing and upgrading safety features
- \* Upgrade highway lighting to shielded LED lights



*Pali Highway Improvements: Vineyard Blvd to Kamehameha Hwy*

# Proposed Project Overview

## Proposed Phases

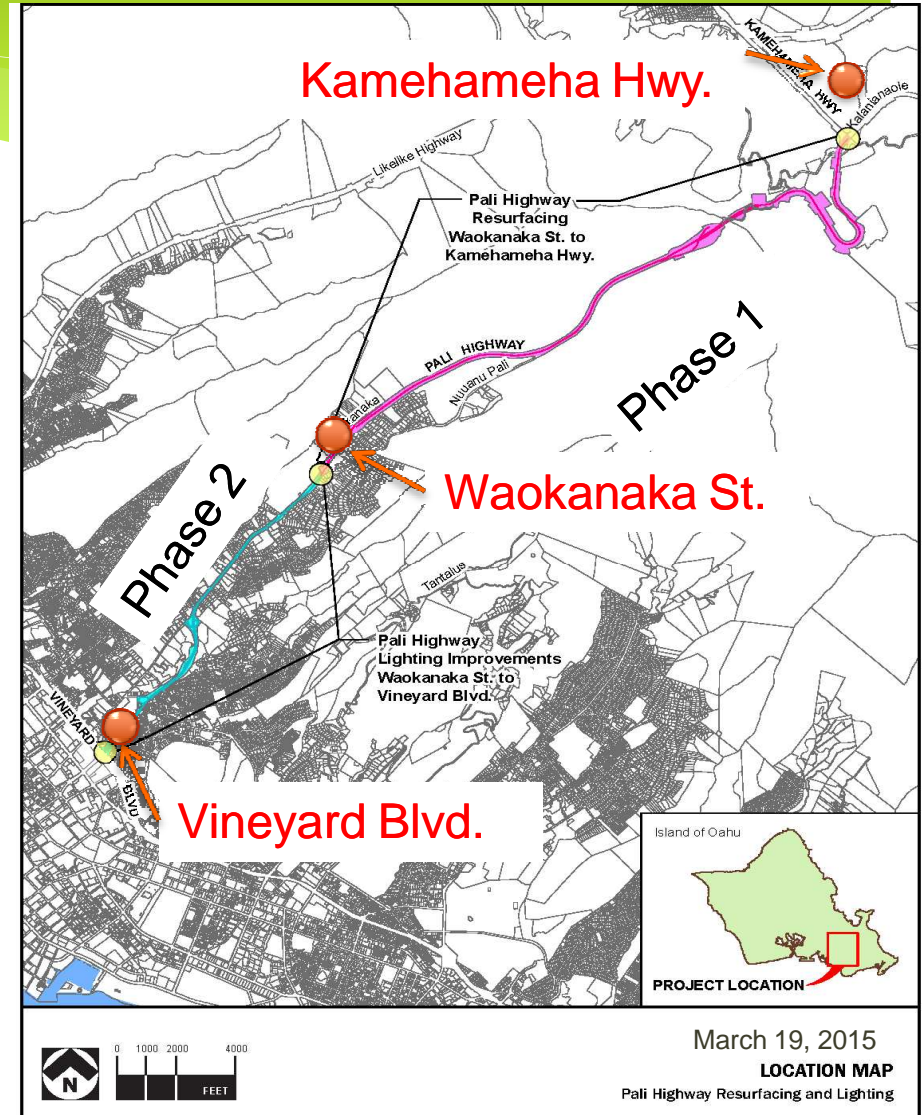


### Phase 1:

Resurfacing Waokanaka St. to Kamehameha Hwy. and Lighting Replacement, Vineyard Blvd. to Kamehameha Hwy.  
7.68 miles, \$44 million

### Phase 2:

Resurfacing Vineyard Blvd. to Waokanaka St.  
2.64 miles, \$18 million





# Proposed Project Overview

## Phase 1 Scope of Work



- \* Repave/rehabilitate highway surface
- \* Replace signs and pavement markings
- \* Construct median barrier in some locations
- \* Replace guardrails and crash cushions
- \* Install new guardrails
- \* Replace highway lighting



*Pali Highway Improvements: Vineyard Blvd to Kamehameha Hwy*

# Proposed Project Overview

## Phase 2 Scope of Work



- \* Repave/rehabilitate highway surface
- \* Repair sidewalk
- \* Adjust manholes and covers
- \* Replace signs and pavement markings
- \* Install bridge rails
- \* Install curb ramps
- \* Replace guardrail and end treatments



# Proposed Project Overview

## Proposed Project Schedule



- \* Public information meeting: March 18, 2015
- \* FHWA render determinations of effects on historic properties
- \* Finalize environmental documentations
- \* Finalize construction plans and design
- \* Phase1 construction plans and permitting completed by end of Summer 2015

*Pali Highway Improvements: Vineyard Blvd to Kamehameha Hwy*



# Proposed Project Overview

## Proposed Project Schedule



- \* Phase 1 construction estimated to start in Spring 2016
- \* Phase 1 construction estimated to end in Spring 2018
- \* Phase 2 construction estimated to start in Fall 2017
- \* Phase 2 construction estimated to end in Fall 2018

*Pali Highway Improvements: Vineyard Blvd to Kamehameha Hwy*

# NEPA and Chapter 343 HRS Consultation



- \* Both Federal and State money would fund this project
- \* Must comply with the following Federal and State laws
  - NEPA
  - Chapter 343, HRS
- \* Request comments from the Community this project

*Pali Highway Improvements: Vineyard Blvd to Kamehameha Hwy*

# Section 106 Consultation under NHPA



- \* Requires Federal agencies to consider the effects of their actions on historic properties
- \* Related State requirement is HRS Chapter 6E
- \* Section 106 is a consultation process
  - \* Requires consultation with NHOs
  - \* Other Stakeholders

*Pali Highway Improvements: Vineyard Blvd to Kamehameha Hwy*

# Section 106 Consultation under NHPA



- \* Worked with SHPD to determine the APE of this project
- \* Consultation letters were sent in Feb. 2015 requesting Section 106 comments
- \* Newspaper ad published in *Honolulu Star Advertiser* on March 1, 2015
- \* Newspaper ad will be published in the April edition of the *Ka Wai Ola*

*Pali Highway Improvements: Vineyard Blvd to Kamehameha Hwy*

# Section 106 Consultation



## \* Steps involved:

1. Initiate the process by inviting parties to consult  
(*we are at this step*)
2. Identify and evaluate historic properties
3. Assess effects, if any
4. Resolve adverse effects, if any

We are requesting comments from the Community on the historical and cultural sites in the project area

*Pali Highway Improvements: Vineyard Blvd to Kamehameha Hwy*



# Noise Variance Consultation

## Noise Regulations



- \* HAR Title 11, Chapter 46 sets the rules and restrictions on sound levels for construction projects. It states:  
*“No permit shall allow any construction activities which emit noise:*
  - \* *Monday thru Friday before 7 a.m. and after 6 p.m. of the same day*
  - \* *Saturday before 9 a.m. and after 6 p.m.*
  - \* *Sundays and on Holidays”*
- \* A Noise Variance must be obtained for any construction activities to occur outside the permissible hours (i.e. after 6 p.m. weekdays).

*Pali Highway Improvements: Vineyard Blvd to Kamehameha Hwy*

# Noise Variance Consultation

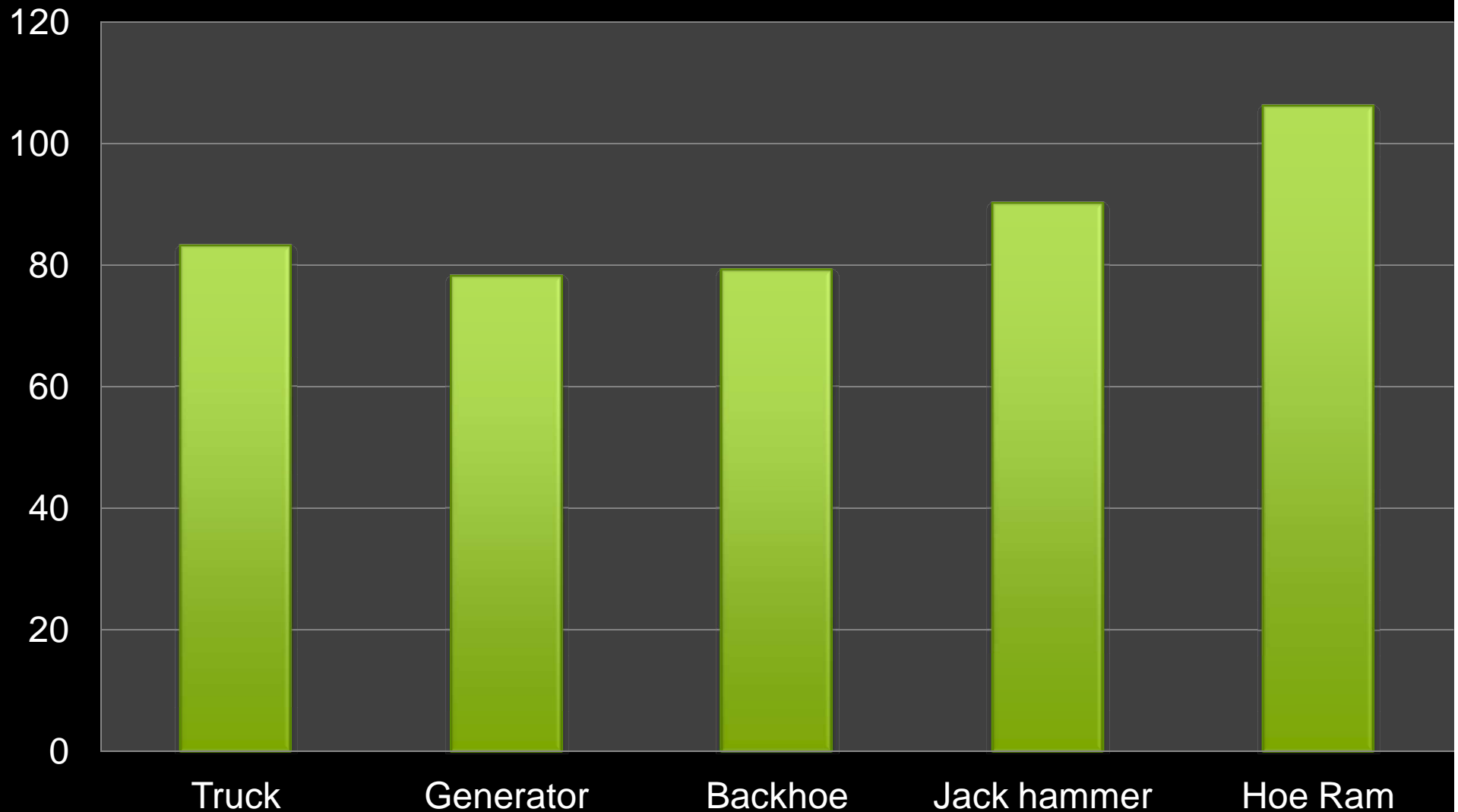
## Proposed Noise Variance



- \* Noise Variance Application for Phase 1 construction from *Waokanaka Street to Kamehameha Highway* submitted to DOH
- \* Request work be allowed 24 hours, 7 days a week, 365 days a year, for 2 years
- \* Anticipate most of the work occurring during the day, but night work maybe required for paving
- \* Will work with Contractor to decide on the least impactful schedule to Community

*Pali Highway Improvements: Vineyard Blvd to Kamehameha Hwy*

# Construction Equipment Noise Level (dBA) at 50 feet



# Noise Variance Consultation

## Noise Abatement



- \* Flyers with contact information (hot line) will be sent prior to start construction
- \* Contractor will maintain a website that will be updated with construction information at least every two weeks
- \* All equipment with an exhaust of gas or air will be equipped with mufflers

*Pali Highway Improvements: Vineyard Blvd to Kamehameha Hwy*

# Noise Variance Consultation

## Noise Abatement



- \* HDOT field personnel and the Contractor will monitor all equipment and construction activities on the job site
- \* Instructional meetings will be held for construction crews and truck drivers
- \* The Contractor will have a corrective action program

*Pali Highway Improvements: Vineyard Blvd to Kamehameha Hwy*



# Public Comment



- \* What are your comments for this project regarding
  - Noise Variance (construction at night)
  - Section 106 (historical and cultural sites)
  - Chapter 343 and NEPA (comment about this project)
- \* Make comments here tonight or take home a comment form and mail it to us on or before  
April 18, 2015.

*Pali Highway Improvements: Vineyard Blvd to Kamehameha Hwy*

# Public Comment



- \* Please be respectful to those speaking
- \* Please keep focused on the proposed project
- \* Welcome comments for Noise Variance first



*Pali Highway Improvements: Vineyard Blvd to Kamehameha Hwy*

# More Information



**HDOT**

**dotpao@hawaii.gov**

**hidot.hawaii.gov**

**HDOT Facebook & Twitter**

**587-2160**



# Mahalo

***Thank you for your patience as  
HDOT works to improve  
our state highways***