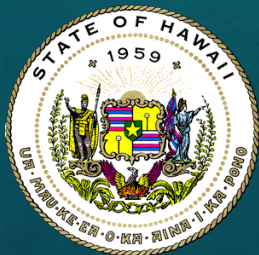


Kalaeloa Barbers Point Harbor Fuel Pier and Harbor Improvements Draft Environmental Impact Statement Public Meeting



Date: March 1, 2017

Time: 6 PM – 8 PM

Location: DHHL Hale Ponoʻī, Kapolei



Meeting Objectives

- **Present Information about the Project**
 - What is an Environmental Impact Statement (EIS)?
 - Why are the Improvements Needed?
 - What is the Proposed Action?
 - What are the Design Alternatives?
 - What are the Potential Effects of the Proposed Action?
 - What are the Proposed Mitigation Measures?
- **Gather Public Input**
- **Answer Questions about the Project**

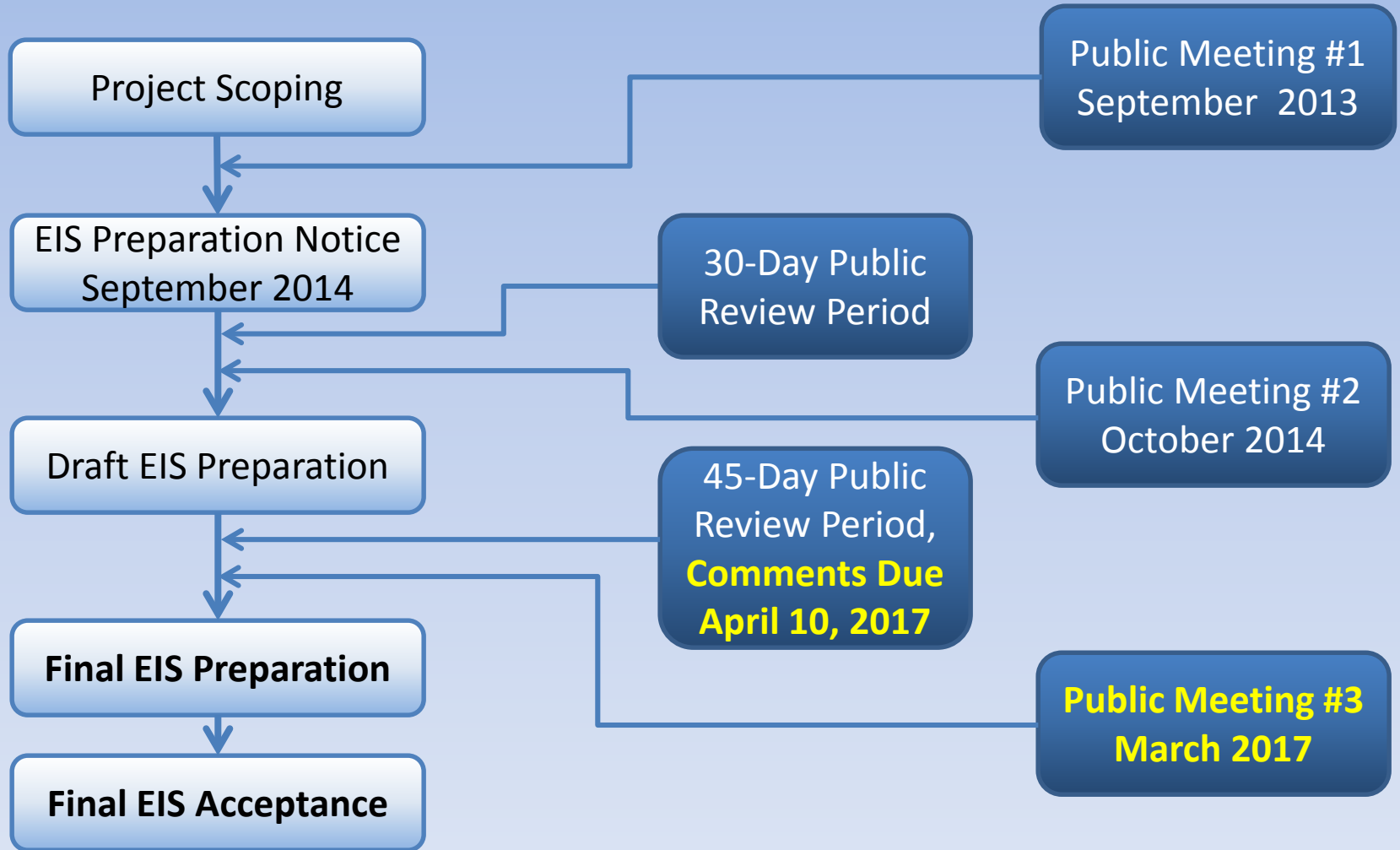


What is an EIS?

- ***Informational Document*** that Discloses Specific Information about the Project
- ***Increase Public Participation*** by Integrating Concerns
- **Information for *Decision Making***
- **Contents include:**
 - Existing Environmental Conditions
 - Alternatives
 - Potential Impacts on the Environment
 - Proposed Mitigation Measures to Avoid/Minimize Impacts
 - Compliance with Public Policies & Programs



EIS Process





Purpose and Need for the Project

- **Purpose:**

- To add *Berthing, Yard Space* and other *Infrastructure* to Optimize Operational Efficiencies

- **Need:**

- Meet 2040 Forecast Demands for Dry- and Liquid-Bulk Cargos
- Modernize Port Security, Safety and Redundancy
- Accommodate Fluctuations in Hawai'i's Fuel Market
- Provide Infrastructure to Support Harbor Users



Proposed Action

- **Proposed Action:**

- Piers 3 & 4 Fuel Terminal
- Pier 7 Extension and Cargo Yard Expansion
- Pier 8 Layberth (for Small Vessels) & Multi-Purpose Yard
- Pier 9 Improvements (Tenants)
- Consolidate Maritime Support Services
- Pier 10 Layberth (for Large Vessels)
- Realign Perimeter Road
- Relocate Harbor Office and Maintenance Facility
- Misc. Improvements (Personnel Shelters & Mooring Bollards)
- Improve Utilities (Electrical & Water Services)
- Improve Perimeter Lighting

- **Alternatives: Proposed Action, Alt. B & No Action**

KBPH EIS

Proposed Action

Piers 3 & 4 Fuel Terminal

Extend Pier 7 & Expand Cargo Yard

Pier 8 Layberth

Multi-Purpose Yard

Electrical & Water Service

Pier 9 Improvements

Maritime Support Services

Pier 10 Layberth



New Harbor Office

Mooring Bollards

Realign Perimeter Road

Improve Perimeter Lighting

Legend

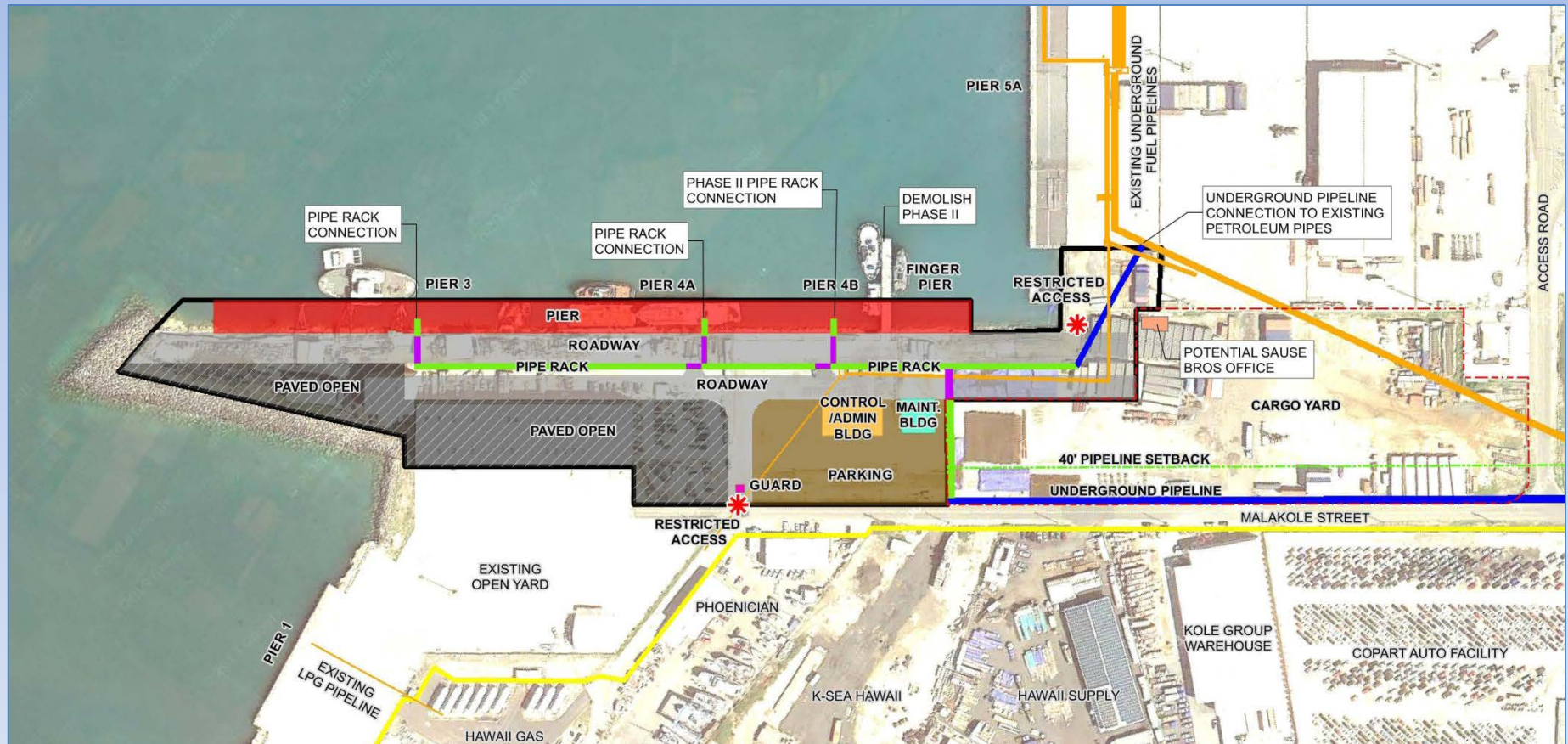
-  Harbor Boundary
-  Pipeline Corridor
-  Pier Improvements
-  Project Sites
-  Personnel Shelter

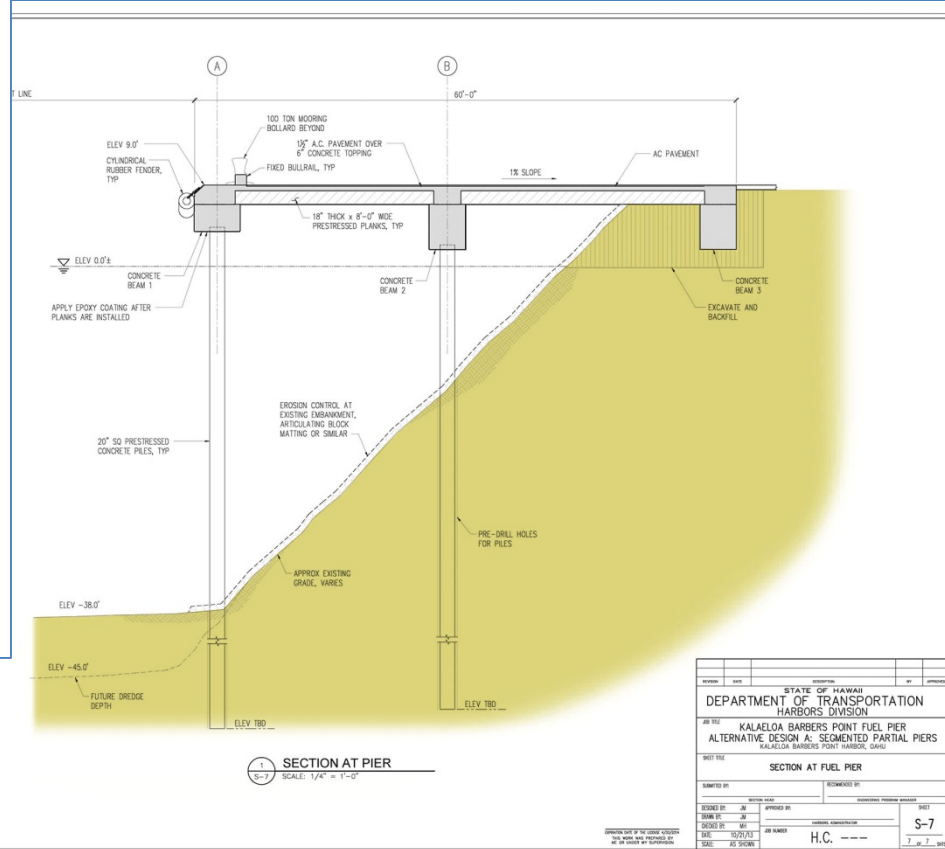
0 450 900
Feet





Fuel Terminal Concept Plan

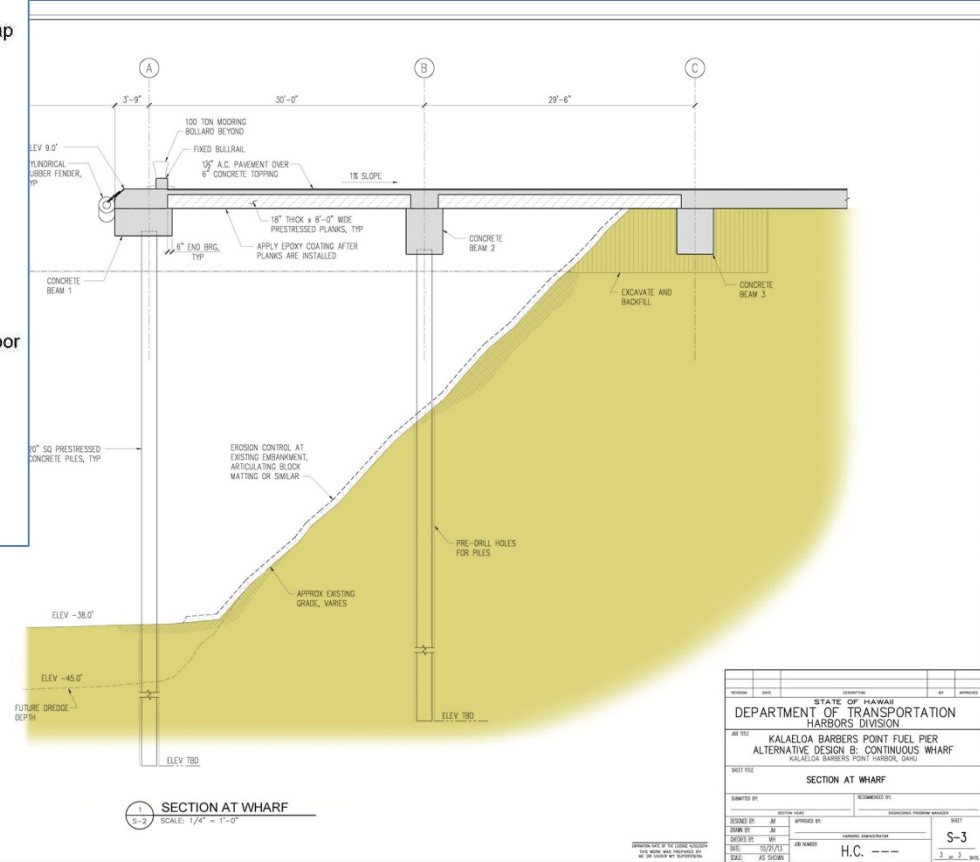
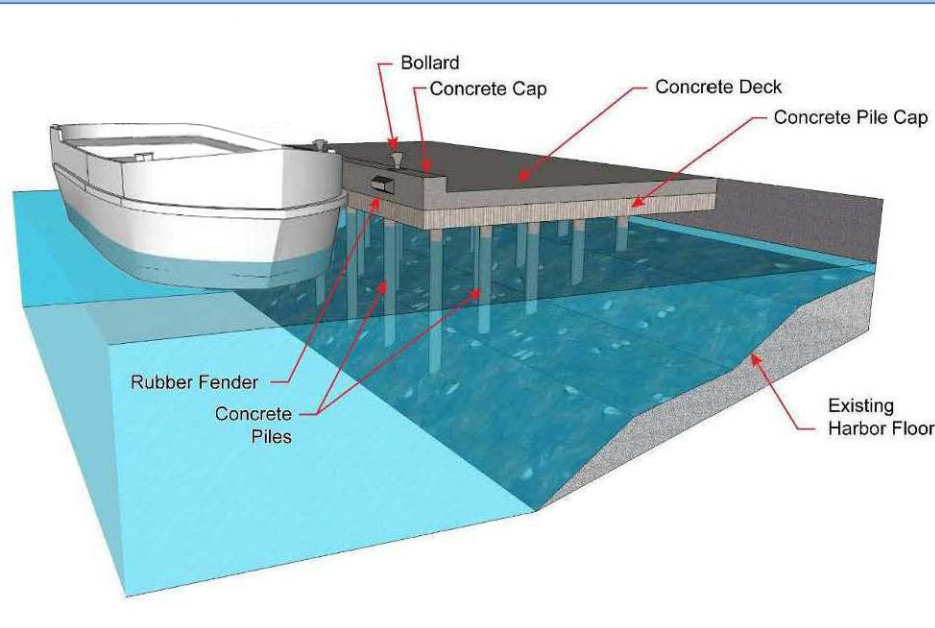


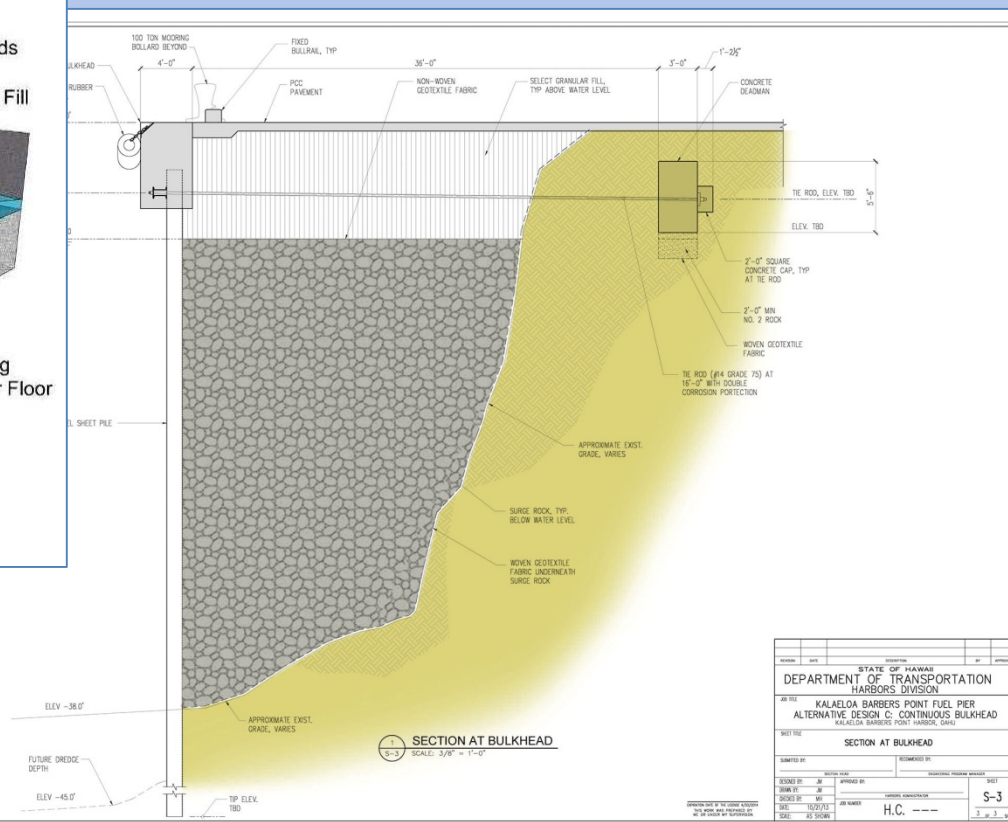




Design Option B:

Continuous Pile-Supported Platform Wharf



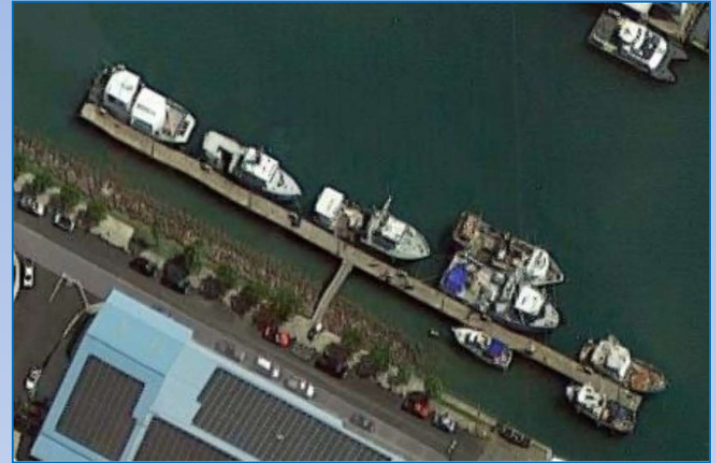




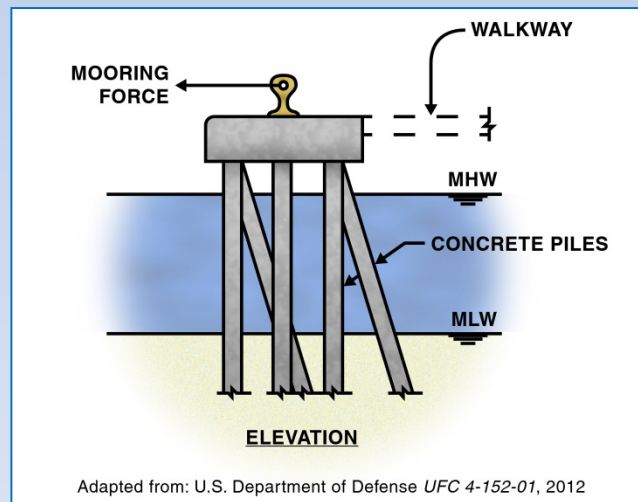
Additional Pier Design Options



Design Option D: Heavy Duty Floating Dock



Design Option E: T-Pier



Design Option F: Mooring Dolphins



Environmental Components Evaluated

- Existing Land Use
- Air Quality
- Natural Hazards
- Climate / Sea Level Rise
- Scenic Resources
- Traffic
- Utilities
- Emergency Response
- Geology, Soils
- Hazardous Materials
- Hydrology / Surface and Ground Water
- Biological Resources
 - On Land
 - In Water
- Marine Water Quality
- Noise / Acoustical
- Archaeological Resources
- Cultural Resources
- Socio-Economic Setting
- Federal, State & City Policies



Summary of Potential Impacts for Proposed Action

Potential Impacts	Proposed Minimization/Mitigation
Marine Resources <ul style="list-style-type: none">- Turbidity, vibrations, invasive species- Resource loss (corals, etc.)<ul style="list-style-type: none">• Short-term: dredging, pier construction• Long-term: shading- Intermittent shading, turbidity- Invasive species to harbors statewide- Improved navigation- Additional habitat	<ul style="list-style-type: none">• Construction site BMPs to protect marine environment• DOH CWB water quality standards• DLNR DAR ballast water management• HACCP to reduce invasive species• Specific BMPS and mitigation determined during the design and permitting phase



Summary of Potential Impacts **for Proposed Action**

Potential Impacts	Proposed Minimization/Mitigation
Air Quality <ul style="list-style-type: none">- Dust, exhaust, asphalt paving emissions- Increased air pollutants and GHG	<ul style="list-style-type: none">• Construction site BMPs to reduce emissions and dust• Improved technology to minimize emissions
Topography, Geography & Soils <ul style="list-style-type: none">- Permanent changes: grading and paving	<ul style="list-style-type: none">• Compliance with BMPs to contain soil
Botanical & Faunal Resources <ul style="list-style-type: none">- Spread of terrestrial invasive species- Reduction of habitat	<ul style="list-style-type: none">• Construction site BMPs to prevent spread• State's biosecurity program



Summary of Potential Impacts for Proposed Action

Potential Impacts	Proposed Minimization/Mitigation
Acoustical Environment <ul style="list-style-type: none">- Underwater: Pile driving, dredging, vessel cavitation- Land-based: shipyard activities, vessel / vehicular traffic	<ul style="list-style-type: none">• Underwater noise impacts determined during the DA permit phase• Compliance with DOH noise levels• Tenants responsible for attenuating noise
Roadways & Circulation <ul style="list-style-type: none">- Construction-related traffic- Negligible increase to daily traffic	<ul style="list-style-type: none">• Off-peak movement during construction• Construction Traffic Management Plan• Intersection improvements
Infrastructure & Utilities <ul style="list-style-type: none">- Small increase in demand on resources	<ul style="list-style-type: none">• None proposed
Navigable Airspace <ul style="list-style-type: none">- Airspace obstruction	<ul style="list-style-type: none">• Consult with FAA to identify hazards



Summary of Potential Impacts for Proposed Action

Potential Impacts	Proposed Minimization/Mitigation
Demographic & Fiscal Conditions <ul style="list-style-type: none">- Improve shipping capacity, reducing delays/demurrage- Construction-related employment/sales/govt revenues- Secondary benefits to employment, sales	<ul style="list-style-type: none">• None proposed
Hazardous Materials <ul style="list-style-type: none">- Fuel spills and unintended hazmat release- Risk of fire and explosion	<ul style="list-style-type: none">• Construction site BMPs to min. release• Regs for hazmat handling/management• USCG fuel transfer regulations• Design stds, security zones, safety, etc.
Recreational Resources <ul style="list-style-type: none">- Reduced access to piers for fishing	<ul style="list-style-type: none">• None proposed
Visual & Aesthetic Resources <ul style="list-style-type: none">- Equipment & new harbor facilities- Increased brightness from add'l lighting	<ul style="list-style-type: none">• New facilities similar to existing conds• Prevent light pollution



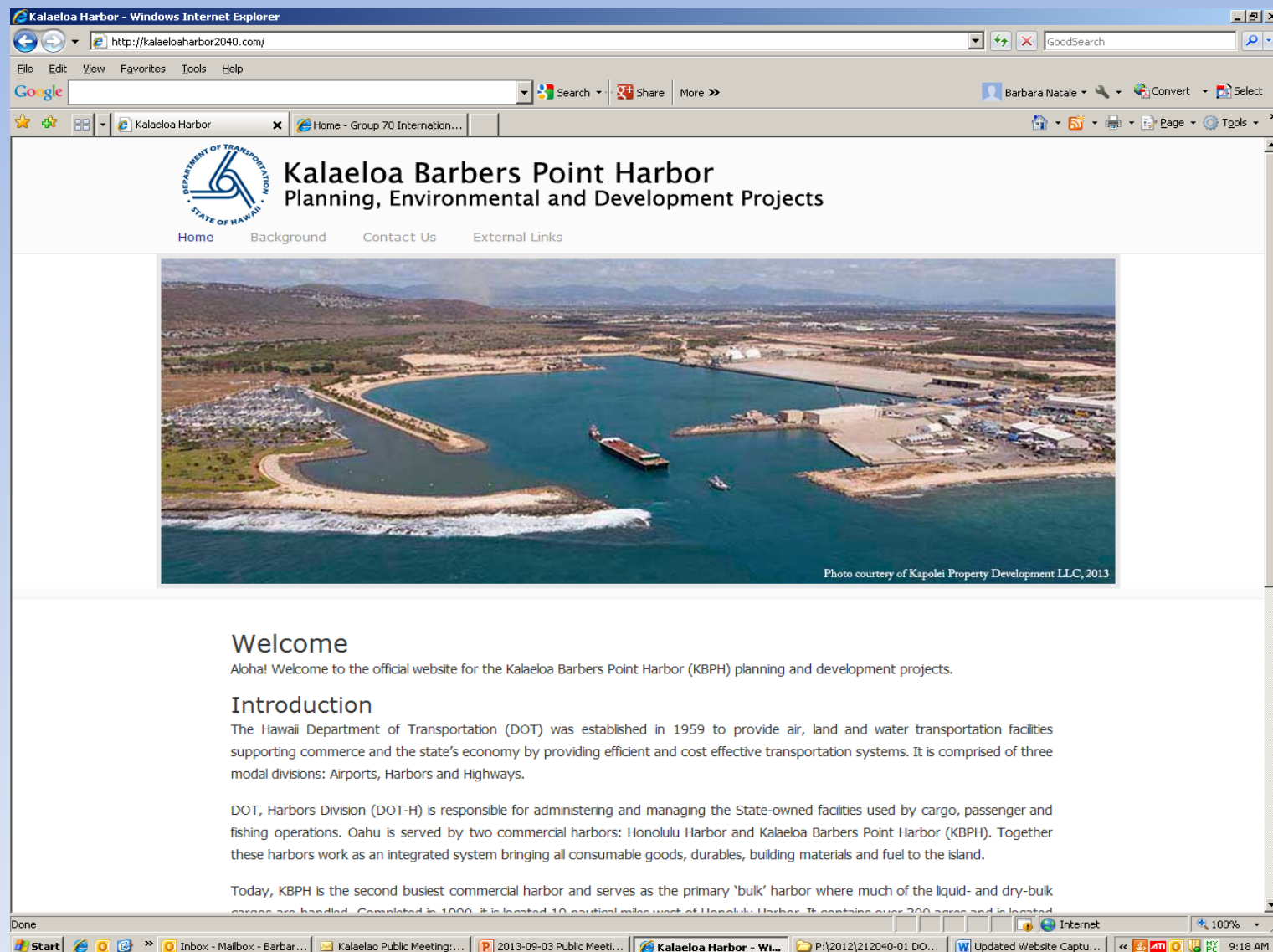
EIS Schedule

PROJECT EVENTS	ESTIMATED TIMETABLE
Project Scoping, Meetings with Agencies and Stakeholders	May – August 2013
EIS Preparation Notice (EISPN)*	August 8, 2013
EISPN Public Review	August 8 – September 9, 2013
Public Meeting #1 (Scoping)	September 3, 2013
Revised EISPN	September 23, 2014
Public Meeting #2	October 13, 2014
Preparation of Draft EIS	2015/2016
Publication of Draft EIS	February 23, 2017
Public Meeting #3	March 1, 2017
Preparation of Final EIS	Summer 2017
Acceptance of Final EIS	Summer 2017

* Withdrawn

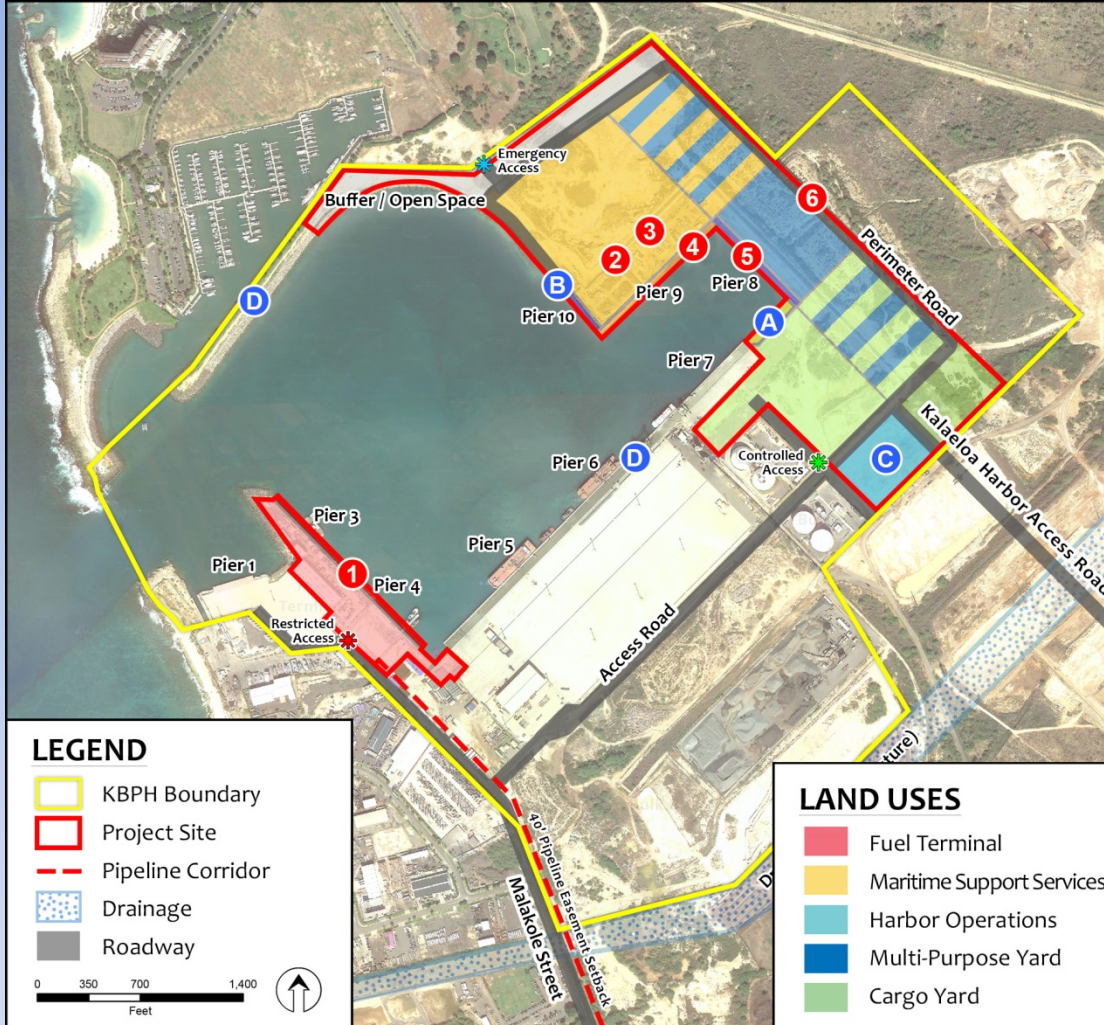


<http://KalaeloaHarbor2040.com>





Public & Agency Questions & Responses



Fuel Pier and Related Improvements

- ① Dedicated Fuel Pier & Fuel Terminal
- ② Tenant Relocation
- ③ Maritime Support Services
- ④ Haul-out Ramp
- ⑤ Small Vessel Layberth
- ⑥ Perimeter Road Realign

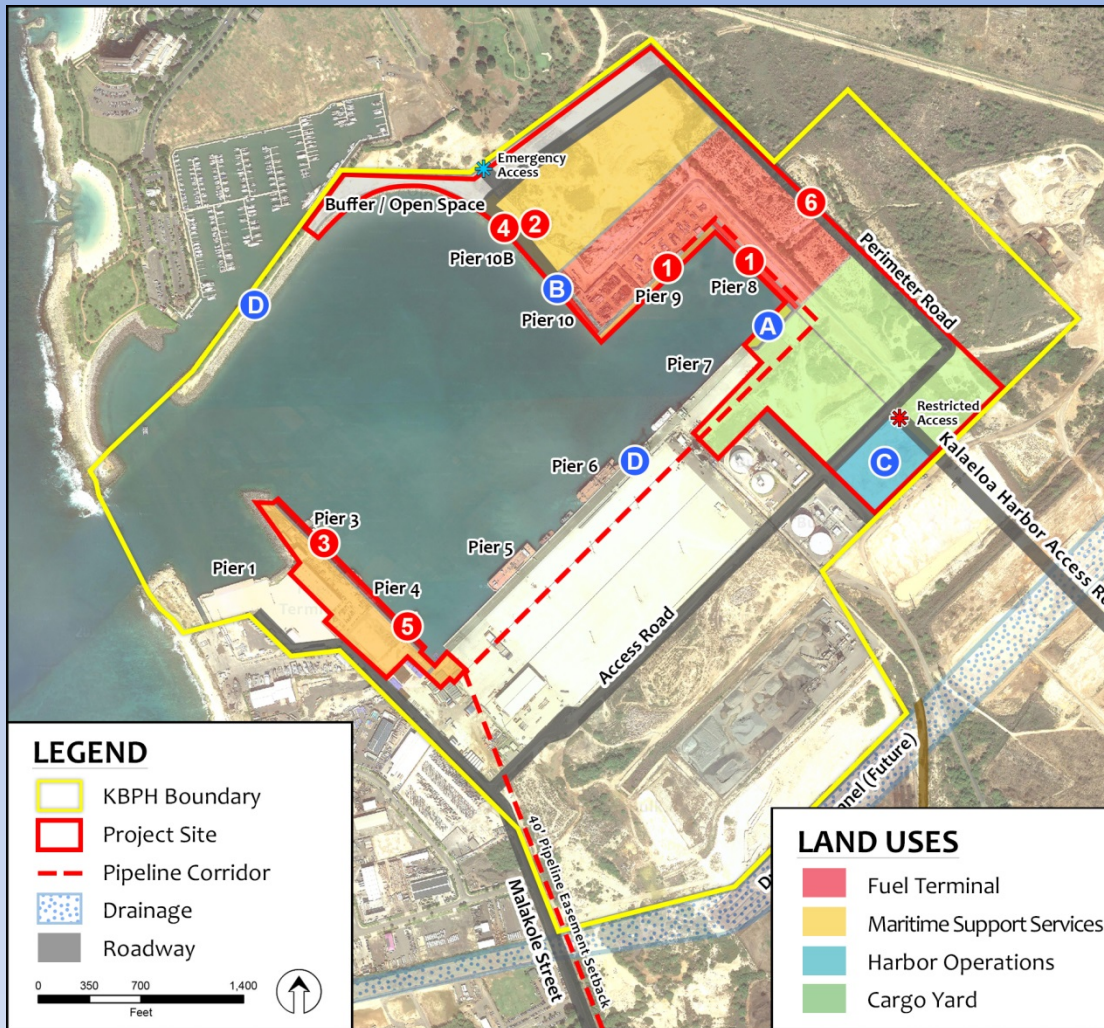
Actions with Independent Utility

- Ⓐ Dry-bulk Extension
- Ⓑ Large Vessel Layberth
- Ⓒ New Harbor Office
- Ⓓ Navigational & Berthing Aids

Various Improvement Locations

Personnel Shelters
Infrastructure Improvements

Harbor Configuration Alternative A (Proposed Action)



Harbor Configuration Alternative B

Fuel Pier and Related Improvements

- 1 Dedicated Fuel Pier & Fuel Terminal
- 2 Tenant Relocation
- 3 Maritime Support Services
- 4 Haul-out Ramp
- 5 Small Vessel Layberth
- 6 Perimeter Road Realign

Actions with Independent Utility

- A Dry-bulk Extension
- B Large Vessel Layberth
- C New Harbor Office
- D Navigational & Berthing Aids

Various Improvement Locations

Personnel Shelters
Infrastructure Improvements



Summary of Impacts

Resource	Proposed Action				Harbor Configuration Alternative B				No Action			
	Primary		Secondary	Cumulative	Primary		Secondary	Cumulative	Primary		Secondary	Cumulative
	CONS	OPS			CONS	OPS			CONS	OPS		
Land Use & Ownership									N/A			
Climate & Air Quality	T	LT		LT	T	LT		LT	N/A	LT		LT
Tides/Currents									N/A			
Harbor Oscillation					LT				N/A			
Bathymetry	LT								N/A			
Water Quality	T	LT			T	LT			N/A	LT		
Coral Colonies	ST, LT, U	LT	LT	LT	ST, LT, U	LT	LT	LT	N/A			
Macro-Invert. & Algae	ST, LT, U	LT	LT	LT	ST, LT, U	LT	LT	LT	N/A			
Endangered & Threatened	T	LT			T	LT			N/A			
Fish Communities	T, U		LT	LT	T, U		LT	LT	N/A			
Essential Fish Habitat	ST, U			LT	ST, U			LT	N/A			
Regulated Species	T, U			LT	T, U			LT	N/A			
Marine Invasive Species	T	LT		LT	T	LT		LT	N/A	LT		LT
Topo., Geology & Soils	T, LT, U				T, LT, U				N/A			
Surface & Ground Water									N/A			
Botanical & Faunal Res.	T	LT		LT		LT		LT	N/A	LT		LT
Natural Hazards									N/A	LT	LT	
Arch., Historic & Cultural									N/A			
Acoustical Environment	T, U	LT		LT	T, U	LT		LT	N/A	LT		LT
Roadways & Circulation	T	LT		LT	T	LT		LT	N/A	LT		LT
Infrastructure & Utilities	T	LT		LT	T	LT		LT	N/A	LT		
Public Services									N/A			
Demo. & Fiscal Conditions	T	LT	LT	LT	T	LT	LT	LT	N/A	LT	LT	
Navigable Airspace	T				T				N/A			
Hazardous Materials	T	LT		LT	T	LT		LT	N/A	LT		LT
Recreational Resources	T, U	LT, U			T, U	LT, U			N/A			
Visual & Aesthetic	T	LT, U		LT	T	LT, U		LT	N/A			

Legend: CONS = Construction

OPS = Operations

N/A = Not Applicable

T = Temporary Impacts

ST = Short-term Impacts

LT = Long-term Impacts

U = Unavoidable Impacts

 Potentially Significant Adverse Effect

 Potentially Significant Adverse Effect Mitigable to Less Than Significant

 Less Than Significant Adverse Effect

 No Effect

 Beneficial Effect