

# Honoapiilani Highway Emergency Shoreline Repairs Milepost 13 to 15

Lahaina, Island of Maui, Hawaii

May 20, 2015

# Introduction and Meeting Purpose

State of Hawaii, Department of Transportation (HDOT)

Highways Division

Deputy Director: Ed Sniffen

Administrator: Raymond J. McCormick

- Provide information regarding the project
- Gather input from the community
- Establish working relationships with the community



# Project Location



# Project Purpose

To protect this portion of Honoapiilani Highway from further shoreline erosion.

# Background: Project Area

- Honoapiilani Highway faces shoreline erosion issues in various locations in Launiupoko, Olowalu, and Ukumehame
- Highway repairs and rock revetments have been required at other locations due to damage from past storms and/or gradual shoreline erosion



# Existing Conditions



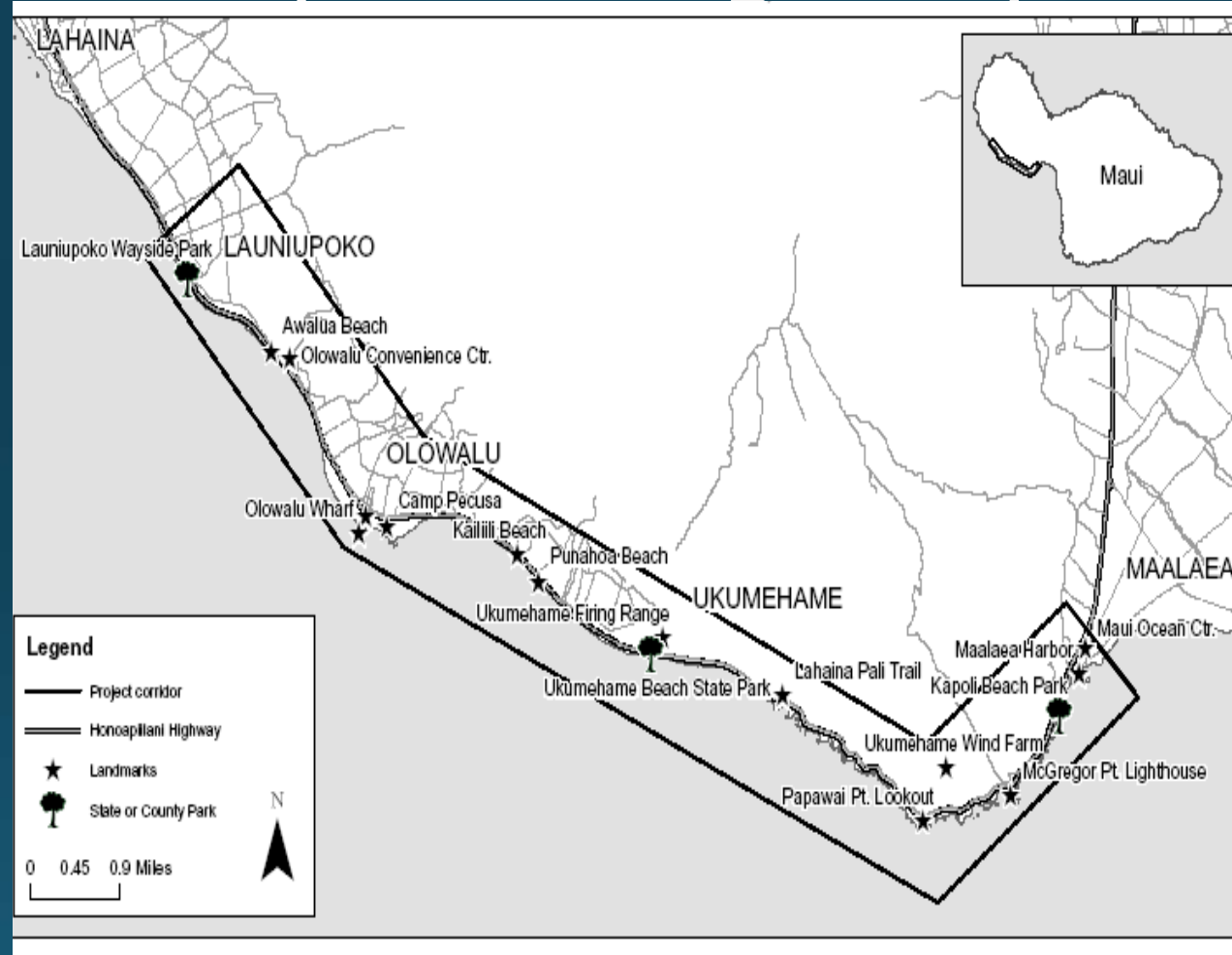
Wednesday, May 20, 2015



# Future: Honoapiilani Highway Realignment

- HDOT has been considering the realignment and widening of Honoapiilani Highway from Maalaea to Lahaina Bypass
  - Alternatives have been identified
  - Estimated cost is in excess of \$800 million
  - Planning and environmental is underway and continuing
- The existing highway needs to be maintained until realignment

# Future: Honoapiilani Highway Realignment





# Background: Emergency Shoreline Repairs

- Governor Neil Abercrombie's disaster proclamation included storm surge damage on Maui
- Emergency repairs were made quickly and included:
  - Placing new or shifting existing "K-rail" barriers (aka "Jersey barriers") to inhibit vehicles from straying into the eroded area
  - Placing roughly 115 "Bulka" bags filled with sand and gravel between the remaining highway embankment and the shoreline to slow natural coastal erosion

# Emergency Shoreline Repairs

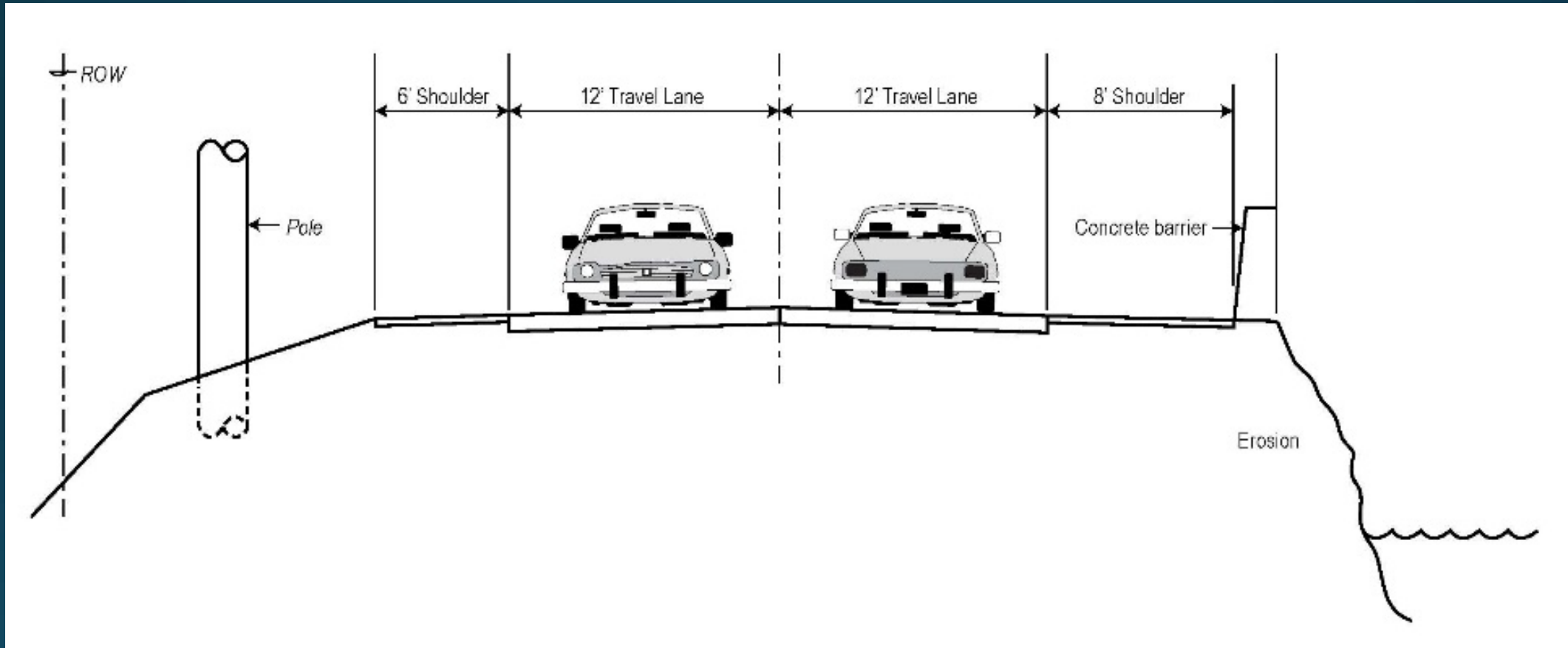


# Permanent Emergency Repair Work: Details

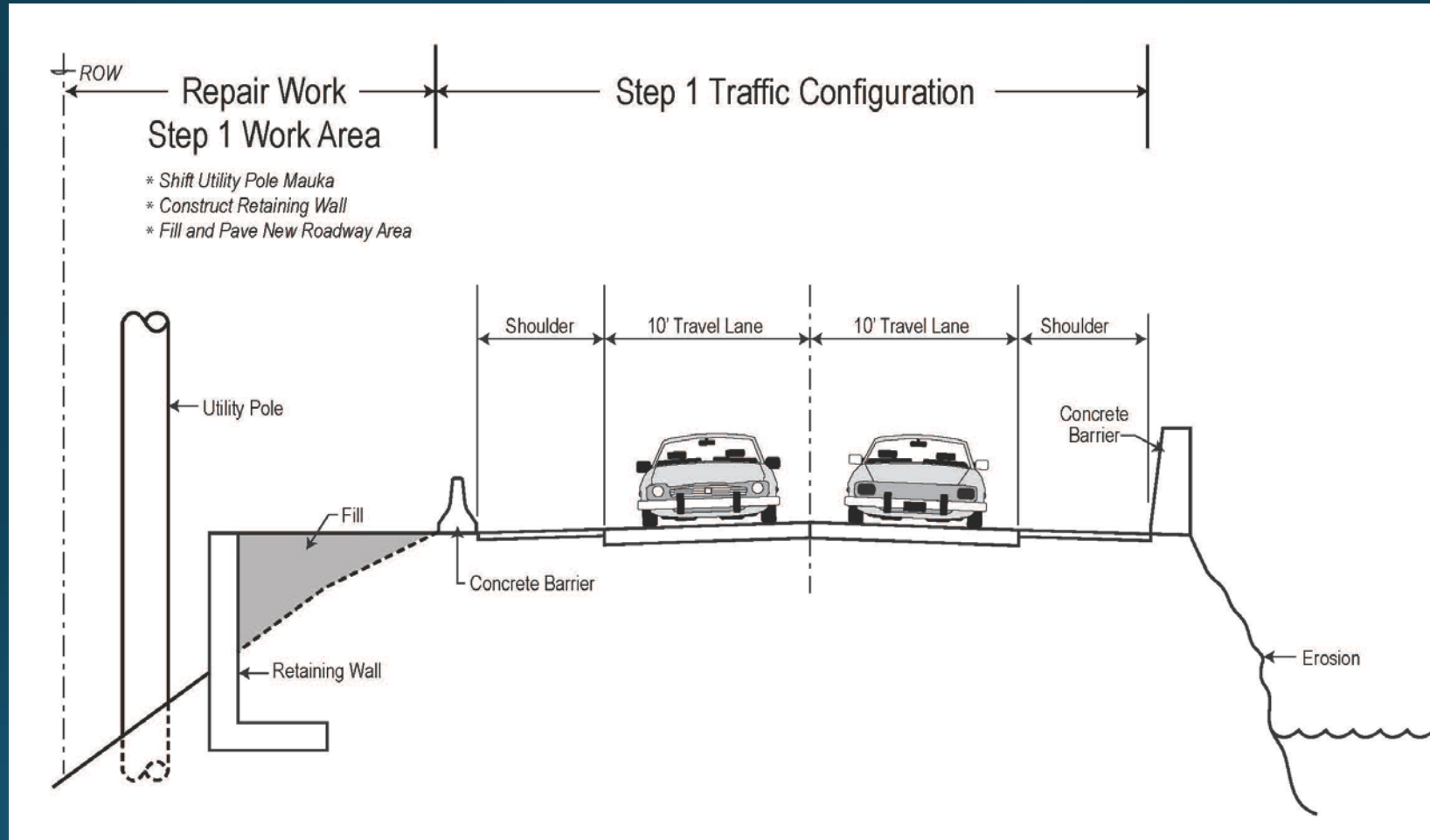
- Work will occur during daylight hours (approximately 7a.m. to 6p.m.), 7 days/week
- Roadway configuration will remain two lanes, one in each direction
- Limitations on work hours and days will increase the duration and cost of construction
- Existing highway paved section limited to:
  - Two 12-foot wide lanes
  - A 6-foot wide shoulder lane on the mauka side
  - An 8-foot wide should lane on the makai side, partially damaged



# Existing Typical Section

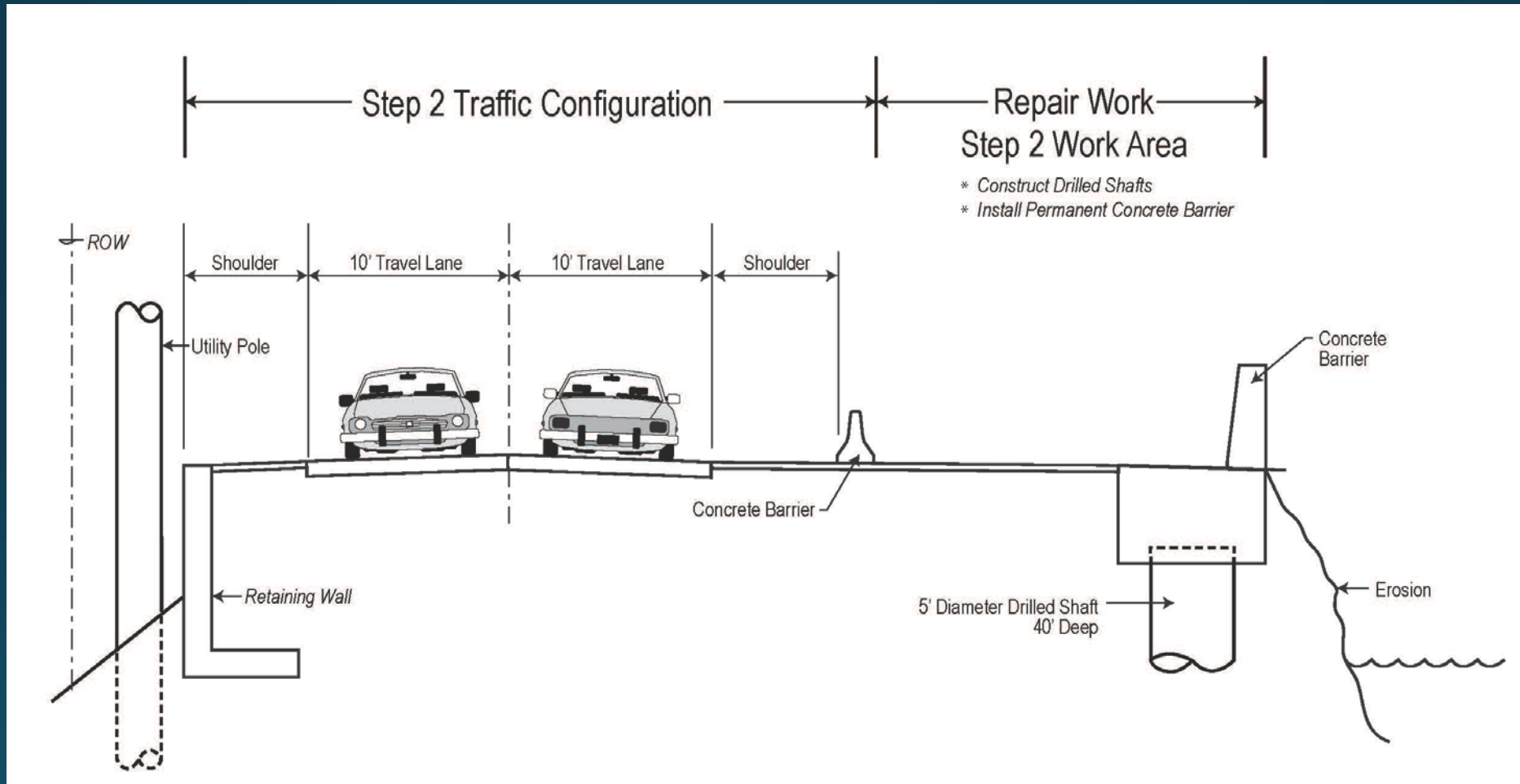


# Step 1 Typical Section

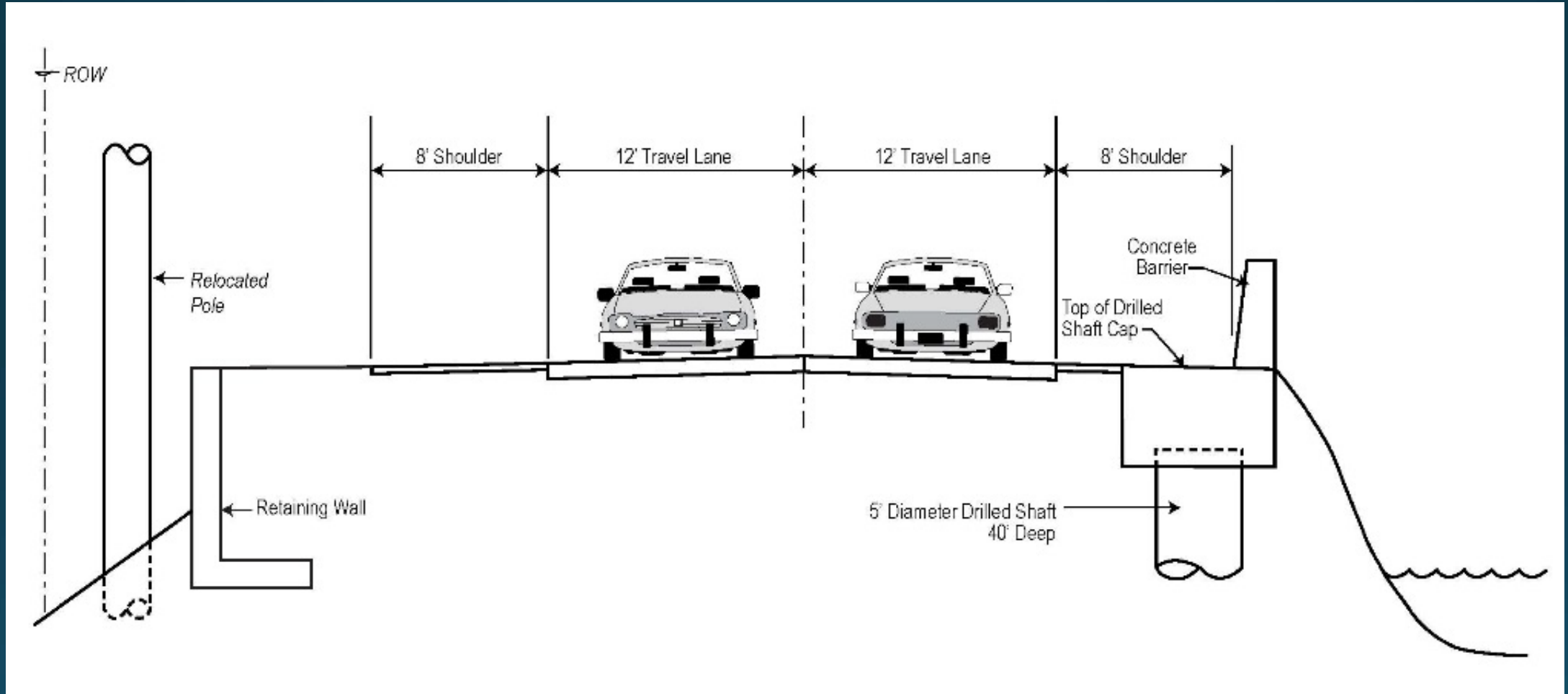




# Step 2 Typical Section



# Future Typical Section



# Permanent Emergency Repair Work: Permits

- All County and State level permits are suspended
- Federal disclosures/reviews/permits/approvals still in force:
  - National Environmental Policy Act (NEPA) disclosure
  - National Historic Preservation Act (NHPA) Section 106 review
    - Section 106 meetings will be held, as appropriate, and those meetings will be advertised
  - Section 4(f) of the US Department of Transportation Act review
  - Endangered Species Act (ESA) Section 7 review
- Others may be required



# Permanent Emergency Repair Work: Potential Impacts

- Beneficial:
  - Prevent further erosion damage to the highway
  - Reliable access through the project area, a link in the Lahaina access corridor
  - Improved safety for motorists
  - Improved bicycle and pedestrian facilities
  - Prevent deposition of asphaltic materials and underlying soils onto the nearshore reef, thereby mitigating the existing degradation of the coral reef
- Adverse:
  - Construction-phase impacts, (noise, staging areas, etc.)
  - Loss of accessible natural shoreline



# Questions?





# Project Contact Information

Jamie Ho

HDOT, Highways Division

AliiAIMoku Building

869 Punchbowl Street, Room 404

Honolulu, HI 96813

(808) 587-2185

[jamie.ho@hawaii.gov](mailto:jamie.ho@hawaii.gov)

