

Queen Ka'ahumanu Highway Widening, Phase 2

Kealakehe Parkway to Keahole Airport Road

August 25, 2015



STATE OF HAWAII
Department of Transportation



U.S. Department of Transportation
Federal Highway
Administration



GOODFELLOW BROS., INC.
GENERAL CONTRACTOR
ESTABLISHED 1921

Meeting Objectives

- Project Status
- Project Design Overview
- What to Expect During Construction
- Public Information Program
- Questions and Answers



STATE OF HAWAII
Department of
Transportation



U.S. Department of Transportation
Federal Highway
Administration



GOODFELLOW BROS., INC.
GENERAL CONTRACTOR
ESTABLISHED 1921

Project Status

- Section 106 Consultations Completed
- Section 106 MOA Signed and Accepted
- Section 4f Evaluation Accepted
- SHPD Review Letter Issued
- All Required Project Permits Issued
- 100% Design Plans Finalized
- NTP for 9/1/15 Start of Construction Issued
- South Segment Redesign to Avoid Historic Sites 80% Complete



STATE OF HAWAII
Department of
Transportation



U.S. Department of Transportation
Federal Highway
Administration



GOODFELLOW BROS., INC.
GENERAL CONTRACTOR
ESTABLISHED 1921

Project location



STATE OF HAWAII
Department of
Transportation



U.S. Department of Transportation
Federal Highway
Administration



GOODFELLOW BROS., INC.
GENERAL CONTRACTOR
ESTABLISHED 1921

Overview

- **Project Highlights**
 - **Six Signalized Intersections**
 - **Highway Lighting at Intersections**
 - **Culvert Extensions**
 - **Landscaping**
 - **Utility Relocations**



STATE OF HAWAII
Department of
Transportation



U.S. Department of Transportation
Federal Highway
Administration



GOODFELLOW BROS., INC.
GENERAL CONTRACTOR
ESTABLISHED 1921

Overview Continued

- **Private Developer and County Participation**
 - **Hulikoa Intersection**
 - **Improved Water System**
 - **Improved Sewer Utilities**



STATE OF HAWAII
Department of
Transportation

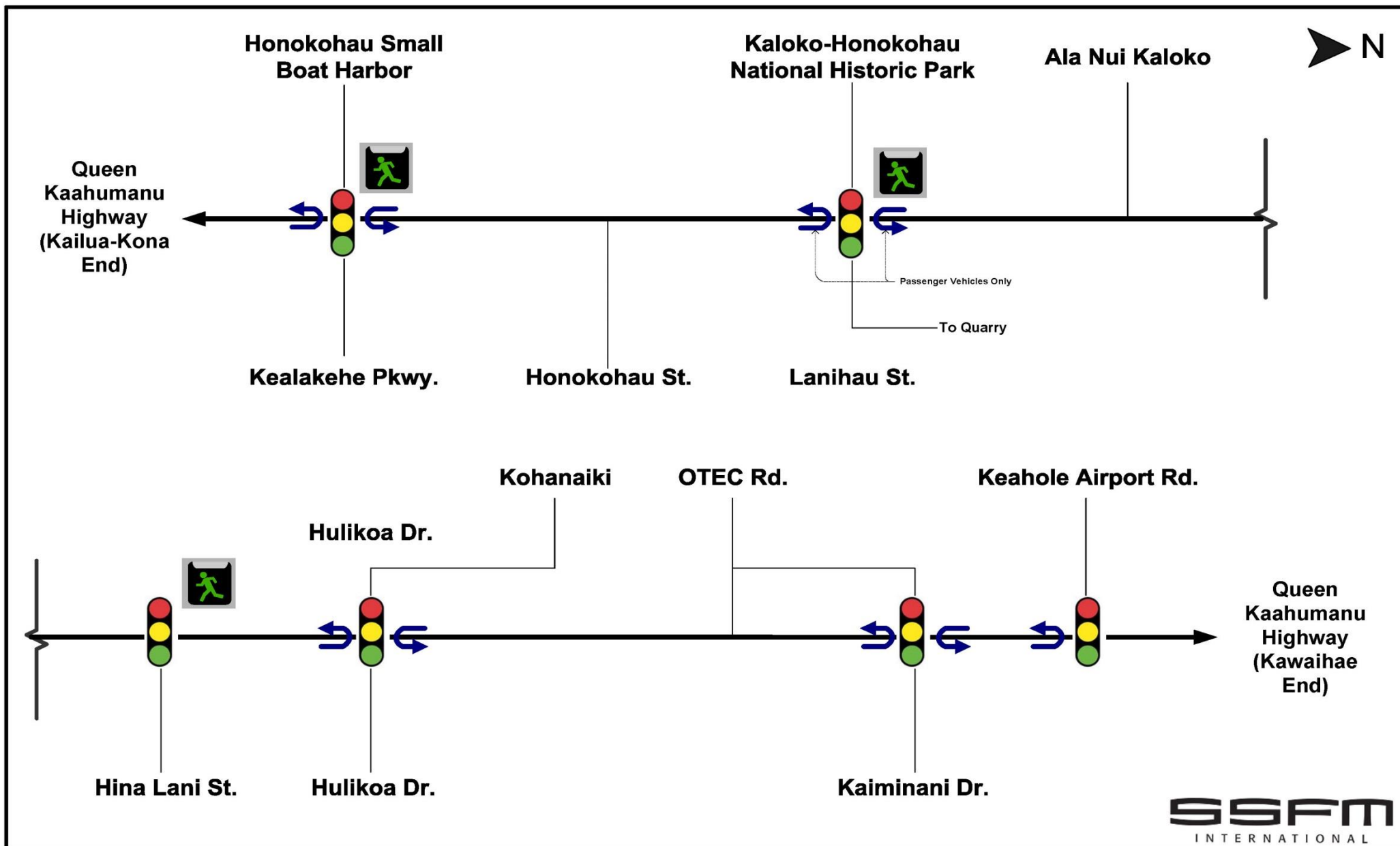


U.S. Department of Transportation
Federal Highway
Administration



GOODFELLOW BROS., INC.
GENERAL CONTRACTOR
ESTABLISHED 1921

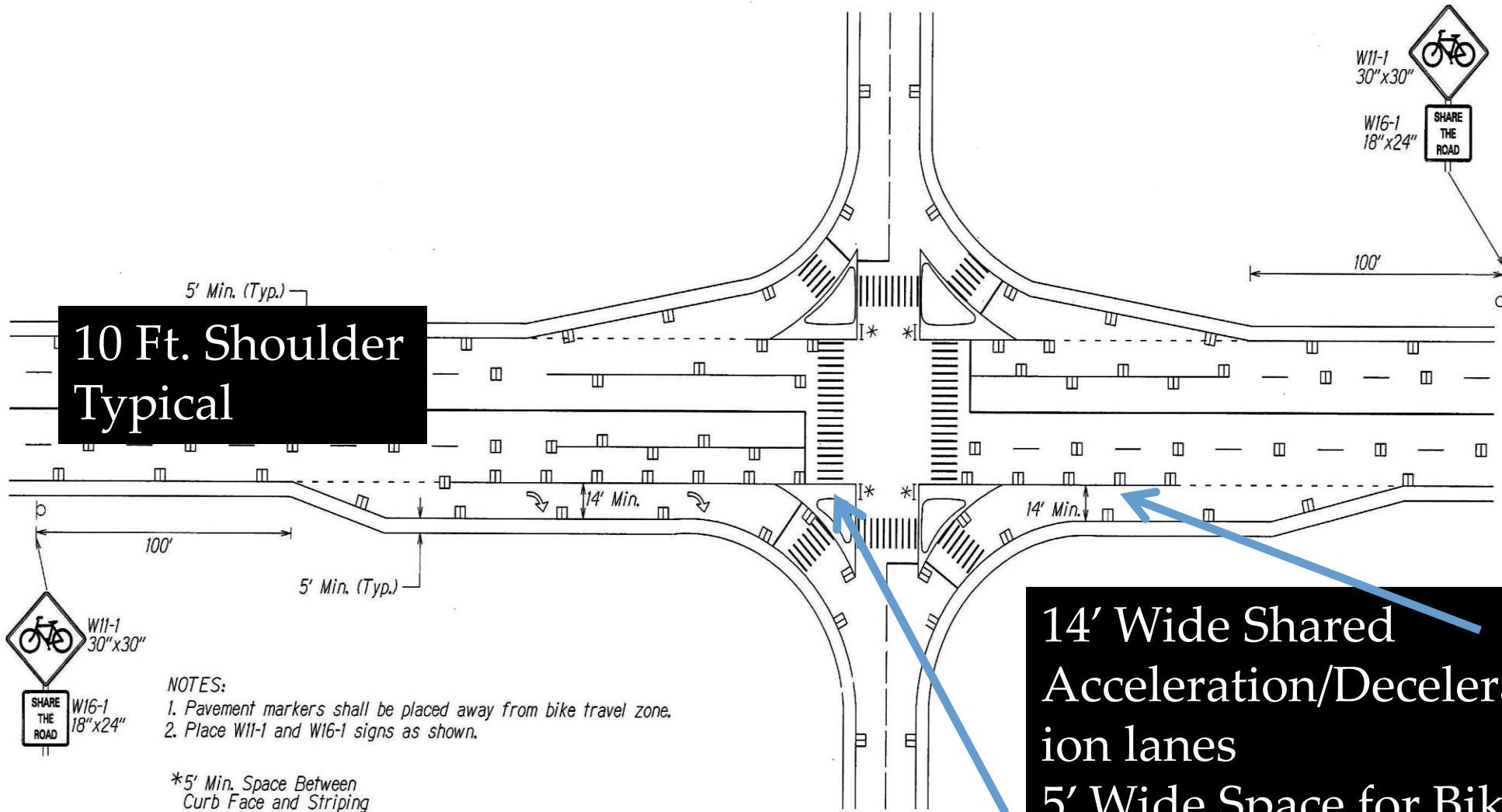
Improved Traffic Flow



Design Highlights

- All pavement will be asphalt
- Traffic signals will be equipped with video cam capabilities
- Traffic signals will be interconnected and coordinated for maximum traffic flow
- Street lights spacing will be increased from 90 to 120 ft
- All street light will be LED technology providing a 50% savings in energy cost
- 8 -10 feet wide shoulders for bicycles
- Pedestrians crossing provided at three intersections





10 Ft. Shoulder
Typical

14' Wide Shared
Acceleration/Decelerat
ion lanes
5' Wide Space for Bikes
at Stop Bar

8 Ft. Shoulder
At Intersections

BIKE ROUTE THRU INTERSECTION
ON A SHARED ROADWAY
WITH POSTED SPEED LIMIT > 35 MPH

NOTES:

1. Pavement markers shall be placed away from bike travel zone.
2. Place W11-1 and W16-1 signs as shown.

*5' Min. Space Between
Curb Face and Striping



STATE OF HAWAII
Department of
Transportation



U.S. Department of Transportation
Federal Highway
Administration



GOODFELLOW BROS., INC.
GENERAL CONTRACTOR
ESTABLISHED 1921

What to Expect During Construction

- **15 – 20 Trucks Hauling Materials During Day Time Only**
 - **Up to 6 Days a Week for First Year**
 - **When Paving After That**
- **Limited Night Work on Intersections and Water Line Connections**
- **Lower Speed Limit (35 MPH)**
- **Always at Least One Lane in Each Direction**



STATE OF HAWAII
Department of
Transportation



U.S. Department of Transportation
Federal Highway
Administration



GOODFELLOW BROS., INC.
GENERAL CONTRACTOR
ESTABLISHED 1921

Truck Crossings



- **Most Significant Traffic Impact During Construction**
- **Slow Trucks Entering or Exiting Highway Ahead**
- **See Website Traffic Control Page for Traffic Control Updates**



STATE OF HAWAII
Department of
Transportation



U.S. Department of Transportation
Federal Highway
Administration



GOODFELLOW BROS., INC.
GENERAL CONTRACTOR
ESTABLISHED 1921

Minimize Impact on Traffic

- **Work Zones Kept Separate from Traffic Lanes**
- **Temporary Lane Shifts at Side Streets to Maintain Two-Way Traffic**
- **Maintain Existing Access and Turning Movements until Completion – NELHA**
- **Maintain Paved Shoulders for Bicycles During Construction**
- **Maintain Existing Pedestrian Crossings**
- **Flaggers and Police Officers to Direct Traffic When Necessary**



Minimizing Other Impacts

- **Minimal Night Work at Intersections and Utility Connections**
- **No Adverse Impacts to Ironman Triathlon**
- **Pro-Active Communication with Community**
- **Project Will be Built in Five Stages**



STATE OF HAWAII
Department of
Transportation

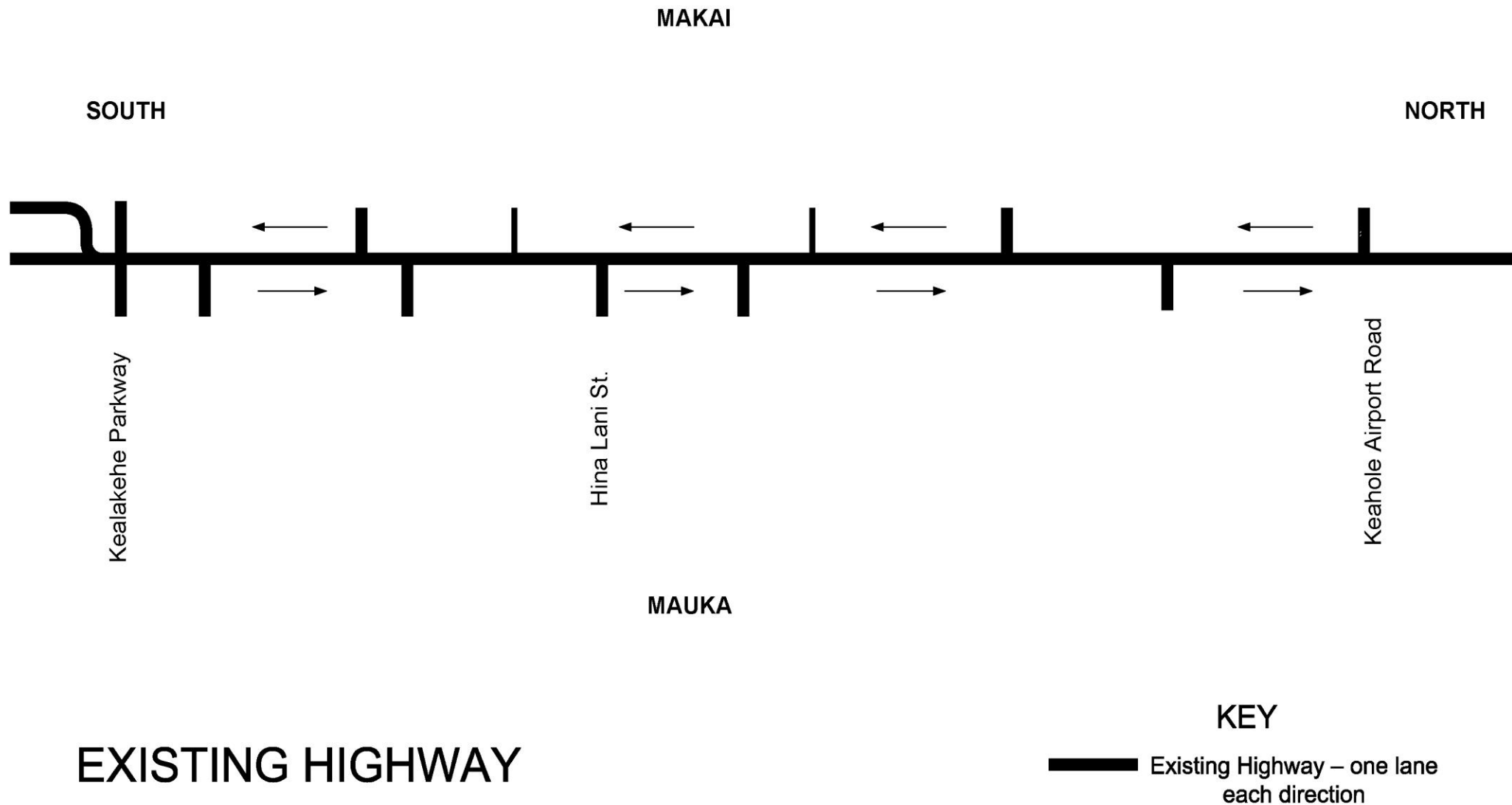


U.S. Department of Transportation
Federal Highway
Administration

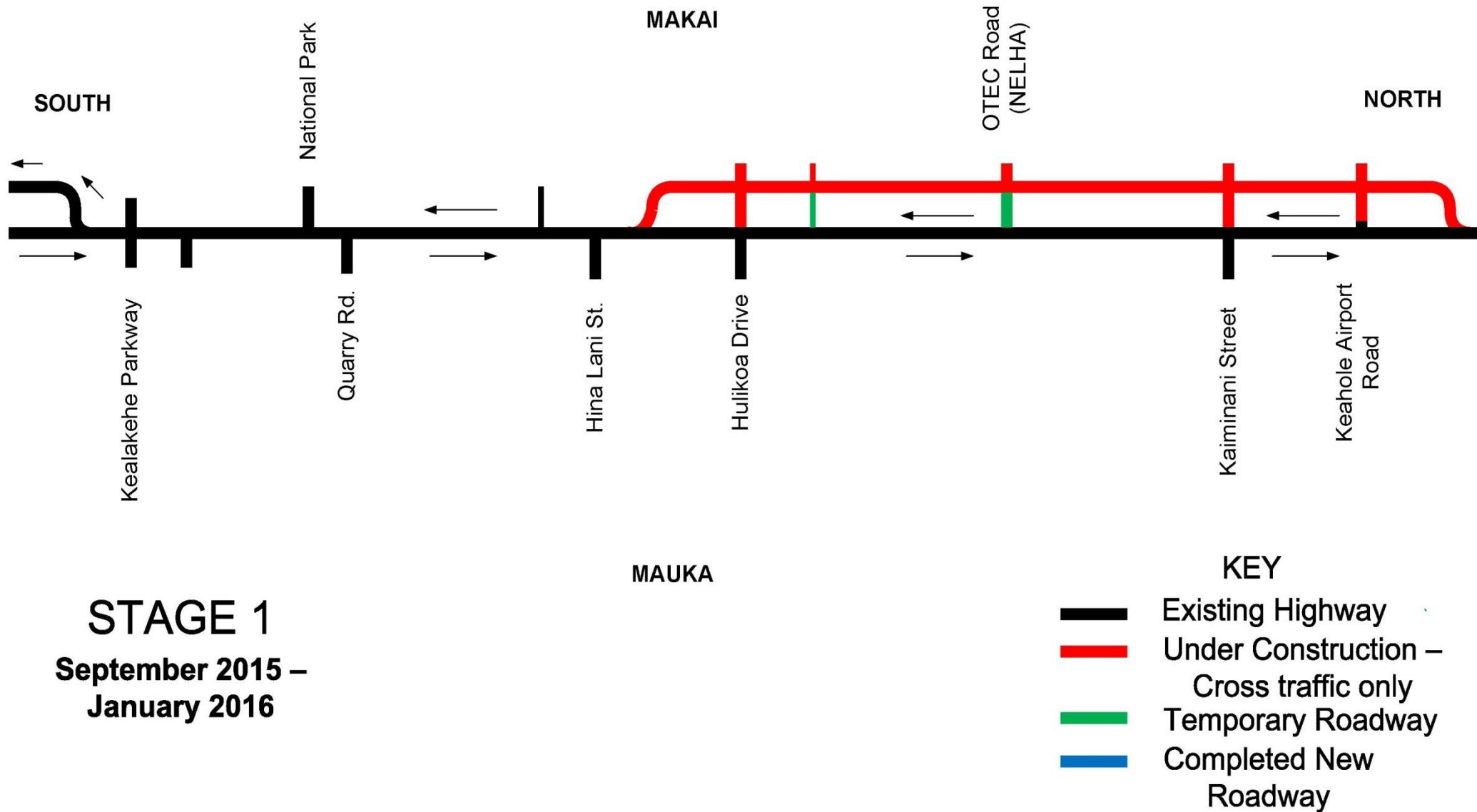


GOODFELLOW BROS., INC.
GENERAL CONTRACTOR
ESTABLISHED 1921

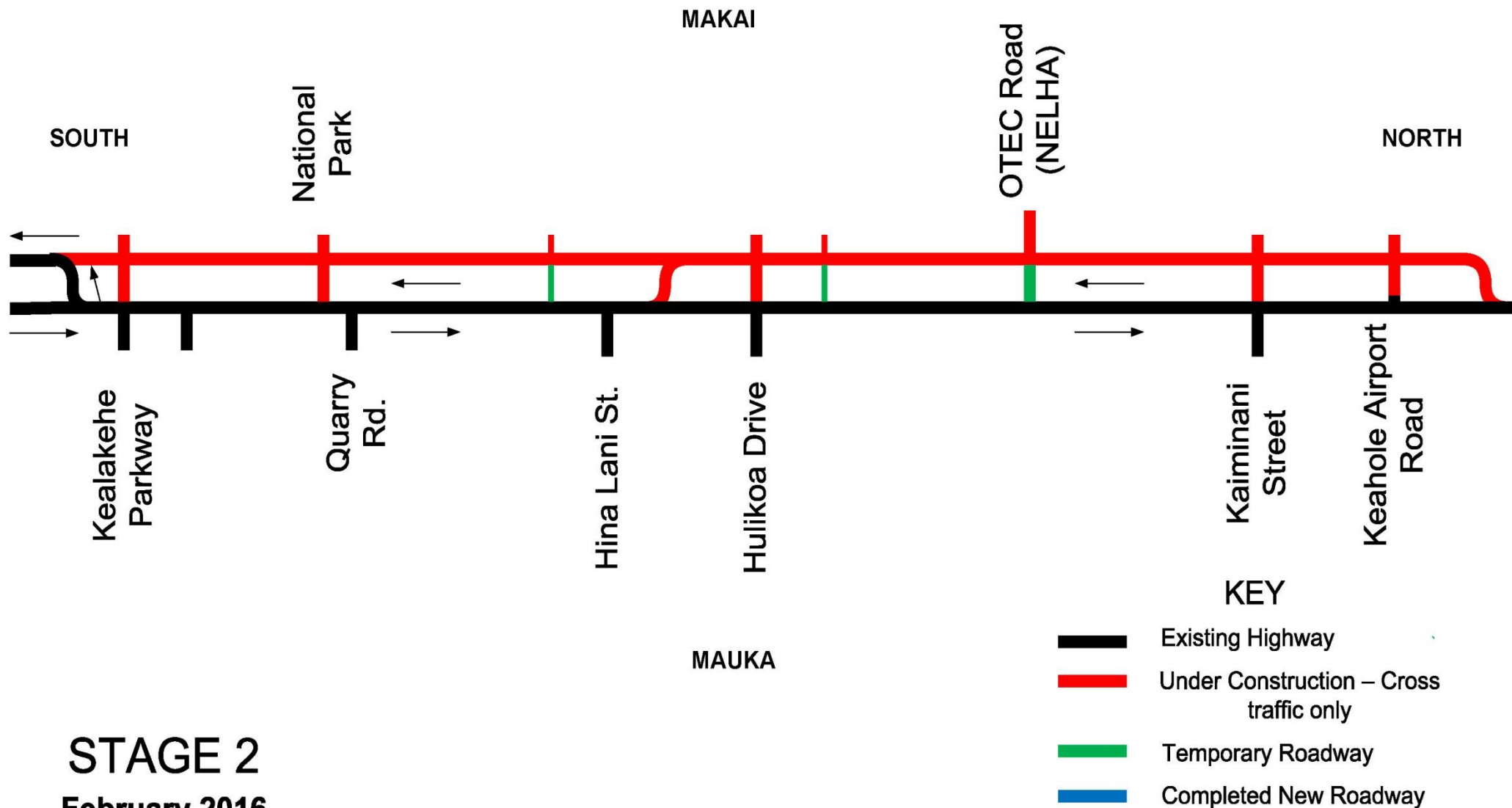
CONSTRUCTION AND TRAFFIC CONTROL STAGES



CONSTRUCTION AND TRAFFIC CONTROL STAGES



CONSTRUCTION AND TRAFFIC CONTROL STAGES



STAGE 2

February 2016
– July 2016



STATE OF HAWAII
Department of
Transportation

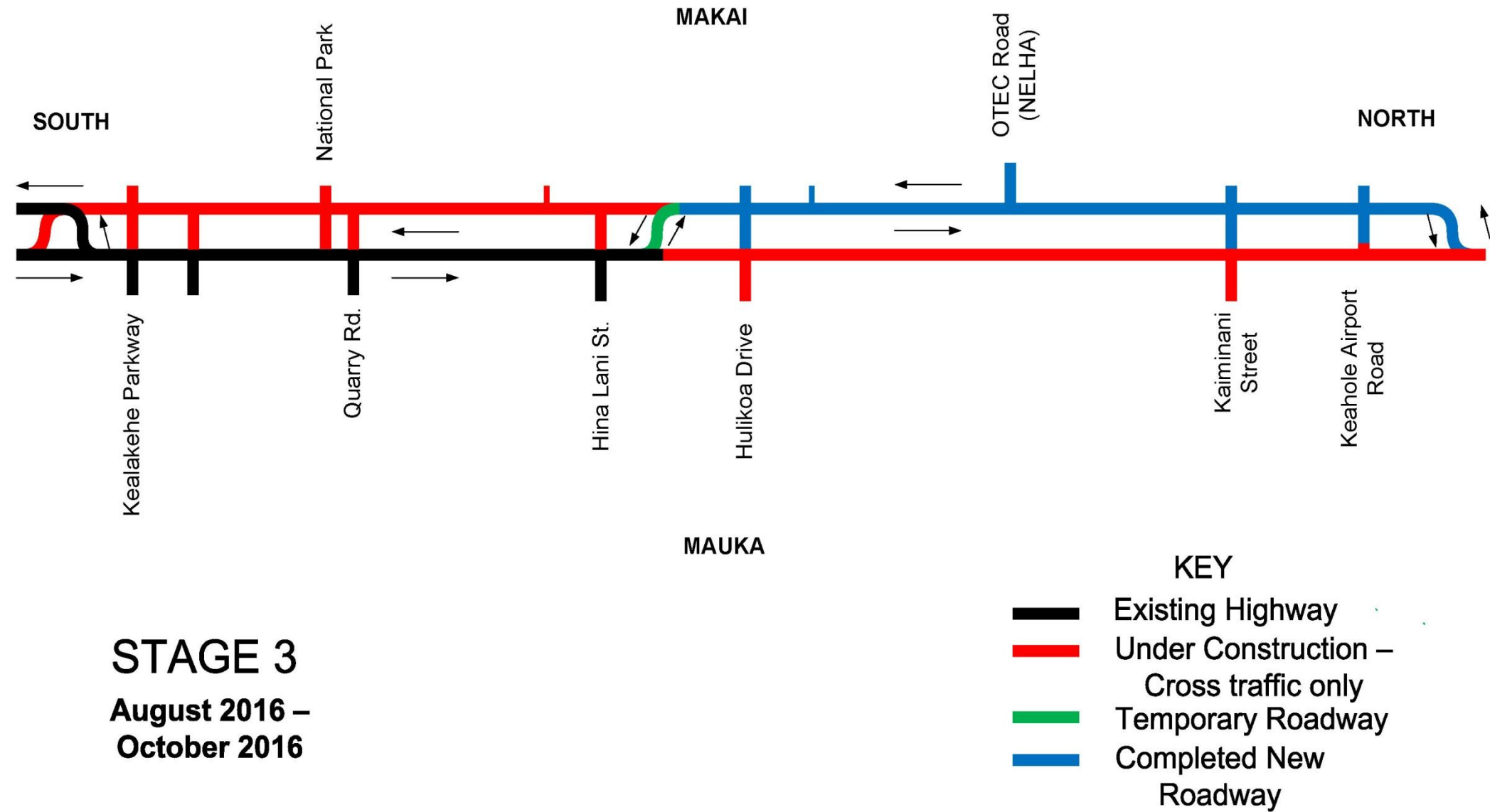


U.S. Department of Transportation
Federal Highway
Administration



GOODFELLOW BROS., INC.
GENERAL CONTRACTOR
ESTABLISHED 1921

CONSTRUCTION AND TRAFFIC CONTROL STAGES



STATE OF HAWAII
Department of
Transportation

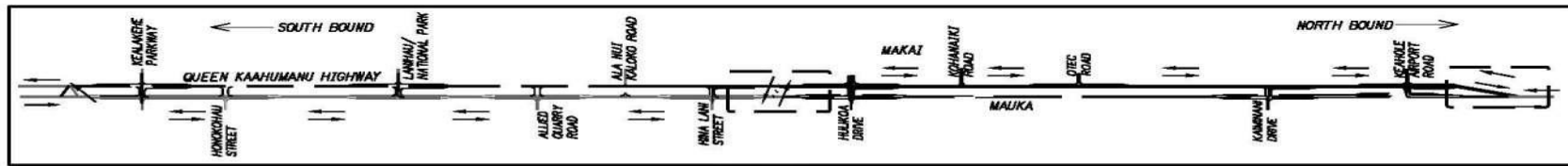


U.S. Department of Transportation
Federal Highway
Administration



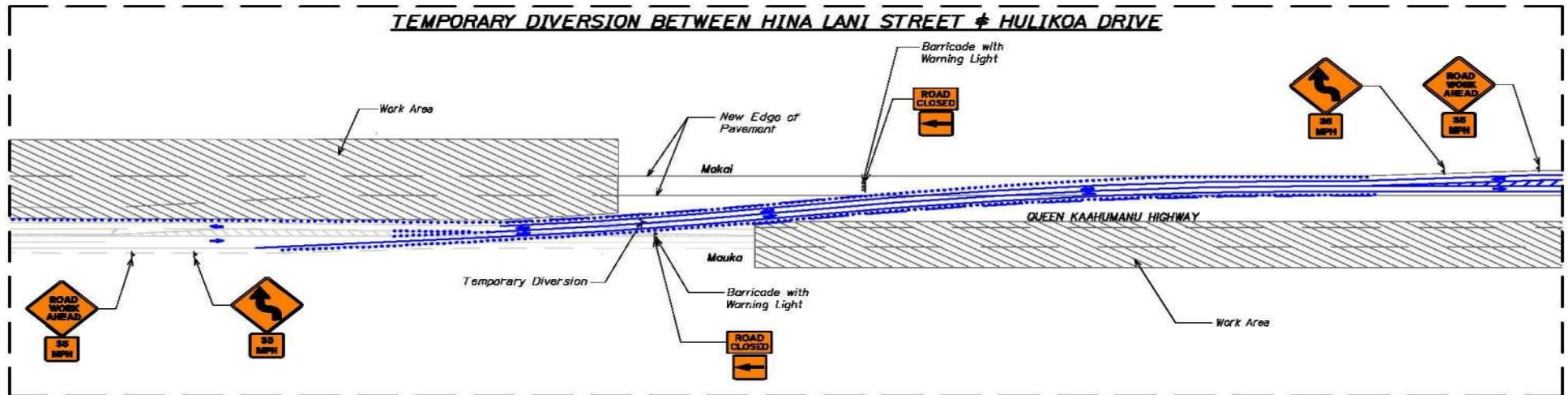
GOODFELLOW BROS., INC.
GENERAL CONTRACTOR
ESTABLISHED 1921

Stage 3 Diversions

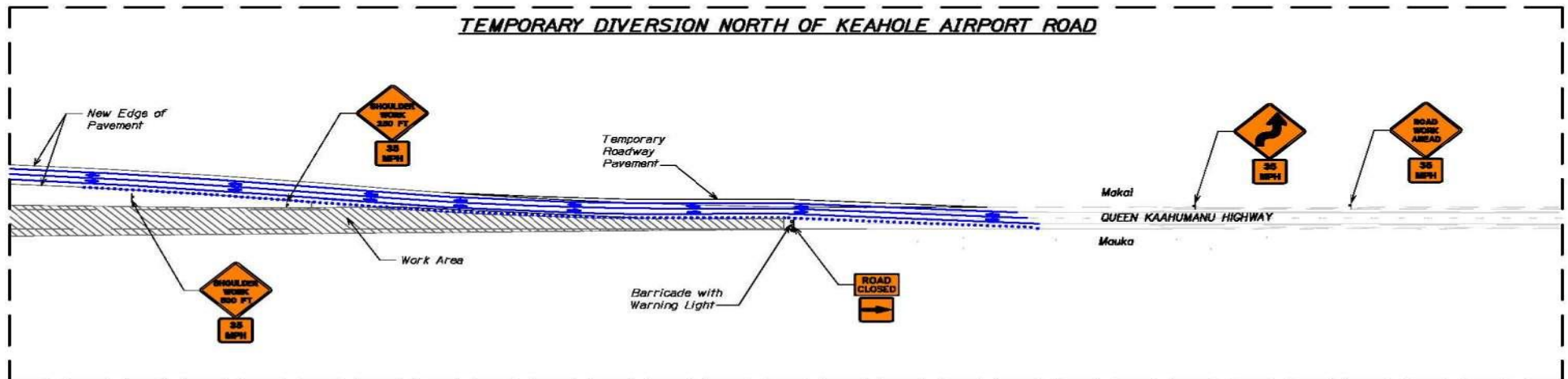


KEYMAP
NOT TO SCALE

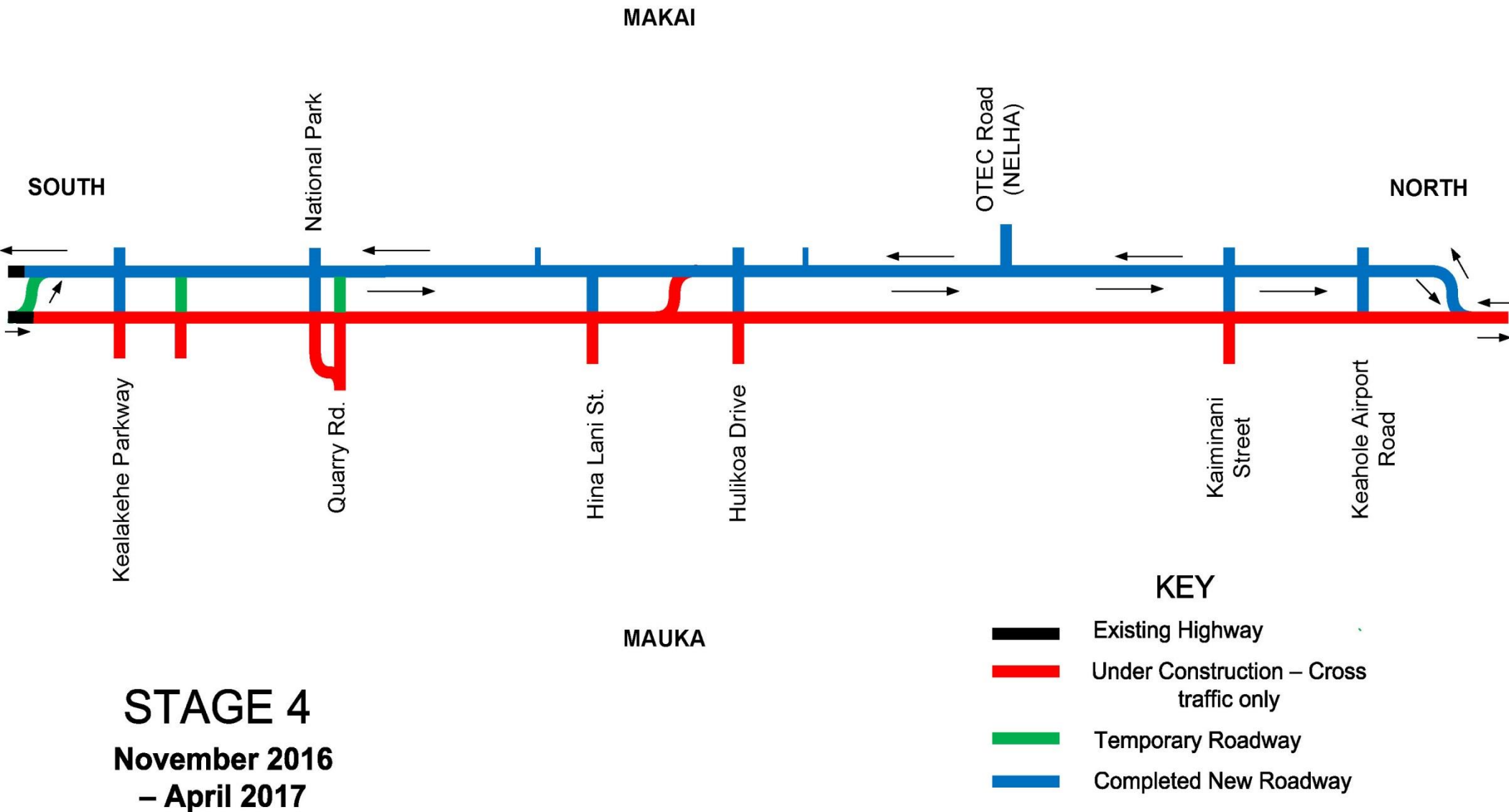
TEMPORARY DIVERSION BETWEEN HINA LANI STREET & HULIOKA DRIVE



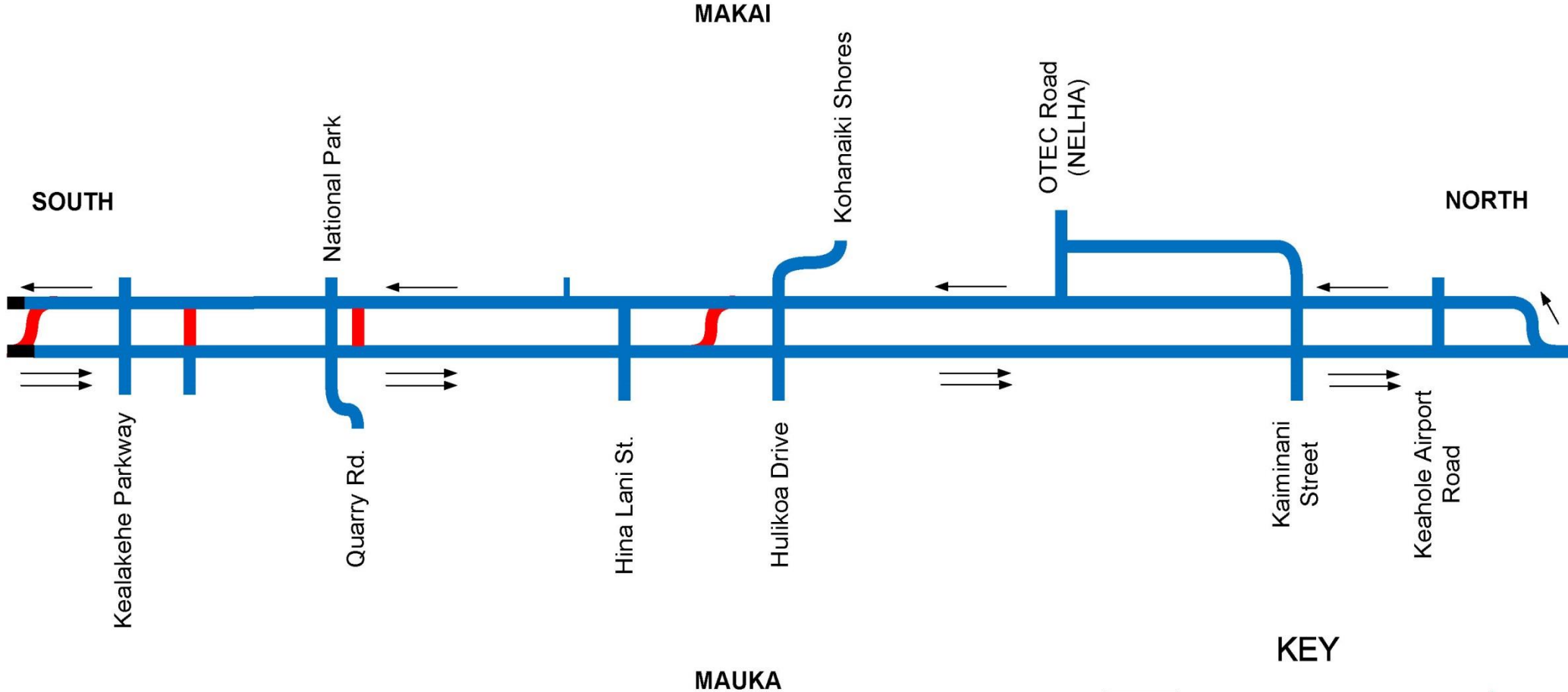
TEMPORARY DIVERSION NORTH OF KEAHOE AIRPORT ROAD



CONSTRUCTION AND TRAFFIC CONTROL STAGES



CONSTRUCTION AND TRAFFIC CONTROL STAGES



STAGE 5

May 2017 –
August 2017

KEY

- Existing Highway
- Under Construction – Cross traffic only)
- Temporary Roadway
- Completed New Roadway



STATE OF HAWAII
Department of
Transportation

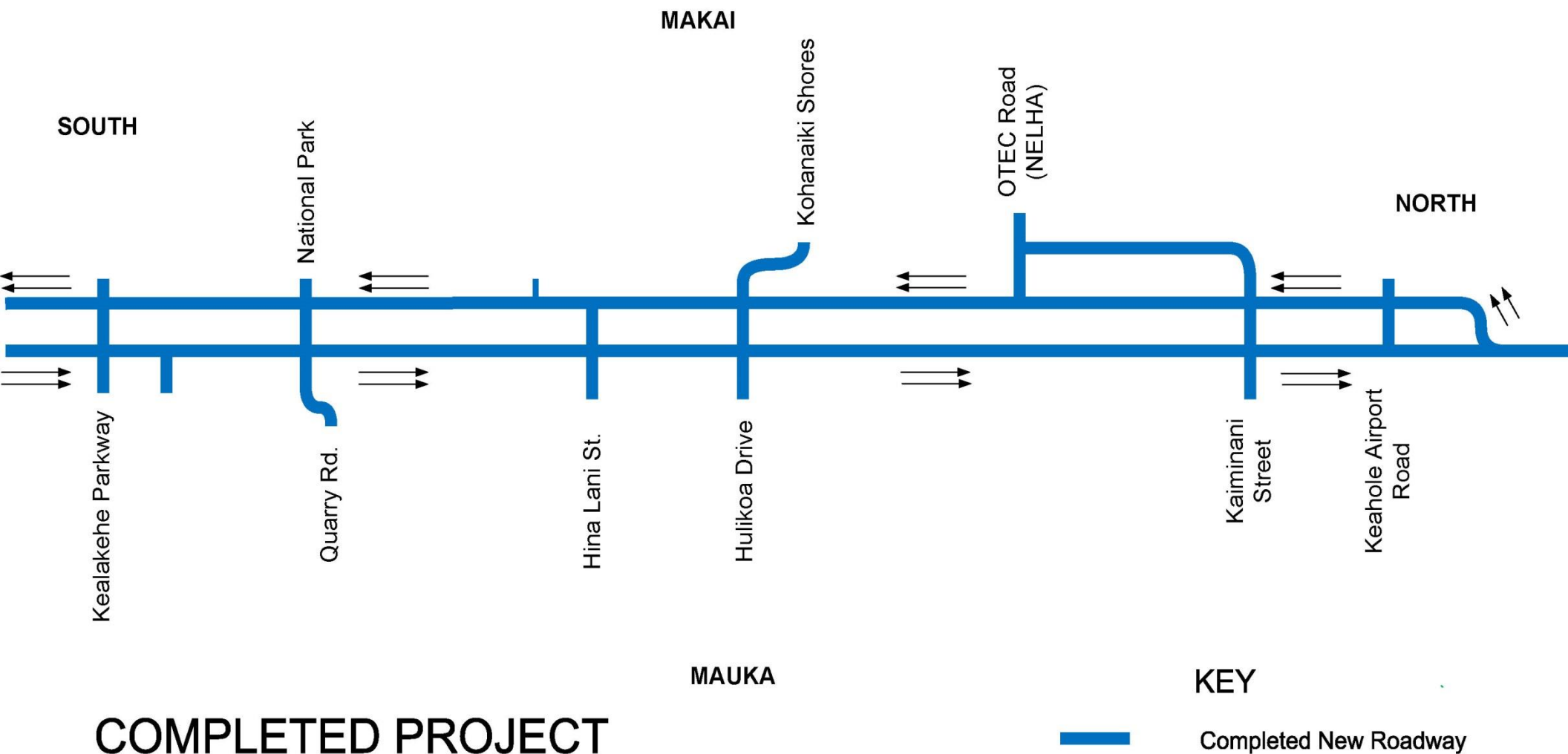


U.S. Department of Transportation
Federal Highway
Administration



GOODFELLOW BROS., INC.
GENERAL CONTRACTOR
ESTABLISHED 1921

CONSTRUCTION AND TRAFFIC CONTROL STAGES



COMPLETED PROJECT

September 2017



STATE OF HAWAII
Department of
Transportation



U.S. Department of Transportation
Federal Highway
Administration



GOODFELLOW BROS., INC.
GENERAL CONTRACTOR
ESTABLISHED 1921

Roadside Memorials

- **HDOT and the project team are attempting to identify the families associated with memorials in the project right of way.**
- **Please assist us in identifying contact information for the families.**
- **Memorials will be removed and stored by HDOT staff on Friday, September 18th**



Roadside Memorials

Milepost 94.8



Milepost 95.9



Milepost 93.4



Milepost 97.5



STATE OF HAWAII
Department of
Transportation



U.S. Department of Transportation
Federal Highway
Administration



August 25, 2015
GOODFELLOW BROS., INC.
GENERAL CONTRACTOR
ESTABLISHED 1921

Ongoing Public Information Program

- Queen Ka'ahumanu Website
- 24 Hour Hotline
- Changeable Message Signs
- Community Meetings as Needed



STATE OF HAWAII
Department of
Transportation



U.S. Department of Transportation
Federal Highway
Administration



GOODFELLOW BROS., INC.
GENERAL CONTRACTOR
ESTABLISHED 1921

Queen Ka'ahumanu Highway Widening - Phase 2

24 Hour Hotline (888) 440-7988

Home

Highway Widening Phase 2

Kealahou Parkway to Keahole Airport Road
Project No. NH-019-1(38)R

The goal of this design-build project is to improve traffic flow from Keahole Airport Road to Kealahou Parkway. This 5.2 mile section of the Queen Ka'ahumanu Highway will be widened from the existing two lanes to four lanes. New coordinated traffic signals will be installed at all intersections with left-turn access to or from the highway.



Project Updates



HDOT BEGIN ARCHAEOLOGICAL DATA RECOVERY PHASE

May 23, 2015

PUBLIC INFORMATION MEETING NO. 3

Nov 10, 2011

ROADSIDE MEMORIALS

Nov 10, 2011

Traffic Control



Select the following link for information on the currently planned traffic control and construction stages.

[CLICK HERE](#) to view Construction and Traffic Control Stages.

Project Schedule



The State Department of Transportation currently expects to be able to issue construction Notice to Proceed by August or September of 2015. Construction is expected to be completed within twenty-four months.

A more detailed progress schedule will be posted to this web page following issuance of Notice to Proceed for construction.



Project hotline (888) 440-7988

- Hot Line Answered 24/7
- General Inquiries and Concerns
- Goodfellow Bros. is committed to one working day response to concerns expressed on the website or hotline.
- In Emergencies – CALL 911 not the Hot Line!



STATE OF HAWAII
Department of
Transportation



U.S. Department of Transportation
Federal Highway
Administration



GOODFELLOW BROS., INC.
GENERAL CONTRACTOR
ESTABLISHED 1921

Questions

CONTACT US AT

www.buildqueenk.com

OR Call the Hotline at: 1-888-440-7988

MAHALO!



STATE OF HAWAII
Department of
Transportation



U.S. Department of Transportation
Federal Highway
Administration



GOODFELLOW BROS., INC.
GENERAL CONTRACTOR
ESTABLISHED 1921